

## Appendix 1

Site	Site 1
GPS	1635584 5397071
Land cover	Pines < 10 years
Type of erosion	2Da 3Df
LUC Class	7e12
Infrastructure damage	Public road closure



Figure A1 Site 1 erosion in pines <10 years

Some Observations of Erosion as a Result of the 28 December 2010 Storm Event

Site	Site 2
GPS	1636418 5399309
Land cover	Pines < 10 years
Type of erosion	2Da 3Df
LUC Class	7e9
Infrastructure damage	None noted

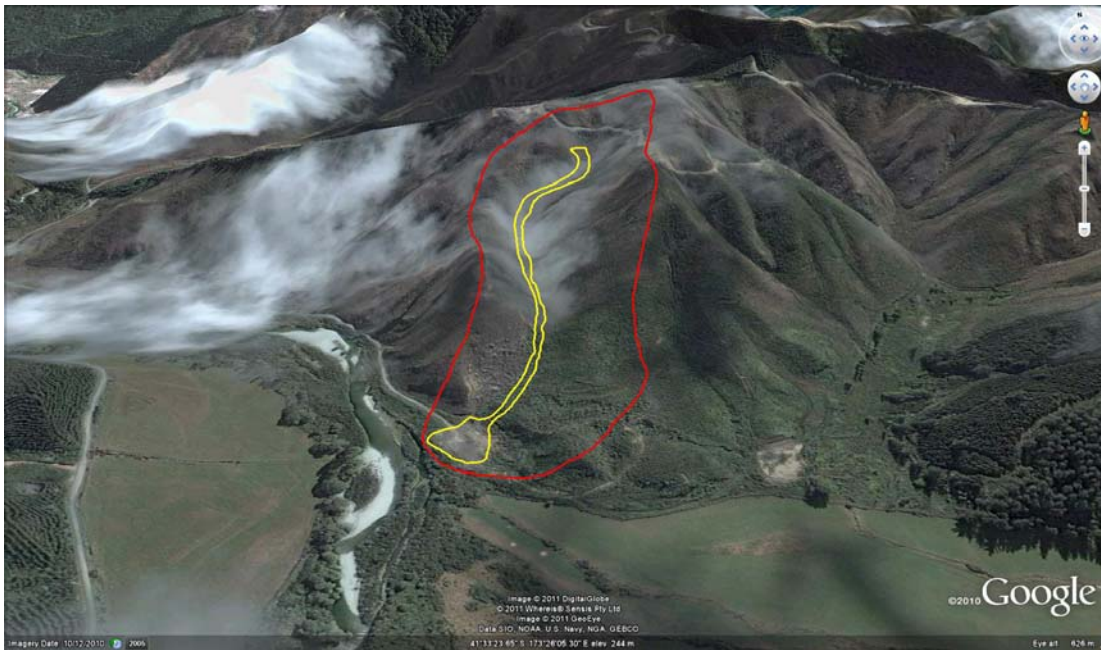


Figure A2 Site 2 erosion in pines <10 years



Site	Site 3
GPS	1635339 5399545
Land cover	Pines < 10 years
Type of erosion	3Da 3Df 3Ss
LUC Class	7e12
Infrastructure damage	Road closure

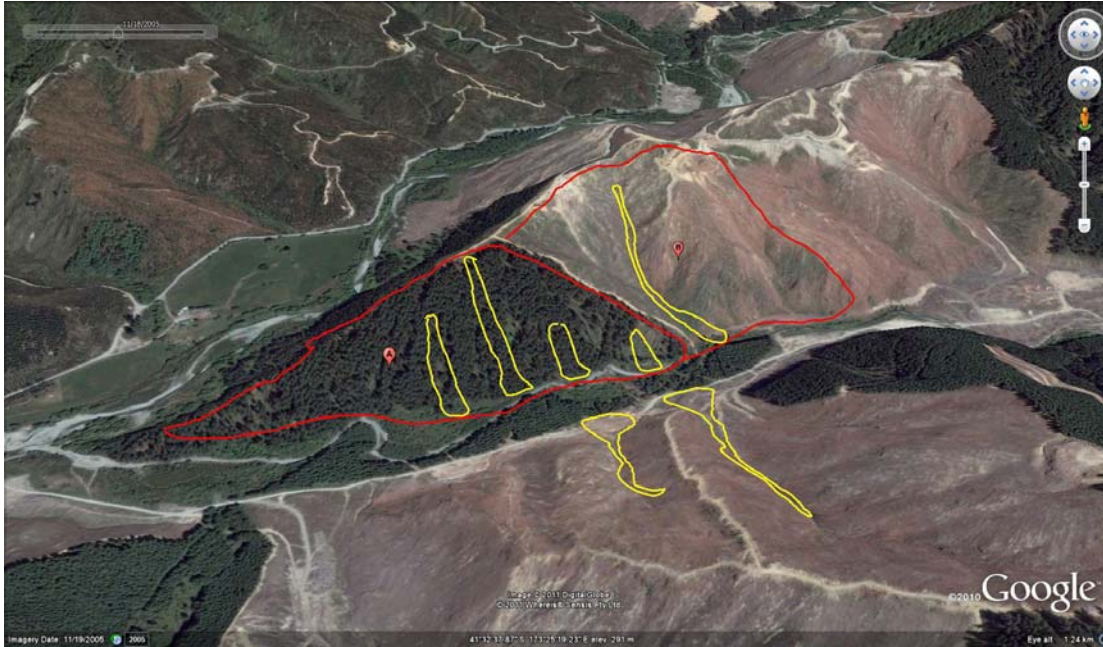


Figure A3 Site 3 erosion in pines <10 years



Some Observations of Erosion as a Result of the 28 December 2010 Storm Event

Site	Site 4
GPS	1634676 5401704
Land cover	Pines < 10 years
Type of erosion	3Da 4Df 2Ss
LUC Class	7e12
Infrastructure damage	Processing site damage

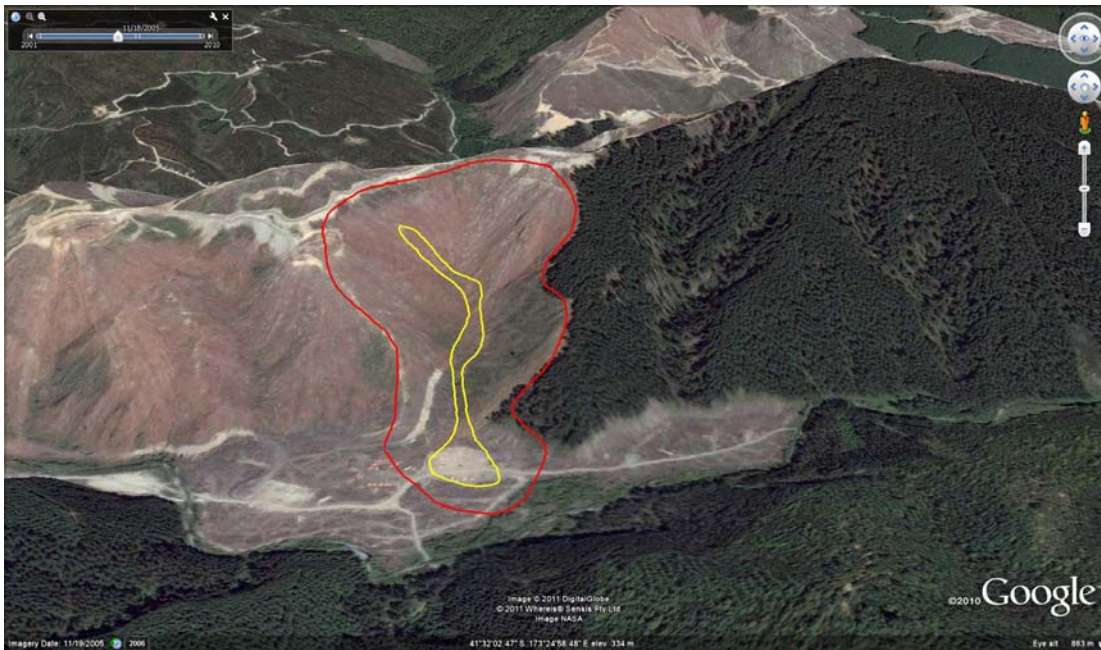


Figure A4 Site 4 erosion in pines <10 years

Site	Site 5
GPS	1634676 5402032
Land cover	Recently harvested
Type of erosion	2Da 2Df 2Ss
LUC Class	7e12
Infrastructure damage	Forestry road closure



Figure A5 Site 5 erosion in recently harvested pines



Some Observations of Erosion as a Result of the 28 December 2010 Storm Event

Site	Site 6
GPS	1638551 5402530
Land cover	Pines < 10 years
Type of erosion	3Da 1Ss
LUC Class	7e12
Infrastructure damage	Forestry road closure

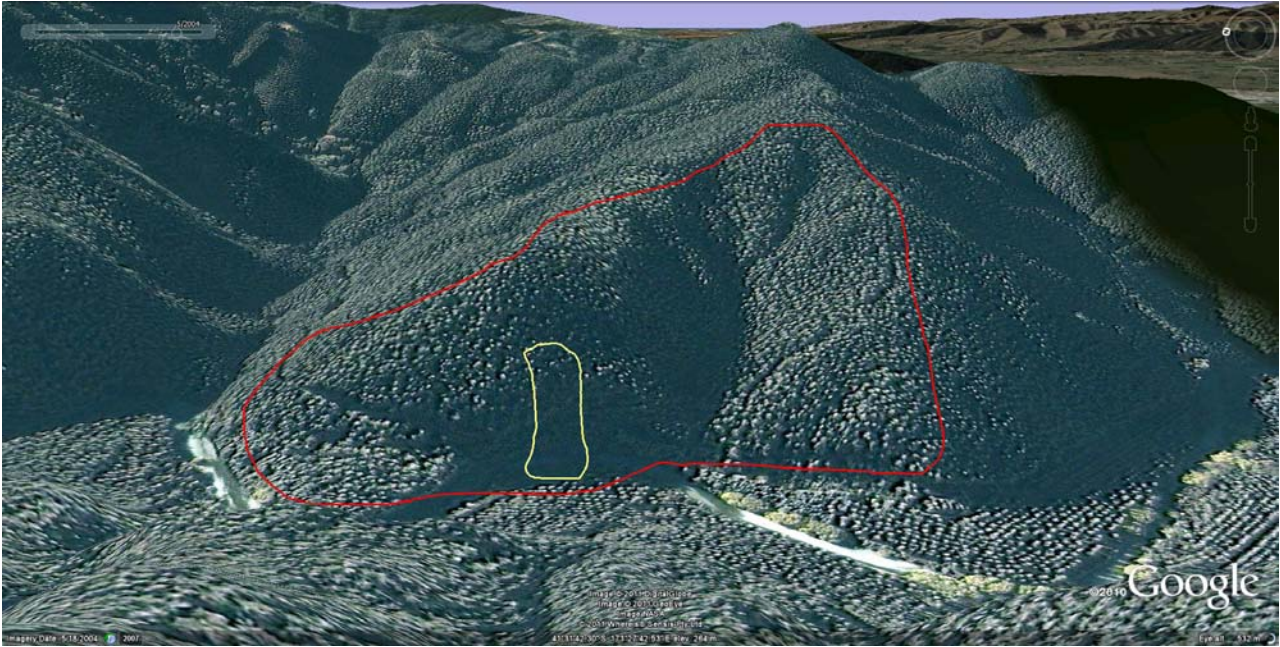


Figure A6 Site 6 erosion in pines <10 years



Site	Site 7
GPS	1649583 5407315
Land cover	Recently harvested
Type of erosion	2Ss 2Da 2Df
LUC Class	7e12
Infrastructure damage	Public road closure

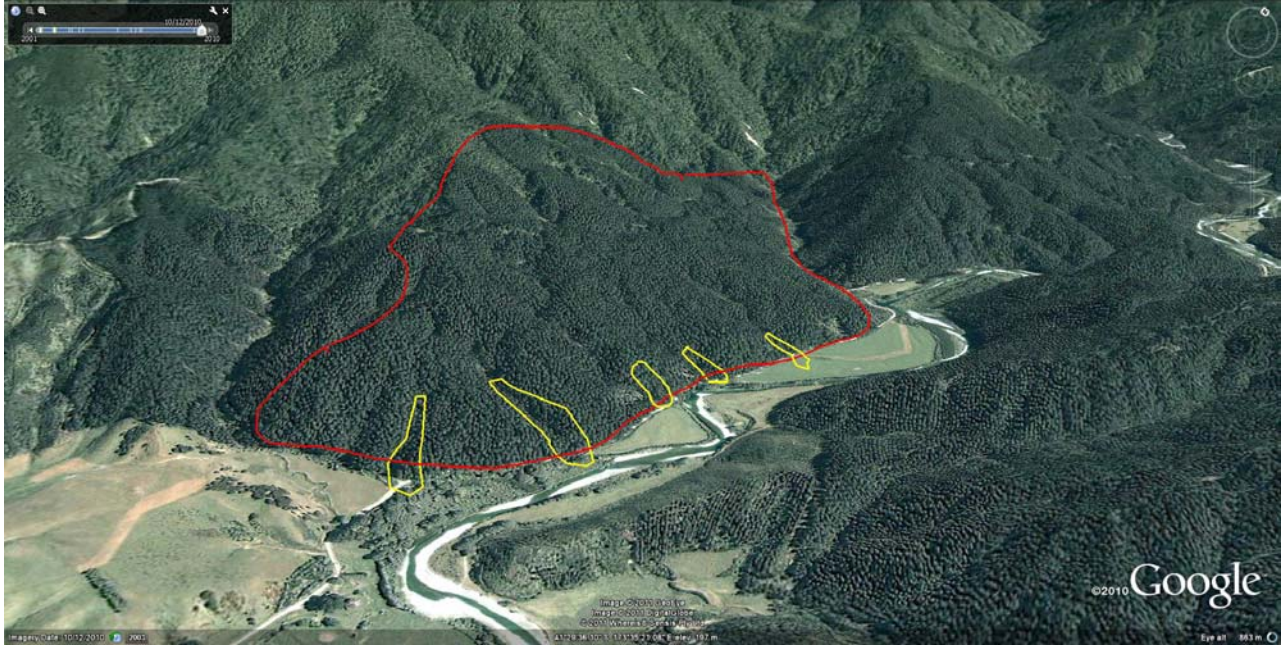


Figure A7 Site 7 erosion in recently harvested pines



Some Observations of Erosion as a Result of the 28 December 2010 Storm Event

Site	Site 8
GPS	1649622 5407225
Land cover	Recently harvested
Type of erosion	3Ss 3Da 2Df
LUC Class	7e12
Infrastructure damage	Public road closure

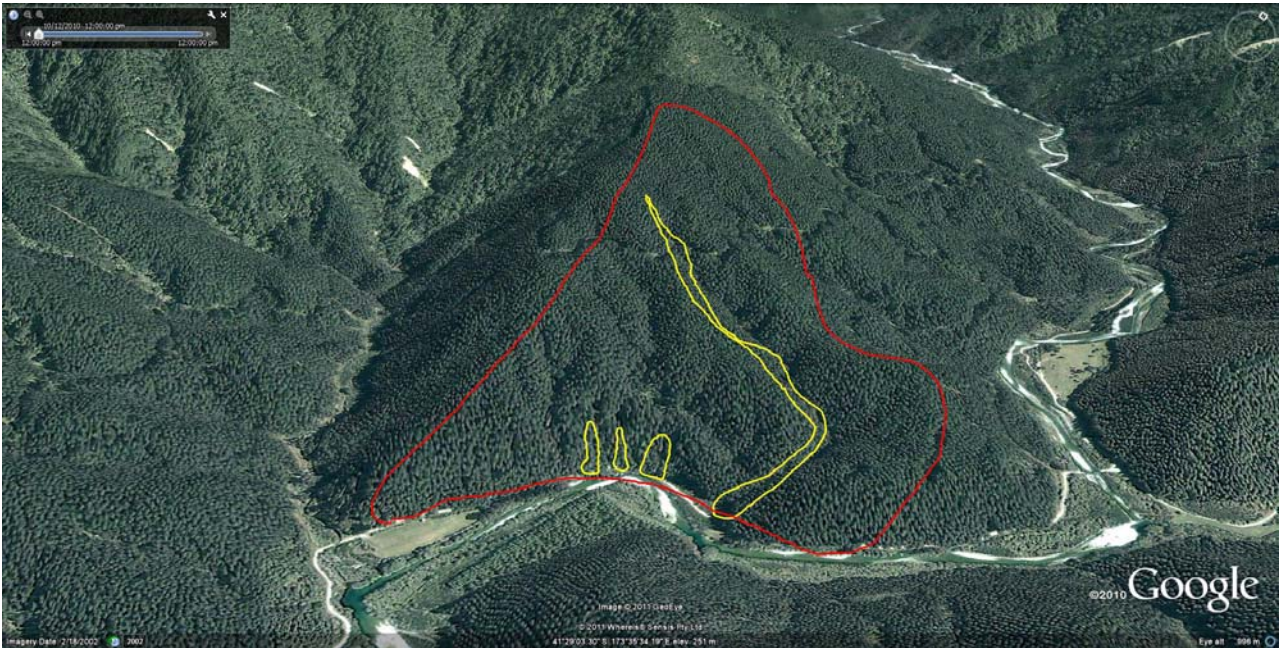


Figure A8 Site 8 erosion in recently harvested pines



Site	Site 9
GPS	1649251 5407244
Land cover	Recently harvested
Type of erosion	2Ss 4Da
LUC Class	7e12
Infrastructure damage	Forestry road closure

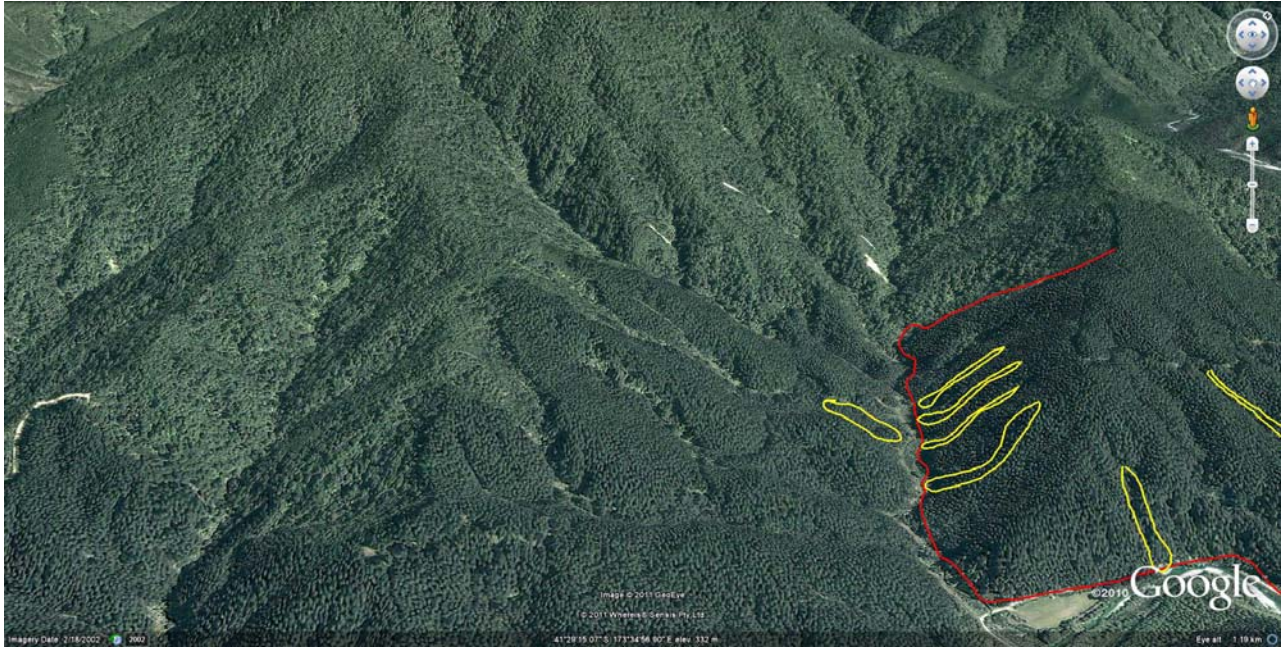


Figure A9 Site 9 erosion in recently harvested pines



Some Observations of Erosion as a Result of the 28 December 2010 Storm Event

Site	Site 10 a, b, c, d
GPS	1657360 5410863
Land cover - a	Recently harvested
Land cover - b	Recently harvested
Land cover - c	Recently harvested
Land cover - d	Recently harvested
Type of erosion - a	2Ss 3Da 3Df
Type of erosion - b	2Ss 2Da 3Df
Type of erosion - c	3Ss 2Da 3Df
Type of erosion - d	3Ss 4Da 4Df
LUC Class - a	7e12
LUC Class - b	7e12
LUC Class - c	7e12
LUC Class - d	7e12
Infrastructure damage	Public road closure

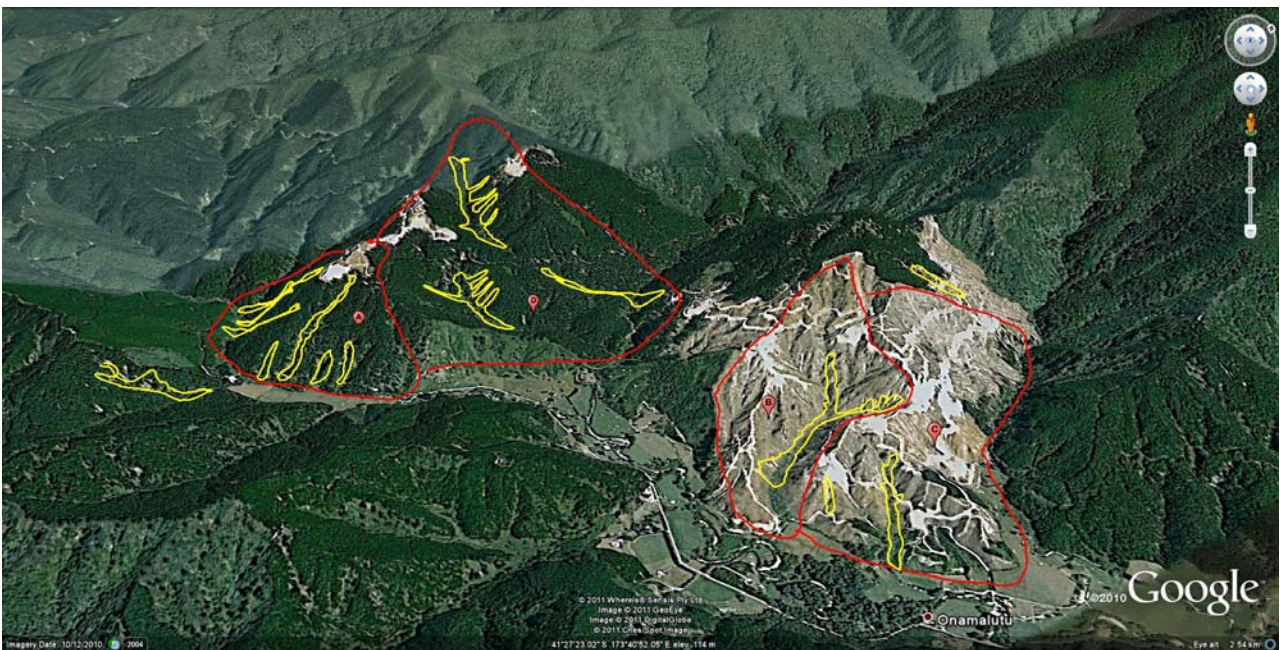


Figure A10 Site 10 a, b, c, d erosion in recently harvested pines



Some Observations of Erosion as a Result of the 28 December 2010 Storm Event

Site	Site 22 a, b, c, d
GPS	1656825 5426409
Land cover - a	Pines less than 10 years
Land cover - b	Pines less than 10 years
Land cover - c	Pines less than 10 years
Land cover - d	Pines less than 10 years
Type of erosion - a	2Ss 2Da
Type of erosion - b	3Ss 3Da 3Df
Type of erosion - c	3Ss 3Da
Type of erosion - d	1Ss 1Da
LUC Class - a	7e9
LUC Class - b	7e9
LUC Class - c	7e9
LUC Class - d	6e11
Infrastructure damage	Public road closure; culvert-bridge damage

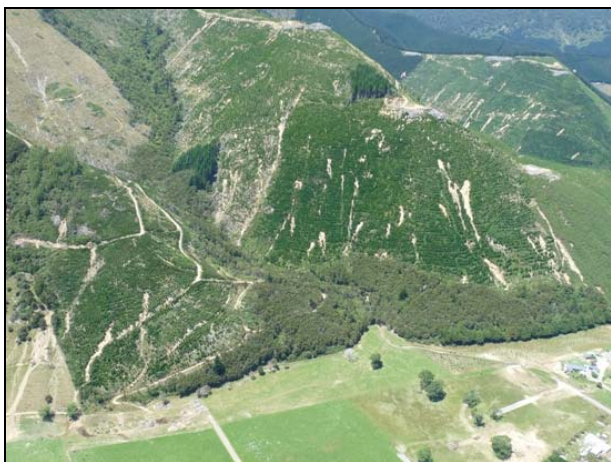
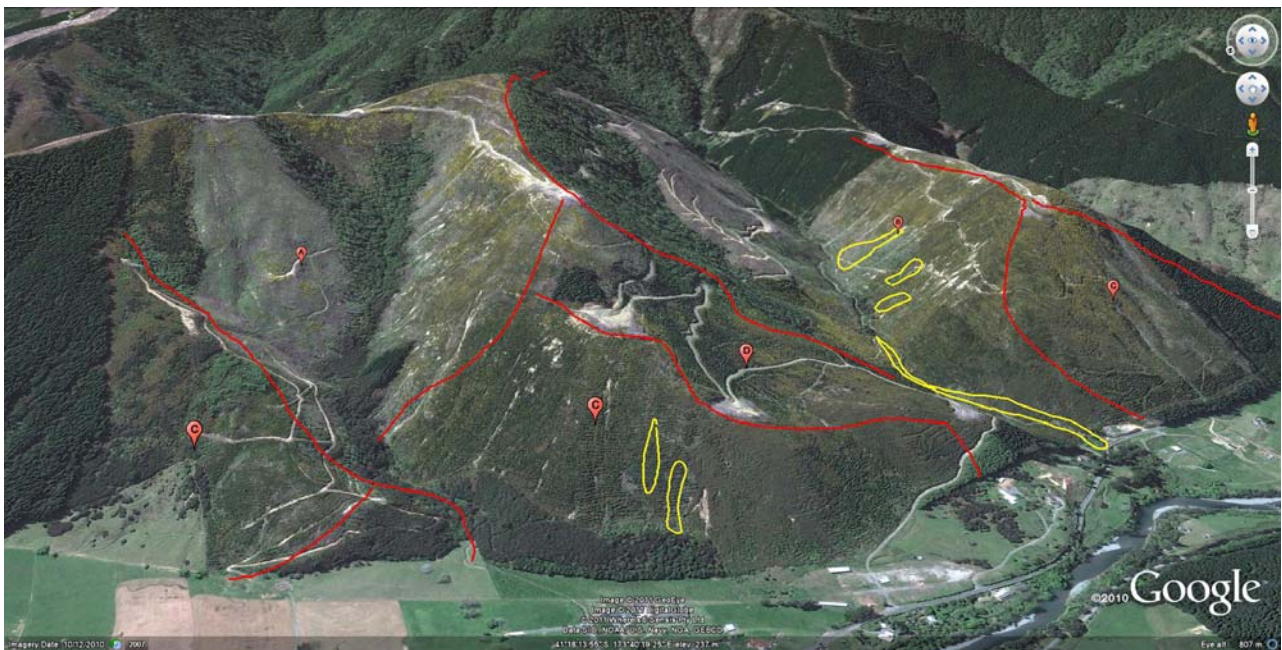


Figure A22 Site 22 a, b, c, d erosion in pines >10 years



Site	Site 23
GPS	1666178 5430944
Land cover	Scrub
Type of erosion	1Ss
LUC Class	6e11
Infrastructure damage	Public road closure

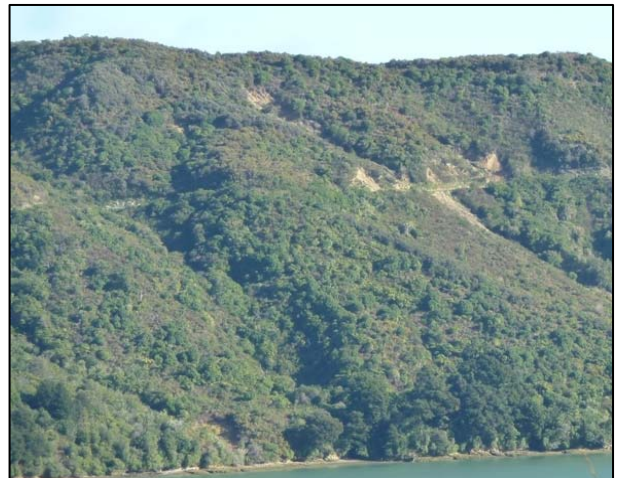


Figure A23 Site 23 erosion in pines >10 years



Some Observations of Erosion as a Result of the 28 December 2010 Storm Event

Site	Site 24 a, b, c
GPS	1674091 5439130
Land cover - a	Recently harvested
Land cover - b	Pines > 10 years
Land cover - c	Recently harvested
Type of erosion - a	2Ss 3Da
Type of erosion - b	0Ss 0Da
Type of erosion - c	2Ss 3Da
LUC Class	7e9
Infrastructure damage	None noted – slip into ocean



Figure A24 Site 24 a, b, c erosion in recently harvested and pines >10 years



Site	Site 25
GPS	1676553 5434339
Land cover	Pines < 10 years
Type of erosion	2Ss 3Da 3Df
LUC Class	7e9
Infrastructure damage	Public road closure; culvert damage

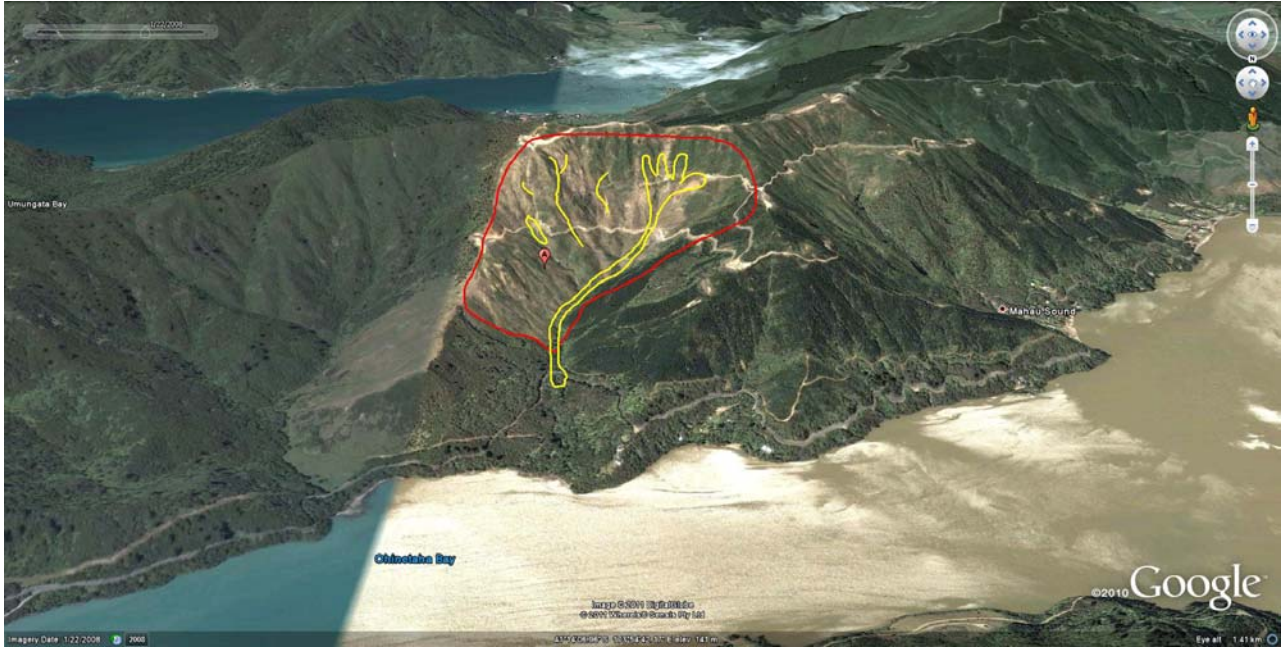


Figure A25 Site 25 erosion in pines <10 years



Some Observations of Erosion as a Result of the 28 December 2010 Storm Event

Site	Site 26
GPS	1677065 5434071
Land cover - a	Scrub
Type of erosion - a	1Ss 2Da
LUC Class	7e9
Infrastructure damage	None noted



Figure A26 Site 26 erosion in scrub



Site	Site 27 a, b, c
GPS	1672856 5429526
Land cover - a	Recently harvested
Land cover - b	Pines < 10 years and recently harvested
Land cover - c	Recently harvested
Type of erosion - a	2Ss 2Da
Type of erosion - b	2Ss 3Da 3Df
Type of erosion - c	1Ss
LUC Class - a	7e9
LUC Class - b	7e9
LUC Class - c	6e11
Infrastructure damage	Public road closure



Figure A27 Site 27 a, b, c erosion in pines <10 years and recently harvested



Some Observations of Erosion as a Result of the 28 December 2010 Storm Event

Site	Site 28 a, b
GPS	1672244 5427458
Land cover - a	Recently harvested
Land cover - b	Recently harvested
Type of erosion - a	2Ss 2Da 2Df
Type of erosion - b	2Ss 2Da 4Df
LUC Class - a	6e11
LUC Class - b	7e12
Infrastructure damage	Public road closure

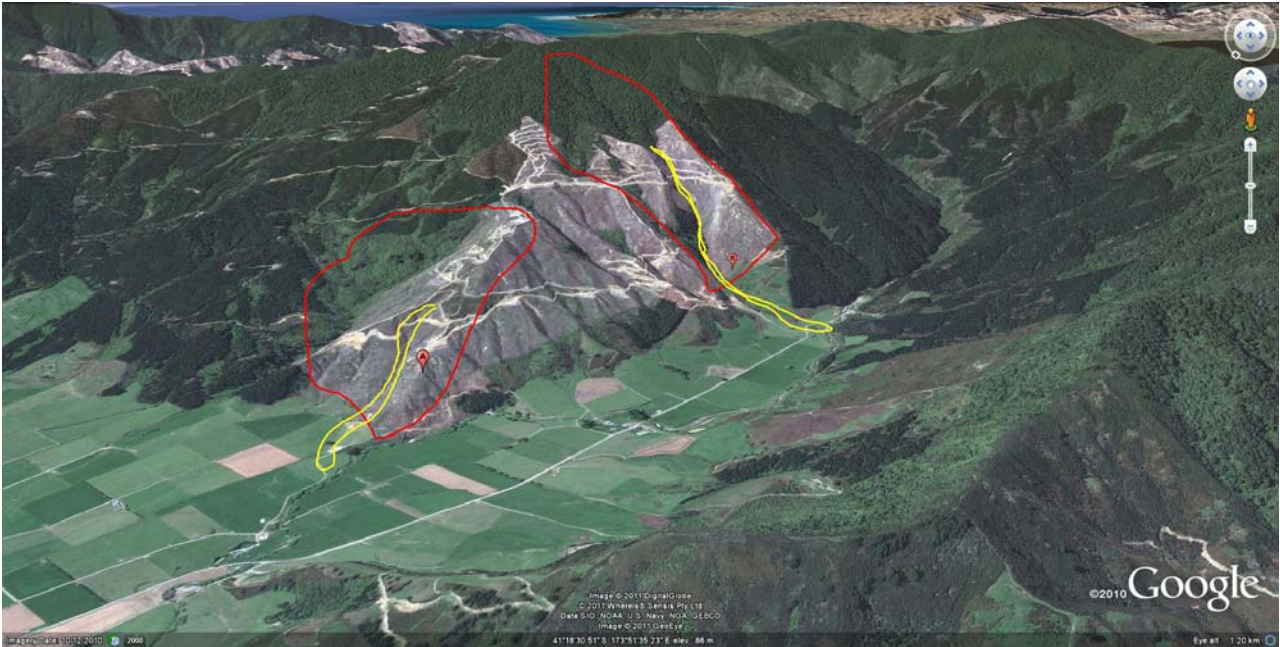


Figure A28 Site 28 a, b erosion recently harvested pines



Site	Site 29
GPS	1660326 5411035
Land cover - a	Pines >10 years
Type of erosion - a	2Da 2Df
LUC Class	7e12
Infrastructure damage	Forestry road closure

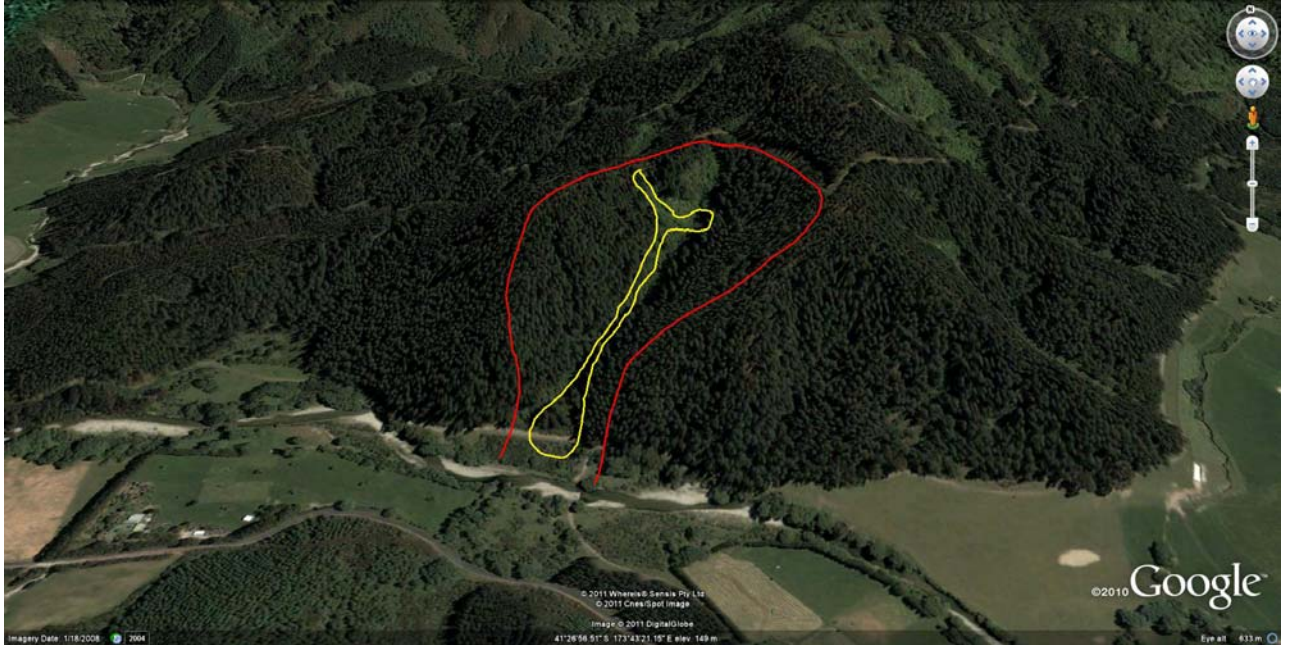


Figure A29 Site 29 erosion in pines >10 years



Some Observations of Erosion as a Result of the 28 December 2010 Storm Event

Site	Site 30
GPS	1665207 5412831
Land cover	Exotic pasture
Type of erosion	2Ss 1Da
LUC Class	6e11
Infrastructure damage	None noted

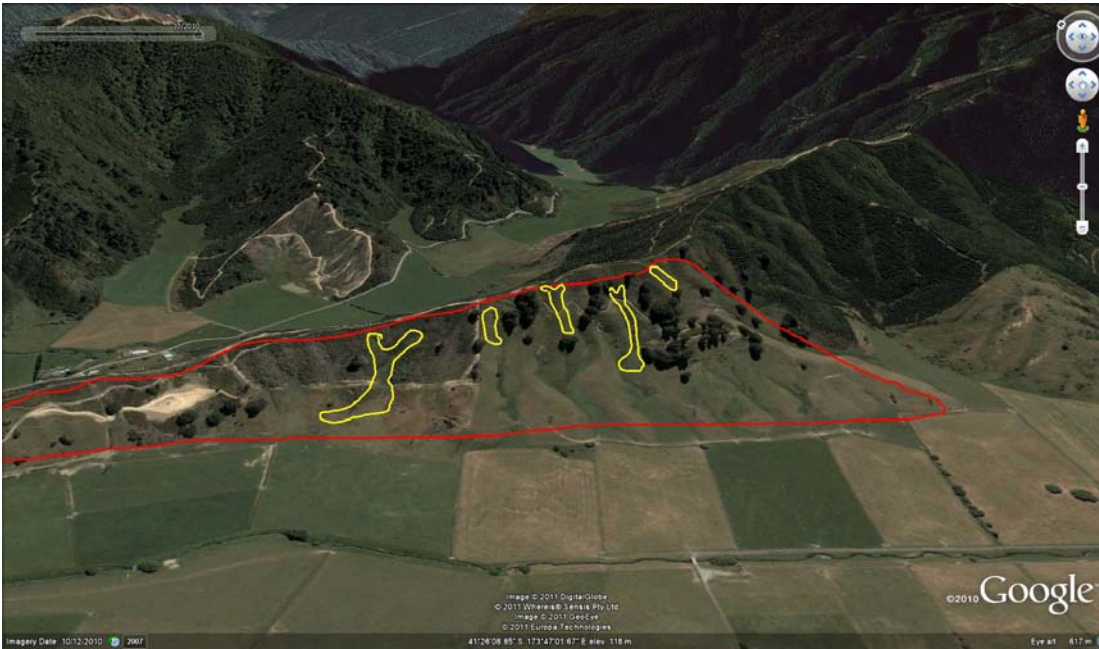


Figure A30 Site 30 erosion in exotic pasture



Site	Site 31 a, b, c, d, e
GPS	1664702 5414603
Land cover - a	Exotic pasture
Land cover - b	Exotic pasture
Land cover - c	Scrub
Land cover - d	Exotic pasture
Land cover - e	Exotic pasture
Type of erosion - a	2Ss
Type of erosion - b	2Ss 1Da
Type of erosion - c	0Ss 0Da
Type of erosion - d	2Ss
Type of erosion - e	1Ss
LUC Class - a	7e12
LUC Class - b	7e12
LUC Class - c	7e12
LUC Class - d	6e11
LUC Class - e	6e11
Infrastructure damage	None noted

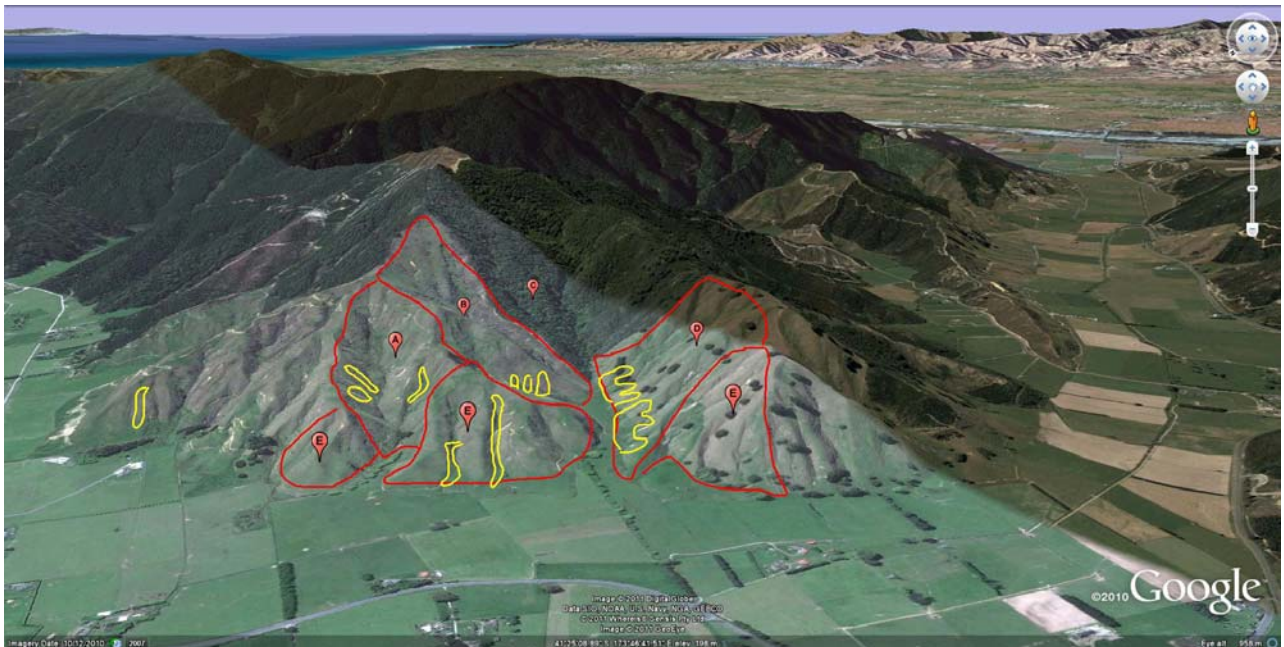


Figure A31 Site 31 a, b, c, d, e erosion in exotic pasture and scrub



Some Observations of Erosion as a Result of the 28 December 2010 Storm Event

Site	Site 32 a, b, c, d, e
GPS	1664912 5418102
Land cover - a	Exotic pasture
Land cover - b	Exotic pasture
Land cover - c	Exotic pasture
Land cover - d	Scrub/bush
Land cover - e	Scrub
Type of erosion - a	1Ss 1Da
Type of erosion - b	1Ss 2Su
Type of erosion - c	2Ss
Type of erosion - d	0Ss
Type of erosion - e	1Ss 0Da
LUC Class - a	7e9
LUC Class - b	6e11
LUC Class - c	6e11
LUC Class - d	7e9 upper slope; 6e11 lower slope
LUC Class - e	7e9 with patches of 8e2 on bluffs
Infrastructure damage	None noted

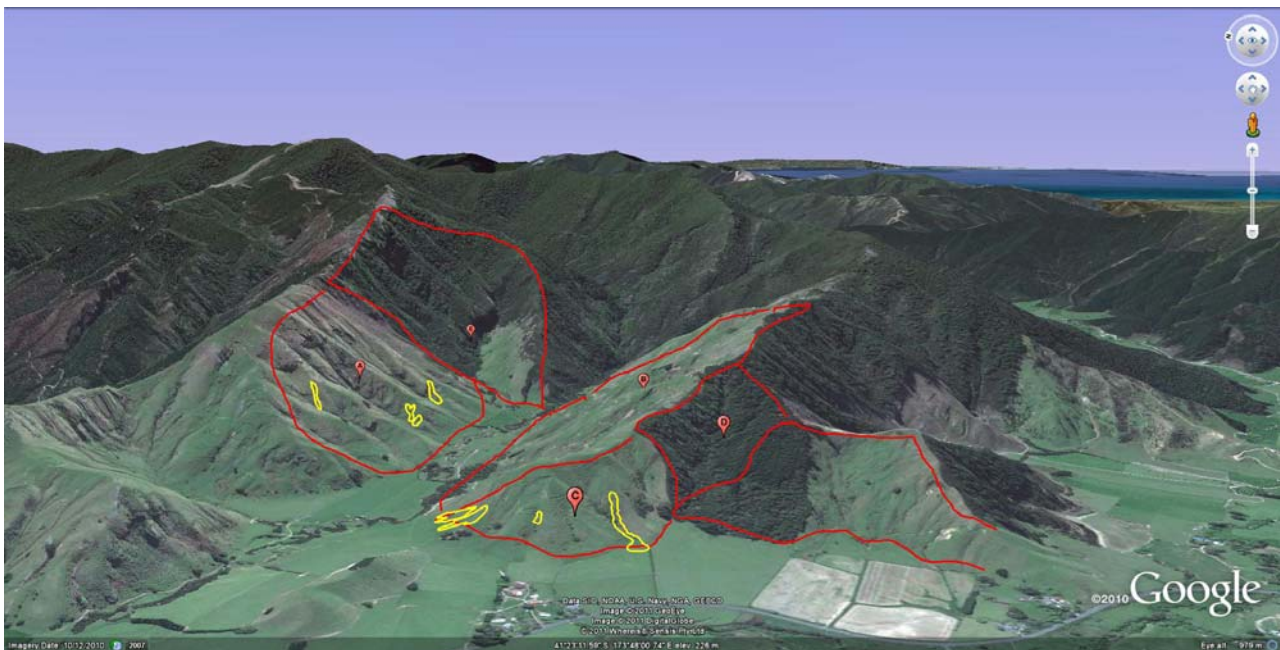


Figure A32 Site 32 a, b, c, d, e erosion in exotic pasture and scrub/bush



Site	Site 33
GPS	1644355 540605
Land cover	Pines > 10 years
Type of erosion	2Da 4Df 2Ss
LUC Class	7e12
Infrastructure damage	Forestry road damage



Figure A33 Site 33 erosion in pines > 10 years



Site	Site 11
GPS	1662324 5414920
Land cover	Pines < 10 years
Type of erosion	3Da 3Df
LUC Class	7e12
Infrastructure damage	None noted

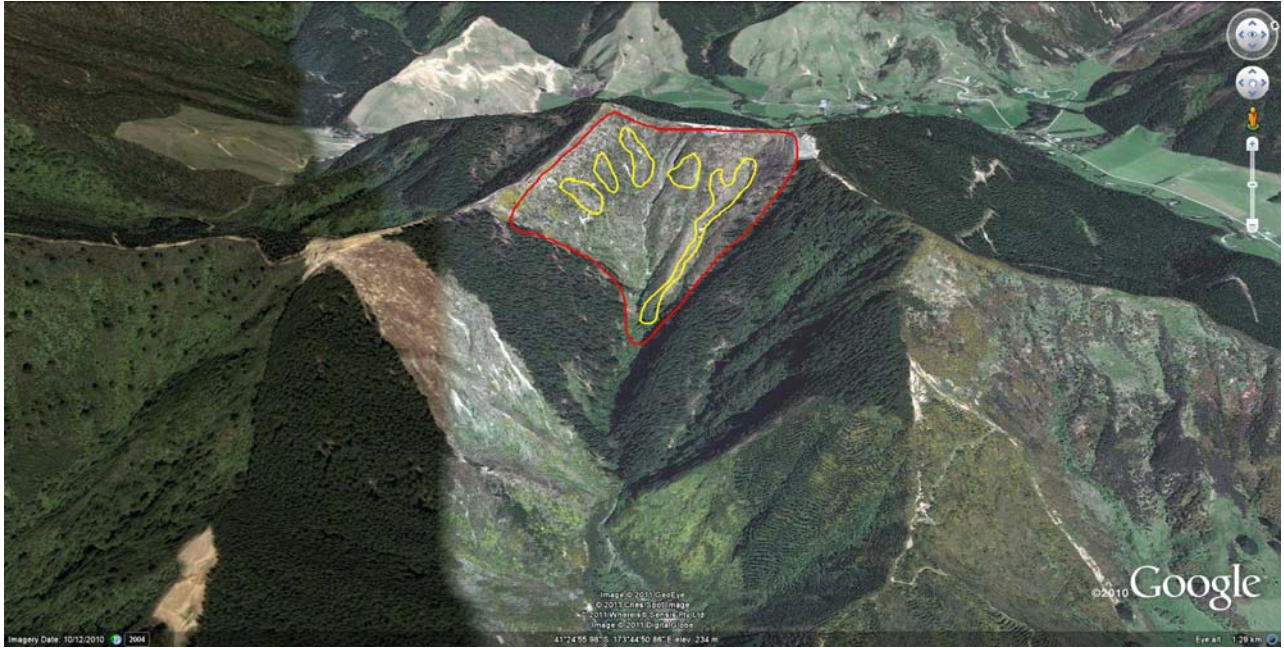


Figure A11 Site 11 erosion in pines <10 years



Some Observations of Erosion as a Result of the 28 December 2010 Storm Event

Site	Site 12
GPS	1663456 5416047
Land cover	Exotic pasture
Type of erosion - a	1Ss
LUC Class	6e11
Infrastructure damage	None noted

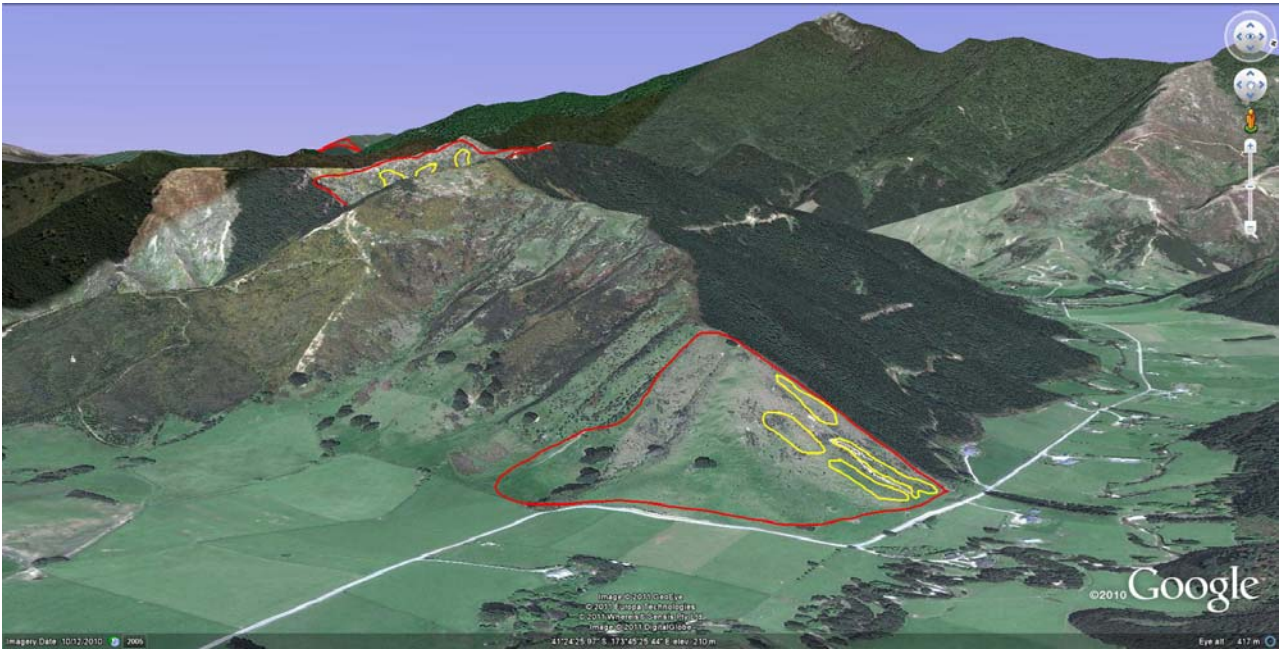


Figure A12 Site 12 erosion in exotic pasture

Site	Site 13 a, b
GPS	1663449 5417284
Land cover - a	Scrub
Land cover - b	Exotic pasture
Type of erosion - a	2Ss 2Da
Type of erosion - b	2Ss
LUC Class - a	7e9
LUC Class - b	6e11
Infrastructure damage	None noted

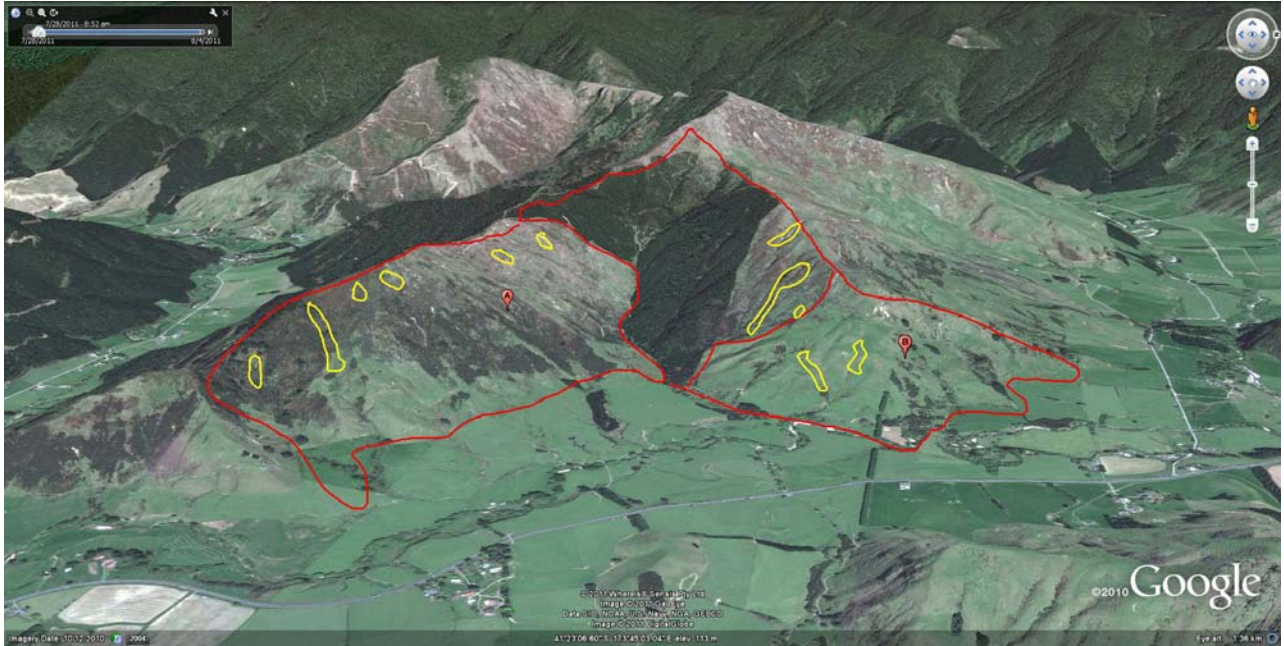


Figure A13 Site 13 a, b erosion in recently harvested pines



Some Observations of Erosion as a Result of the 28 December 2010 Storm Event

Site	Site 14 a, b
GPS	1661881 5418380
Land cover - a	Pines > 10
Land cover - b	Scrub
Type of erosion - a	2Ss 2Da 2Df
Type of erosion - b	2Ss 2Da
LUC Class - a	7e9
LUC Class - b	7e9
Infrastructure damage	None noted

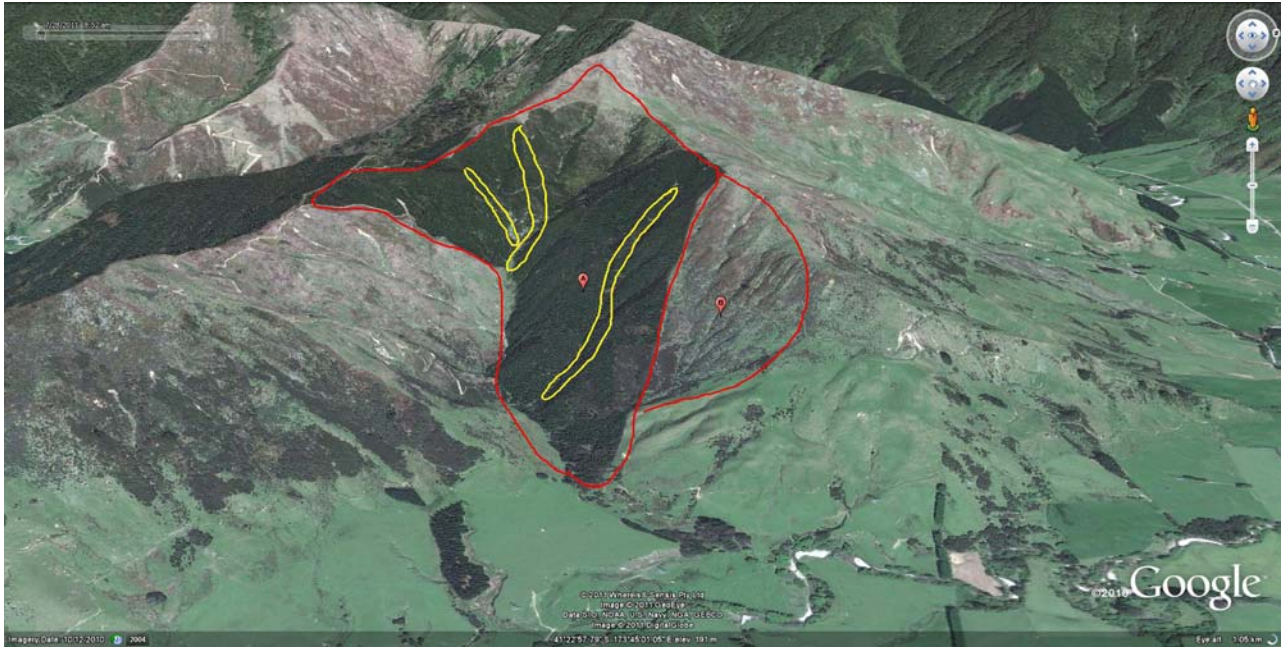


Figure A14 Site 14 erosion in pines >10 years

Site	Site 15 a
GPS	1661818 5421444
Land cover - a	Recently harvested
Land cover - b	Recently harvested
Type of erosion - a	2Ss 2Df
LUC Class - a	6e11
Infrastructure damage	Forestry road closure

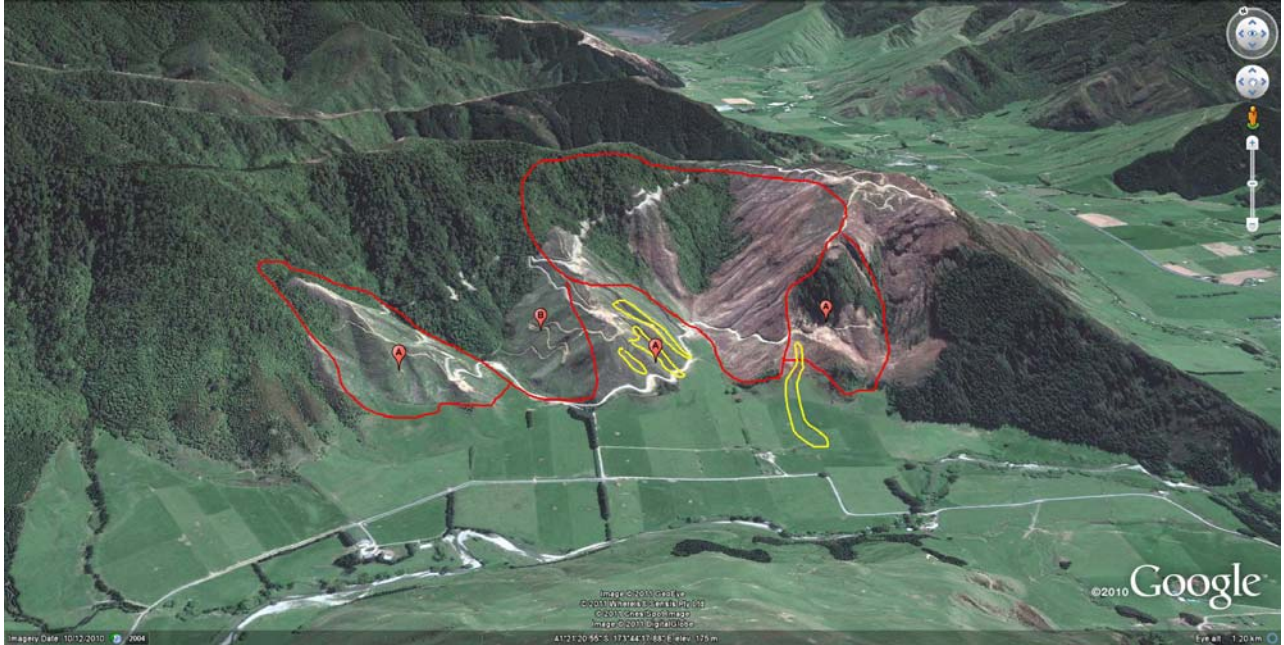


Figure A15 Site 15 a, erosion in recently harvested pine



Some Observations of Erosion as a Result of the 28 December 2010 Storm Event

Site	Site 16
GPS	1663038 5422530
Land cover	Scrub
Type of erosion	2Ss 2Da 2Df
LUC Class	Upper part of slope 7e9 and lower part is 6e11
Infrastructure damage	None noted



Figure A16 Site 16 erosion in scrub/bush

Site	Site 17 a, b
GPS	1663722 5426745
Land cover - a	Recently harvested
Land cover - b	Recently harvested
Type of erosion - a	2Ss 3Da 4Df
Type of erosion - b	2Ss 1Da
LUC Class - a	8e2
LUC Class - b	Upper part of slope 7e9 and 6e11 for lower part
Infrastructure damage	Public road closure; property damage

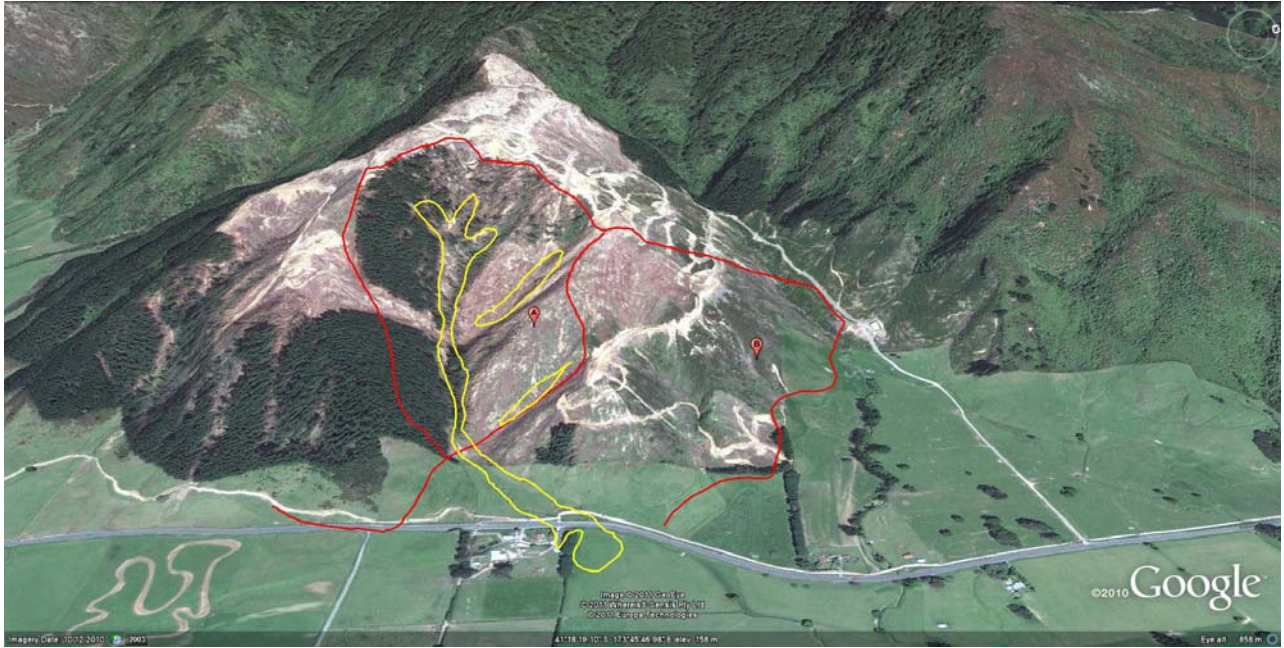


Figure A17 Site 17 a, b erosion in recently harvested pines



Some Observations of Erosion as a Result of the 28 December 2010 Storm Event

Site	Site 18
GPS	1656715 5426745
Land cover	Recently harvested
Type of erosion	2Ss 3Da 3Df
LUC Class	6e11
Infrastructure damage	None noted

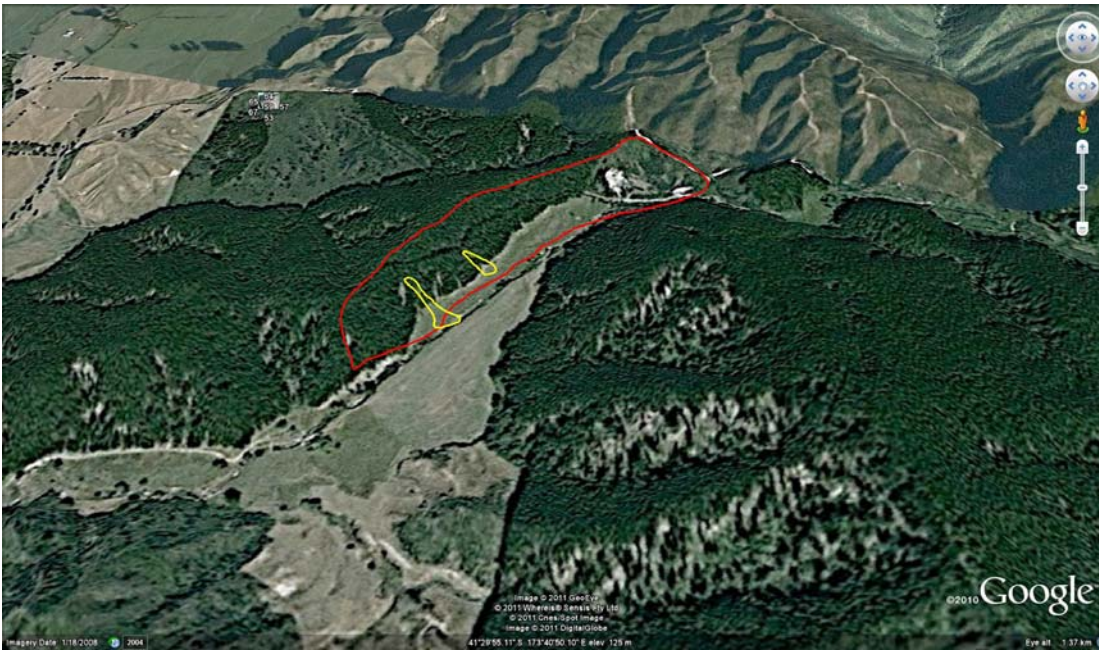


Figure A18 Site 18 erosion in recently harvested pines



Site	Site 19
GPS	1653036 5404685
Land cover	Scrub
Type of erosion	1Da 1Df
LUC Class	7e9
Infrastructure damage	None noted



Figure A19 Site 19 erosion in scrub/bush



Some Observations of Erosion as a Result of the 28 December 2010 Storm Event

Site	Site 20 a, b
GPS	1659535 5429238
Land cover - a	Recently harvested
Land cover - b	Recently harvested
Type of erosion - a	3Ss 2Da 2Df
Type of erosion - b	2Ss 3Da
LUC Class - a	7e9
LUC Class - b	7e9
Infrastructure damage	Public road closure

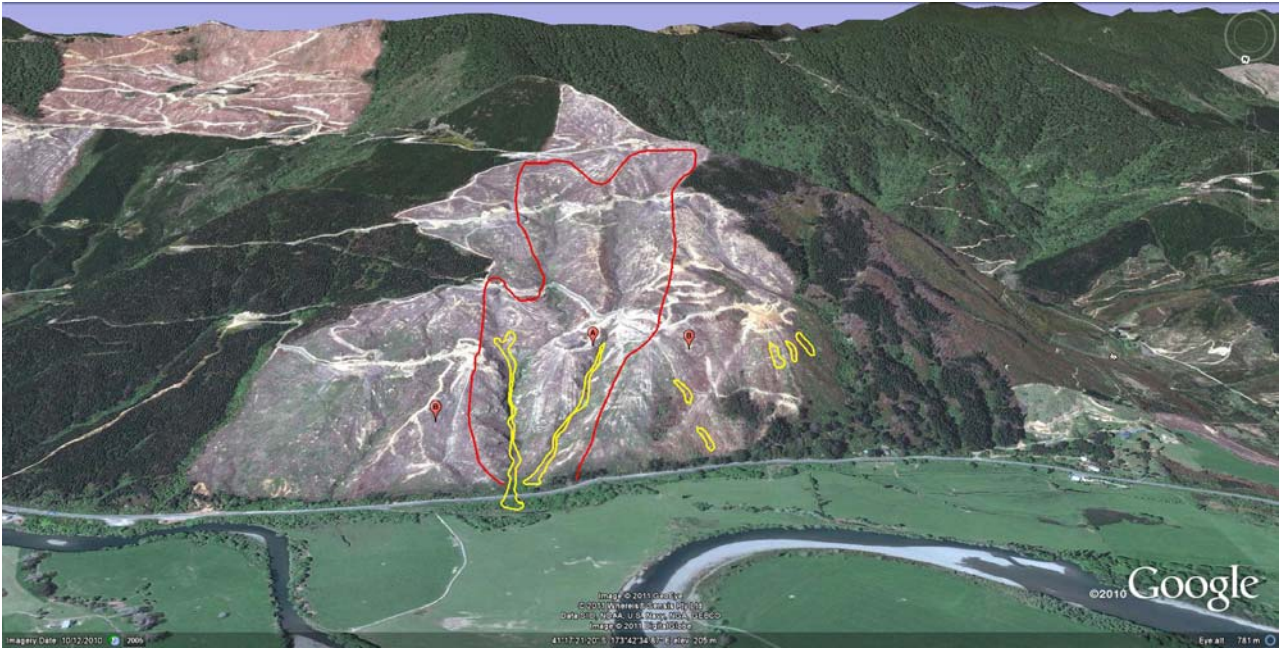


Figure A20 Site 20 a, b erosion in recently harvested pines

Site	Site 21
GPS	1657366 5428870
Land cover	Pines > 10 years
Type of erosion	3Ss 4Da
LUC Class	8e2 above forestry road but 7e9 below forestry road
Infrastructure damage	Pubic road closure

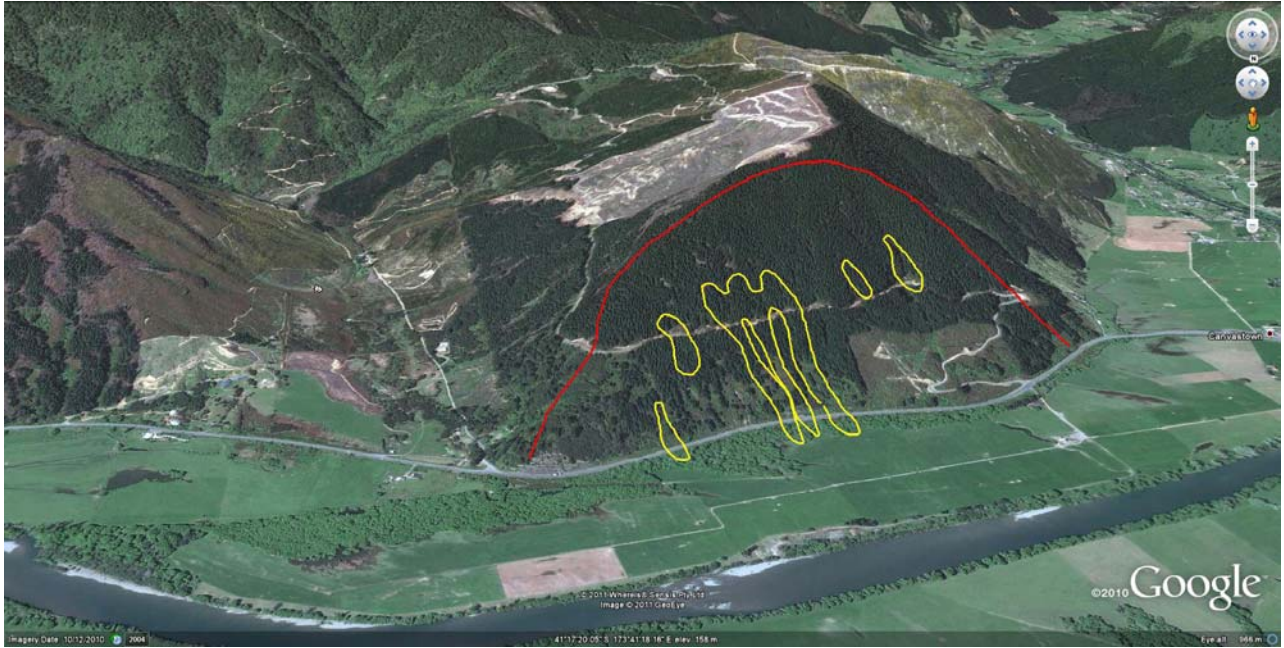


Figure A21 Site 21 erosion in pines <10 years