

LAWA
 LAND AIR WATER AOTEAROA





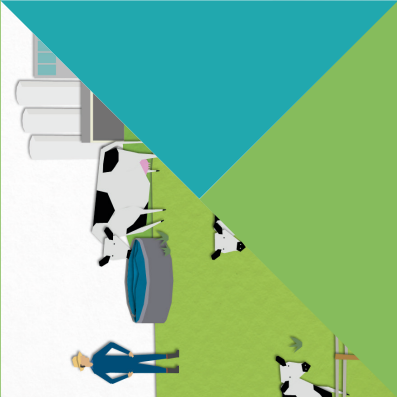









www.lawa.org.nz



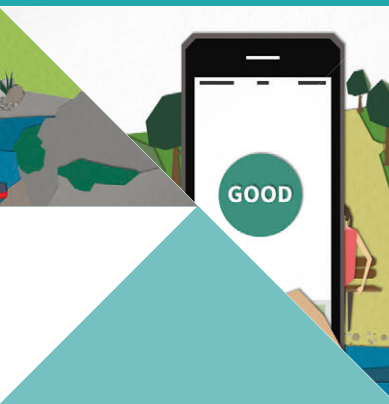


Everyone in New Zealand has an interest in the quality of our freshwater. We each use 200 litres a day of water. It's home to over 35 species of native fish, two thirds of which are protected. It grows our food, it powers our businesses and we enjoy it in our leisure time.

There is a lot of information out there and a lot of research going on involving a lot of people. To share all this information in one place regional councils joined with the Cawthron Institute and the Ministry for the Environment and with the support of Massey University and the

Tindall Foundation developed LAWA — Land, Air, Water Aotearoa. LAWA displays the water quality data collected by regional councils at over 1100 sites around New Zealand.

These are analysed by the council scientists and the Ministry for the Environment.



The Cawthron Institute checks the data has been collected, processed and analysed against best practice guidelines.

Designers from Open Lab at Massey University packaged up the science into an easy to access, easy to understand format.

LAWA helps you understand

what's happening in our waterways by connecting you with information about the quality of our water at a site, catchment, region and national level. You can discover how nutrients, phosphorus and bacteria affect a stretch of river or check out how suitable

certain spots are for swimming and other recreational activities.

But it's not all about what we can tell you. You can use LAWA to report your own river observations, share news or let people know about river events in your region.

Visit LAWA to meet your rivers and share your stories.

LAWA — connecting you with New Zealand's rivers

www.lawa.org.nz