



MARLBOROUGH  
DISTRICT COUNCIL

# Living in Marlborough



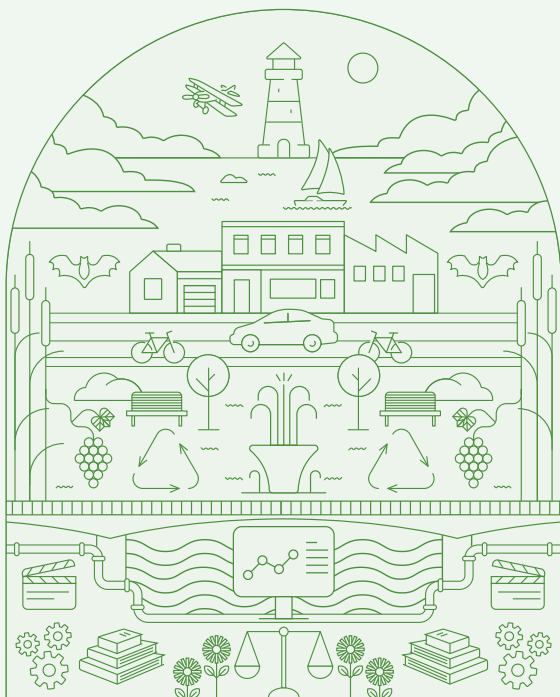
This brochure provides you with some information on Marlborough District Council and some of the services we provide.

Visit our website [marlborough.govt.nz](http://marlborough.govt.nz)

Follow our Facebook page [@MarIDistCouncil](https://www.facebook.com/MarIDistCouncil)

Phone our Customer Service Centre on **03 520 7400** to speak to one of our friendly staff or visit us at 15 Seymour Street, Blenheim or 2 Dublin Street, Picton.

Download our free **Antenno alerting app** to your Apple or Android phone to stay informed - go to the App store, search 'Antenno' and look for the orange logo.



## Who we are

Marlborough District Council is a unitary authority which means we undertake both Regional Council and District/City Council functions.

We are responsible for a range of services including roads and reserves; rubbish and recycling; footpaths and street trees; swimming pools, sports parks and playgrounds; drinking water, stormwater and wastewater; emergency management and flood protection; libraries and public toilets; biosecurity and building control; environmental science, planning and consenting.

## Your rates

Your rates help fund Council services. Council's financial year runs from 1 July to 30 June and rates invoices are sent out quarterly:



A range of payment options, including direct debit (weekly, fortnightly, monthly, quarterly and annually), EFTPOS and internet banking are available. To arrange payments and for general rating information visit our website or contact our Customer Service Centre.

 Search 'Rates' on our website

## Dogs

If you're new to Marlborough it's important to remember to register your dog with us.

All dogs over the age of three months must be registered. The annual registration year runs from 1 July to 30 June.

For more information, phone Animal Control on **03 520 9033**, email [animalcontrol@xtra.co.nz](mailto:animalcontrol@xtra.co.nz), or visit 58 Main Street, Blenheim.

 Search 'Dogs' on our website


## Rubbish and recycling

Council provides a kerbside rubbish and recycling collection if you live within the service area.

Until 30 June 2024 additional rubbish bags can be purchased from Council or supermarkets.

From 1 July 2024 the old rubbish bag and recycling crate system will be replaced with a new wheelie bin set and crate.

Council also runs a number of transfer stations throughout the district along with the Reuse Shop, Greenwaste Facility and Landfill on Wither Road.

 Search 'Recycling and Resource Recovery' on our website

## Emergency management

Marlborough has experienced several emergencies over the past few years. Moving into a new home is a great time to get prepared in case an emergency occurs.

The Get Ready website [getready.govt.nz](https://getready.govt.nz) has information on how to prepare yourself for many types of emergency events.

Be sure to download the Antenno alerting app on your smartphone.

Our team at Marlborough Emergency Management works with our community to ensure we're prepared for an emergency. They are responsible for the delivery of civil defence and emergency management response throughout our region.

 Search 'Emergency Management' on our website

## Have your say

Council consults with the community on a range of topics every year. Your views are important and we encourage you to take part, engage with us, and have your say by providing your feedback on issues you are interested in or passionate about.

 Look for the 'Have your Say' tile on our website homepage for a list of current consultations

## Libraries and art gallery


We are fortunate to have two libraries - one in Blenheim and one in Picton.

Te Kahu o Waipuna - Marlborough Library and Art Gallery is located at 15 High Street, Blenheim.

This new multi-purpose facility includes a children and teens space, dedicated meeting rooms and computer areas, and a café. The library not only offers books, magazines, newspapers and online services; it also runs activities and classes for young and old.

Waitohi Whare Mātauranga - Picton Library and Service Centre is located at 2 Dublin Street, Picton. Council customer service representatives are also able to assist you with general Council enquiries.

Visit the Marlborough District Libraries website [marlboroughlibraries.govt.nz](http://marlboroughlibraries.govt.nz) to find out more or phone the Marlborough Library on **03 520 7491** or the Picton Library and Service Centre on **03 520 7493**. Please note both libraries are closed on public holidays.

 There are community facilities all over the region - go to our website to find out more



## Parks and open spaces

Marlborough has over 250 parks and open spaces across the district so there really is something for everyone to enjoy.

Whether you're looking for children's playgrounds or walking/running and mountain biking tracks - we have it all.

Blenheim's Pollard Park, Seymour Square, Taylor River Reserve and Wither Hills Farm Park are all iconic attractions for locals and visitors alike. The Picton Foreshore, Victoria Domain, Endeavour Park and various tracks surrounded by native bush all boast wonderful scenery.

Council is also responsible for sports grounds including Lansdowne Park - Marlborough's premier rugby ground. Lansdowne Park hosts rugby and netball in winter and touch rugby, junior cricket, softball and sand volleyball in summer.

 Search 'Parks and Open Spaces' on our website

## Follow-ME Events

There's always something to see and do in Marlborough.

Council publishes a quarterly events guide to help you find out what's happening in the region. You can call into Council's Customer Service Centre or the libraries in Blenheim and Picton to pick up a hard copy of the guide, or you can visit the Follow-ME website at [marlboroughnz.com/events/](http://marlboroughnz.com/events/)

## Marlborough Community Directory

The Marlborough Community Directory provides you with a range of information on local community groups, services, sport clubs and activities in one easy to access website at [marlborough.cab.org.nz](http://marlborough.cab.org.nz)

For more information you can phone the Citizen's Advice Bureau on **03 578 4272** or visit them at 25 Alfred Street, Blenheim.



**Welcoming  
Communities**  
TE WAHAROA KI NGĀ HĀPORI