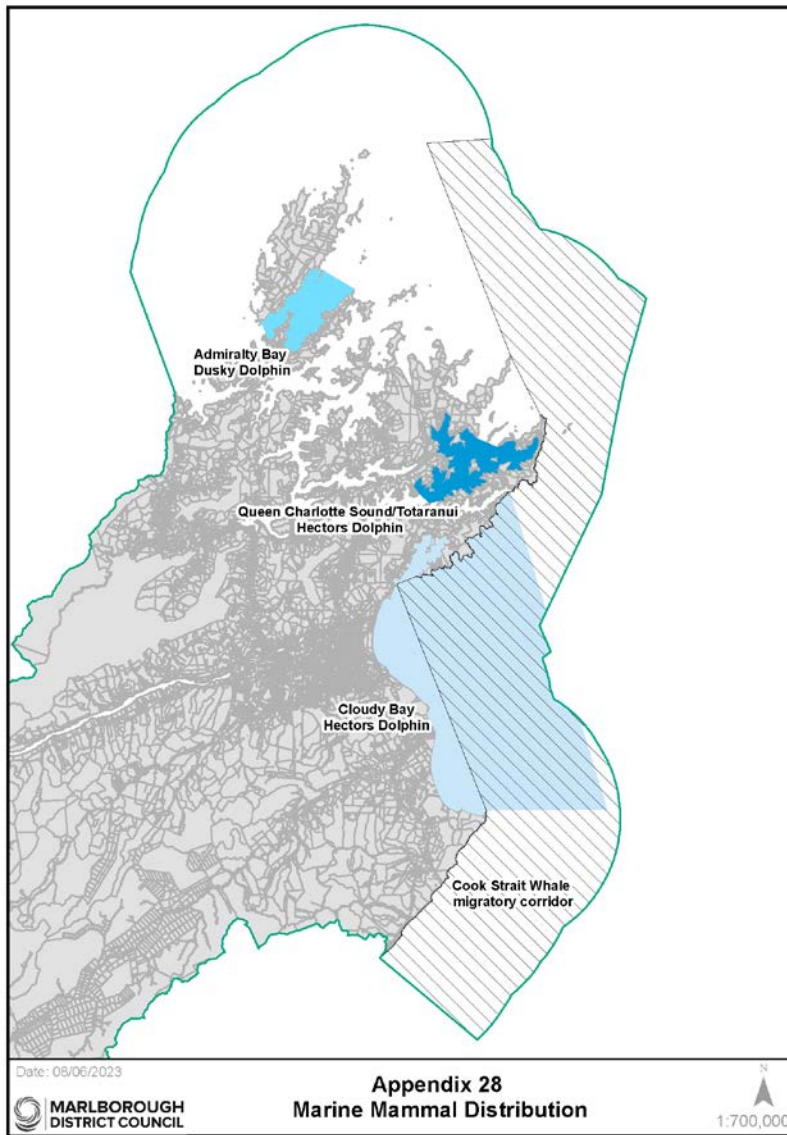


Appendix 28

Commented [1]: By consent order dated 15 February 2023

Marine Mammal Distribution Map



Hector's dolphins are distributed throughout the Queen Charlotte Sound/ Totaranui and are not

limited to the mapped distribution area. They are sighted most often in the mid-Queen Charlotte/Totaranui, especially off the western flank of Arapaoa Island from Pickersgill Island/Matapara to the south of Blumine Island/Oruawairua. Hector's dolphins are also occasionally sighted in Tory Channel/Hura Te Au. Although Onaku Bay and Endeavour Inlet, inside a line from Deep Bay to Tawa Bay, are not considered part of the core range within Queen Charlotte Sound/Totaranui, these areas are part of the distribution of Hector's dolphin.

Appeal Version