

Picton Regional Forum held at Picton Emergency Centre, Memorial Park, Picton, on Monday 4 September 2023, at 1.30 pm

Present

Clr Barbara Faulls (Chairperson), Clr Ben Minehan (Marlborough District Council), Clr Allanah Burgess (Marlborough District Council), and Clr Raylene Innes (Marlborough District Council).

Group Representatives

Raewyn Buchanan (Karakā Point & Environs Residents Association), Beryl Bowers (Picton Historical Society), Moneen Wedge (Queen Charlotte Sounds Residents Association), Fran and Frank Hartley (Marlborough Sounds Vehicle Trust), Stuart Eyes (Bike Walk Picton), Bosun Huntley (Marlborough Recreational Fishers Association), Marka Thompson, Renēe Love (Te Ātiawa o Te Waka a Māui Trust), Nicola Neilson (Marlborough District Council), Dean Heiford (Marlborough District Council), Chris Davies (Waikawa Ratepayers Association), Don Miller (Greater Whatamango Bay Residents Association), Raewyn Buchanan (Karakā Point & Environs Residents Association), Marie-Jeanette Van der Wal (Picton Anglican Holy Trinity Church, Picton Combined Churches Chair), Linda Thompson (Climate Karanga, Marlborough).

Guest Speakers

Ian Sutherland (Marlborough District Council), Nicola Neilson (Marlborough District Council), Betty Whyte (Queen Charlotte College).

Attending

Kirsty Baldwin (Marlborough District Council Secretary)

1. Apologies

Rose Prendeville (Port Marlborough) and Connie Smith (Port Marlborough), Angela McKenzie (PF Olsen Limited), Brian Henstock (Marlborough Sounds Vehicle Trust).

It was moved that the apologies be accepted, and the motion was carried.

Welcome

An opening Karakia was done by Renēe Love.

2. Confirmation of previous meeting minutes

The minutes of the meeting held on 3 July 2023 were confirmed as correct.

3. Rohe Drive Development Update (Ian Sutherland, Marlborough District Council)

- Ian Sutherland did a presentation on the above topic, which is attached as Appendix A.

Questions/Answers

- Have rainwater tanks for each house been considered?

Yes, but it was discounted as being the primary method of stormwater retention due to the increased risks of greater stormwater run-off rates if the individual owners do not maintain them properly. Endeavour Stream below the site is at or close to capacity, so the application has been designed to not increase flood flows below Rohe Drive. The proposed increased retention basin size above the Rohe embankment would be a permanent solution and in Council control, and therefore a better long-term outcome for controlling downstream flows. As mentioned in the slideshow Council is awaiting further information from the applicants on this stormwater system to ensure the community will not be at risk from increased flood flows from the development.

- Has the stormwater design been based on an average four-bedroom house?

The design has been based on a 100-year storm event, and Council's stormwater engineers are providing expert advice on the assessment of the application. Additional conditions will be considered if there is a risk of larger impervious surfaces being used on the lots than the design was based on.

- What about the stability of the soil of that slope? There is more peat in that area.

The Applicants have provided a Geotech report from a reputable firm in Christchurch. Council have also obtained advice from an independent Geotech engineer on that report, and as a result Council has asked the applicant for more information about the geotechnical recommendations.

- Can the type of plants that can and cannot be planted be conditioned in order that if there is a storm event, we have the right plants for storage and for a holding capacity in those grassed areas?

The stormwater system will be all piped in several places to Endeavour Stream. Filtered treatment systems will be installed within the roads. There will also be restrictions on type of roof materials. All these methods are to mitigate the effects on water quality.

- Will there be any conditions about restricting cats near Victoria Domain?

There is currently no central government-imposed government Act around cat management. It cannot be enforced if there is no Act in place, and any condition if imposed would be very difficult to monitor and enforce. A predator fence along the domain boundary may instead be required if it is found necessary to protect the wildlife in the Domain.

- In terms of infrastructure have we got enough water to service this entire subdivision, as well as wastewater and electricity?

Yes, the service providers have confirmed there is sufficient capacity to serve the development.

Ian Sutherland exited the meeting at 2.00 pm.

4. Future of the Powerhouse Reserve Update (Nicola Neilson, Marlborough District Council)

- The presentation on the above topic is attached as Appendix B.
- The Reserve is owned by Council and managed by Picton Seaport Trust, a not-for-profit community group.

Questions/Answers

- Why do you think the Men's Shed, and the movie projectors, have been moved on?

They were going to restore an old lighthouse, mounted on the corner of the Trust Grounds, so it would be a nice sight when people came into town.

The lighthouse has been returned to the Naval people. Some of this happened before Nicci got involved so she cannot speak to that.

- The movie projectors, about 20 of them, have all been moved on?

The movie projectors and equipment have been returned to where they came from, to a man who owns the cinema in Invercargill.

- The idea was to turn Perano House into an old-time movie theatre; to build the movie theatre under Perano House and put the Perano House storey on the first floor. So, the quote of a quarter million dollars was to bring the piece of Perano House up to be fit for use.

Renovations for a movie theatre were estimated to be approximately 1 million dollars, so it was an untenable economic proposal. As it was to be a public building it had to meet all earthquake, safety and fire safety codes, etc. The building was too tall to ship it out of Picton anywhere else. It was unviable economically. Other options to re-use it, including relocation, were explored but were not viable.

5. Queen Charlotte College Update (Betty Whyte, Queen Charlotte College)

- Ms Whyte thanked the group for inviting her. The presentation on the above topic is attached as Appendix C.
- Ms Whyte produced some background information about the college, that it is for Years 7-13, and is a co-ed college. The role is 400, which is the maximum role. The Ministry of Education are now going to try and make it a zoned school. The top role has been reached so there is no space for new students.
- 50 people are employed, including 30 teaching staff and 20 support staff.
- It was built in 1965.
- The college runs an Aquaculture Academy, which is now 20 years old, and the college have strong relationships with aquaculture in the community. The Ministry of Education are doing an Impact Report on it this year.
- The principal has a meeting set up with a professor from Palmerston North wanting to replicate a similar setup in another area.
- The college have a barge, a water reticulating system, where salmon eggs are grown into adult salmon, we have a line out in the Waikawa Marina. There is a mussel line in Shakespeare Bay for experimental testing, etc. Students can study it for three years, from year 11-13. They study mussels, salmon, boating, diving, etc.
- The college is currently working to set up a very large container shed for small houses for Kāinga Ora, with woodwork, metalwork, trades, etc. A house will be built underneath and then taken away when it is completed and the students will start on another one.
- One of the first challenges they had was having a qualified builder on-site, working all the time, who must technically be a teacher. They have now found someone.
- Cuddons have put time into levelling the site underneath the shed. Cuddons provided the shed. Crafer and Crouch have done the excavations, to keep the prices as low as possible.
- The second challenge has been around roading. They have to get the house out somehow. Consents and permits will need to be in place for once the house is built getting it off the college land. We are waiting on approval for this.
- A major re-build is being done through the centre of the school, worth approximately \$20 million. It is not the most accessible of school grounds, they may have to go in via Hamden Street, which would cut off bus access. The bus access will have to be changed.
- RDP from Christchurch are doing the work. The designers were WSP. The contractors assigned are Brosnan. The whole rebuild is done from Christchurch, not locally.
- The works have been triggered by leaky buildings due to age and flat roofs, with leaking dating back to 2016.
- The process had to go through about three reviews, which were passed. There will be a Specialist Science/Tech Building, with the whole idea being to mix the hospitality with the science, a crossover to bring things together and open new teaching propositions.
- The finish date is estimated at April 2025.

Questions/Answers

- Are Adult Day Classes still being run and do they intend to be run in future?
They have not been run for a long time, but adults are welcome to enrol as students.
- Do you continue with testing of water quality as per the aquaculture industry?
Yes, they still run water testing in the wet labs.
- Space must be at a premium for teaching classes while the build is being undertaken. Where do you put the children and staff?
We opted out of using prefabricated buildings as classrooms in order to put as much funding into the rebuild as possible.
- Are you involving the students in the process of getting the resource consents for roading, etc?
Yes. Some of the contractors were happy to have the students shadow them during the build process also.
- What do you do with the dozen or so students shuffling into school at 9.05 am?
Coming back after Covid has been the hardest time in education for secondary schools, with the lack of focus, and a general apathy. Schools are getting behaviours they never used to see before, including vandalism, throughout the country.
Anxiety among teenagers was hugely developed during the Covid time.
- Does the school have a phone ban in place? Will it be compulsory?
We will probably be in the process of putting that in place. Parents have been canvassed on the issue. It will be compulsory if the Board approves it.
- Bosun Huntley commended the principal on what has been done over the years. The Aquaculture program has worked well.
- How is the school dealing with trans-gender toilet issues?
The school is generally accepting of the students. The toilets are a lot safer than they used to be with glass doors on either side of the corridors. The toilets are only the size of a cubicle. This is what you will meet anywhere in the world now. The issue is getting better, with students starting to accept it. The new build also has the same kind of toilets in it as well.

6. Future/Composition of Picton Regional Forum Meetings Update (Councillor Barbara Faulls, Marlborough District Council)

- Councillor Faulls led discussion around this topic. It is important that we respect volunteers as they are becoming scarcer. It is important that we represent the views of Picton and surrounding areas in the Marlborough Sounds adequately and efficiently and feedback from the community going both ways, to the Councillors, and back out to the community.
- Are the groups relevant? Is the forum, in its current state, relevant, or does it need to change?

- Dean Heiford pointed out from his perspective that usually after every Election all organisations are reviewed. The groups are refined. The Marlborough Landscape Group has ceased operating as there is not a lot left for them to do.
- Does this group still need to exist? Is it valuable to all those who come around the table? Does it need to be refined? How many meetings a year do we want to have?
- How can we communicate among the various groups?
- Currently all four councillors do not live in Picton physically, apart from Allanah Burgess. That is why they have a monthly meeting place at the Picton Library. People can bring in things to discuss on a one-on-one forum with the Councillors.
- Cllr Faulls is concerned that they hear about issues before they get blown out of control. Is there enough information in the newspapers and Council websites?
- There are often speakers from Council who do presentations at the meetings.
- The benefit of these meetings is that people in the community have a chance to air their voices. It would be good to have information extended to the community. Some information is duplicated at the Sounds Advisory Group meetings. That is largely a group for the Pelorus and Kenepuru and Outer Sounds areas. It would be good to have members from Havelock and areas come to Picton meetings to share ideas among the two groups. Costs could be prohibitive for some people who come from a long way to attend some meetings, due to the cost of water taxis. Otherwise, certain geographical groups could feel cut off and isolated.
- Are people aware that all committee meetings and Agendas and information are available on the Council website. People can also Zoom in to attend these meetings but cannot interact with them. It was noted that not everyone is computer-savvy.
- Havelock also have a very strong Smart and Connected group.
- Linda Thompson thinks these meetings are wonderful and useful.
- A point was raised that Council information is hard to find and hidden away at Picton Library. Cllr Faulls will discuss this with the library manager.

Questions/Answers

- What do people at these groups do with the information gained from these meetings?

The Karaka Point & Environs Residents Association group representative spoke saying they had decided they needed to have more knowledge of what is happening. Twice a year they present their roading issues to Council on what is happening in their area. They have a working relationship with Steve Murrin at Roads. It is useful to know the names of people in Council and the local area who to communicate with. It is forming connections and having conversations, which is good.
- The Minister from the Anglican Church spoke stating that word of mouth and making connections, knowing who does what, is valuable, and caring for the wellbeing of people, what projects are going on in the community. We can support issues or respond to needs. It would be good to have a plan in place and who to connect with for when there is a big event or earthquake.

The Minister passes on information from these meetings to other church leaders.

- A Christmas Day Lunch Event for lonely or isolated people was suggested and could be implemented in Picton.

The Minister will put this forward to other church leaders. The issue would be to find volunteers willing to sacrifice their own family time on Christmas Day to do this.

- Who determines which groups are in Picton Regional Forum? Are we sure we are reaching all the groups?

Clr Faulls will follow up with Dean Heiford around this. It doesn't need to become so big and unwieldy to become unfit for purpose.

- Beryl Bowers, from the Picton Historical Society, is very involved in the community, and she spreads her information and knowledge around the community. She thinks the current meetings are good and helpful. The every second month timeframe is good. Information is filtered via other members of her museum.
- From an iwi perspective, Te Ātiawa have good engagement with Council.
- It is good to get the correct and right information circulated, rather than false hearsay or gossip.
- Community Vehicle Trust. There are currently no MSVT vehicles in Havelock. It costs \$200 to get to Nelson for a hospital appointment. They provide door to door service, at a low cost, for less than a cost of taxi. There are two cars in Picton and two in Blenheim.

There is a new website up and running, linked to the Council website.

They are still doing the dialysis trips to Nelson. Not viable to have 2.00 pm appointments in Nelson. They need to be by 11.00 am or earlier, so volunteers are not driving home after 6.00 pm when it is cold and dark, so the patients, and volunteers, are not exhausted.

Thank you to the Rata Foundation and District Council for their donations and funding for a new car.

- Sometimes groups have the same problems. These problems can be shared and are impacting in similar ways in similar groups.

7. Actions from the previous meeting

	Action	Person Responsible
1.	Send out a list of group members for the Councillors to review. <i>Completed.</i>	Kirsty Baldwin
2.	Invite Cllr Burgess to these future meetings. <i>Completed.</i>	Kirsty Baldwin
3.	Councillor Faulls to invite Laura Skilton or Emma Speight from NZTA/Waka Kotahi to the next meeting. <i>Completed.</i>	Clr Faulls / Kirsty Baldwin
4.	Invite Katie Littlewood to speak on reef re-seeding issues. <i>Completed.</i>	Clr Faulls / Kirsty Baldwin
5.	Invite Henry Morris from PF Olsen Limited to speak at a future meeting. <i>Completed.</i>	Clr Faulls / Kirsty Baldwin

8. General Business

- **Parchment Worms**

- Don Miller asked about ocean water monitoring for parchment worms. Are those results posted in detail anywhere? Is there DNA testing to determine what creature they are coming from?

Cllr Faulls will follow up on this.

- **Picton Ferry Terminal**

- It would be helpful to have comment and plans from Port Marlborough, as soon as possible, whether the terminal has developments in place for people coming from Wellington and other places, with their own vessels, and have an appropriate place designated for pick up and set down. How will they filter this information to the public? It is important to have this available by Labour Weekend. Is the old place still useable?

Cllr Faulls to find out.

- **Picton Spring Clean**

- Envirohub run the Picton Spring Clean each year. Will Queen Charlotte College be able to help with a barge for this again this year, along with students to help out?

Linda Thompson to liaise with Betty Whyte about this.

- **Waikawa Bay Boating Club Sustainability Cleanup**

- The Club, and the Marina, have approached Climate Karanga, Marlborough and are planning on turning them both into a sustainable unit. It comes under the Yachting New Zealand standards and there is a process to go through. We are honoured to help with this. This will be a big project, but they are going to be made sustainable.

- **Steam Train for Cruise Ship Passengers**

- Will the coal steam train run again in Picton over the summer this year for the cruise ships? How do we justify that? When we have climate change? In keeping it environmentally friendly, being that it is run using coal?

Yes, it will operate on 35 days. They were meant to convert it to using clean coal. The trains are allowed to run, as they are part of the national transport corridor. Council does try to mitigate their effects and monitor them. There is nothing in our Regional Plan about pollution from a train to allow us to stop them.

- **Picton to Blenheim Bus**

- Discussion was had around having a bus to Picton on a Saturday. Is this viable? It would be a good idea making swimming and movies more accessible for families over weekends, as well as the Saturday market. It has proved its viability. It would be very well received, having a Saturday service. Is there funding for it?

Cllr Faulls to follow up on this.

- **Picton Intercity Bus**

- There are problems with people getting off the Intercity Bus in Picton with no signs directing people how to get to Bluebridge from the I-Site. Intercity staff need to inform people that when they get off the bus it is a 20-minute walk. There is also no signage for people coming off the Link Pathway into Picton. There is no facilitation for walking and biking around Picton.

Cllr Faulls will follow up on this with Destination Marlborough.

- Where will the Whale Trail cycle crossing be on Wairau Road coming down off the Elevation?

Cllr Faulls will follow up on this and invite someone from the Whale Trail group to attend the next Picton meeting.

- Has there been discussion for charging points for electric bikes in Picton?

There is an EV charging station at Z Petrol Station in Picton.

- **Picton Toilets**

- It was requested that some good quality toilet paper be installed in Picton toilets, which Dean Heiford will investigate.

- **Picton Library Sunshades**

- Graham Smail (Parks Officer, on behalf of Glenn Webster, the District Libraries Manager) is coordinating the possibility of providing an outside shaded area along the northwestern margin of the library building.

If budgets allow provision of other shaded public space/social area/s around the library building will be considered at the same time.

A site meeting to confirm details is scheduled in the next week and assuming such are confirmed, shade should be in place before years' end.

- **Picton Recycling**

- What is happening with recycling pickup in Picton?

There is now a new Refuse and Recycling manager in place, Mark Lucas, who commenced on 28 August 2023. The staff capacity for the truck pickups has increased to 11 drivers and seven runners and they feel more confident now they have a full complement of staff. Hopefully from here on in recycling will be done properly. The contract has been re-set to another company, not Metallic Sweeping. They are trying to maintain relationships with Metallic Sweeping.

9. Actions from the meeting

	Action	Person Responsible
1.	Email the group to vote on the proposal to have Betty Whyte, principal from Queen Charlotte College, become a regular member. <i>Pending.</i>	Kirsty Baldwin
2.	Follow up on the proposal for the Picton to Blenheim bus operating on a Saturday timetable. <i>Pending.</i>	Cllr Faulls
3.	Follow up with Destination Marlborough on having signs directing people how to get to Bluebridge from the Picton I-Site. <i>Pending.</i>	Cllr Faulls
4.	Follow up with Waka Kotahi about an update on the highway where the cones are on the Elevation concerning safety issues. <i>Pending.</i>	Cllr Faulls
5.	Invite representatives from the Whale Trail to speak at a Picton meeting re signage and cycle safety issues in Picton. <i>Completed.</i>	Kirsty Baldwin
6.	Invite Charlotte Campbell-Lamerton, Marlborough Roads, to the next meeting. <i>Pending.</i>	Cllr Faulls
7.	Meet with the Picton Library manager and discuss making easier access to find Council information about public meetings. <i>Pending.</i>	Cllr Faulls
8.	Further information is requested about ocean water monitoring and obtaining the results of this testing. <i>Pending.</i>	Cllr Faulls
9.	Look into obtaining some high-quality toilet paper to install in Picton public toilets. <i>Completed.</i>	Dean Heiford
10.	Follow up with Port Marlborough whether the ferry terminal development caters for people coming from Wellington and other destinations with their own vessels, whether there is an area set aside for pick up and set down safely? <i>Pending.</i>	Cllr Faulls

10. Future Speakers

- Picton Sewerage Update – Stephen Rooney.
- KiwiRail Update.
- Dublin Street Overbridge Traffic Management Plan Update (Laura Skilton / Emma Scape / Steve Murrin).
- Northwest Waikawa Marina Update (Gavin Beattie, Port Marlborough)
- Fishing Update (Eric Jorgensen, Sustainable Seas).
- Reef re-seeding issues Update (Kate Littlewood, Coastal Scientist).
- Marlborough Conservation Trust Update (James Wilson, Bryn Williams, Picton Dawn Chorus).
- Whale Trail Update (Nigel Muir, Chris Shaw, The Whale Trail).
- Forestry Update (Angela McKenzie, PF Olsen Limited).

- Mayor Taylor, One Year in the Role Update (Mayor Nadine Taylor, Marlborough District Council).

11. Proposed Meeting Dates for 2023

Picton Regional Forum

- 13 November 2023.

The meeting closed at 3.30 pm.

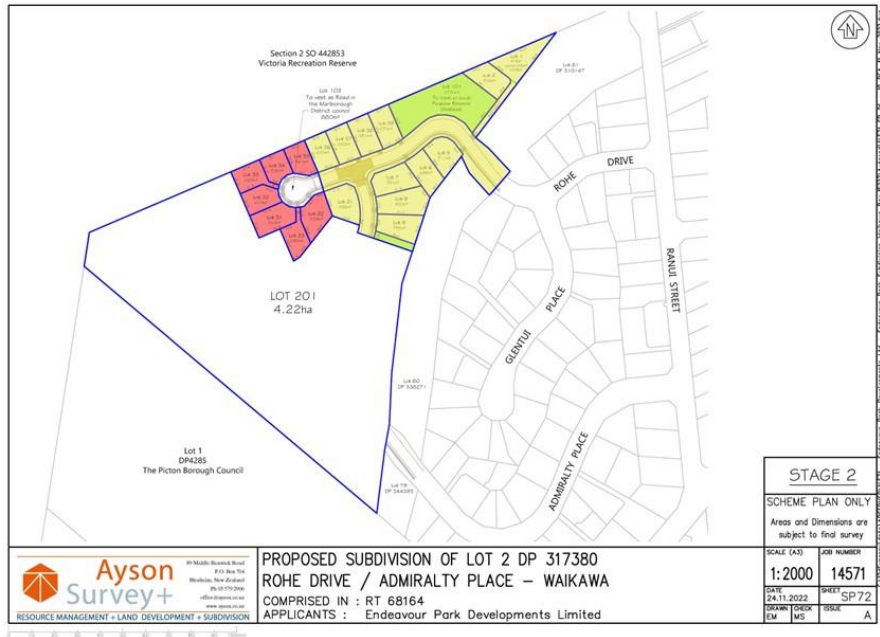
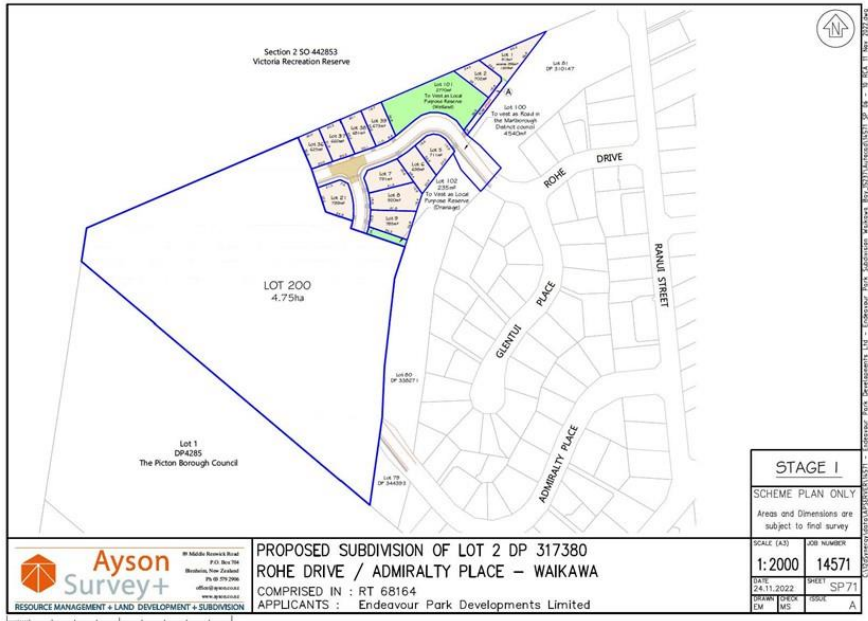
Appendix A – Rohe Drive Development Update

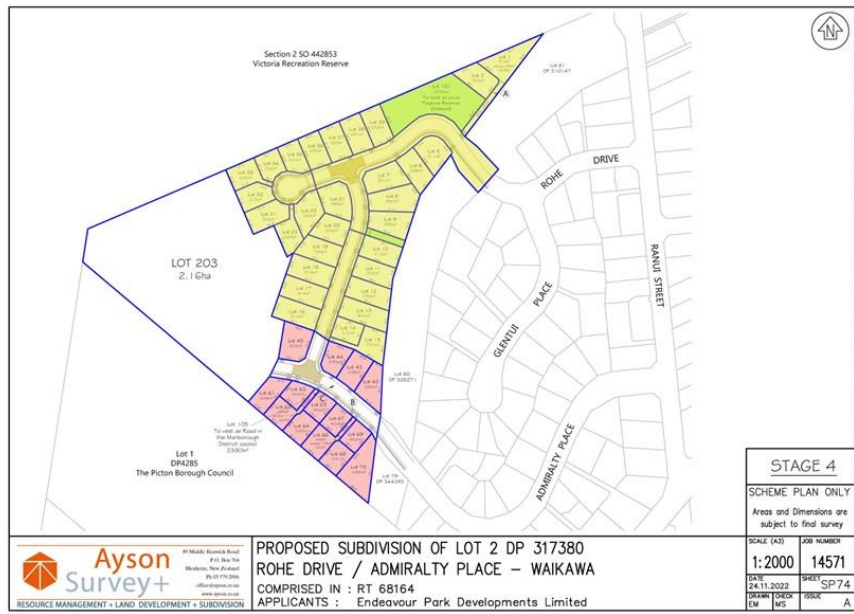
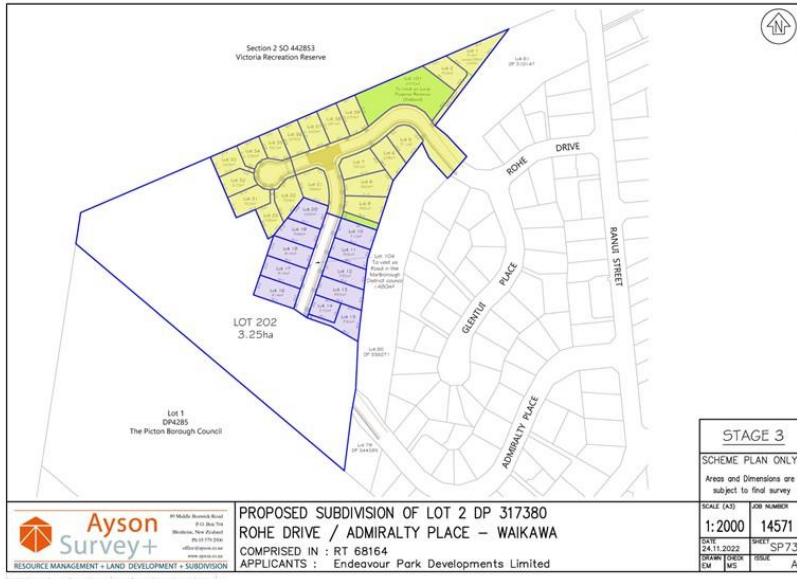
ENDEAVOUR PARK DEVELOPMENTS LIMITED SUBDIVISION APPLICATION – U230382

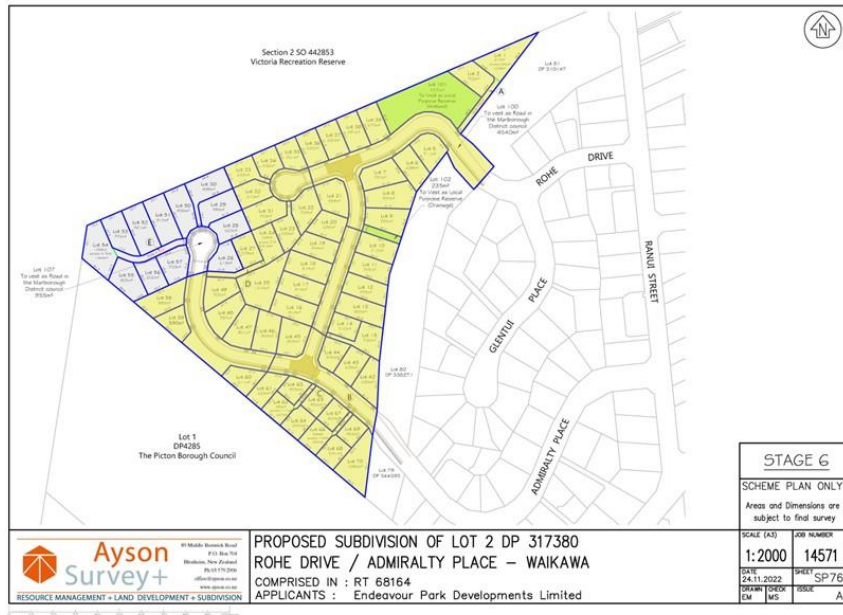
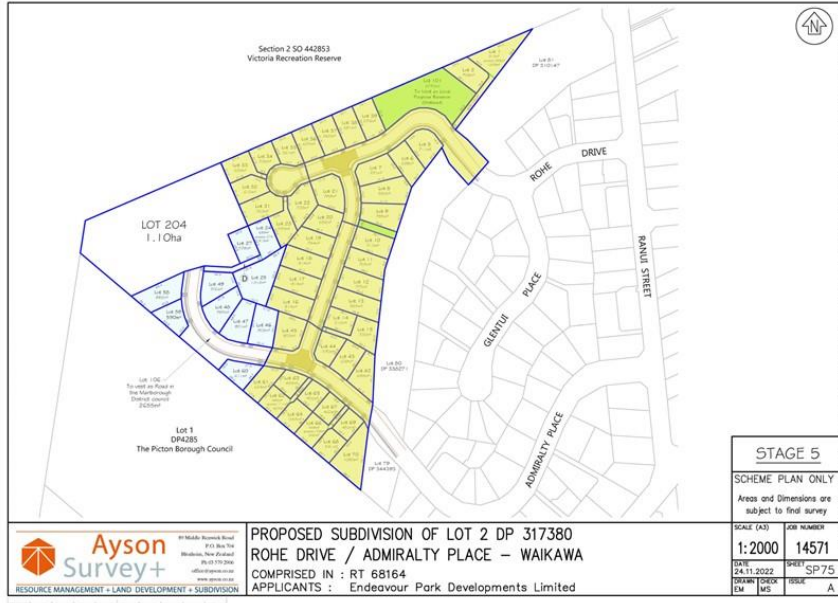


Features of the proposed development:

- 66 residential lots to be created over 6 stages (shown on the following plans).
- New roads are to be formed within the development site, and these will connect onto Rohe Drive and Admiralty Place.
- A wetland reserve is to be created (for the larger wetland off Rohe Drive).
- Connections for public access to be provided through to Endeavour Park (from the new road), and Victoria Domain (through the wetland reserve).
- All lots will be provided with full servicing.
- Stormwater - The applicants engineers have proposed that the Rohe Drive road crossing embankment be raised by 400mm. This will increase the storage capacity of the basin upstream of the embankment to provide additional attenuation for the stormwater discharged from this development. This is being proposed to mitigate the increase in peak stormwater runoff and avoid additional flood risks within the receiving network.







FURTHER INFORMATION SOUGHT

Council staff are very conscious of the flood risks to the Endeavour Stream system from this development, and on 10 July 2023 we requested further information from the applicants, including the following matters:

- Provide an engineering report on the suitability of Rohe Drive embankment to cater for the proposed additional stormwater impoundment.
- Upstream - Provide a flood map that shows the difference between the current maximum extent of water storage during a 100 year flood, compared to the projected extent of flooding from the additional stormwater from this development due to the increased height of the Rohe Drive bund.
- Downstream - Provide an engineering report regarding the potential adverse effects to downstream properties from the additional stormwater discharge during a 100 year flood event.

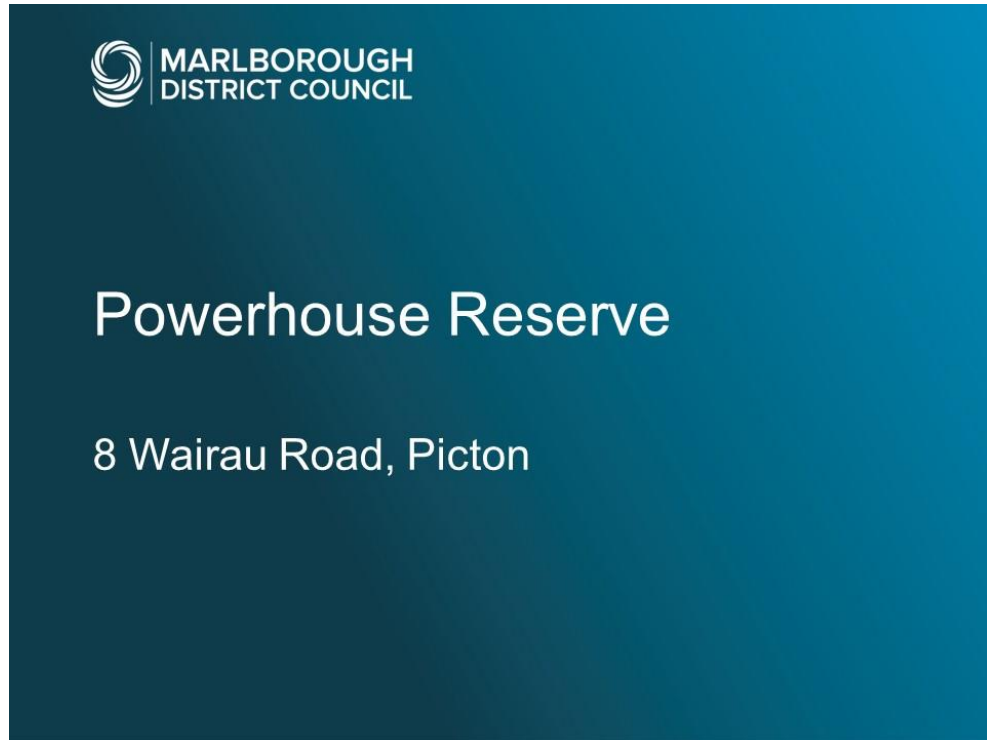
The applicants have requested additional time (to 8 September 2023) to provide this information due, and Council has agreed to this time extension. It is possible that further time extensions could be requested and approved.

Once the information has been provided, Council experts will review the information carefully to be satisfied with it before any decision on the application is reached. This will include an assessment on whether public or limited notification is needed or not.

Question time.

Ian Sutherland
Lead Senior Environmental Officer - MDC

Appendix B – Future of the Powerhouse Reserve Update

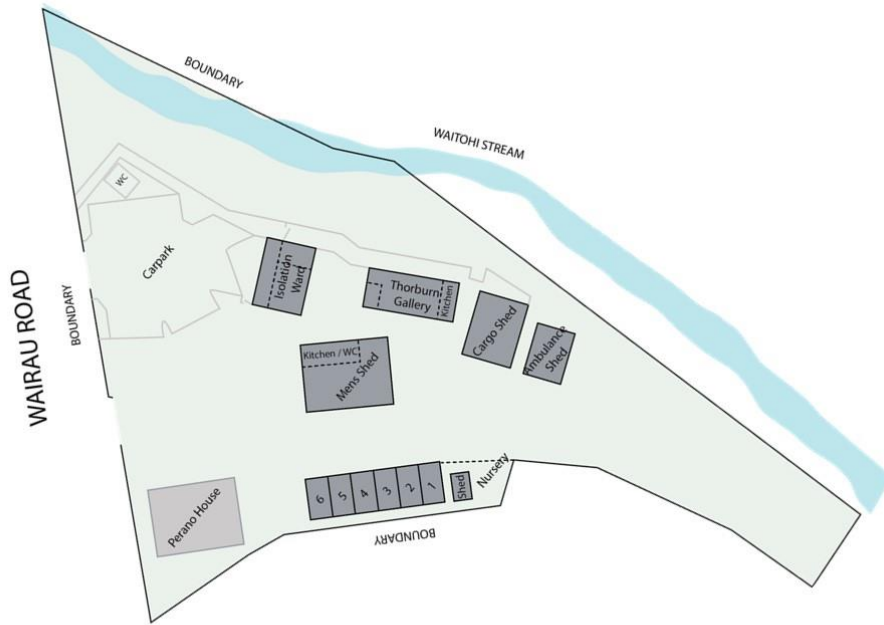




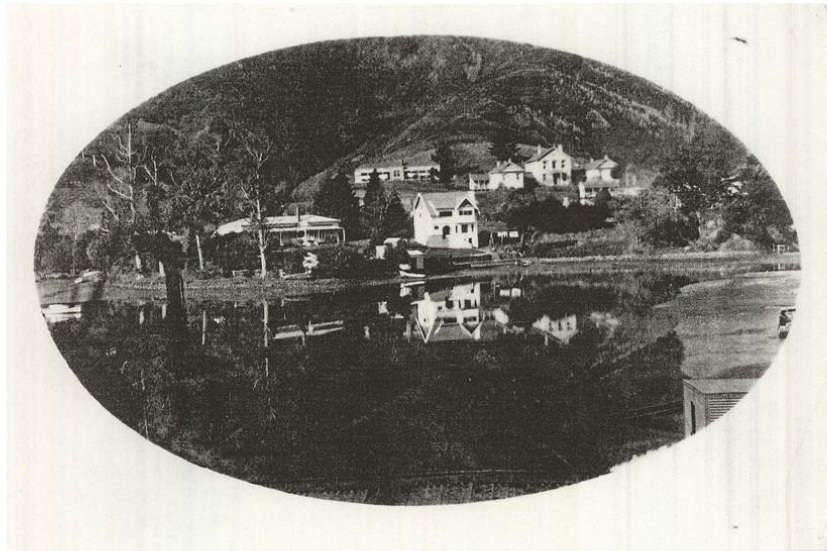
The Trust – CC40901



- **Established in 1994**
- **Original objective:** To develop and promote the concept of maritime theme working village in Picton, such development to be for the purpose of attracting tourists and visitors to the town of Picton, increasing the amenities available to the general public in the town of Picton and providing an educational environment for the general public in respect of maritime and port culture industry and history.
- **Current Members**



Perano House





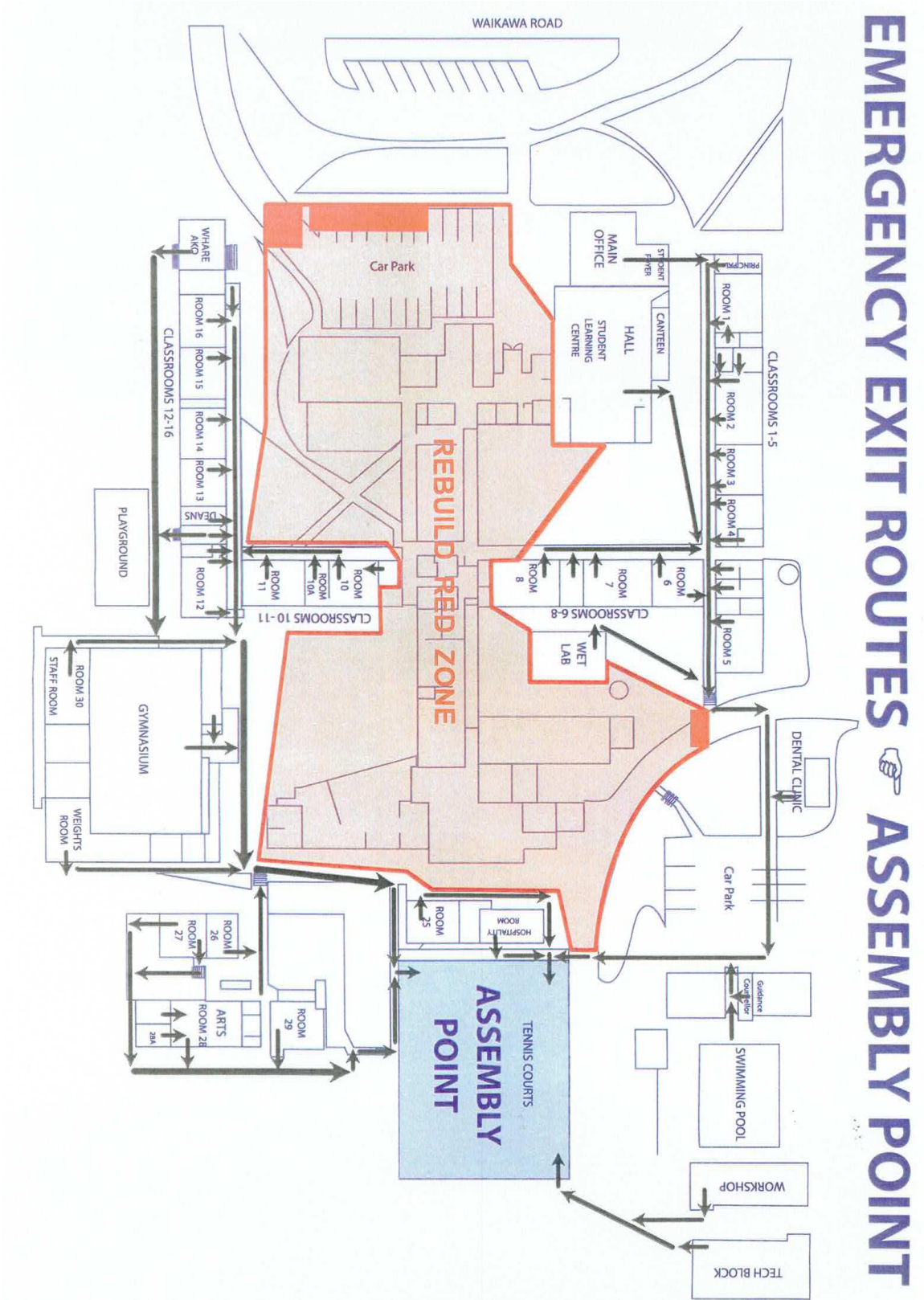
The Trust – Refresh

New Trust members

New direction:

- Objectives and Strategic Plan to be identified by new members.
- Not for profit.
- Home for environmental groups and artists.
- Registrations of interest.

Appendix C – Queen Charlotte College Update



EMERGENCY EXIT ROUTES ➔ **ASSEMBLY POINT**



3/10/2022, 10:40

IMG_4150.JPG

1/4

ADMIN & SLS BUILDING ENTRANCE

New Entrance to Admin



RECEPTION - ADMIN BUILDING

Front Office



JOINERY - RECEPTION BENCH
METECCA - MALIBU

JOINERY - RECEPTION BENCH
KYMIRA-A919

TECH & SCIENCE BUILDING



FOOD TECH - TECH & SCIENCE BUILDING



FLOOR/VINYL - SCIENCE & FOOD TECH
105 EMERALD - DARK WARM GREY & BAY

BENCHTOP - KITCHEN
STAINLESS STEEL

SPLASHBACK
SERATONE - MOONSHINE

JOINERY
HUELTECA - RAW BIRCHPLY

SCIENCE LAB - TECH & SCIENCE BUILDING



BENCHTOP - LABS
LABORATORY COMPACT LAMINATE - VAPOUR

WALL VINYL - SCIENCE LABS
PROTECTWALL - TISSE LIGHT GREY

FLOOR VINYL - SCIENCE & FOOD TECH
1055M11107 - 1200M W/0.04 GHE V.872

FLEXIBLE LEARNING AREA - TECH & SCIENCE BUILDING

looking towards entrance



The flexible learning area is the largest gathering space in the tech & science building. Features include:

- Two central portals acting as the 'pillars' wrapped in timber.
- Woven pattern in the Heradesign panels to indicate netting with features of blue to link to the waterways.
- Feature carpet the pattern through the key circulation area in the building. Enhancing wayfinding and connections between the two new buildings.