

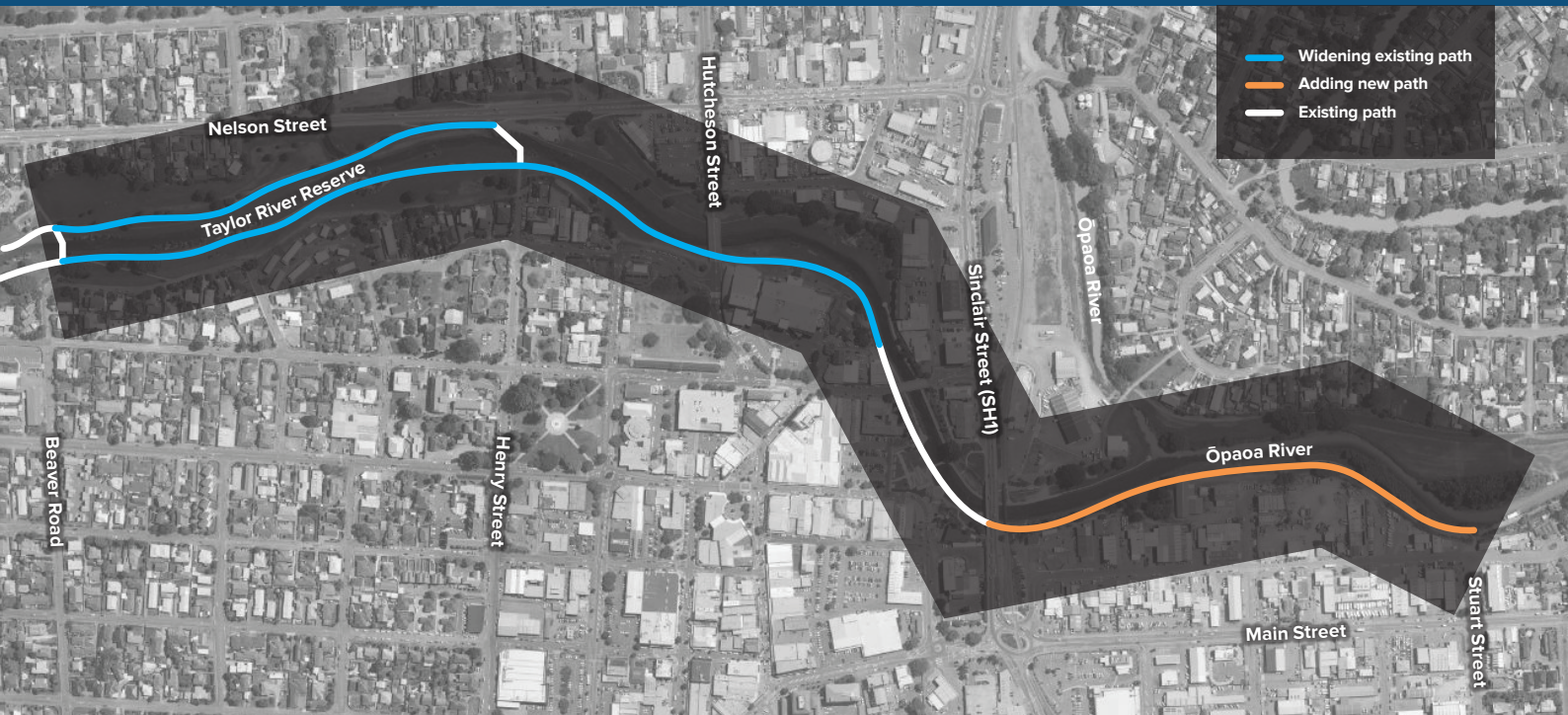
IMPORTANT

PARTIAL TRACK CLOSURE

TAYLOR RIVER PROJECT

March 2021 - July 2021

This is a staged project which means that not all areas of the pathway will be impacted at the same time. Signage will indicate areas of construction at any given time.



New concrete path will be constructed

This will improve connectivity between Sinclair Street (SH1) and Stuart Street



Increasing path width from 1.8 metres to 3 metres

This will make it easier to comfortably pass other users



Grading work will create a gentle slope from path to grass

This will improve drainage and make it easier for users to get on and off the paths

For your own safety we ask that you keep out of construction areas and use alternative routes.



In most cases it will be possible to use the pathway on the other side of the river, or to go around the construction area, on the grass



Dog owners are asked to use leads around construction areas, to keep themselves and their pets safe