



**MARLBOROUGH  
DISTRICT COUNCIL**



Wairau Diversion Fire Damage

**Information Update  
Assets & Services, Property and Community Facilities  
Department  
30 January 2024**

# Contents

<b>Marlborough Roads</b> .....	<b>1</b>
Local Road Asset Management Report – January 2024 .....	1
NOC Monthly Activities .....	3
Projects .....	4
Local Roads .....	8
Marlborough Road Activities .....	11
Stakeholder And Communications.....	12
Road Safety .....	13
<b>Marlborough Roads Recovery Team Update – December 2023</b> .....	<b>14</b>
Living safely .....	14
Environmental .....	15
Environmental Highlights / Low Lights .....	15
Design summary .....	17
Design Issues and Challenges .....	17
Construction Summary.....	17
Financial.....	17
Programme .....	19
Communications & Engagement .....	21
Progress Photos.....	22
<b>Rivers and Drainage Section – Activity Report</b> .....	<b>24</b>
Wairau River .....	24
Wairau Floodplain and Tributaries .....	25
Drainage.....	27
Floodway Reserves.....	29
Picton, Sounds and Awatere.....	29
Gravel Extraction.....	30
Quarries .....	30
<b>Services and Operations</b> .....	<b>31</b>
Education Report .....	34
<b>Parks and Open Spaces Activity Report</b> .....	<b>38</b>
Blenheim Parks .....	38
Renwick Parks .....	44
Awatere and Flaxbourne Parks.....	45
Picton Parks .....	45
Northern Marlborough/Sounds.....	48
District Public Conveniences .....	49
District Cemeteries.....	50
District Memorials.....	51
Walking and cycling .....	52

Playgrounds .....	52
Policy and planning .....	52
Rangers' Report .....	52
Road Safety Coordinator Update.....	55
Access & Mobility Forum.....	57
<b>Property and Community Facilities Projects Report.....</b>	<b>61</b>

# Local Road Asset Management Report – January 2024

(Information prepared by Amanda Smith)

R800-007-02

## General

The Christmas break was a quiet one for the Marlborough Roads team which meant that everyone got a well-earned break. The team are all back on board and excited to see what 2024 brings.

The Marlborough Roads Joint Venture team are back out on the roads with the Fulton Hogan chip sealing crew in Marlborough from 8 January. There will be a lot more road works around the region over the next three months as we make some good progress on the resealing programme.

The draft 2024-27 Activity Management Plan was submitted to NZTA for consideration of our budget request on 8 December.

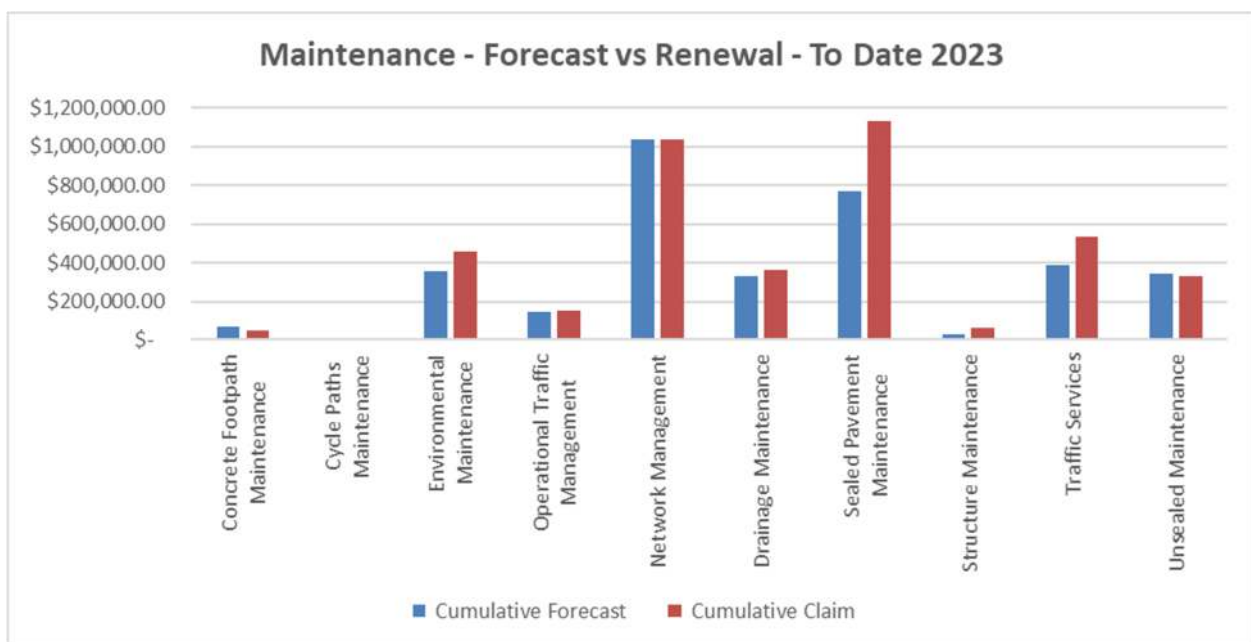
Work continues on the Regional Land Transport Plan as an update and to separate Marlborough from the Tasman/Nelson RLTP. Laura Skelton, Principal Transport Planner, will present an update on this work at the workshop in January.

## Financial Commentary

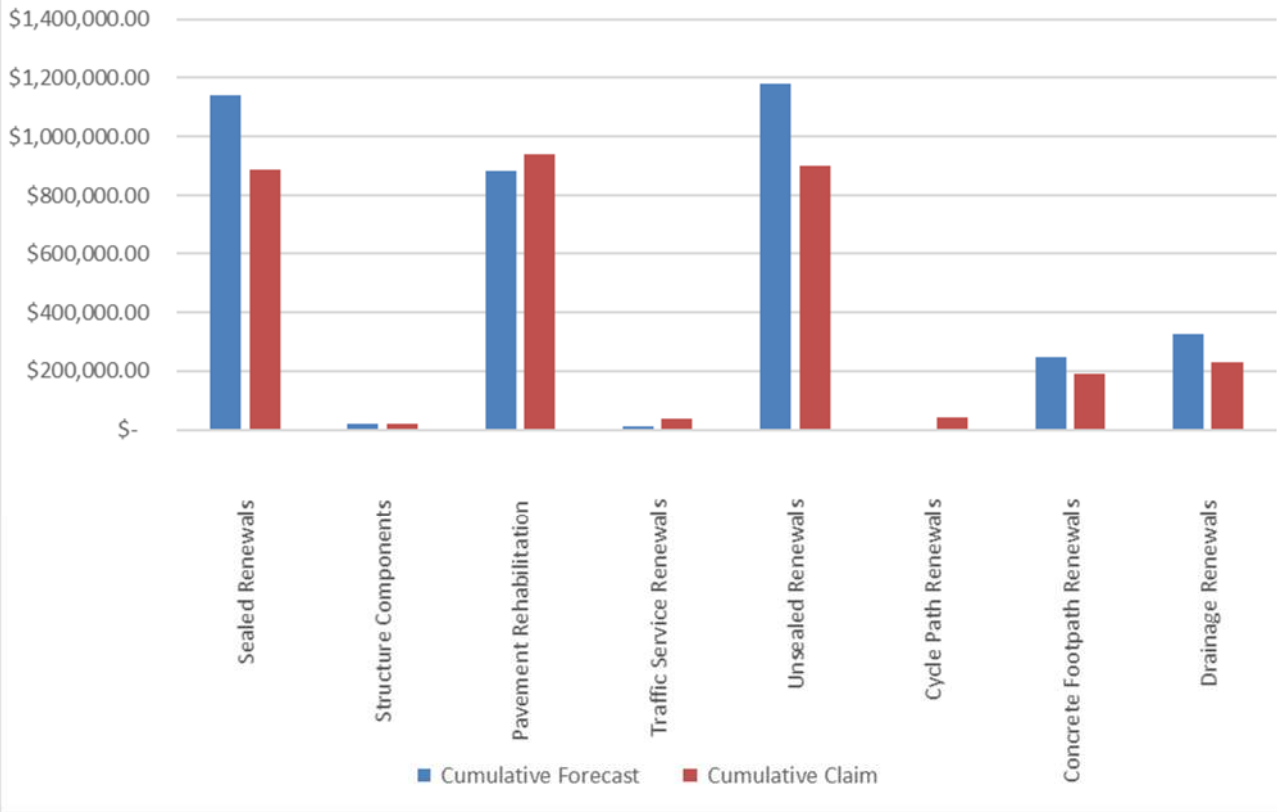
Achievement of November’s programme was 44%. The goal is for 80% achievement. There is a 20% allowance is for reactive works that come up during the month which cannot be programmed. For November, 89% of dispatches completed were reactive works e.g., potholes, detritus, blocked sumps, replace edgemarkers etc. These reactive works are generally covered within the lump sum maintenance costs.

The following graphs show the forecast budgets against the completed works for the Maintenance, Capital and Unsubsidised work for the financial year to date.

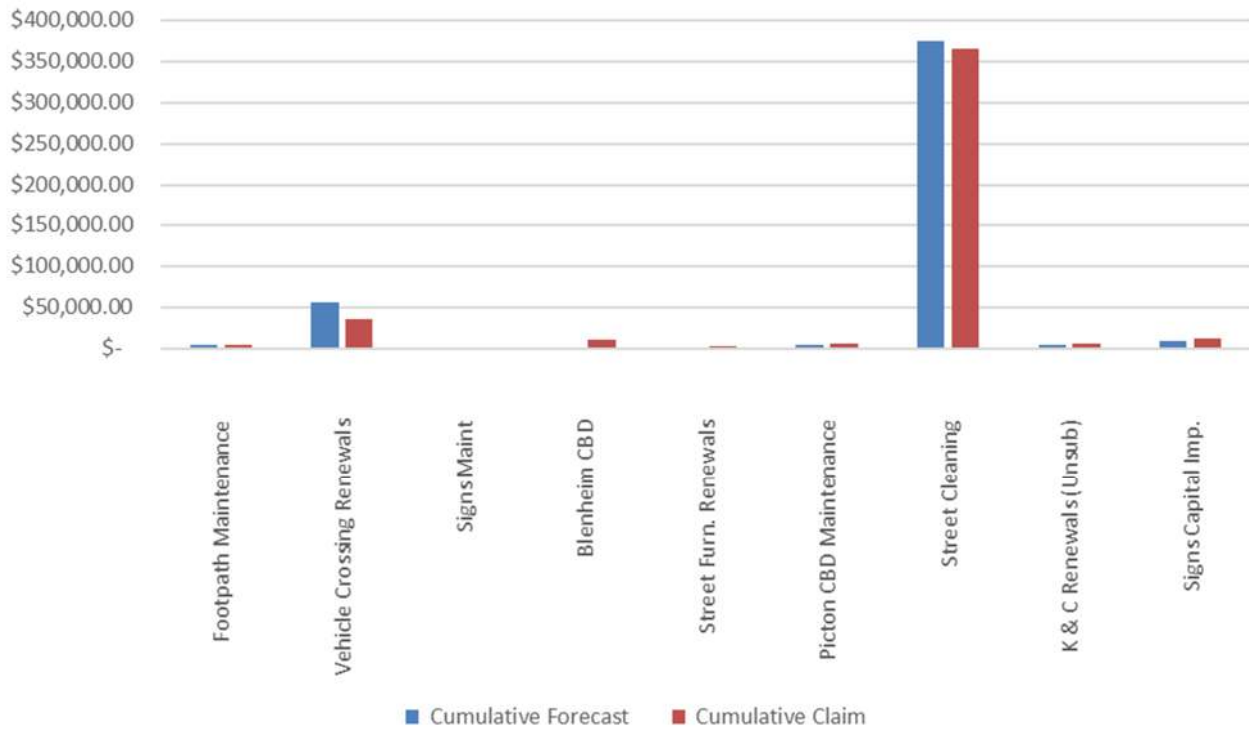
For the financial year to date, there has been \$9,967 spent on Jetty Repairs and Maintenance.



### Capital - Forecast vs Renewal - To Date 2023



### Unsubsidised - Forecast vs Renewal - To Date 2023



# NOC Monthly Activities

## Summary from Contract Manager

Renewals continue to progress well, with all this asphalt surfacing (TAC) sites completed and the slurry team finished all the FWP sites. The lead up to Christmas was busy with state highways sealing and a majority of rehabs programmed before the break.

For pre-seal repairs, 91% for state highways and 75% for Local Roads have been completed as of November 2023. Several area wide pavement treatments (AWPT) were completed in November. Others currently being priced for a post-Christmas delivery.

The state highway drainage renewals are also proceeding well, with 92% completed of this year's programme.

The unsealed network continues to be a focus with three times more grading undertaken in November, than in the month prior. Tourist roads were especially important as we headed towards Christmas.

The New Zealand Guide to Temporary Traffic Management (NZGTTM) continues to gather momentum with a project manager appointed and formal meetings held with those involved on 12-13 December.

The downward trend in customer enquiries continues, with 73 in November 2023, down from 113 in November 2022. The biggest decreases are in the drainage, pothole and signs categories. This is positive reinforcement for the team that their hard work is paying off.

It was great to see the good work done by the team for their mussel filtration system being showcased on TVNZ One News this month. It was not only having the idea, but the licence and confidence to take it to the next level, implement, monitor and see the results followed through.

## Operations Report (November Report)

### Summary from Operations Manager

#### Monthly Summary

November was a similar month to October in terms of volume of work, which is good momentum leading towards the end of quarter two. Resurfacing was a planned quiet month to ensure the curing period is met between heavy maintenance patches and resealing.

#### Monthly Programme Summary

The focus this month is to confirm the programme and have lump sum and renewal activities approved in RAMM, to the end of June 2024.

The quarter two (October-December) focus on;

- Footpath renewals
- Crack and first coat sealing
- Drainage inspections in French Pass and Port Underwood
- Pre reseal repairs (stabilising and digouts) and completing these before the third establishment of the reseal season for January
- Low cost low risk works
- Area wide pavement treatments/rehabilitation of roads
- Reseals
- TAC programme
- Grading of tourist roads

## Overview of Lump Sum Maintenance

In November there was again a high number of pothole works completed.

Other areas with a high amount of works in the month;

- More than 461,902m<sup>2</sup> of grading of unsealed roads has been undertaken (increased by three times on the previous month).
- 4105m<sup>2</sup> of second coat seals
- 2500m<sup>2</sup> of stabs on state highways

## Renewal/Measure and Value/Achievement Length Summary

### Summary from Renewals Manager

- November was a reasonably quiet month for the Renewals Season for chip sealing.
- All the TAC sites have been completed and used 100% of the respective budget.
- The slurry crew have completed 15 out of 15 agreed forward work programme (FWP) sites, and programmed March establishment for the rut filling programme.
- Fulton Hogan Sealing crew will be on the network in December state highway sealing.
- Drive overs with the client for pre-seal approval is in progress with SH1 the only section left to approve.
- On Rehabilitation sites, three out of seven are completed with another three planned to seal before Christmas.
- The whole surface rejuvenation programme, along with two rehabilitation sites, 39 seal sites and one TAC site have been removed from the programme due to not having the budget available for Local Roads. (Some of the removed sites are on the Kenepuru Road, these have been replaced with other local road sites).

## Projects

### State Highways

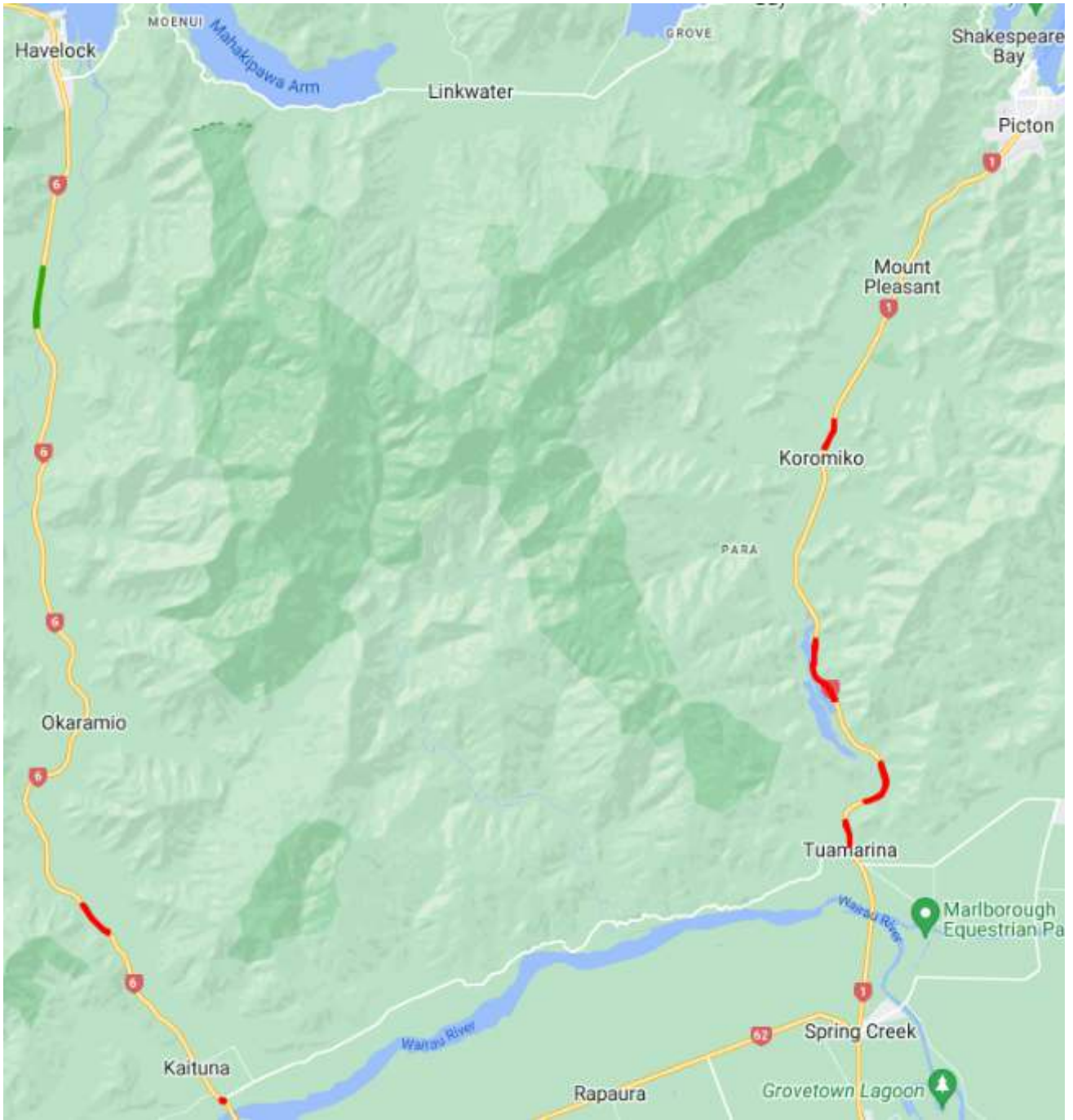
#### Renewals

The Fulton Hogan chipsealing crew have arrived in the region and have hit the ground running.

The following plans show the State Highway Renewal Sites for the 2023/24 year.









### **iReX – across both State Highway and Local Roads**

Following the government’s announcement around the iReX project prior to Christmas, regular meetings amongst the teams have continued. Traffic management remains in place and continues to be managed. We are waiting to see what happens next with the project whilst still trying to minimise disruption for Picton residents.

### **Picton Elevation Resilience Project**

Installation of five drains was carried out prior to Christmas through directional drilling. Each drain is helping to remove ground water from underneath the carriageway, some with better flows than others.

The drill team are back on site in mid January and will be completing the installation of two further drains and reinstalling two in better locations with the hopes of collecting more ground water.

This section of road has held up well over the Christmas period and the drains appear to be doing what they are supposed to and removing the ground water from the road surface.

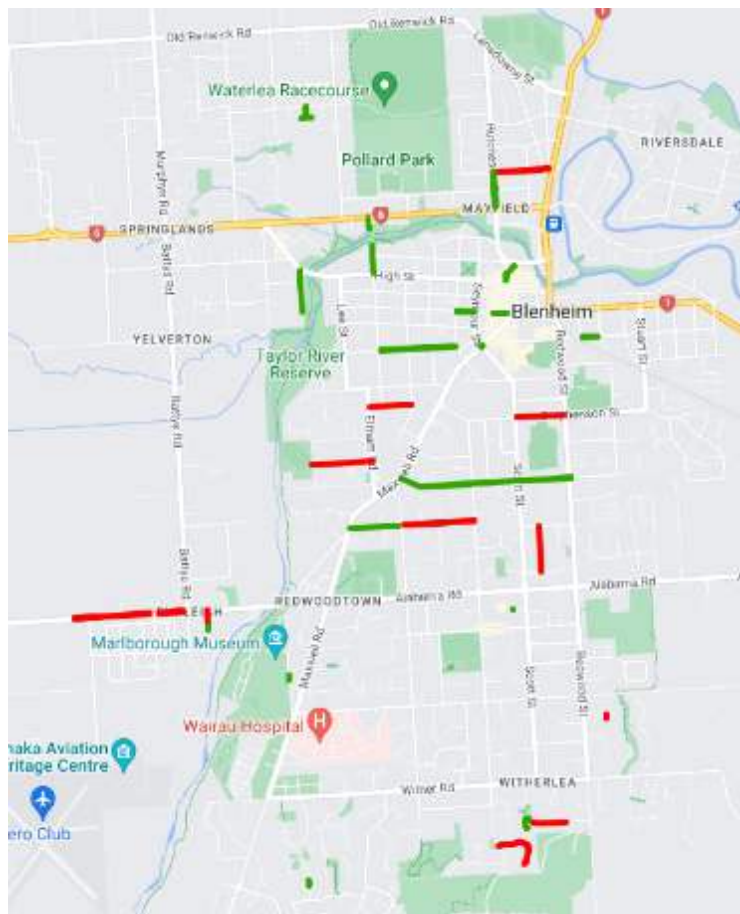
If the directionally drilled drains are more effective than we had hoped we may be able to bring the programme for this work forward. NZTA Waka Kotahi are pushing hard to get this road back open to the 100km/hr speed limit as safely and as soon as possible.

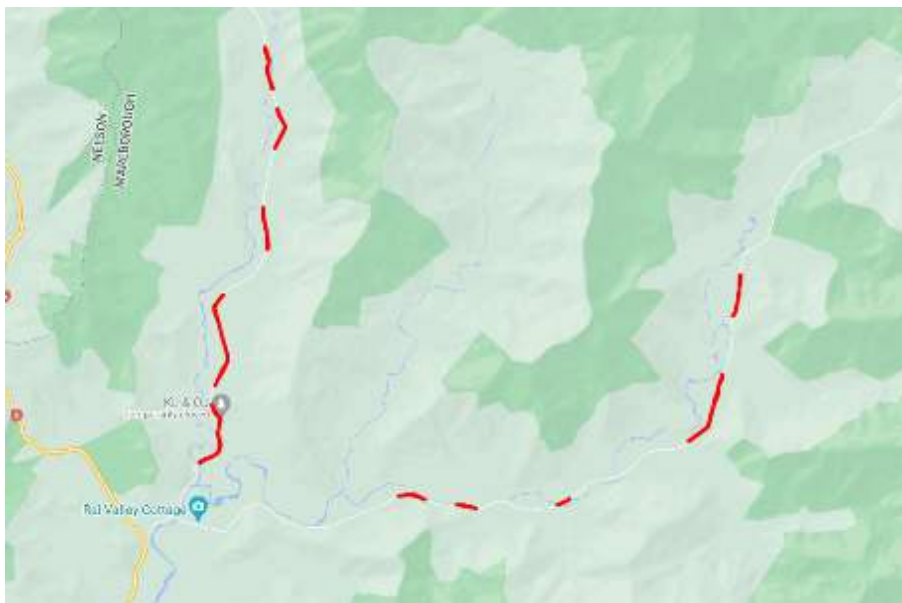
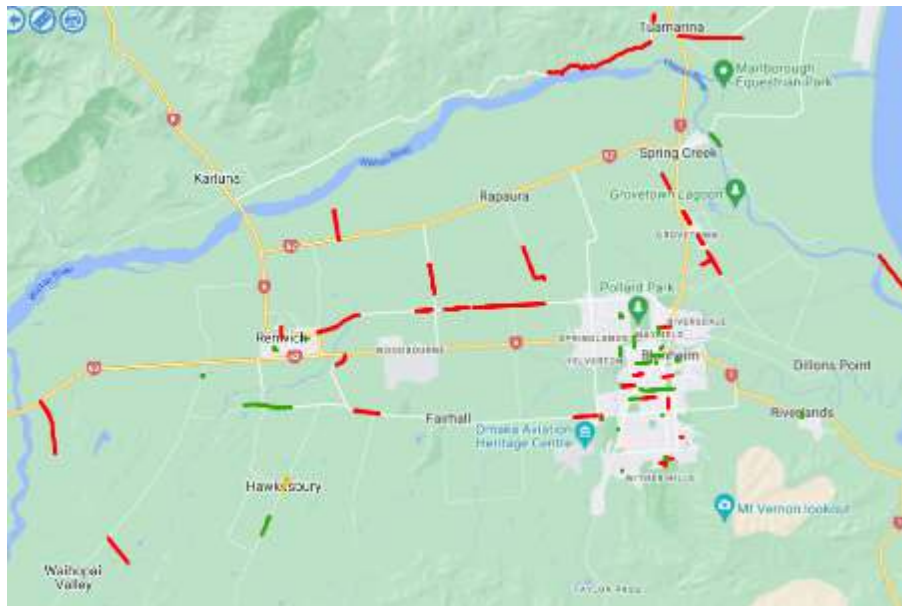
## **Local Roads**

### **Renewals**

The Fulton Hogan chipsealing crew have arrived in the region and have hit the ground running.

The following plans show the Local Road Renewal Sites for the 2023/24 year.







## Footpaths

Work on the full network assessment and condition rating of the Marlborough District's footpaths continues and should be completed by 19 January 2024.

The rating will capture the current condition of the footpaths and will give each footpath an overall ranking. The footpaths have also been given a level of priority dependant on their location e.g. schools, hospitals, CBD, elderly housing etc.

This information will give us the ability to be able to prioritise each footpath into a forward works programme that can be planned multiple years in advance. This will also give utility operators the opportunity to be able to plan their works prior to footpath renewals being completed.

The intention is to have a 3-year FWP in place by the beginning of the 2024/25 financial year.

## Macrons on signage



Macrons have now been installed on all but five Māori road name signs which formed part of a 2021 LTP request by Rangitane for 17 Māori road names to include macrons. The five remaining signs will be completed by the cyclic crews when they are in the area completing work.

## Marlborough Road Activities

### Activity Management Plan (AMP) 2024-2027

The draft AMP was submitted to NZTA Waka Kotahi on 8 December 2023, with the conservative budget that had been presented to Council.

Further details around the likelihood of funding approval are likely to start from March 2024.

### Whale Trail

Work continues with NZTA Waka Kotahi on the design of the section from Elevation to Picton. This section is going to cost considerably more than initially budgeted so approval for these additional costs is being sought.

### Walking and Cycling Strategy

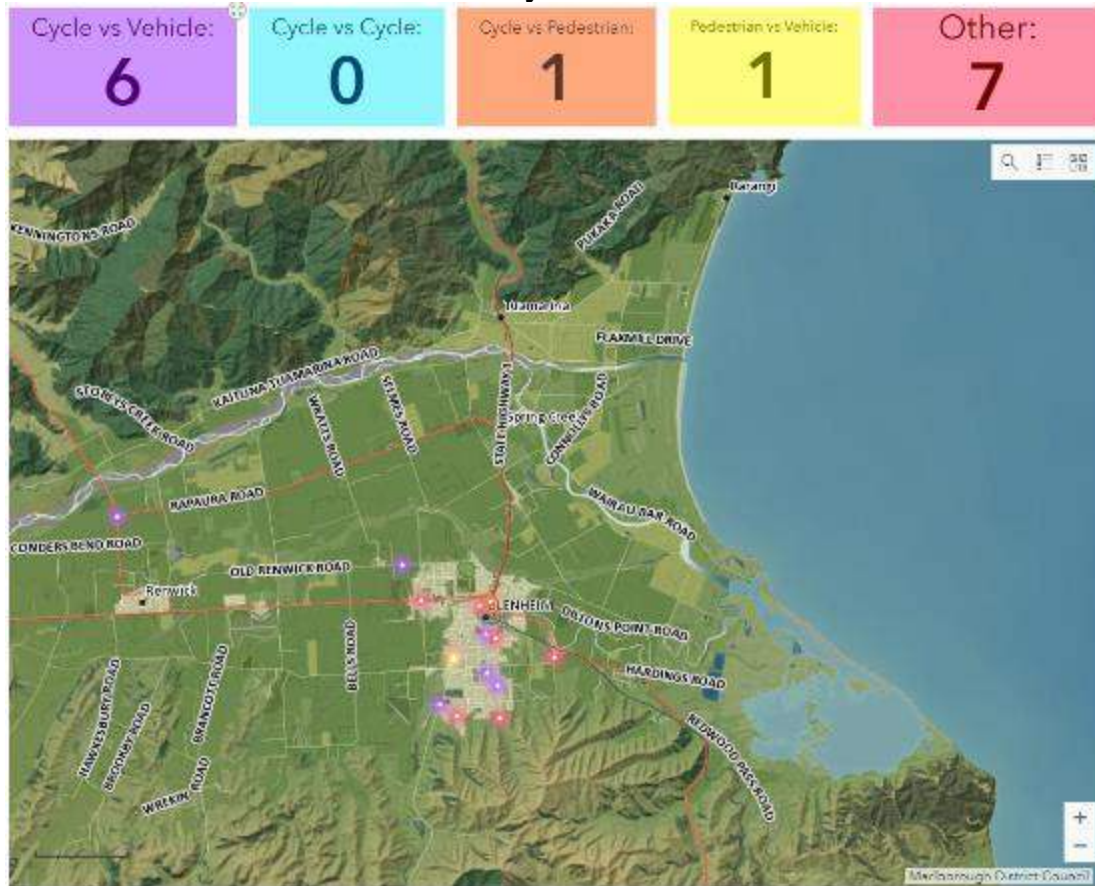
Currently underway along with the Walking and Cycling Strategy that will be reviewed and tweaked in light of the new GPS draft and press statements from the new coalition:

- Improvements to Bus Shelters on Waikawa Road
- School Streets assessments and working with the Police, MDC Road Safety Officer & NZTA on trials to be proposed to MDC
- New commuter cycle path to connect Taylor River Reserve to southern fringes
- Slower Speeds around schools review – Kea Crossings currently being operated in speeds exceeding 30KPH
- Henry Street connection between Taylor River Reserve and Seymour Square
- Working with Economic Development team on several different projects for cycling and healthy streets
- Seeking alternative solutions for cost effective way finding in urban environments

## Regional Land Transport Plan (RLTP)

Work continues on the RLTP as an update and to separate Marlborough from the existing Top of the South RLTP. Laura Skelton, Principal Transport Planner, will present an update on this work at a workshop on 30 January 2024.

### Bike/Walk Crash and Near Miss Dashboard – July 2023 to October 2023



## Stakeholder And Communications

### Summary from Communications Manager - November

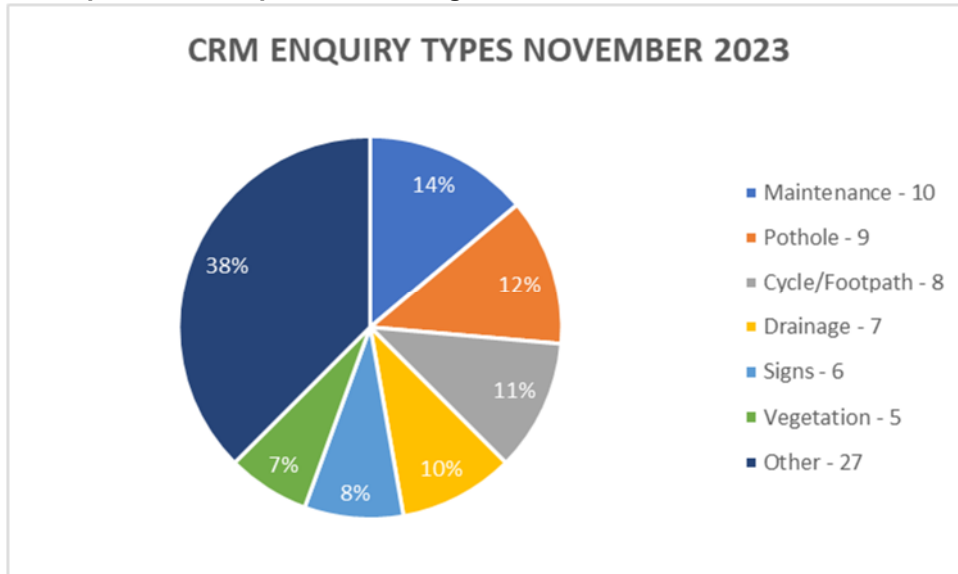
The total number of customer enquiries in November was 72, an increase on the previous month with 35 CRMS in October 2023. Enquiries were down when compared with November 2022 with 113 CRMS, that were not related to the weather event. Of the 72 CRMs, 89% were for local roads and 11% for State Highways, with 100% resolved.

The highest number of enquiries were for maintenance with ten CRMS in November 2023. This is an increase on the previous year, with five maintenance enquiries in November 2022.

The biggest decrease in enquiries was in the drainage category with seven CRMS this month, compared to 14 in 2022. This can be attributed to the teams focus on drainage works made over the last quarter, along with lower rainfall.

The pothole and signs categories also had significant decreases, both down 40% on the previous year. Again, these decreases can be attributed to the work of the crews across the network and for potholes, the lower rainfall this year.

Please note, descriptions are as per CRMS categories.



There was one complaint received in November regarding sub-contractor repairs on Jefferies Road.

There was one compliment received in October for the speed at which works were undertaken on Waihopai Valley Road.

Seven customer call backs were completed in November, representing 10% of all CRMS. The average score was 4.85 (with one being very poor and 5 being very good) for the level of service received by the MRJV Team. Any items of concern have been forwarded to the relevant parties.

There were seven pieces of media published relating to the MRJV NOC in November 2023. The highlight of which was TVNZ One News coverage of the team's innovative mussel filtration system, airing on Monday 20 November at 6.10pm. The story included an interview of Steve Murrin and Simon Smith of Marlborough Roads and Phil Leslie of Leslie Brothers Contracting. TVNZ also published the story on their website with links to the TVNZ report.

The other items include two stories on crashes in the region and works on SH63 being postponed in Stuff. MRJV was also mentioned in a letter to the editor and txt talk, both in the Blenheim Sun.

There were five letterbox drops to a total of 230 residents and two Antenno and Alerts sent in November to notify residents of upcoming works.

Multiple communication and engagement planning meetings for the iRex project were attended in November. A pre-harvest meeting was held with the Freight Industry and NZ Police attended the November staff meeting.

#### Future Month Focus

- Renewals season notifications
- Planning for SH1 Weld Pass communication in Jan/Feb
- Pre-Harvest stakeholder engagement

## Road Safety

#### Local Road Crash Summary

The Contract has had two DSI crashes on the Local Road network recorded in CAS for November 2023.



## **Marlborough Roads Recovery Team Update – December 2023**

---

In the physical works space the month was mostly focussed on ensuring sites were either completed prior to the Christmas break or constructed and closed out in a way that ensured a safe environment for public and road users. Closedown procedures and checklists were set up and used across our sites.

A big milestone for the team was the construction procurement approval of our site at Cullen Point. This is a site of significant importance to the client which has been challenging to close out due to temporary works challenges and the requirement for Queen Charlotte Drive to remain open as much as possible. The team has put in great efforts to ensure the right temporary works designs are being proposed by challenging the contractor on both design philosophy and cost. Even though we managed to get to a suitable solution, the site had yet to be procured above original budget estimates due to several reasons. MRRT will go through a lessons learned exercise to ensure these will be implemented on future sites.

MDC have given us the approval to proceed with the construction of 8 complex phase 3 sites which were deemed of higher importance. Cost for these sites will be covered by the current phase 2 funding, designs for these sites were already progressed and will become available at different times from February '24 through to May '24.

These 8 sites will provide some continuity for the construction team in 2024 although we still suggest the approval for the construction of minor and simple works in the Sounds area to commence earlier in 2024 to ensure our team can remain. We will have a clearer understanding of the scope in the Sounds area towards the end of January based on drive overs.

In December we have had our first meeting with Marlborough Roads truck roll-over prevention work group existing out of multiple members from the joint venture and client. This meeting was set up as an introduction and to establish a direction. The work group is to reconvene again in January.

### **People and Culture**

Tim McCombe will be moving back to the Marlborough Fulton Hogan team as of January 2024, the operations management role from that date will be filled by Adam Hale who has been the zone manager for the Kenepuru and Queen Charlotte Drive zones recently and has been working alongside Tim from nearly the start of the Recovery Team. A handover has begun and Tim has been made available for the first few months in 2024 for any assistance.

Since most of the work is shifting slowly towards the Sounds, the Org chart for Recovery has been reviewed and new zone manager and engineers have been assigned.

With the new level of service for the Sounds area requiring more diverse design hub input, we are currently recruiting for a geometrics designer into the design hub team, more details on this in the design progress section of this report.

## **Living safely**

### **Subcontractors**

In the month of December, we completed two inspections which maintained our subcontractor inspection schedule for Marlborough Roads Recovery. The inspection showed a high level of risk management with suitable controls implemented to manage relevant risks. We provided eighteen inductions to new workers as required. We also reviewed the level of risk control and worker competency was appropriate for the works being undertaken.

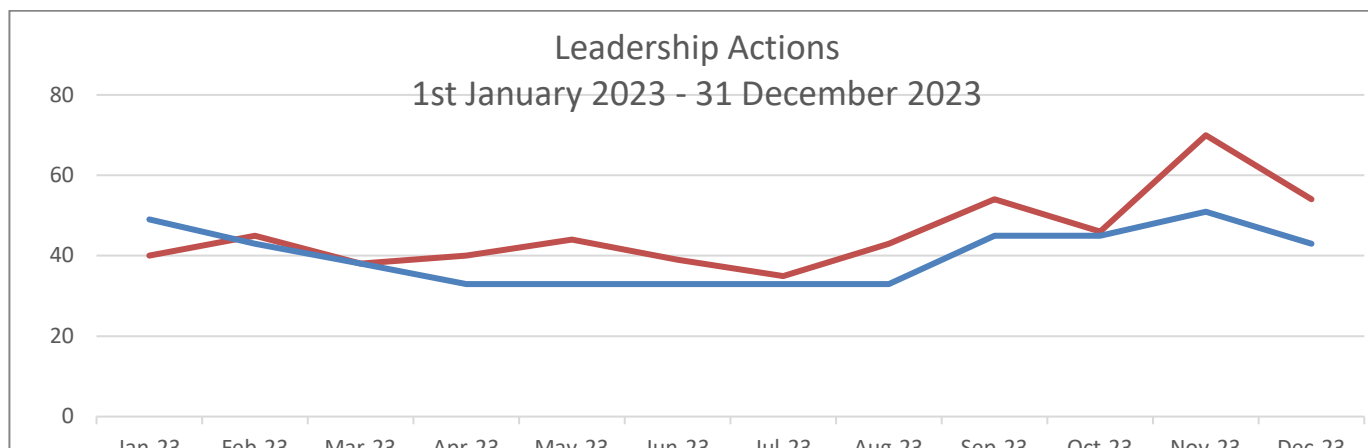
### **Injuries and Incidents**

During the month of December, we had one incident recorded.

## Leadership Safety Actions

In December, we had 54 leadership safety actions logged, with a target of 43. Leadership Actions are a good way of demonstrating the dedication and commitment our team has towards the Health, Safety, Quality and Environmental considerations for workers in the field. This is a positive reflection of a good safety culture within the Marlborough Roads Recovery team.

The **Blue** line indicates our target minimum LSA requirement for the month and fluctuates depending on the number of supervisors working in any given month. The **Orange** line indicates the achieved number of Leadership Safety Actions completed in each month.



## Environmental

### Consenting Progress

- The variation for completing the Titirangi Clean Fill expansion, and the retrospective consent package for the Limestone Slip were approved and applications are underway with WSP.
- The Waitata Bay rock / gravel extraction retrospective consent application has been submitted by WSP and further s92 requested from MDC responded to. Still awaiting landowner to complete the affected party approval form.
- Wilkes Resource Management are working on the retrospective consent application for the clean fill on Croisilles-French Pass Road at RP 29.6 alongside an approved volume from the farm operator for future filling should it be required, and a new application for clean filling at RP 13.3. Further information required by MDC has been submitted so we await draft conditions for these consents. Approval from DoC is required as well which could be causing a delay.
- Wilkes Resource Management are working on the consent application for the new stormwater discharge network to be installed at Akerbloms Road / Punga Cove.
- Wilkes Resource Management providing proposal to prepare the necessary consenting for the Torea Bay Boat Ramp.

### Environmental Highlights / Low Lights

- Highlights
  - Sites visited by the Environmental Advisor during November included the rock protection works with river diversions along Waikakaho Road and Onamalutu Road, ongoing repair sites at Momorangi and Aussie Bay on Queen Charlotte Drive, and the drilling works on Tepuia Heights Road.
  - River diversions being completed under the new Zonal Consents executed well with compliant notifications to MDC.
- Lowlights
  - No lowlights to report this month with all the consenting issues resolved.



**Drilling work occurring on Tepuia Heights Road**



**Diversion works ready for rock protection placement on Waikakaho Road**

# Design summary

## Design Issues and Challenges

### Phase 3 consultant procurement strategy

The consultant procurement strategy remains under review for the upcoming phase 3 works based on lessons learned from phase 2 and findings from the design drive overs through the Sounds. At time of writing the Kenepuru zone reviews are yet outstanding, although in the other zones only a few complex sites needing full consultant input have been found due to the new level of service in the area. There is an increase of simple sites, requiring minimal consultant input, and it has therefore been decided to second a geometrics designer into the design hub who can assist with development of simple designs and the interpretation of the level of service.

### Level of service

The future access study includes a reduced level of service outline for multiple corridors through the Marlborough Sounds. This mostly focusses on the road geometrics by allowing more one-lane sections or road sections with restrictions to be designed. The study provides a guide only and includes insufficient information for the design hub and consultant to develop designs. The assurance team is currently working through a more detailed level of service guide which we can design to. This document will be required prior to any phase 3 design work being able to commence.

## Construction Summary

### Progress Update

Overall outstanding Priority 1 faults down to 80 or 16% remaining to complete. These completed sites are mostly minor works of which a large portion has been inspection by BAU inspectors for satisfactory close out. A lot of work done this month on larger fix sites which are not 100% ie Duncan Bay, Croisillies French Pass sites that are 90%. Now with the sites being complex design sites to complete the total fault numbers outstanding will be slower to reduce.

### Construction Issues and Challenges

Increased logging truck traffic on QCD is still creating issues holding pavements and new surfacing but being prepared for is the key.

Increased summer temperatures also affecting surfacing on QCD with bleeding on a number of sites, not helped by the increased heavy vehicle movements. This is both a BAU and Recovery issue and being dealt with as it presents in warmer weather.

Compliant Aggregate for finishing jobs on QCD due to regional shortages and reducing river allocations is pushing the supply price up significantly.

### Subcontractor Performance

All subcontractors performing well. No current urgent issues or concerns with our current subcontractors on the panel.

## Financial

Given the client's request to lodge the December claim early in the month, the value claimed was the same as the November month and is in line with our overall expectations as work continues to build.

With the Phase 2 funding approved the team is planning ahead, with confidence we will have a busy construction season ahead.

During December procurement continued for various sites where IFC drawings have been provided.

Design spend continues to run at a high level with many sites or packages underway currently.

We have recently been advised of part of the November client side costs and these have been included in this report.

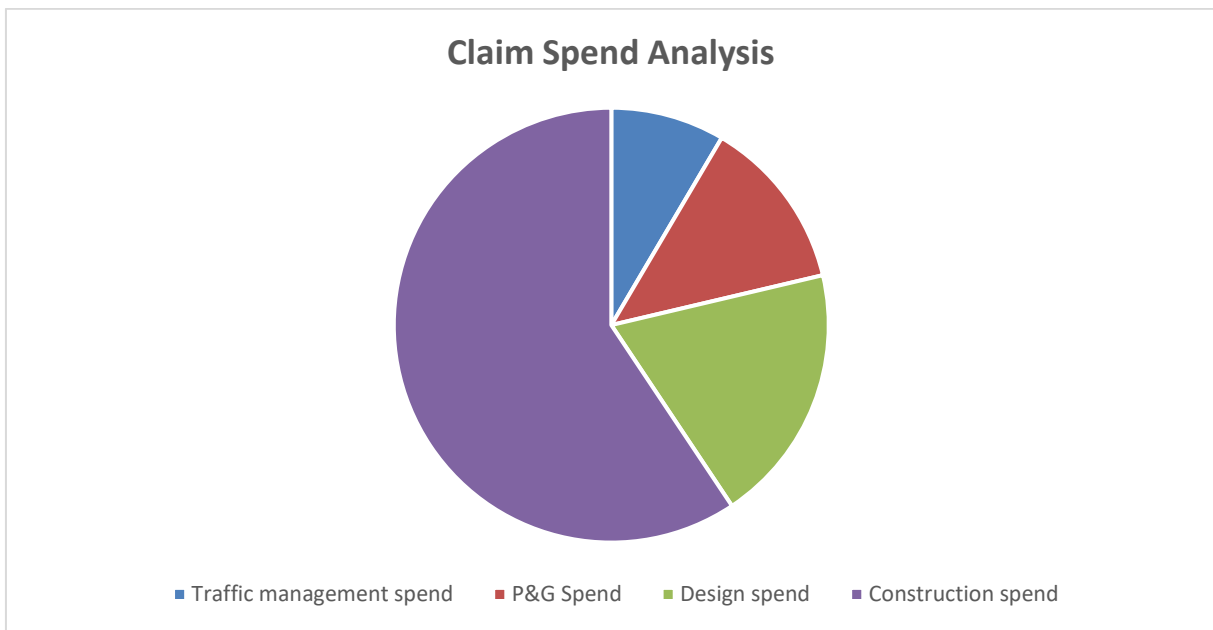
The claim schedule has now been updated to reflect more detailed cost analysis per zone and fault category.

With the programme now baselined with certainty, the below cash flow has been set up for the upcoming year.

### Cost Summary

This month's claim totalled \$1.803M. Areas of spend can be seen in the pie chart below. Please note that given the claim value was a mirror of the November claim we have not undertaken a review of the construction spend areas.

The high-level analysis of this month's claim [a mirror of the prior month's claim] is below:



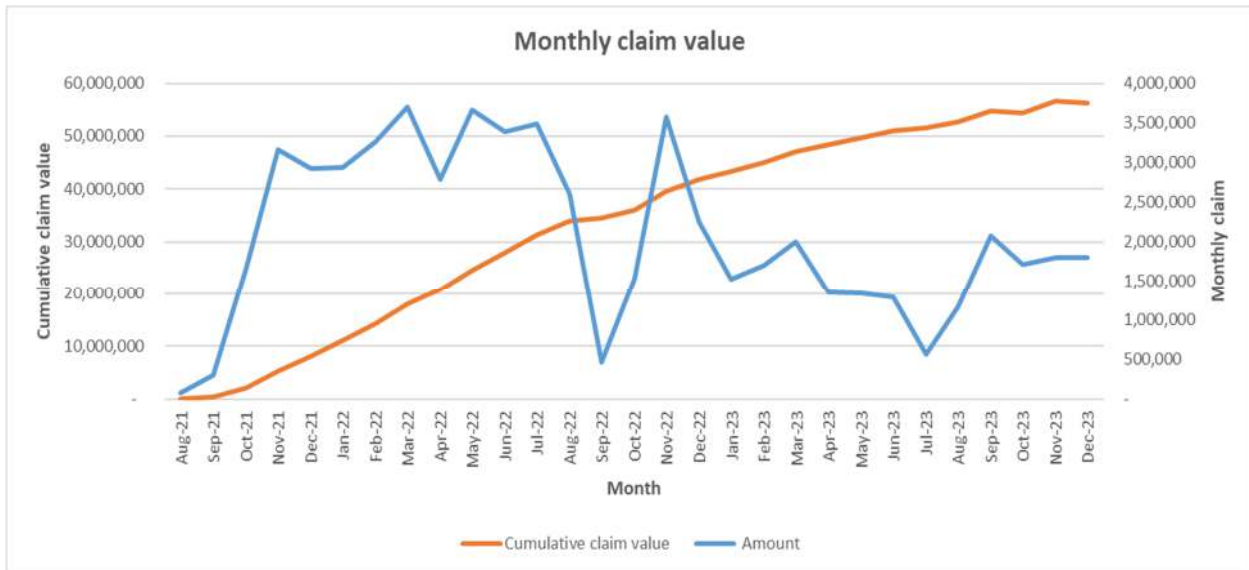
### Remaining Budget

With the phase 2 funding now confirmed the programme in total has approximately \$55.42M of budget remaining to cover both physical repairs, design, client-side costs etc.

NOTE this total does includes client-side cost spend up to November only so the actual value will be slightly less.

The cost to complete process is being revised and updated to reflect the new scope of works and forecast estimates for sites still under design.

The change management system is still being worked through to ensure that remaining budgets and cost to complete are being considered when prioritising sites currently not included in the works.



### Financial Forecast

The overall forecasted MRRT cost at completion for the phase 2 scope of works is now at \$38,94M excluding client side cost and storm related damage BAU claims as per the breakdown below. This is \$1,5M less than last period due to forecasted cost for the Bridge 256 approaches having moved from MRRT to client side cost. Note that this number does not include a forecast for the 8 advanced funding sites as yet, which will be included in the January report. Total phase 2 forecasted cost is at \$49,189M.

## Programme

Fortnightly progress update meetings with the client and assurance have continued through the month of November. These meetings create valuable conversations about any delay trends, upcoming programme risks and mitigations. The reporting information is constantly being altered and updated to reflect information that is valuable to all parties involved.

### Progress Update

*The below is based on the programme update of 30/11/23. A December update is expected in due course.*

The overall completion date is now sitting at the 13<sup>th</sup> of October 2024, driven by site QCD-715-00242 – Pukenui Road Drainage improvements (QCD Zone). This site has been the driver for the overall phase 2 completion since the last month. Unfortunately this site has been delayed through the month due to consultant delays and optioneering review due to complexity and potential easement issues. This package of work is closely worked through with MDC (Steve Murrin) to ensure correct solution for the project and the community on this road.

The land discussions continue to pose a risk to the overall programme with having experienced several delays due to land acquisition this month.

The railway iron generic design have been proven beneficial in both cost and programme. On several occasions though the site perimeters don't fall within the specifications of this design. It has been decided collectively with the client to include the design of bespoke railway iron design. This has caused some programme impacts in areas.

We have seen programme improvements due to the new level of service requirements that can be implemented within the Marlborough Sounds (phase 3) area. This has caused for a site on French Pass, which was marked as a complex site requiring full IFC design, become a simple design with minor design input and now mostly being contractor led. This created a 63 day gain on one of the sites.

A similar opportunity is likely to unfold on site AWA-856-02169, where a currently programmed full IFC design is likely to change so a simple sketch design. This site is currently driving the Awatere zone completion date, this gain will be visible in the next monthly report.

**RISK:** Easement discussion duration underestimated

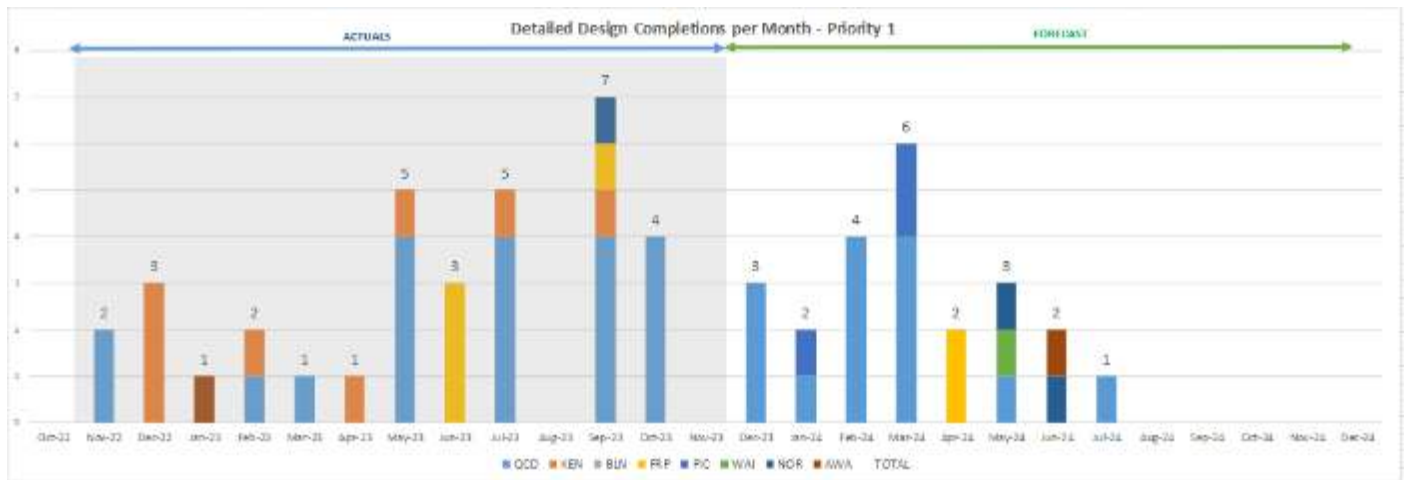
**OPPORTUNITY:** Review of Phase 3 level of service to reduce design timeframes

Other notes in relation to the above milestone table:

- **Northbank zone:** Zone completion driven by Top Valley Bridge scouring, requiring additional design assessment before proceeding. All other sites within the Northbank Zone are aimed for completion by May 2024
- **Waihopai zone:** Craig Lochart bridge, similar delays as per Top Valley bridge in Northbank. This is the only remaining open site in Waihopai with all other faults being completed.
- **Blenheim zone:** On Target
- **Kenepuru zone:** Longer procurement period due to due diligence on local subcontractor and updated construction durations based on subbie input
- **French Pass zone:** Design milestone slipped due to the design of a bespoke railway iron wall. Construction milestone gained time due to early design deliverables on a different site.

**Forward Programme**

Below graph indicates the amount of design package deliverables over the duration of the project, showing that the peak of design deliverables for phase 2 has passed. Note that the below cover the deliverables of our current design and construct scope only, this does not include the sites that have been approved for design only:



Below graph indicates the expected construction site completions over the duration of the project. The higher amount of site completions in December is due to the team pushing the completions of all minor and sketch designs now so the focus can be on the complex sites going forward.



### Programme Risk

The risk around land acquisition still exists as actual durations are hard to determine. Also continuation of designs during the negotiations cannot be guaranteed and therefore continuation of designs of linked linear to the land discussions. This does create an opportunity to continue with designs before negotiation completion and will continue to be discussed at the fortnightly progress meetings.

The completions of the zones is driven by one site only, with other site within the zone being completed significantly earlier. This is slowly shifting in the Queen Charlotte zone due to ongoing design slippages. The “near critical path” of that zone is now more accurately reviewed during the fortnightly programme meetings.

## Communications & Engagement

The weekly roading recovery e-newsletters continue to form the base of the regular MRRT communications, supported by updates on the Council’s CDEM Map, and Antenno.

In December, the e-newsletters included information regarding the progress of works at a number of sites along Queen Charlotte Drive, day closures on Pukaka Road, works in the Northbank and Waikakaho Road areas and updates on two sites in the French Pass area. A shortened version of the media release provided by the MDC on the NZTA Funding Assistance for Marlborough Sounds was also included.

Customer interactions have decreased from the previous month with 21 enquiries in December, compared with 29 in November. These customer interactions have been recorded and will be shared with MDC for their record.

Of the 21 enquiries, the majority were regarding the Kenepuru Zone with 11 or 52% of enquiries. Three of these enquiries in the Kenepuru Zone were regarding access as an essential service provider. A further five enquiries were general access. The remaining three enquiries regarded maintenance and repair queries for Kenepuru Road.

There were two enquiries concerning the Queen Charlotte Zone, both relating to questions around access during the day time closure of Teputia Heights, when borehole investigations were carried out.

There were seven enquires regarding French Pass, three of these enquiries were regarding access due to road closures in the area, a further four enquiries were received after high rainfall in the area early December, concerns around slips, water tables and culverts. Some of these issues were addressed with BAU as they did not come under recovery.

This month there were six media stories relating to the MRRT Project. One on milestones reached on Queen Charlotte Drive prior to Christmas and one on the Kenepuru Road residents only restrictions that remain in place. Both stories were also covered in the Marlborough District Council’s Sounds News page on 16 December 2023.



Four stories were published regarding the New Zealand Transport Agency, Waka Kotahi's board's indicative decision on financial assistance rates for the repair and improvements of Marlborough Sounds Roads. These stories were published in Stuff, RNZ, 1News and Scoop's online channels.

Further communication in December, included a Facebook post on 9 December for a daytime construction closure over three days on French Pass, this was also communicated to affected community groups and, VMS, Antenno and via the newsletter.

Along with the media release and story in the Council pages, a letter was sent to all Kenepuru Road residents reminding them of the resident only restrictions.

There was stakeholder and customer communication in December for the closure on Tepuia Heights including a letterbox drop, email and telephone notification to residents in the area and emergency services, and Antenno. Ngāti Kuia had been engaged regarding the drilling and an iwi monitor had been put in place while this work was carried out.

## Progress Photos





# Rivers and Drainage Section – Activity Report

---

Information prepared by Geoff Dick, Andy White, Steve Bezar, Gregor Punzel, Frank Westergard, Jan Dimmendaal, Duc Nuygen R700-014-01

## Wairau River

### Stop banks SH63 – SH1

The contractor has commenced an extensive mowing project for the stop bank system and adjoining public areas between SH63 and SH1. The work began just before Christmas and is nearing completion.

### Giffords Road

Utilizing a 40t dozer, access tracks and addressed vegetation under powerlines were maintained. The final phase of planting poles has also been completed.

### Fairway Clearing

The contractor has successfully cleared established vegetation islands within the Wairau Fairway, employing a 24t digger or a 40t dozer. These efforts focused on areas identified around Loddon Lane, SH6 road bridge and downstream of SH63 Waihopai Bridge.

### Capital Works

#### Wairau River Protection Works – Groyne 20 Conders Bend

This contract was completed in late December.



#### Wairau River Protection Works – Upper Conders Realignment

A contract was tendered for a 760m realignment of stopbank which is the next phase of the Conders upgrades.

The tender was won by Taylors Contracting Company Limited and the works are scheduled to begin in April following the harvest of the adjacent vineyards. Vines within the footprint of the new stopbank were removed earlier in preparation.



## Wairau Floodplain and Tributaries

### Lower Ōpaoa River

With the help of the council's weed boat a successful cut from Hutchesons Bridge down to the Lower Ōpaoa River mouth in November was completed, resulting in a significant drop in the town's river level. Given the upcoming restrictions on weed cuts from February to the end of April, another weed cut, commencing on 8 January has been initiated.



Repair work on three identified sites where bank slumps occurred due to floods in 2021 and 2022 have been completed. Materials from the council-owned quarry (Pukaka) were placed by a 12t digger.



### **Mill Stream**

We addressed the removal of a substantial Poplar tree, approximately 3m in diameter, that had fallen into Mill Stream. The operation required significant machinery, a 24t digger.

### **Upper Ōpaoa - Behind Lansdowne Park to Waipuna Street**

The annual weed injection programme included the stretch from the Holiday Park down to Roses Overflow weir and was completed in November 2023.

### **Omaka Below Hawkesbury**

A 30t dozer completed gravel shaping work in the dried-up Omaka below Hawkesbury aiming to divert lower flows away from the berms and protect them from erosion.

### **Riverlands and Wither Hills Streams**

Our contractor has undertaken vegetation control in Mapps Stream, Wither Stream and Reservoir Stream. Additionally, Reservoir Stream around Fyffe Street has been regraded with a 5t digger to facilitate follow-up works, repairing upstream underground stormwater pipes, without delay.

A fallen tree in Dungy's Drain was removed just before Christmas.

### **Ruakanakana Creek**

It remains a constant challenge to maintain water flow into Ruakanakana Creek. Between November 2023 and January 2024, both intakes had to be repaired multiple times after every reasonable fresh.

An extensive willow eradication programme around the intake canals and structures is demonstrating success.

Identified erosion bays in the Ruakanakana below the intake pond have been diligently repaired by a 12t digger using small rocks.

### **School Creek, Renwick**

The contractor has completed vegetation maintenance of School Creek throughout Renwick. Additionally, a section of School Creek at Brook Street has been regraded with a digger to enhance flow dynamics.

### **Spring Creek**

The annual weed injection programme, spanning from Rapaura Road down to the Wairau Floodgates, was completed in November 2023, resulting in a significant drop in water levels. Furthermore, the removal of a fallen poplar tree from Spring Creek below SH 1 was necessary to ensure access for the injection barge.

A consultant was engaged to assess the health of poplar trees growing next to Spring Creek/Stump Creek Road. These trees pose a risk of falling into the creek and blocking the twin culvert under Rapaura Road. The recovery of these trees, as evidenced in a recent event, is notably costly due to required main road traffic management.

### **Tree Nursery**

Mowing and tazing has been undertaken to maintain control over the grass in-between the poplar and willow tree rows. A follow up blanket spray has been completed to manage unwanted weeds, such as Convolvulus and Old Man's Beard.

## **Drainage**

### **Taylor River: Town Area**

Because of the slightly raised river level around Beaver Walk Bridge, a centre channel clearing has been completed between Fultons and Murphy's Creek, contributing to a significant reduction in river levels in the desired area.



### **Drainage Maintenance**

Drains A & B Grovetown have been weed raked for 715m.

Spring drain network spray schedule is almost complete. Despite a dry season, instream growth has been prolific.

Following a call from Marlborough Roads a weed blockage in Tyler Creek Condors Bend Road was cleared early in the new year as the weed had blocked a culvert and was flooding across the road.

Debris was removed from the Murphys Creek rail bridge on the Taylor Reserve as it had accumulated there over the Christmas break. The old rail carriage that serves as the bridge is too low and catches all manner of debris that is in the creek. This issue is repeated at the Fultons Creek crossing in the Taylor River reserve.

Recurring tree root intrusion into a flood gated culvert has been cleared. This intrusion caused the floodgate to remain open at high tide causing a backflow into the drain.



## Floodway Reserves

- Some weed control is programmed for the Renwick cycleway from SH6 to the Omaka ford where some vegetative encroachment is occurring.
- A meeting has been held by Rivers staff with Abel Properties to introduce them and discuss lease issues/practices as part of the transition with new staff filling the Rivers Reserve position.
- A tidy up/reinstatement of a Waihopai River infiltration gallery has been completed after works had been carried out on Council floodway land and left in a poor state. Officers had to pursue the gallery users to have this remediation carried out.



## Picton, Sounds and Awatere

### Waikawa and Waitohi Rivers

Downers completed the Picton Waterways December maintenance run just prior to the start of the Christmas break. The maintenance runs are carried out three times per year in September/October, December and March.



## Gravel Extraction

- During December both Fulton Hogan Ltd and Gill Construction completed gravel extraction at Loddon Lane. Gill Construction Ltd also extracted sand at the mouth of the Diversion under resource consent U211073 which permits extraction of 1,000m<sup>3</sup> per year.
- TC Nicholls Ltd completed gravel extraction at The Branch River.

## Quarries

### Pukaka

Development of the upper quarry continues. A bund has been formed at the back boundary and waits final fencing. Excavation has commenced on the uppermost bench (Bench 12). Screening of overburden for fill at Wairau Diversion flood repairs will be complete in January.

## Renwick and Havelock Water Metering

(Information prepared by Guanchao Yang, Stewart Sargent and Stuart Donaldson)

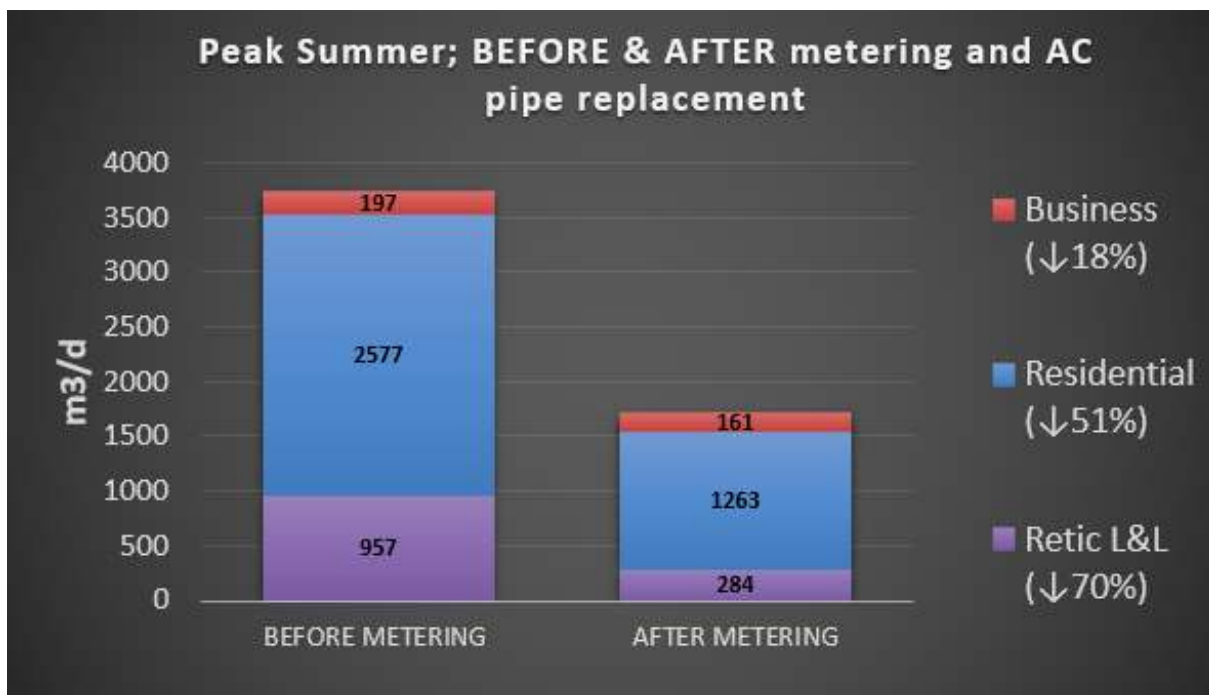
### Renwick water metering

Universal water metering has been introduced to Renwick. Meter installation started on 30 April 2020 and most meters were installed by August 2020. Charging for water use over the annual allowance started on 1 July 2021. Leaking and failing asbestos cement water mains (AC) have been replaced over the past few years, with works expected to be completed in October 2024.

Metering and AC water mains replacement have both contributed to a reduction in demand for water. The meters that have been installed are able to detect leakage within private property. Property owners have become aware of leaks and have had repairs carried out.

See Figure 1 below for reduction in Reticulation Leakage and Losses (Retic L&L), Residential Usage and Business Usage in peak summer as a result of water metering and AC pipe replacement.

Figure 1 Peak Summer Water Usage Before and After Metering and AC Pipeline Replacement



- Overall 54% reduction in peak day water usage
- Reticulation leakage and losses (Retic L&L) reduced by 70%
- Residential usage reduced by 51%
- Business usage reduced by 18%

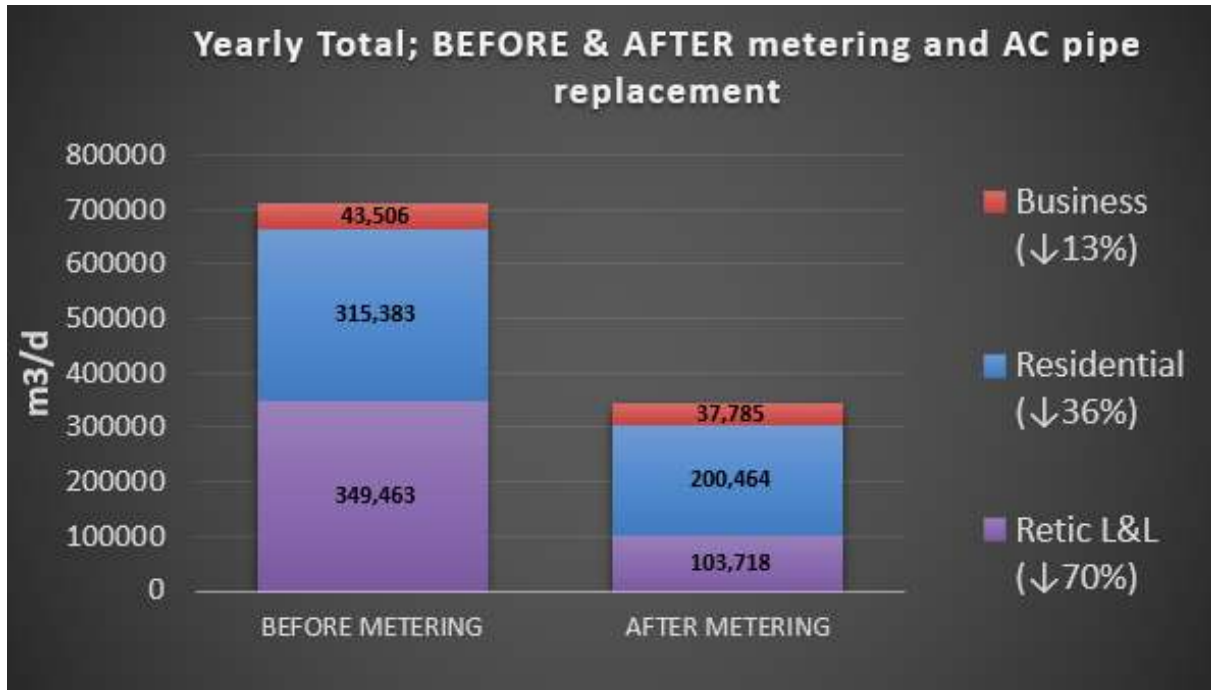
While it is not possible to precisely separate the effects of the two overlapping causes, the following is an assessed apportionment:

- 30-34% reduction due to AC mains replacement.

- 20-24% reduction due to water metering (mainly leaks fixed on private property and changes in usage characteristics e.g. less garden overwatering and wastage).

Reduction in annual water use is shown in Figure 2.

**Figure 2 Annual Water Usage Before and After Metering and AC Pipeline Replacement**



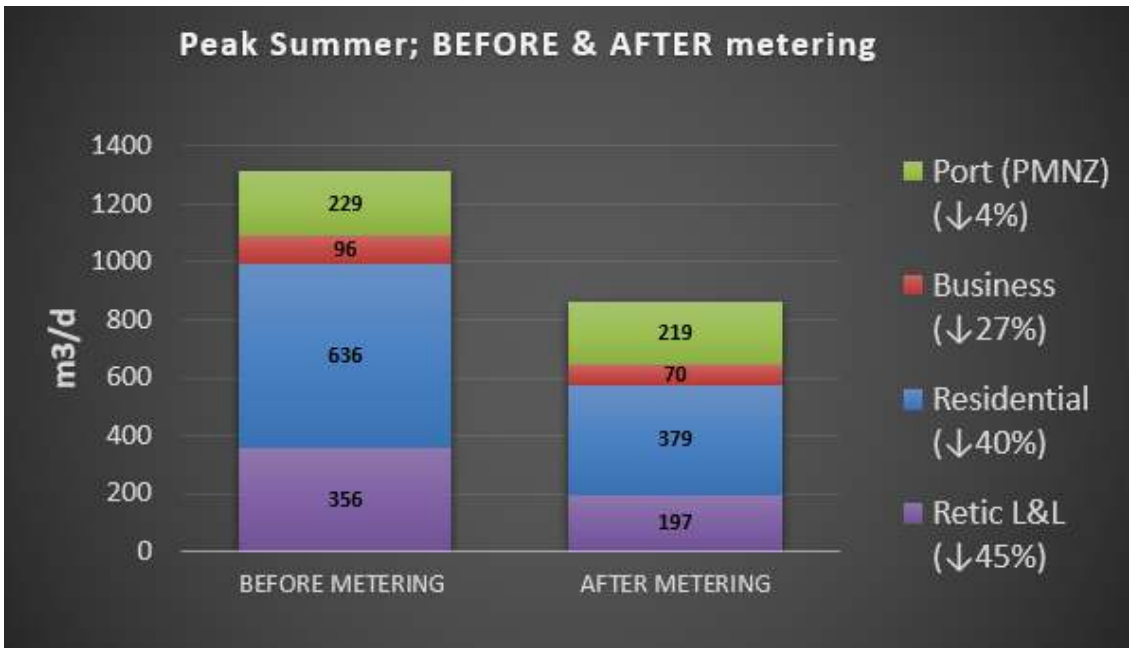
- Overall 52% reduction in annual water use
- Reticulation leakage and losses (Retic L&L) reduced by 70%.
- Residential usage reduced by 36%.
- Business usage reduced by 13%.

### Havelock water metering

Universal water metering has been introduced to Havelock. Meter installation started on 30 April 2020 and most meters were installed by August 2020. Charging for water use over the annual allowance started on 1 July 2021. Water metering has effectively reduced water losses and residential usage in Havelock.

See Figure 3 below for reduction in Reticulation Leakage and Losses (Retic L&L), Residential Usage, Business Usage and Port Usage in peak summer.

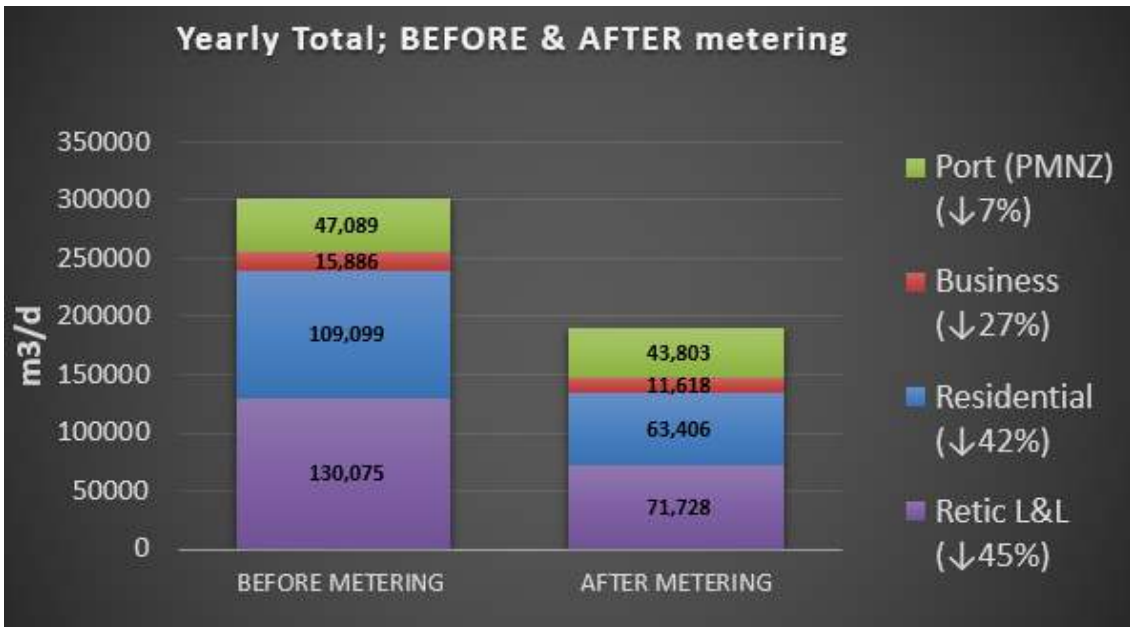
Figure 3 Peak Summer Water Usage Before and After Metering



- Overall 34% reduction in peak day water usage
- Reticulation leakage and losses (Retic L&L) reduced by 45%
- Residential usage reduced by 40%
- Business usage reduced by 27% (old meters replaced by new meters)
- Port (PMNZ) usage reduced by 4% (always being metered, so no obvious reduction).

Reduction in annual water use is shown in Figure 4

Figure 4 Annual Water Usage Before and After Metering



- Overall 37% reduction
- Reticulation leakage and losses (Retic L&L) reduced by 45%.
- Residential usage reduced by 42%.
- Business usage reduced by 27%.
- Port (PMNZ) usage reduced by 7%.

# Services and Operations

---

## Education Report

(Information prepared by Annie McDonald on behalf of the education team of Annie McDonald, Angela Wentworth and Ramona Millen) E340-001-001-01

Highlights from kindergartens and schools can be found in our term 4 Greenchat - [GREENchat - Marlborough District Council](#) sent out to schools at the end of each term.

The Enviroschools Marlborough website shares local school and kindergarten stories - [Blog and Stories - Enviroschools Marlborough](#)

We also have a Sustainable Actions ideas flyer we send to schools at the beginning of each term sharing dates, events and actions teachers and students can take part in- [News & Funding - Enviroschools Marlborough](#) .

Our focus this year has been on the Enviroschools Guiding Principle - Respect for Diversity. It has enabled our team to work with some great people and enrich the programmes we deliver to schools.

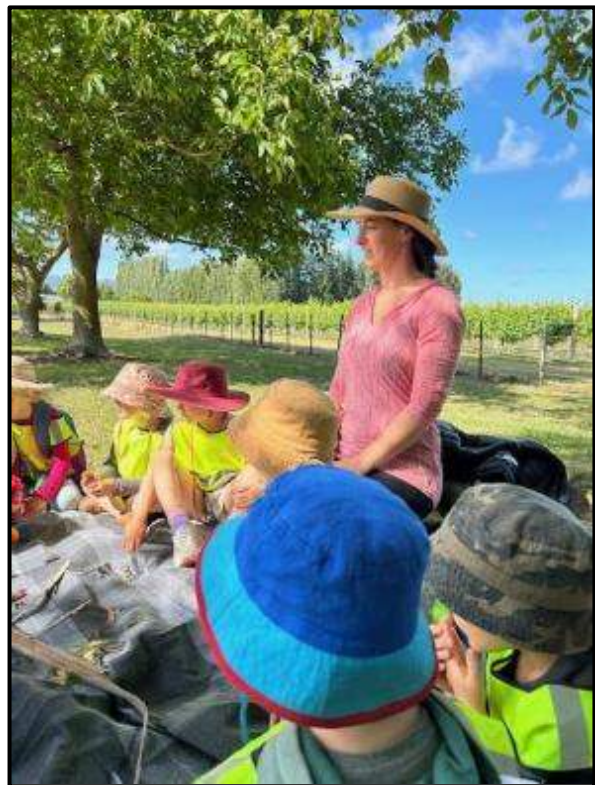
Our education team made almost 40 visits to schools, kindergartens, ECE's as well as looking at options for schools using community spaces such as with Wild Waikawa and Marshall Place.

Educators have been setting up worm farms in kindergartens, looking at nature spaces in schools and identifying what is there and what is missing in preparation for designing planting programmes. Teacher meetings have been delivered on Te Mataiaho - the refreshed curriculum to see how this links with Enviroschools. Kindergartens have been supported with projects and preparation for reflections in 2024. A networking event for students was run at Koru Nature reserve looking at the diversity of nature with some close-up encounters with giant weta, ghekos and kakariki.

The Nature Connection pilot with Spring Creek School and Springlands Kindergarten has concluded and was successful from the valuations undertaken. Both the school and kindergarten will continue their programmes next year. Our educators have enjoyed being a regular part of these weekly and fortnightly sessions trying out the different pathways students connect to nature. Observations were completed and shared with a national Community of Practice through NZAEE around Nature Connection. The link to the presentation is here [Community of Practice Nature Connection Observations 2023.pptx - Google Slides](#)

Teachers' observations were valuable and over a period of weeks they could see positive changes in the way students interacted with nature. The school and kindergarten will be invited to share their learnings with a wider group of interested schools and kindergartens in early 2024 and our education team will help support those interested in trying out Nature Connection programmes.

We are continuing to work collaboratively with the REAP educators in the Nature Connection space and looking at other opportunities to deliver environmental education with them in the early childhood area. We are not able to offer places in Enviroschools for the large ECE sector so this will enable Ramona to support ECE's with environmental education offerings.



Our education team has continued with professional development on Enviroschools reflections. With support from the national Enviroschools team we are moving away from reflecting at levels of Bronze, Silver and Green Gold in 2024 and trying a different model that will focus on holistic reflection.

Our team has been working with the Nga Kawatau document which shares the aspirations and expectations on Te Taihiti to see how we can support iwi with the programmes we deliver.

As part of our coffee and cake sessions for teachers and as an extension to the Nature Connection work Ramona has been leading, a Rongoa workshop delivered by Ripeka and Trisha Hook and Lovey Walsh at Mayfield kindergarten had 24 teachers taking part. Another workshop on Rongoa will be run in early 2024 as part of our focus on Place – Wahi for 2024.

The Kids Edible Garden programme continues to provide opportunities for schools and students to learn about recycling organic waste, composting and growing vegetables. Angela develops each term plan and supports facilitators with training and modelling garden activities. Angela ran a seed saving workshop for teachers and shared the teacher resource padlet.

Bohally Intermediate worked on a collaboration with the coordinator, school facilitator and a team member from Te Whatu Ora. The KEGs students wanted to learn more about how to plant and grow kumara.

The team member had worked with a group of boys from MBC last season to plant kumara at the community gardens – They had great success harvesting 90 kg of kumara! The team member from Te Whatu Ora was keen to work alongside the KEG programme to increase knowledge of how Māori grew kumara here in Wairau and Bohally seemed like a good fit as the students wanted to grow kumara for next year's school hangi.

The students prepared the beds, digging in lots of compost. The team member brought in tipu and showed the students how to create mounds covered in black polythene and the traditional way of planting in a J. They lay tipu along the ground then gently bent up the shoots to stick up above the soil in a J. Sharing will be done in term 1, 2024 to see how this project worked and could be extended to other schools.

Linkwater School have a school orchard planted a number of years ago as part of a collaboration with the NMDHB and the Kids Edible Garden programme where 15 schools were supported with putting in an orchard at their school.

Junior students at Linkwater school looked at ways to thin the fruit on their trees. With Angela's help they observed what has changed in the orchard since their last visit and what is happening on the fruit trees. They discussed what it means for trees with too much fruit, and what would happen if they thinned fruit off. Students were given a demonstration on how to do this then took on the work themselves. In the garden beds they watered plants, spread mulch around berries, spray aphids with a homemade natural solution and planted sunflower seeds.

Angela has taken on delivering stream studies for schools as part of her education role. This term Angela has supported camps at Pine Valley and Mistletoe Bay, run two stream studies with local schools that looked at water clarity, flow, and the health of the streams by searching for and investigating the invertebrates that live there.

As part of the One Billion Trees fund through the EnviroSchools national team an allocation for Spring Creek, Waikawa Bay and Springlands Schools enabled them to put in new native areas. Some funds have been held over to support two kindergartens with Autumn 2024 native plantings.





Our team met with Envirohub in November to look at opportunities to extend the Litter Intelligence project run through Sustainable Coastlines to include schools in 2024. Currently Envirohub hold the Litter Intelligence survey kit and run one Litter Intelligence survey once a quarter. With supplementary funding Envirohub could coordinate and run further surveys around the region working with schools. We are planning to redirect \$4K that was used for Sustainable Living programmes which has not been active for some time at a national level and had become more a web-based programme to the Litter Intelligence project.

Students will get a hands-on opportunity to be part of a citizen science programme.

This joint approach would see the Enviroschools team liaising with local schools to find classes keen to be involved and with the Envirohub Marlborough team running the surveys for the schools on the day, coordinating the schools visit, preparation before the day and follow up afterwards.

This project provides multiple benefits to students based in nature allowing an opportunity for taking action, participating in cleaning up a local natural area, observation skills, data gathering, data analysis and other mathematical applications with the post-clean up survey data. Post-survey analysis will also allow students to have a better understanding of what rubbish/litter is currently an issue and provide opportunities to find long-term solutions both at school and with the wider community.

Inclusion in a national project that is actively involved in changing laws and regulations in Aotearoa is highly encouraging and rewarding for students. In addition, this project also promotes environmental protection and appreciation in young people that will carry on into adulthood.



# Parks and Open Spaces Activity Report

---

(Information prepared by Jane Tito, Robert Hutchinson, Kiri Whiteman, Grahame Smail, Carolyn Jones, Linda Craighead, Brad Molony, Regan Russell, Rachel Hutchinson, Murray Morgan, Ross Laybourn, Mike Lawson, Robyn Blackburn) R510-009-000-01, R510-006-02, R510-005-04-02, R800-005-03

## Blenheim Parks

### Seymour Square

At the start of December the Seymour Square fountain was emptied for sealing and painting. A long forecast of dry warm weather is required for the sealer and paint to set. This summer has been drier and the work has now been completed.



The beds were completely planted by mid-week before Christmas and the displays are now starting to look stunning. Over the past couple of weeks the gardens in Seymour Square have been weeded and maintained, with some of the trees also getting a quick lift and dead wood removed.



## Pollard Park

The Park has been remarkably busy with lots of families making use of the area. There have also been multiple busloads of visitors from the cruise ships coming through over the holiday period.

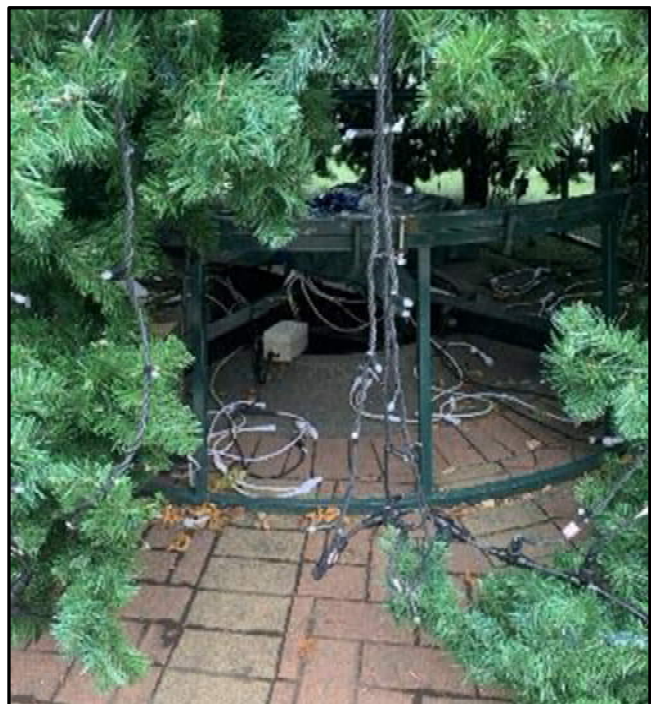
Up until the start of January the growth rates have stayed high, with both lawn and weed growth keeping staff busy over the Christmas break.

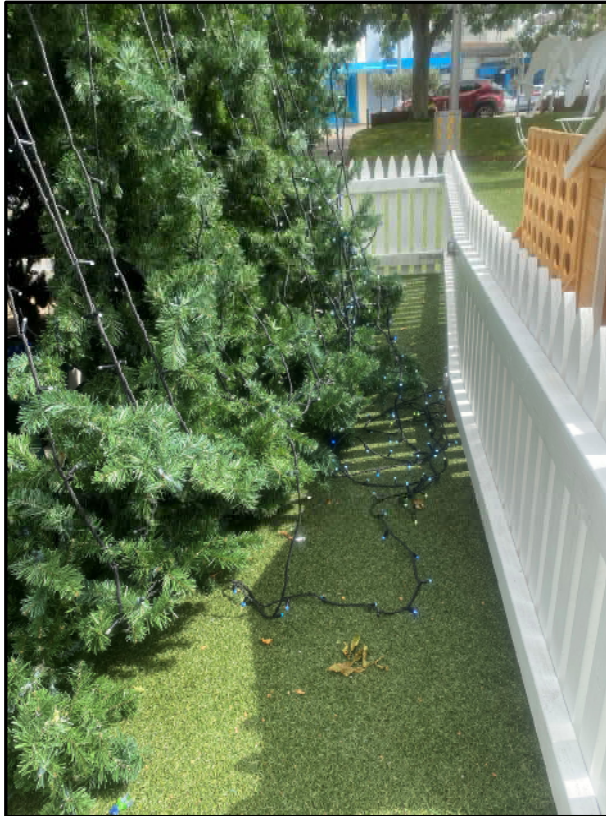
Staff finished the summer annual planting in Pollard Park mid-December and the flowers are starting to put on an impressive display. There have already been a lot of nice comments from the public. Staff are currently working on normal maintenance jobs throughout the Park with lots of weeding, trimming and dead heading.



## Forum Christmas Tree

The Blenheim Christmas tree located in the Forum was taken down a week early this year following continued vandalism to the lights on the tree and its electrical system inside the tree. In the days before the tree's removal only half the lights were working. The remaining workable lights will be installed Christmas 2024 with a new selection of stars and baubles.





### **Athletic Park**

Over the New Year a successful NZ Roller Sports champs were held at three locations in Blenheim: Athletic Park, Stadium 2000 and the Kart Track. Speed Skate NZ made the following comment on the champs:

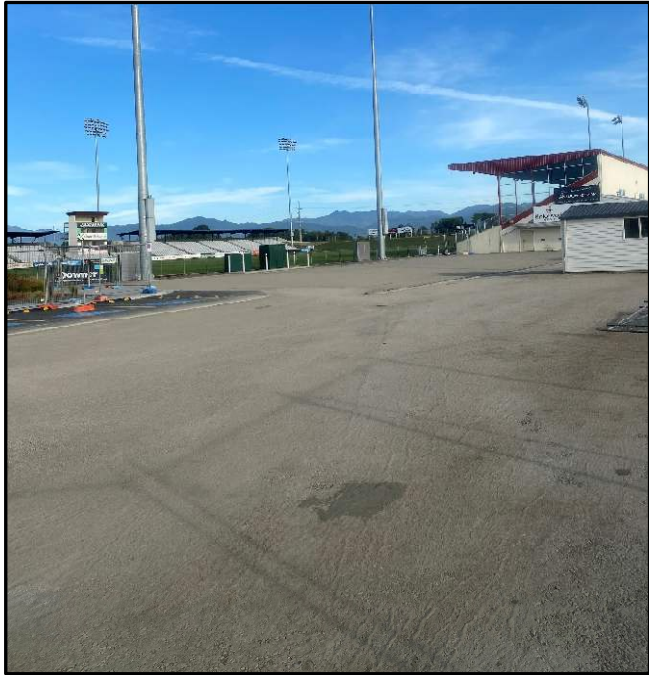
*As usual, our first week of the new year was spent at the track for the 2024 National Championships! [Blenheim Roller Skating Club](#) hosted us across three locations for the Road, Flat Track, and Marathon events - thanks Blenheim! This was one of our biggest nationals yet with 110 competitors! It's awesome to see the younger grades with such strong skaters coming through. Thanks to everyone who came, whether you were athlete, official, volunteer, or supporter YOU help make this community the awesome space that it is! The sportsmanship, love and friendship you showed between clubs is a truly special thing.*

### **New Hockey Turf**

Parks and Open Spaces along with Marlborough Hockey continue to work with the Ministry of Education and the Colleges to produce an MOU for the use of the new turf at McLachlan Street. The MOU will ensure the transfer from the old location to the new location is seamless and is like for like with the current agreements that are in place for the College Park turf.

### **Lansdowne Park**

Work is complete on the upgrade of the women's toilets on the north side of the east grandstand. The carpark is now sealed and all that remains to complete this project is the line marking for parking.



## Manor Park

As part of the 2023 Annual Plan submission process, a request was received (and supported by a small petition), for a footpath system to allow access across Manor Park to and from Redwood Street to Lewis Street and Manor Place. A questionnaire seeking feedback on this proposal was sent to 170 residents in the area seeking their comments on the request.

At the time of writing over 40 responses have been received. The information gathered will be included in a budget paper for the Long-Term Plan 2024 - 2034.

## Fires

A section of garden in the Monro Street area of the Taylor River was deliberately set on fire over the holiday break causing damage to flaxes and trees. Luckily there was still some moisture in the grass leaf and the fire did not spread too far from the garden.



Other fires have also occurred on an area of esplanade reserve adjacent to the east side of the Ōpaoa River near Dillons Point Road as well as underneath the boardwalk alongside the Ōpaoa River.



A fire occurred at the temporary responsible camping area at the Wairau Diversion on the afternoon of 4 January. The fire started accidentally whilst a couple were cooking dinner. FENZ attended the grass fire which was brought under control fairly quickly. No one was injured in the incident and all vehicles were able to leave the site safely.

Fire crews in attendance advised that freedom camping vehicles should not be allowed to return overnight due to the potential for a flare up. Given this advice and that the whole Diversion area is very dry, a decision was made to close the responsible camping site. Barriers have been put in place at the entrance to the Diversion on Neal Road.

The site will be closed until at least 29 February to enable the land to recover and the fire risk to abate. Camping organisations and camping information providers were advised of the closure and the Council's website updated.

The Diversion is the largest of the Council's responsible camping sites so there is a loss of space for those wanting to camp. However, there is capacity within the Council's other responsible camping sites to temporarily accommodate some of those campers who may have wanted to camp at the Diversion, including the Wynen Street carpark and Renwick Domain. Neither of these sites have reached capacity to date. In addition there are Department of Conservation and commercial campgrounds that are available.

Staff will review the closure in February to determine whether it is safe for vehicles to stay overnight.





The Wither Hills Farm Park was shut in early January due to the extreme fire risk.

Prior to summer, a stakeholder group was established to map out a response process. This particular closure includes the whole Park with advice from FENZ being that the risk is too high to allow any access to the Park. Opening lower tracks presents a false sense of safety.

Along with signage at the Park entrances, comms around the closure through social media has occurred as well as in the print media. Most people have been very good about keeping away from the Park and feedback through social media has been mostly positive.

## Renwick Parks

River Terrace residents enjoyed a great time using the recently revamped Hammond Street Reserve for a New Year annual barbeque and neighbourhood get together.



## Awatere and Flaxbourne Parks

Replacement of the solar heated water circulation pump and other miscellaneous plant room maintenance was undertaken to allow the Seddon Domain pool to open just before Christmas.

In Ward staff are working through the Flaxbourne Settlers Association on a playground for the Ward community with consideration being giving to co-locating it adjacent to the Ward Hall and new heritage centre.

## Picton Parks

### Picton Foreshore Reserve

All picnic tables, benches and whanau seats on the Picton Foreshore Reserve were repainted along with the children's playground pirate ship. Miscellaneous repairs and improvements were also undertaken on the zero-depth water play equipment. Some lovely feedback was received on the Foreshore Reserve recently.

*Please pass on to whomever it concerns my thanks for such a lovely area down around the foreshore and playground at the Picton Foreshore. We have not been down there for a while, and we took our grandchildren down and enjoyed the shaded areas and the water play area. Well done. What a marvellous asset.*

Unfortunately, with the water restrictions in Picton in January, water to the play equipment has been turned off to assist in reducing demand on supplies.

Arborists trimmed and lifted the large Phoenix palms, elms and other specimen trees across the Reserve. This included a trim and lift of the trees at the western end of the Museum and work on the three large notable trees at the cruise ship shuttle bus passenger waiting area. Most of this work required tree climbing.

New coloured lighting was installed in the Pohutukawa tree adjacent to the museum and memorial steps.

The Reserve hosted the annual New Year's Eve community event and fireworks display.

### Auckland Street Reserve – Picton Skate Park/Youth Space

A revamp of the skate park/youth space was largely completed just before Christmas following over a year of consultation with Picton schools and several meetings with Queen Charlotte College student leaders and local Iwi.

The work included an enlarged and revamped multi-goal play area with a marked out three-on-three basketball court and back board goal, spectator seating and new colourful 6m shade umbrella. A new fenced off social grass volleyball area with net and two new colourful shaded areas and picnic tables was also installed. New signage, drinking fountains and pathway have all but completed the revamp of the Reserve with local Iwi working on some decorative panels.







## Nelson Square

Some of the larger specimen trees and younger Titoki in the tree cages have been trimmed and lifted.

## Shelly Beach Reserve

A large, new 6m shade umbrella donated by the Picton Lions was installed just before Christmas and the seats and tables at the Reserve were all repainted. Staff are also working on installing a beach wash down shower and drinking fountain.

The shoreline rock revetment work done a few years ago to help protect the Reserve from erosion is showing very positive results. There has been a big improvement in the health and growth of the Pohutukawa trees along this small narrow coastal reserve strip.

## Picton High Street and Library Plantings

The High Street and Library shrub plantings were all re-barked and refreshed just before Christmas.

## Barnes Track

The Barnes Track has been closed for several weeks for safety reasons as the track is eroding on some particularly narrow sections. A safety audit of the track is due to be undertaken in early February to see what is required to remediate the issue and assess the safety of the track as a whole.

## Port Marlborough Pavilion

### *Marlborough Mount Everest Challenge*

The Marlborough Mount Everest Challenge finished on 25 November 2023, with 86% of participants completing the challenge individually or as part of a team. The 341 active participants achieved some huge numbers this year with 7,018 climbs and a total of 2,144,726 metres climbed over the seven weeks. This averaged 6,290m per person, which is higher than Mount Kilimanjaro.

The standout team this year was the Uppers and Downers. This team of three from the Picton Volunteer Fire Brigade collectively achieved 364 climbs and 89,592m over the challenge. All three members of the team also finished in the top four of the individual leaderboards. Iwan finished top of the individual leaderboard with an amazing 127 climbs and 31,350m climbed.



### *School Holiday drop in sessions*

The Port Marlborough Pavilion offers a holiday programme filled with fun for kids aged 5-12 years over the summer school holidays. This year we have changed the programme to five two-hour sessions with each session being based around a key sport as well as a team building activity to keep kids busy and active over the school holidays. Our first session was dodgeball followed by a tower building competition.



## **Northern Marlborough/Sounds**

### **Havelock Domain**

Havelock was bustling over the Christmas break. Prior to Christmas, temporary fencing was erected in the Domain to set aside an area specifically for recreation. This was done in response to complaints in prior years of trailer parking and overflow camping encroaching into the recreation area. The fencing has worked well over the summer and ensured residents and visitors had enough green space in which to play and kick a ball around.



The pétanque court has just had a top up thanks to Havelock Musselshell Processors who donated, delivered and spread the mussel shells for the community.

### **Link Pathway Carparking and Signage**

Council received funding in the 2021 Tourism Infrastructure Fund to create dedicated carparking along Queen Charlotte Drive for the Link Pathway. Due to storm damage in the subsequent years, the project was put on hold. However, recently three of the carparks have been completed by the Link Pathway Trust and funded by TIF and Council. Signage has also been erected. These were installed just prior to Christmas and were well used over the holiday period.

## **District Public Conveniences**

A recent visitor from out of district commented very favourably on the condition of the Council's toilet facilities:

*Just a note to say great work on the number of public toilets available in your region and the cleanliness of them. My family and I travelled around your region recently and there were so many available and all in good condition so congrats to the cleaners and those that manage them.*

### **Picton Foreshore Reserve**

Renewal of the Picton Foreshore Reserve toilets (under the Picton Museum) was completed in time for the cruise ship and holiday period. Work included an interior and exterior repaint, replacement of pans and inwall cistern flush systems, partial tiling of men's floor area, a new baby change table, improved lighting, ventilation, fixtures and fittings, new internal and external hand wash basins and mirrors.

### **Waikawa Bay Foreshore Reserve and Shelly Beach Reserve**

Minor maintenance and improvement work to toilets on these Reserves was undertaken. This included a repaint, improved ventilation, signage and new decorative lighting.

### **Powerhouse Reserve/Auckland Street Reserve**

A refresh of the Exeloo toilet facilities at the Powerhouse Reserve Picton is underway, which should extend the life expectancy of this high use toilet unit for another twenty years or so. Improvement to the access pathway and the removal of possible trip hazards have also been completed since the last reporting period.

## Blenheim Township

A refresh of the Blenheim CBD Exeloo toilet facilities at High Street (Farmers carpark), Kinross Street, Seymour Street (Countdown), and Redwoodtown Village is underway. All facilities are over twenty years old and the modernisation and upgrades should extend the life expectancy of these high use toilet units for another twenty years plus.

A similar refresh and modernisation of the Blenheim Railway Station and Brayshaw Park public toilets is also programmed.

## Other public toilet facilities

Across the rest of the public toilets network (71 facilities district wide), the usual plumbing and electrical repairs, maintenance and dealing with vandalism is ongoing. Staff and contractors work to deal with any issue or concern in the best possible time frame to minimise user inconvenience.

## Use Data

A number of the toilet facilities record user numbers. Use numbers for the 14-day period of 21 December 2023 – 3 January 2024 are shown below for a number of various sites across the district.

Site Location	Average daily use
Anakiwa	89
Seymour Square	283
Collins Memorial Reserve	106
Havelock Township	630
Okiwi Bay	223
Picton High Street	450
Rai Valley Township	524

## District Cemeteries

Improvement work, in line with the individual cemetery plan actions across several of Council's eight administered cemeteries, has continued over the past period. This has included the development of burial and ashes interment beams based on demand, including a new ashes beam to the eastern side of Awatere/Seddon Cemetery.

Preparations are underway to reseal the road accessways and parking bays at Tuamarina, Fairhall, Omaka and Havelock cemeteries.

The Parks and Open Spaces summer student has made excellent progress to research and develop content (narrative and photos) for long-awaited history interpretive panels for the Flaxbourne and Rai Valley cemeteries. These cemetery history panels will be installed alongside new cemetery orientation map panels, an item for which we frequently get requests from visitors.

The new Services Cemetery sign has been installed at Fairhall Cemetery, with signs also requested for the Services Cemeteries at Omaka, Rai Valley and Seddon. These signs are paid for by Veterans' Affairs as part of their contribution to maintaining the Service Areas.



The Council arranges two joint cemeteries meetings each year, which give the opportunity for Council staff, cemeteries' contractors and funeral directors to get together and collectively discuss any issues that have arisen in this area. Usual topics on the agenda include health and safety concerns, any changes to our procedures or the Cemeteries' Handbook, and a recap of work underway, or planned for, each of the eight Council-administered cemeteries.

One discussion at our December 2023 meeting centred around refurbishment of headstones and who 'owns' a plot and decides on future interments allowed in that plot. The Council has had a number of cases this year involving families where there are differences of opinions and this is an area where we are looking to improve our processes for managing these situations.

Another topic discussed was the issue of alcohol left at graves by friends and family. There have been reports from other districts of children going to a cemetery and opening and consuming alcohol left on the plots. Our Cemeteries' Bylaw clearly states that "Glass, pottery, metal or other breakable items or items that may pose a danger must not be used or placed on the memorial, beam or the grassed area of the plot". This is also mentioned in the Cemeteries' Handbook but we are working on improving the wording to make this restriction even clearer.

The topic of breakable adornments left beside graves is a delicate area as we understand that these are placed out of love and respect for the deceased. However, we do need to balance this with our health and safety responsibilities to protect visitors and contractors at the cemeteries. Removing and storing these for a reasonable period of time before disposing of them is undertaken by our contractors under instruction from Council's cemeteries' staff. Glass beads, for example, can be flicked up by a lawnmower, becoming dangerous missiles that may cause injury to people or damage to headstones.

Some minor matters that arose during the meeting and where we have already made progress in the last six weeks are: new number plaques for the Fairhall Ashes Niche Wall to assist in locating a specific plot, a holder installed for Cemeteries' Handbooks at Picton Cemetery and, as mentioned earlier, the new ashes beam at Seddon.

## **District Memorials**

Work on the development of a master planning document for the long-term management of the district memorials (mostly the war memorials), is progressing well.

This work is to research and collate key information into one place and help ensure long term budgetary requirements and prioritisation for the ongoing care and protection of the memorials is provided for within Council's long term planning processes.

Preparations to reseal the road accessway at the Flaxbourne War Memorial is underway.

## Walking and cycling

A comms campaign is underway promoting some of the lesser-known tracks and trails within the region. With the closure of the trails on the Wither Hills due to fire risk, the campaign has come at a great time, suggesting alternative areas to recreate within the region.

## Playgrounds

Work to decommission the Havelock Playground and relocate two pieces of outdoor exercise equipment begins in mid-February to make way for the new playground due to be opened early March.

## Policy and planning

### Resource consents

Resource consents to enable freedom camping at four of the sites identified in the Responsible Camping Control Bylaw 2022 have been lodged. The consents are for the Wash Bridge Recreation Reserve (in the west of the District towards St Arnaud), the Renwick Dog Park, Alfred Stream Reserve (near Rai Valley) and Opouri Road (adjacent to Carluke Domian near Rai Valley).

Consents for the Renwick Dog Park and Alfred Stream have now been granted. Discussions with NZTA Waka Kotahi on the Wash Bridge site were completed prior to Christmas and it is anticipated that this consent will be determined soon. The site at Opouri Road has been the subject of limited notification and this closes on 8 February.

### Wither Hills Farm Park Management Plan Review

Policy development for the new Wither Hills Farm Park Management Plan is progressing very well. A draft policy paper, from which elements will ultimately be used to populate both the draft management plan and the associated background information document is fairly complete and is being considered by staff. Once this has been advanced further workshops with Councillors will be arranged.

### Tree Policy Review

With full Council confirming recommendations of the Assets and Services Committee minutes to notify the reviewed Tree Policy for public feedback, arrangements have been made for notification to occur on 25 January. A six-week feedback period will be provided with feedback closing on 7 March. Feedback will be reported to a subsequent Assets and Services Committee meeting.

### Specialist Change Facilities Policy

Submitters have been advised of the Council's decision on the reviewed Specialist Change Facilities Policy which was confirmed by full Council on 14 December. The updated Policy is available on the Council's website.

## Rangers' Report

Park Rangers have generally reported a reasonably quiet few months on their patrols of parks and river reserves. While illegal activity is still occurring, the numbers of instances recorded for illegal dumping and littering appear to have reduced in the last three months of the year compared with mid-year.

Illegal Dumping and Littering	May 2023	June 2023	July 2023	Aug 2023	Sept 2023	Oct 2023	Nov 2023	Dec 2023
Garden Waste	-	6	6	2	1	3	1	2

Illegal Dumping and Littering	May 2023	June 2023	July 2023	Aug 2023	Sept 2023	Oct 2023	Nov 2023	Dec 2023
Abandoned Vehicle	2	1	1	-	1	-	-	1
General Illegal Dumping	11	14	8	10	11	8	6	8
Offal	4	3	3	7	1	2	6	3
Littering	1	13	15	8	2	5	4	5



Remnants of party and fire on Wairau River Reserve

Rangers have also responded to a number of reports or complaints with illegal motorbike use on reserves, including on the Wairau River and at Tirimoana Reserve.

### Intentional damage

Over the past six months there have been 30 instances of intentional damage recorded by the Rangers with many of these being damage by vehicles driving off formed roads along the Wairau River. This is of concern as there is damage being done to stop banks with the potential for them to be undermined in flood events.





Cutting of wire ropes and damage to gates and signs is also a relatively frequent occurrence around the Wairau River environs.

### Woodcutting

In the October Assets and Service Committee Information Pack it was reported that there had been 19 instances of illegal woodcutting along the Wairau River for the period 1 May through until the end of July. A significant increase in reported instances of illegal wood cutting then occurred in the six-week period from 1 August-19 September with 25 instances reported by the Rangers, all along the Wairau River.

Since September there has been a decrease in reports of illegal wood cutting which is expected with moving into warmer weather. However, the activity is still occurring and since 20 September 2023 there have been 18 occasions where Rangers have identified the illegally felling of trees or come across people removing wood from Council managed land. The occurrences are mostly along the Wairau River.

### Responsible Camping

There has been an increase in the numbers of people camping and staying at Council’s responsible camping sites across the district. The number of vehicles recorded at the 11 sites since the commencement of the monitoring contract on 1 December, is 4559 with the majority staying at the Taylor Dam Reserve, Wynen Street carpark and Wairau Diversion sites.

With the recent fire having closed the Wairau Diversion site there are increasing numbers of campers at the other sites. The damage to the site including ground contamination resulted in closure until the end of February. Council will reassess the site in early February to consider whether it can be opened earlier.

The contractor is providing an education focused watch at the sites, informing visitors of the rules around freedom camping through the Freedom Camping Act and the new Self-contained Vehicle Legislation Act. The new legislation requires vehicles to be self-contained and have a toilet installed and plumbed into the vehicle.

The contractor reports a constant flow of campers entering Marlborough and staying at different sites. Most campers are staying just one or two nights as can be seen in the table below.

**Table: Number of vehicles visiting Council’s Responsible Camping sites**

No. of nights	No. of vehicles
1	1367
2	570
3	173
4	70
5	35
6	23
7	13
8	5
9	4
10	6

# Road Safety Coordinator Update

(Information prepared by Robyn Blackburn)

R800-005-03

## Driver Licencing

Supporting Families has again had their MSD funding quota for delivering the Restricted Driver Licence programme increased - from 17 to 37 people. Their initial quota when the programme started was ten so it is promising to see the confidence MSD has in the way Supporting Families deliver their Restricted Driver Licence programme and means increased support for our local community.

While this does not directly affect the programmes Supporting Families delivers for Council in this space, it means Supporting Families are able to employ a dedicated person to the driver licence support role and that does benefit the delivery of Council's programmes that fall outside MSD programme eligibility. Since July 2023, 49 drivers have registered through the Community Driver Programme provided by Council.

## Motorcycle Safety

The Marlborough Motorcycle Safety Group in conjunction with ACC and Tasman District Council is planning an event in February with a presentation and bike checks from Dave Moss. Dave is an internationally recognised specialist in tuning motorcycles to maximise the safety and comfort for riders. He will also teach riders how to tune their own bikes to ensure their ride is as safe as possible.

## Reshaping Streets – Henry Street river to park connection

Reshaping Streets is a package of regulatory changes that will enable communities and local authorities, like councils, to work together to modify their existing streets to provide more space for people to move around using a variety of transport options.

It does this by giving councils the option to:

- support Community Streets
- establish School Streets
- pilot, or trial street changes to inform future permanent changes to streets
- better manage traffic in their communities.

Currently, with support from the Parks and Open Spaces team, a design plan and an installation and maintenance funding stream are being finalised to pilot a street change on Henry Street. Changes are proposed to connect the Taylor River Reserve with Seymour Square but improvements to visibility at two intersections are the most significant aspect of any change. Once designs have been progressed further, a report will be prepared for the Assets & Services Committee.

## 2023 Clued-up Kids

We successfully delivered the 17<sup>th</sup> year of the Marlborough Clued-up Kids programme at Brayshaw Park in early December.

The programme saw eight safety programmes delivered by several agencies such as FENZ – making your way out of a dark room in a fire emergency, and NZ Police – Cyber Safety and navigating through the internet obstacles and pitfalls.

Council has several safety programmes at the event including Harbours delivering water safety messaging, Road Safety delivering messaging relating to the differences between Pedestrian Crossings and Courtesy Crossings, and our Emergency Management Shakey House allowing students to practise their earthquake drill.

Maata Waka deliver dog safety, Kiwi Rail deliver rail safety, Well Being messaging is delivered and St John deliver emergency safety.



# Access & Mobility Forum

(Information prepared by Jane Tito)

Attached are the latest minutes.

C230-001-A01



## Access and Mobility Forum Meeting held at Marlborough District Council, 15 Seymour Street, Blenheim on Tuesday 5 December at 2.00pm

---

**Present:** Cllr Matt Flight (Co-Chair)  
Cllr Dalliessi (Co-Chair)  
Diane Gibb  
Lisa Wheeler  
Charlotte Campbell-Lamerton  
David Clode  
Ricky Shadbolt

**MDC Staff:** Robyn Blackburn (Road Safety Coordinator and Greypower)  
Bill East (Duty Building Control Officer)  
Linda Craighead (Parks and Open Spaces Planner)

**Attendance:** Leanne Stowell – Ministry of Social Development (MSD)

### 1. Welcome and Introductions

### 2. Apologies Received

Jane Tito, Jodie Griffiths, Fern McGaw and Paul Southey (post apology from Hularii)

### 3. Confirmation of the Previous Minutes

The minutes of the meeting held on 25 September 2023 were approved by Bill and seconded by Cllr Dalliessi.

### 4. Presentation by Leanne Stowell – Senior Case Manager at MSD

Leanne provided information on what is available from WINZ/MSD:

- Disability allowances are both income and asset tested and are available to anyone with on-going health issues
  - Can help to pay for extra costs with medical fees
  - Prescription costs (to be confirmed with the new Government)
  - Full travel costs for travel to and from home to doctors' appointments
  - Window cleaning, gardening, lawns – assessment required for inside house work
  - Fees can cover recreational and sport related costs if advantageous to health
  - Accommodation supplement for mortgages
  - Essential work required on the home e.g. Hole in the roof requirement repair
  - Major improvements covered by the relevant agencies
  - Combined income and assets are tested – the rates are on the MSD website.
  - Child Disability Allowance is for all children under the age of 18 who have extra needs.
- All decisions are reviewable. Any queries, please contact MSD.

5. **Matters Arising from the Previous Meeting**

1.	<b>Disability car parking spaces at Bay Audiology</b> Cir Flight has spoken to Bay Audiology but no further action required.	
2.	<b>Timing of locked doors on disability toilets</b> Can we extend the period of time on the disability toilets for them to be locked for 20 minutes? Linda will discuss with Grahame Smail. Also to discuss, the disability toilet in Picton being on a plinth	Linda Craighead
3.	<b>Problems with camber for manual wheelchair users on Queen Street and Francis Street.</b> The camber is within specification on Francis Street. Dianne suggested that the specifications need changing. The problem is for those in wheelchairs going up and down whereas cars can go up a bit steeper. Charlotte is working with the Transport Planner for Marlborough Roads but working with something that is 30 years old. Discussions are continuing.	
3.	<b>Compliance process for the new Kāinga Ora homes</b> Action Complete	
4.	<b>Specialist change facilities policy</b> Six submissions received with one person wanting to be heard which happened at the last Assets and Services Committee Meeting. Up-date will be provided on the outcome, in due course.	Linda Craighead
5.	<b>Pedestrian/mobility scooter access from the Taylor River shared pathway to the hospital.</b> This was discussed at the Marlborough Road Safety Action meeting and Marlborough Roads advised that this cannot be funded. Robyn and Hannah from Te Whatu Ora went to investigate this morning. Ideas for a temporary solution – funding through Changing Streets – were taken back to Te Whatu Ora. Robyn to survey the Group to find out what is needed.	Robyn Blackburn
6.	<b>Inviting new members to the group.</b> Action complete	
7.	<b>What is available from MSD to our community members living with mobility issues.</b> Action complete.	

8.	<b>Raising of all pedestrian crossings in Marlborough</b> Not going to happen due to cost of installation and on-going up-keep.	
9.	<b>Decision relating to mobility parking at the airport</b> Cllr Dalliessi and Diane carried out a site visit and met with Seve Holtum the Airport Manager. There are three designated mobility parks by the short term (30 minute) area which are a good size. In the two minutes drop off area there is only one access point so you would have to step into the roadway. If in a taxi, the ramp would take up two spaces. There are 10 disability parks in the long-term area. Recommendation to Council would be that the shuttle bus park should be a disability car park instead. Cllr Dalliessi to send further details, with maps and photos to Linda.	Cllr Dalliessi
10.	<b>Marlborough Walking and Biking Strategy</b> Charlotte provided an update. The new Coalition Government's 100-day plan includes funding being pulled on some major multi-modal plans. Charlotte recommends that trials are carried out for connectivity on urban streets but not sure what is going to be committed by Government.	
11.	<b>Large trucks parked on roadsides around Picton School</b> Charlotte provided an up-date. Because of the new Port development, the trucks are being directed down Kent Street to park whilst waiting to board the ferries. Charlotte is pushing for the safety of pedestrians and those that require access to that part of town. Richard Coningham will be aware of everything that is going on at the moment.	

## 6. General Business Including updates from:

### Marlborough Roads

No updates provided.

### Building Control Update – Bill East

- Things slowing down in residential areas with some companies looking to lay people off.
- Working on replacing staff/succession planning
- Work on the Summerset villas continues
- iRex project building work being approved
- Not a lot of work on the colleges at present
- The Code of Compliance on the Library has been issued
- Any alterations do require an asbestos report.

### Parks and Open Spaces Update – Linda Craighead

- Making sure all contractors are available over the holiday period and ensuring grass is mown to prevent fire risk.
- Vandalism is increasing including graffiti on public walls and damage and poisoning of trees
- Freedom camping numbers are increasing in the area.

## 7. Any Other Business

- Lisa Wheeler discussed riding on the top of the stop bank between Marshall Place and Snowden Crescent – as this is an issue for the Rivers Team, Linda will follow up with them and report back.
- Robyn distributed a pamphlet on the new parking permit information for disability parking and how/where can park. Some feedback has already been received on metered car parks and clarification in the pamphlet is required. Could include information on airport parking.
- Diane rang Council on 26 November to advise of a water pipe burst near the Fire Station and the repair was carried out very quickly. Well done!
- Dates for next meetings were agreed by Cllr Flight and seconded by Bill.

The meeting concluded at 3.52pm

### Actions from the Meeting

1.	Linda to discuss with Graham Smail the timing on public toilet doors.	Linda Craighead
2.	Specialist Change Facilities Policy – update on the submissions received.	Linda Craighead
3.	Questionnaire for Pedestrian/mobility scooter access from the Taylor River shared pathway to the hospital.	Robyn Blackburn
4.	Recommendation for disability car parking in the current shuttle bus area at Marlborough Airport.	Cllr Dalliessi
5.	Linda to discuss with the Rivers Team Lisa's query regarding riding on the top of the stop bank between Marshall Place and Snowden Crescent.	Linda Craighead

# Property and Community Facilities Projects Report

---

(Information prepared by Maighan Watson)

## Marlborough Hockey Turf and Pavilion – Marlborough Girls’ College, Nelson Street

Contractors Findlater Construction and Robinson Construction are both progressing well at the new home of Marlborough Hockey off Nelson Street. Findlater's with the construction of the hockey turf and associated car park, and Robinson's with the construction of the 2-storey hockey pavilion.

In the past few weeks subcontractor Tiger Turf have commenced the installation of the Ecocept base layer to the turf (Fig. 4). Subcontractor TC Nicholls have also begun laying base course material in the new car park (Fig. 1). The light towers were installed pre-Christmas and power supply connected mid-January. Over the next few weeks Tiger Turf will begin the installation of the artificial turf surface, whilst Findlater's will commence the landscaping and start the fit-out of the hockey dug-outs. Over at the pavilion, the blocklayer has completed the ground floor, the roof installation has commenced (Fig. 1), as has the glulam rafter and potius flooring installs.



Fig. 1 – Hockey Turf, car park construction.



Fig. 2 – Hockey Turf, south high ball fence completed.



Fig. 3 – Hockey Turf, Ecocept underlay installation.



Fig. 4 – Hockey Turf, Ecocept underlay installation.





Fig. 5 – Hockey Pavilion, roof installation underway.



Fig. 6 – Hockey Pavilion, roof installation underway.

### CBD Demolitions

The demolitions of the Millennium Art Gallery and 6 Russell Terrace were completed in December 2023. The contractors, Scope Group at the gallery and CMT Group at Russell Terrace, were both professional and efficient. The future of both sites will be finalised in the coming months.



Fig. 7 – 6 Russell Terrace, demolition complete.



Fig. 8 – Millennium Gallery, demolition complete.

### Senior Housing development - 85 George Street, Blenheim

Construction of the 2-storey, 12-unit Senior Housing development has moved to the second stage. On Stage 1 of the development (southern end) the blockwork is ongoing, with about 50% complete to date. T & D Construction have now installed all glazing, completed the first fixes for electrical and plumbing, and the installation of the gutters, downpipes and soffits. Over on Stage 2, framework is in place on the first storey, with the roof programmed to be lifted into place late January. The joinery install commenced mid-January, as did the insulation and the first fixes for electrical, plumbing and mechanical.



Fig. 9 – 85 George Street development, Stage 2



Fig. 10 – 85 George Street development, Stage 1



Fig. 11 – 85 George Street development, entrance



Fig. 12 – 85 George Street development, internal

## London Quay Precinct Upgrade, Picton

Detailed design continues for the London Quay rejuvenation project in Picton. Three themes for the redevelopment were identified; Improved connections from the ferry terminal and from the foreshore to the town centre, creating attractive places to eat and walk, and improving the pedestrian and vehicle experience in a shared road space. Over the next month staff and the RMMLA design team will review consenting requirements, lighting design and connections with the Town Wharf Basin. Following a review with local stakeholders, all parties were supportive of the pedestrian focused design, with soft landscaping, traffic calming as priorities.

Record No: 2415450