



Marlborough District Council Monitoring officer at Bowscale Tarn with the monitoring boat during the first visit to the lake in 2023

**Information Package**  
**Regulatory Department**  
**14 March 2024**

# Contents

<b>Environmental Science &amp; Monitoring .....</b>	<b>1</b>
<b>Biosecurity.....</b>	<b>1</b>
<b>Catchment Management .....</b>	<b>6</b>
<b>Environmental Science &amp; Monitoring .....</b>	<b>9</b>
<b>Alcohol Licensing.....</b>	<b>24</b>
<b>Special Licences .....</b>	<b>25</b>
<b>New Premises Licences.....</b>	<b>27</b>
<b>Renewed Premises Licences.....</b>	<b>27</b>
<b>Temporary Authority Premises Licences .....</b>	<b>28</b>
<b>New Manager Certificates.....</b>	<b>28</b>
<b>Renewed Manager Certificates.....</b>	<b>29</b>
<b>Compliance Group – Monitoring Update March 2024.....</b>	<b>30</b>
<b>Environmental Health Team Update – March 2024 .....</b>	<b>31</b>
<b>Resource Consents Section .....</b>	<b>34</b>
<b>Resource Consent Approvals Under Delegated Authority .....</b>	<b>35</b>



## Biosecurity

Reporting period: 12/01/2024 – 23/02/2024

(Report prepared by Liam Falconer, Brent Holms, Rob Simons and Jono Underwood)

### African feather grass

(E315-003-002-01)

Control and surveillance for African feather grass was completed in this period. A total of 15 sites were visited, eight of which were historical. A total of 46 plants were destroyed across six sites.



Figure 1. A patch of African feather grass found on Vernon Station

### Bathurst bur

(E315-003-003-01)

All active, monitoring, and historical sites were visited in February. A total of three plants were found at a single site, well below the RPMP target of 102 plants.

## **Chinese Pennisetum** (E315-003-010-01)

Council biosecurity staff visited all active and monitoring Chinese pennisetum sites and a third of the historical sites (a total of 26 sites). This year no plants were found, continuing a trend of low numbers of plants being found in recent years.

## **Cotton thistle** (E315-003-011-01)

A second round of cotton thistle control operations was carried out during this period. A total of 33 hours of work was undertaken and 157 plants destroyed. The majority of these were found at the Wairau Bar Road sites where earthworks were recently carried out.

## **Eel grass** E315-003-013-01)

Biosecurity staff visited the only active site at Waterlea Creek. No eel grass was found this year.

## **Giant needle grass** (E315-003-015-01)

Giant needle grass control work was carried out by biosecurity staff on on 22 January. A total of eight plants were destroyed over 13.5 hours. Plant numbers dropped significantly this year due to one of the main infestations becoming inaccessible. The area is now thick with Douglas-fir and blackberry.

## **Kangaroo grass** (E315-003-017-01)

The biosecurity team have continued with compliance inspections for sites subject to land occupier obligations to destroy kangaroo grass. No non-compliant properties have been identified.

Staff have also continued control work on sites subject to the service-delivery component of the programme, with a further 78 plants destroyed.

## **Mediterranean fanworm** (E315-003-019-01)

Throughout the summer months dive surveillance for Mediterranean fanworm has been undertaken throughout the Marlborough Sounds including the main vessel hub areas. From July through to February 1273 vessel hull checks have been undertaken.

No fanworm has been found during these vessel inspections.

There have been two detections of Mediterranean fanworm this summer in the Abel Tasman area and unfortunately these vessels had previously visited the Marlborough Sounds before being located. This serves as a good reminder that the Marlborough Sounds continue to be at significant risk of Mediterranean fanworm incursions from visiting vessels.

## **Moth plant** (E315-003-020-01)

Control and surveillance work on moth plant commenced in February. So far, 173 sites have been visited by staff with a total of 329 plants destroyed.

## **Reed sweet grass** (E315-003-026-01)

Biosecurity staff began the second round of reed sweet grass control in this period. Four sites were visited with three litres of herbicide mix applied. To note, herbicide mix is used as the programme output metric given plants numbers are unable to be accurately determined.

## **Saffron thistle** (E315-003-029-01)

A second round of saffron thistle site visits has now been completed. Eight sites were visited with 45 plants destroyed.

## Tall wheat grass

(E315-003-032-01)

Work was completed in this period for the sustained control programme for tall wheat grass. Contractors were engaged to assist with some of the heavier infestations this year. In total, 25 sites were visited with a total of 852 litres of herbicide mix used. To note, herbicide mix is used as the programme output metric given plants numbers are unable to be accurately determined.

## Wallabies

(E315-003-033-01)

A combined investigation with Nelson City Council is underway after a report of a wallaby being seen on the side of the road near the Nelson and Marlborough Boundary. So far there has been no sign seen to indicate presents of wallabies. A network of trail cameras are currently in place.

## Woolly nightshade

(E315-003-036-01)

Biosecurity staff completed all site visits for woolly nightshade in February. A total 21 sites were visited with 42 plants destroyed over 15.75 hours.

## Other Biosecurity Initiatives

### Biological control - Old man's beard

(E315-007-001-08)

Council biosecurity staff have just released old man's beard sawflies (*Monophadnus spinolae*) in the Awatere Valley in a bid to have some impact on this highly invasive pest plant.

Old man's beard sawflies were first imported by Manaaki Whenua Landcare Research in 1997 from central Europe but they did not establish readily. In 2018 a new population was imported which has grown successfully.

The larvae are the damaging life stage of the sawfly, feeding on the leaves. A single larva may eat several leaves, sometimes only leaving the central vein intact.



Figure 2. Biosecurity officer Brent Holms releasing old man's beard sawfly larvae at a site in the Awatere Valley



## Restoring & Protecting Flora Project (J4N KMTT) (E315-021-002-02, E315-005-030)

### Wild kiwifruit

The Jobs for Nature funded Restoring and Protecting Flora project has continued to help MDC biosecurity by undertaking early intervention control and surveillance work in the Marlborough Sounds; Two one-week working trips were undertaken during this reporting period to map and control infestations of wild kiwifruit in the Kenepuru sound near Whatanihi and Hopewell.

Seedling kiwifruit plants found at Rimu Bay was a sure indicator that this species is cross-pollinating and fully naturalised in some areas. Some very large plants have been found in areas not directly linked to a legacy planting which could indicate that the naturalisation process has been underway for some time. Without any future intervention the plant will exit its lag-phase and the rate of invasion/spread will increase exponentially.

The Biosecurity Team are working closely with Kiwifruit Vine Health NZ (KVH) to document control and surveillance data. This includes the location of infestations and the square metre area of kiwifruit canopy that has been controlled. Stem diameter of individual plants is also being recorded. KVH's National Operations & Compliance Officer Andrew McConnell said that individual vine diameter gives KVH valuable data into the age structure of wild populations providing insights into surveillance and management techniques. The data is also used model the wild population on a national scale.

An information letter was sent out by the Biosecurity Team to land occupiers with known cultivated kiwi fruit plants on their property to help foster public awareness of kiwifruit as an environmental weed species. The letter included pest practice guidelines from KVH that growers could implement to minimise the risk of their cultivated plant spreading into unwanted areas.





**Figure 3. A healthy kiwifruit seedling found near Whatanihi, Kenepuru**



**Figure 4. Flora Project Team Member Harry Manning swallowed up by a large kiwifruit vine near Hopewell.**



# Catchment Management

## Te Hoiere Project Update

E355-021-01-001

(Report prepared by Rachel Russell and Heli Wade)

### Background

Te Hoiere Restoration Project is a multi-partner project which aims to address land use derived issues alongside wider conservation goals. Marlborough District Council provides fund and project management for Te Hoiere Project.

### Update

#### Project Review

In November, a project review was held with members of the Trust and working group attending. This session was facilitated by Scarlatti. Discussion ranged from current projects to planning for the future of the project beyond current funding.

As a result of the review there are three sub-groups working on: future funding options, project structure and a logic model.

#### Trust

Interviews for a new Trust member were held on the 19<sup>th</sup> of February. This trustee will join the three current trustees.



Figure 1: A recent field day in Linkwater with members of the Trust and Working Group, Pete Hamill (MDC) talking about the benefits of riparian planting for native fish and invertebrates.



## Mitigation Actions & Restoration Activities

This year 61,000 plants were planted along riparian margins and in wetlands across Te Hoiere/Pelorus. This brings the total number of plants established since the inception of the project to 139,000, representing 53% of targeted planting for the project.

Maintenance of these plantings is now the primary focus for the next four months of the year. Our team are currently planning another round of planting in Autumn, budget allowing.

Riparian and wetland fencing has continued over the summer period and to date just under 7km has been completed. The annual target is 57km, much of which has been started and will be completed over the next few months. Overall, the project has now completed 55km of fencing of a targeted 197km (28%).

A culvert installation and fish passage workshop was held in December, this event attracted approximately 30 people from the local community and various organisations including Marlborough District Council, Landcare Trust, QEII Trust, MPI and Resource Consent advisors.



All mitigation work is becoming more expensive, with cost increases to both labour and materials. The project team are working to plan future planting and fencing projects under budget constraints.

Weed control is continuing at Ruapaka Wetland, this includes heli-spraying of willow and other invasive pest species. Once this is completed planting will continue in Autumn.

Water quality monitoring has continued in Linkwater catchment and the mitigation effectiveness monitoring across Te Hoiere has now started with support from the Environmental Monitoring team at MDC. Planning is underway for fish surveys and macroinvertebrate at the nine mitigation effectiveness sites.

A contract for the Mātauranga Māori objectives has now been signed with Ngāti Kuia, this contract supports work on cultural mapping, stream classification and monitoring work.

	<b>Project Target</b>	<b>Actual</b>	<b>% complete</b>
No. of km of fencing	197.5	54.91	28%
Area of weed control (ha) - site prep	54	33.37	62%
Area of weed control - Public Conservation Land (ha)	6	TBC	-%
Area of plant released (ha) - release	54	36	67%

	<b>Project Target</b>	<b>Actual</b>	<b>% complete</b>
No. of plants planted	263,392	139,383	53%
Area of wetland or riparian planting (ha)	79.7	49.38	62%
No. of people hours	253,057	61,550	24%
No. of fish passage barriers assessed	78	149	191%
No. of fish passage barriers remediated	39	1	3%
No. of site visits	-	335	
Area of Catchment Condition Survey completed (ha)	12,000	9.753	81%
No. of workshops	15	16	107%
No. of dung beetle packs released	50	17	34%
No. of culturally significant areas protected/restored	3	1	33%

A contract was signed with Top of the South Wood Council in December. TOTSWC will be responsible for five forestry related projects in Te Hoiere including a forestry access and database, land transition scoping, riparian pilot, ungulate exclusion pilot and sediment loading.

A training day for the Ngā Awa Te Hoiere Fish Distribution Survey, a collaborative project between DOC, MDC and Ngāti Kuia, was held in February with consultants Olleyecology. This survey started in mid-February at 19 sites in Te Hoiere and will build our knowledge of native fish distribution.

A number of other sub-projects are underway in collaboration with project partners, including Kanakana (lamprey) pheromone sampling, Nature Based Solutions and Groundwater Study. All of this work contributes to understanding Te Hoiere catchment.





## **Native nursery at Titiraukawa (led by Ngāti Kuia)**

A site blessing was held on the 22 January prior to the commencement of civil work. Building work is now underway.

## **Bat project, predator and weed control on PCL (led by Forest & Bird)**

Bat monitoring finished in mid-February.

Predator control -

- New Predator Pest Team Lead Engaged
- Predator control at Pelorus Bridge continued
- Predator traps now "seasoned" at Carluke and Ronga and pre-feeding completed over Christmas
- Application for toxin permit underway
- Mears Contracting will be engaged to help with toxin work

Weed control -

- Carluke – two weed species being targeted. German Ivy now eliminated. Spraying of Tradescantia has started with good early results.
- Ronga Reserve – grass growth in reserve is making plant site prep difficult, looking to get planting area grazed to make it easier.
- Pelorus Bridge – Completed Cherry Laurel control
- Brown River – grid search for wilding pin now targeted for Q3 of this year

## **Educational Resources/Community Engagement**

There are now four Catchment Coordinator working alongside Wendy Sullivan (NZLT).

Development of Seed Collection Calendar is nearly complete, this work has been supported by Dan Moore, Wendy Sullivan (NZLT) and Steph Flores with guidance from experts from DOC and MDC.

Te Hoiere website (tehoiere.org.nz) has had 1000 unique visitors since going live in October

A reporter from RNZ Country Life visited Te Hoiere in early February, he met with the Morrisons and the Frosts in Linkwater to talk about their catchment group and involvement with the Project. We expect this to air in March.

Recent community workshops on wasp control and dung beetles were completed. Two seed propagation workshops are being held in March, these workshops follow on from previous seed collection workshops.

Our recent newsletters are available on our website:

<https://www.tehoiere.org.nz/news-events/newsletters>

## **Environmental Science & Monitoring**

(Reports prepared by Steffi Henkel)

### **River and Stream Monitoring Update**

**(E375-003-001)**

To evaluate the health of Marlborough's rivers and streams, waterways are regularly monitored at strategic sites. Regular review of the monitoring site network is crucial to ensure that the data collected serves the program's purpose.

A comprehensive review conducted in 2006/2007 led to significant changes in the monitoring program. These changes included increasing the monitoring frequency from annual or quarterly to monthly, as well as expanding the number of monitored sites. Since 2007/2008, river water quality has been monitored at 35 sites across the region on a monthly basis.

A preliminary review of the Surface Water Quality Programme ten years later, in 2017, identified that additional monitoring sites are required for effective management of surface water resources as large areas of the region are lacking sufficient water quality information. Additionally, land use changes and intensifications had occurred that were likely not anticipated when the monitoring network was originally designed.

Consequently, a review of the river water quality monitoring network was conducted in 2020 to ensure representative coverage of river health across the Marlborough region. The review also aimed to establish additional monitoring to meet the requirements of the National Policy Statement for Freshwater Management.

Following the 2020 review, 19 additional sites have been gradually incorporated into the network over the past three years. This year, the remaining three sites will be added to the program, completing the new monitoring network.

The map below (Figure 1) shows the division of the region into river monitoring units based on catchment and sub-catchment characteristics such as geology, hydrology, and land use. The associated monitoring sites are also depicted.

Only a small area in the far south of the region remains unmonitored (grey area in Figure 1). This area primarily consists of inaccessible small tributary streams within the Clarence River mid-catchment, which spans both the Marlborough and Canterbury regions. MDC's monitoring network now includes the Acheron River, a tributary of the Clarence River, covering most of the Marlborough region. Environment Canterbury monitors two sites on the Clarence River itself, providing sufficient data from both regional authorities to characterize river health for the Clarence catchment.

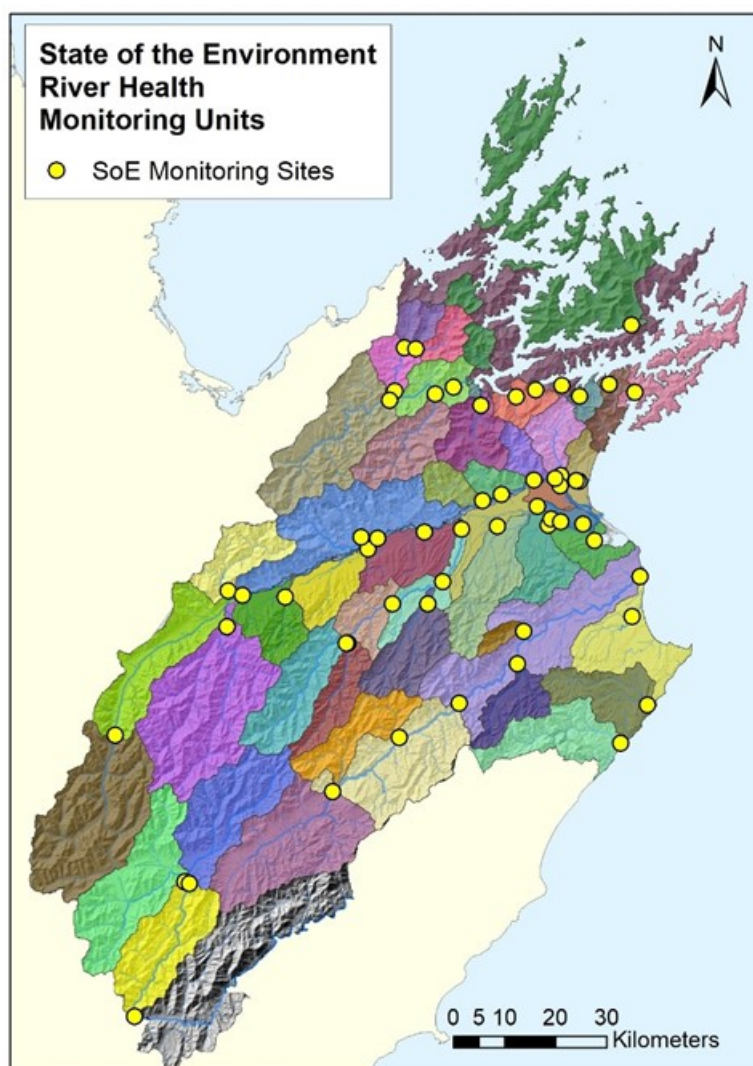


Figure 1: State of the Environment River Health Monitoring units and sites.



## Lake Monitoring Update

(E375-003-001)

A second round of monitoring for the remote lakes, Lake McRae and Bowscale Tarn, is scheduled to be completed in early March. Due to the necessity of helicopter access and associated costs, regular monitoring of these lakes is not feasible. However, anthropogenic pressures on these lakes are relatively low and the data collected from the second monitoring run will provide sufficient information to characterise the health of these lakes.



**Figure 2: Monitoring officer Darren Rooney at Bowscale Tarn with the monitoring boat during the first visit to the lake in 2023.**

Two of Marlborough's lakes accessible by road, Lake Elterwater and Grovetown Lagoon have been monitored monthly since the beginning of 2022.

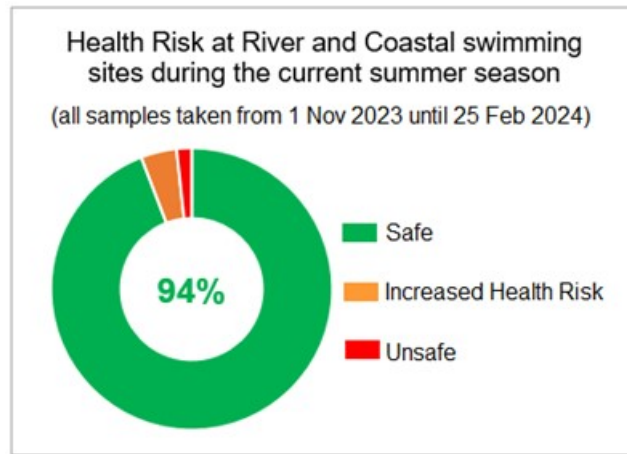
The first-ever Lake Health State of the Environment report, summarizing findings from the new lake monitoring program, is scheduled to be presented to the Environment Committee later this year.

## Recreational Water Quality Update

(E370-005-001)

Every summer, the risk to swimmers from waterborne diseases is monitored from November until the end of March. This summer, 19 river and coastal sites are being monitored. Health risk assessment involves analysing indicator bacteria concentrations in weekly samples from these sites. Generally, indicator bacteria concentrations and associated health risks are highest during rainfall but remain elevated for one to two days after rainfall ceases.

The relatively dry weather during this summer season has meant that 94% of the 292 samples taken thus far have shown a low health risk to swimmers (**Figure 3**).



**Figure 3: 94% of samples taken during the 2023/24 summer season so far have shown low concentrations of indicator bacteria representing a low health risk to swimmers from waterborne diseases.**

The results of the monitoring can be viewed by the public on the LAWA website ([www.LAWA.org.nz](http://www.LAWA.org.nz)) with the latest results becoming available shortly after they are received from the laboratory.

## Toxic Algae in Rivers and Streams (E370-005-001)

In addition to waterborne diseases, swimmers dipping into rivers face risks from toxic algae. The primary concern in New Zealand rivers is *Microcoleus* (formerly *Phormidium*), which forms dark brown mats on river and stream beds. While some toxin is released into the water, concentrations are generally low and pose minimal risks. The greatest danger to humans, particularly small children, and animals arises from accidental ingestion of the algae mats. Dogs, attracted to the musky smell of the algae, are particularly vulnerable, with even a small amount proving lethal. Several dog deaths have been reported in the Nelson/Tasman and Wellington regions.

The algae occur naturally across a wide range of rivers and stream across New Zealand and algae cover is mainly reduced by flood flows, when higher water velocity shifts the stream bed. Hence, prolonged dry weather, such as experienced this summer, can lead to dangerously high toxic algae cover.

A significant increase in toxic algae presence was observed in the Rai River early in the summer season. Thus, on 22 December 2023 a media statement ([link](#)) was issued urging the public to watch for toxic algae.

Toxic algae cover further increased at the Rai Falls, but also reached critical levels in the Omaka River at the start of the year. Warning signs were erected at both sites and another Media statement was released on 18 January 2024 ([link](#)). Fortunately, other swimming spots, like those on the Wairau and Te Hoiere/Pelorus Rivers, have not seen significant toxic algae cover this summer.



**Figure 4: Toxic algae in the Omaka River and Toxic algae warning sign at the Lions Reserve.**



While warning signs are now posted at sites with known significant toxic algae cover, it's likely that other stream and river stretches have prolific toxic algae. This was underscored in the December media statement, with another release planned for March to remind the public to stay vigilant regarding toxic algae.

The MDC website features a video and pictures to aid in identifying the algae:  
<https://www.marlborough.govt.nz/recreation/swimming-and-boating/toxic-algae>

(Report prepared by Charlotte Tomlinson)

## Water Resources Update January 2024

(E320-001-001)

Data from the Marlborough District Council's Environmental Monitoring network was primarily used in preparing this report and supplemented with data from the Marlborough Research Centre, MetService, NIWA, and FENZ.

### Executive Summary

January marked the eighth consecutive month to record below average rainfall in Blenheim, with 6.6 mm recorded for the month. Total rainfall from June 2023 to the end of January 2024 is 194 mm, 45% of the long-term average of 436 mm. This is the lowest rainfall total for any June to January period over 94 years of record (1930-2024).

Rainfall was below average throughout the region, with Picton recording 26 mm of rainfall in January, about half of the average January rainfall. Awatere at Awapiri recorded 9 mm of rain for the month, compared to an average of 52 mm.

River flows were below average across the board in January, with a number of water restrictions now in place. In the Awatere River Class C water restrictions were in place at the beginning of the year, and Class B water takes were rationed from the twentieth before full Class B restrictions began in the last week of January. In the Wairau River, Class C restrictions were in place from the 9 January onwards. Rain in the upper catchment helped to maintain river flows in the second half of the month preventing further restrictions.

With minimal rainfall average shallow soil moisture at the Grovetown Park site in Blenheim remained low throughout January, with an average of 15.1%. This is well below the long-term average of 20.8%.

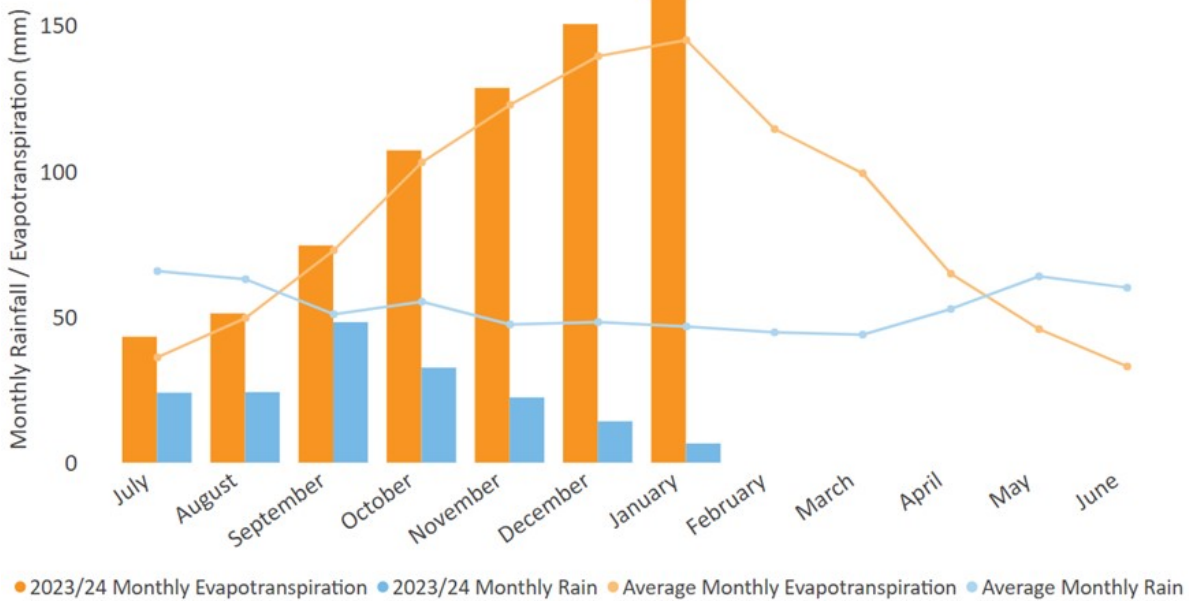
Textbook El Niño weather is expected in February with enhanced westerlies and persistent high pressure across northern New Zealand, and regular fronts moving through south of the high. Temperatures are very likely to be above average in Marlborough although varying throughout the month, while rainfall may be below average especially further to the east. The tropics remain active throughout February, but the current outlook sees tropical cyclones keeping well north of New Zealand.

As of the 5 February the New Zealand Drought Index (NZDI) is showing both northern and southern Marlborough as 'extremely dry' with values of 1.3 and 1.4 respectively. An NZDI value of 1.5 or greater indicates climatic drought conditions.

It would be fair to say that localised meteorological drought is occurring in pockets of the region and may intensify throughout February. The NIWA drought forecast map shows there is a risk in the drier scenario of more widespread drought occurring in parts of the Wairau Plains, Awatere, and East Coast over the next 35 days. Stay up to date with the latest predictions at <https://shiny.niwa.co.nz/drought-forecast>.

### Rainfall

Low rainfall continued in January with Blenheim recording just 6.6 mm of rainfall, 16% of the long-term average. The total moisture deficit at the Marlborough Research Centre in January was -159 mm, 152% of the long-term average. Monthly rainfall and evapotranspiration for the 2023/24 hydrological year can be seen below in Figure 1.



**Figure 1. Monthly rainfall and evapotranspiration in Blenheim (Marlborough Research Centre) for the 2023-24 hydrological year, compared to average monthly totals.**

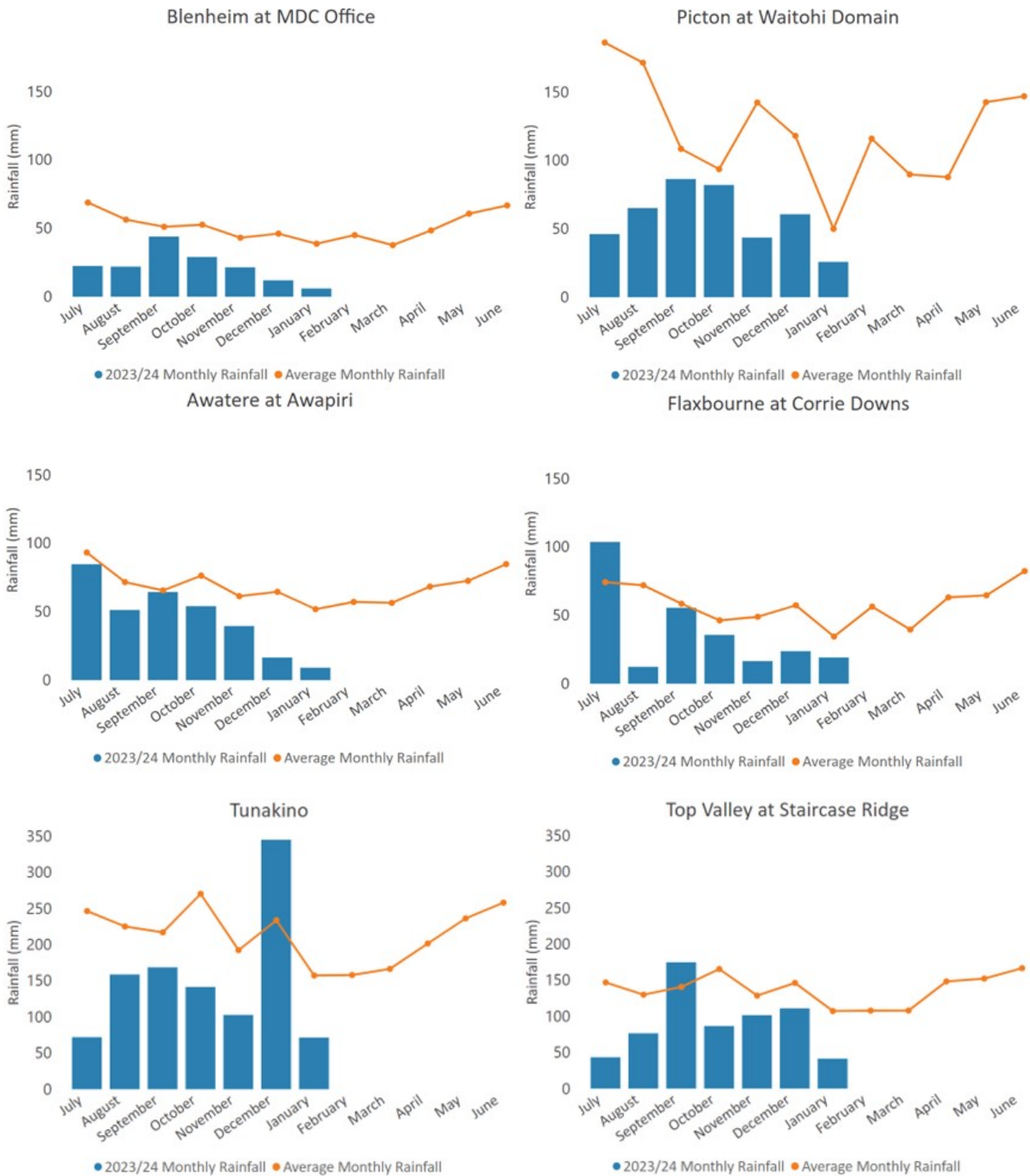
In the 8 months from June 2023 to January 2024 Blenheim has recorded lower than average rainfall every month. Total rainfall was 194 mm, just 45% of the long-term average of 436 mm. This is the lowest rainfall total for this 8-month period over 94 years of rainfall record (1930-2024). The previous lowest total was 227 mm recorded over the same 8-month period in 1933/34.

Figure 2 shows rainfall from 6 key sites around the region. Picton received 26 mm of rain in January, about half of the average January rainfall. The Rai Valley area also recorded around 50% of average January rainfall, with 70 mm recorded at Rai Falls.

9 mm of rain was recorded at the Awatere at Awapiri site in January, which is 17% of average January rainfall. Wairau Valley at Southwold recorded 25% of average monthly rainfall, with 17 mm recorded in January.

A full list of monthly rainfall totals for the 2023/24 hydrological year at all sites can be seen in Table 1.





**Figure 2. Monthly rainfall totals for the 2023-24 hydrological year from 6 key sites around Marlborough, compared to average monthly rainfall totals. Note the adjusted scale for the Tunakino and Top Valley sites.**

**Table 1. Monthly rainfall totals (mm) for the 2023-24 hydrological year at monitoring sites in Marlborough.**

Site	July	August	September	October	November	December	January
Awatere at Awapiri	85	51	64	54	40	17	9
Awatere Glenbrae NRFA	44	18	53	48	20	24	16
Beneagle at Farm Stream	49		59	44	29	37	11
Blenheim at MDC Office	23	22	44	29	22	12	6
Branch at Branch Recorder	37		128	84	53	90	
Branch at Mt Morris	34	70	215	188	106	176	74
Flaxbourne at Corrie Downs	104	12	56	36	17	24	19
Kaituna Rainfall at Higgins Bridge	41	76	116	121	45	104	39
Kenepuru Head NRFA	62	130	135	142	68	128	36
Koromiko NRFA	46	79	117	103	53	76	47
Lake Elterwater Climate	97	12	59	39	20	30	17
Lansdowne NRFA	46	64	80	45	42	18	14
Malings	56	101	227	239	59	129	81
Mid Awatere Valley NRFA	39	38	50	37	28	21	5
Molesworth NRFA	41	38	72	62	35	15	18
Omaka at Ramshead Saddle	44	52	72	50	58	52	14
Onamalutu at Bartletts Creek Saddle	68	156	175	104	58	89	41
Onamalutu at Hilltop Road NRFA	48	96	175	119	53	126	53
Picton Climate at Waitohi Domain	46	65	86	82	44	61	26
Pudding Hill NRFA	54	39	77	81	47	16	27
Rai at Rai Falls	44	119	234	183	102	273	70
Rai Valley NRFA	50	128	180	163	101	312	67
Rarangi at Driving Range	31	52	63	71	24	18	26
Red Hills	36	49	161	113	79	90	62
St Arnaud NRFA	57	70	120	125	97	146	79
Taylor at Taylor Pass Landfill	40	27	47	39	22	13	8
Taylor at Tinpot	85	48	112	58	49	49	14
Te Rapa	174	19	84	55	53	52	43
Top Valley at Staircase Ridge	43	77	175	87	102	111	42
Tor Darroch NRFA	47	61	114	100	89	71	52
Tunakino	72	159	169	142	103	345	72
Upper Clarence NRFA	106	31	50	37	49	10	6
Waihopai at Craiglochart	26	55	60	38	56	13	12
Waihopai at Spray Confluence	38	65	101	58	75	35	28
Waikakaho	49	57	73	71	35	32	24
Waikawa at Boons Valley	61	69	124	109	82		
Wairau Valley at Southwold	51	75	80	48	42	27	17
Wakamarina at Twin Falls	44	104	176	198	95	205	78
Ward NRFA	136	18	55	41	26	31	24
Wye at Charlies Rest	35	68	113	83	68	53	24



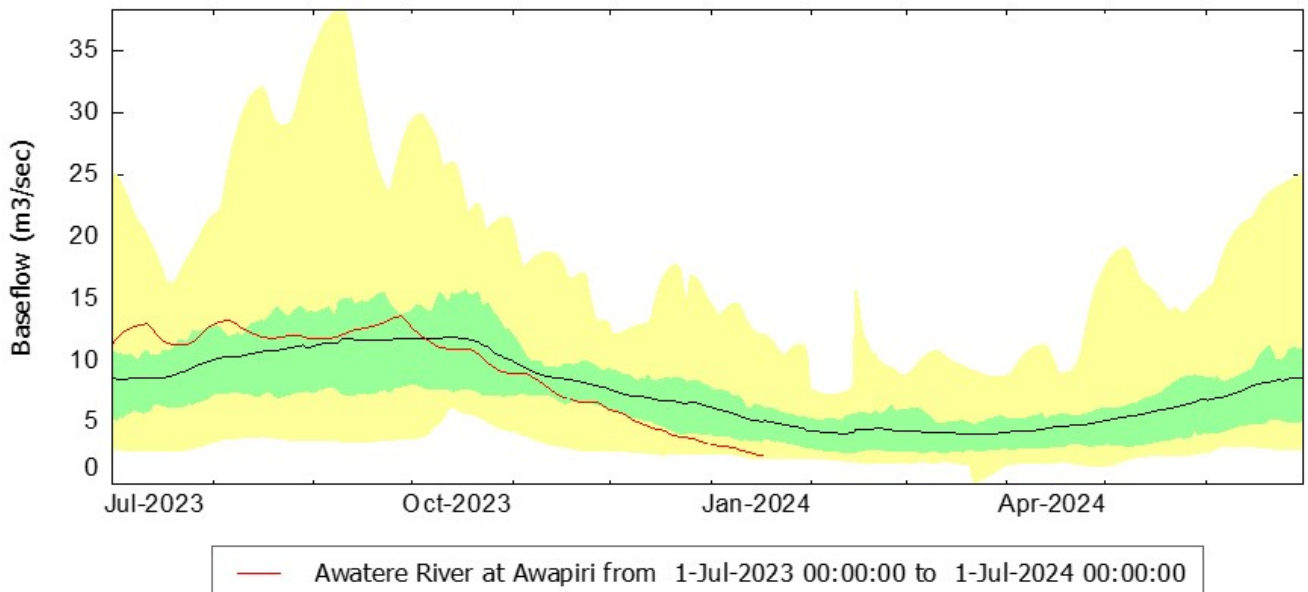
## River Flows

Below-average river flows continued across the board in the first month of 2024. The Wairau River at Tuamarina had a mean flow of just over 30 m<sup>3</sup>/s in January compared to the long-term mean of 70 m<sup>3</sup>/s. While flows were still below average in the north-west, they were the highest in the region relative to average, with the Rai River at 75% of average January flow and the Pelorus at 53%. With prolonged dry conditions rivers in the south-east were well below their average flows for January, with the Awatere River at Awapiri at just 33% of the mean January flow. A summary of river flows for January 2024 can be seen below in Table 2.

**Table 2. A summary of river flows in Marlborough for January 2024.**

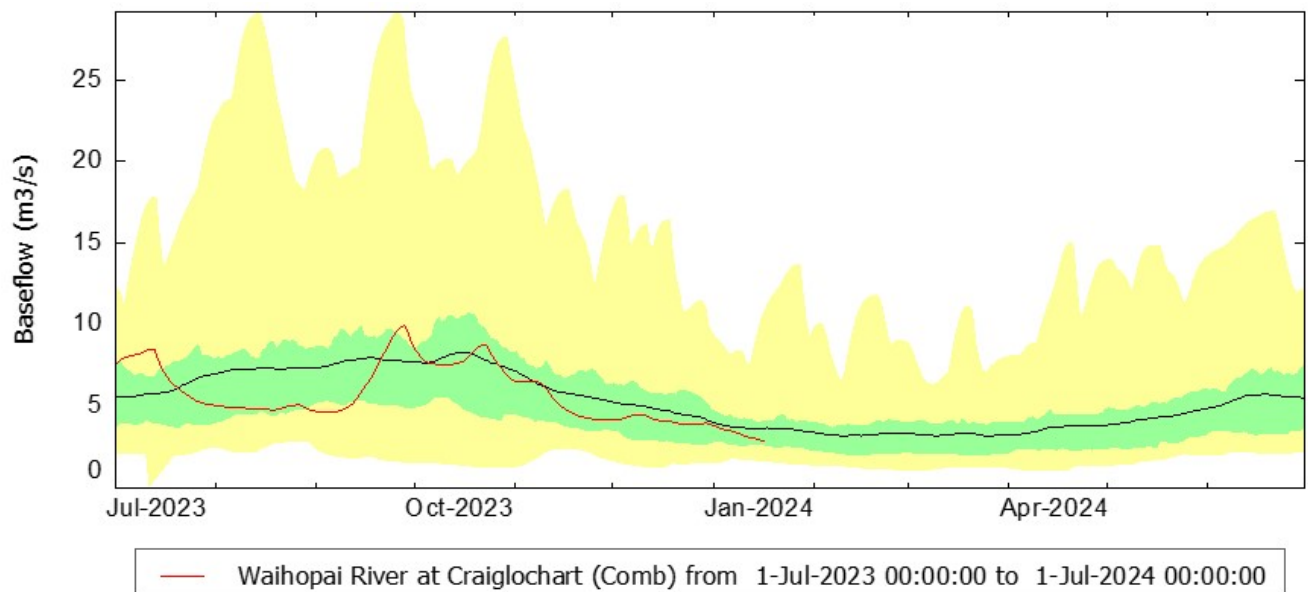
Site Name	January Mean Flow (m <sup>3</sup> /s)	January Long-Term Mean Flow (m <sup>3</sup> /s)	% of long-term mean	Flow Record Begins	Catchment Area (km <sup>2</sup> )
▲					
Rai River at Rai Falls	5.40	7.25	75	1979	211
Pelorus River at Bryants	7.25	13.64	53	1977	375
Kaituna River at Higgins Bridge	0.99	1.63	61	1989	135
Branch River at Weir Intake	8.08	19.68	41	1958	551
Goulter River at Horseshoe Bend	2.87	5.15	56	2010	154
Waihopai River at Craiglochart	3.96	9.14	43	1960	745
Ohinemahuta River at Domain	0.08	0.39	21	2013	33
Are Are Creek at Kaituna Tuamarina Track	0.13	0.19	66	2007	32
Tuamarina River at Para Road	0.27	0.54	50	2004	100
Wairau River at Tuamarina	30.44	69.85	44	1960	3430
Omaka River at Gorge	0.20	0.54	37	1993	91
Taylor River at Borough Weir	0.03	0.21	15	1961	65
Flaxbourne River at Corrie Downs	0.01	0.07	21	2003	71
Awatere River at Awapiri	3.13	9.49	33	1977	983

The baseflow in the Awatere River at Awapiri has been in the lower quartile since early December and continued to decline throughout January, almost reaching the lowest level ever recorded at this time of year in the last week of the month (see Figure 3). In terms of water restrictions the month began with Class C water restrictions in place, and apart from a small fresh in the first week of the month continued to decline. Class B water users were rationed to a percentage of their total water take volume from 20 January before full Class B restrictions began in the last week of January.



**Figure 3. Awatere River at Awapiri baseflow, from 1 July 2023 to 30 June 2024. The black line is average baseflow and the red line is the 2023 baseflow. The green section is the middle 50% of data and the yellow sections show the upper and lower quartiles.**

The Waihopai River at Craiglochart had mean flow of 4 m<sup>3</sup>/s in January, which is just under half of the long-term mean flow for January. Baseflow is in the lower 50% of long-term data at the end of January, with Class C restrictions in place from the 11 January through to the end of the month (with brief exceptions due to small flushes down the river, both rainfall derived as well as hydropeaking from the upstream dam). Waihopai baseflow can be seen below in Figure 4.



**Figure 4. Waihopai River at Craiglochart baseflow, from 1 July 2023 to 30 June 2024. The black line is average baseflow and the red line is the 2023 baseflow. The green section is the middle 50% of data and the yellow sections show the upper and lower quartiles.**

Baseflow in the Wairau River at Tuamarina declined in the first week of January, then remained steady throughout the rest of the month (See Figure 5 below). Class C restrictions were in place from the 9 January onwards. In the second half of January, rain in the upper catchment maintained river flows, preventing further restrictions and briefly lifting Class C restrictions.



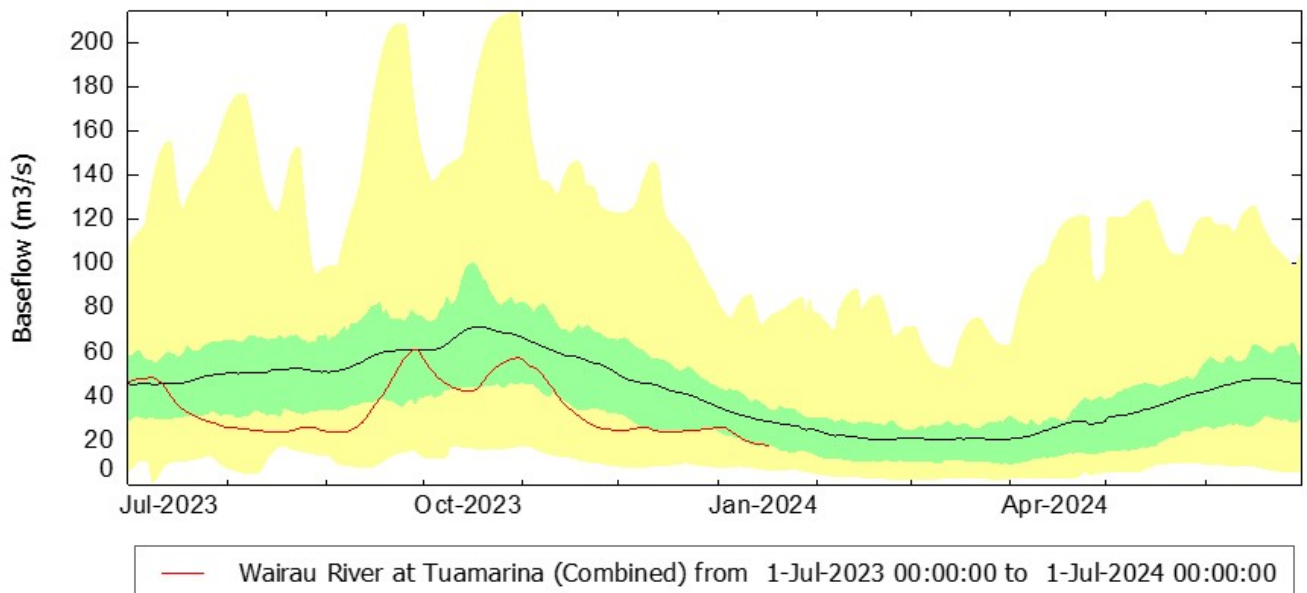


Figure 5. Wairau River at Tuamarina baseflow, from 1 July 2023 to 30 June 2024. The black line is average baseflow and the red line is the 2023 baseflow. The green section is the middle 50% of data and the yellow sections show the upper and lower quartiles.

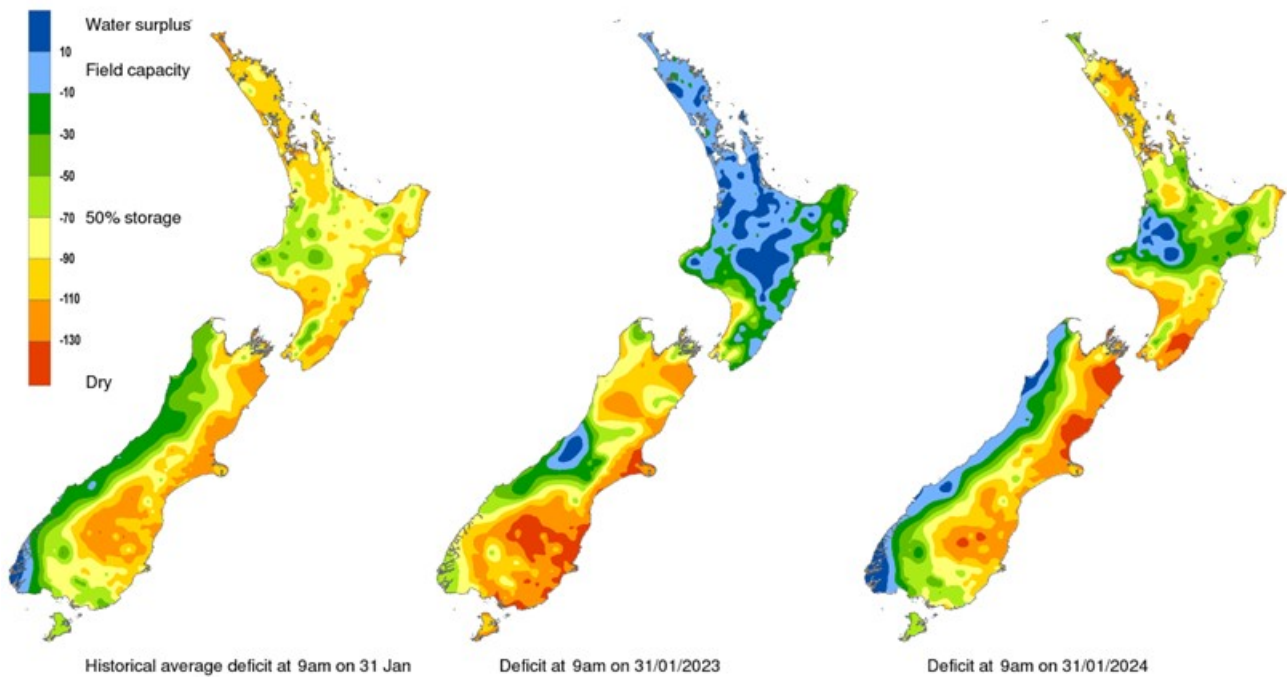
### Soil Moisture

Average shallow soil moisture at the Grovetown Park monitoring site was 15.1% for January which is well below the long-term average of 20.8%. Without any rainfall of note, shallow soil moisture remained low throughout the month.



Figure 6. Shallow soil moisture from 1 December 2023 to 31 January 2024

## Soil moisture deficit (mm) at 9am on 31/01/2024



**Figure 7. Soil moisture deficit maps of New Zealand, retrieved from NIWA on 31/01/2024**

The soil moisture deficit map (right-hand map in Figure 7) shows soils are very dry on the Wairau Plains and to the south-east, as well as in the outer Marlborough Sounds. Soils are drier than the historical average and the same time last year (left and centre maps in Figure 7 respectively). The soil moisture anomaly map (Figure 8) shows soils are moderately drier than normal for this time of year.

Soil moisture anomaly (mm) at 9am on 31/01/2024

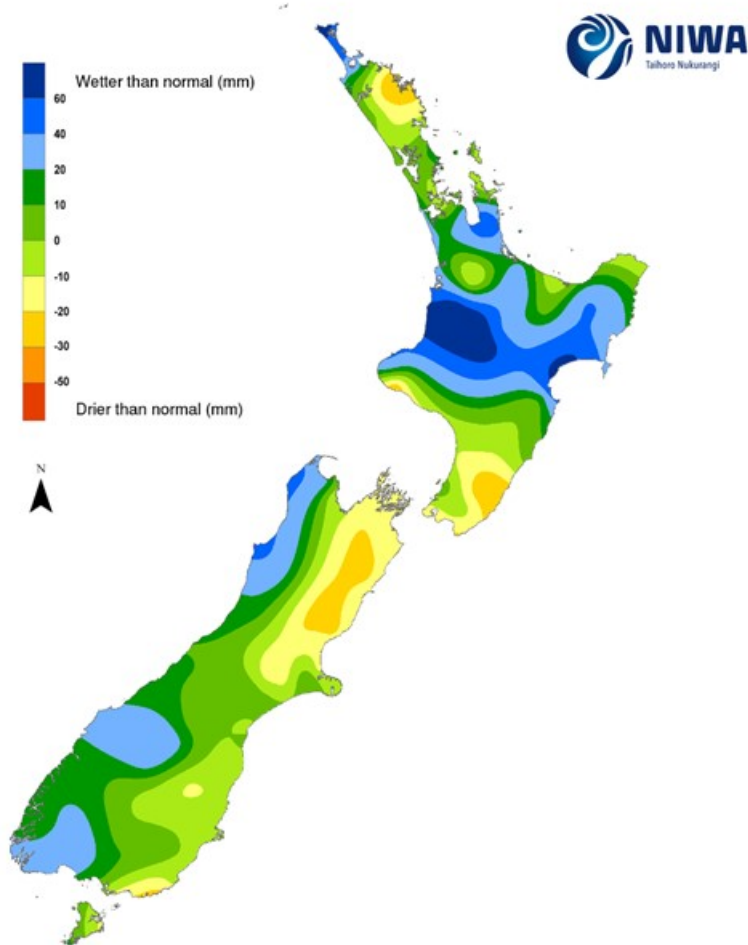


Figure 8. Soil moisture anomaly map of New Zealand, retrieved from NIWA 31/01/2024

### Climate Outlook February to April 2024

The tropics remain active throughout February, but tropical cyclones should keep north of New Zealand as we saw with tropical cyclone Kiriilly in January. Textbook El Niño weather is expected in February, with enhanced westerlies and persistent high pressure across northern New Zealand, and regular fronts moving through south of the high.

For Marlborough temperatures are very likely to be above average (although varying throughout the month), while rainfall could be below average especially to the east. Localised meteorological drought is occurring in south-east parts of the region and may intensify throughout February.

The New Zealand Drought Index uses four common drought indicators to indicate how dry an area is: the Standardised Precipitation Index, the Soil Moisture Deficit, the Soil Moisture Deficit Anomaly, and the Potential Evapotranspiration Deficit. As of the 5 February the NZDI values are 1.3 for Northern Marlborough, and 1.4 for Southern Marlborough, classifying both areas as 'Extremely Dry' (see Figure 9). An NZDI value of 1.5 or above is classified as meteorological drought. Stay up to date with current conditions at <https://niwa.co.nz/climate/information-and-resources/drought-monitor>.



New Zealand Drought Index (NZDI)  
 Date: 2024-02-05

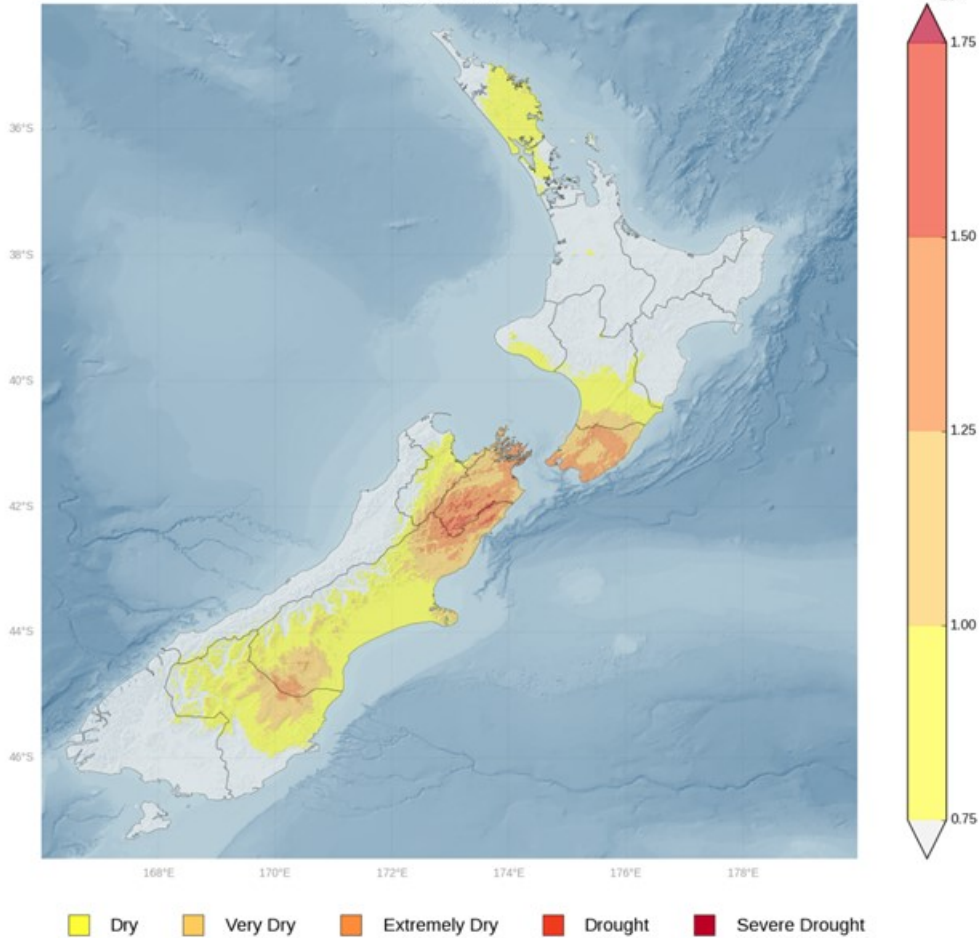


Figure 9. The New Zealand Drought Index (NZDI) retrieved from NIWA on the 5 February 2024.

The NIWA35 map shows that in the drier scenario (right-hand map in Figure 10 below) there is a risk of drought occurring in areas of the Wairau Plains, Awatere, and further south over the next 35 days. Stay up to date with the latest predictions at <https://shiny.niwa.co.nz/drought-forecast>.

**NIWA35**  
**Risk of areas experiencing dryness or drought within 35 days**  
**Model initiation: 00 UTC Mon 05/02/2024**  
**Valid: 01 PM Mon 05/02/24 - 01 PM Sun 10/03/24 NZDT**



"Dryness" refers to the categories of "Very Dry" and "Extremely Dry" in the NZDI categorisation. "Drought" refers to the categories of "Drought" and "Severe Drought" in the NZDI categorisation.

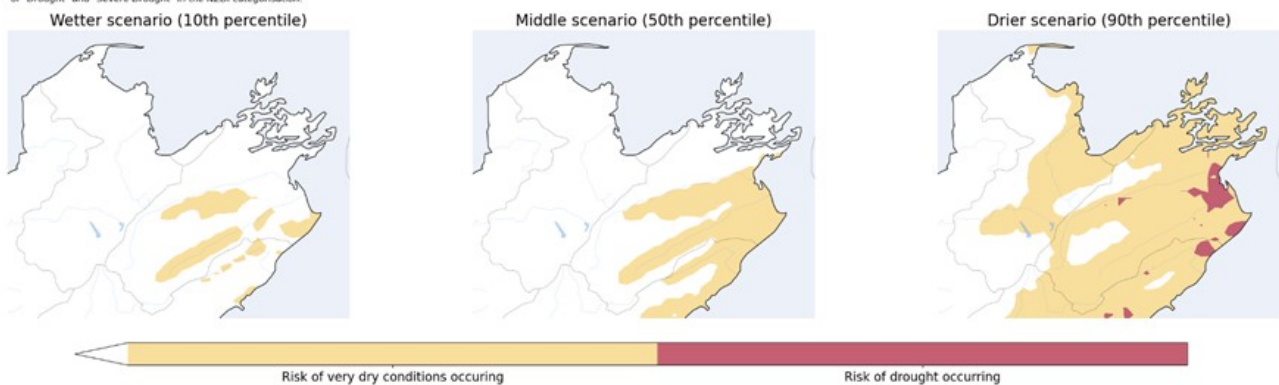






Figure 10. Marlborough/Nelson/Tasman risk of areas experiencing dryness or drought within 35 days, from the 5 February to the 10 March 2024. Retrieved from NIWA on 7 February 2024.

The predictions for Marlborough/Tasman from February to April are:

 Temperature – above average

 Rainfall – near or below average

 Soil Moisture – near or below average

 River Flows – below average

# Alcohol Licensing

---

**A100-04**

**Attached** is a schedule of applications for alcohol licences issued by Marlborough District Licensing Committee under delegated authority from 11 January 2024 to 16 February 2024.



**Alcohol Licences issued by the Marlborough District Licensing Committee  
From 11 January to 16 February 2024**

**Special Licences**

<b>Licence Number</b>	<b>Applicant</b>	<b>Location</b>	<b>Event</b>	<b>Date/s</b>
SPC/001/2024	Blenheim Polo Club Inc	117 A Redwood Street, Blenheim	Polo Tournament	27-28 January 2024
SPC/002/2024	Lions Club Of Seddon Inc	SH 1, Ward	Flaxbourne A & P Show	24 March 2024
SPC/003/2024	Antmoore Brands Limited	10 Uxbridge Street, Renwick	Marlborough Wine and Food Festival 2024	10 February 2024
SPC/004/2024	Flaxbourne Collie Dog Trial Club	301 Ward Beach Road, Flaxbourne	Annual Local Dog Trial Event	09-10 February 2024
SPC/006/2024	Elizabeth Fay McKay	60 Nelson Street, Blenheim	Turn Up For Tyler	24 February 2024
SPC/007/2024	Marlborough Repertory Society Incorporated	12 Horton Street, Blenheim	Live theatre	24 February 2024
SPC/009/2024	Johnson Estate Limited	37 Lake Timara Road West, Waihopai	Wedding	24 February 2024
SPC/115/2023	Damian Ben Johnson	Campbells Road, Tuamarina	Tua Marina School Christmas Fair Fundraiser	19 November 2023
SPC/122/2023	Wither Hills Vineyards Marlborough Limited	10 Uxbridge Street, Renwick	Marlborough Wine and Food Festival 2024	10 February 2024
SPC/123/2023	The Alchemist Limited	10 Uxbridge Street, Renwick	Marlborough Wine and Food Festival 2024	10 February 2024
SPC/124/2023	Lawson's Dry Hills Wines Limited	10 Uxbridge Street, Renwick	Marlborough Wine And Food Festival 2024	10 February 2024
SPC/125/2023	Esses Wine Company Limited	10 Uxbridge Street, Renwick	Marlborough Wine And Food Festival 2024	10 February 2024
SPC/126/2023	Blank Canvas Wines Limited	10 Uxbridge Street, Renwick	Marlborough Wine and Food Festival 2024	10 February 2024
SPC/127/2023	Joval Family Wines Pty Limited	10 Uxbridge Street, Renwick	Marlborough Wine and Food Festival 2024	10 February 2024
SPC/128/2023	Kono NZ LP	10 Uxbridge Street, Renwick	Marlborough Wine and Food Festival 2024	10 February 2024
SPC/129/2023	EDR-H New Zealand Limited	10 Uxbridge Street, Renwick	Marlborough Wine and Food Festival 2024	10 February 2024
SPC/130/2023	Giesen Wines Limited (BHE)	10 Uxbridge Street, Renwick	Marlborough Wine and Food Festival 2024	10 February 2024
SPC/131/2023	Johnson Estate Limited	10 Uxbridge Street, Renwick	Marlborough Wine and Food Festival 2024	10 February 2024

<b>Licence Number</b>	<b>Applicant</b>	<b>Location</b>	<b>Event</b>	<b>Date/s</b>
SPC/132/2023	Scott Family Winemakers Limited	10 Uxbridge Street, Renwick	Marlborough Wine and Food Festival 2024	10 February 2024
SPC/133/2023	Forrest Wines Limited	10 Uxbridge Street, Renwick	Marlborough Wine and Food Festival 2024	10 February 2024
SPC/134/2023	The South Sea Catering Company Limited	10 Uxbridge Street, Renwick	Marlborough Wine and Food Festival 2024	10 February 2024
SPC/135/2023	Clos Henri Limited	10 Uxbridge Street, Renwick	Marlborough Wine and Food Festival 2024	10 February 2024
SPC/136/2023	Mount Riley Wines Limited	10 Uxbridge Street, Renwick	Marlborough Wine and Food Festival 2024	10 February 2024
SPC/137/2023	Marlborough Wine Limited	10 Uxbridge Street, Renwick	Marlborough Wine and Food Festival 2024	10 February 2024
SPC/138/2023	Negociants New Zealand Limited	10 Uxbridge Street, Renwick	Marlborough Wine and Food Festival 2024	10 February 2024
SPC/139/2023	Rose Family Estate T/A Wairau River Wines	10 Uxbridge Street, Renwick	Marlborough Wine and Food Festival 2024	10 February 2024
SPC/140/2023	Babich Wines	10 Uxbridge Street, Renwick	Marlborough Wine and Food Festival 2024	10 February 2024
SPC/141/2023	Cloudy Bay Vineyards Limited	10 Uxbridge Street, Renwick	Marlborough Wine and Food Festival 2024	10 February 2024
SPC/142/2023	Villa Maria Estate Ltd (BHE)	10 Uxbridge Street, Renwick	Marlborough Wine and Food Festival 2024	10 February 2024
SPC/143/2023	EP Wines Limited	10 Uxbridge Street, Renwick	Marlborough Wine and Food Festival 2024	10 February 2024
SPC/144/2023	Yealands Estate Wines Limited	10 Uxbridge Street, Renwick	Marlborough Wine and Food Festival 2024	10 February 2024
SPC/145/2023	Hunter's Wines (NZ) Limited	10 Uxbridge Street, Renwick	Marlborough Wine and Food Festival 2024	10 February 2024
SPC/146/2023	Accolade Wines New Zealand Limited	10 Uxbridge Street, Renwick	Marlborough Wine and Food Festival 2024	10 February 2024
SPC/147/2023	Two Rivers Marlborough Limited	10 Uxbridge Street, Renwick	Marlborough Wine and Food Festival 2024	10 February 2024
SPC/148/2023	Tupari Wines Limited	10 Uxbridge Street, Renwick	Marlborough Wine and Food Festival 2024	10 February 2024
SPC/149/2023	Landon-Lane/Janssen Family Vineyard	10 Uxbridge Street, Renwick	Wine & Food Festival 2023	10 February 2024
SPC/150/2023	Riverby Estate Limited	10 Uxbridge Street, Renwick	Wine & Food Festival 2023	10 February 2024
SPC/151/2023	Rock Ferry Wines Limited	10 Uxbridge Street, Renwick	Marlborough Wine and Food Festival 2024	10 February 2024

Licence Number	Applicant	Location	Event	Date/s
SPC/152/2023	Marisco Vineyards Limited (REN)	10 Uxbridge Street, Renwick	Marlborough Wine and Food Festival 2024	10 February 2024
SPC/154/2023	Socially Good Enterprises Limited	10 Uxbridge Street, Renwick	Marlborough Wine and Food Festival 2024	10 February 2024
SPC/155/2023	Picton Little Theatre Incorporated	9 Dublin Street, Picton	Drama, musical and members evenings	04 February – 22 November 2024
SPC/156/2023	Two Rivers Marlborough Limited	311 Brookby Road, Hawkesbury	Brookby Beats	09 February 2024
SPC/157/2023	Havelock Mussel Festival Incorporated	Havelock Quay, Havelock	2024 Havelock Mussel Festival	16 March 2024
SPC/158/2023	Woodbourne 2010 Limited	80 High Street, Renwick	Wine & Food After Party	10 February 2024
SPC/160/2023	Eradus Wines Limited	10 Uxbridge Street, Renwick	Wine & Food	10 February 2024
SPC/161/2023	Lions Club District 202e	1 Fell Street, Grovetown	Lion Club Convention	15-16 March 2024
SPC/162/2023	Renwick Arms Country Club Incorporated	92 High Street, Renwick	2024 Annual fishing competition	25 February 2024
SPC/163/2023	Marlborough Kart Club Incorporated	3 Wither Road, Blenheim	2024 Kart Club race day gathering	3-4 February 2024
SPC/164/2023	Dodson Street Beer Garden	61 Maxwell Road, Blenheim	School Gala Silent Auction	23 March 2024
SPC/165/2023	Framingham Wines Limited	10 Uxbridge Street, Renwick	Marlborough Wine and Food Festival 2024	10 February 2024
SPC/166/2023	Waikawa Boating Club Incorporated	Waikawa Marina, Waikawa Bay, Queen Charlotte Sound / Totaranui	Wedding	24 February 2024

## New Premises Licences

Licence Number	Applicant	Licence Type	Premises	Expiry Date
OFF/054/2023	Mount Riley Wines and Estates Ltd (AKL)	Off Licence	Mount Riley Wines and Estates Ltd (AKL)	21 October 2026
OFF/058/2023	Astrolabe Wines Limited	Off Licence	Astrolabe Small Town Winery	01 February 2025
ON/063/2023	Shyloe Jennifer Leslie	On Licence	Fat Tonys Limited	07 February 2025
ON/071/2023	Rajasthan Jat Ltd	On Licence	Watery Mouth Cafe	09 February 2025

## Renewed Premises Licences

Licence	Applicant	Licence Type	Premises	Expiry Date
CLUB/006/2023	Marlborough Squash Rackets Club Incorporated	Club Licence	Marlborough Squash Rackets Club Inc	06 December 2026
OFF/057/2023	Churton Wines Limited	Off Licence	Churton Wines Limited	25 October 2026



Licence	Applicant	Licence Type	Premises	Expiry Date
OFF/060/2023	EW Freshfoods Limited	Off Licence	FreshChoice Renwick	28 November 2026
OFF/061/2023	Crallex Enterprises Limited	Off Licence	Wairau Valley Tavern	22 November 2026
OFF/062/2023	Savvy Wines Limited	Off Licence	Savvy Wines Limited	15 December 2026
ON/059/2023	The Marlborough Lodge Limited	On Licence	The Marlborough Lodge Limited	11 November 2026
ON/064/2023	The Fancy Cow Limited	On Licence	The Fancy Cow Limited	13 December 2026
ON/065/2023	The Runway Store 2019 Limited	On Licence	The Runway	14 November 2026
ON/066/2023	HRD Limited	On Licence	Grovetown Hotel	07 November 2026
ON/067/2023	Sisu Poltergeist Limited	On Licence	SISU Eatery And Bar	19 January 2027
ON/068/2023	Clos Henri Limited	On Licence	Clos Henri Vineyard	20 December 2026
ON/070/2023	Crallex Enterprises Limited	On Licence	Wairau Valley Tavern	22 November 2026
ON/072/2023	Chateau Marlborough Limited	On Licence	Chateau Marlborough	09 December 2026

## Temporary Authority Premises Licences

Licence	Applicant	Licence Type	Premises	Expiry Date
ON/029/2022	The Waitohi 2023 Incorporated	On Licence	The Waitohi 2023	3 May 2024

## New Manager Certificates

Certificate Number	Applicant	Premises	Expiry Date
CERT/001/2024	Fredrick Isheanesu Chikomba	Framingham Wines	07 February 2025
CERT/002/2024	Alexander Simpson	Criterion Hotel/Biddy Kates	14 February 2025
CERT/003/2024	Donna Marie Hall	The Waitohi 2023	13 February 2025
CERT/004/2024	Lynette Brice	The Grove Tavern 2022 Limited	13 February 2025
CERT/161/2023	Samuel Keir Webb	Frank's Oyster Bar & Eatery	09 February 2025
CERT/161/2023	Samuel Keir Webb	Franks Oyster Bar And Eatery	09 February 2025
CERT/186/2023	Craig James MacDonell	Riverside Bowling Club Incorporated	22 January 2025
CERT/187/2023	Michael John Whareaitu	Te Rawa Lodge (2021) Limited	23 January 2025
CERT/189/2023	Karleeta Caroline Petrice Watson-Reece	Moa Brewing Company Limited	14 February 2025
CERT/190/2023	Fiona Susan Burnett	The Omaka Aviation Heritage Centre	23 January 2025
CERT/194/2023	Debora Lynn Skelton	Villa Maria Estate Ltd (BHE)	07 February 2025
CERT/196/2023	Katherine Nadine Covell	Cloudy Bay Vineyards Limited	07 February 2025
CERT/198/2023	Laura Ricci	Fidelio Cafe and Wine Bar	13 February 2025
CERT/200/2023	Thomas Ludwig-Simon	Rimapere	07 February 2024

## Renewed Manager Certificates

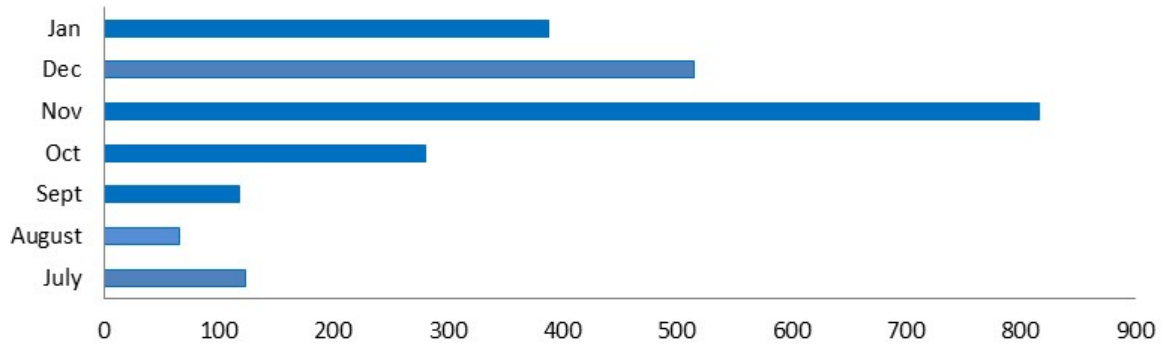
<b>Certificate Number</b>	<b>Applicant</b>	<b>Premises</b>	<b>Expiry Date</b>
CERT/001/2013	Matthew William Carl Sutherland	Dog Point Vineyard	13 February 2027
CERT/005/2020	Kevin Hemant Anand Kamat	Seddon Supervalu	31 January 2027
CERT/007/2017	Rachel Lisa Tau'alupe	Marlborough Vintners Hotel	02 February 2027
CERT/007/2023	Jason Robert Walker	New World Blenheim	23 February 2027
CERT/008/2023	Jessie Annemarie Mate Gleeson	New World Blenheim	23 February 2027
CERT/015/2020	Lisa Jane Stove	The Runway	14 February 2027
CERT/026/2015	Melanie Jane Fishburn	Clubs Of Marlborough	28 January 2027
CERT/031/2015	Deborah Ann Scott	Mikeys Bar And Restaurant	28 January 2027
CERT/129/2021	Bradley Daniel Frederickson	Frederickson	02 February 2027
CERT/142/2022	Sarah Elizabeth Clark	Clark Estate Cellar Door	24 November 2026
CERT/143/2022	Zana Louise Whittaker-Scott	Whittaker-Scott	13 December 2026
CERT/155/2022	Henry James Thompson	Grove Road Superliquor	20 January 2027
CERT/159/2022	Thomas Alan Pegler	Huia Estate Vineyards Limited	10 February 2027
CERT/160/2022	Fillippa Mary Haigh	Marlborough Aero Club Incorporated	01 February 2027
CERT/163/2022	Robert John Clark	The Marlborough	01 February 2027
CERT/164/2022	Kaden Victor Harris	Countdown Redwoodtown	23 February 2027
CERT/304/2016	Mark Robert Morgan	Awatere Rugby Club	24 February 2027
CERT/324/2016	Erika Nicole Malaquin	Pak'n Save Blenheim	02 February 2027
CERT/334/2016	Mikela Dennison	te Pa Family Vineyards Limited	02 February 2027
CERT/339/2016	Amanda Helen Johnson	Spy Valley Wines Limited	02 February 2027

# Compliance Group – Monitoring Update March 2024

(Report prepared by Claire Frooms)

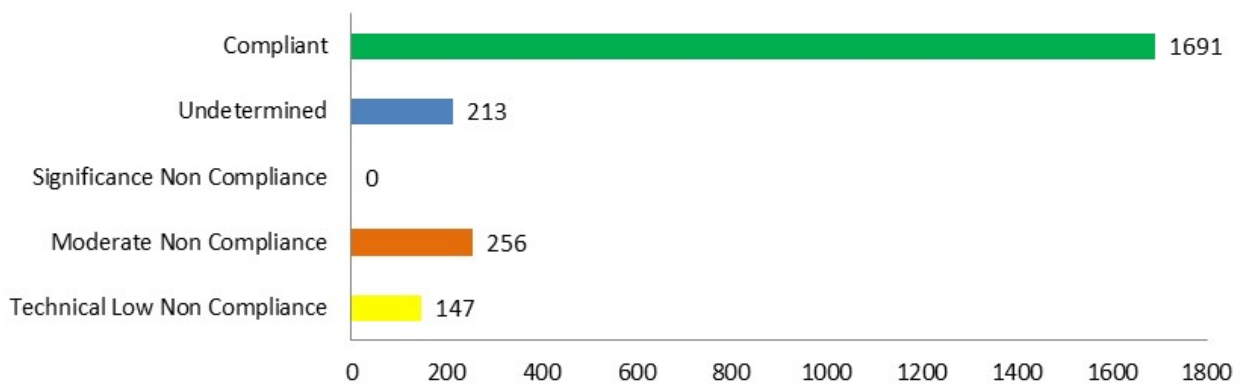
Number of **Consents Monitored** for period 1 July 2023 to date.

## Resource Consents Monitored for July 2023 to date



	July	August	Sept	Oct	Nov	Dec	Jan
■ RC Monitored	123	65	118	281	817	515	388

## Compliance Status of Monitored Consents for July 2023 to date



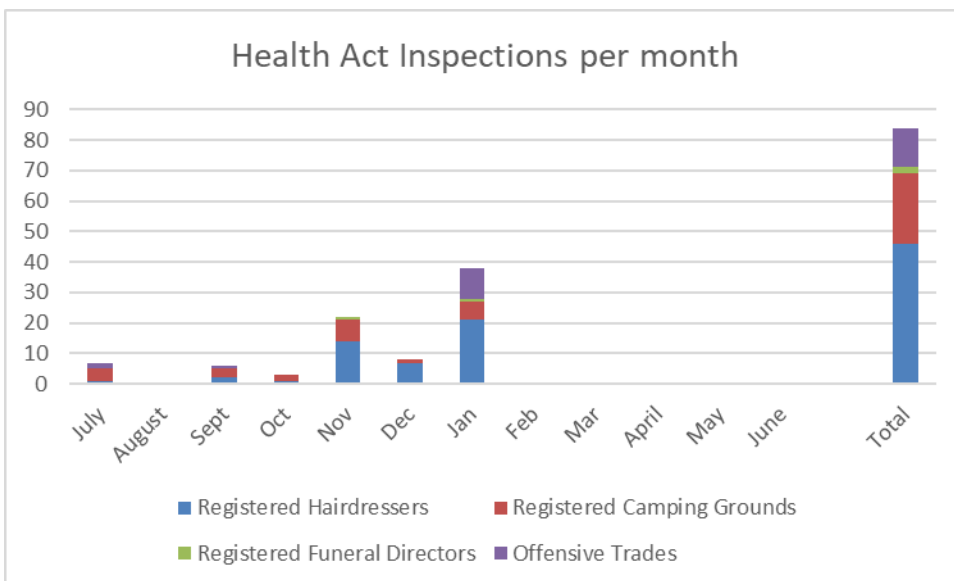
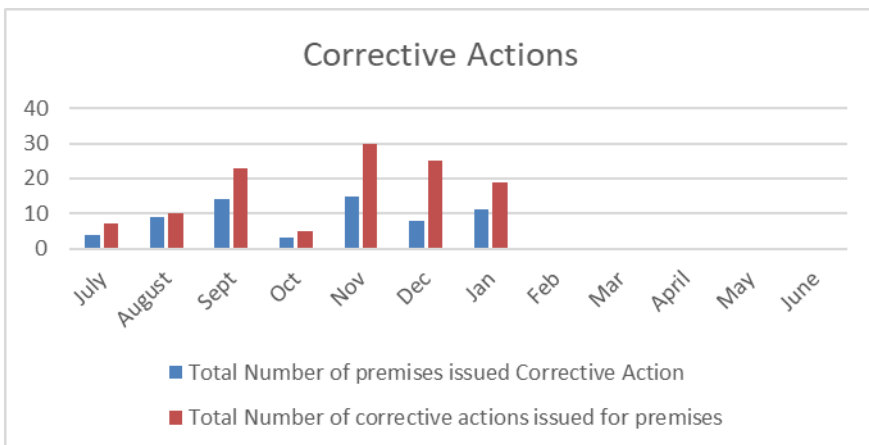
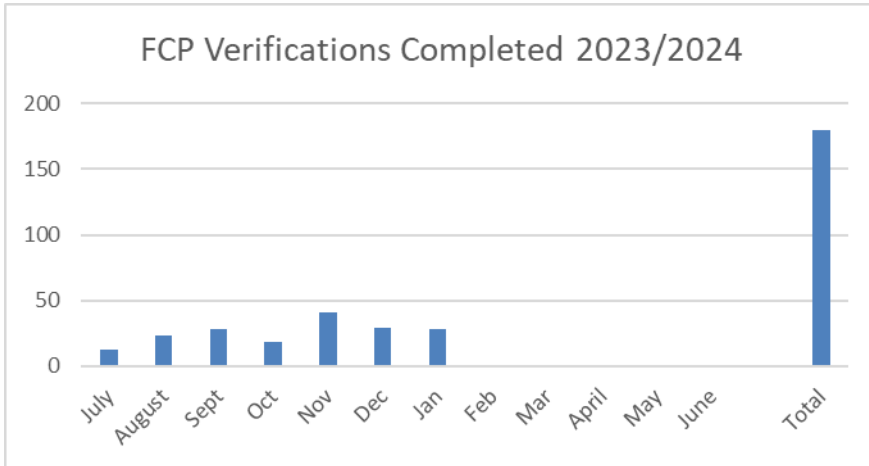
	Technical Low Non Compliance	Moderate Non Compliance	Significance Non Compliance	Undetermined	Compliant
■ Compliance YTD	147	256	0	213	1691



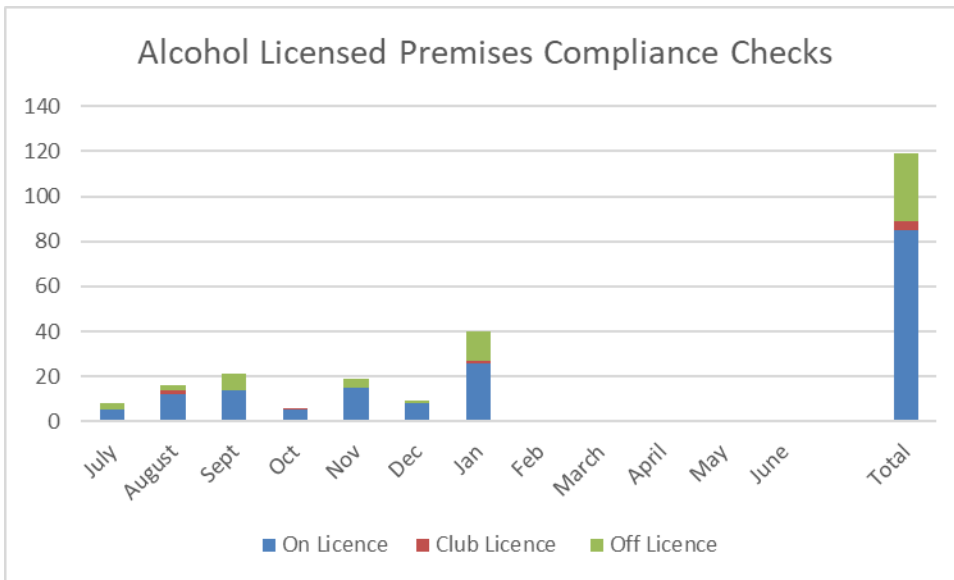
# Environmental Health Team Update – March 2024

(Report prepared by Karen Winter)

Number of Food Act **Verifications** completed year to date from 1 July 2023.



Number **Alcohol Compliance Inspections** from 1 July 2023 to date.



Number of **complaints received** by Environmental Health matters for period of 1 July 2023 to date.

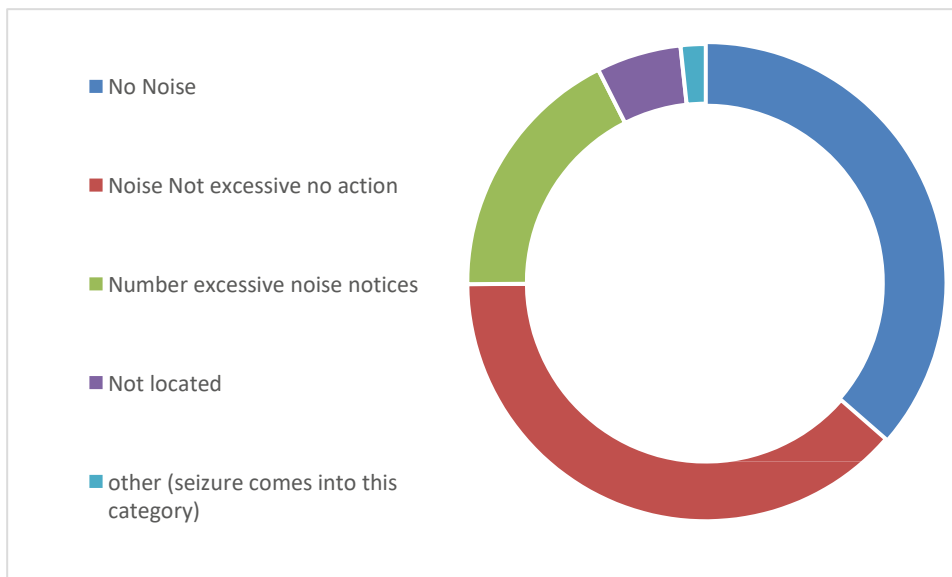


## Noise Control

Number of **Noise Complaints received** 1 July 2023 to date



**Outcomes of noise complaint assessments as percentage**

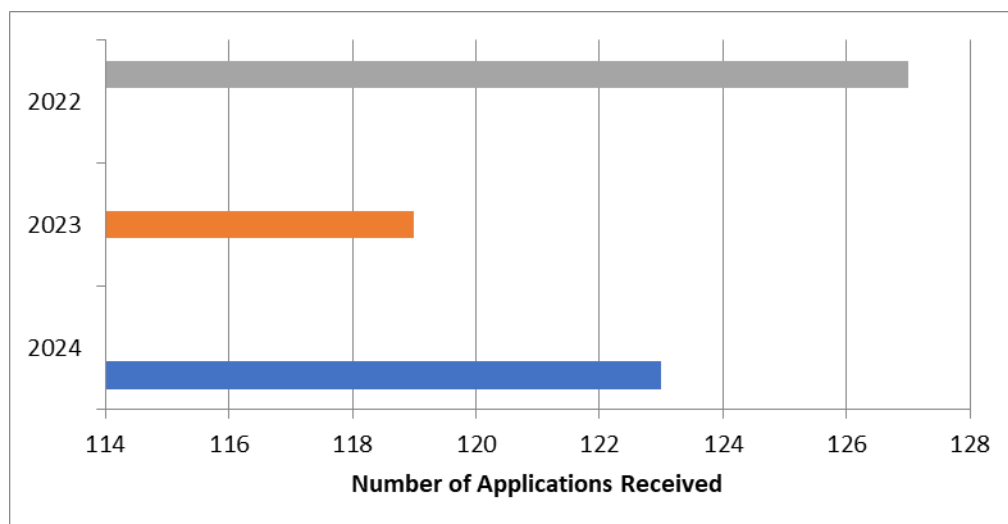


# Resource Consents Section

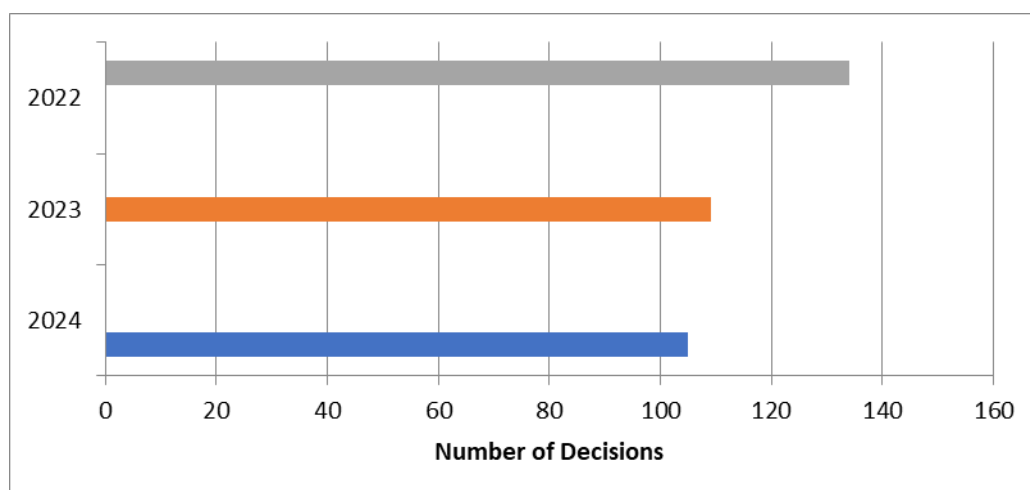
(Report prepared by Anna Eatherley)

R450-004-12

The Resource Consent (RC) Team has experienced a steady start to the 2024 year. Up until mid-February 2024 Council received **123** applications which is more than in 2023 and less than 2022. Of the total received, **114** were new applications for resource consent. Council also received **9** applications for variations to resource consent conditions under section 127. In the same period in 2023 Council received **119** applications and in 2022 Council received **127** applications.



Up until mid-February Council had issued **105** decisions. Of that total, **96** were for new applications for resource consent. Council has also issued **7** section 127 decisions (variations to resource consent conditions) and **2** section 125 decision (extension to lapse date). In the same period in 2023 Council issued **109** decisions and in 2022 Council issued **134** decisions.



Applications in processing were at **547** in mid-February 2024. This is less than the numbers in processing in 2023 (**573**) and 2022 (**578**).

The RC Team sent out the Autumn RC Team newsletter on 1 March 2024. The newsletter had articles on what happened in the resource consent space in 2023; information on Council's opening hours; duty planner statistics; what the repeal of the NBEA means for resource consent planners and applicants; water permits due for renewal over the next ten years and a staff profile. The RCT newsletter which has been very well received to date is widely distributed via email and is also available on the Council website. Previous issues can also be found on the Council website.

The RC team has welcomed a new RM Administration Officer, Wendy Torrens. At the same time the team has farewelled Simon Petrie who has moved to Melbourne.



## Resource Consent Approvals Under Delegated Authority

The following applications have been approved under delegated authority pursuant to Council's Instrument of Delegation pursuant to the Resource Management Act 1991, and the relevant clause thereof as identified below.

	Delegation	Consent Holder	Consent No.	Consent(s) Issued	Proposal	Site Location	Date Issued
1.	104B	Delegat Limited	U230845	Land Use (Dam)  Water Permit (Dam Water)  Water Permit (Divert Water)  Land Use (Land Disturbance)	Construct a storage reservoir of up to 15.9 metres in height.  Dam up to 151,500 cubic metres of water within a storage reservoir.  Divert sub-surface water beneath a storage reservoir and to divert catchment run-off via cut-off drains to be constructed around a storage reservoir.  Deposit clean fill totalling some 11,250 cubic metres.	4263 State Highway 63, Mount Richmond Forest Park	15/01/2024
2.	104B	Starborough Property Company Limited	U230724	Land Use (Activity)	Establish and operate a RSE workers accommodation facility for a maximum of 20 employees.	7 Redwood Street, Seddon	15/01/2024
3.	104B	G Owen and M A Price	U180937	Land Use (Activity)  Land Use (River Surface or Bed Activity) Discharge Permit (to Land) (x2)	Construct two residential dwellings.  Install a culvert crossing in an unnamed stream.  Discharge treated domestic wastewater to land from a new wastewater system from the 'Main Dwelling.'  Discharge treated domestic wastewater to land from a new wastewater system from the 'Managers Quarters.'	Titirangi Road, Kenepuru Sound	17/01/2024

	Delegation	Consent Holder	Consent No.	Consent(s) Issued	Proposal	Site Location	Date Issued
4.	104B	K J Drayton	U240020	Discharge Permit (to Land)	Discharge secondary treated domestic wastewater to land via an existing onsite wastewater management system.	2509 Kenepuru Road, Kenepuru Sound	18/01/2024
5.	104B	D W Bate	U230859	Coastal Permit	Coastal permit to establish a new swing mooring M3906 in Thompson Bay.	Thompson Bay, Queen Charlotte Sound/Tōtaranui	18/01/2024
6.	104B	MLB Construction Limited	U230854	Subdivision (Allotment Creation)	Subdivide Lot 8 DP 1718 into four allotments.	14 Lucas Street, Blenheim	18/01/2024
7.	104B	Vailoa Charters Limited	U230829	Coastal Permit	New coastal permit (replacing U140388) to upgrade existing swing mooring M644 located in Wharetukura Bay.	Wharetukura Bay, Waikawa Bay, Queen Charlotte Sound/Tōtaranui	18/01/2024
8.	104B	P A Rattray	U220971	Discharge Permit (to Land)	Discharge secondary treated domestic wastewater to land within a soil sensitive area via a new wastewater management system.	450 Waihopai Valley Road, Waihopai Valley	19/01/2024
9.	104B	M D Duns, F McCree and D S Duns	U230837	Land Use (River Surface or Bed Activity) (x2)  Land Use (Land Disturbance) (x2)	Install river-bank protection and to undertake gravel beaching and vegetation removal in the Omaka Riverbed.  Undertake vegetation clearance in Sams Creek.  Undertake land disturbance and vegetation clearance in the Floodway Zone.  Undertake vegetation clearance and land disturbance within 8 metres of Sams Creek.	139 Tyntesfield Road, Blenheim	22/01/2024

	Delegation	Consent Holder	Consent No.	Consent(s) Issued	Proposal	Site Location	Date Issued
10.	104B	Pernod Ricard Winemakers New Zealand Limited	U230877	Water Permit (Take Water) (x2)  Water Permit (Use Water) (x2)	Take A Class Awatere FMU water from three infiltration galleries up to a maximum rate of 6751 cubic metres per day.  Take B Class Awatere FMU water from three infiltration galleries up to a maximum rate of 289 cubic metres per day.  Use water for the irrigation of up to 320 hectares of vineyard on various Lots in Clifford Bay.  Use water for ancillary purposes on various Lots in Clifford Bay.	Seaview Road, Seddon	23/01/2024
11.	104B	Taimate Trustees Limited	U230775	Subdivision (Boundary Adjustment)  Land Use (Activity)	Subdivide Section 17 Block IX Cape Campbell Survey District into two allotments as a boundary adjustment.  On the allotments created on U230775.01 to authorise the house on Lot 1 to be within the minimum side boundary setback distance with Lot 2 and the garage on Lot 1 and implement shed on Lot 2 to be within the minimum side boundary setback distance adjoining the new boundary between Lots 1 and 2.	7376 State Highway 1, Ward	23/01/2024

	Delegation	Consent Holder	Consent No.	Consent(s) Issued	Proposal	Site Location	Date Issued
12.	104B	Indevin Estates Limited	U230705	Land Use (River Surface or Bed Activity)  Land Use (Land Disturbance)  Water Permit (Divert Water)	Construct riverbank protection works, to construct low level groynes and to excavate a channel in the Waihopai Riverbed.  Undertake excavations and to clear non-indigenous vegetation within 8 metres of the Waihopai Riverbed.  Divert the Waihopai River adjacent to Lot 3.	Bankhouse, Waihopai Valley	23/01/2024
13.	104B	Willowhaugh Enterprises Limited	U240006	Water Permit (Take Water)  Water Permit (Use Water) (x2)	Abstract Southern Springs FMU water up to a maximum of 36,976 cubic metres per year from well P28w/1784.  Use water for the irrigation of up to 16 hectares of vineyard on Lot 2.  Use water for ancillary viticulture purposes outside of the irrigation season on Lot 2.	353 Middle Renwick Road, Fairhall	24/01/2024
14.	104B	Talley's Limited	U230882	Land Use (Dam)  Land Use (Land Disturbance)  Water Permit (Dam Water)  Water Permit (Divert Water)  Water Permit (Take Water)	Construct an off-stream storage reservoir of up to 9 metres in height.  Undertake filling in excess of 1000 cubic metres.  Dam up to 410,000 cubic metres of water within a storage reservoir.  Divert sub-surface water beneath a storage reservoir.  Take C Class Awatere FMU water up to a maximum rate of 20,000 cubic metres per day for dam construction and storage purposes.	5 Flemings Road, Seddon	24/01/2024



	Delegation	Consent Holder	Consent No.	Consent(s) Issued	Proposal	Site Location	Date Issued
15.	104B	Kaikaiāwaro Charitable Trust Board	U230264	<p>Land Use (Activity)</p> <p>Land Use (Land Disturbance)</p> <p>Land Use (River Surface or Bed Activity)</p> <p>Water Permit (Take Water)</p> <p>Water Permit (Use Water) (x2)</p>	<p>Establish and operate an intensive farming operation (plant nursery facility) and associated administration offices, construct a retaining wall within 8 metres of and undertake vegetation clearance within, or within 10 m of Significant Wetland 373 and operate a vehicle entrance with a non-complying sight distance to the east.</p> <p>Operate wheeled or track machinery within 8 metres and undertake earthworks within, or within a 10 of Significant Wetland 373, undertake filling in excess of 1000 cubic metres within 24 months on Section 1 SO 427361 and undertake earthworks within 8 m of Titiraukawa stream for installation of a screened surface water intake on Lot 1 DP 8091.</p> <p>Occupy the bed and the space above the bed of Titiraukawa Stream with a screened water intake and telemetered water level recorder and staff gauge.</p> <p>Take A Class Rai FMU water up to a maximum rate of 310 cubic meters per day from well 20163 on Section 1 SO 427361 and from Titiraukawa Stream.</p> <p>Use water for intensive farming (plant nursery).</p> <p>Use water for administration offices and staff facilities associated with a plant nursery.</p>	28 Maungatapu Road, Rai Valley	24/01/2024

	Delegation	Consent Holder	Consent No.	Consent(s) Issued	Proposal	Site Location	Date Issued
16.	104B	Okiwi Bay Limited	U230605	Subdivision (Allotment Creation) (x2)	<p>Stage 1 - To subdivide Lots 2, 4, 6-9 and Lot 2 DP 589577 into five holdings containing Lots 1, 2, 4, 7, 9 - 20 and 22.</p> <p>Stage 2 - To subdivide Lots 1, 2, 4, 7 and 9 (created on Stage 1 U230605.01) into 7 holdings containing Lots 1, 2, 3 and 4 -9.</p>	Croisilles Road, Okiwi Bay	24/01/2024
17.	104B	Grand Designs Limited	U230795	<p>Subdivision (Allotment Creation) (x2)</p> <p>Land Use (Land Disturbance)</p>	<p>Stage 1 - To subdivide Lots 1 and 2 DP 533094 into 10 residential allotments, a balance lot, and road and drainage reserves to vest.</p> <p>Stage 2 - To subdivide Lot 101 (created on Stage 1) into 8 residential allotments and road to vest.</p> <p>Undertake land disturbance associated with the subdivision, including construction of the roads, installation of services, construction of the stormwater retention pond, excavation in a Groundwater Protection Area, soil disturbance and sampling associated with remediation of contaminated soils on Lot 2.</p>	25 Rose Street, Blenheim	24/01/2024
18.	104B	V L Anthony	U240018	Discharge Permit (to Land)	Discharge secondary treated domestic wastewater to land on Lot 10.	2487 Kenepuru Road, Kenepuru Sound/Te Hoiere	25/01/2024
19.	104B	Deluxe Property Group Limited	U230883	<p>Water Permit (Take Water)</p> <p>Water Permit (Use Water)</p>	<p>Abstract Wairau Aquifer FMU water up to a maximum of 14,365 cubic meters annually from well P28w/2181 located on Lot 1.</p> <p>Use water for the irrigation of up to 8.5 hectares of vineyard on Lot 1.</p>	34 Thomsons Ford Road, Spring Creek	24/01/2024

	Delegation	Consent Holder	Consent No.	Consent(s) Issued	Proposal	Site Location	Date Issued
20.	104B	McKendry Properties Limited	U230856	Subdivision (Allotment Creation)	Subdivide Lot 1 DP 1079 into four allotments.	5 Poynter Street, Blenheim	25/01/2024
21.	104B	A B Boyd	U230842	Water Permit (Take Water)  Water Permit (Use Water)	Take Ohinemahuta River FMU water up to a maximum rate of 572 cubic metres per day from a mobile screened suction pump directly in the river.  Use water for the irrigation of up to 13 hectares of pasture and crops on Lot 1 and within 100 metres of a wetland.	17 Peakes Road, Northbank	25/01/2024
22.	104B	K J Morgan	U240021	Discharge Permit (to Land)	Discharge secondary treated domestic wastewater to land via an existing onsite wastewater system.	923 Kenepuru Road, Mahau Sound, Linkwater	26/01/2024
23.	104B	T J and E A Wadworth, S L Wadworth and V I Wadworth	U230532	Coastal Permit	New coastal permit to construct a new 7.4 metre long x 4.2 metre wide boatshed with associated 2.0 metre wide decking to front and side; and for an existing fixed jetty associated with Lot 48 in Christys Bay, Queen Charlotte Sound/Tōtaranui.	Christys Bay, Queen Charlotte Sound/Tōtaranui	26/01/2024
24.	104B	Sanford Limited	U230816	Coastal Permit	New coastal permit to realign and operate, using conventional longline methods, an existing 3.0 hectare marine farm located in Hallam Cove, Pelorus Sound/Te Hoiere.	Hallam Cove, Pelorus Sound / Te Hoiere	29/01/2024

	Delegation	Consent Holder	Consent No.	Consent(s) Issued	Proposal	Site Location	Date Issued
25.	104B	C A Ibbotson, R J Neame and Maitai Trustee Company No.103 Limited	U230672	Coastal Permit (x2)	New coastal permit for the continuation of an existing jetty and retaining wall fronting Lot 1 in Admiralty Bay, Pelorus Sound/Te Hoiere.  New coastal permit to validate an existing concrete boat ramp fronting Lot 1 in Admiralty Bay, Pelorus Sound/Te Hoiere.	Admiralty Bay, Pelorus Sound/Te Hoiere	29/01/2024
26.	104B	B E Schultz, J D Schultz and J H MacLean	U240038	Discharge Permit (to Land)	Discharge secondary treated domestic wastewater to land.	383 Te Towaka – Port Ligar Road, Hamilton Bay, Admiralty Bay	30/01/2024
27.	104B	Valiant Vineyard Limited	U230828	Land Use (River Surface or Bed Activity)  Land Use (Land Disturbance)  Water Permit (Divert Water)	Construct a rock drain in the base of an intermittently flowing watercourse (upper Starborough Creek) and a subsurface pipe drain in an ephemeral watercourse (upper Hog Swamp Creek).  Undertake excavations within 8 metres of an intermittently flowing watercourse (upper Starborough Creek) to install a rock drain.  Divert water via a subsurface pipe drain into a natural channel of the upper Hog Swamp creek catchment.	477 Marama Road, Seddon	30/01/2024
28.	104C	Sanford Limited	U230813	Coastal Permit	New coastal permit to operate, using conventional longline methods, an existing 3.5775 hectare marine farm located in Port Underwood/Te Whanganui.	Port Underwood/Te Whanganui	30/01/2024



	Delegation	Consent Holder	Consent No.	Consent(s) Issued	Proposal	Site Location	Date Issued
29.	104A	Sanford Limited	U230812	Coastal Permit	New coastal permit to operate, using conventional longline methods, an existing 1.944 hectare marine farm located in Whataroa Bay, Port Underwood/Te Whanganui.	Whataroa Bay, Port Underwood/Te Whanganui	30/01/2024
30.	104B	Middlehurst Station Limited	U161245	Water Permit (Take Water)  Water Permit (Use Water)	Take B Class Awatere River FMU water from up to seven intakes on the Awatere River up to a maximum rate of 4,419 cubic metres per day.  Use water for the irrigation of up to 80 hectares of pasture and crops on Secs 1-3 Fairfield Downs DIST and Secs 18 and 27 Upper Fairfield Downs DIST.	7935 Awatere Valley Road, Upper Awatere	31/01/2024
31.	104B	Picton Beachcomber Inn 2000 Limited	U240025	Land Use (Activity)	Construct a canopy that does not have an attached street veranda and to have a main customer building entrance setback from the boundary.	27 Waikawa Road, Picton	31/01/2024
32.	104B	C W McIntyre	U230855	Discharge Permit (to Land)	Discharge domestic greywater to land from a new onsite wastewater system.	Whatanihi Bay, Pelorus Sound/Te Hoiere	31/01/2024
33.	104B	Sanford Limited	U230817	Coastal Permit	New coastal permit to realign and operate, using conventional longline methods, an existing 5.67 hectare marine farm located in Hallam Cove, Pelorus Sound/Te Hoiere.	Hallam Cove, Pelorus Sound/Te Hoiere	31/01/2024
34.	104B	Marlborough Lines Limited	U240070	Land Use (Activity)	Cancellation of Building Line Restriction number OIC654.	664 Old Renwick Road, Renwick	01/02/2024
35.	104B	B D A Matthews	U240002	Land Use (Activity)	Operate a meat processing facility.	3 Mills Street (State Highway 1), Seddon	01/02/2024

	Delegation	Consent Holder	Consent No.	Consent(s) Issued	Proposal	Site Location	Date Issued
36.	104A	Sanford Limited	U230814	Coastal Permit	New coastal permit to operate, using conventional longline methods, an existing 5.11 hectare marine farm located in Whataroa Bay, Port Underwood/ Te Whanganui.	Whataroa Bay, Port Underwood/Te Whanganui	01/02/2024
37.	104B	J Clark and T M Pivac for the J Clark Family Trust	U230612	Land Use (Activity)  Land Use (Land Disturbance)	Undertake indigenous vegetation clearance and establish a structure within 28 metres of the Coastal Marine Area for the purpose of establishing a track.  Undertake excavation and filling over 50 cubic metres on slopes greater than 25 degrees for the purpose of establishing a track.	Blackwood/Tahuahua Bay, Queen Charlotte Sound/Tōtaranui	01/02/2024
38.	104B	Scott Family Winemakers Limited	U240019	Land Use (Activity)	Install an additional 10 over height wine tanks with a gantry located straddling the boundary.	229 Jacksons Road, Blenheim	02/02/2024
39.	104B	A J Gubbins Ryan and M E Ryan	U230840	Land Use (Activity) (x2)  Land Use (Land Disturbance)	Construct a replacement dwelling house that exceeds maximum height.  Construct a replacement dwelling house and retaining walls located within the site boundary.  Undertake excavation and filling that exceeds 50 cubic metres and excavations on a slope greater than 25 degrees.	Miritu Bay, Bay of Many Coves, Queen Charlotte Sound/Tōtaranui	02/02/2024
40.	104B	Flo NZ Vineyards Limited	U230827	Water Permit (Take Water)	Abstract C Class Waihopai FMU water up to a maximum rate of 10,000 cubic metres per day from an existing infiltration gallery.	166 Guernsey Road, Renwick	02/02/2024

	Delegation	Consent Holder	Consent No.	Consent(s) Issued	Proposal	Site Location	Date Issued
41.	104B	Sanford Limited and KPF Investments Limited	U230821	Coastal Permit	New coastal permit to realign and operate, using conventional longline methods, an existing 4.43 hectare marine farm located in Canoe Bay, Pelorus Sound/Te Hoiere.	Canoe Bay, Pelorus Sound/Te Hoiere	02/02/2024
42.	104B	C B and B A O'Brien, Farry and Co trustees Limited	U230678	Land Use (Activity)	Change conditions 8 and 9 of consent notice 7706229.3 as they relate to Lot 5.	Kenepuru Road, Kenepuru Sound	02/02/2024
43.	104B	LTJ Build Limited	U230501	Land Use (Activity)  Land Use (Land Disturbance)	Establish a dwelling with non-compliant outdoor amenity area.  Undertake excavation and filling in excess of 50 cubic metres on slopes greater than 10 degrees to establish a dwelling and curtilage.	17 Harbour View Heights, Picton	07/02/2024
44.	104B	Johnson Estate Limited	U240015	Discharge Permit (to Land)	Certificate of Compliance to discharge winery wastewater to land.	37 Lake Timara Road, West Hawkesbury, Waihopai Valley	07/02/2024
45.	104B	Talley's Limited	U230881	Water Permit (Take Water) (x2)  Water Permit (Use Water) (x2)	Abstract B Class Awatere FMU water up to a maximum rate of 5,500 cubic metres per day from an existing intake.  Abstract C Class Awatere FMU water up to a maximum rate of 5,500 cubic metres per day from an existing intake.  Use water for the irrigation of up to 250 hectares of vineyard.  Use water for ancillary viticulture purposes up to a maximum of 25,000 cubic metres per year.	714 Marama Road, Seddon	07/02/2024

	Delegation	Consent Holder	Consent No.	Consent(s) Issued	Proposal	Site Location	Date Issued
46.	104B	G A Hunt and M P Brown as trustees of Olimitch Trust	U230870	Land Use Consent  Coastal Permit	To remediate slip damage at Black Point, including earthworks and the repair and extension of an existing shoreline retaining wall.  To remediate slip damage at Black Point by repairing and extending an existing shoreline retaining wall.	Black Point, Pelorus Sound/Te Hoiere	07/02/2024
47.	104B	Sanford Limited	U230815	Coastal Permit	New coastal permit replacing MFL181, MFL197 and U090136 to realign and operate, using conventional longline methods, an existing 7.99 hectare marine farm located in Hallam Cove.	Hallam Cove, Pelorus Sound/Te Hoiere	07/02/2024
48.	104B	Sanford Limited	U230810	Coastal Permit	New coastal permit replacing MFL200 and U090380 to operate, using conventional longline methods, an existing 4.25 hectare marine farm located in Port Ligar.	Port Ligar, Pelorus Sound/Te Hoiere	07/02/2024
49.	104C	Sanford Limited	U230809	Coastal Permit	New coastal permit replacing U090522 to operate, using conventional longline methods, an existing 2.7 hectare marine farm located at Cape Horn, Port Ligar.		07/02/2024
50.	104B	Longfield Farm Limited	U220477	Water Permit (Take)  Water Permit (Use) (x2)	Abstract A Class Wairau River FMU water up to a maximum rate of 5,600 cubic metres per day from an infiltration gallery.  Use water for the irrigation of up to 100 hectares of arable crops and pasture.  Use water outside of the irrigation season for ancillary use up to a maximum rate of 5,600 cubic metres per day and up to 10,000 cubic metres per year.	4437 State Highway 63, Wairau Valley	07/02/2024



	Delegation	Consent Holder	Consent No.	Consent(s) Issued	Proposal	Site Location	Date Issued
51.	104B	D-M and P A Wiblin	U240042	Discharge Permit (to Land)	Discharge primary treated domestic wastewater to land.	1831 Croisilles Road, Okiwi Bay	08/02/2024
52.	104B	Te Kohanga Reo o Nga Puawai	U240028	Land Use (Activity)	Establish a double-sided freestanding sign in Road Reserve.	Road reserve, northeast Corner of Ballinger Drive and Budge Street, Riversdale, Blenheim	08/02/2024
53.	104C	Reade Family Holdings Limited	U240024	Land Use Consent	Carry out earthworks for the construction of new forestry tracks and forestry landings.	State Highway 6, Okaramio	08/02/2024
54.	104B	Marlborough District Council	U240017	Land Use (Land Disturbance)	Construct a new stop bank adjacent to the Wairau River at Conders Bend, Onamalutu.	Conders Bend, Renwick	08/02/2024
55.	104B	Wye Hills Limited	U240010	Water Permit (Take Water)  Water Permit (Use Water) (x2)	Abstract A Class Wairau River FMU water up to a maximum rate of 5,789 cubic meters per day from an infiltration gallery located in the Wye River.  Use water for the irrigation of up to 60.3 hectares of vineyard and up to 276 hectares of pasture and crops.  Use water for ancillary uses.	4603 State Highway 63, Wairau Valley	08/02/2024
56.	104B	Omaka Settlement Vineyards Limited	U230258	Water Permit (Take Water)  Water Permit (Use Water) (x3)	Take Omaka Aquifer FMU water up to a maximum rate of 48,807 cubic meters per year from well.  Use water for the irrigation of up to 19 hectares of vineyard and 1.8 hectares of olives.  Use water for ancillary uses outside of the irrigation season.  Use water in a winery.	47 Kennedys Road, Hawkesbury	08/02/2024

	Delegation	Consent Holder	Consent No.	Consent(s) Issued	Proposal	Site Location	Date Issued
57.	104B	G T and D J Percasky	U220882	Land Use (Activity) (x2)  Subdivision (Allotment Creation)  Discharge Permit (To Land) (x2)	Temporarily retain the existing dwelling for use by construction workers while the second dwelling is being built on that same record of title.  Allow construction of two dwellings within 28 metres of the Coastal Marine Zone and within 8 metres of site boundaries and authorising the dwelling on proposed Lot 3 to be within 8 metres of the boundary.  Subdivide Lots 2 and 3 to create three allotments.  Discharge secondary treated wastewater to land.  Discharge secondary treated wastewater to land.	2631 and 2633 Queen Charlotte Drive, Picton	08/02/2024
58.	104B	Misty Cove Holdings Limited	U220494	Water Permit (Take Water)  Water Permit (Use Water) (x2)	Take A Class Wairau River FMU water up to a maximum rate of 330 cubic metres per day from an existing well.  Use water for the irrigation of up to 15 hectares of vineyard.  Use water for ancillary purposes outside of the irrigation season.	2486 State Highway 63, Wairau Valley	08/02/2024
59.	104B	Te Whatu-Ora - Health New Zealand	U240037	Land Use (Land Disturbance) (x2)	Undertake excavation and filling in excess of 50 cubic metres.  Undertake soil disturbance that does not comply with Regulation 8(3) (c) and (d) and 8(4)(b) of the National Environmental Standards for Assessing and Managing Contaminants in Soil to Protect Human Health Regulations 2011.	30 Hospital Road, Blenheim	09/02/2024

	Delegation	Consent Holder	Consent No.	Consent(s) Issued	Proposal	Site Location	Date Issued
60.	104B	Talley's Group Limited	U240014	Coastal Permit	New coastal permit replacing U200599 to realign and operate, using conventional longline methods, an existing 9.55 hectare marine farm located in Skiddaw Bay.	Skiddaw Bay, Kenepuru Sound	09/02/2024
61.	104C	Talley's Group Limited	U240013	Coastal Permit	New coastal permit replacing U100780 to realign and operate, using conventional longline methods, an existing 2.5 hectare marine farm located in Maori Bay.	Maori Bay, Pelorus Sound/Te Hoiere	09/02/2024
62.	104B	Talley's Group Limited	U240012	Coastal Permit	New coastal permit replacing U191053 to realign and operate, using conventional longline methods, an existing 10.71 hectare marine farm located in Scotts Bay.	Scotts Bay, Kenepuru Sound	09/02/2024
63.	104A	Talley's Group Limited	U240009	Coastal Permit	New coastal permit replacing U201010 to realign and operate, using conventional longline methods, an existing 3.0 hectare marine farm located southwest of Schnapper Point.	Southwest of Schnapper Point, Kenepuru Sound	09/02/2024
64.	104B	Talley's Group Limited	U230886	Coastal Permit	New coastal permit replacing U120692 to realign and operate, using conventional longline methods an existing 5.0 hectare marine farm located in Yncyca Bay.	Yncyca Bay, Pelorus Sound/Te Hoiere	09/02/2024
65.	104B	Talley's Group Limited	U230885	Coastal Permit	New coastal permit replacing U200340 to realign and operate, using conventional longline methods, and to extend by 0.055 hectares, an existing 6.57 hectare marine farm located in South East Bay.	South East Bay, Pelorus Sound/Te Hoiere	09/02/2024

	Delegation	Consent Holder	Consent No.	Consent(s) Issued	Proposal	Site Location	Date Issued
66.	104B	G G and J A Smith	U230884	Land Use (Activity)  Land Use (Land Disturbance)	Construct a dwelling within 8 metres of a drainage channel.  Undertake excavation and fill within 8 metres of a drainage channel.	9 Bartletts Green, Yelverton	09/02/2024
67.	104B	Talley's Group Limited	U230874	Coastal Permit	New coastal permit replacing U181063 to realign and operate, using conventional longline methods, an existing 3.0 hectare marine farm located in Grant Bay.	Grant Bay, Pelorus Sound/Te Hoiere	09/02/2024
68.	104B	Talley's Group Limited	U230873	Coastal Permit	New coastal permit replacing U190904 to realign and operate, using conventional longline methods, an existing 5.68 hectare marine farm located in Grant Bay.	Grant Bay, Pelorus Sound/Te Hoiere	09/02/2024
69.	104B	Talley's Group Limited	U230872	Coastal Permit	New coastal permit replacing U130122 to realign and extend by 0.295 hectares, and operate using conventional longline methods, an existing 6.985 hectare marine farm located in Beatrix Bay, bringing the total area of the farm to 7.28 hectares.	Beatrix Bay, Pelorus Sound/Te Hoiere	09/02/2024
70.	104B	M S Akhurst and G F Dacey	U230866	Discharge Permit (to Land)	Discharge treated domestic wastewater to land via an existing onsite wastewater system.	28 Lady Cobham Grove, Anakiwa	09/02/2024
71.	104B	A J and T L Poswillo, M R B Wilson	U230836	Discharge Permit (to Land)	Subdivide into two allotments. Authorise dwellings to be erected on each of the new lots. Undertake earthworks.	7A Colemans Road, Springlands, Blenheim	09/02/2024
72.	104B	B M Woods, J Maurice, Y W J Clunies-Ross, R King-Turner, D R Foley, Jolly Pelorus Holdings Limited	U240003	Land Use (Activity)  Land Use (Land Disturbance)	Construct a new vehicle crossing off the Croisilles-French Pass Road.  Establish a new connecting track with associated earthworks on road reserve.	Croisilles-French Pass Road, Pelorus Sound/Te Hoiere	12/02/2024

	Delegation	Consent Holder	Consent No.	Consent(s) Issued	Proposal	Site Location	Date Issued
73.	104C	Talley's Group Limited	U230887	Coastal Permit	New coastal permit replacing U210894 to realign and operate, using conventional longline methods, an existing 4.35 hectare marine farm site 8340 located in South East Bay.	South East Bay, Pelorus Sound/Te Hoiere	12/02/2024
74.	104B	Huimei Investments (NZ) Pty Limited	U230791	Land Use Activity	Create rights of way for pedestrian access over Lot 23 and Lot 1 and pedestrian and bicycle access over Lot 23 and Lot 1.	Whataroa Peninsula, Port Underwood	12/02/2024
75.	104B	Azmera Limited	U230773	Land Use Consent	Undertake earthworks to remove up to 20,000 cubic metres of spoil material resulting from a slip on a private right of way, to enable restoration of vehicular access, including drainage and land stabilisation works such as benching, contouring and landscaping, temporary storage of excavated material on site; and earthworks in excess of 1,000 cubic metres per year for maintenance purposes.	286 Mahau Road, Mahau Sound	12/02/2024



	Delegation	Consent Holder	Consent No.	Consent(s) Issued	Proposal	Site Location	Date Issued
76.	104B	M C Chapman and Angora-Dale Trustees Limited (as Trustees of the Angora-Dale Trust)	U230131	<p>Water Permit (Take Water) (x2)</p> <p>Water Permit (Use Water) (x2)</p> <p>Land Use (River Surface or Bed Activity) (x2)</p>	<p>Take B Class Waihopai River FMU water up to a maximum rate of 2,200 cubic metres per day, 25.5 litres per second, from two intakes.</p> <p>Take B Class Waihopai River FMU water up to a maximum rate of 2,200 cubic metres per day, 25.5 litres per second, 10,000 cubic metres per year outside of the irrigation season from two intakes.</p> <p>Use water for the irrigation of up to 100 hectares of vineyard.</p> <p>Use water for ancillary purposes.</p> <p>Undertake works in the Waihopai River streambed to construct and maintain a surface water intake and associated infrastructure on the true right bank of the Waihopai River.</p> <p>Undertake works in the Waihopai River streambed to construct and maintain a surface water intake and associated infrastructure on the true left bank of the Waihopai River.</p>	1436 Waihopai Valley Road, Waihopai Valley	12/02/2024

	Delegation	Consent Holder	Consent No.	Consent(s) Issued	Proposal	Site Location	Date Issued
77.	104B	Gill Construction Company Limited	U220527	Water Permit (Take Water) (x2)  Water Permit (Use Water) (x3)	Take A Class Wairau River FMU water from well 10800 up to a maximum rate of 396 cubic metres per day.  Take A Class Wairau River FMU water from well 10800 up to a maximum rate of 90 cubic metres per day.  Use water for the irrigation of up to 18 hectares of vineyard and use water within 100 metres of wetland W224.  Use water for ancillary uses.  Use water for re-watering Significant Wetland W224.	1836 State Highway 63, Wairau Valley	12/02/2024
78.	104B	Marisco Properties Limited	U230825	Water Permit (Take Water)	To abstract C Class Waihopai FMU water up to a maximum rate of 20,000 cubic metres per day from two existing infiltration galleries.	1242 Waihopai Valley Road, Waihopai Valley	13/02/2024
79.	104C	Sanford Limited	U230811	Coastal Permit	New coastal permit replacing MFL298 and U081170 to operate, using conventional longline methods, an existing 3.55 hectare marine farm site 8069 located in Port Ligar.	Port Ligar, Pelorus Sound/Te Hoiere	13/02/2024
80.	104B	Hille Trustee Limited	U230726	Land Use (Land Disturbance)	Undertake land disturbance including excavations in excess of 1,000 cubic metres on slopes greater than 20 degrees and filling in excess of 1,000 cubic metres.	97 Wrekin Road, Fairhall	13/02/2024
81.	104B	Lion NZ Limited	U240074	Discharge Permit (to Land)	Discharge secondary treated domestic wastewater at a rate not exceeding 3,135 litres per day to land.	229 New Renwick Road, Omaka	14/02/2024

	Delegation	Consent Holder	Consent No.	Consent(s) Issued	Proposal	Site Location	Date Issued
82.	104B	Terra Vitae Vineyards Limited and Cobden Farm Limited	U240045	Water Permit (Divert Water)  Land Use (River Surface or Bed Activity)	Divert water over existing infiltration galleries.  Install and maintain a diversion channel in the Awatere Riverbed.	1036 Marama Road, Awatere Valley	14/02/2024
83.	104B	Kintyre Vineyard Limited Partnership, Tirosch Estates Limited, Shalev Estates Limited	U230371	Land Use (River Surface or Bed Activity) (x2)	Undertake works in the Wairau Riverbed to maintain an infiltration gallery. Use an existing infiltration gallery.	3552 State Highway 63, Wairau Valley	14/02/2024
84.	104B	Talley's Group Limited	U230860	Coastal Permit	New coastal permit replacing U200484 to realign and operate, using conventional longline methods, an existing 3.40 hectare marine farm site 8357 located in Nydia Bay.	Nydia Bay, Pelorus Sound/Te Hoiere	15/02/2024
85.	104B	Medway Hills Limited	U230846	Water Permit (Take Water) (x2)  Water Permit (Use Water) (x2)	Abstract B Class Awatere FMU water up to a maximum rate of 4,125 cubic metres per day from two existing intakes. Abstract C Class Awatere FMU water up to a maximum rate of 2,160 cubic metres per day from an existing intake. Use water for the irrigation of up to 75 hectares of pasture and crops. Use water for ancillary purpose.	30 Welds Hill Road, Awatere Valley	15/02/2024

	Delegation	Consent Holder	Consent No.	Consent(s) Issued	Proposal	Site Location	Date Issued
86.	104B	PF Olsen Limited	U230688	Water Permit (Take Water)  Water Permit (Use Water) (x2)	Abstract Awatere River Class A FMU water up to a maximum rate of 318 cubic metres per day from an existing infiltration gallery.  Use water for the irrigation of up to 10.59 hectares of pine seed orchard.  Use water for ancillary uses outside irrigation season.	20 Flemings Road, Seddon	15/02/2024
87.	104B	R F Monopoli	U240100	Land Use (Activity)	Construct dwelling extensions that will encroach the northern recession plane (taken from the right of way boundary).	943 Kenepuru Road, Mahau Sound, Linkwater	19/02/2024
88.	104B	A J and S P Stevens	U240039	Land Use (Activity)  Land Use (Land Disturbance)	Establish a structure within 8 metres of a waterway.  Undertake excavations on a slope greater than 25 degrees within 8 metres of a waterway.	2301 Kenepuru Road, Kenepuru Sound	19/02/2024
89.	104B	C Brand Family Trust, C Brand, A A Hillan Low	U240007	Land Use (Activity)	Vary condition 2 of consent notice 7035490.2 as it relates to Lot 2.	44 Waimarama Street, Waikawa, Picton	19/02/2024
90.	104B	Talley's Group Limited	U230863	Coastal Permit	New coastal permit replacing U200710 to realign and operate, using conventional longline methods, an existing 4.63 hectare marine farm site 8367 located in Nydia Bay.	Nydia Bay, Pelorus Sound/Te Hoiere	19/02/2024
91.	104B	Talley's Group Limited	U230861	Coastal Permit	New coastal permit replacing U200792 to realign and operate, using conventional longline methods, an existing 3.0 hectare marine farm site 8364 located in Nydia Bay.	Nydia Bay, Pelorus Sound/Te Hoiere	19/02/2024

	Delegation	Consent Holder	Consent No.	Consent(s) Issued	Proposal	Site Location	Date Issued
92.	104B	Delegat Limited	U240077	Land Use (Activity)	Construct two heavy duty vehicle crossings opposite one another which provide access to Lot 3 and to Lot 6.	4263 State Highway 63, Wairau Valley	20/02/2024
93.	104B	Pinoli Limited	U230875	Subdivision (Boundary Adjustment)	Subdivide Lots 1 and 2 and Part Lot 12A as a boundary adjustment to create two allotments.	1145 Avon Valley Road, Waihopai Valley	20/02/2024
94.	104B	The Car Distribution Group Limited	U230706	Land Use (Activity) (x2)  Land Use (Land Disturbance) (x2)	Establish and operate a vehicle storage and transportation site (vehicle orientated activity). Undertake a residential activity. Undertake earthworks (excavation and filling) that exceeds 20 cubic metres. Undertake soil disturbance within a HAIL site that does not comply with Regulation 8(3)(c) and 8(3)(d) of the National Environmental Standard for Assessing and Managing Contaminants in Soil to Protect Human Health Regulations 2011.	27 – 45 Auckland Street, Picton	20/02/2024
95.	104B	Shalev Estate Limited	U230700	Subdivision (Boundary Adjustment)	Subdivide Part Section 28 and Section 29-30 into two allotments as a boundary adjustment.	3579 State Highway 63, Wairau Valley	20/02/2024
96.	104B	Mandeville Vineyard Limited	U230541	Water Permit (Take Water)  Water Permit (Use Water) (x2)	Abstract A Class Wairau River FMU water up to a maximum rate of 165 cubic metres per day. Use water for the irrigation of up to 7.5 hectares on vineyard. Use water for ancillary viticulture purposes up to a maximum of 750 cubic metres per year outside of the irrigation season.	Kaituna-Tuamarina Road, Kaituna	20/02/2024



	Delegation	Consent Holder	Consent No.	Consent(s) Issued	Proposal	Site Location	Date Issued
97.	104B	Indevin Estates Limited	U230518	Land Use (Dam)  Water Permit (Dam Water)	Construct an off-stream storage reservoir of up to 13 metres in height.  Dam up to 500,000 cubic metres of water within a storage reservoir.	1025 State Highway 63, Wairau Valley	20/02/2024
98.	104B	Windermere Properties Limited	U240075	Water Permit (Take Water)  Water Permit (Use Water) (x2)	Take A Class Tuamarina FMU water from an existing intake up to a maximum rate of 1,858 cubic metres per day.  Use water for the irrigation of up to 70 hectares of vineyard and up to 6 hectares of pasture and crops on Lot 1, Lot 3, Sections 8 – 10, Part Section 11, Waitohi DIST, and Part Section 3 Raydale Run North Bank of Wairau Dist.  Use water for ancillary uses on Lot 1, Lot 3, Sections 8 – 10, Part Section 11, Waitohi DIST, and Part Section 3 Raydale Run North Bank of Wairau Dist.	66 Parkes Road, Tuamarina	21/02/2024
99.	104B	C L Howard	U240047	Land Use (Activity)  Land Use (Land Disturbance)	Construct a retaining wall within 8 metres of a boundary and within road reserve.  Undertake excavation and filling within road reserve.	454 Port Underwood Road, Whatamango	21/02/2024
100	104B	Bladen Wines Limited	U240046	Water Permit (Take Water)  Water Permit (Use Water) (x2)	Abstract Wairau Aquifer FMU water up to a maximum of 10,009 cubic metres per year from well.  Use water for the irrigation of up to 6 hectares of vineyard.  Use up to 1,825 cubic metres of water per year for commercial and cellar door purpose.	83 Conders Bend, Renwick	21/02/2024

	Delegation	Consent Holder	Consent No.	Consent(s) Issued	Proposal	Site Location	Date Issued
101	104B	S L McClintock	U240101	Discharge Permit (to Land)	Discharge primary treated domestic wastewater to land.	259 Moetapu Bay Road, Moetapu Bay	22/02/2024
102	104B	M F and R M Doherty	U240043	Discharge Permit (to Land)	Discharge secondary treated domestic wastewater to land via a new onsite wastewater system.	172D Wither Road, Blenheim	22/02/2024
103		Longfield Farm Limited	U230398	Water Permit (Take Water) (x2)  Water Permit (Use Water) (x2)  Water Permit (Divert Water)  Land Use (River Surface Bed Activity)	Abstract A Class Wairau River FMU water up to a maximum rate of 3585 cubic metres per day from an infiltration gallery.  Abstract C Class Wairau River FMU up to a maximum rate of 5000 cubic metres per year from an infiltration gallery.  Use water for the irrigation of up to 95 hectares of vineyard and up to 25 hectares of crops and pasture.  Use water for ancillary uses on Lot 1 up to a maximum of 12,000 cubic metres per year on Lot 1.  Temporarily divert the Wairau River to provide for the construction of an infiltration gallery.  Install, maintain and use an infiltration gallery and connecting irrigation mainline within the bed of the Wairau River.	4437 State Highway 63, Wairau Valley	22/02/2024

	Delegation	Consent Holder	Consent No.	Consent(s) Issued	Proposal	Site Location	Date Issued
104	104B		U230398 Continued	Land Use (Activity) (x2)	Install and maintain irrigation infrastructure within the road corridor adjacent to the site legally described as Lot 1.  Undertake earthworks within the road reserve and to construct access to the active Wairau River and to install and maintain irrigation infrastructure within the road corridor.		
105	104B	Weta Estate Limited	U230378	Land Use (River Surface or Bed Activity)	Undertake bank protection works including constructing low level snub groynes, beaching gravels and vegetation removal and establishment in and adjacent to the Wairau River, on and adjacent to Lots 1 – 5.	4334 State Highway 63, Wairau Valley	22/02/2024
106	104B	Marlborough District Council	U230097	Discharge Permit (to Land)	Discharge tertiary treated municipal wastewater from the Seddon Sewage Treatment Plant to land on the Awatere Golf Course and MDC and Waka Kotahi owned land adjacent to the State Highway 1 and the Main Trunk Railway Line.	Seddon	22/02/2024

	Delegation	Consent Holder	Consent No.	Consent(s) Issued	Proposal	Site Location	Date Issued
107	104B		U230097 Continued	Discharge Permit (to Water) (x2)	<p>Discharge tertiary treated municipal wastewater from the Seddon Sewage Treatment Plant to Starborough Creek at times when the capacity of the storage pond is exceeded, and soil conditions are not suitable for irrigation.</p> <p>Continue to discharge treated municipal wastewater from the Seddon Sewage Treatment Plant to Starborough Creek at the current level of treatment until the construction of the treatment plant upgrade and land application system are completed and fully operational.</p>		22/02/2024
108	104B	Okiwi Bay Residents Association	U240127	<p>Water Permit (Take Water)</p> <p>Water Permit (Use Water)</p>	<p>Continue to abstract water from Ruataniwha Stream via an existing intake located on Lot 2 up to a maximum rate of 142 cubic metres per day.</p> <p>Use water for a community domestic water supply to 220 residential properties as well as community and commercial facilities in Okiwi Bay.</p>	Okiwi Bay, Croisilles Harbour	23/02/2024

Record No. 2448748