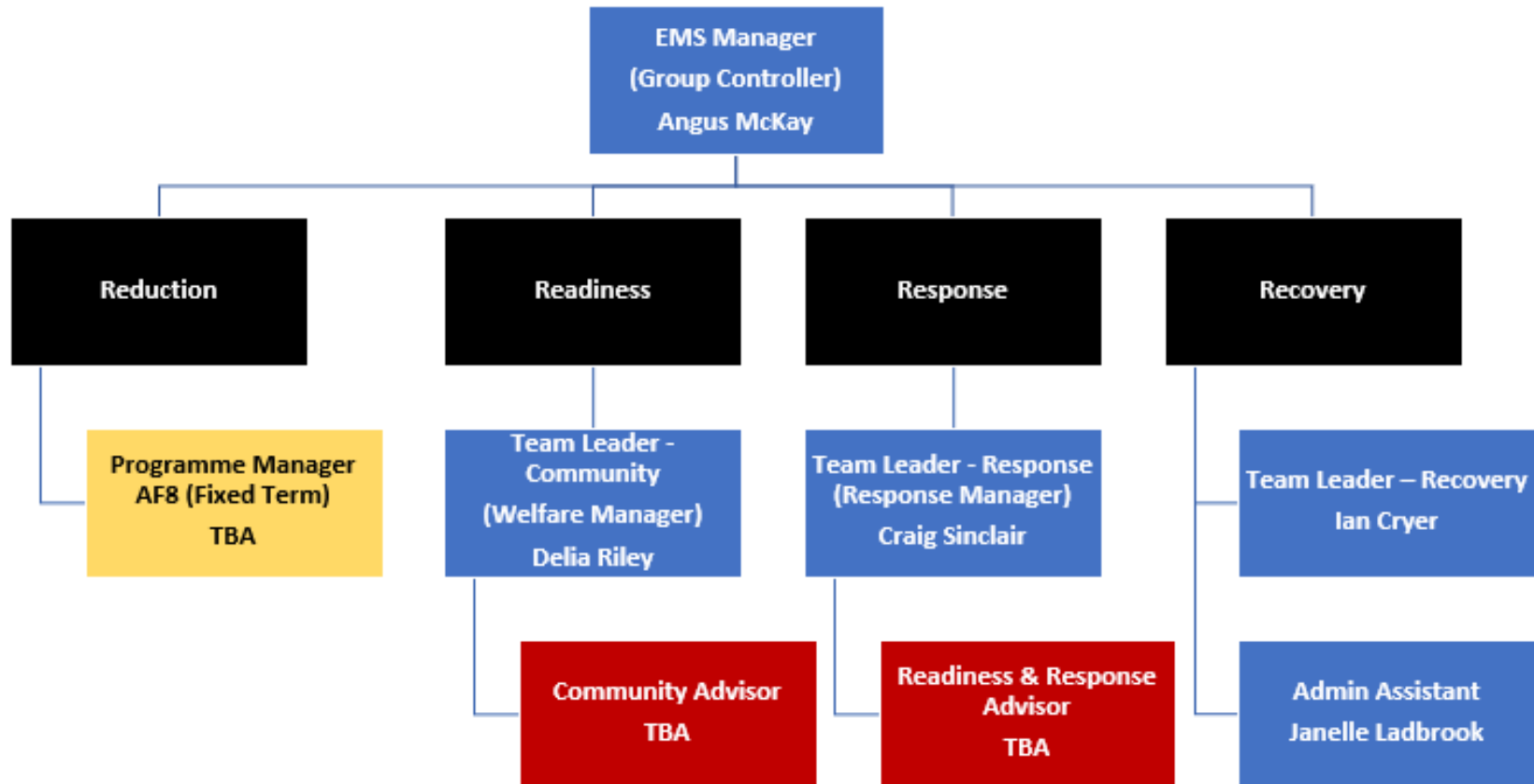




EMERGENCY MANAGEMENT
SOUTHLAND
Te Rākau Whakamarumarū Murihiku

South Island CDEM Conference

Emergency Management Southland
Update



Our Structure

Note: Restructure to align with four R's

Highlights from 2017/18

- AF8
- Fuel plan
- Collaboration on Air Plan with Otago
- The 2017 South Island Conference





Readiness

- Refreshing community engagement
- Resilience fund project community engagement network
- Supporting MPI with Mycoplasma Bovis
- Public education big and small

Highlights from 2017/18

Response

- Tiwai Fire
- Rain Event – Loss of Pyramid Bridge
- MPI M. Bovis Assistance



Recovery

- Incorporating Strategic Planning for Recovery Amendments
- Business Continuity Planning
- Recovery Plan



Recovery Plan

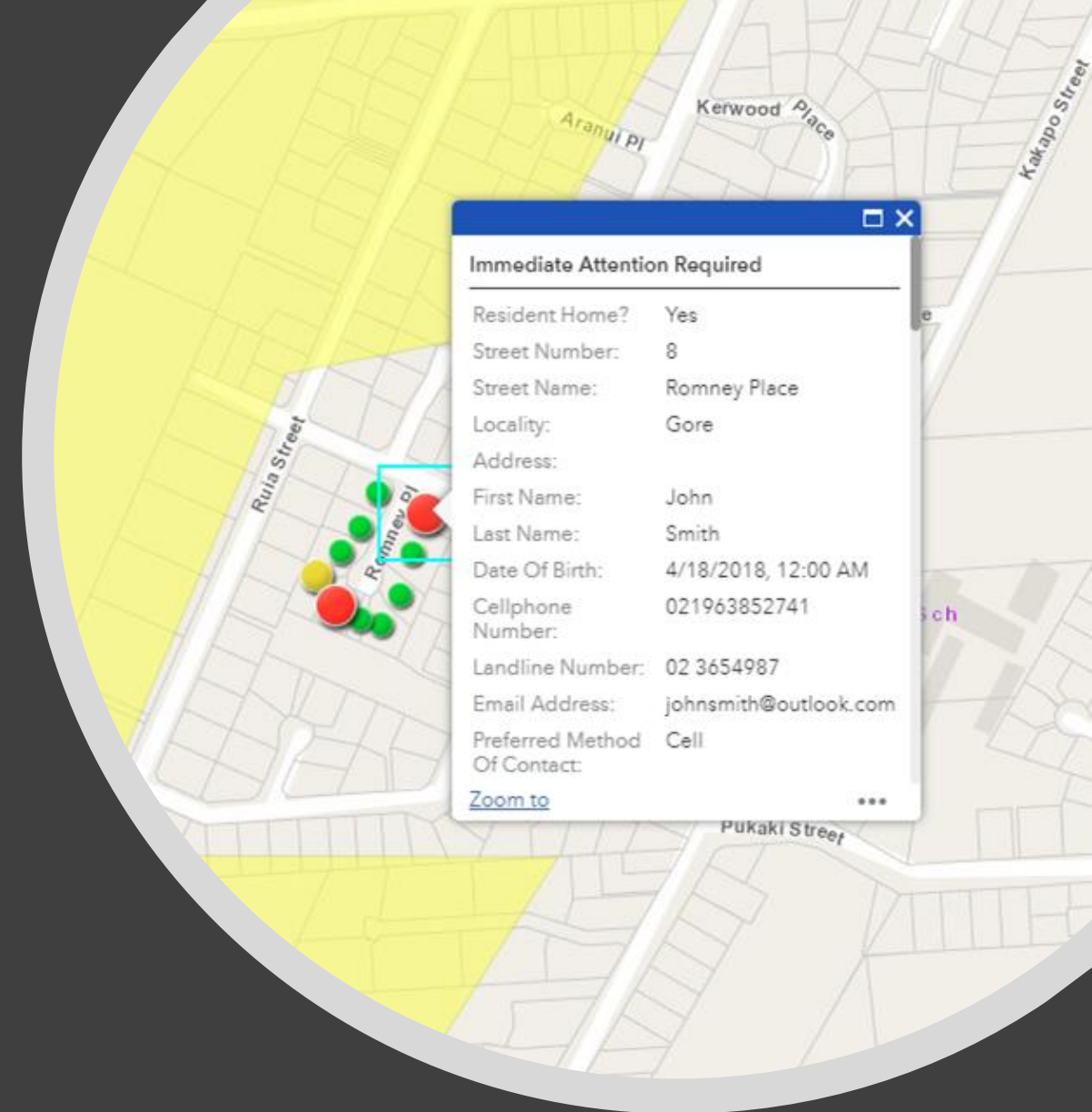
- Funding & Finance
 - No formalised cost coding process – Issues for cost recovery / visibility
 - Lack of delegations for Recovery Managers – Pre Approved Funding Bands
 - Enhanced reporting to Councils

Example: Kaikoura seeking Salary Opex funding from lotteries commission for fixed term staff that had been hired for Recovery



Recovery Plan

- Simplification
 - Division of Responsibility: Councils & Recovery Offices
 - Streamlined Data Collection – Response Data feeds Recovery Data



Questions??