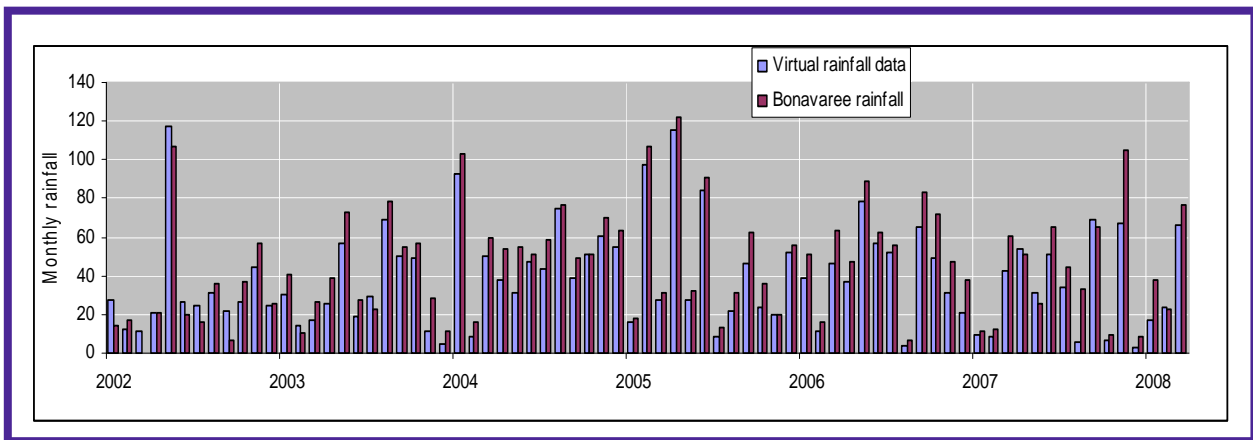


Variability and trends in the climate of South Marlborough



Bonavaree rainfall records for 2002 to 2008 compare closely with the National Institute of Water and Atmosphere (NIWA)'s virtual climate data series at the nearest grid point, as shown in the figure below. This enables the reconstruction of the Bonavaree rainfall record going back to 1960. Data illustrating the record from 1960 will be presented.

At Grassmere, average annual rainfall for the current decade so far (2001 to 2007), at 481 mm, is likely to be lower than all other decadal rainfall averages since 1890. Features of this data series will be shown.



NIWA has assembled maps and data sets for the South Marlborough area, and will provide these on a hand-out CD to farmers at the Field Day. The CD includes both observed and estimated ('virtual') climate data, for several South Marlborough locations, and maps that have been created from these data. In addition to rainfall data, the information includes air and soil temperatures, soil water balance, wind and radiation, and climate maps.

It is hoped that this information will be helpful in placing the current situation into the context of the observed climate record over the past century, and for estimating the changing risks and opportunities on-farm that are likely with future climate variability and change.

This presentation and the data CD have been funded by the Foundation for Research, Science and Technology under the Envirolink scheme, under a project submitted by the Marlborough District Council.

Alan Porteous, NIWA,
National Climate Centre, Wellington.
04 386 0300
a.porteous@niwa.co.nz

