

What can't I put in the crate?

DON'T put the following items in your crate

Plastics

- NO** plastic films or bags
- NO** chippie packets
- NO** cereal liners
- NO** coffee refills
- NO** oil containers
- NO** polystyrene
- NO** meat trays
- NO** bubble wrap

Glass

- NO** light bulbs
- NO** broken glass
- NO** window glass
- NO** mirrors
- NO** ceramics
- NO** drinking glasses

Other

- NO** nappies
- NO** food scraps
- NO** flowers
- NO** paint and rope
- NO** cups, plates, saucers
- NO** toys
- NO** fibreboard

Paper/card

- NO** painted or waxed paper
- NO** wrapping paper
- NO** drink cartons
- NO** milk cartons

NO hazardous material containers
eg; pesticides, oil or toxic chemicals

For more information on recycling go to:
www.marlborough.govt.nz

Marlborough's Other Recycling Facilities

Transfer Stations

The transfer stations located in Blenheim, Picton, Havelock, Rai Valley, Wairau Valley and Seddon will accept whiteware, scrap metal, and waste oil (charges apply).

Re-use Centre

The Blenheim Re-use Centre accepts donations of items suitable for resale. You can also drop these items at any local transfer station. Additional reuse facilities are available at the following transfer stations:

Picton, Havelock, Rai Valley, Wairau Valley and Seddon.

Bargainhunters'
Bonanza!



E-waste Collection Facility

The Blenheim E-waste facility accepts unwanted electronic items for recycling. You can also drop these items at any local transfer station (charges apply).

E-Waste



What can you take to the
E-Waste Collection Facility?

Salvage Yard

The Blenheim Salvage Yard accepts donations of items suitable for resale. You can also drop these items at any local transfer station (charges apply).

Greenwaste Acceptance Facility

The Greenwaste Acceptance Facility on Wither Road in Blenheim will accept a range of greenwaste materials suitable for composting (charges apply). Grass clippings are also accepted at this facility and sent to landfill for disposal (charges apply).



MDC

15 Seymour Street
PO Box 443
Blenheim 7240
NEW ZEALAND

Ph +64 3 520 7400
Fax: +64 3 520 7496
Email: mdc@marlborough.govt.nz
www.marlborough.govt.nz

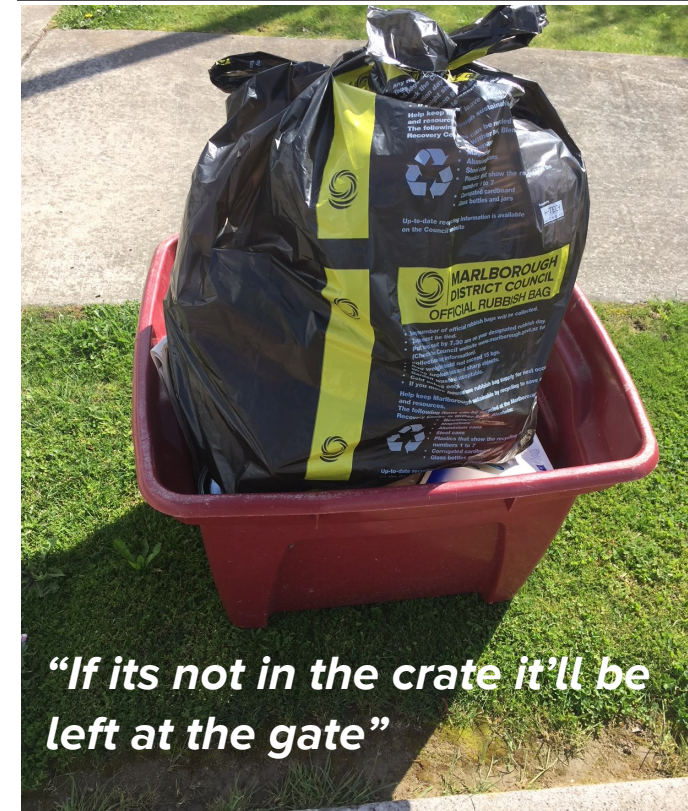


MARLBOROUGH
DISTRICT COUNCIL



Only Marlborough

KERBSIDE RECYCLING COLLECTION



"If its not in the crate it'll be left at the gate"

Important Information for Households

- "What do we recycle?"
- "What don't we recycle?"

The collection vehicle does not always follow the same route so ... please place your crate kerbside by 7.30 am on collection day.

The Recycling Market

The recycling market is based on the supply of and demand for contamination free, recyclable products. With your help we can ensure that Marlborough continues to generate quality material to sell into this market.

The Collection Vehicles

The collection vehicles, operated under contract to Council, allow materials to be sorted as the vehicle travels. The body of the vehicle is divided into a number of compartments for the storage of various materials.

The Resource Recovery Centre

The collection vehicles deliver the sorted materials to the Resource Recovery Centre at Wither Road in Blenheim. Here they are put through a further quality control process prior to baling ready for resale to suitable recycling processors.

Windy Days

Pack your crate so that lightweight material is weighted down with heavier items placed on top.

What can I put in the crate?

DO put the following items in your crate

Glass Bottles and Jars

These should be unbroken and washed out.



Plastic Containers

Plastic material displaying recycling symbols 1 to 7 can be accepted. Everything should be washed out. Plastic bottle caps/lids should be removed and placed in crate separately.



Metal Cans and Tins

Steel and aluminium cans, metal lids from jars and clean aluminium foil can all be accepted. Everything should be washed out..



Moving House?

Leave the recycling crate behind; it belongs to Council and must be left at the property it was delivered to.

What can I put in the crate?

DO put the following items in your crate

Newspaper

Newspapers can be accepted but make sure you pack it well in the crate to stop it blowing away.



Other Paper & Glossies

Other paper and glossies can be accepted but make sure you pack it well in the crate to stop it blowing away.



Cardboard

Flat packed cardboard and egg trays can be accepted but make sure you pack it well in the crate to stop it blowing away.



Excess Recycling

Excess recycling can be taken to the Resource Recovery Centre in Blenheim or the Picton Transfer Station.