

# Inter-island Resilient Connection Project

---

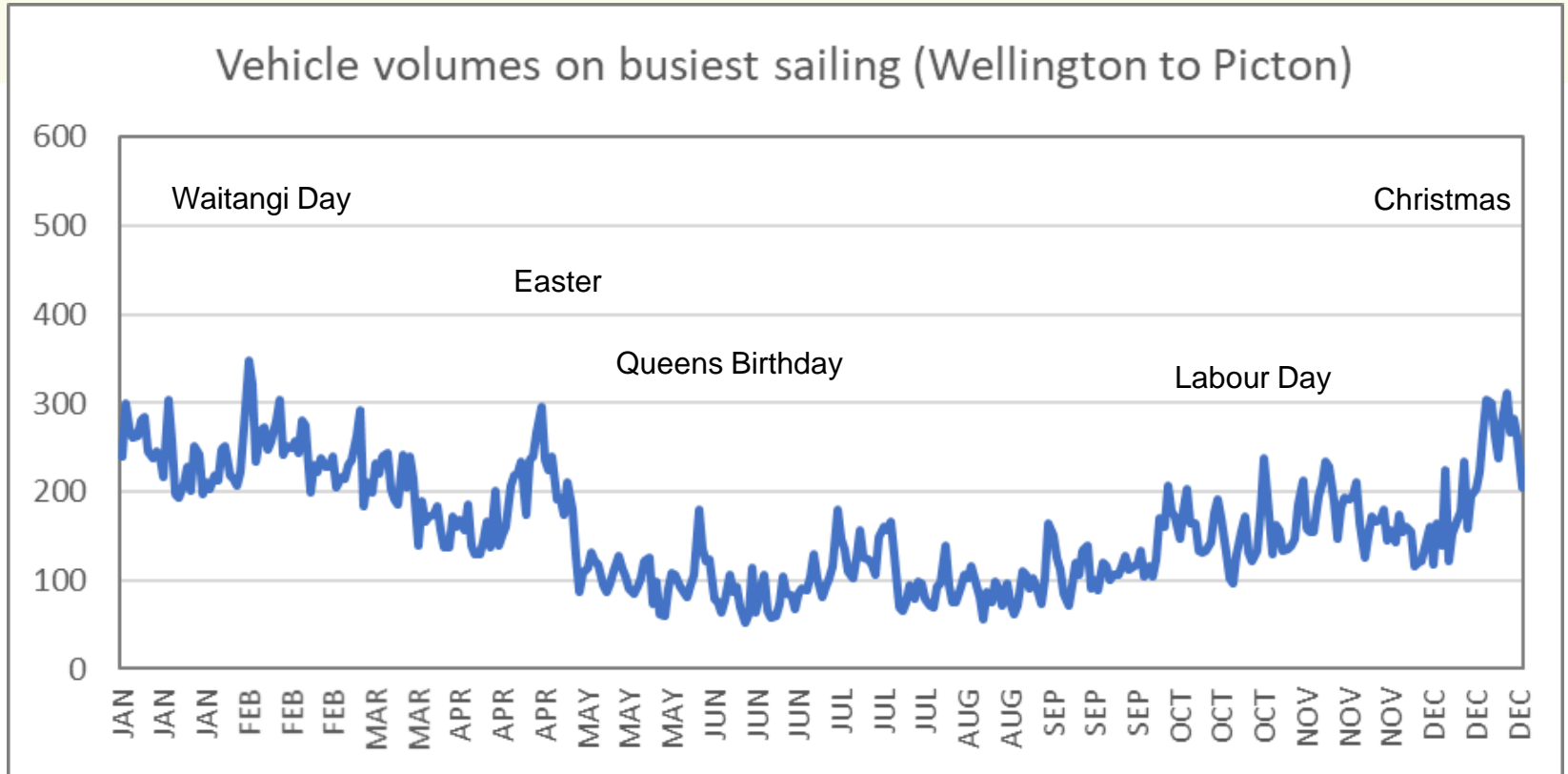
## Transport Changes in Picton

January 2022

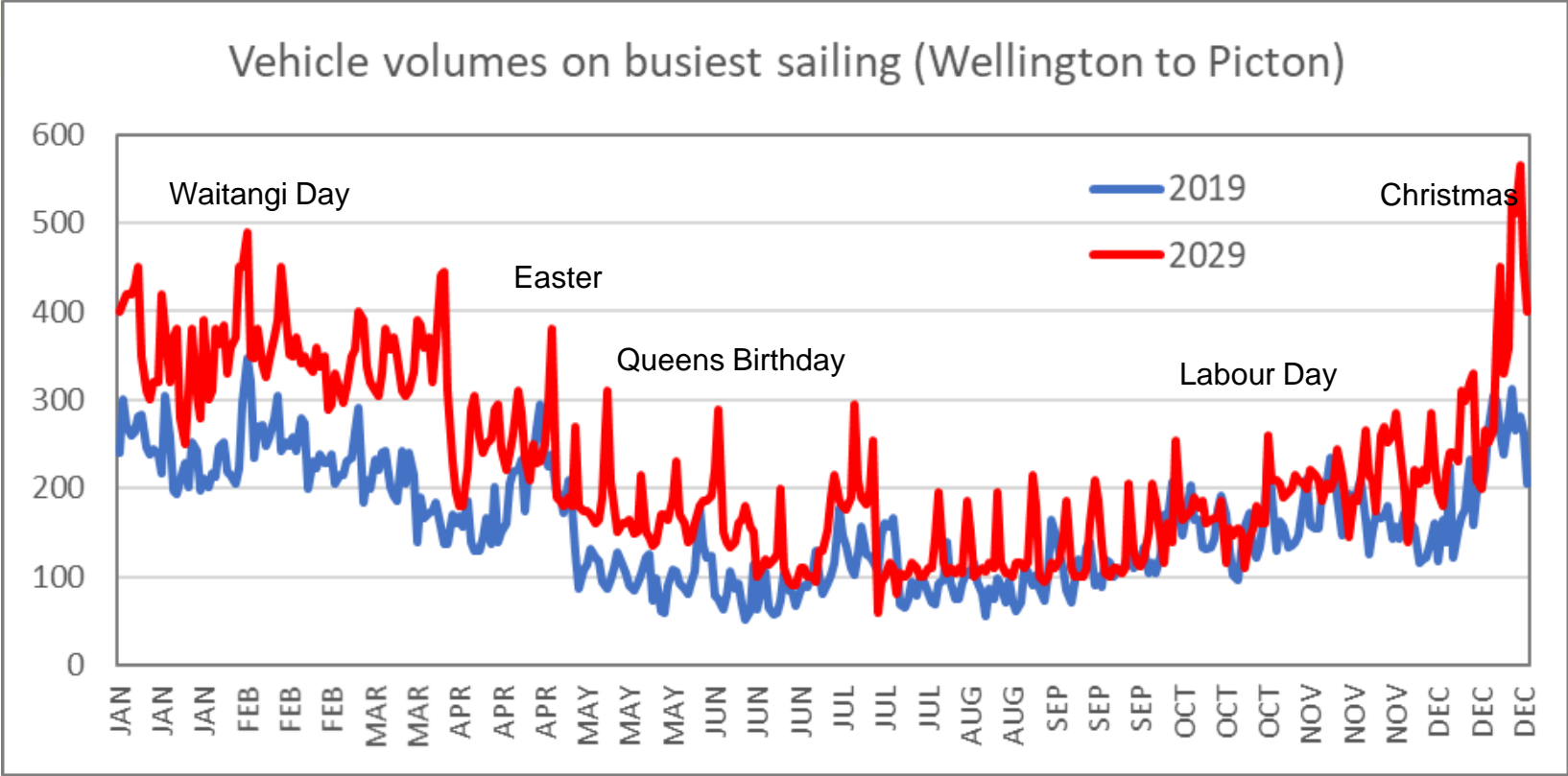
# Existing Operations



# Existing (2019) Interislander Vehicle Loadings



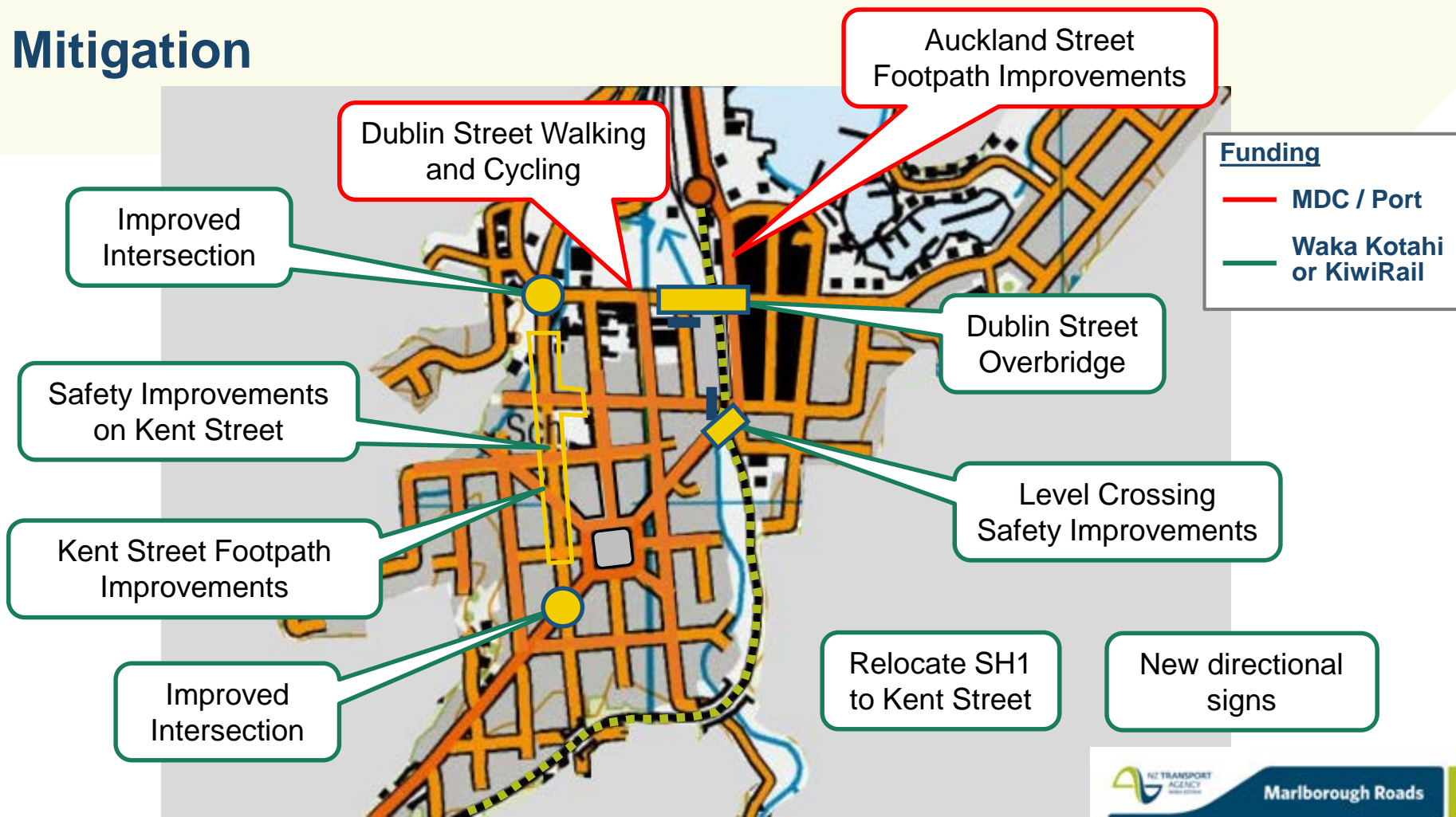
# Estimated Future Interislander Vehicle Loadings



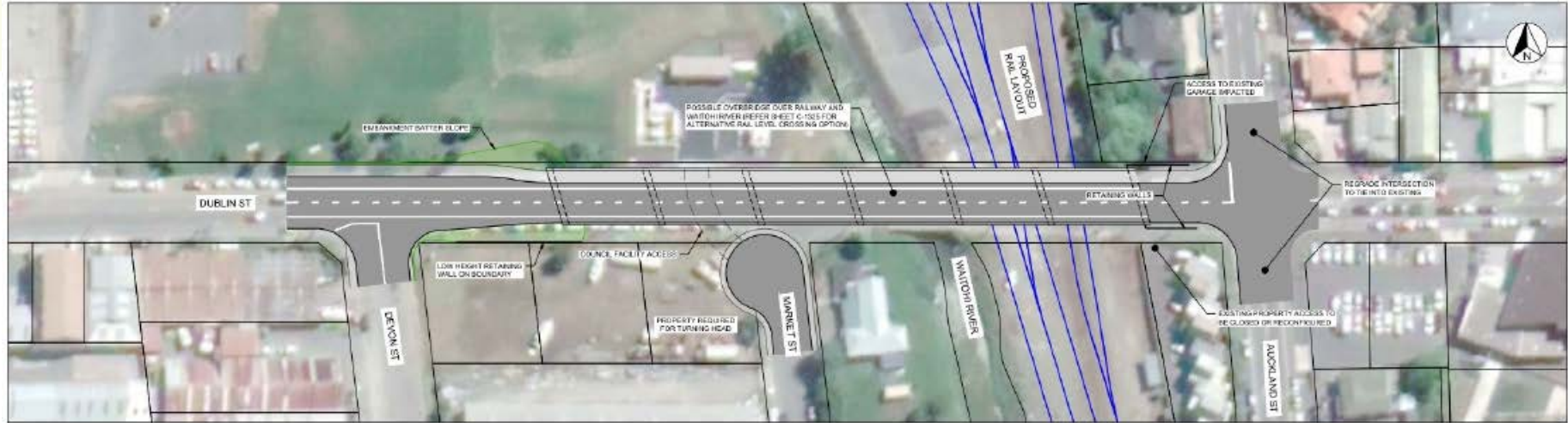
# Future Operations - Typical



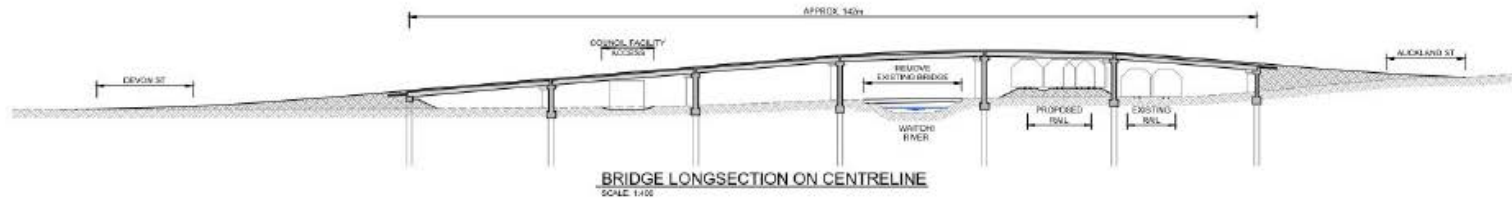
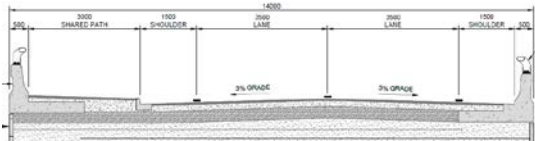
# Mitigation



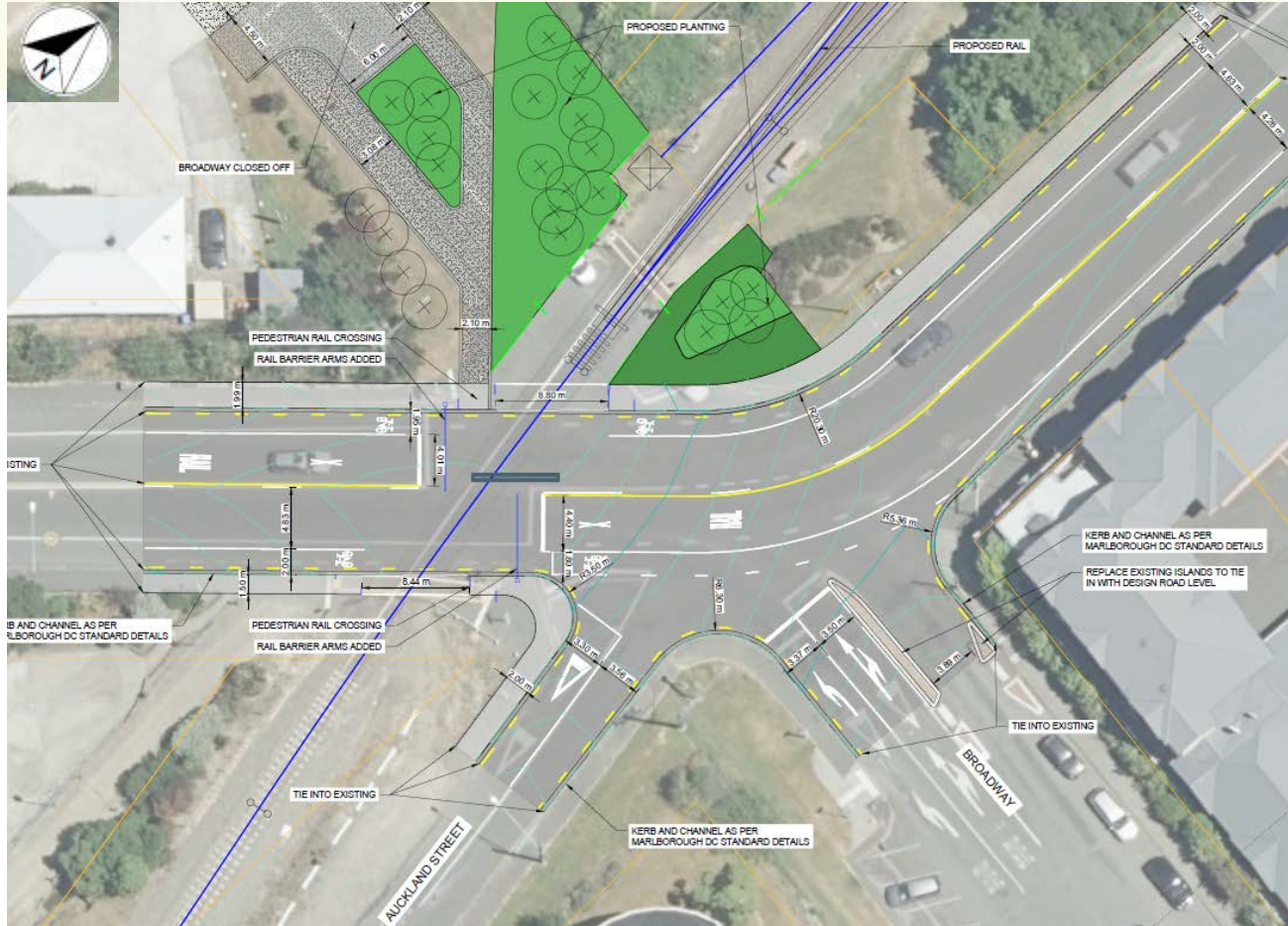
# Dublin Street - Future



**BRIDGE PLAN**  
SCALE: 1:500



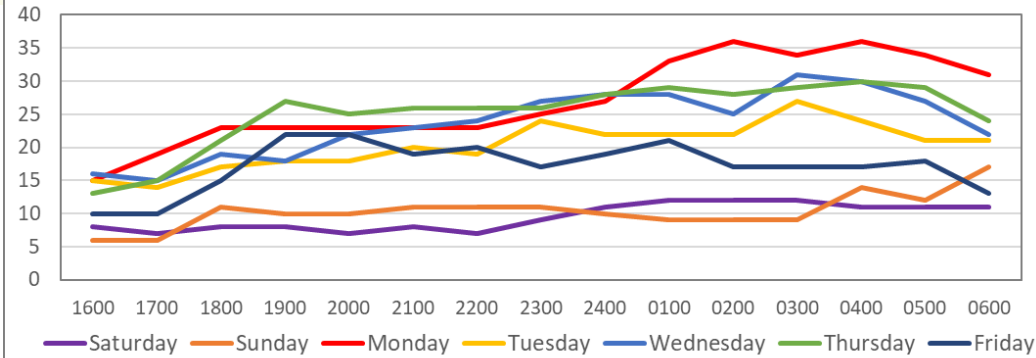
# Wairau Crossing Safety Design



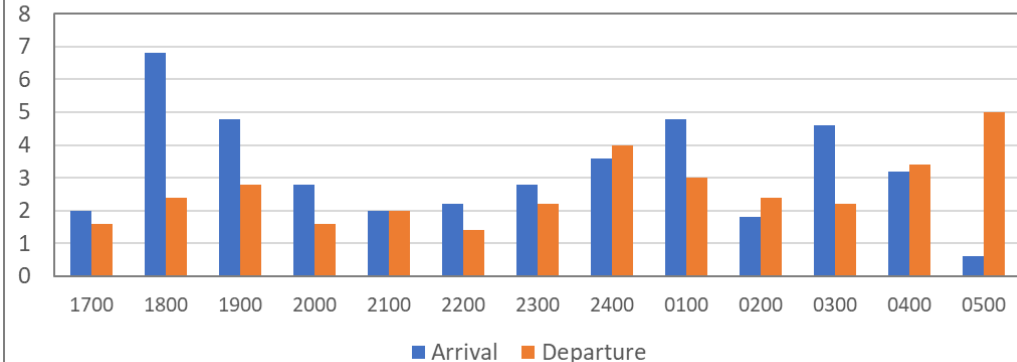


# Overnight Truck Parking

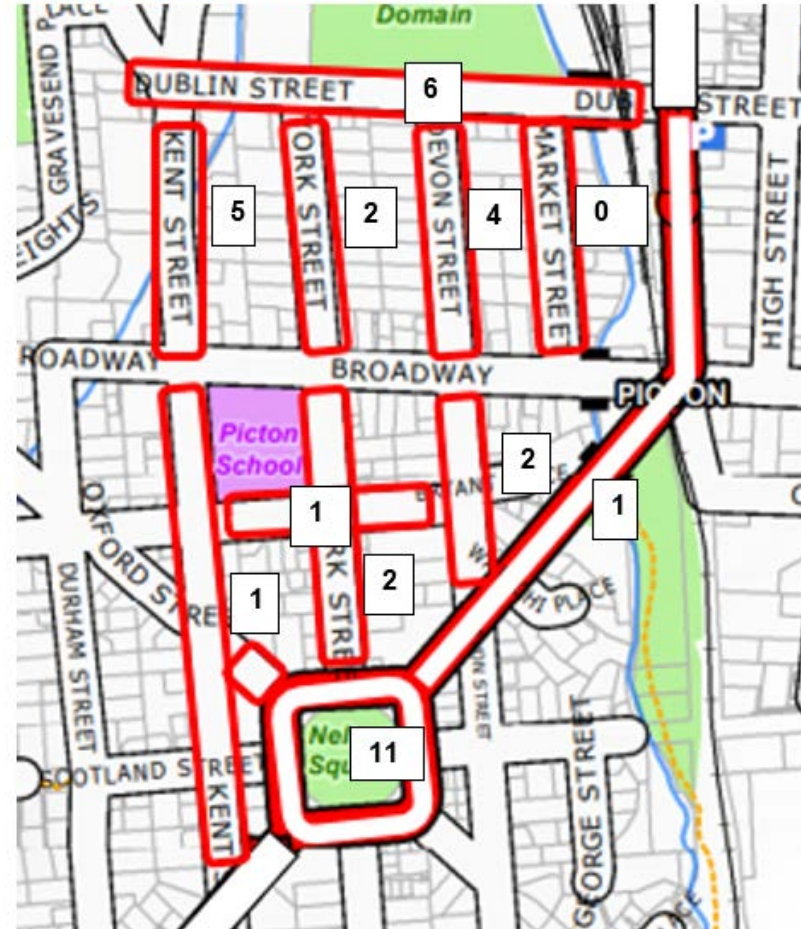
Total Trucks Parked in Study Area



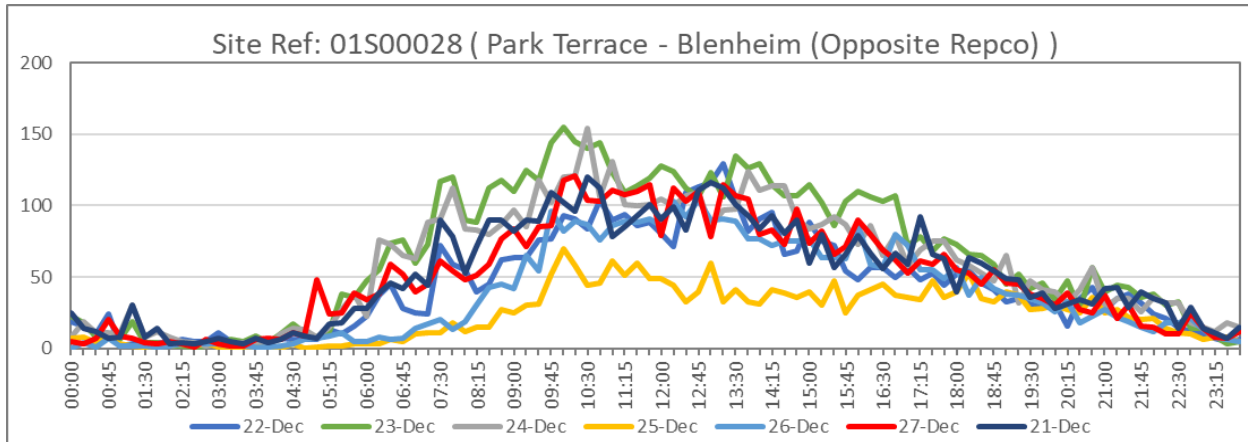
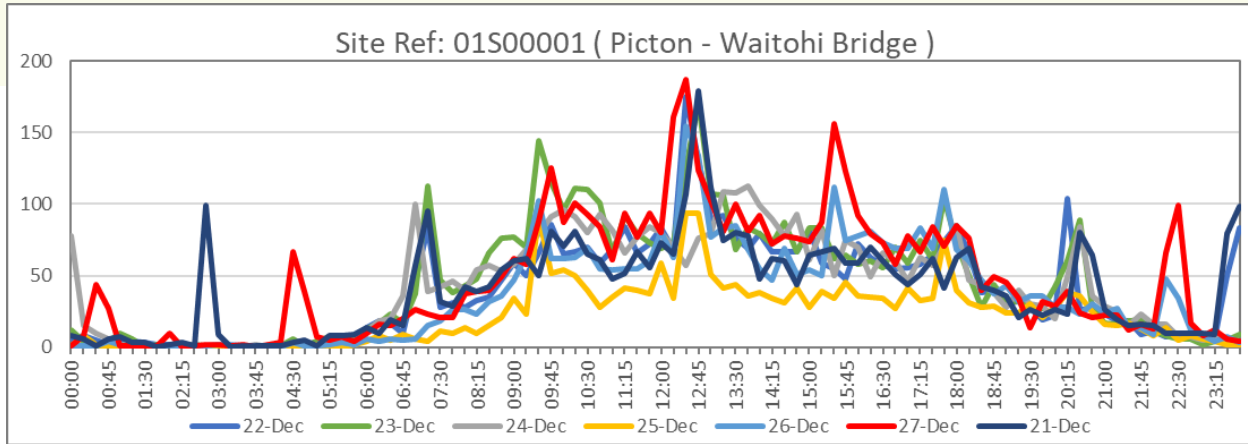
Arrivals and Departures



Truck Occupancy - Monday 02:00

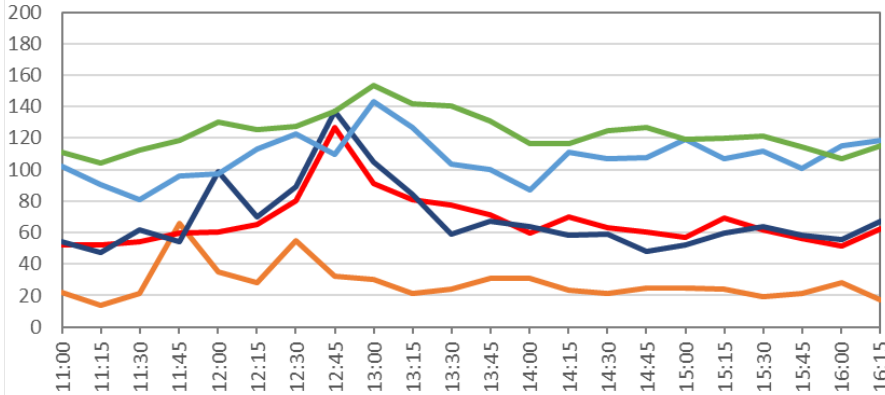


# Existing Effects further from Picton

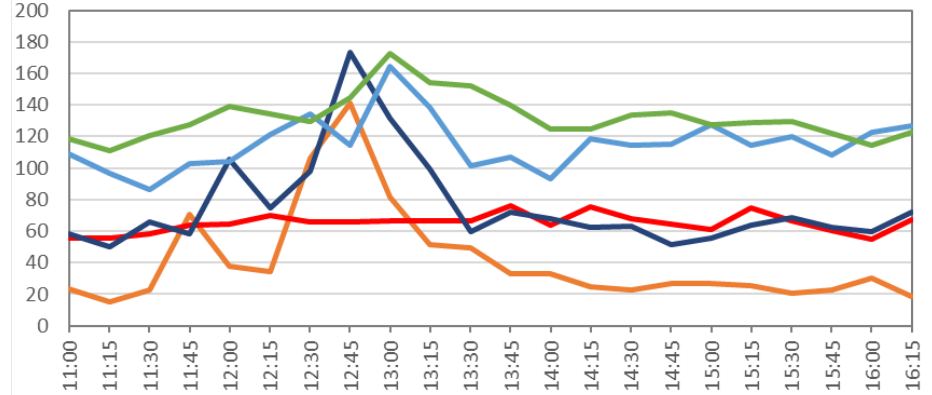


# Estimated Effects of Larger Ferries

March- 2019

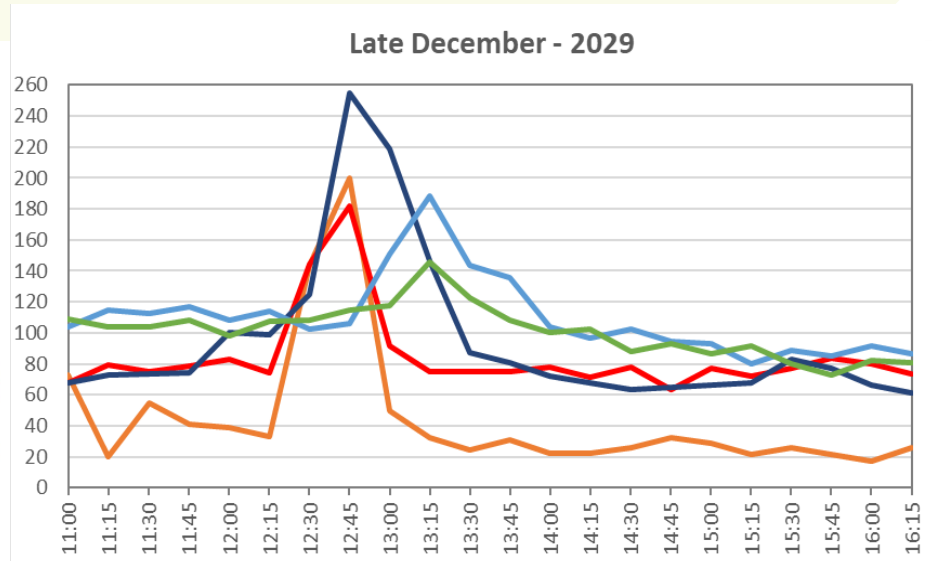
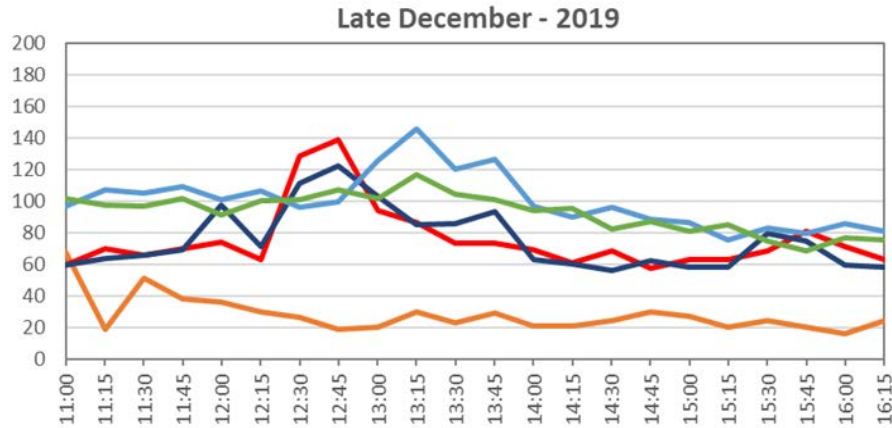


March- 2029



— Kent Street   
 — Auckland Street   
 — Koromiko   
 — Opawa   
 — Park Terrace

# Estimated Effects of Larger Ferries



— Kent Street   
 — Auckland Street   
 — Koromiko   
 — Opawa   
 — Park Terrace

# Mitigation

