



Rai Valley Community Emergency Response Plan 2021



Top tips

Take note of natural warning signs. These are your first and best warning for any emergency.



Note that Marlborough does not have civil defence sirens. Fire sirens are not used to warn of a civil defence emergency.

Stay safe, stay informed

We all need reliable information in an emergency. Here's some of the ways you can get the information you need.

Emergency Mobile Alert (EMA): The Emergency Mobile Alert system enables messages about emergencies to be sent by authorised emergency agencies to capable mobile phones. The alerts are designed to keep people safe and are broadcast to all capable phones from targeted cell towers.

Radio: Listen to the radio for updates and warnings. If you don't have power, use a battery powered radio, a car radio or listen in online.

Marlborough CDEM can broadcast live on Brian FM in an emergency. For Rai Valley listen to Brian FM on 100.1FM or 105.9 (Okiwi Bay) or listen to any other available radio station.

Social media: social media is a great way to share information. Try to stick to sources that provide validated information, such as Marlborough District Council's facebook™ or twitter™ feeds or information from the National Emergency Management Agency (NEMA).

Antenno: The Antenno app from Marlborough District Council also gives you notifications and alerts about places you care about, and not just in emergencies.

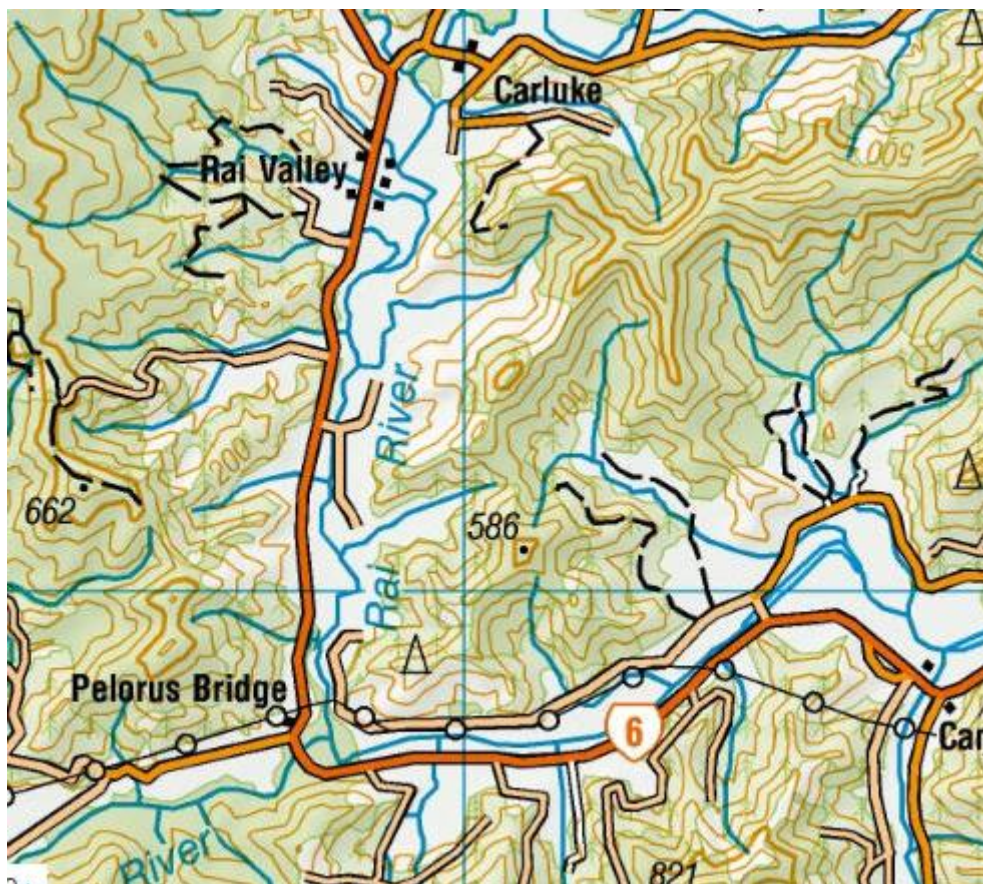
VHF radio: There is a VHF radio at Rai Valley Fire Station. This enables information to be provided to Marlborough CDEM if there are no other means of communication in an emergency.

Marlborough CDEM can also broadcast on Marlborough Nelson Marine Radio Channels 63 and 65. Avoid using these channels in an emergency unless life is at immediate risk; every time you use that channel, someone else can't.

Community response planning

In an emergency, people in Rai Valley may need to support themselves for up to 10 days before assistance arrives. If our community is well-prepared, we're more likely to be able to look after ourselves and others in an emergency. This plan contains:

- Information about hazards and risks that could affect us
- A short description of Rai Valley and our people
- Information about assets and resources
- Advice about places where the community can gather (community emergency centres)



Source <https://maps.marlborough.govt.nz/smartmaps>

Hazards and risks

The history of Rai Valley includes references to bushfires, floods and earthquakes and these events still present a risk to the area today.

Earthquake

All of New Zealand is subject to the effects of earthquakes. Marlborough has an active fault system and could be impacted by major faults such as the Alpine Fault and an earthquake on the Hikurangi subduction zone.

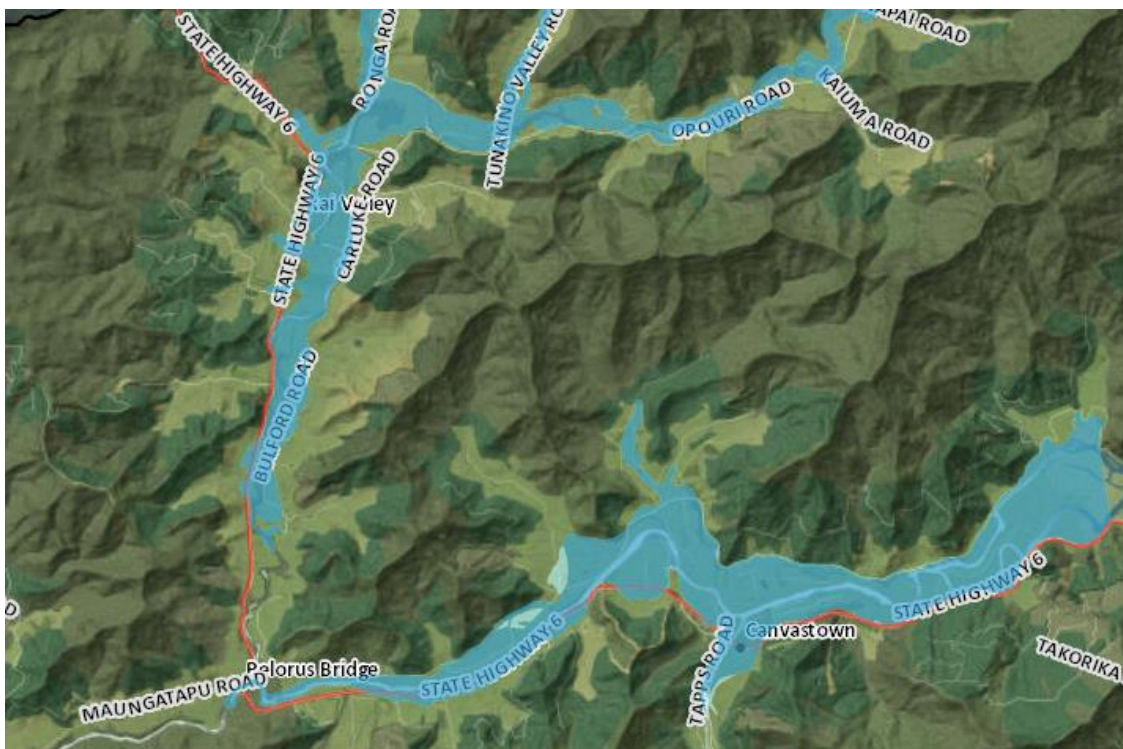
An earthquake may also result in landslides and damage to lifelines (power, water, communication, roads).

Tsunami

Rai Valley (including Pelorus Bridge) is not at risk of direct impact from tsunami. However, a tsunami that affects other parts of Marlborough could impact on the ability of people to travel to and from the Rai Valley.

Storms and flooding

Rai Valley is prone to short periods of flooding, with temporary road closures as a result. Flooding on the lower parts of the Pelorus River can also affect roads in and out of Rai Valley (see map below). A severe weather event can also lead to slips and closures on SH6 and surrounding roads.



Source: <https://maps.marlborough.govt.nz/smartmaps>

Fire

Rai Valley is surrounded by native bush and scrub. A bushfire could have a significant impact on Rai Valley, closing roads and requiring evacuation of much of the town. A bushfire near to Rai Valley could result in people evacuating into Rai Valley itself, placing extra demand on services.

Biosecurity

A biosecurity emergency impacting on farming (particularly the dairy industry) or forestry would have a severe impact on Rai Valley.

Other hazards

The impacts of COVID-19 continue to be felt in Rai Valley, affecting the local economy as well as the people of the area.

Other hazards that could affect our region (such as a terrorist attack) are set out in the Marlborough Civil Defence Emergency Management Group's plan (<https://www.marlborough.govt.nz/civil-defence-emergency-management/about-us>)

Rai Valley people

Rai Valley is on State Highway 6, on the main route between Blenheim and Nelson. It has a population of just under 200 people. The early Māori inhabitants were from the iwi Ngāti Kuia and Ngāti Apa ki te Rā Tō.

The Valley was one of the last areas explored by Europeans in northern Marlborough and in the 19th century was still densely forested. The forests attracted sawmillers and between the late 19th and early 20th century, most of the land was cleared. The cleared land has since been used for pasture, particularly for dairy.

The town provides access to some of the more remote western parts of the Marlborough Sounds that can be accessed by road, including French Pass and Tennyson Inlet.

The broad geographic area for the Rai Valley Community Response Plan is on the map above. These are not fixed boundaries, as a specific emergency may impact on a wider area.

The resident population of Rai Valley is approximately 200 people, with others coming in daily from surrounding areas to work (particularly in forestry), to attend school, in transit to and from Nelson and the bays in the Pelorus Sound. In summer, there are more visitors travelling through the area. People also visit and camp at Pelorus Bridge.

In keeping with the rest of New Zealand, Rai Valley has an ageing population including a small number of older residents who have lived in the area all their lives. Some younger families are moving in the area, either for work or to take advantage of cheaper housing. Rai Valley has a fire station and a composite school with a roll of 94 pupils, meaning that children come into Rai Valley township from the surrounding area, each day.

People who could be severely impacted in an emergency

Emergencies affect all of us. Depending on the nature, extent and timing of an emergency some people can be more affected than others. Although it can be hard to generalise, such groups include:

- Children at school, particularly those who have parents living or working outside of Rai Valley
- Older people with few social connections and/or in poor health (including people with drug or alcohol addiction)
- People who work in Rai Valley and live elsewhere, but are unable to return home in an emergency

- People who are visiting or travelling through Rai Valley and become stranded by an emergency
- New residents without many resources or local networks and people already under stress
- Farmers unable to reach home to care for stock.

Our resources

Rai Valley has a range of assets ('goods and services') that can be used to support the community in an emergency.

The assets list below is included as a planning prompt, and there are inevitably other resources we have available to us.

We also have a community with a wide range of skills that make us resilient in the face of an emergency.

Assets

This is an indicative list only. Not all these assets will be available or accessible in an emergency and some are dependent on a continued supply of electricity or fuel. In all cases, the owner/operator of the business MUST be consulted prior to the use of any of their goods or services.

It's important to remember that Marlborough CDEM does not pay for the use of assets in an emergency, unless those assets are specifically commissioned or contracted by Marlborough CDEM. .

Assets	Can be used to support...
Helicopter landing pad	Emergency transport in/out
Cool storage	Bulk food storage (dependent on alternate power for perishable supplies)
Supermarket and cafes	Local food stocks and food handling expertise
Generators Edridges, REM, individual farmers	Emergency power for food storage, medication storage Maintaining business, animal welfare
Fuel supplies Edridges, REM, Individual farmers	Maintaining infrastructure and lifelines as well as potential for public use Maintaining business, animal welfare
Heavy machinery Edridges, REM	Can be contracted by CDEM or individuals to clear roads, driveways etc
FENZ	First responders in an emergency
Rai Valley school	Independent solar power source (some homes also have solar power)
Civil defence VHF	Direct communication with Marlborough CDEM Emergency Operations

radio	Centre
Starlink ¹ internet	Internet access when other communication is limited
AEDs	Rai Valley Tavern, school, FENZ
4WD	Access to hard-to-reach places.
Community pantry, pub and café Rai Valley, Pelorus Bridge cafe	Food/household supplies Catering ability (commercial kitchens)

People

It is with the support of people in our community that we can get through and recover from an emergency.

People	Can support...
Rai Valley Library	A key gathering place for the community.
Tradespeople	Wide range of practical skills including builders, electricians, plumbers and other trades-certified practitioners.
Rai Valley Community Association	Wide knowledge of Rai Valley community, communications networks
Long-term residents	Understanding of the community including community history
Rai Valley Area School	Maintain continuity of schooling and early childhood education, as well as a network of parents and carers
Church communities	Support to each other, knowledge of community needs.

Community emergency centres

Depending on the emergency, any safety considerations and the consent of the building owner, we can open a community emergency centre at the Rai Valley Community Library at the Rai Valley Area School.

A community emergency centre is somewhere people can go for information and to be with other people. It is not a civil defence centre and should not be used for emergency accommodation. The centre will have a resource kit and a pavement sign, and will be able to seek advice and support from Marlborough CDEM if they need to.

¹ Starlink is a satellite internet constellation being constructed by SpaceX providing satellite Internet access. The constellation will consist of thousands of mass-produced small satellites in low Earth orbit, which communicate with designated ground transceivers. (Wikipedia)

There is a CDEM radio at the Rai Valley Fire Brigade building and this can be used to provide Marlborough CDEM with critical information in an emergency.

Find out more

Take a look at SmartMaps on the Marlborough District Council website for information about tsunami inundation zones around Marlborough <https://maps.marlborough.govt.nz/smartmaps>

Go to Get Ready for more information about how to get ready for an emergency at home, at work and at school www.getready.govt.nz

Read about the Marlborough civil defence emergency management group and find information that might help you <https://www.marlborough.govt.nz/civil-defence-emergency-management>.