

# Marlborough Roads Recovery

24 September 2021

# Marlborough Roads Recovery

## Overview

- Summary of Rain Event
- Progress Update
- Current Status of the Road Network
- The Recovery Team
- Changes and Challenges
- The Recovery Plan
- Prioritisation
- Questions

# Summary of Rain Event

---

24 September 2021

**17 July 2021**

Marlborough was hit by largest ever recorded flood

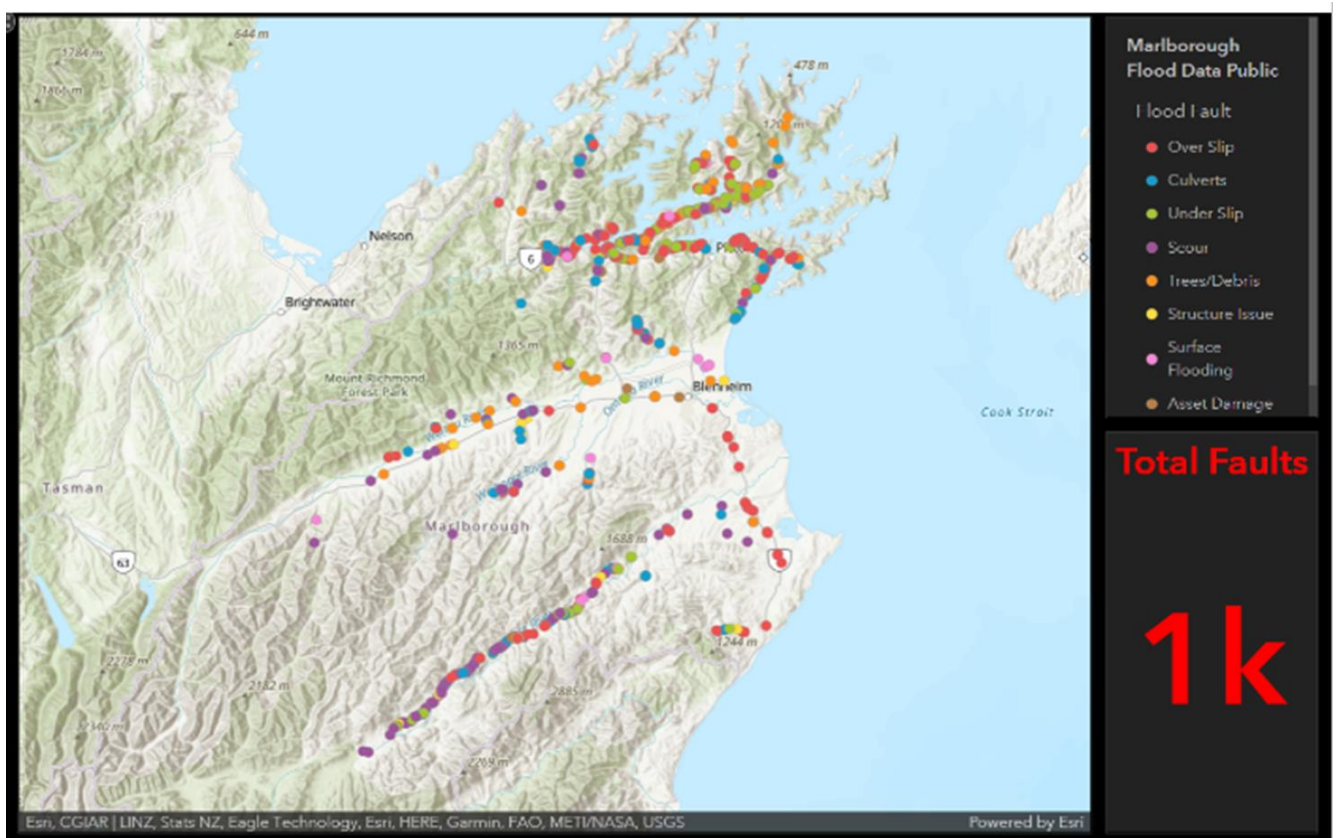
**Local State of Emergency Declared**

The State of Emergency lifted and transitioning to recovery phase from 28 July

**Response**

The response is expected to take several weeks before safe access is restored (be it at a lower level of service) across all of the network

# Summary of Identified Faults



# Scale of Damage and Response

**1,000+**  
faults in  
the network



**385**  
overslips



**207**  
underslips

**141**  
culvert  
issues



**83,300**  
Cubic metres removed  
(at 19 September)



**26**  
structures  
damaged

# Progress photos – RP5.8 dropout - between Moetapu Bay and Ohingaroa Bay



## Complex works (RP12.8 just before Mahau intersection) The Rock and Portage Heights





# Progress photos – Portage Heights to Kenepuru Heads









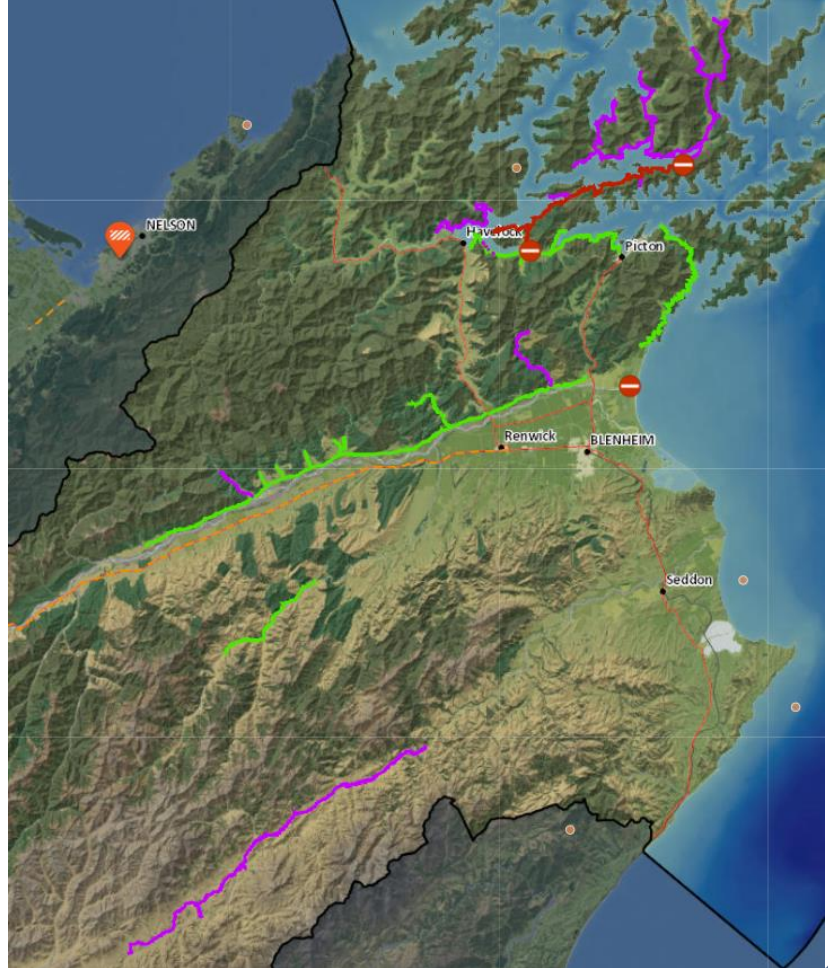
# Current Status of the Road Network

---

# Road Status

Source: [Marlborough CDEM Official Public Information Map](#)

	Road Blocks	3
	Road - No Access	11
	Road - Controlled Access (Residents Only)	30
	Road - Restricted Public Access	0
	Road - Public Access	15
	Road - Not Yet Assessed	0



# The Recovery Team

---

# Scope and Principles

## Scope

- Focus on getting all of the damaged roads back to a safe condition (Marlborough Local Roads Recovery Plan, August 2021).

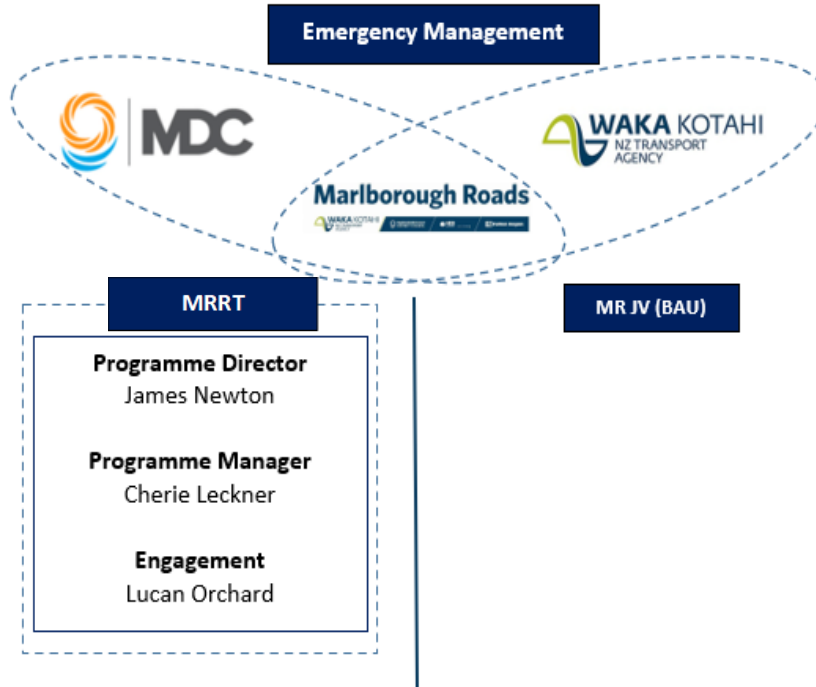
## Principles

**Preserve**  
life and mitigate  
risk

**Reconnect**  
access

**Recovery**  
to agree levels of  
services for all  
users

# Marlborough Roads Recovery Team



# Community Engagement

The network in its current state is very fragile and we need to manage community safety

- Local resident access
- Local economic activity, farming and forestry, balanced with community safety
- Road access to holiday homes/baches and restricted access is being worked on

# Changes and Challenges

---



# Changes and Challenges

We are continuing to assess and understand the scale

- **Example – The Rock**
- Why hasn't the material been moved?
- **Example – Access on Kenepuru Road?**
- Progressing from response to recovery, historic mixed messages
- **Challenges**
- Community access delays, increase in risk, technical difficulty and cost, change in access for Postie and Emergency services

# Definitions

## Road Closed / No Access & Controlled Access (Residents Only)

### Road Closed / No Access

- The Road is closed and not for use
- If you choose to use this road, you may put yours and/or others safety at risk (including the Recovery Team)
- Sections may be impassable for any vehicle
- May have controlled pedestrian access for some sites.

You may see any or all of the following:

- A controlled and monitored barrier arm (while construction work is in operation)
- Water filled barriers / concrete barriers / gates (when not in active construction)
- Signage and lights at the location of the closure.

### Controlled Access (Residents Only)

- Permanent residents
- Essential service providers including professional services with evidence of supporting welfare needs, emergency property repairs, insurance assessments
- The owner of a holiday home / bach or land
- The owner of a commercial interest
- Essential service providers of professional services supporting a commercial interest
- Emergency services.

This access does not include visitors who are hiring or renting a holiday home or bach, where rental arrangements have been made through either a property letting agency or directly with the owner.

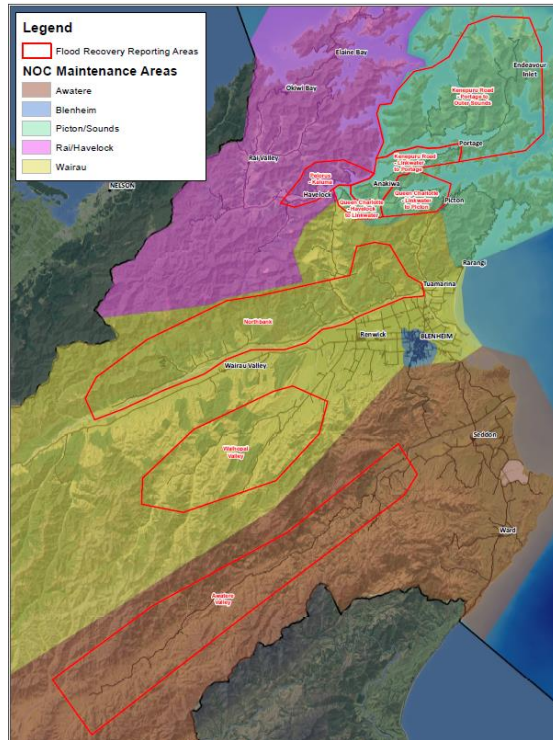
# The Recovery Plan

---

# Programme Progress

## Recovery Zones

- Queen Charlotte Drive (Havelock - Linkwater)
- Queen Charlotte Drive (Linkwater - Picton)
- Kenepuru Road (Linkwater - Portage)
- Kenepuru Road (Portage - Outer Sounds)
- Pelorus - Kaiuma
- Waihopai Valley
- Northbank
- Awatere Valley

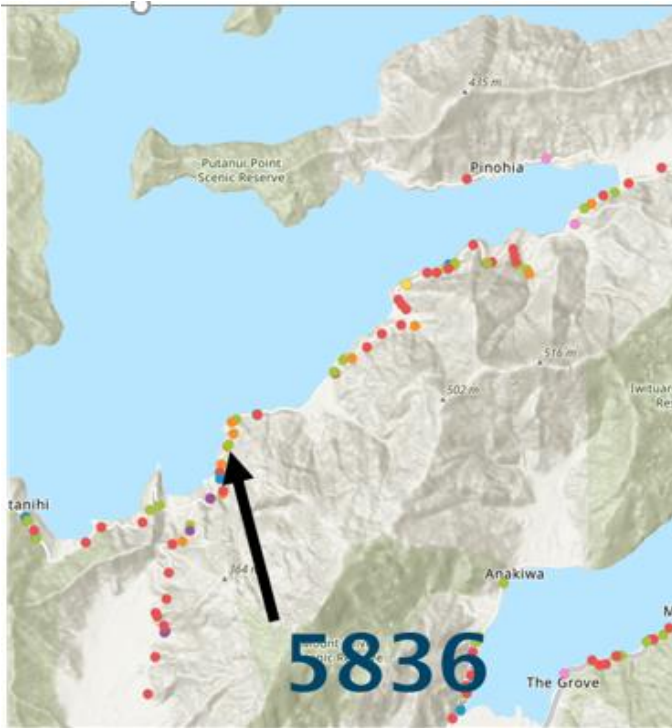


# Kenepuru Road

27 High Risk Areas & 38 Complex Sites within the Kenepuru zone



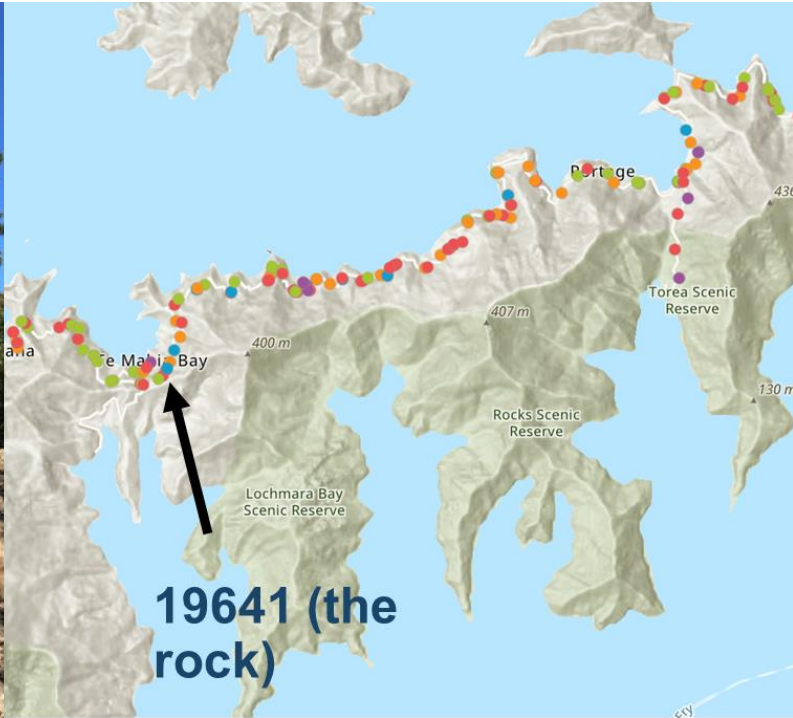
# Kenepuru Road - RP 5.8



# Kenepuru Road – RP 12.8

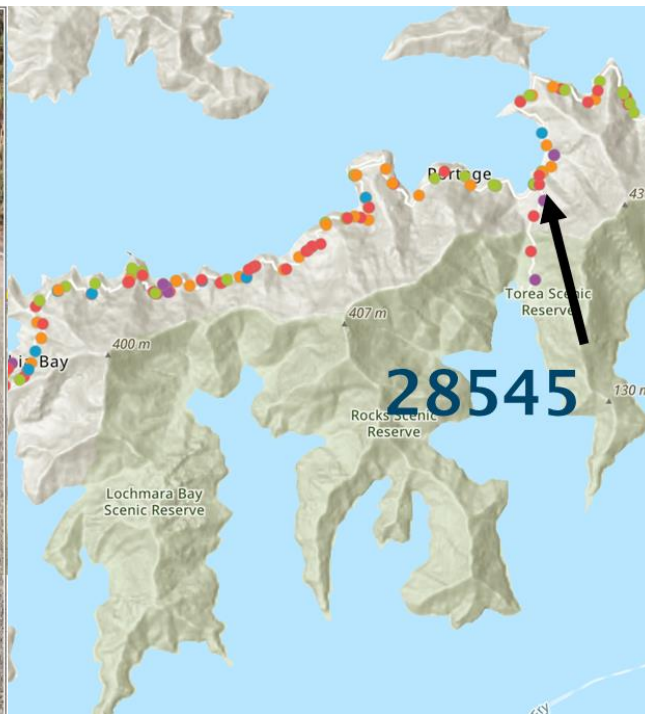


# Kenepuru Road – RP 19.6

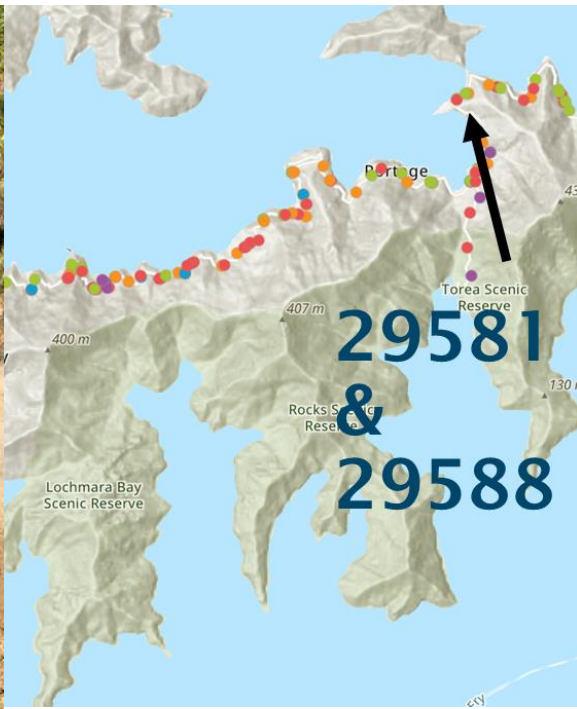




# Kenepuru Road – RP28.5



# Kenepuru Road – RP29.5



# High Level Recovery Programme

## Timeline of Access by Recovery Zones

Zone	2021					2022										
	A	S	O	N	D	J	F	M	A	M	J	J	A	S	O	N
<b>Kenepuru Rd (Linkwater - Portage)</b>																
Linkwater to Moetapu Bay Rd																
Moetapu Bay Rd																
Moetapu Bay up to RP5.8																
RP5.8 - RP12.8																
RP12.8 - RP28.5																
RP28.5 to Portage																
Torea Bay Rd to Portage																
Te Mahia Rd																
<b>Kenepuru Rd (Portage - Outer Sounds)</b>																
Portage to RP29.5																
RP29.5 - Sandy Bay																
Sandy Bay - Kenepuru Heads																
Outer Sounds																

### Key

No access - Road Closed
Controlled Access - Residents Only
Public Access (restricted)
Public Access
Recovery Complete

# Controlled Access (Residents Only)

## Kenepuru Road: Linkwater - Mahau Road

- Monday 27<sup>th</sup> – Tuesday 28<sup>th</sup> September
  - Operate under the current control
  - Grace period before new enforced controls apply from 9am Wednesday 29<sup>th</sup> September

# Controlled Access (Residents Only)

## Kenepuru Road: Linkwater - Mahau Road from Wednesday September

### Resident's Pass or Essential Service Pass

From Monday, 27 September, a Resident's Pass or Essential Service Pass will be required to pass the checkpoint at the start of Kenepuru Road at the Linkwater turnoff.

This can be applied for by emailing [recovery@marlboroughroads.com](mailto:recovery@marlboroughroads.com). We will aim to process all applications within 48 hours of receipt of all required information. Passes to travel past Mahau Road are not available at this time.

---

From Monday, 27 September, a pass will be required for Kenepuru Road (from Linkwater to Mahau Road), and Moetapu Bay and Mahau roads.

#### Marlborough Roads



Recovery (2021-2022)

Marlborough Roads  
Recovery Team  
PHONE: 0800 213 213

# Residents

PASS NUMBER: 0015

NAME: John Smith  
CONTACT NUMBER: 021 111 111  
VEHICLE REGISTRATION: XXX111  
PASS VALID: x/x/xxxx

PLEASE DISPLAY ON  
YOUR DASHBOARD  
AND RECORD ACCESS  
ON SITE WITH TRAFFIC  
MANAGEMENT CREWS

#### Marlborough Roads



Recovery (2021-2022)

Marlborough Roads  
Recovery Team  
PHONE: 0800 213 213

# Essential Services

PASS NUMBER: 0015

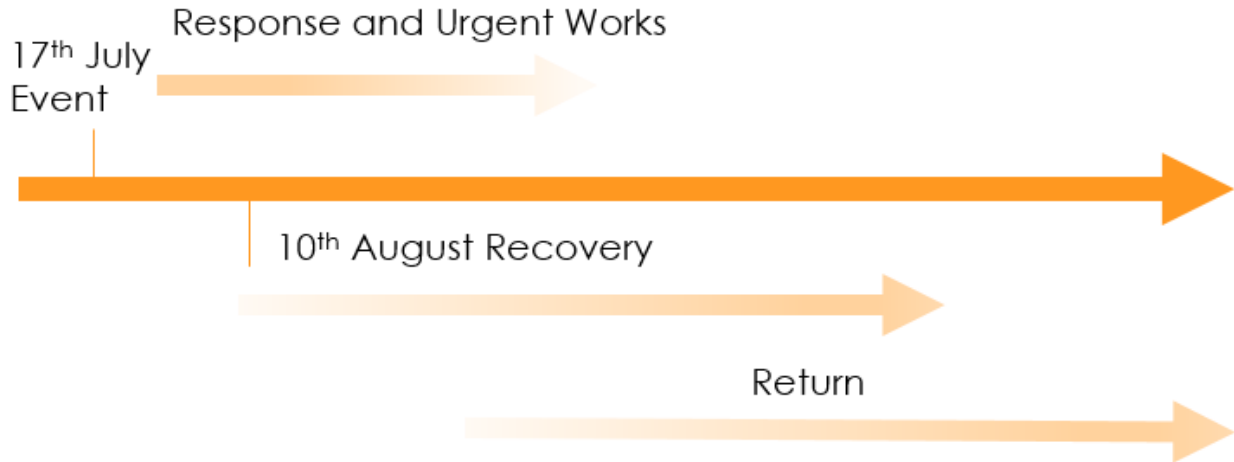
NAME: John Smith  
CONTACT NUMBER: 021 111 111  
VEHICLE REGISTRATION: XXX111  
PASS VALID: x/x/xxxx

PLEASE DISPLAY ON  
YOUR DASHBOARD  
AND RECORD ACCESS  
ON SITE WITH TRAFFIC  
MANAGEMENT CREWS

# Prioritisation

---

# Response Recovery Return



# Questions

---



- **Is work being undertaken over Labour Weekend and Christmas school holidays?**
  - The Recovery Team will not be working Labour weekend (except for inspection and guard house)  
Teams will leave Fri 22 Oct and return Tues 26 Oct
  - The Recovery Team will break for 3 weeks at Christmas (except for inspection and guard house) Most likely 23 Dec to 17 Jan  
This is dependent on programme progress at the time, we may need to start back 10 Jan.
- **You have construction vehicles running through RP5.8 and 12.8 why are you not giving people, controlled access?**
  - We are allowing 'Controlled Access (Residents Only)' between 3pm and 9am
  - No access for all users 9am to 3pm, on weekdays, so that we can safely undertake the recovery works (may include Saturdays).
- **Are you using local contractors and consultants?**
  - Yes, we are using local contractors and consultants as much as possible

- **Will I be able to get my delivery truck into Moetapu Bay before Christmas?**
  - General building works (non-essential) will be allowed once 'Public Access (restricted)' is allowed – estimate April 2022.
- **When will a small concrete truck be able to get to Broughton Bay?**
  - Once 'Public Access (restricted)' is allowed.
- **Is there access for school children getting from Mahau to Linkwater to catch the school bus?**
  - Yes, from Monday – Please ensure you have a 'Resident's Access Pass'.
- **Class 1 vehicles are permitted in the outer sounds, what is class 1?**
  - A standard stock truck and trailer is class 1, in general terms a truck and trailer unit up to 44 tonnes on 8 axles
- **Will general maintenance continue on outer Sounds roads?**
  - Yes, a grader will be barged in as well as any other equipment needed.