

Marlborough Roads



Kenepuru Road & Associated Side Roads Update

Tuesday 7 September 2021

What we know

On 17 July, the Marlborough region was hit hard by a storm causing widespread flooding, and the Marlborough District Council (MDC) declared a local state of emergency.

The heavy rainfall caused significant slumps, landslides and debris to fall which wreaked havoc across many local roads making them impassable. Areas around Kaiuma Bay recorded up to 600mm of rain over the 48-hour period.

Due to the widespread damage, the region was granted an emergency extension to 22 September under the Civil Defence Emergency Management Act (2002). This extension includes:

- The full length of Kenepuru Road and any associated side roads
- Queen Charlotte Drive from Havelock to Picton and any associated side roads
- Awatere Valley Road to Molesworth Station and any associated side roads
- Northbank Road, including Top Valley Road and any associated side roads
- Waihopai Road from the Avon Valley Road intersection to the top of the Waihopai Valley and any associated side roads.

A Marlborough Roads Recovery Team (MRRT) has been established – to work closely with MDC and Marlborough Roads - to focus on getting the damaged roads back to a safe condition as quickly as is possible. MDC and the MRRT are working closely together to prioritise these works and communicate with the affected residents.

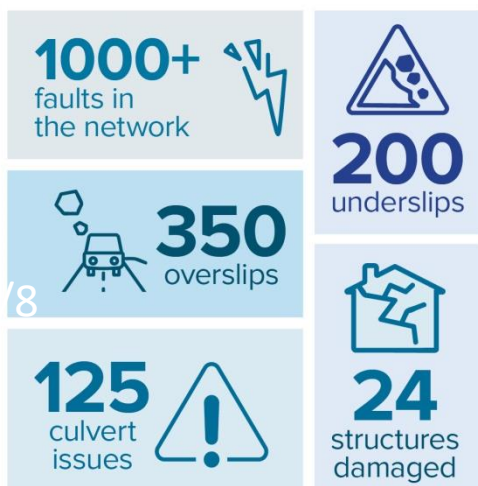
Immediately following the event, more than 350 km of roads across Marlborough were closed. Today, 74 km are still closed and 38 km have limited public access.

Kenepuru Road currently remains closed from Queen Charlotte Drive to the heads at the Titirangi intersection. People's safety is paramount. Anyone who chooses to ignore the road closures in place does so at their own risk and liability.

The cost of the *initial response* effort to repair the region's damaged roads to allow safe but limited access, and in Kenepuru Road's case restricted access for residents only, is likely to cost the region up to an estimated \$20 million. This includes Queen Charlotte Drive, Kenepuru Road and all associated side roads, Kaiuma Bay Road, the Awatere Valley Road, Northbank Road and the Waihopai Valley Road.

This response is expected to take several more weeks before safe access is restored at a basic level of service across the network. Crews are working in Kenepuru, Queen Charlotte and the Awatere Valley daily. Even once safe access is restored for residents this will still be restricted at times to enable the repair works to continue to be undertaken efficiently and safely.

The scale of the damage to date



The scale of the operation to date



As of 30 August 2021

Safety first

Your safety and that of our work crew is paramount. Public access cannot be restored until safety thresholds are met. This is a legal requirement. Just because a road appears drivable on the surface, does not mean that it's safe. Until the recovery team is confident the road is safe, it cannot be opened, not even for restricted access.

Queen Charlotte Drive, Kenepuru Road and its many side roads, are still fragile, and are at risk of further damage in heavy rainfall. The MRRT's priorities are:

- Preserve life and mitigate risk
- Reconnect access
- Recovery to agreed levels of service for all road users.

The MRRT is focussed on getting all the damaged roads back to a condition where they are safely accessible for residents.

Timeframes

On 17 August, all of New Zealand moved to Alert Level 4.

During this time, engineers finished travelling the roading network using a geographic information system GIS programme 'QuickCapture' to take photos and document a brief summary of the damage.

Since moving to Alert Level 3 restrictions, and from overnight today to Alert Level 2, the number of crews working across the district has increased and numbers are now up to pre-lockdown levels with around 130 staff back on the ground.

Engineers have completed early assessments from the initial flooding event to understand the extent of the damage.

Repair work is underway but the response is still expected to take several weeks before safe access for residents and essential services is restored across the impacted areas which includes Kenepuru Road, Moetapu Bay Road and other side roads. Securing this access in that timeframe is dependent on the weather and any further damage to the network.

Once these initial response works are complete, resident access for most areas will be single-lane light vehicle access with no towing. Public access is likely to be more than a year away for parts of the Marlborough Sounds.

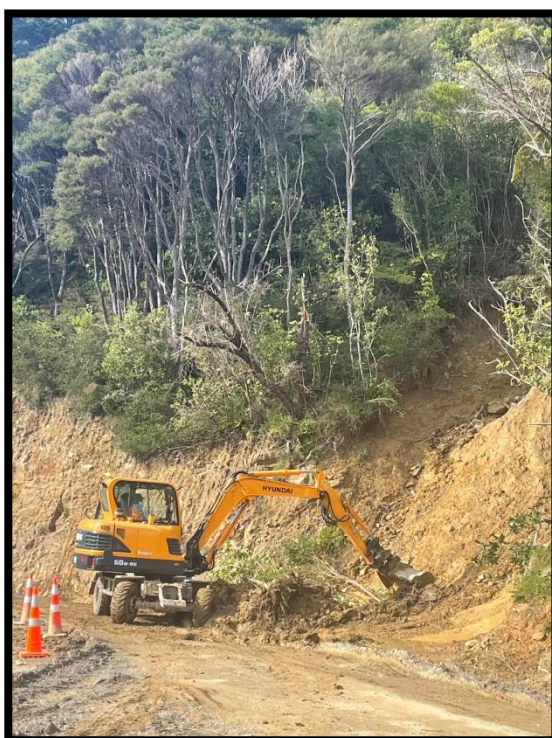
Priority areas

The statistics keep growing as the recovery effort continues – the latest tally of faults in the network is 1,100 with 49,000 cubic metres of spill material now removed.

More than 400 of these faults are on the Kenepuru Road. There are 60 complex sites identified across the network and 38 of these are also on the Kenepuru Road and 16 on Queen Charlotte Drive.

A number of key ‘corridors’ in the network have been identified regionally as high priority, as follows:

- Kenepuru Road (pictured below)
- Queen Charlotte Drive
- Akerbloms Road
- Titirangi Road
- Te Mahia Bay/Onehau Bay Road
- Torea Bay Road
- Awatere Valley Road
- Northbank Road
- Wairau Valley Road



Your welfare

We understand that this is a difficult time and 'life as we knew it' has been disrupted.

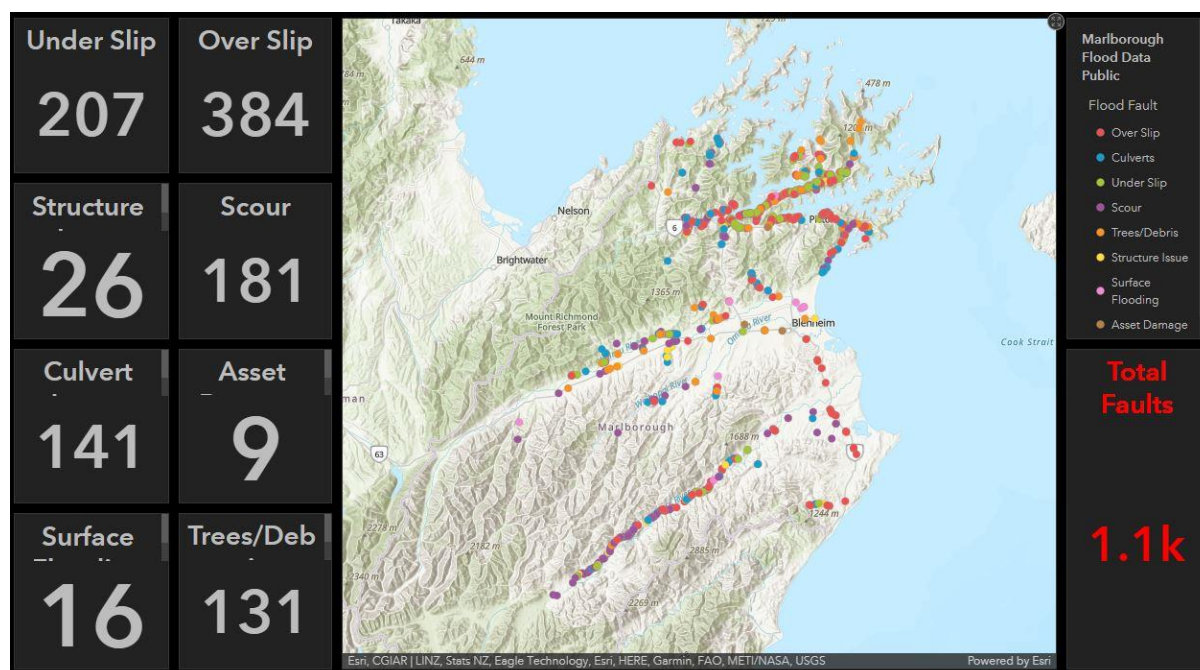
The Council's Recovery Team is looking at providing assistance and support for water taxi and barging alternatives to the closed roads.

We really want to hear from you if you need help with alternative transport solutions to the road being closed. We'd like to invite you to complete the following survey to enable us to capture the post-storm long-term support requirements for your community, including local businesses.

Please complete the survey here: www.surveymonkey.com/r/PostStormRecovery

Anyone with welfare needs associated with the July storm should contact the Council at recovery@marlborough.govt.nz

Map of faults across the network (at 2 September)



For more information

For the latest road status updates please visit our Marlborough Emergency Management Official Public Information Map before your journey: <https://bit.ly/RoadToRecoveryMarl>

For the latest roading alerts: <https://bit.ly/RoadingAlertsMarl>

Phone us: 0800 213 213 or 03 520 8024 between 8.00 am - 5.00 pm, Monday to Friday

Email us: recovery@marlboroughroads.com
