



MEDWAY ECOLOGICAL DISTRICT – PHOTO ESSAY

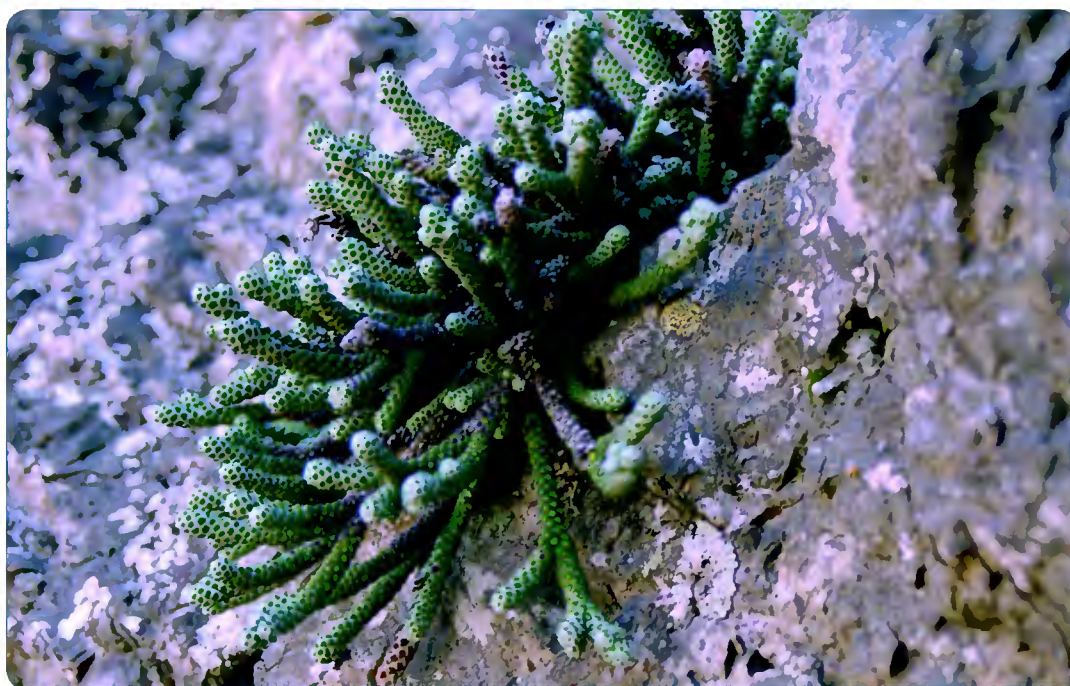


SPECIAL SOUTH MARLBOROUGH PLANTS -

Pink broom (*Carmichaelia glabrescens*) on a high rock outcrop (centre of photo). It persists there because it is inaccessible to stock and hard for feral goats to reach.

SPECIAL SOUTH MARLBOROUGH PLANTS -

Coral shrub (*Helichrysum coralloides*), an unusual plant confined to the uplands of South Marlborough. Its form is adapted to cope with extreme elements (cold, heat, drought and wind).



SPECIAL SOUTH MARLBOROUGH PLANTS -

NZ lilac (*Heliohebe hulkeana*), a small plant protected by the rocky nature of the site and exclusion of stock. This species is confined to South Marlborough and North Canterbury.



BACK COUNTRY MEDWAY ECOLOGICAL DISTRICT -

Showing its rugged nature and diversity. Fencing is not a practical option for protection except for special small features. An alternative approach is to tailor the farm practices to allow for conservation of special features alongside productive land-use.



LONE SURVIVOR -

A single lowland totara tree in the Waima Valley. This species would formerly have been widespread in South Marlborough, but now exists only as a few scattered individuals such as this. They may provide material for growing new plants that can be used in restoration planting.

KANUKA FORESTS -

Areas such as this excellent kanuka gully forest are now rare in South Marlborough. They are key sites for birds such as robins and brown creepers, for lizards and a suite of native insects. They also provide sites for native ground orchids.

