

**Minutes for Meeting of the  
Sounds Advisory Group  
held at the Chateau Marlborough on Monday, 14  
February 2022  
commencing 10.00 am**

**Present:** Cllr Faulls, Cllr Taylor, Monyeen Wedge, Eric Jorgensen, Ross Withell, Dave Hayes, Steve Murrin, Leanne Schmidt, Anton Wilkes, Andrew Jefferies, Lynley Perkins, Vic Koller

**Via Zoom: Attending via Zoom** – Ken Roush, Tim Greenhough, Rob Schuckard, Cllr David Oddie, Ned Wells, Emma Hopkinson-Young, Linda Booth

**MDC Staff Attending:** Alan Johnson, Bernadette Brooklands (Secretary)

1. **Welcome**
2. **Apologies:** - Jodi Milne, Poneke Rene, Rick Osbourne, Luke Grogan, Hans Versteegh, Chris Hayles, Oliver Wade,
3. **Correspondence: Nil**
4. **Confirmation of minutes 16 November 2021**
  - The minutes of 16 November 2021 were taken as read.
5. **Actions from the previous meeting**

|    | Action   | Person Responsible      |
|----|--|-------------------------|
| 1. | Do the shellfish toxin notifications only relate to humans or is it also relevant to wildlife? | Jodi Milne              |
| 2. | Can MDC Compliance notifications to go on Antenno App for Sounds residents to access.          | Cllr Faulls/Jamie Clark |
| 3. | Salmon Farming best practice guidelines status for Resource Consent.                           | Gina Ferguson           |
| 4. | The first item of business will be the update on SAG.  | Alan/Cllr Faulls        |

**Action Point 1**

- Do the shellfish toxin notifications only relate to humans or is it also relevant to wildlife?

Jodi was an apology today as attending a Hui, however she did email this response for today's meeting:

- MPI's public health warnings for marine biotoxins relate specifically to those toxins which affect human health. MPI and the commercial shellfish industry regularly monitor seawater for toxic species of phytoplankton and also monitor shellfish for these algal toxins.
- Despite the programme only monitoring for toxins affecting human health, some of these toxins can also affect wildlife including birds, mammals and aquatic life. There are also a range of other phytoplankton species not specifically monitored for which can cause fish kill events which have no effect on humans.

## Questions/answers

- Rick spoke of a toxin in the Sounds that is affecting birds but is not toxic to humans. This is known as the 'red tide'. Can this toxin be monitored? Ned advised that this would need to go forward to a Board and then funding for the collections etc would need to be delegated. Clr Oddie asked what causes the red tide.

**Two action points were added; 1) invite the experts to speak at our next meeting on the toxins, 2) request Jodi from MPI and Gina Fergusson MDC Compliance Manager to speak of the collaboration of the standards.**

**Action Point 2**

- Can MDC Compliance notifications to go on Antenno App for Sounds residents to access.  
Gina Ferguson and Luke Grogan are both apologies today, however, they did email their comments for the meeting:
- Comment from Luke Grogan: Harbours do utilise the Antenno App to notify the community on navigation issues where relevant. However, the CruiseGuide App also allows notifications, and we use this for a wider range of coastal issues as it is a more targeted user group.
- Comments from Gina Ferguson: It was agreed with Councils monitoring team to notify warnings using Antenno. Only registered users receive these alerts. Please encourage community members to register.  
<https://cruiseguide.co.nz/>

**Action Point 3**

- Salmon Farming best practice guidelines status for Resource Consent.  
Gina Ferguson provided the following email comment:
- An out of cycle review of the Salmon Farm benthic best practice guidelines is being considered by MPI. Guidelines do not have regulatory compliance/enforcement status unless incorporated through a condition of consent.

**Action point added to follow up the guidelines that are currently being reviewed by government.**

**1. Update on SOE report - (Alan Johnson - MDC Environmental Science Manager)**

Apologies from Hans Versteegh today. Alan Johnson spoke on the matter on his behalf.

- The MDC reports, once they have been approved by the MDC Environment Committee, do go on the Council website. The National State of the Environment Act 2015 is under review. The submissions close on the 11 March. The MDC State of Environment Report will be delayed in publication to align with a new Government review. Alan advised that under Reporting on the MDC website link, there are reports online.  
<https://www.marlborough.govt.nz/environment/coastal>  
Coastal water quality report 3 -  
<https://www.marlborough.govt.nz/environment/coastal/coastal-water-quality>  
National environment reporting review  
[Improving Aotearoa New Zealand's environmental reporting system - Ministry for the Environment - Citizen Space](https://www.marlborough.govt.nz/environment/coastal/coastal-water-quality)
- LAWA website contains the water quality reports.
- From the LAWA website - Water quality is monitored on a monthly basis at 34 sites as part of the region's state of the environment (SoE) monitoring of surface water. Two of these sites, on the Wairau River, are monitored by NIWA. Sites are located at the bottom of catchments where possible in order to take account of the cumulative effects of land-use within the catchment. Land-use pressures in the region include dairying and exotic forestry in North Marlborough and viticulture and dryland pastoral farming in South Marlborough, particularly along the Wairau plains and east coast.  
<https://www.lawa.org.nz/explore-data/marlborough-region/>

## 2. Ungulate control in the Sounds (Eric Jorgensen)

- To develop a sounds wide ungulate control will cost approximately \$80 thousand dollars. DOC can assist with some funding and RATA. The other funding could be applied for with the Lotteries Commission.
- Torea Bay will need assistance. This will be a sounds wide issue and a method needs to be found to assist this working in the sounds among other communities.
- Eric requested that any communities that are currently looking at ungulate control please contact the trust admin person who will then forward information to Andrew Macalister. See admin link below.

[info@soundsrestoration.org.nz](mailto:info@soundsrestoration.org.nz)

### Questions/Answers

- RATA foundation was the old Trust Bank and this funding goes to the top of the south for funding projects.
- Clr Taylor advised that the Waikawa Bay Residents Association is also carrying out ungulate control. Clr Taylor will link this group to Eric. Clr Faulls noted that Nakuta Bay are wanting to link with other groups to assist with removing the ungulate. **Action point noted.**
- Dave Hayes from DOC advised that ungulate control is a nationwide issue. DOC is targeting where the areas are so that future resources can be looked at.
- Alan Johnson advised that the national and local model will be beneficial to the Sound's community going forward and the model is similar to the wilding pine model.

## 3. TOR (Terms of Reference) discussion – (Alan Johnson and Councillors)

- The TOR is still in draft format. No further updates were received by the group prior to the meeting. Alan advised that Iwi will be invited to have a representation and provide feedback on the TOR.
- Clr Faulls spoke on the questions of meeting locations and asked members for their opinions.
- Clr Taylor noted that the current members should self-nominate their members. The Picton, Havelock and Ria communities have different issues and are represented well in other groups. It would not be feasible to take the senior managers from Council out to the Sounds for a meeting when they are under heavy workloads. Are there any stakeholders missing from our forum?
- Clr Oddie noted this is not a Councillor's group, it is a resident's group.

### Questions/Answers

- Monyeen Wedge suggested that Iwi need to be from Sounds-wide, so that they are represented appropriately.
- It would be disappointing for the group not to go out into the Sounds for the local community to attend.
- How big would the groups number grow if all the resident's associations attended?
- Meetings in the Sounds will more effectively to engage with the community if in the Outer Sounds areas and not in Picton or Havelock. Rangitoto ki te Tonga/D'urville Island was also mentioned by several members as an ideal location to hold a meeting in the future.
- It was suggested to have a representative from the Havelock community.
- Rob Schuckard also felt that a meeting should be held in the Sounds. It would be helpful to have this motion integrated in the TOR.

The motion Rob tabled in 2018 at Waitera Hall meeting was: *"As a matter of transparency, fairness and reflective of open governance, when Marlborough District Council invites members of SAG to participate in projects, workshops and committees of regional and national importance, full disclosure will be provided about Council's past, present and intended future participation in relation to such matters."* Seconded: Judy Hellstrom Motion: Carried.

**Action point noted that Rob puts his thoughts of the terms of references into an email to the group.**

- Members have requested that more in-depth topic information be on the agenda before it is being sent out so members can prepare for the meeting.
- Clr Faulls noted that there has been interest in the smaller Sounds communities wanting to attend SAG.
- To keep numbers down in the room, Zoom is also an option for having a representative involved.

#### 4. **3 Waters Update/Waste – (Clr Taylor)**

- Clr Taylor spoke on the 3 Waters. 26 councils including MDC have joined the group to advise government of Councils' perspective on the 3 waters review. Government is still reviewing the report.

#### Questions/Answers

- General feeling was in support of Council opposing the 3 Waters.

#### 5. **Connectivity issues in the Sounds – (Leanne Schmidt – Rural Connect NZ)**

- Leanne spoke on Rural Connect NZ who provide information and connectivity for areas in NZ/
- From their website - *Rural NZ needs to be better connected. It is not always about speed but digital quality of life. Having usable internet when and where you need it. Here you can find options or advice, to help you make the best of the Rural Broadband that you have available. We are also about advocating on behalf of rural NZ for better connectivity and use insights you provide, to campaign for better rural internet access.*

On our site:

1. [Rural Broadband Options](#)
2. [Troubleshooting](#)
3. [Rural Broadband Forum](#)
4. [Working with Slow Broadband](#)

<https://ruralconnect.co.nz/wp/>

**See Appendix 1 for a copy of the presentation.**

#### Questions/Answers

- A wide variety of options for residents to look at.

*A break was taken for lunch with the meeting resuming at 1.10 pm*

#### 6. **FENZ in the Sounds – (Chris Hayles - Chief Rural Fire Officer)**

- Unable to attend.  
**Action point noted to invite him to the next meeting.**

#### 7. **Marlborough Roads Update - (Steve Murrin)**

- Steve Murrin spoke to the group around the latest unwelcome rainfall over the last weekend. Another slip had taken out the temporary road up the Awatere and the Waihopai. The slips have now been cleared.
- The continuing work on the roads will be done after Easter to give people access to their holiday destinations. Notices will be issued for dates for residents to be aware of.
- The Kenepuru water tank slip, Tumble Down bay and Okiwi Bay continues.

Where to find information –For the latest roading information visit:

[nzta.govt.nz/projects/marlborough-roads-recovery/](https://nzta.govt.nz/projects/marlborough-roads-recovery/)

Sign up to the [Antenno app](#) to receive notifications on your phone

Read the [programme of works and road access](#)

Check the [Civil Defence Emergency Management map](#) for road access restrictions

Phone: 0800 213 213 or 03 520 8024, between 8am - 5pm, Monday to Friday

Email: [recovery@marlboroughroads.com](mailto:recovery@marlboroughroads.com)

<https://www.marlborough.govt.nz/services/alerts?itemCategory=roads>

The [nzta.govt.nz/projects/marlborough-roads-recovery/](https://www.nzta.govt.nz/projects/marlborough-roads-recovery/) website gives details of roading projects, updates, road closures and photographs of work being done.

<https://www.nzta.govt.nz/>

### Questions/Answers

- Moetapu Bay Resident's Association would like more information in a timely manner. They are on the weekly recovery email however would like to know what the repairs will involve. Steve will look into this. Marlborough Roads is also liaising with the Marlborough Recovery Team so there are various agencies all working together.

#### Action Point noted.

- Pothole and vegetation complaints from various areas in the sounds. Steve is aware and his team will be working on the issue.
- Linda Booth thanked Steve for all work that occurred when they had a slip. The Duncan Bay/Penzance community was impressed with the speed of the repairs.

### 8. Brian FM and it's reach in the Sounds in times of emergencies – (Andrew Jefferies)

- Andrew Jefferies gave the group an outline of his radio station, BrianFM which is a privately owned radio station owned by Andrew and his wife. They now have radio stations in various locations around New Zealand (Brianfm.com). See below information from Andrew.
- If there are ways this group could assist us in the additional coverage or reliability of coverage that would be appreciated.
- Specifically, areas could be: -
  1. A small repeater location to send our FM signal to Bulwer more reliably (Saddle Hill)
  2. A broadcast location in the Outer Sounds (Rahotia)
  3. Assistance in moving our Picton frequency atop Mt Freeth (above Picton)
- As with each of our repeater locations – Brian FM specify and maintain the equipment as part of our community coverage and have secured many locations with the assistance of MDC & Marlborough Lines. Not sure if there are any Government / Council funding opportunities to assist with this coverage – if desired.
- I do notice Marlborough Lines have locations in both Saddle Hill and Rahotia, and I can approach them if this group are interested in backing our request to locate alongside their facilities. They have been cautious recently to expand their co-site partners, just due to logistics, but if the MDC and Sounds Advisory Group were interested in pursuing this potential coverage, we can certainly ask.
- See below for the radio bands to tune into BrianFM.



See Appendix 2 for the location maps that BrianFM covers.

## Questions/Answers

- Cllr Taylor thanked Andrew for all his contributions and assistance with Civil Defence.

## 6. Community Reps Update – SAG members

### D'Urville Island – Poneke Rene

- Apologies

### Kenepuru & Central Sounds Residents Association (KCSRA) - Ross Withell

- Road update.
- Enquiry into Portage. **Action point noted for an update**
- Rubbish skips. The 0800 number on the bins has disappeared so people don't know how to call if the coin skip is not working.
- Thank you to the barge services.

### Sustainable Land Transition Feasibility Study – Eric Jorgensen

- 2022/23 wilding pine programme on going
- Rodents – stoats, rats and mice. Feedback has been positive in Queen Charlotte Sound/Totaranui area.
- There are currently no vacant trustee positions on the Restoration Trust.
- The shellfish recovery project has been approved and funded.
- A joint project will commence between the Nelson-Tasman City Councils and Fisheries NZ to study major species complexities.
- The Integrated Management Project with Council and Nautical Science to raise awareness around some of the special places within the Sounds is ongoing.

### Moetapu Residents Association (Mahau Sound Outward Bound) – Vic Koller

- Roading is the biggest concern with more and more rain events.
- There is a new Residents committee
- Lessons have been learned from the storm event
- Rubbish and recycling bins have been misused by locals and holiday makers
- Irresponsible jet skiers are causing concerns
- Ungulate control is needed in the area. Deer are a real problem.

### Marine Farming Associations – Ned Wells

- There will be an issue with staff shortages over the marine farming area once Omicron enters the workplace.
- It was asked of Ned if there are mussel restoration projects in the Te Hoiere/Pelorus is in the final year. The only site that failed was in Grant's Bay due to star fish. Ned advised that there is a report he can share.

**Action point noted.**

### Queen Charlotte Residents Association – Monyeen Wedge

- Jet ski complaints from holiday makers/bach owners.
- Recycling station needed at the Picton terminal.
- Seawater contamination in Lochmara Bay, Council will investigate further.

- Pest control needed.

### Port Underwood Residents Association – Ken Roush

- Recycle bin needed to be emptied but the community had no response from the company until Council was called and then it was emptied. Perhaps communication could be improved.
- Jet skis have caused issues over the summer. Perhaps education needs to be done.  
*Clr Faulls advised that they can call the Harbourmaster at the time of issues.*  
Phone: Duty Harbourmaster [03 520 7400](tel:035207400)  
Email: [Harbours@marlborough.govt.nz](mailto:Harbours@marlborough.govt.nz)  
<https://www.marlborough.govt.nz/recreation/swimming-and-boating/jet-skis>  
[https://www.marlborough.govt.nz/repository/libraries/id:1w1mps0ir17q9sgxanf9/hierarchy/Documents/Environment/Harbours/Harbours%20General%20List/Harbour\\_Limits\\_Map.pdf](https://www.marlborough.govt.nz/repository/libraries/id:1w1mps0ir17q9sgxanf9/hierarchy/Documents/Environment/Harbours/Harbours%20General%20List/Harbour_Limits_Map.pdf)

#### See Appendix 3 for guidelines from the MDC website

- It was asked of the Council, what information was present on the climate change impacts and what are Council's intentions into the future?

See links below for the Council website on climate change.

- Emissions Report produced by Council can be given to members to read. **Action Point Noted**
- Climate change can be added to the next agenda. **Action point noted.**
- MDC will be recruiting a climate change advisor.

<https://www.marlborough.govt.nz/environment/climate/climate-change>

**National Environment Reporting Review** [Improving Aotearoa New Zealand's environmental reporting system - Ministry for the Environment - Citizen Space](#)

#### Climate Report – from MDC website

[https://www.marlborough.govt.nz/repository/libraries/id:1w1mps0ir17q9sgxanf9/hierarchy/Documents/Environment/Climate/Climate%20Impact%20Report/Climate\\_Impact\\_Report.pdf](https://www.marlborough.govt.nz/repository/libraries/id:1w1mps0ir17q9sgxanf9/hierarchy/Documents/Environment/Climate/Climate%20Impact%20Report/Climate_Impact_Report.pdf)

Marlborough District Council also produces a Climate Impact Report in conjunction with Ian Blair, of Climate and Land Matters, which can be downloaded below.

#### Contents

- The immediate past
- The immediate forecast
- NIWA outlook
- Rainfall and temperature
- Soil moisture
- Soil temperature
- Soil moisture at Marlborough Research Centre
- Climate Report

### Forestry Representative – Rick Osbourne

- Apologies

### French Pass Residents Representative – Rob Schuckard

- The heavy rain last weekend on top of roading issues is causing some residents anxiety.
- Rubbish issues with dumping of rubbish outside of the bins.
- Ongoing Pest control is needed as deer and goats are an issue.

### Duncan Bay Residents Association – Linda Booth

- Thank you to Steve Murrin and his team at Marlborough Roads for all the great work.
- Acknowledgement to Councillors and Civil Defence for communication pre the February rains. This was a help and enabled them to get information out to residents.
- Roadside weeds need cutting.
- Remote transfer stations around the Sounds  
This will be an action point for the next meeting. Alec McNeil will be invited to speak.
- What had happened with the ranger monitoring of freedom campers?

Steve Murrin advised the roading crew are completing some of this work due to road works and weather. There have been no great changes that Council have been advised of.

### Outer Pelorus - Emma Hopkinson-Young

- Johnsons Barge is doing a great service for the area. A truck and trailer would be good if possible due to the road closures.
- It was noted that the area is very appreciative of the travel subsidy so that friends and family can come into the area while the roads are being repaired. This has been good for the locals mental health to be able to see their families while the road

A reminder of the link for the subsidised travel –

For the water taxi travel subsidy details, contact i-Site for further clarification on 0800 777 181. The website has the departure times from Picton to Torea and Onahau Bay. The Havelock departures are for Raetihi, Nopera, St Omer, Te Mahia, Tara Bay, Puketea Bay, Portage, Waitaria and Fish Bay.

<https://marlboroughnz.com/kenepuruwatertaxi/>

### Central Pelorus (Hopewell) - Lynley Perkins

- Thank you for the transport subsidy. If this could carry on till Easter/ANZAC for guests to be able to come in as road is still owners only.  
Clr Taylor advised end of March however depending on roading etc this may go on for longer. **Action point** noted for Clr Taylor and Clr Faulls to request time extension from Council to extend time.
- Thanks to Steve Murrin and his staff for the work they have carried out.
- The skip bins being delivered by Johnson's Barge have been wonderful. Thank you.
- What do we do when Covid comes? The RATS are not available yet. Waitaria will do boosters at the end of the month. If unwell call the Healthline 0800 number or follow the emergency procedures.

### Okiwi Bay – Tim Greenhough

- On Zoom. Nothing further to report.

### DOC Update – Dave Hayes (DOC)

#### Recreation

- Queen Charlotte Track repaired but was damaged again in the latest rainfall.
- Slips on various tracks including around Endeavour Inlet which are being monitored.
- Pelorus catchment alarm has gone off twice in the last month due to rain fall levels.
- Working with companies to store spoil on the side of the road for repairs. Penzance is the latest area.
- Back Country Trust are working in the Sounds this week. The trust are volunteers who carry out hut upgrades around the country. Rocks Hut will be repaired this week
- Two toilets repaired at the Pelorus Bridge area.



## Biodiversity

- Takapourewa/Stephens Island – light utility vehicle and building materials to be taken out by barge and chopper to carry out work on the island.
- There are new staff on Te Pakeka/Maud Island who have come from Mana Island. 97 members of the public took advantage of a guided tour of the island with DOC staff during the open days.
- Blumine Island – The Orange Fronted Parakeet's Project is ongoing.
- Greville Harbour/Wharariki on Rangitoto ki te Tonga/D'Urville Island – funded from MPI to cover the work programme for next 4.5 years. The next 4.5 years will be restoring the lake values. The trainees Rangers' course from NMIT and an iwi based training will be used to help with this work.
- Ongoing wasp projects.
- Covid – anyone coming onto a DOC site or staying at a DOC site must be vaccinated and be able to prove it. Feedback has been that most people are compliant with this mandate.
- Review of Stewardship land that has not been given reserve status is ongoing.
- DOC reviewing ways to reducing its carbon footprint.
- Monyeen asked if DOC have a wetlands plantings list. Alan Johnson advised that MDC has one on website. See links below.

See the website for the Planting and Restoration Guide. This contains the following documents:

[Introduction/Planting and Restoration Purpose \(PDF, 626KB\)](#)

[Planning your Planting and Restoration Programme \(PDF, 551.8KB\)](#)

[How to Plant - Ensuring Plant Survival \(PDF, 352.6KB\)](#)

[The Plant Lists - Using the Guide \(PDF, 723.5KB\)](#)

[Pest Control - Animals and Plants \(PDF, 699KB\)](#)

[Appendices \(PDF, 207.2KB\)](#)

<https://www.marlborough.govt.nz/environment/biodiversity/biodiversity-publications-and-reports/north-marlborough-planting-and-restoration-guide>

## Community

- Staff news - Willy Able retired at end of last month and Maurice Brown from the Havelock office is retiring at the end of February after many years of great service.

## 9. Destination Management and the future of tourism in Marlborough – (Anton Wilkes)

- Notes from Anton - Key points -
  - I. The Marlborough Destination Management Plan (DMP) is now at an initial draft stage, and Destination Marlborough are seeking ongoing input and comment from the wider community.
  - II. The Marlborough Sounds are a key visitor asset and the DMP reflects this and is undertaking to address opportunities around new product developments in the Sounds with Picton and Havelock as gateways.
  - III. Initiatives include conversations with DOC and iwi to ensure land management processes are included and respected.
  - IV. The DMP process has been challenged in the ability to meet collectively with the community in the Sounds due to access, Covid, and weather events over the past year.
  - V. A key potential project that has emerged is the consideration of a wider Sounds Opportunity Project using the recent Milford Sounds model as an example.
  - VI. Affordable access and limited visitor time remain a key issue for visitation to the outer Sounds, and so ideas around water-based community transport and shorter time visitor experiences are being considered.

- VII. The development of visitor attractions and infrastructure in Havelock and Picton will also boost these towns as overnight options to grow accessibility to the Sounds.
- VIII. As a regionally based strategy, the four valley geo space idea is being promoted as an option – ensuring a closer connection between visitors and the locals, better environmental impact awareness and the ability to develop higher value, lower volume regenerative, authentic experiences.
- IX. Destination Marlborough will be seeking to formalise connectivity with locally based community tourism groups to ensure the communications are a recognised and ongoing element during the plan's implementation over the next 10 years.
- X. Opportunities abound in the Sounds with the ability to grow better visitor experiences around seafood, flora and fauna, and heritage and culture and natural environs – these 4 elements form part of 6 major core destinational elements – which also include aviation, and the Sounds themselves.
- XI. The DMP will also develop strategies that include cruise ships, the seafood/wine connection and the resilience of the Queen Charlotte Track.

Destination Marlborough looks forward to hearing further feedback in writing from participants in Monday's meeting to ensure the outcomes of the plan are aligned with community aspirations.

**Due to the size of the presentation, a pdf version has been attached to the minutes as separate document.**

## 7. General Discussion (other Items)

- Clr Taylor - A third Councillor for the Ward area has been appealed and a hearing panel will be held on 3 March.

Meeting dates for 2022

- 16 May 2022
- 8 August 2022
- 14 November 2022

### Next Meeting: 16 May 2022 - MDC

The meeting finished at 3.10pm

| Action   | Person Responsible      |
|--|-------------------------|
| 1. What causes the red tide toxin? Invite Cawthron to the next meeting   | Alan Johnson            |
| 2. Request Jodi from MPI and Gina Fergusson MDC Compliance Manager to speak on the collaboration of the standards. | Alan Johnson            |
| 3. To follow up the guidelines that are currently being reviewed by government.                                    | Gina Ferguson           |
| 4. Link the Nakuta Bay & Waikawa Residents Association with Eric Jorgensen on ungulate control.                    | Clr Faulls/Clr Taylor   |
| 5. Add thoughts to the TOR in an email to the group.   | Rob Shuckardd           |
| 6. Add the Waiteria Hall 2018 TOR comments to the minutes  | Bernadette              |
| 7. Invite FENZ in the Sounds – (Chris Hayles - Chief Rural Fire Officer).  | Clr Faulls              |
| 8. Remote transfer stations across the whole Sounds. Invite Alec McNeil.   | Alan Johnson            |
| 9. Request Council to continue the transport subsidy till after Easter/ANZAC holidays.                             | Clr Faulls & Clr Taylor |
| 10. Omissions Report for members to read.  | Alan Johnson            |
| 11. Add Climate Change to next Agenda.   | Bernadette              |
| 12. Portage update.  | Clr Faulls              |

---

| Action   | Person Responsible |
|--|--------------------|
| 13. Moetapu Bay Resident's Association would like updated information on what the future road repairs involve. | Steve Murrin       |
| 14. Provide the mussel restoration projects report to the group.   | Ned Wells          |

---

### Sounds Advisory Group Meeting 14/02/22

1. Cell sites/RBI2
2. Alternative Technologies
3. Weather / emergency impacts...
4. Sounds Demi-graphics
5. Telephone Service
6. Summary

### Cell sites / RBI2

Marlborough Sounds Ward area has approx. 20 cell towers

- 12 in the Queen Charlotte & Kenepuru
- 1 each in Havelock, Canvastown, Pelorus Bridge and Rai Valley (4)
- 4 in Pelorus Sound (2 in Okiwi Bay, 1 Mt Kauraroa, 1 Port Ligar) (4)

7 of the 20 are more newly installed by RCG/the government's RBI2 initiative and are mostly 4G only, meaning some phones will not work on them for voice calling services. The providers are still selling phones that do not use this technology.

At least 2 of these RCG sites already had service (3G).

The remaining sites (13) show signs of being congested, meaning no consistent usable internet access. Mobile phone calls generally work. The internet may not work reliably, if it is indeed available as most sites are on a "stop sell" by the providers.

The cost of rural broadband remains a surprise to many – over \$200-\$300 a month. Source: <https://ruralconnect.co.nz/the-fixed-wireless-pricing-jungle/>

Cell Phone Coverage (4G)—Marlborough Sounds Ward

NOTE: this does not = Internet coverage for Rural Fixed Wireless Plans as cell towers across the area are at capacity for this service <https://theobaherald.com/news/rural-new-zealanders-share-frustrating-experiences-of-slow-internet/>. In addition, there are mobile to device tethering limitations set by providers (in other words, you cannot connect more than one computer in a household to one mobile phone)

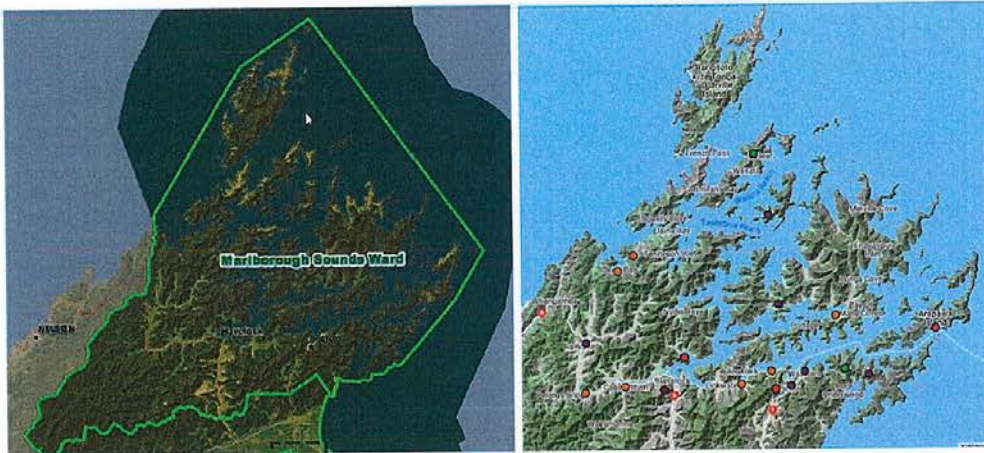


Source: Marlborough District Council, Representation Review for 2022, Consultation Document [https://www.marborough.govt.nz/repository/libraries/id:1w1mns0lr17g5yxan9/hierarchy/Documents/Your%20Council/Elections/GD2021-82\\_Representation\\_Review\\_for\\_2022.pdf](https://www.marborough.govt.nz/repository/libraries/id:1w1mns0lr17g5yxan9/hierarchy/Documents/Your%20Council/Elections/GD2021-82_Representation_Review_for_2022.pdf)

Source: Vodafone, an Rural Broadband 2 (RB2) provider, through the joint venture of Spark, Vodafone and Two Degrees <https://www.vodafone.co.nz/network/coverage/>

Cell sites—Marlborough Sounds Ward, in comparison to ward boundaries

NOTE: this does not = Internet coverage for Rural Fixed Wireless....



Source: Marlborough District Council, Representation Review for 2022, Consultation Document [https://www.marborough.govt.nz/repository/libraries/id:1w1mns0lr17g5yxan9/hierarchy/Documents/Your%20Council/Elections/GD2021-82\\_Representation\\_Review\\_for\\_2022.pdf](https://www.marborough.govt.nz/repository/libraries/id:1w1mns0lr17g5yxan9/hierarchy/Documents/Your%20Council/Elections/GD2021-82_Representation_Review_for_2022.pdf)

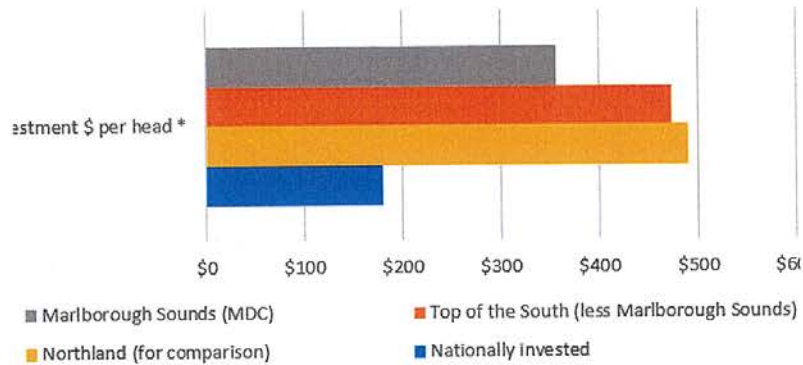
Source: [www.gls.geek.nz](http://www.gls.geek.nz)

Cell towers all providers— Orange: The RCG/RB2, Green & Red: Vodafone & 2Degrees, Purple: Spark

Depending on what technology your phone, device, technology access or provider has, actual phone coverage is a lot less.

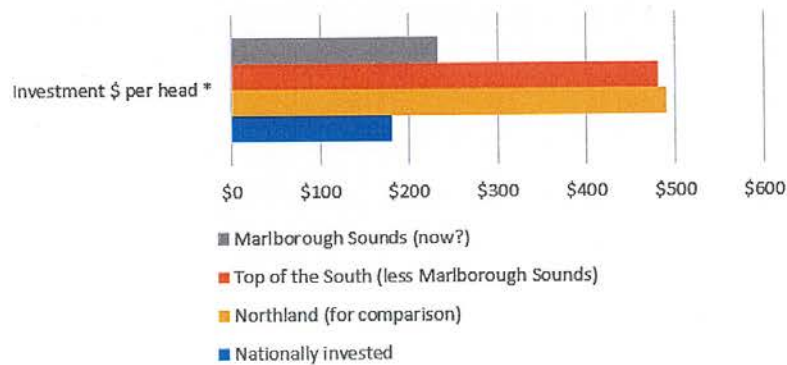
In terms of the overall country-wide RBI2 1.83 billion has been invested since Jan 2019 to Sep 2021. There is some extension to end 2023, most being to end 2022. Top of the South is at 40% of targets with \$70.8m invested. Marlborough Sounds ward area has an estimated \$1.4M invested so far.

### RBI2 Comparative Investment @ 30 Sep 2021 *Population Sounds @ 2018*



\* All technologies, mostly cellular and less cost if a WISP involved

### RBI2 Comparative Investment @ 30 Sep 2021 *Another view of pop. now v 2018*



\* All technologies, mostly cellular and less cost if a WISP involved

Technology access is not in keeping with population growth nor needs.

#### Introducing weather / emergency impacts....

Cell sites need power and 5 went down in the Marlborough July 2021 floods. 1 x RCG site in Canvastown required a degree of rebuild as it was sited where it regularly floods and was under-water.

#### Alternative Technologies

There are many throughout the Sounds –

- The most affordable and usable reported as being WISPs (SoundsNet, Pacific.net, ClovaNet, etc)
- Satellite comes 2<sup>nd</sup> on usable, but less affordable to some:
  - Geo stationary (Farmside & Gravity) or
  - Low Earth Orbit (Starlink)

Starlink is a new provider with unlimited highspeed internet. It is faster and more cost effective than geo stationary. It is rated as the fastest overall provider in NZ, on average by independent overseas studies. In Tennyson Inlet out of approx. 80 households that have any connectivity, we have 5 x known Starlink users. All of them very happy. In the spirit of Sounds ingenuity, old Farmside dishes are being used as solar BBQs.

Users of the Farmside network report very poor performance, especially against the cost. Farmside was sold to Vodafone and operates as a subsidiary to sell rural wireless and geo stationery satellite services to rural NZ'ers. It's become the fall guy for Vodafone's rural internet problems.

IOT – this is little known technology that enables infrastructure monitoring and management in rural areas, and across the Sounds. Rainfall, pest control projects and water supply monitoring are possible if you have usable and reliable internet services nearby. For example, Penzance Bay monitors water supply tank levels through this technology. It is now using Starlink but to start with it took some expertise and 8 hours to reprogram and get it working on the broken Chorus network.

#### Sounds Demi-graphics

1. Many are 2<sup>nd</sup> property owners and sensitive to ongoing costs for partially occupied properties
2. The next group are retired people, also sensitive to ongoing costs and struggling with technology
3. Then there is industry – farmers (marine, agriculture, home businesses and tourism) – generally less sensitive to costs but struggling with technology
4. Of the greatest concern is family businesses or family farming arrangements, where young children need transport and education, whilst parents work. They have no time, less funds and few options available to them for connectivity.

### Telephone Service

This is the greatest risk, and to all people in Marlborough. I'll unpick the demise of traditional landlines.

The 111 contact code –Commerce Commission initiative to ensure that vulnerable consumers have reasonable access to an appropriate means of contacting 111 emergency service in the event of a power failure. All that means is that providers have to tell you if your phone needs a power supply in an emergency.

The Emergency Calling Code – by the Telecommunications Forum (TCF), the industry body representing the providers who the government pays to deliver internet. Not enforceable by the government. It specifies the call quality standards for voice calls to emergency services.

The PSTN withdrawal – this is planned withdrawal of traditional landline services, regardless of what other technology exists. Any provider can refuse to offer traditional landline services (except Spark, but they try). Most providers do not offer this at all, as they must pay Spark (inherited by the old Telecom) extra \$ to provide the service. The basic cost for a traditional landline (only) is \$53 + GST. If you are setting up a new service or moving providers you must know to ask for it, even then you may not get it. And it will cost you about \$100 to \$150 all up (meaning with broadband as well).

Copper Withdrawal – an industry code around discontinuing copper-based services, but only where fibre exists.

The little-known thing is the TSO – Telecommunication Service Obligations. It was established under the Telecoms Act 2001 and amended in 2018 to exclude areas with fibre only (i.e. not the Sounds). It enables for specific telecommunications services to be available and affordable (i.e. \$53 + GST per month for a basic phone service). This regulatory framework belonged to the old Telecom and is inherited by Spark and Chorus only, no other provider.

### Summary

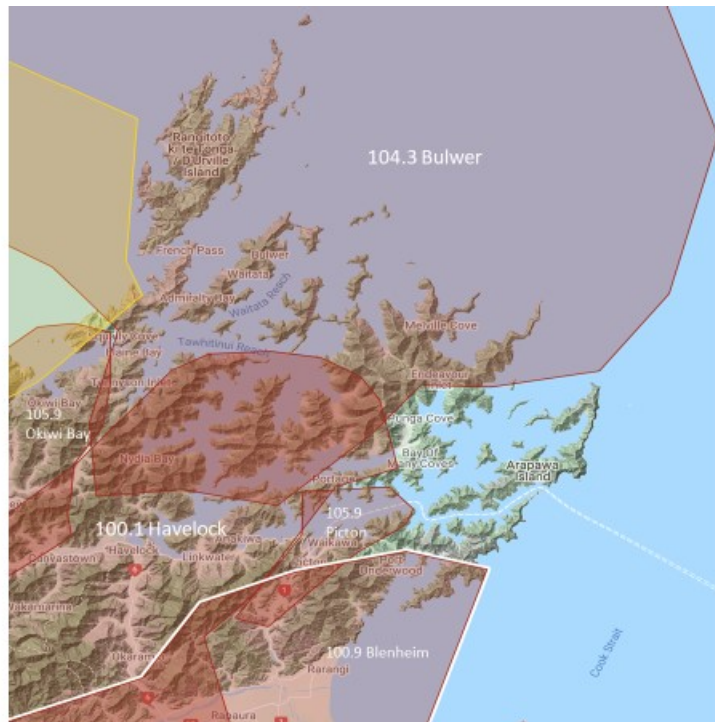
Reaching usable and affordable technology is a complex issue, and a deteriorating situation for Sounds property owners from many walks of life. As a community our options are to agitate to seek attention. It is a case of picking the priorities and the biggest issue facing us all today is about losing the ability to phone anyone, let alone emergency services.

I would like mention and thank Catherine Coates, Group Welfare Manager of Marlborough Emergency Management and the local members of FENZ. Through them Rural Connect have been able to have a conversation with the ComCen AF8 planning group about connectivity in emergencies and, most importantly, the degraded phone service we are starting to see the effects of.

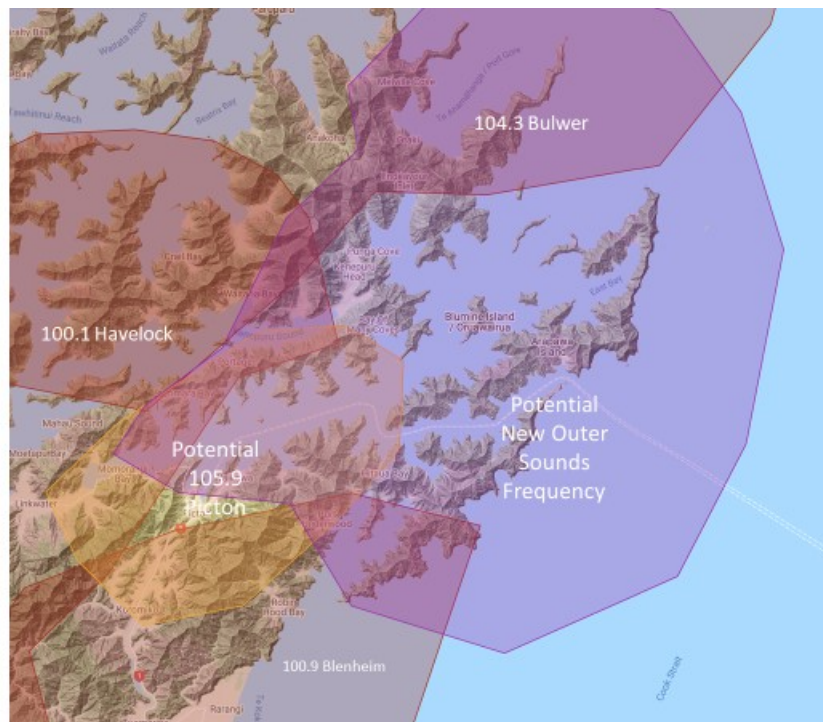


## Appendix 2 – BrianFM

### 1) Current coverage



### 2) Potential coverage with a Picton location change and adding an Outer Sounds frequency.



### **Appendix 3 – Jet Ski's**

From the MDC webpage

<https://www.marlborough.govt.nz/recreation/swimming-and-boating/jet-skis>

**Please note: All recreational boaties MUST carry life jackets in Marlborough waters.**

**Anyone in charge of a recreational vessel should expect to be prosecuted and fined \$200 if they're found without the life jackets required for those on board. See the link below for more information on requirements to carry life jackets.**

#### **[See life jacket information](#)**

A jet ski - also called a personal watercraft (PWC) - is best described as a power-driven vessel that:

- Has a fully enclosed hull; and
- Does not take on water if capsized; and
- Is designated to be operated by a person standing, sitting astride or kneeling on it, but not seated within it.

In terms of the Maritime Transport Act a PWC falls within the definition of a ship and is required to observe all relevant rules and regulations applying to any ship. Several people have been prosecuted in New Zealand after accidents involving personal watercraft. Since 1995, seven people have been killed in accidents involving jet skis. On two occasions the operators of the personal watercraft involved were charged with manslaughter, convicted and imprisoned.

Personal watercraft are, like every other pleasure vessel, required to observe a speed limit of five knots when:

- Within 200 m of the shore or any structure
- Within 50 m of another vessel, raft or person in the water
- Within 200 m of any vessel or raft flying the International Code Flag "A" (diver's flag)

Marlborough District Council frequently receives complaints regarding these craft, especially relating to their noise and close inshore operation. Operators are requested to bear the noise factor and other water users in mind and, where possible, enjoy this leisure activity in more isolated areas