



Marlborough Sounds Future Access

Community Workshop: February 2023



Agenda

- Welcome and Overview
- Strategic Case Context
- Access Issues
- Problem Evidence Summary
- Issue identification break out
- Possible solutions break out
- Next Steps
- Close



Introductions and Overview

- Introductions
- Project overview
 - Governance Advisory Group
 - Scope
 - Key milestones
 - Business case process
 - Workshop purpose



Project Governance Advisory Group

- Marlborough District Council
- Marlborough Roads
- Mana whenua and tangata whenua representative(s)
- Te Kotahi o Te Te Tauihu Charitable Trust
- Port Marlborough
- Waka Kotahi NZ Transport Agency
- Department of Internal Affairs
- National Emergency Management Agency
- Department of Conservation
- Regional Public Service Lead - Te Tau Ihu

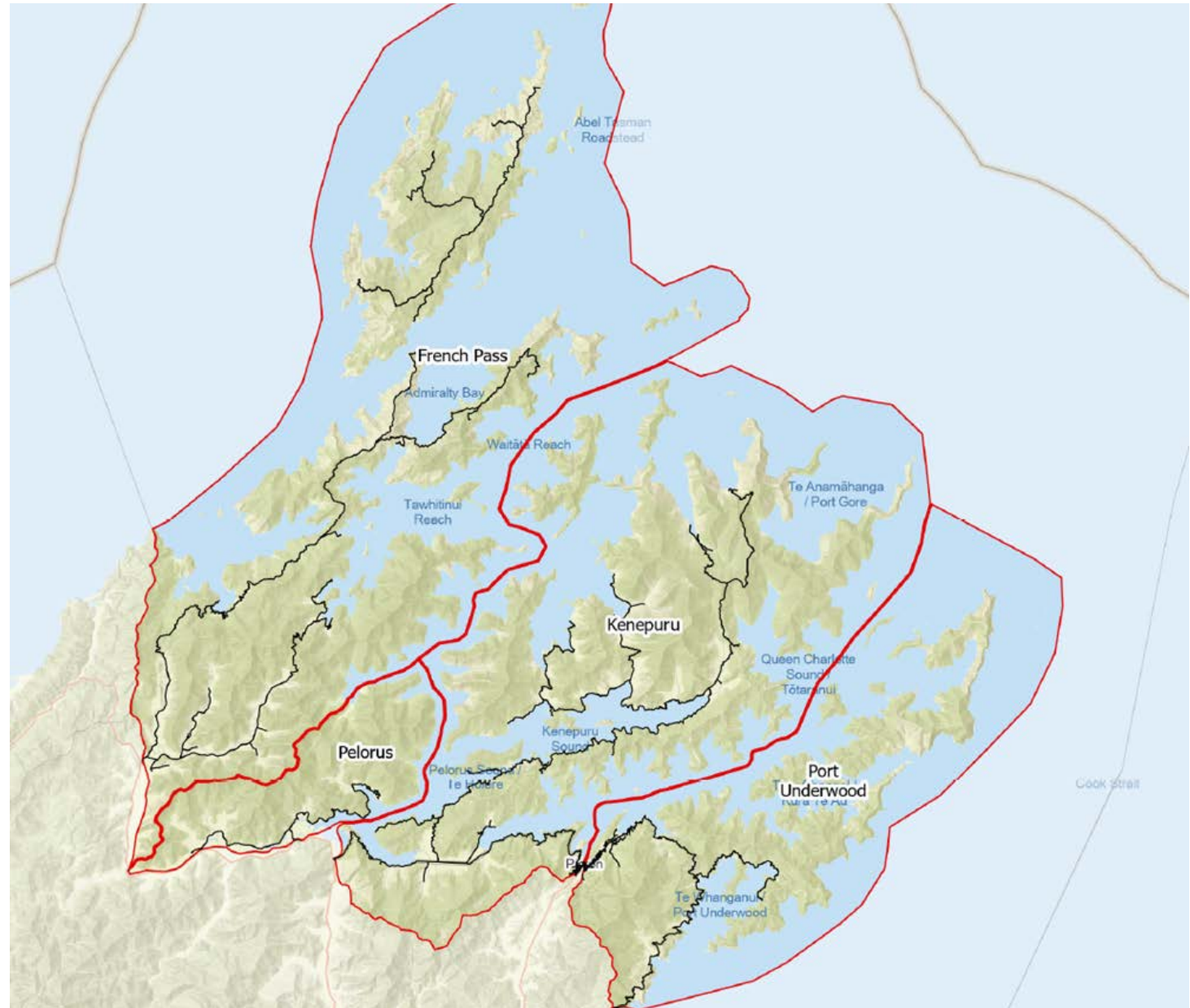


Kenepuru



Study Scope

- French Pass
- Pelorus
- Kenepuru
- Port Underwood



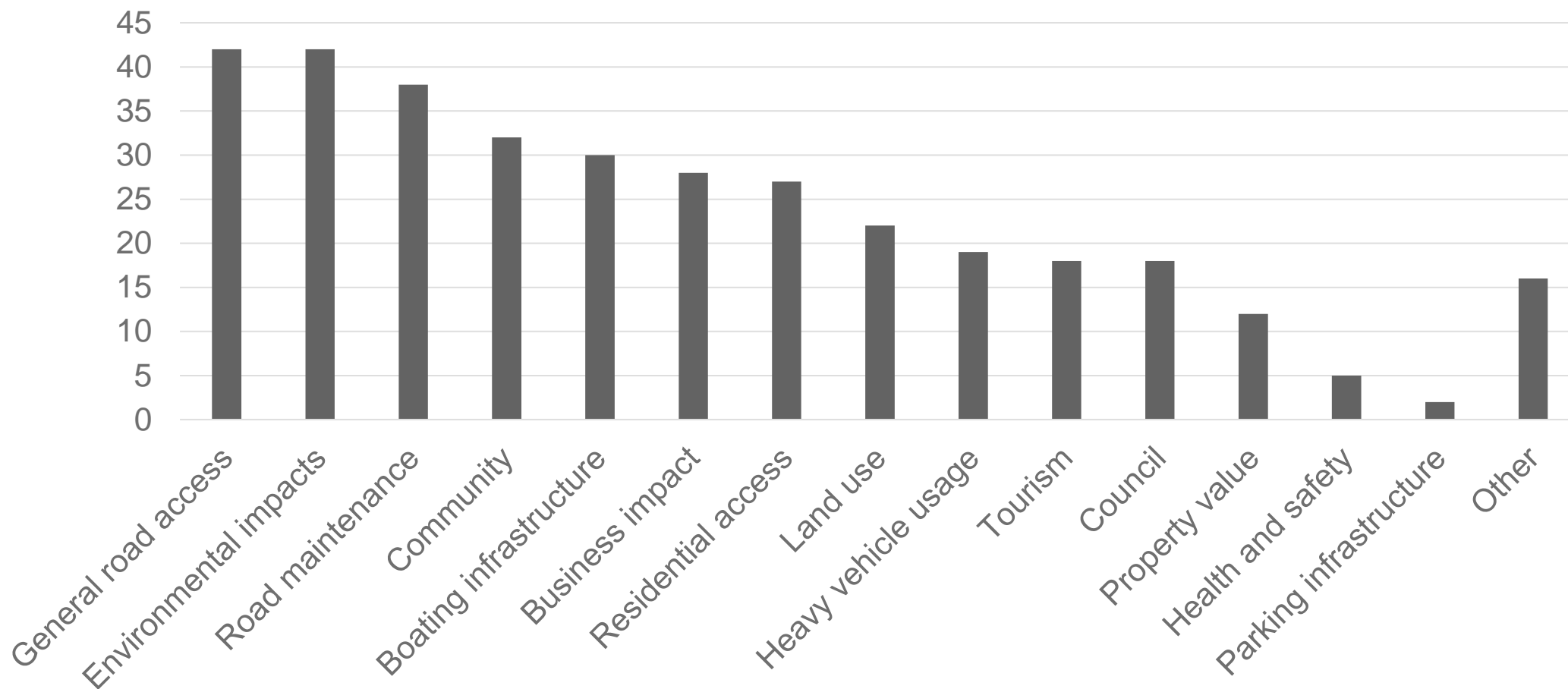


Key Milestones

Milestone	Target Date
Consult with community	January 2023
Investigate options	February 2023
Consult with funders	March/ April 2023
Consult with community	May 2023
Identify preferred option and next steps	June 2023
Further analysis and Special Consultation Process may be required	TBC
Funding decision	TBC
Inform community of funding decision	TBC
Implementation	TBC



Scope Survey Themes



Stakeholder Workshop Summary

Held Tuesday 24 January 2023

Covered:

- Scope
- Business Case Process
 - Discussion around the ILM
- Evidence so far
- Issues identification
- Possible solutions



Anakiwa Road

Business Case Process

- What is the problem?
- Why do we need to solve it? Why now?
- What are the options to solve the problem?
- Evaluate and decide what is the preferred option
- Plan the next steps including:
 - Who will fund it?
 - When will it be delivered?
 - How will it be delivered?



Upcoming Survey

- Launched 31 January 2023
- Will inform the business case and final project
- Residents and business survey
- Link: on Council website

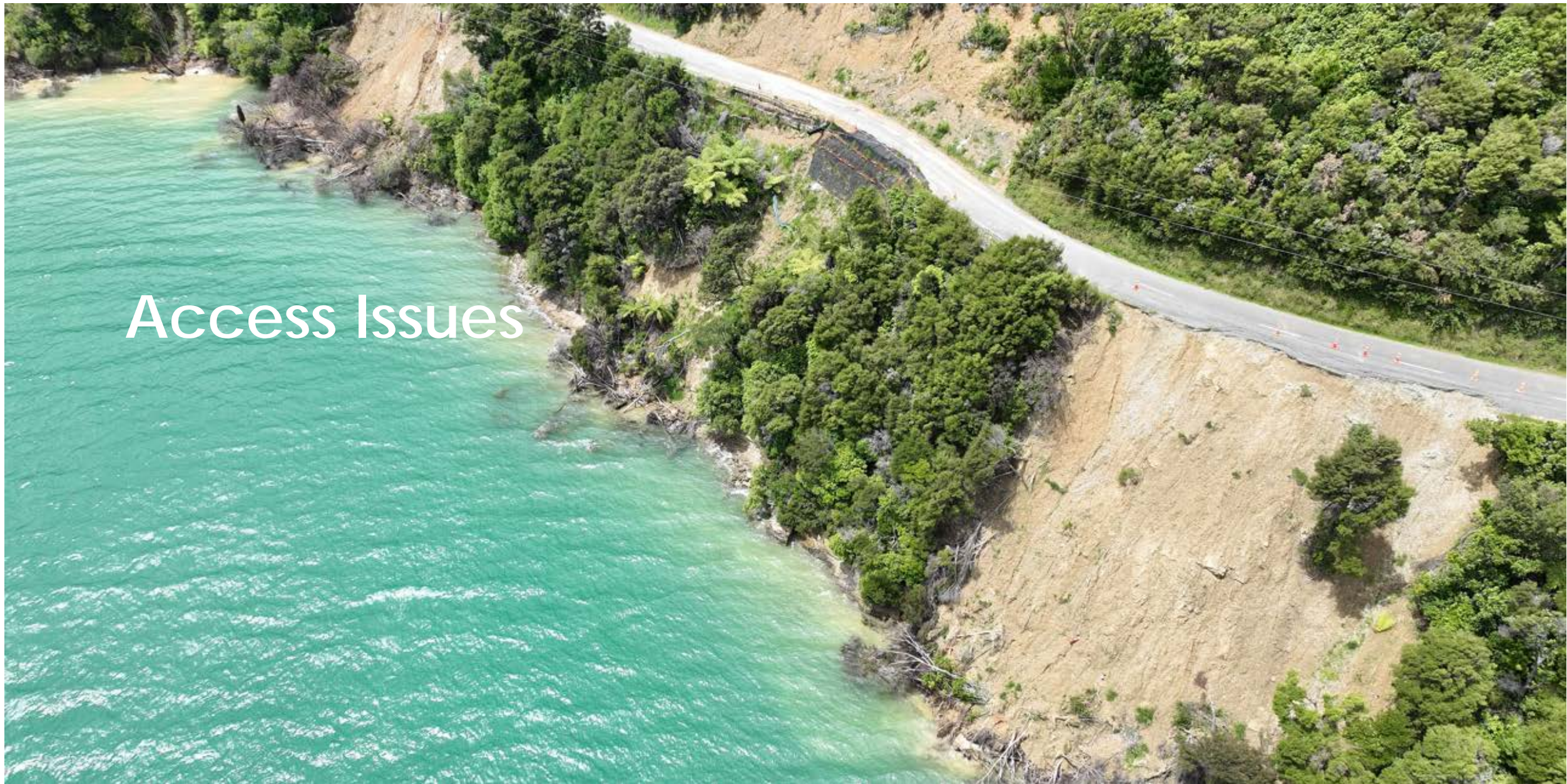
Please participate!

Marlborough Sounds Future Access Survey





Access Issues



Business Case Purpose

Provide access for the wellbeing of Marlborough Sounds communities
with a safe and resilient transport system



Elie Bay Road



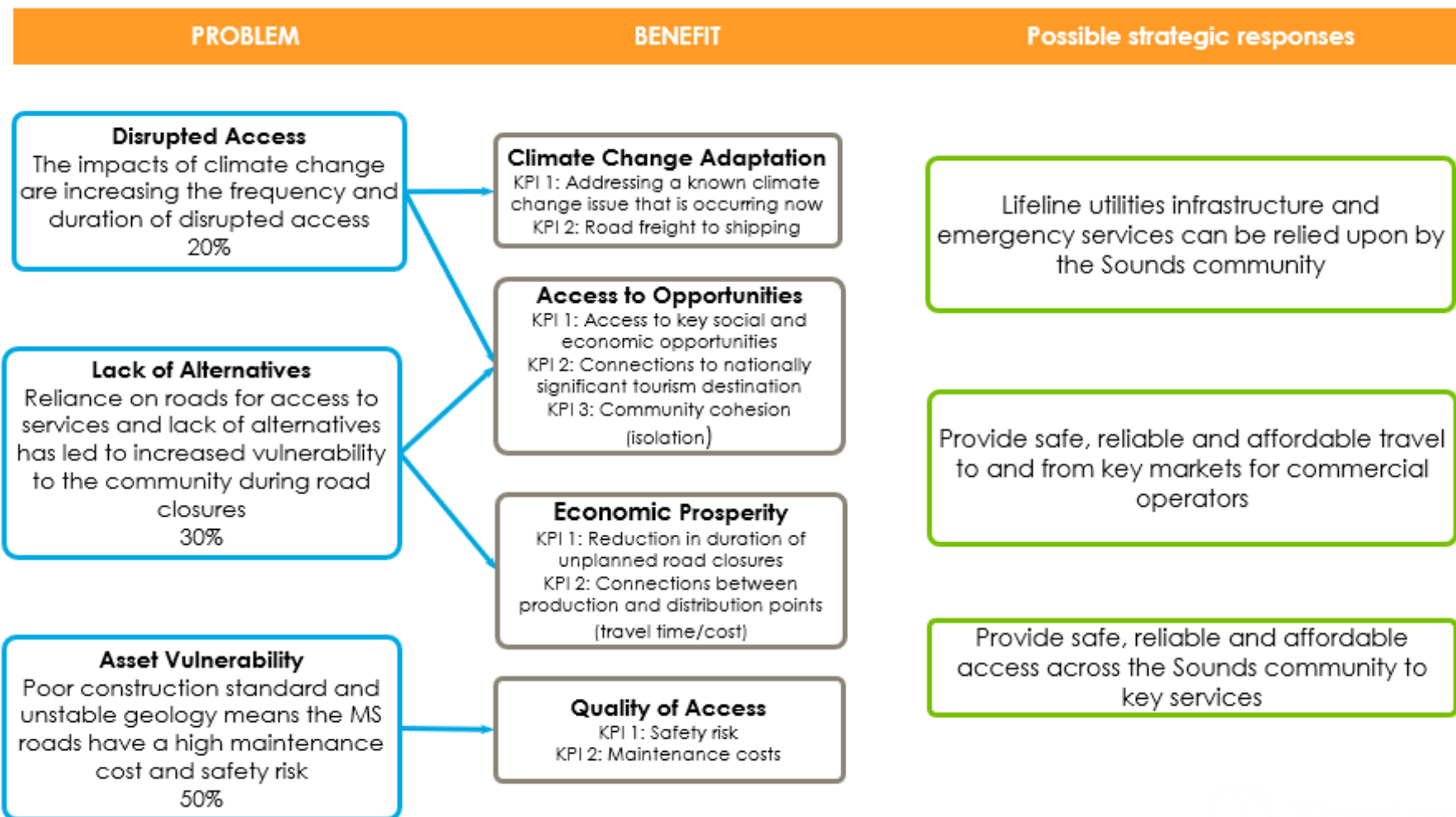
Problem theme, cause and consequence

- Climate Change – frequency of storm events
- Unstable soils and underlying geology
- Poor road construction standard (especially heavy traffic)
- Water access not set up (road reliance)
- Small number of properties (high cost to maintain road)
- Varying LoS expectations across community / sectors on access
- Deteriorating road condition
- High cost to fix road
- Ratepayers base small compared to cost
- National risk to power and fibre optic cables
- Environmental / prevailing and changing conditions (Geology and climate change)
- Road standard and level of service
- Alternative access modes
- Lifelines utilities vulnerability
- Economic and social impacts



Marlborough Sounds Future Access Final Investment Logic Map

Outcome Statement: Provide access for the wellbeing of Marlborough Sounds Communities, through a safe and resilient transport system

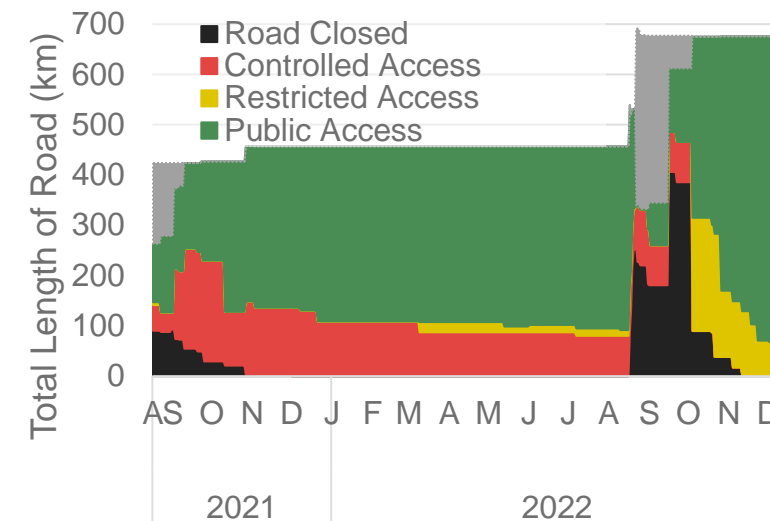
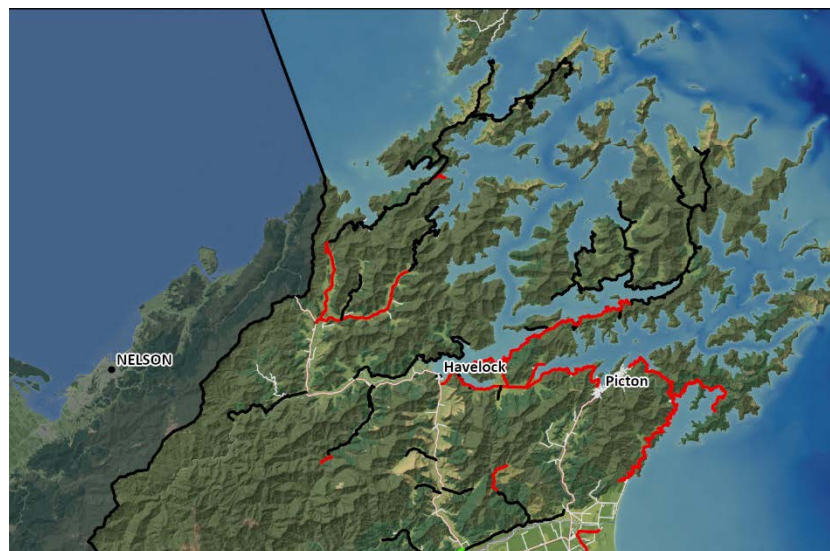
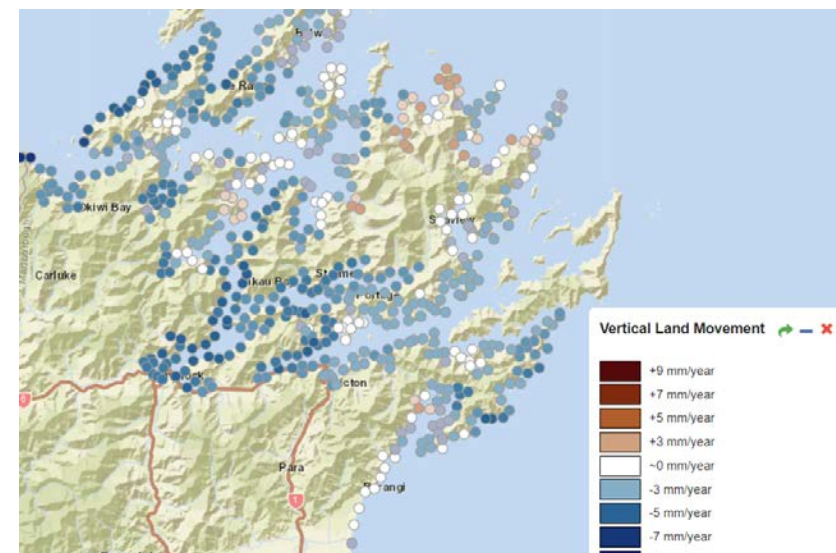
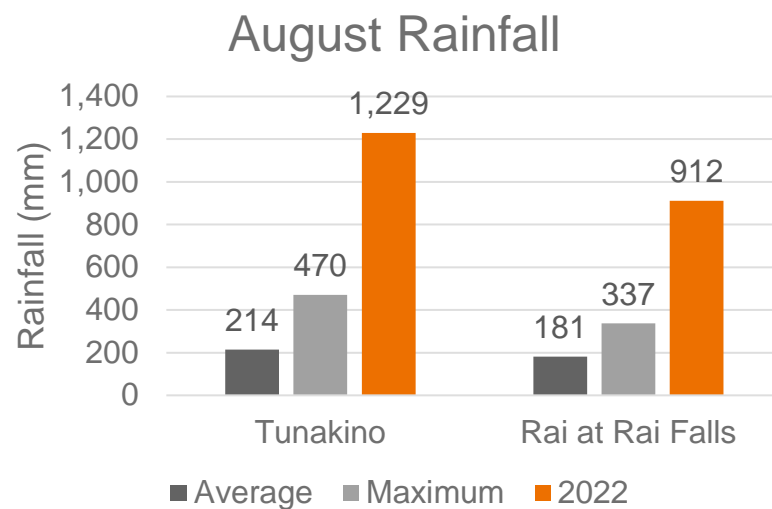


An aerial photograph showing a coastal road. The road is paved and curves along a steep, eroded hillside. The hillside is covered in dense green vegetation, but a large section of the road is blocked by a landslide of brown earth and debris. The water in the foreground is a vibrant turquoise color. The text 'Strategic Case Overview: Problems' is overlaid in white on the left side of the image.

Strategic Case Overview: Problems

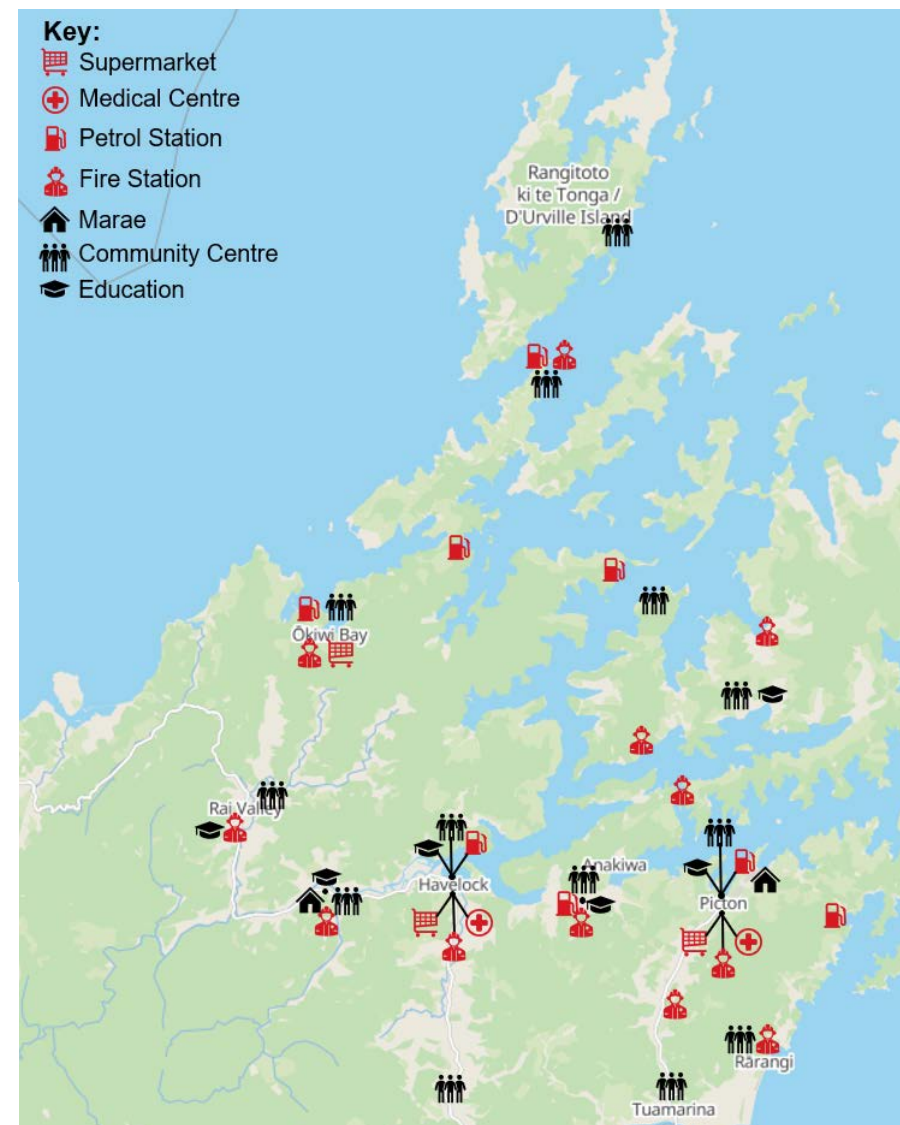
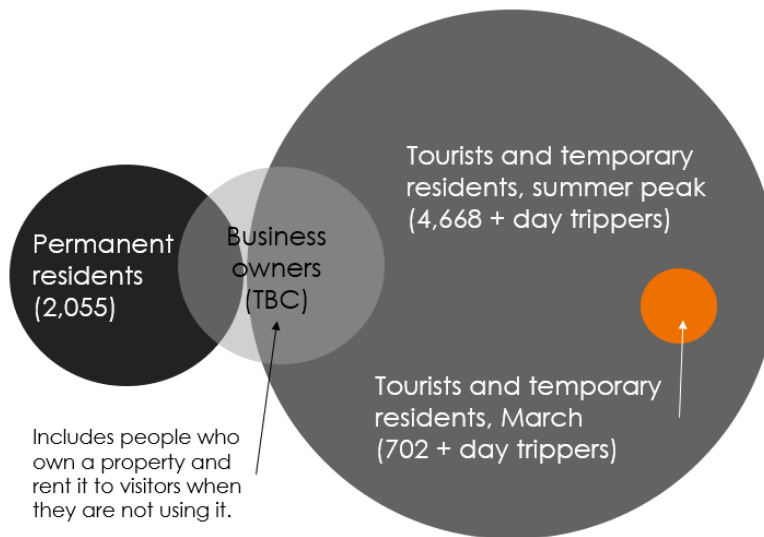
Problem 1: Disrupted Access

The impacts of climate change are increasing the frequency and duration of disrupted access



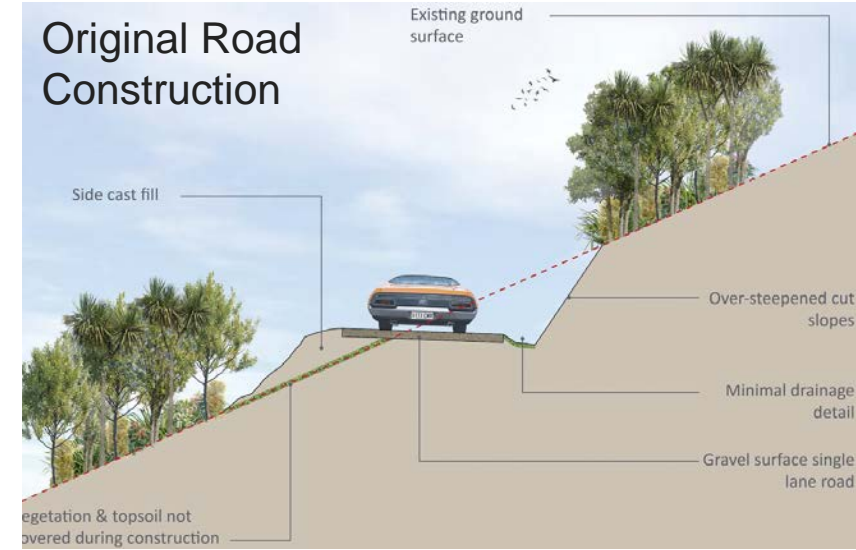
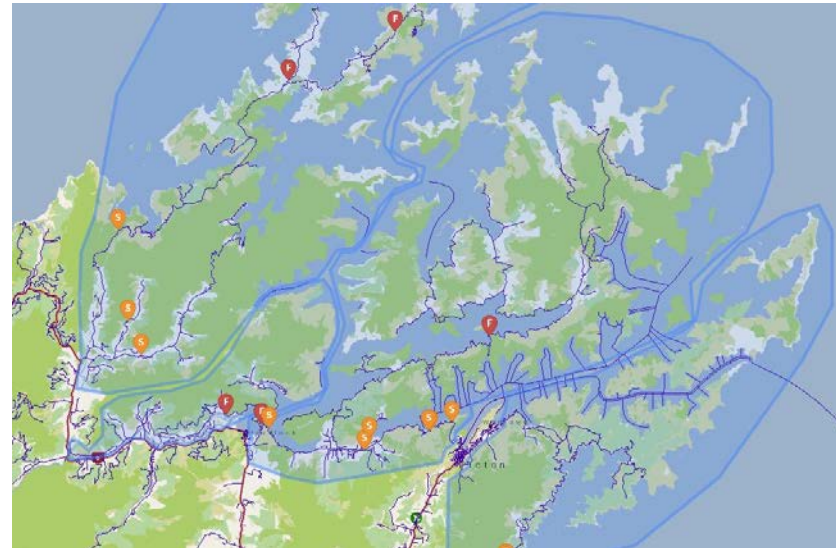
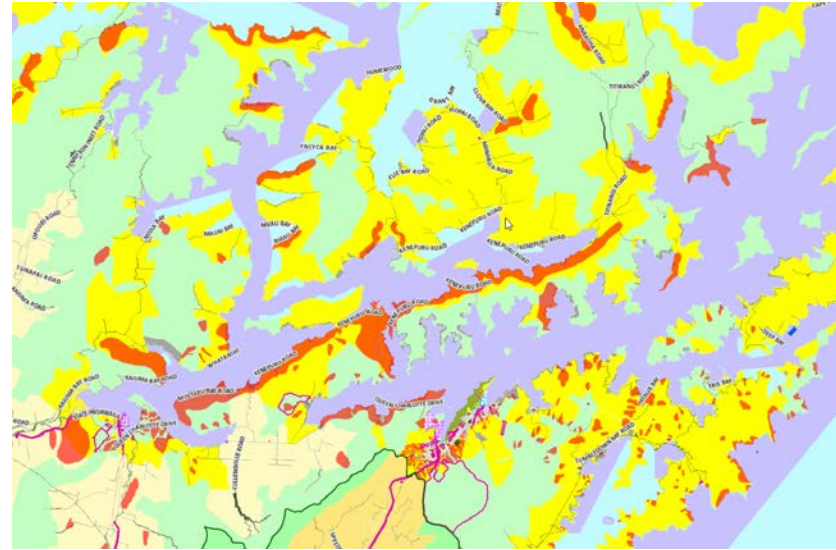
Problem 2: No Alternate Routes

Reliance on roads for access to services and lack of alternatives has led to increased vulnerability to the community during road closures.



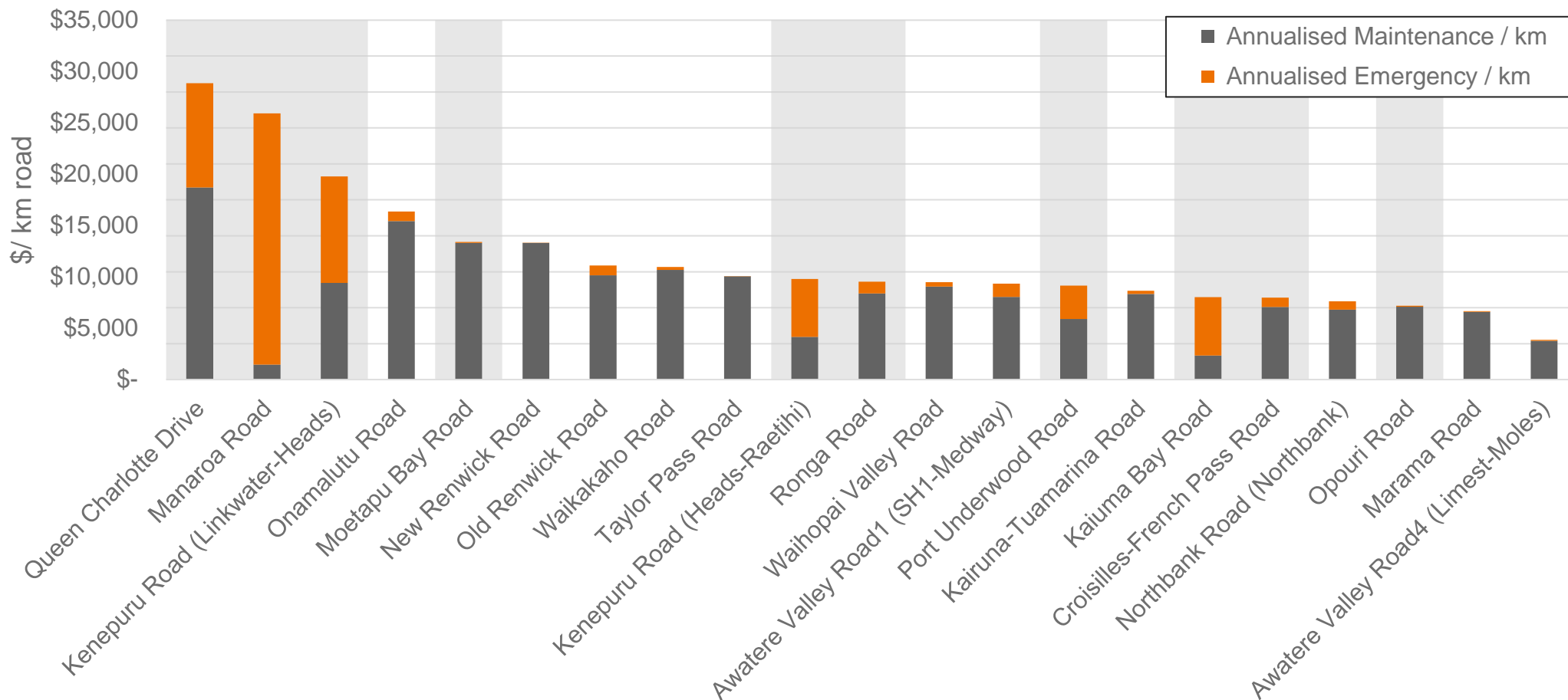
Problem 3: Asset Vulnerability

Poor construction standard and unstable geology means the Marlborough Sounds roads have a high maintenance cost and safety risk



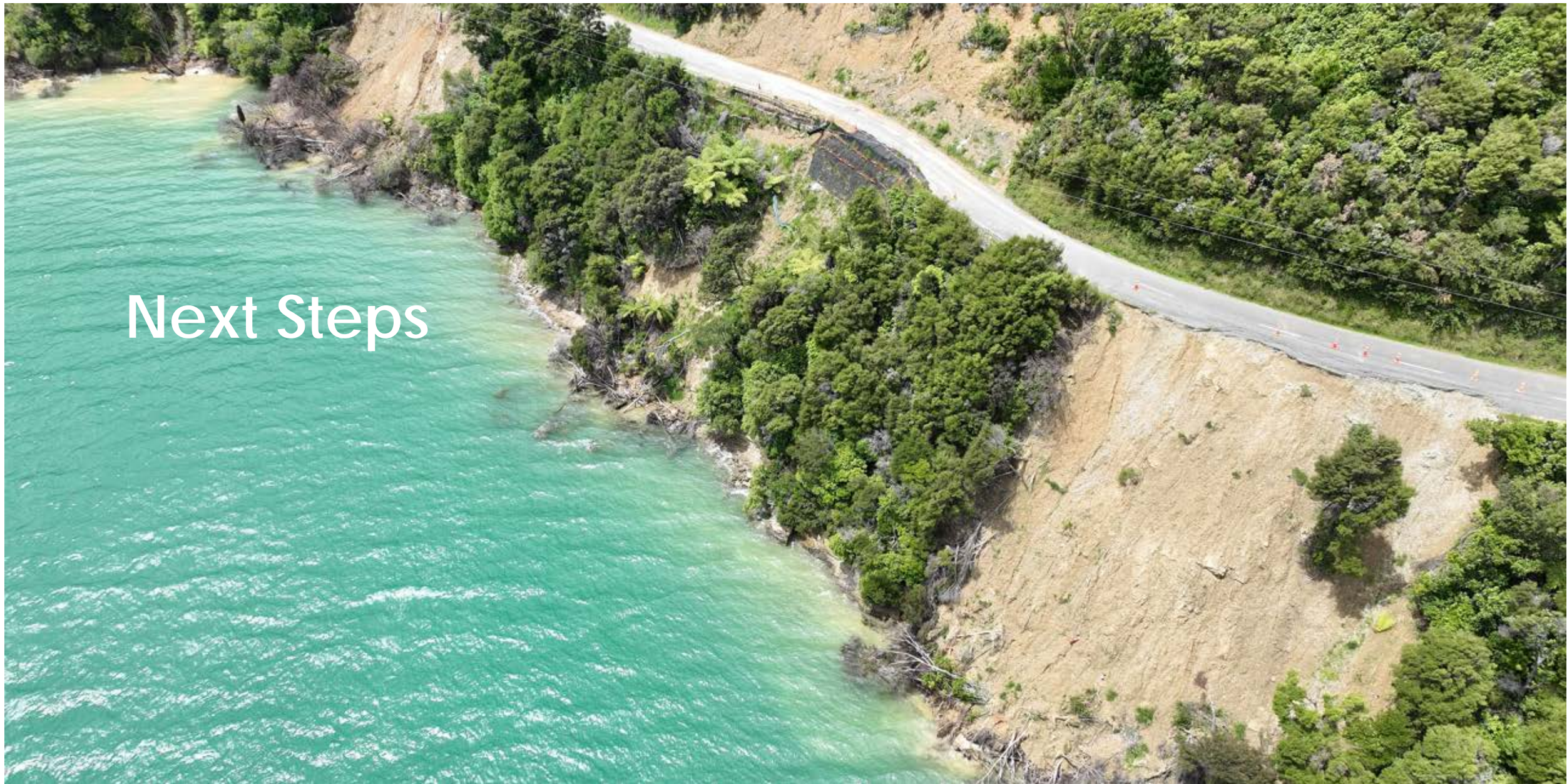


P3: Increased spending





Next Steps





Next Steps

Milestone	Target Date
Consult with community	January 2023
Investigate options	February 2023
Consult with funders	March/ April 2023
Consult with community	May 2023
Identify preferred option and next steps	June 2023
Further analysis and Special Consultation Process may be required	TBC
Funding decision	TBC
Inform community of funding decision	TBC
Implementation	TBC

At this meeting...

- Consider the Issues and Solutions suggested by Stakeholder Workshop (*on the walls*)
- Make comments/further suggestions using “stickers”
- Talk to:
 - Council
 - Waka Kotahi (Marlborough Roads)
 - Stantec representatives



After this meeting...

- Fill in the survey
- Follow progress:
 - Online
 - By mailed updates
 - Future meetings/consultation
- Talk to Council



Croisilles-French Pass Road

How you can be involved

- Survey: Launched 31 January 2023
- Feedback forms
- Future community engagement sessions (May)
- Project website:
<https://www.marlborough.govt.nz/services/roads-and-transport/marlborough-sounds-future-access-study>
- Project email:
soundsfutureaccess@marlborough.govt.nz





Provide access for
the wellbeing of
Marlborough Sounds
communities