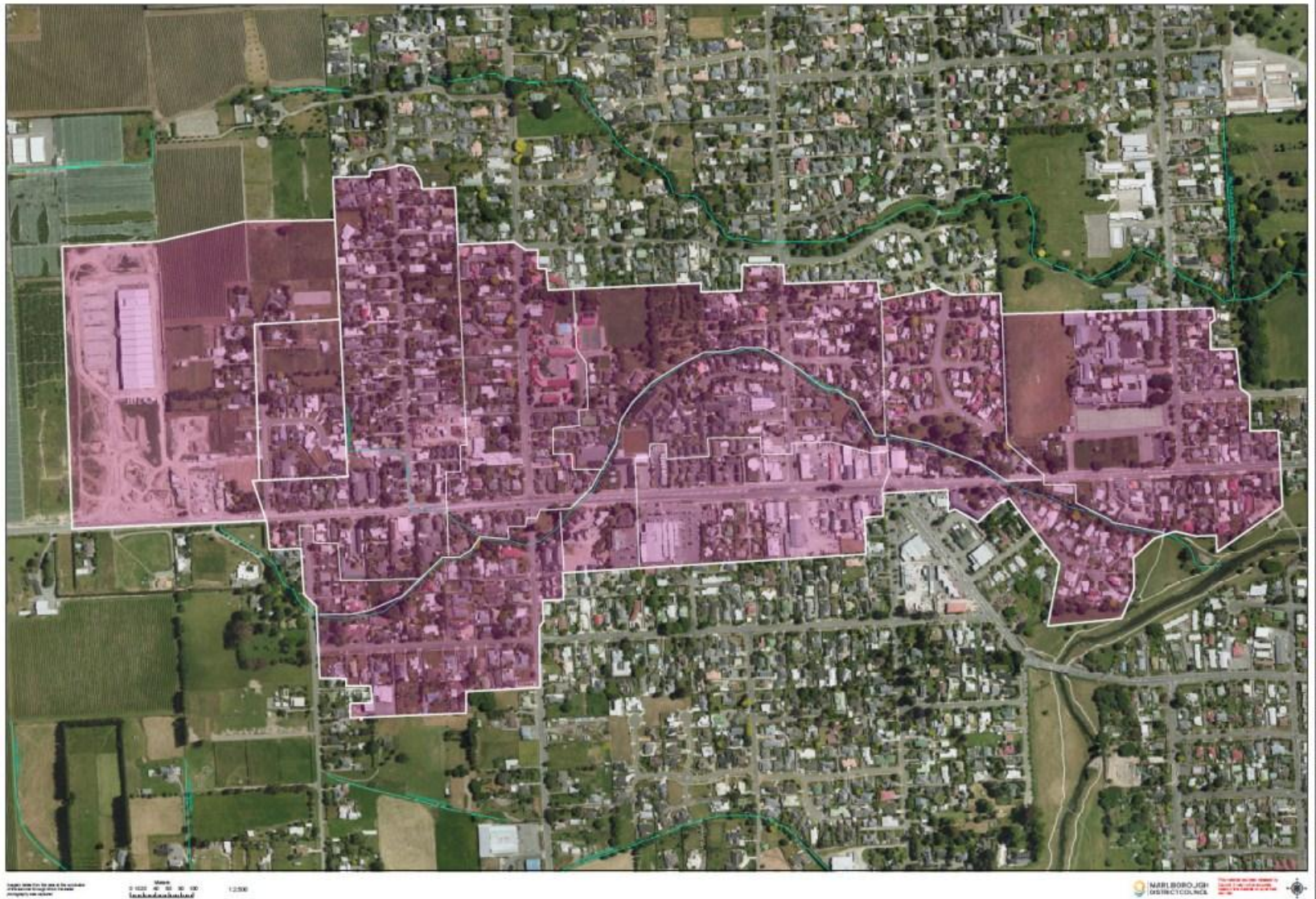


The Murphy's Creek Stormwater Catchment

The Urban Stormwater Catchment that drains to Murphy's Creek

Murphy's Creek Catchments



Points of **Input** to **Pipeline**



Middle Renwick Road Stormwater Pipeline

27/05/13

KEY

Urban / Res (New), C=0.25

Urban / Res (Exist with Infill, C=0.34)

Rural - Res, C=0.2

Pipeline

