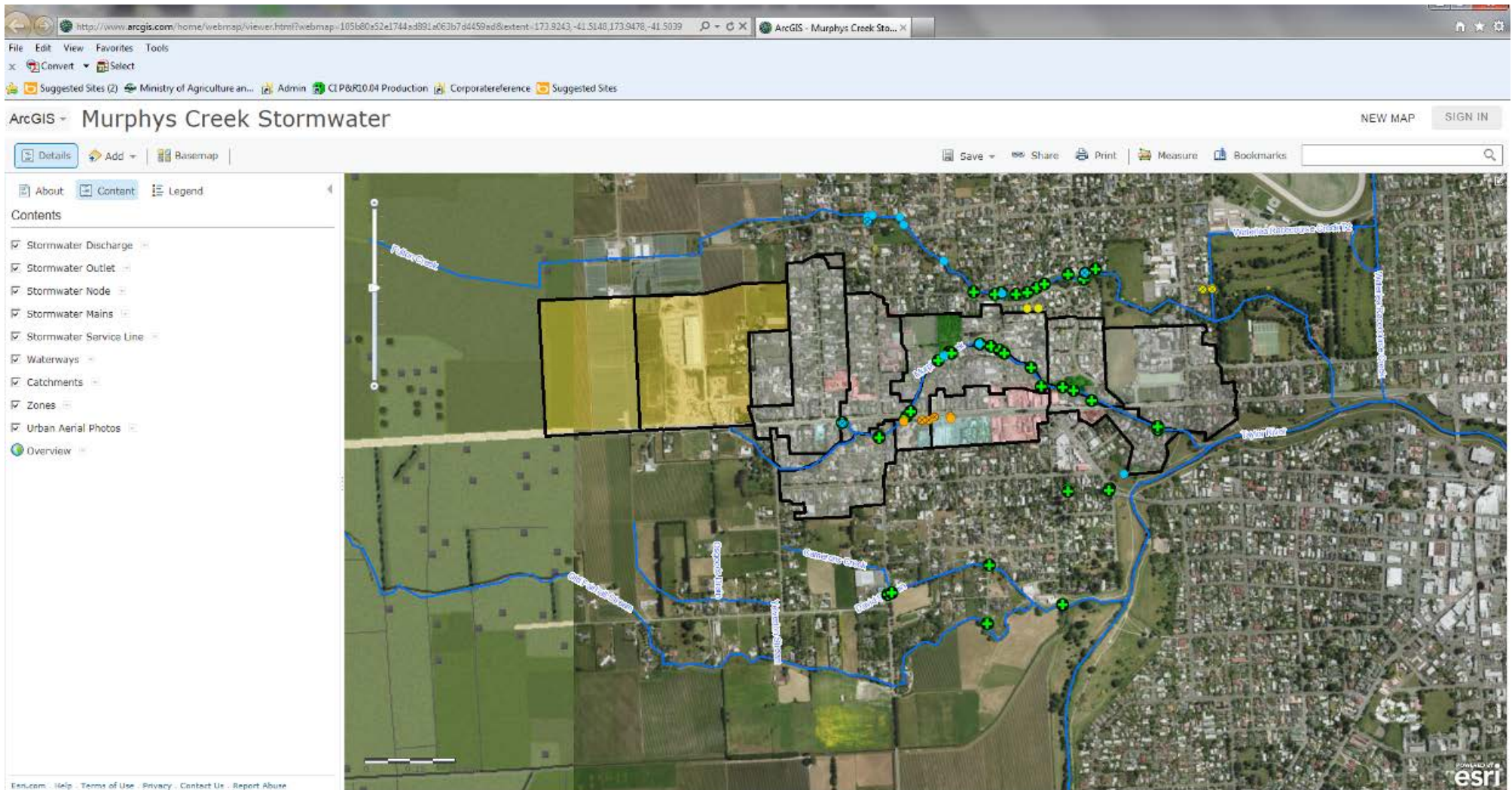


# Web-Based Map Tool for Murphys Creek.....???



# Overview – Catchment Boundaries



# Legend – Left hand Panel

The screenshot displays the ArcGIS web interface for 'Murphys Creek Stormwater'. The left-hand panel contains the legend, which is organized into several sections:

- Stormwater Discharge:** Lists various discharge types with colored circular markers: Commercial, Current (orange); Commercial, Past (brown); Communal, Current (yellow); Domestic, Current (green); Municipal, Current (blue); and Municipal, Past (teal).
- Stormwater Outlet:** Represented by a green cross-in-circle symbol.
- Waterways:** Represented by a blue line.
- Catchments:** Represented by a black outline.
- Zones:** Lists different land use zones with colored rectangular swatches: Conserv WAMP (C2) (light green); Industrial One Zone (I1) (pink); Neighbourhood Business Zone (N) (light blue); Rural Three Zone (R3) (yellow); and District Recreation Zone WAMP (RD2) (light green).

The main map area shows an aerial view of the Murphys Creek area with overlaid catchment boundaries and various symbols. A pop-up window titled 'Catchments:' is open over a yellow catchment area, displaying the following information:

- Zone % Description:** Rural Three Zone - 100%
- Zone Area Description:** Rural Three Zone - 14.069 ha
- Zoom to:** A button to zoom to the selected catchment.

The interface includes a top menu bar with 'File', 'Edit', 'View', 'Favorites', and 'Tools'. Below it are browser-style navigation elements like 'Convert', 'Select', and 'Suggested Sites'. The main header shows 'ArcGIS - Murphys Creek Stormwater' and 'NEW MAP SIGN IN'. A toolbar at the top right includes 'Save', 'Share', 'Print', 'Measure', and 'Bookmarks'. The bottom left corner contains 'Esri.com - Help - Terms of Use - Privacy - Contact Us - Report Abuse' and the Esri logo in the bottom right corner.

# Drill Down – See more detail

