

Xmas 2014



On Lighthouse Reef, 2014



Sally Peter
Cape Campbell Farm



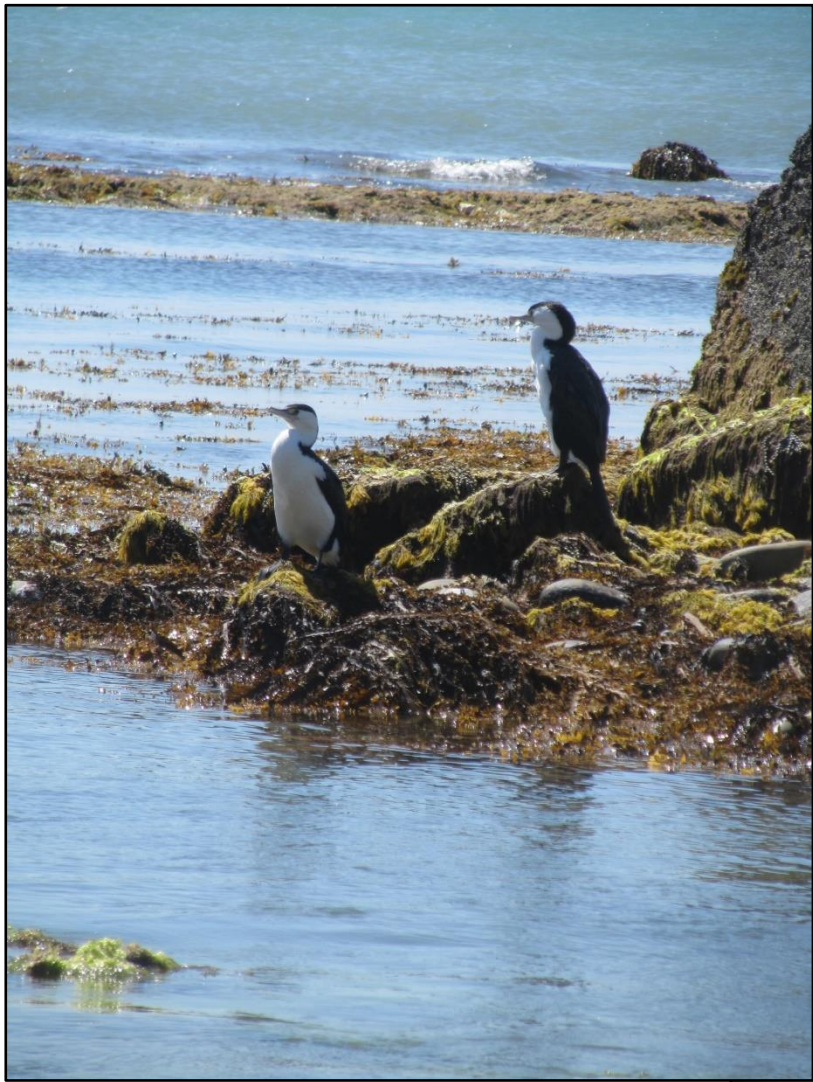


No kelp, Fyffe's Bay, Aug '18

AFTER







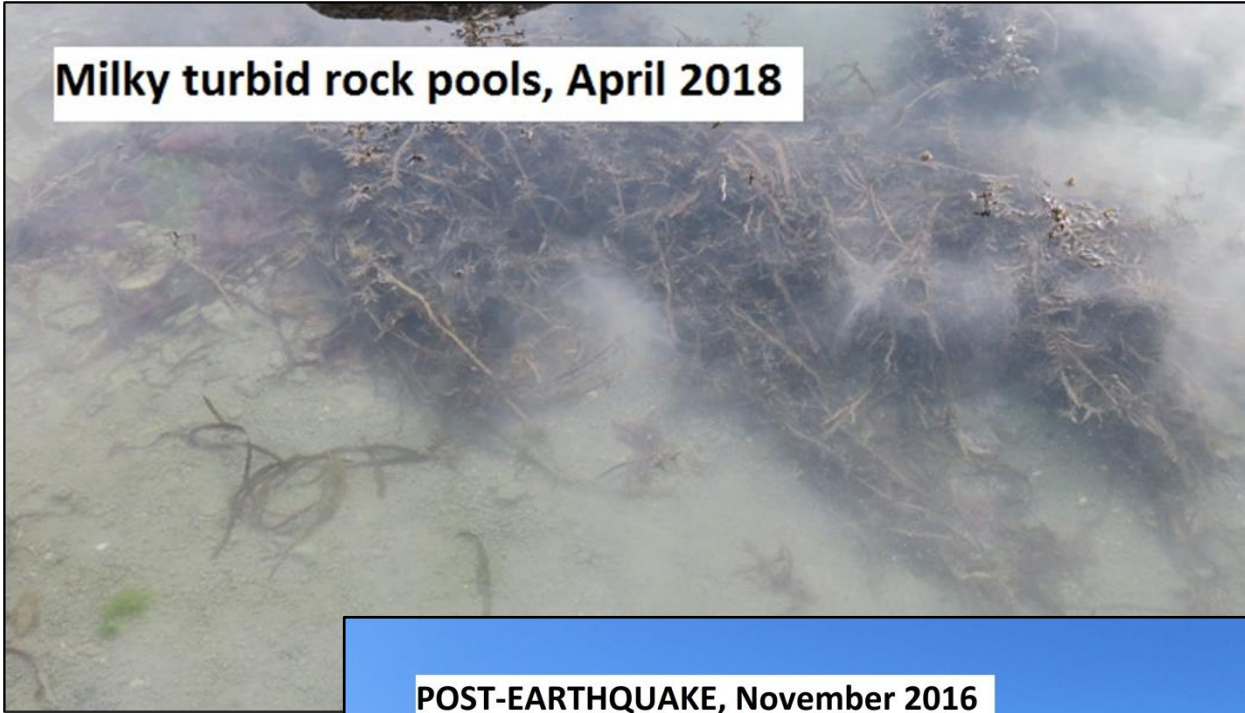


WEST OF LIGHTHOUSE
AFTER





Milky turbid rock pools, April 2018



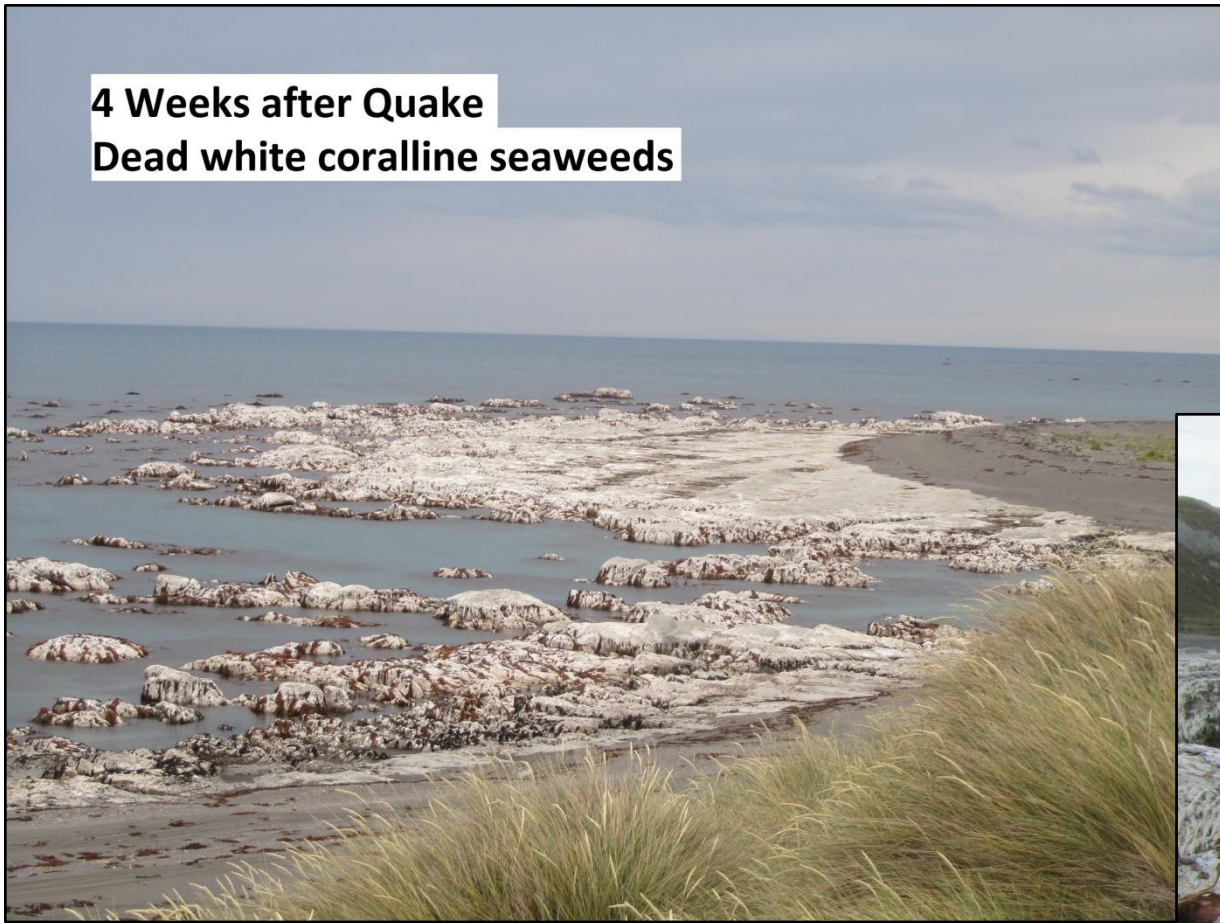
Dead and dying



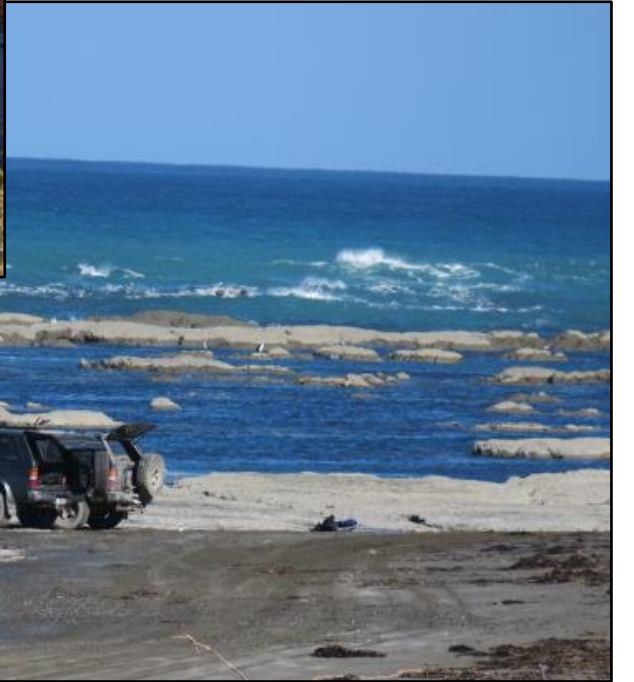
POST-EARTHQUAKE, November 2016



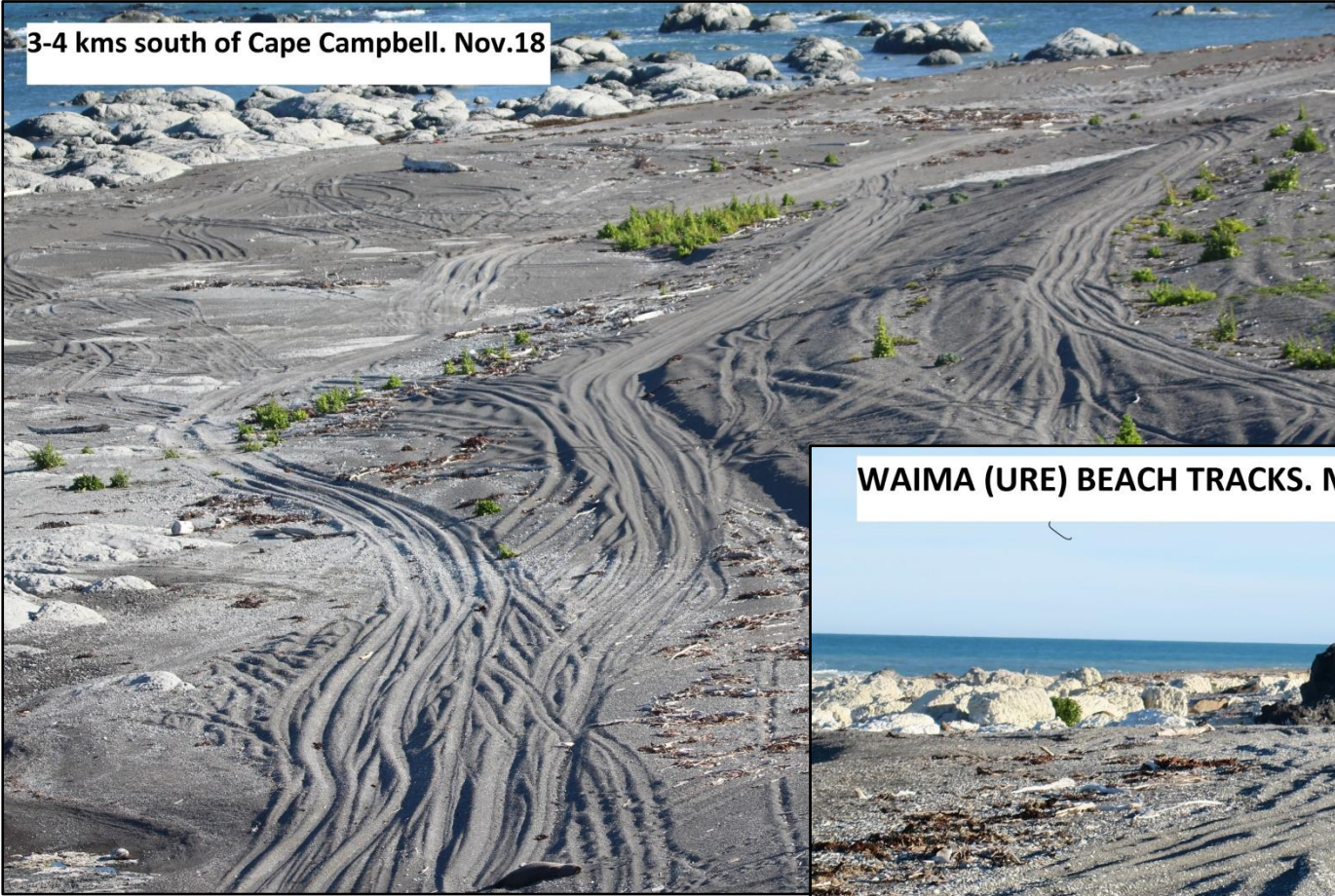
4 Weeks after Quake
Dead white coralline seaweeds







3-4 kms south of Cape Campbell. Nov.18



WAIMA (URE) BEACH TRACKS. MAY 2019

















