

Proposed Marlborough Environment Plan – Update 3

Volume 1 Chapter 9 – Public Access and Open Space

Minor Amendment

Page 3

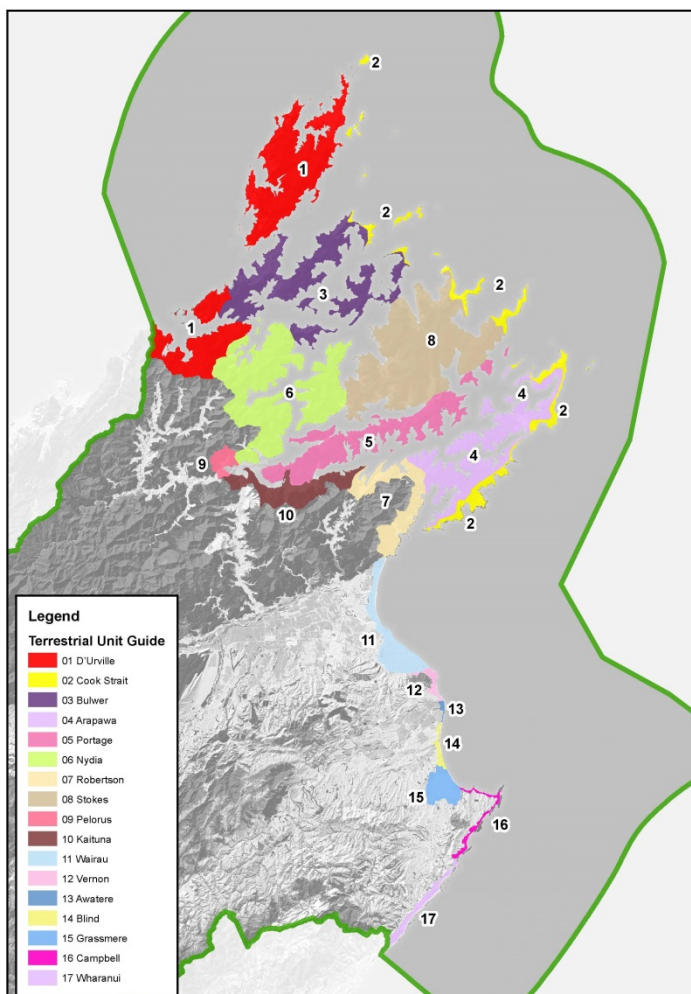
Policy 9.1.1(b) high priority waterbodies for public access on the Wairau Plain ([as shown in the overlay map](#)) and in close proximity to Picton, Waikawa, Havelock, Renwick, Seddon, Ward and Okiwi Bay;

Volume 3 Appendix 2 – Coastal Natural Character Schedule of Values

Minor Amendment

Page 28

Replacement image showing correct numbering for Robertson 07 and Stokes 08.



Volume 3 Appendix 13 – Register of Significant Heritage Resources

Schedule 3: Notable Trees

Page 12

MEP Reference	NZTR ref (if applicable)	Address / Location	Species Name	Common Name
25		11 Broadway St, Picton	<i>Fuscospora solandri</i>	tawhairauriki / black beech
32		61 York Street, Picton.	<i>Fuscospora</i> <i>Nothofagus solandri</i>	tawhairauriki / black beech
134		52 Percy St, Blenheim	<i>Pseudopanax</i> <i>Pseudopanax lessonii</i> <i>hybrid</i>	Lancewood hybrid

Page 19

140		52 Percy St, Blenheim	<i>Pseudopanax</i> <i>Pseudopanax ferox</i>	fierce lancewood
143		52 Percy St, Blenheim	<i>Nothofagus solandri</i> <i>var cliffortioides</i> <i>Fuscospora cliffortioides</i>	mountain beech
145A		52 Percy St, Blenheim	<i>Nothofagus</i> <i>Fuscospora</i> <i>fusca</i>	tawhairaunui / red beech
145B		52 Percy St, Blenheim	<i>Nothofagus</i> <i>Fuscospora</i> <i>fusca</i>	tawhairaunui / red beech

Volume 3 Appendix 14 – Schedule of Designated Land

Marlborough Lines Limited

Page 13

ID No.	Map No.	Site Description	Legal Description	Designation
E4	157	872 State Highway 63	Lots 1 & 2 DP 470193	Substation
E8	86, 158, 159	Bradleigh Park, Blenheim	Lot 7 DP 375994	Substation

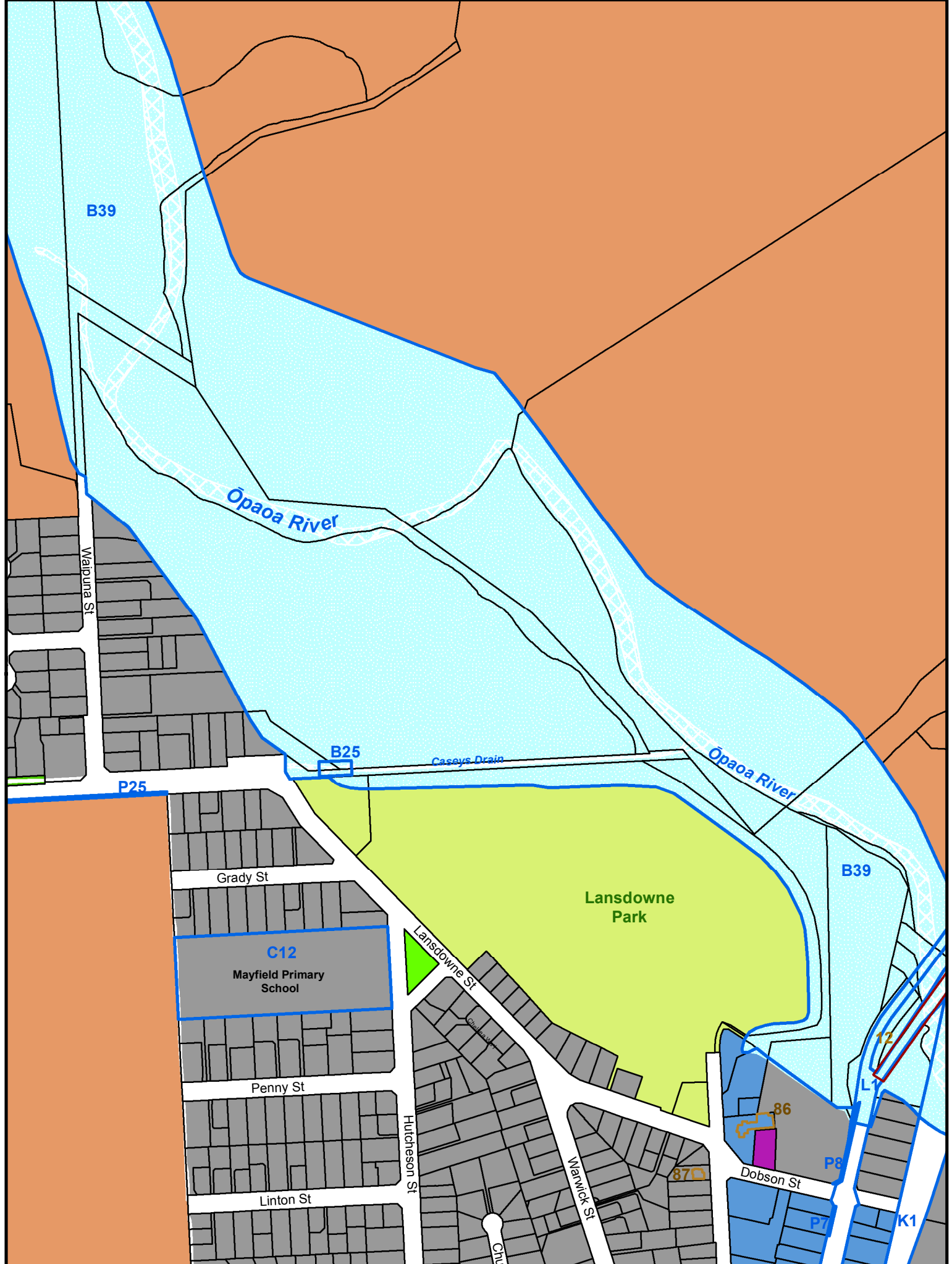
New Zealand Transport Agency

Page 24

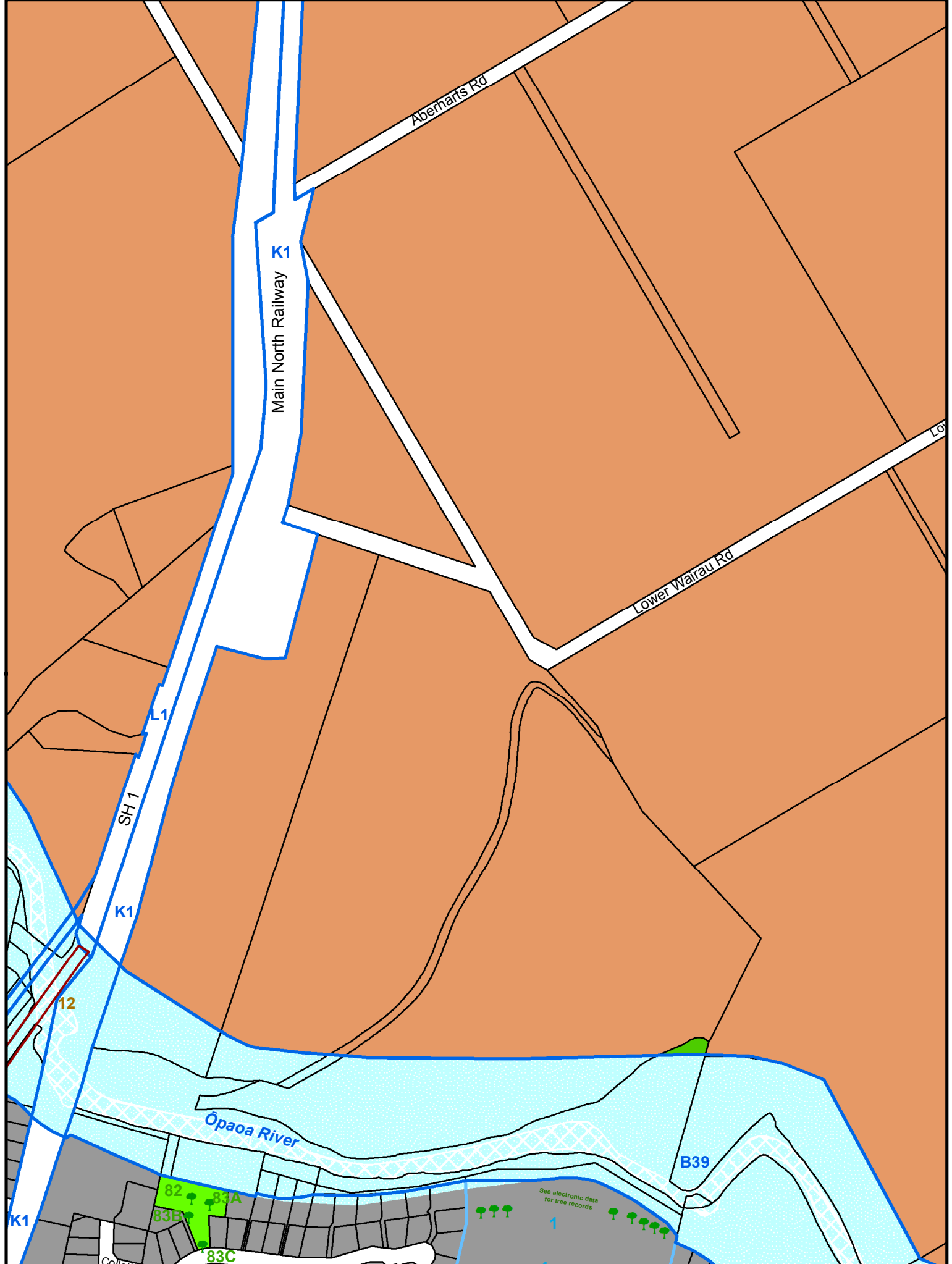
ID No.	Map No.	Site Description	Legal Description	Designation
L1	Numerous	State Highway 1		<p>State Highway Purposes (Alteration of existing designation to add an additional 384 square metres of land on the corner of State Highway 1 and State Highway 62 at Spring Creek – See DES0065)</p> <p>(Alteration of existing designation for State Highway 1 to provide for a new (additional) bridge and realigned approaches over the Ōpaoa River - see DES0075)</p>

Volume 4 Maps

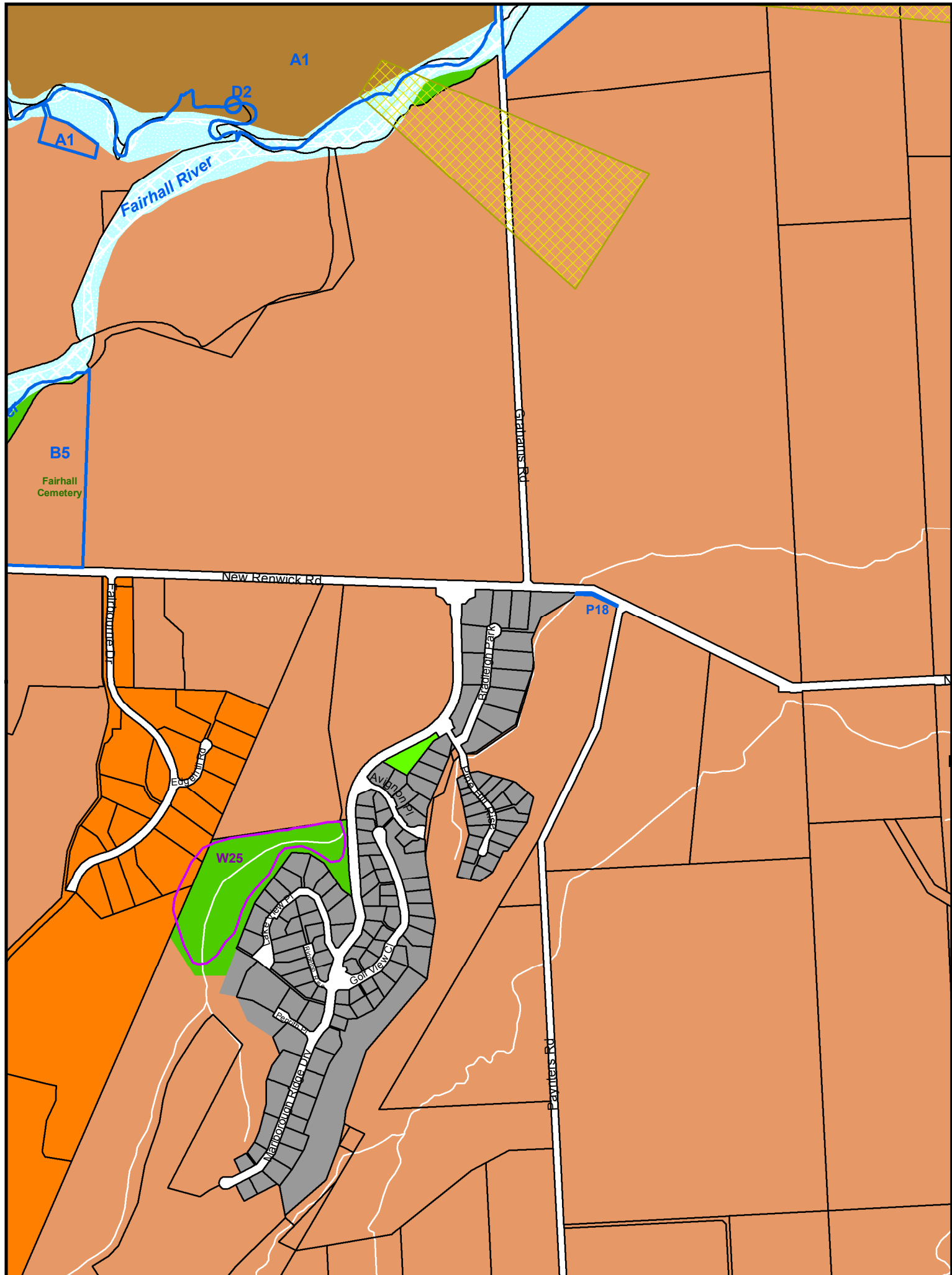
Map No.	Description	Legal Description
86, 158, 157, 159	Removal of designations at request of Marlborough Lines	Lots 1 & 2 DP 470193, Lot 7 DP 375994
4, 5, 159	Alteration to Designation DES0075. New Zealand Railways Corporation Designation altered re Ōpaoa Bridge replacement	

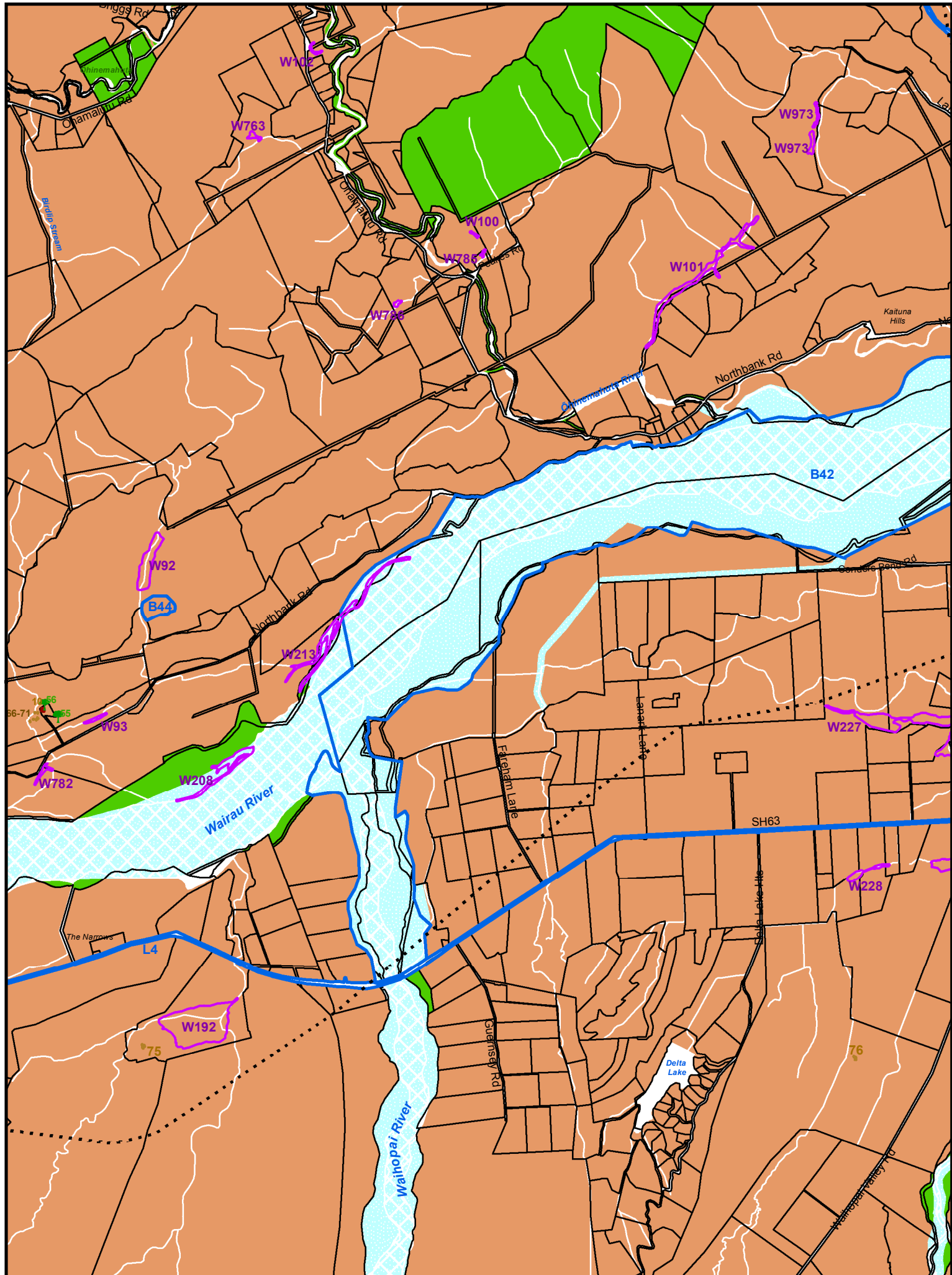


Date: 06/10/2017

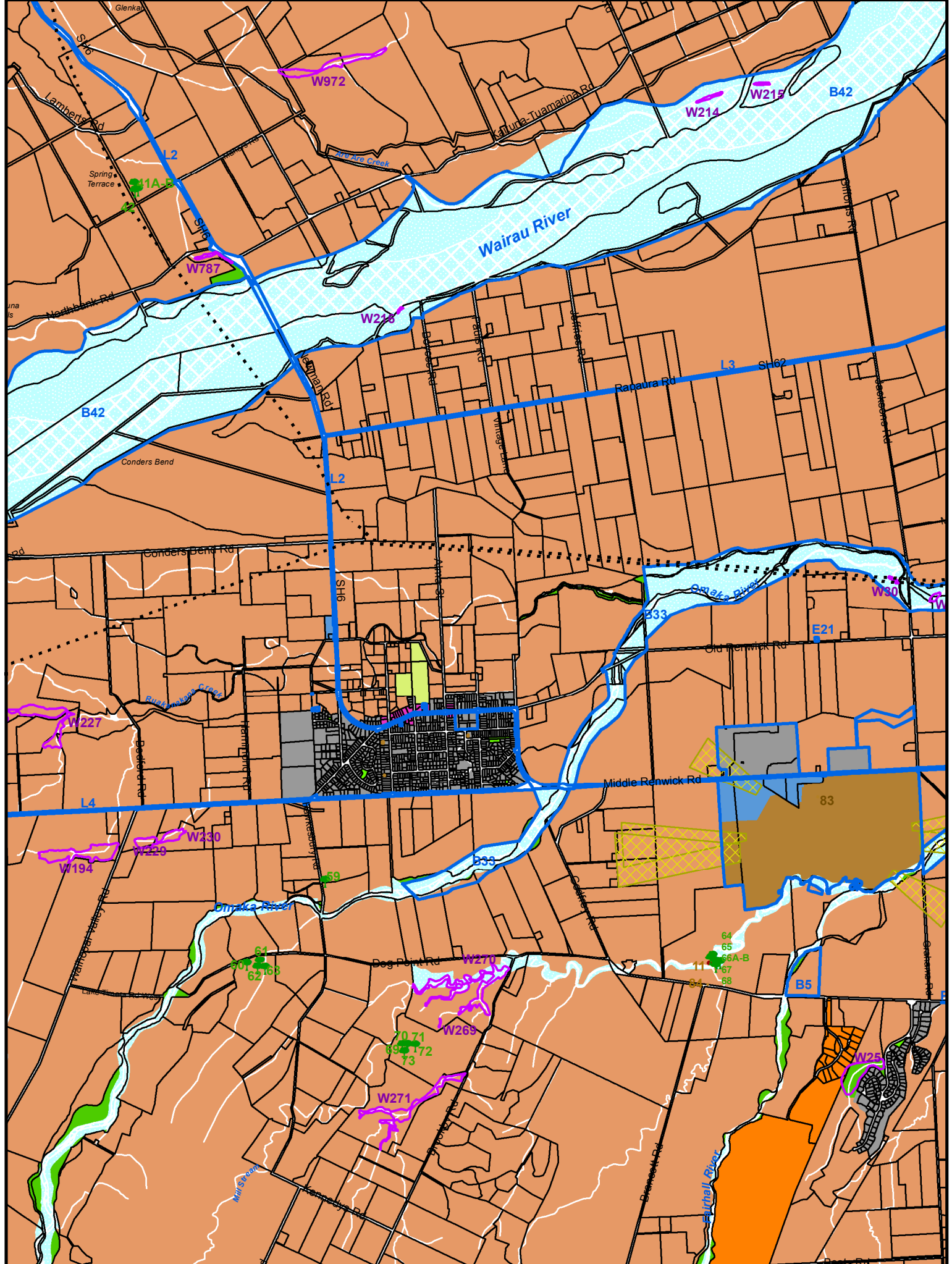


Date: 06/10/2017





Date: 06/10/2017



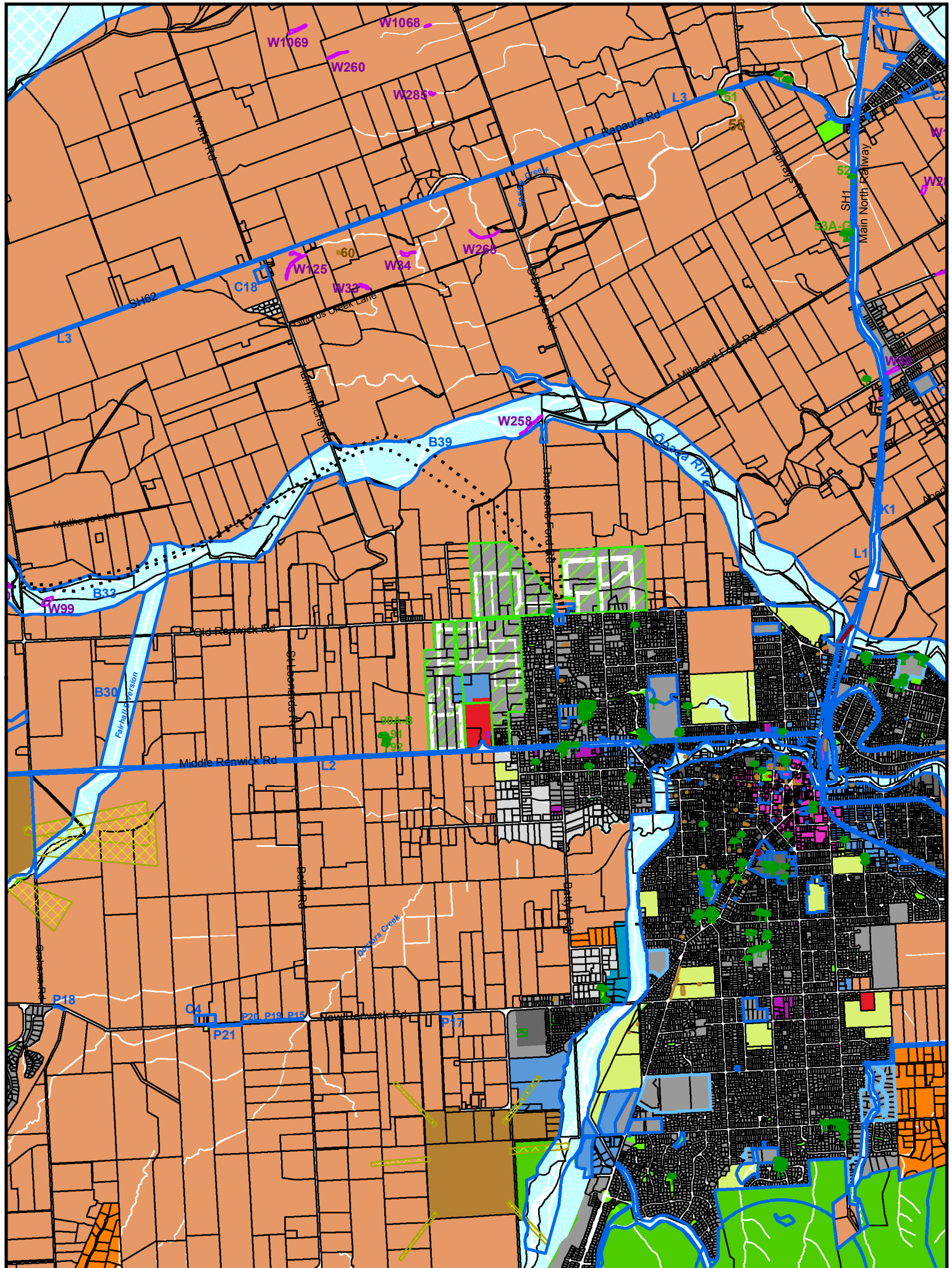
Date: 06/10/2017



158

157	148	159
	170	





Date: 06/10/2017