

Appendix 29

Marine Farming

Schedule 1: Marine Farms with an additional matter of control for benthic effects

Coastal Management Unit (CMU)	Admiralty Bay
	8015, 8016, 8017, 8019, 8021, 8022, 8023, 8024, 8026, 8028, 8029, 8031, 8036, 8496, 8039, 8041, 8042, 8043, 8044, 8045, 8046, 8047 [Removed] 8049, 8050, 8051, 8053.

Coastal Management Unit (CMU)	Anakoha Bay
	No MBES available for CMU. 8144, 8145, 8146, 8148, 8149, 8150, 8151, 8152, 8153, 8154, 8155, 8156, 8157, 8158, 8159, 8160, 8161 [Removed], 8162, 8163.

Coastal Management Unit (CMU)	Beatrix Bay
	8623 [Removed], 8240.

Commented [1]: KPF Investments Limited and United Fisheries Limited
ENV-2023-CHC-59

Commented [2]: KPF Investments Limited and United Fisheries Limited
ENV-2023-CHC-59

Commented [3]: KPF Investments Limited and United Fisheries Limited
ENV-2023-CHC-59

Commented [4]: WITHDRAWN:
Sanford Limited
ENV-2023-CHC-73
By memorandum dated 1 October 2024

Commented [5]: KPF Investments Limited and United Fisheries Limited
ENV-2023-CHC-59

Commented [6]: KPF Investments Limited and United Fisheries Limited
ENV-2023-CHC-59

Commented [7]: KPF Investments Limited and United Fisheries Limited
ENV-2023-CHC-59

Commented [8]: RESOLVED:
KPF Investments Limited and United Fisheries Limited
ENV-2023-CHC-59
By consent order dated 30 May 2024

Commented [9]: KPF Investments Limited and United Fisheries Limited
ENV-2023-CHC-59

Commented [10]: RESOLVED:
Marine Farming Association Incorporated
ENV-2023-CHC-62
By consent order dated 26 March 2025

Commented [11]: RESOLVED:
KPF Investments Limited and United Fisheries Limited
ENV-2023-CHC-59
By consent order dated 26 March 2025

Commented [12]: Beleve Limited, RJ Davidson Family Trust and Treble Tree Holdings Limited
ENV-2023-CHC-84

Commented [13]: RESOLVED:
KPF Investments Limited and United Fisheries Limited
ENV-2023-CHC-59
By consent order dated 30 May 2024

Commented [14]: RESOLVED:
Beleve Limited, RJ Davidson Family Trust and Treble Tree Holdings Limited
ENV-2023-CHC-84
By consent order dated 17 December 2024

Commented [15]: Beleve Limited, RJ Davidson Family Trust and Treble Tree Holdings Limited
ENV-2023-CHC-84

Coastal Management Unit (CMU)	Catherine Cove
No MBES available for CMU. 8007 , 8008 , 8634 [Removed], 8002 , 8006 , 8005 , 8004 , 8003 [Removed]	

Commented [16]: Talleys Group Limited
ENV-20232023-CHC-52

Commented [17]: Kapua Marine Farms Limited
ENV-20232023-CHC-57

Commented [18]: RESOLVED:
Aroma Aquaculture Limited
ENV-2023-CHC-50
By consent order dated 26 March 2025

Commented [19]: C. Elkington, T Elkington, S McCarthy,
Talley's, Kapua, Aroma Ltd and Aroma Aquaculture Limited
ENV-20232023-CHC-56

Commented [20]: Talleys Group Limited
ENV-20232023-CHC-52

Commented [21]: Kapua Marine Farms Limited
ENV-20232023-CHC-57

Commented [22]: Shane McCarthy
ENV-20232023-CHC-54

Commented [23]: RESOLVED:
Talleys Group Limited
ENV-20232023-CHC-52
By consent order dated 26 March 2025

Commented [24]: Marine Farming Association
Incorporated
ENV-2023-CHC-62

Coastal Management Unit (CMU)	Clova Bay
8547, 8555, 8264	

Coastal Management Unit (CMU)	Crail Bay
8516	

Commented [25]: Talleys Group Limited
ENV-2023-CHC-52

Coastal Management Unit (CMU)	East Bay
8398, 8401 , 8404.	

Commented [26]: Clearwater Mussels Ltd
ENV-2023-CHC-63

Coastal Management Unit (CMU)	Forsyth Bay
8108, 8112, 8115, 8117, 8118 , 8119 , 8122, 8127, 8128, 8129, 8130, 8133, 8134, 8500, 8141, 8143 .	

Commented [27]: WITHDRAWN:
Sanford Limited
ENV-2023-CHC-73
By memorandum dated 1 October 2024

Commented [28]: WITHDRAWN:
Sanford Limited
ENV-2023-CHC-73
By memorandum dated 1 October 2024

Commented [29]: WITHDRAWN:
Sanford Limited
ENV-2023-CHC-73
By memorandum dated 1 October 2024

Coastal Management Unit (CMU)	Hallam Cove
8191.	

Commented [30]: Ngāti Rārua Ātiawa Iwi Trust Board
ENV-2023-CHC-60

Commented [31]: RESOLVED:
Talleys Group Limited
ENV-20232023-CHC-52
Clearwater Mussels Ltd
ENV-2023-CHC-63
By consent order dated 26 March 2025

Commented [32]: WITHDRAWN:
Sanford Limited
ENV-2023-CHC-73
By memorandum dated 1 October 2024

Commented [33]: Clearwater Mussels Ltd
ENV-2023-CHC-63

Commented [34]: Talleys Group Limited
ENV-2023-CHC-52

Commented [35]: WITHDRAWN:
Sanford Limited
ENV-2023-CHC-73
By memorandum dated 1 October 2024

Commented [36]: Talleys Group Limited
ENV-2023-CHC-52

Commented [37]: WITHDRAWN:
Sanford Limited
ENV-2023-CHC-73
By memorandum dated 1 October 2024

Commented [38]: RESOLVED:
Talleys Group Limited
ENV-2023-CHC-52
By consent order dated 26 March 2025

Commented [39]: Clearwater Mussels Ltd
ENV-2023-CHC-63

Commented [40]: WITHDRAWN:
Sanford Limited
ENV-2023-CHC-73
By memorandum dated 1 October 2024

Commented [41]: WITHDRAWN:
Sanford Limited
ENV-2023-CHC-73
By memorandum dated 1 October 2024

Commented [42]: RESOLVED:
Apex Marine Farm Limited
ENV-2023-CHC-49
By consent order dated 26 March 2026

Coastal Management Unit (CMU)	Hikapu Reach
No MBES available for CMU. 8570 , 8391, 8392 , 8393 [Removed], 8394, 8395.	

Coastal Management Unit (CMU)	Inner Pelorus
8373 , 8372, 8371 , 8370 , 8374 , 8375 , 8389, 8388 , 8387, 8386 [Removed], 8385 , 8384 , 8383 , 8382 [Removed], 8376, 8377, 8378, 8379, 8380, 8381, 8348.	

Coastal Management Unit (CMU)	Kaiuma Bay
8477, 8657	

Coastal Management Unit (CMU)	Keneperu Bay
No MBES available for CMU.	
8463, 8464, 8465, 8466, 8467, 8457, 8458, 8459, 8460, 8461, 8462, 8468, 8469, 8470, 8471, 8472, 8473, 8474, 8475, 8476, 8478, 8479, 8480, 8481, 8482[Removed], 8483, 8484[Removed], 8485, 8486, 8487, 8488, 8489, 8490[Removed], 8491, 8646, 8495, 8563/8562, 8564, 8565, 8566, 8567.	

Coastal Management Unit (CMU)	Maud
8202, 8201, 8178, 8305, 8215.	

Coastal Management Unit (CMU)	Nydia Bay
MBES available for part of this CMU.	
8354, 8355[Removed], 8356, 8357[Removed], 8358, 8359, 8360, 8361.	

Commented [43]: Clause 16

Commented [44]: WITHDRAWN:
Sanford Limited
ENV-2023-CHC-73
By memorandum dated 1 October 2024

Commented [45]: Talleys Group Limited
ENV-2023-CHC-52

Commented [46]: WITHDRAWN:
Sanford Limited
ENV-2023-CHC-73
By memorandum dated 1 October 2024

Commented [47]: WITHDRAWN:
Sanford Limited
ENV-2023-CHC-73
By memorandum dated 1 October 2024

Commented [48]: Talleys Group Limited
ENV-2023-CHC-52

Commented [49]: WITHDRAWN:
Sanford Limited
ENV-2023-CHC-73
By memorandum dated 1 October 2024

Commented [50]: WITHDRAWN:
Sanford Limited
ENV-2023-CHC-73
By memorandum dated 1 October 2024

Commented [51]: WITHDRAWN:
Sanford Limited
ENV-2023-CHC-73
By memorandum dated 1 October 2024

Commented [52]: Clearwater Mussels Ltd ... [1]

Commented [53]: Talleys Group Limited ... [2]

Commented [54]: WITHDRAWN: ... [3]

Commented [55]: Talleys Group Limited ... [4]

Commented [56]: Talleys Group Limited ... [5]

Commented [57]: Aroma Aquaculture Limited ... [6]

Commented [58]: Talleys Group Limited ... [7]

Commented [59]: RESOLVED: ... [8]

Commented [60]: WITHDRAWN: ... [9]

Commented [61]: RESOLVED: ... [10]

Commented [62]: Aroma Aquaculture Limited ... [11]

Commented [63]: WITHDRAWN: ... [12]

Commented [64]: WITHDRAWN: ... [13]

Commented [65]: Clearwater Mussels Ltd ... [14]

Commented [66]: RESOLVED: ... [15]

Commented [67]: Aroma Aquaculture Limited ... [16]

Commented [68]: KPF Investments Limited and Ur ... [17]

Commented [69]: KPF Investments Limited and Ur ... [18]

Commented [70]: Clearwater Mussels Ltd ... [19]

Commented [71]: Talleys Group Limited ... [20]

Commented [72]: Aroma Aquaculture Limited ... [21]

Commented [73]: Aroma Aquaculture Limited ... [22]

Commented [74]: RESOLVED: ... [23]

Commented [75]: RESOLVED: ... [24]

Commented [76]: Aroma Aquaculture Limited ... [25]

Commented [77]: WITHDRAWN: ... [26]

Coastal Management Unit (CMU)	Port Gore
No MBES available for CMU.	
8168, 8598, 8169, 8170, 8171, 8172, 8599, 8626, 8173, 8591, 8174, 8167.	

Coastal Management Unit (CMU)	Port Ligar
8497, 8076.	

Coastal Management Unit (CMU)	Port Underwood
No MBES available for CMU.	
8456, 8455, 8454, 8453, 8628, 8452, 8451, 8450, 8449, 8448, 8447, 8446, 8444, 8443 A, 8443 B[Removed], 8442, 8441, 8440, 8439, 8438[Removed], 8437, 8436, 8581[Removed], 8435, 8434, 8433, 8432, 8431, 8616, 8615, 8430, 8428, 8429, 8427, 8426[Removed], 8425, 8424, 8423[Removed], 8422, 8421, 8420, 8419, 8640, 8416[Removed], 8415.	

Coastal Management Unit (CMU)	South of French Pass
No MBES available for CMU.	
8012, 8010, 8011, 8009[Removed].	

Commented [78]: WITHDRAWN:
Sanford Limited
ENV-2023-CHC-73
By memorandum dated 1 October 2024

Commented [79]: Talleys Group Limited
ENV-2023-CHC-52

Commented [80]: Talleys Group Limited
ENV-2023-CHC-52

Commented [81]: RESOLVED:
Marine Farming Association Incorporated
ENV-2023-CHC-62
By consent order dated 26 March 2025

Commented [82]: WITHDRAWN:
Sanford Limited
ENV-2023-CHC-73
By memorandum dated 1 October 2024

Commented [83]: WITHDRAWN:
Sanford Limited
ENV-2023-CHC-73
By memorandum dated 1 October 2024

Commented [84]: RESOLVED:
Aroma Aquaculture Limited
ENV-2023-CHC-50
By consent order dated 26 March 25

Commented [85]: WITHDRAWN:
Sanford Limited
ENV-2023-CHC-73
By memorandum dated 1 October 2024

Commented [86]: RESOLVED:
Talleys Group Limited
ENV-2023-CHC-52
By consent order dated 26 March 2025

Commented [87]: RESOLVED:
Ayakulik Limited
ENV-2023-CHC-76
By consent order dated 26 March 2025

Commented [88]: Apex Marine Farm Limited
ENV-2023-CHC-49

Commented [89]: Apex Marine Farm Limited
ENV-2023-CHC-49

Commented [90]: Talleys Group Limited
ENV-2023-CHC-52

Commented [91]: Talleys Group Limited
ENV-2023-CHC-52

Commented [92]: RESOLVED:
Apex Marine Farm Limited
ENV-2023-CHC-49

Commented [93]: RESOLVED:
Talleys Group Limited

Commented [94]: Talleys Group Limited
ENV-2023-CHC-52

Commented [95]: Talleys Group Limited
ENV-2023-CHC-52

Commented [96]: Talleys Group Limited
ENV-2023-CHC-52

Commented [97]: RESOLVED:
Aroma Aquaculture Limited

Commented [98]: WITHDRAWN:
Sanford Limited

Commented [99]: Clearwater Mussels Ltd
ENV-2023-CHC-63

Commented [100]: RESOLVED:
Clearwater Mussels Ltd

Coastal Management Unit (CMU)	Squally Cove
No MBES available for CMU.	
8298[Removed], 8297, 8296, 8636[Removed], 8621, 8620, 8293, 8292, 8291, 8290, 8622, 8289, 8288, 8287, 8286, 8505, ASA 2, 8285, 8283, 8282b, 8282a, 8281, 8280, 8279, 8277, 8504, 8276, 8275, 8273, 8273, 8272, 8271, ASA 1, 8627, 8270, 8269[Removed], 8268, 8267, 8266, 8282c.	

- Commented [101]:** RESOLVED:
Talleys Group Limited
ENV-2023-CHC-52
By consent order dated 26 March 2025
- Commented [102]:** RESOLVED:
Talleys Group Limited
ENV-2023-CHC-52
By consent order dated 26 March 2025
- Commented [103]:** MacLab (NZ) Limited & MacLab (NZ)
Marine Assets Limited
ENV-2023-CHC-65
- Commented [104]:** Marine Farming Association
Incorporated
ENV-2023-CHC-62
- Commented [105]:** WITHDRAWN:
Sanford Limited
ENV-2023-CHC-73
By memorandum dated 1 October 2024
- Commented [106]:** WITHDRAWN:
Sanford Limited
ENV-2023-CHC-73
By memorandum dated 1 October 2024
- Commented [107]:** WITHDRAWN:
Sanford Limited
ENV-2023-CHC-73
By memorandum dated 1 October 2024
- Commented [108]:** RESOLVED:
David Hogg & PB Partnership
ENV-2023-CHC-64
By consent order dated 26 March 2025
- Commented [109]:** MacLab (NZ) Limited & MacLab (NZ)
Marine Assets Limited
ENV-2023-CHC-65
- Commented [110]:** WITHDRAWN:
Sanford Limited
ENV-2023-CHC-73
By memorandum dated 1 October 2024

Schedule 2: Replacement Space for Marine Farms in Inappropriate Locations

Inappropriate Marine Farm		Relocation AMAs(s)					
Marine Farm	Current Consented Lines and Total Length	AMA Relocated To (from Aquaculture Management Areas Overlay)	CMU	Current Consented Lines and Total Length	Additional Lines and Total Length	Aggregate Lines and Total Length	Map No.
MF 8040	5 lines, 600m total length	8040	Admiralty Bay	5 lines, 600m total length	0	5 lines, 600m total length	1

Commented [111]: Marine Farming Association and Aquaculture New Zealand
ENV-2023-CHC-62

Commented [112]: WITHDRAWN:
Sanford Limited
ENV-2023-CHC-73
Include AMA 8034, 8035, 8042, 8039, 8206, 8044, 8361, 8365, 8368, 8348, 8600/8349, 8139, 8140, 8116
By memorandum dated 1 October 2024

Commented [113]: WITHDRAWN:
Sanford Limited
ENV-2023-CHC-73
By memorandum dated 1 October 2024

Map 1

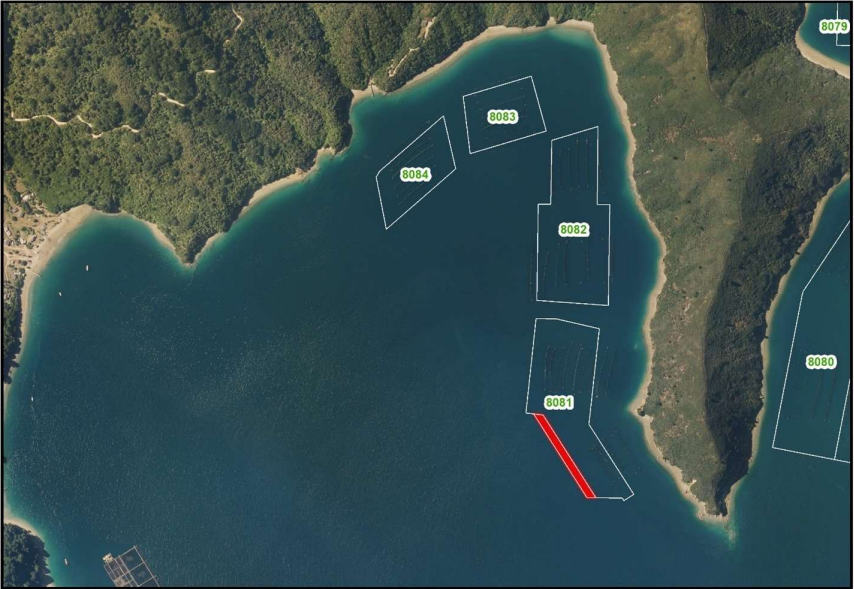


Inappropriate Marine Farm		Relocation AMAs(s)					
Marine Farm	Current Consented Lines and Total Length	AMA Relocated To (from Aquaculture Management Areas Overlay)	CMU	Current Consented Lines and Total Length	Additional Lines and Total Length	Aggregate Lines and Total Length	Map No.
MF 8083	9 lines, 918m total length	8081	Waitata Reach	15 lines, 1,500m total length	102m, 1 line	16 lines, 1,602m total length	2

Commented [114]: Marine Farming Association
ENV-2023-CHC-62

Commented [115]: Marine Farming Association
ENV-2023-CHC-62

Map 2



<u>Inappropriate Marine Farm</u>		<u>Relocation AMAs(s)</u>					
<u>Marine Farm</u>	<u>Current Consented Lines and Total Length</u>	<u>AMA Relocated To (from Aquaculture Management Areas Overlay)</u>	<u>CMU</u>	<u>Current Consented Lines and Total Length</u>	<u>Additional Lines and Total Length</u>	<u>Aggregate Lines and Total Length</u>	<u>Map No.</u>
<u>MF 8188</u>	<u>8 lines, 1,200m total length</u>	<u>8260</u>	<u>Beatrix Bay</u>	<u>6 lines, 936m total length</u>	<u>4 lines, 600m</u>	<u>10 lines, 1,536m total length</u>	<u>3</u>
		<u>8074</u>	<u>Port Ligar</u>	<u>10 lines, 1,100m total length</u>	<u>3 lines, 300m</u>	<u>13 lines, 1,400m total length</u>	<u>4</u>
		<u>8065</u>	<u>Port Ligar</u>	<u>10 lines, 1000m total length</u>	<u>3 lines, 300m</u>	<u>13 lines, 1,300m total length</u>	<u>5</u>

Commented [116]: Clearwater Mussels Ltd
ENV-2023-CHC-63

Commented [117]: KPF Investments Limited and United Fisheries Limited
ENV-2023-CHC-59

Commented [118]: KPF Investments Limited and United Fisheries Limited
ENV-2023-CHC-59

Map 3



[Map 4](#)



[Map 5](#)



<u>Inappropriate Marine Farm</u>		<u>Relocation AMAs(s)</u>					
<u>Marine Farm</u>	<u>Current Consented Lines and Total Length</u>	<u>AMA Relocated To (from Aquaculture Management Areas Overlay)</u>	<u>CMU</u>	<u>Current Consented Lines and Total Length</u>	<u>Additional Lines and Total Length</u>	<u>Aggregate Lines and Total Length</u>	<u>Map No.</u>
MF 8212	10 lines, 1,100m total length	8348	Inner Pelorus	16 lines, 1,935m total length	4 lines, 180m total length	20 lines, 2,115m total length	6
		8344	Inner Pelorus	10 lines, 1,388m total length	2 lines, 220m total length	12 lines, 1,608m total length	7
		8313	Maud	30 lines, 5,263m total length	2 lines, 260m total length	32 lines, 5,523m total length	8
		8508	Maud	24 lines, 2,640m total length	4 lines, 440m total length	28 lines, 3,080m total length	9

Commented [119]: WITHDRAWN:
 Sanford Limited
 ENV-2023-CHC-73
 By memorandum dated 1 October 2024

Map 6



[Map 7](#)



[Map 8](#)



Map 9



Appeal

<u>Inappropriate Marine Farm</u>		<u>Relocation AMAs(s)</u>					
<u>Marine Farm</u>	<u>Current Consented Lines and Total Length</u>	<u>AMA Relocated To (from Aquaculture Management Areas Overlay)</u>	<u>CMU</u>	<u>Current Consented Lines and Total Length</u>	<u>Additional Lines and Total Length</u>	<u>Aggregate Lines and Total Length</u>	<u>Map No.</u>
MF 8220	21 lines, 1,886m total length	8221	Maud	8 lines, 864m total length	1 line, 108m total length	9 lines, 972m total length	10
		8219	Maud	18 lines, 1,567m total length	4 lines, 332m total length	22 lines, 1,899m total length	11

Map 10



Map 11



Appeal

Inappropriate Marine Farm		Relocation AMAs(s)					
Marine Farm	Current Consented Lines and Total Length	AMA Relocated To (from Aquaculture Management Areas Overlay)	CMU	Current Consented Lines and Total Length	Additional Lines and Total Length	Aggregate Lines and Total Length	Map No.
MF 8231	14 lines, 1,770m total length	8233	Beatrix Bay	12 lines, 1,680m total length	202m	12 lines, 1,882m total length	12

Map 12



<u>Inappropriate Marine Farm</u>		<u>Relocation AMAs(s)</u>					
<u>Marine Farm</u>	<u>Current Consented Lines and Total Length</u>	<u>AMA Relocated To (from Aquaculture Management Areas Overlay)</u>	<u>CMU</u>	<u>Current Consented Lines and Total Length</u>	<u>Additional Lines and Total Length</u>	<u>Aggregate Lines and Total Length</u>	<u>Map No.</u>
MF 8243	16 lines, 2,355m total length	8237	Beatrix Bay	22 lines, 2,200m total length	100m	23 lines, 2,300m total length	13

Commented [120]: WITHDRAWN:
 Sanford Limited
 ENV-2023-CHC-73
 By memorandum dated 1 October 2024

Map 13



<u>Inappropriate Marine Farm</u>		<u>Relocation AMAs(s)</u>					
<u>Marine Farm</u>	<u>Current Consented Lines and Total Length</u>	<u>AMA Relocated To (from Aquaculture Management Areas Overlay)</u>	<u>CMU</u>	<u>Current Consented Lines and Total Length</u>	<u>Additional Lines and Total Length</u>	<u>Aggregate Lines and Total Length</u>	<u>Map No.</u>
<u>MF 8244</u>	<u>10 lines, 2,009m total length</u>	<u>8251</u>	<u>Beatrix Bay</u>	<u>13 lines, 2,487m total length</u>	<u>724m</u>	<u>17 lines, 3,211m total length</u>	<u>14</u>

Map 14

<u>Inappropriate Marine Farm</u>		<u>Relocation AMAs(s)</u>					
<u>Marine Farm</u>	<u>Current Consented Lines and Total Length</u>	<u>AMA Relocated To (from Aquaculture Management Areas Overlay)</u>	<u>CMU</u>	<u>Current Consented Lines and Total Length</u>	<u>Additional Lines and Total Length</u>	<u>Aggregate Lines and Total Length</u>	<u>Map No.</u>
MF 8247	6 lines, 1.151m total length	8236	Beatrix Bay	30 lines, 4.283m total length	4 lines, 600m	34 lines, 4.883m total length	15

Commented [121]: WITHDRAWN:
Sanford Limited
ENV-2023-CHC-73
By memorandum dated 1 October 2024

Map 15



Inappropriate Marine Farm		Relocation AMAs(s)					
Marine Farm	Current Consented Lines and Total Length	AMA Relocated To (from Aquaculture Management Areas Overlay)	CMU	Current Consented Lines and Total Length	Additional Lines and Total Length	Aggregate Lines and Total Length	Map No.
MF 8312	3 lines, 384m total length	8312	Maud	3 lines, 384m total length	0	3 lines, 384m total length	16

Commented [122]: Talleys Group Limited
ENV-2023-CHC-52

Map 16



<u>Inappropriate Marine Farm</u>		<u>Relocation AMAs(s)</u>					
<u>Marine Farm</u>	<u>Current Consented Lines and Total Length</u>	<u>AMA Relocated To (from Aquaculture Management Areas Overlay)</u>	<u>CMU</u>	<u>Current Consented Lines and Total Length</u>	<u>Additional Lines and Total Length</u>	<u>Aggregate Lines and Total Length</u>	<u>Map No.</u>
MF 8492	16 lines, 2,500m total length	8080	Port Ligar	17 lines, 2,742m total length	8 lines, 1282m total length	25 lines, 4,024m total length	17
		8336	Inner Pelorus	6 lines, 1,312m total length	1 line, 215m total length	7 lines, 1,527m total length	18
		8332	Inner pelorus	10 lines, 750m total length	3 lines, 318m total length	10 lines, 1,068m total length	19
		8351	Inner Pelorus	9 lines, 990m total length	1 line, 110m total length	10 lines, 1,100m total length	20
		8541	Crail Bay	11 lines, 2,449m total length	2 lines, 120m total length	13 lines, 2,569m total length	21
		8316	Maud	9 lines, 1,145m total length	2 lines, 235m total length	11 lines, 1,380m total length	22
		8225 [deleted]					
		8210	Maud	15 lines, 2,925m total length	2 lines, 220m total length	13 lines, 1,430m total length	24

Commented [123]: RESOLVED:
KPF Investments Limited and United Fisheries Limited
ENV-2023-CHC-59
By consent order dated 30 May 2024

Commented [124]: KPF Investments Limited and United Fisheries Limited
ENV-2023-CHC-59

Commented [125]: KPF Investments Limited and United Fisheries Limited
ENV-2023-CHC-59

Commented [126]: KPF Investments Limited and United Fisheries Limited
ENV-2023-CHC-59

Commented [127]: KPF Investments Limited and United Fisheries Limited
ENV-2023-CHC-59

Commented [128]: KPF Investments Limited and United Fisheries Limited
ENV-2023-CHC-59

Commented [129]: RESOLVED:
KPF Investments Limited and United Fisheries Limited
ENV-2023-CHC-59
By consent order 30 May 2024

Commented [130]: KPF Investments Limited and United Fisheries Limited
ENV-2023-CHC-59

[Map 17](#)



[Map 18](#)



[Map 19](#)



[Map 20](#)



[Map 21](#)[Map 22](#)

Commented [131]: By consent order dated 30 May 2024

[Map 23](#)



[Map 24](#)



Inappropriate Marine Farm		Relocation AMAs(s)					
Marine Farm	Current Consented Lines and Total Length	AMA Relocated To (from Aquaculture Management Areas Overlay)	CMU	Current Consented Lines and Total Length	Additional Lines and Total Length	Aggregate Lines and Total Length	Map No.
MF 8506	4 lines, 512m total length	8506	Maud	4 lines, 512m total length	512m	2 lines, 512m total length	25

Commented [132]: Talleys Group Limited
ENV-2023-CHC-52

Map 25



<u>Inappropriate Marine Farm</u>		<u>Relocation AMAs(s)</u>					
<u>Marine Farm</u>	<u>Current Consented Lines and Total Length</u>	<u>AMA Relocated To (from Aquaculture Management Areas Overlay)</u>	<u>CMU</u>	<u>Current Consented Lines and Total Length</u>	<u>Additional Lines and Total Length</u>	<u>Aggregate Lines and Total Length</u>	<u>Map No.</u>
MF 8522	12 lines, 1,461m total length	8524	Crail Bay	12 lines, 1,320m total length	15m	12 lines, 1,335m total length	26
		8523	Crail Bay	10 lines, 1,000m total length	2 lines, 320m total length	12 lines, 1,320m total length	27

Map 26



[Map 27](#)



<u>Inappropriate Marine Farm</u>		<u>Relocation AMAs(s)</u>					
<u>Marine Farm</u>	<u>Current Consented Lines and Total Length</u>	<u>AMA Relocated To (from Aquaculture Management Areas Overlay)</u>	<u>CMU</u>	<u>Current Consented Lines and Total Length</u>	<u>Additional Lines and Total Length</u>	<u>Aggregate Lines and Total Length</u>	<u>Map No.</u>
MF 8539	6 lines, 990m total length	8534	Craill Bay	9 lines, 1,609m total length	3 lines, 498m	12 lines, 2,107m total length	28
		8535	Craill Bay	19 lines, 2,669m total length	272m	12 lines, 2,941m total length	29
		8538	Craill Bay	12 lines, 1,320m total length	2 lines, 220m	14 lines, 1,540m total length	30

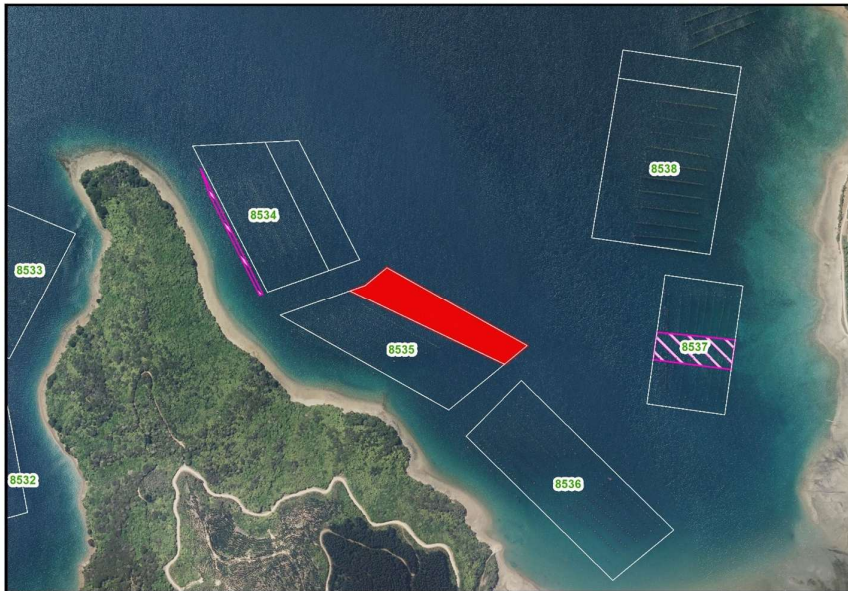
Commented [133]: WITHDRAWN:
Sanford Limited
ENV-2023-CHC-73
By memorandum dated 1 October 2024

Commented [134]: WITHDRAWN:
Sanford Limited
ENV-2023-CHC-73
By memorandum dated 1 October 2024

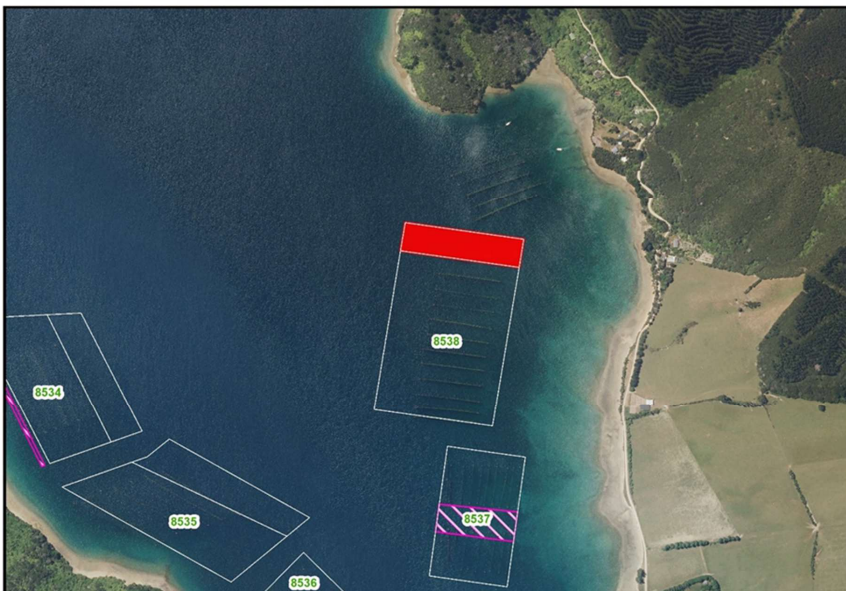
Map 28



[Map 29](#)



[Map 30](#)



<u>Inappropriate Marine Farm</u>		<u>Relocation AMAs(s)</u>					
<u>Marine Farm</u>	<u>Current Consented Lines and Total Length</u>	<u>AMA Relocated To (from Aquaculture Management Areas Overlay)</u>	<u>CMU</u>	<u>Current Consented Lines and Total Length</u>	<u>Additional Lines and Total Length</u>	<u>Aggregate Lines and Total Length</u>	<u>Map No.</u>
<u>MF 8552</u>	<u>15 lines, 2.405m total length</u>	<u>8557</u>	<u>Clova Bay</u>	<u>13 lines, 2.115m total length</u>	<u>2 lines, 157m total length</u>	<u>15 lines, 2.272m total length</u>	<u>31</u>

Commented [135]: Talleys Group Limited
ENV-2023-CHC-52

Commented [136]: Talleys Group Limited
ENV-2023-CHC-52

Map 31



Inappropriate Marine Farm		Relocation AMAs(s)					
Marine Farm	Current Consented Lines and Total Length	AMA Relocated To (from Aquaculture Management Areas Overlay)	CMU	Current Consented Lines and Total Length	Additional Lines and Total Length	Aggregate Lines and Total Length	Map No.
MF8325	10 lines, 1100m total length	8325	Waitata Reach	0	14 lines, 1100m total length	14 lines, 1100m total length	32

Commented [137]: By consent order dated 19 December 2024

Map 32



Inappropriate Marine Farm		Relocation AMAs(s)					
Marine Farm	Current Consented Lines and Total Length	AMA Relocated To (from Aquaculture Management Areas Overlay)	CMU	Current Consented Lines and Total Length	Additional Lines and Total Length	Aggregate Lines and Total Length	Map No.
MF8326	20 lines, 2200m total length	8326	Waitata Reach	0	14 lines, 1409m total length	14 lines, 1409m total length	33

Commented [138]: By consent order dated 19 December 2024

Map 33



Inappropriate Marine Farm		Relocation AMAs(s)					
Marine Farm	Current Consented Lines and Total Length	AMA Relocated To (from Aquaculture Management Areas Overlay)	CMU	Current Consented Lines and Total Length	Additional Lines and Total Length	Aggregate Lines and Total Length	Map No.
MF8327	11 lines, 1540m total length	8327	Waitata Reach	0	14 lines, 1316m total length	14 lines, 1316m total length	34

Commented [139]: By consent order dated 19 December 2024

Map 34



Schedule 3: Replacement Space for Marine Farms in Inappropriate Locations and with an additional matter of control for benthic effects

Inappropriate Marine Farm		Relocation AMAs(s)					
Marine Farm	Current Consented Lines and Total Length	AMA Relocated To (from Aquaculture Management Areas Overlay)	CMU	Current Consented Lines and Total Length	Additional Lines and Total Length	Aggregate Lines and Total Length	Map No.
MF 8495	11 lines, 2,183m total length.	8565	Keneperu	20 lines, 3,200m total length.	320m, 2 lines	22 lines, 3,520m total length.	1
		8563[deleted] / 8562	Keneperu	31 lines, 4,087m total length	255m, 1 line	32 lines, 4,342m total length	2

Commented [140]: Marine Farming Association and Aquaculture New Zealand
ENV-2023-CHC-61

Commented [141]: WITHDRAWN:
Sanford Limited
ENV-2023-CHC-73
By memorandum dated 1 October 2024

Commented [142]: WITHDRAWN:
Sanford Limited
ENV-2023-CHC-73
By memorandum dated 1 October 2024

Commented [143]: WITHDRAWN:
Sanford Limited
ENV-2023-CHC-73
By memorandum dated 1 October 2024

Commented [144]: WITHDRAWN:
Sanford Limited
ENV-2023-CHC-73
By memorandum dated 1 October 2024

Commented [145]: RESOLVED:
KPF Investments Limited and United Fisheries Limited
ENV-2023-CHC-59
By consent order dated 30 May 2024

Map 1



Map 2

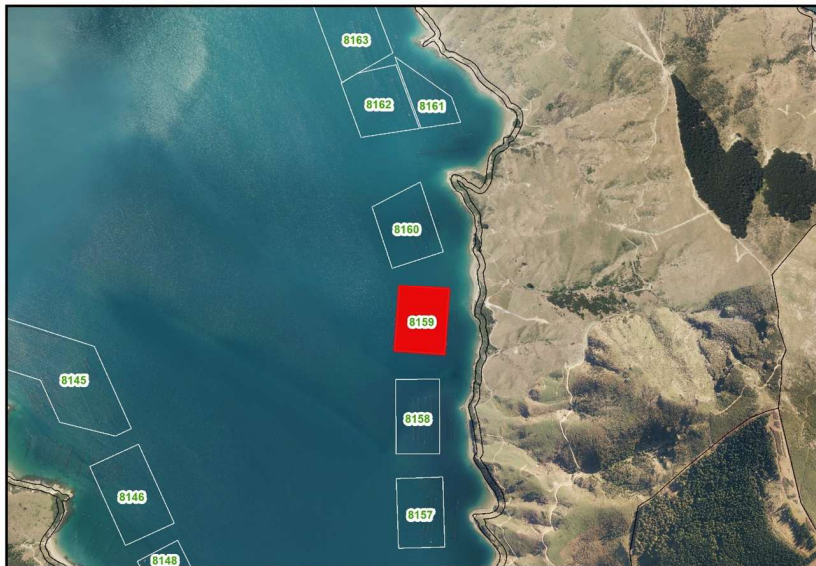


Inappropriate Marine Farm		Relocation AMAs(s)					
Marine Farm	Current Consented Lines and Total Length	AMA Relocated To (from Aquaculture Management Areas Overlay)	CMU	Current Consented Lines and Total Length	Additional Lines and Total Length	Aggregate Lines and Total Length	Map No.
MF 8146	20 lines, 2,000m total length	8146	Anakoha	20 lines, 2,000m total length	0m	10 lines, 2,000m total length	Map 3

Commented [146]: Robert & Simon Pooley
ENV-2023-CHC-69

Map 3

<u>Inappropriate Marine Farm</u>		<u>Relocation AMAs(s)</u>					<u>Map No.</u>	
<u>Marine Farm</u>	<u>Current Consented Lines and Total Length</u>	<u>AMA Relocated To (from Aquaculture Management Areas Overlay)</u>	<u>CMU</u>	<u>Current Consented Lines and Total Length</u>	<u>Additional Lines and Total Length</u>	<u>Aggregate Lines and Total Length</u>		
<u>MF 8147</u>	<u>13 lines, 1,300m total length</u>	<u>8157</u>	<u>Anakoha</u>	<u>13 lines, 1,300m total length</u>	<u>170m</u>	<u>13 lines, 1,470m total length</u>	<u>4</u>	
		<u>8159</u>	<u>Anakoha</u>	<u>13 lines, 1,300m total length</u>	<u>124m</u>	<u>13 lines, 1,424m total length</u>	<u>5</u>	
		<u>8160</u>	<u>Anakoha</u>	<u>13 lines, 1,300m total length</u>	<u>400m</u>	<u>13 lines, 1,700m total length</u>	<u>6</u>	
		<u>8163</u>	<u>Anakoha</u>	<u>16 lines, 1,960m total length</u>	<u>606m, 4 lines</u>	<u>20 lines, 2,566m total length</u>	<u>7</u>	

[Map 4](#)[Map 5](#)

[Map 6](#)



[Map 7](#)



Inappropriate Marine Farm		Relocation AMAs(s)					
Marine Farm	Current Consented Lines and Total Length	AMA Relocated To (from Aquaculture Management Areas Overlay)	CMU	Current Consented Lines and Total Length	Additional Lines and Total Length	Aggregate Lines and Total Length	Map No.
MF 8161	5 lines, 698m total length	8161	Anakoha	12 lines, 1,732m total length	0	12 lines, 1,732m total length	8

Commented [147]: KPF Investments Limited and United Fisheries Limited
ENV-2023-CHC-59

Map 8



Schedule 4: Replacement space for MF8002

Inappropriate Marine Farm		Relocation AMAs(s)					Map No.
Marine Farm	Current Consented Lines and Total Length	AMA Relocated To (from Aquaculture Management Areas Overlay)	CMU	Current Consented Lines and Total Length	Additional Lines and Total Length	Aggregate Lines and Total Length	
MF 8002	22 lines, 2,750m total length.	8002	Catherine Cove	22 lines, 2,750m total length.	0	22 lines, 2,750m total length.	Map 1

Commented [148]: Marine Farming Association and Aquaculture New Zealand
ENV-2023-CHC-61

Commented [149]: WITHDRAWN:
Sanford Limited
ENV-2023-CHC-73
By memorandum dated 1 October 2024

Commented [150]: C. Elkington, T Elkington, S McCarthy, Talley's, Kapua, Aroma Ltd and Aroma Aquaculture Limited
ENV-2023-CHC-56

Map 1



Page 4: [1] Commented [52]

3/08/2023 1:02:00 pm

Clearwater Mussels Ltd

ENV-2023-CHC-63

Page 4: [2] Commented [53]

3/08/2023 12:45:00 pm

Talleys Group Limited

ENV-2023-CHC-52

Page 4: [3] Commented [54]

3/08/2023 11:34:00 am

WITHDRAWN:

Sanford Limited

ENV-2023-CHC-73

By memorandum dated 1 October 2024

Page 4: [4] Commented [55]

3/08/2023 12:46:00 pm

Talleys Group Limited

ENV-2023-CHC-52

Page 4: [5] Commented [56]

3/08/2023 12:47:00 pm

Talleys Group Limited

ENV-2023-CHC-52

Page 4: [6] Commented [57]

3/08/2023 3:23:00 pm

Aroma Aquaculture Limited

ENV-2023-CHC-50

Page 4: [7] Commented [58]

3/08/2023 12:48:00 pm

Talleys Group Limited

ENV-2023-CHC-52

Page 4: [8] Commented [59]

26/03/2025 3:53:00 pm

RESOLVED:

Clearwater Mussels Ltd

ENV-2023-CHC-63

By consent order dated 26 March 2025

Page 4: [9] Commented [60]

3/08/2023 11:35:00 am

WITHDRAWN:

Sanford Limited

ENV-2023-CHC-73

By memorandum dated 1 October 2024

Page 4: [10] Commented [61]

26/03/2025 3:55:00 pm

RESOLVED:

Clearwater Mussels Ltd

ENV-2023-CHC-63

By consent order dated 26 March 2025

Page 4: [11] Commented [62]

3/08/2023 3:31:00 pm

Aroma Aquaculture Limited

ENV-2023-CHC-50

Page 4: [12] Commented [63]

3/08/2023 11:47:00 am

WITHDRAWN:

Sanford Limited

ENV-2023-CHC-73

By memorandum dated 1 October 2024

Page 4: [13] Commented [64]

3/08/2023 11:35:00 am

WITHDRAWN:

Sanford Limited

ENV-2023-CHC-73

By memorandum dated 1 October 2024

Page 4: [14] Commented [65]

3/08/2023 1:04:00 pm

Clearwater Mussels Ltd

ENV-2023-CHC-63

Page 4: [15] Commented [66]

26/03/2025 3:59:00 pm

RESOLVED:

Clearwater Mussels Ltd

ENV-2023-CHC-63

By consent order dated 26 March 2025

Page 4: [16] Commented [67]

3/08/2023 3:41:00 pm

Aroma Aquaculture Limited

ENV-2023-CHC-50

Page 4: [17] Commented [68]

3/08/2023 1:17:00 pm

KPF Investments Limited and United Fisheries Limited

ENV-2023-CHC-59

Page 4: [18] Commented [69]

3/08/2023 1:15:00 pm

KPF Investments Limited and United Fisheries Limited

ENV-2023-CHC-59

Page 4: [19] Commented [70]

3/08/2023 12:59:00 pm

Clearwater Mussels Ltd

ENV-2023-CHC-63

Page 4: [20] Commented [71]

3/08/2023 12:10:00 pm

Talleys Group Limited

ENV-2023-CHC-52

Page 4: [21] Commented [72]

3/08/2023 3:19:00 pm

Aroma Aquaculture Limited

ENV-2023-CHC-50

Page 4: [22] Commented [73]

3/08/2023 3:19:00 pm

Aroma Aquaculture Limited

ENV-2023-CHC-50

Page 4: [23] Commented [74]

26/03/2025 4:07:00 pm

RESOLVED:

Aroma Aquaculture Limited

ENV-2023-CHC-50

By consent order dated 26 March 2025

Page 4: [24] Commented [75]

26/03/2025 4:09:00 pm

RESOLVED:

Talleys Group Limited

ENV-2023-CHC-52

By consent order dated 26 March 2025

Page 4: [25] Commented [76]

3/08/2023 3:20:00 pm

Aroma Aquaculture Limited

ENV-2023-CHC-50

Page 4: [26] Commented [77]

3/08/2023 11:20:00 am

WITHDRAWN:

Sanford Limited

ENV-2023-CHC-73

By memorandum dated 1 October 2024

RESOLVED:

Apex Marine Farm Limited

ENV-2023-CHC-49

Talleys Group Limited

ENV-2023-CHC-52

Ayakulik Limited

ENV-2023-CHC-76

By consent order dated 26 March 2025

RESOLVED:

Talleys Group Limited

ENV-2023-CHC-52

By consent order dated 26 March 2025

RESOLVED:

Aroma Aquaculture Limited

ENV-2023-CHC-50

By consent order dated 26 March 2025

WITHDRAWN:

Sanford Limited

ENV-2023-CHC-73

By memorandum dated 1 October 2024

RESOLVED:

Clearwater Mussels Ltd

ENV-2023-CHC-63

By consent order dated 26 March 2025