

**RESOURCE MANAGEMENT  
ACT 1991**

**Decisions on:**

**Plan Changes 08 & 55 Heritage  
Buildings, Places and Sites  
Update.**

**Plan Changes 17 & 56 Heritage  
Tree Update**

**Ref: M135-15-08  
M135-15-17  
W045-15-55  
W045-15-56**

**This document contains the decision of the  
Marlborough District Council on plan  
changes 08, 17, 55 & 56 to the Marlborough  
Sounds and Wairau/Awatere Resource  
Management Plan.**

**Included as part of this decision is the reasons  
and amended Schedule of Changes.**

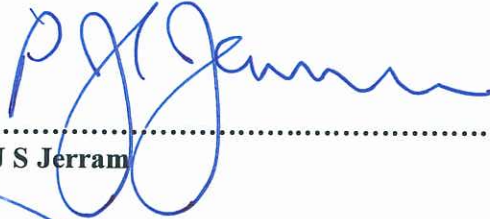
**DECISION DATE:**

*9 August 2010.*

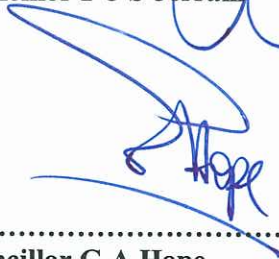
Decision made under delegation (Minute E.09/10.416) from the Marlborough District Council by Sub-Committee members:



.....  
Councillor C R Bowers (Chair)



.....  
Councillor P J S Jerram



.....  
Councillor G A Hope

Dated this *9<sup>th</sup>* day of *August* ..... 2010





**MDC Committee Decisions on Submissions for-**

Wairau/Awatere Resource Management Plan

**- Plan Change #55 Heritage Buildings, Places & Sites**

**- Plan Change #56 Heritage Tree Update**

And

Marlborough Sounds Resource Management Plan

**- Plan Change #08 Heritage Tree Update**

**- Plan Change #17 Heritage Buildings, Places & Sites**

## Introduction

On 10 December 2009, Plan Changes #55 and #56 to the Wairau/Awatere Resource Management Plan and Plan Changes #08 and #17 to the Marlborough Sounds Resource Management Plan were publicly notified. These Plan Changes were proposed to update the Register of Significant Heritage Resources relating to heritage trees, and for buildings, sites and places. The Register of Significant Heritage Resources (or the heritage schedule as it is otherwise referred), in conjunction with Plan rules, provides statutory protection for all the heritage resources listed on the schedule.

This report details the decisions on each of the submissions received on each of the Plan Changes. It also provides the Committee's reasons for accepting or rejecting these submissions and matters that the Committee have identified as arising from the submissions.

## Background to the Plan Changes

Part Two of the Resource Management Act 1991 (the Act) requires that the Committee, as people exercising functions and powers under the Act, recognise and provide for the protection of historic heritage from inappropriate subdivision, use and development. Marlborough's Resource Management Plans (collectively referred to as the Plans), further provide objectives and policies to promote the purpose of the Act, which provide additional guidance for decision makers. These provisions direct decision makers to, in appropriate cases, protect or preserve heritage resources including historic buildings, places and sites, waahi tapu, archaeological sites and areas, and heritage trees.

The existing heritage schedules contained within the Plans need to be updated from time to time to capture emerging heritage resources. The proposed Plan changes accordingly seek to update the heritage schedules.

The appendices of this report contain details of, and amendments to these Plan changes as a consequence of the Committee's decisions on submissions. The appendices are as follows:

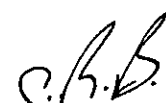
- Appendix A: Schedule of Changes for Heritage Trees to the WARMP (Plan Change #56)
- Appendix B: Schedule of Changes for Heritage Trees to the MSRMP (Plan Change #08)
- Appendix C: Schedule of Changes for Heritage Buildings, Places and Sites to the WARMP (Plan Change #55)
- Appendix D: Schedule of Changes for Heritage Buildings, Places and Sites to the MSRMP (Plan Change #17)
- Appendix E: Indicative Planning Maps to the WARMP
- Appendix F: Indicative Planning Maps to the MSRMP

## Hearing Process and Evidence Considered

A hearing of submissions was held before an appointed committee on the 3 May 2010. The submissions to Plan Changes #55 and #56 to the Wairau/Awatere Resource Management Plan and Plan Changes #08 and #17 to the Marlborough Sounds Resource Management Plan were heard by the Committee in unison. No further submissions were received on the Plan Changes.

The Committee consisted of three Councillors, consisting of Councillors Hope, Jerram and Bowers (Chair). The Committee was given delegated authority to make decisions on the submissions for the Plan Changes.

At the hearings, verbal evidence was given by the following submitters in support of their submissions:



- Te Runanga O Ngati Kuia, Raymond Smith on Plan Change # 17
- New Zealand Police, Derek Coffey on Plan Change # 08
- David Williamson on Plan Change # 08
- Peter Leslie on Plan Change # 56
- Simon Adams on Plan Change # 56
- Marilyn O'Donnell on Plan Change # 56
- Judy Hellstrom on Plan Change # 08

Written evidence was also tabled by Raymond Smith of Te Runanga o Ngati Kuia on the MSRMP Plan Change #17, and John and Judy Hellstrom of Endeavour Inlet, on the WARMP Plan Change #56.

The submissions received on the Plan Changes to update the Heritage Tree Register, primarily raised issues concerning the potential consequences of specific listings on landowners' private property rights. Concern was also expressed over the potential financial costs that would be experienced by landowners as a consequence of a decision to list a tree on the heritage schedule. A number of amendments and deletions from the heritage schedule and Planning Maps were also requested by submitters due to inaccuracies found within the heritage schedule and the associated Planning Maps. Submissions in general support of the Plan Changes were also received.

A total of three late submissions were received by the Council in response to the Plan Changes, from the following submitters:

- Marilyn and Kevin O'Donnell on Plan Change # 56
- Andrew Morgan on Plan Change # 56; and
- Peter and Barbara Rocco on Plan Change # 08

The Committee unanimously agreed to accept these late submissions for consideration. With regards to the Plan Changes to update the heritage schedule for buildings, sites and places, the submissions supporting the Plan Changes were very general in nature, with in contrast, the submissions in opposition being very specific. Ngati Kuia expressed concern over the potential listing of the additional argillite quarry sites, as they believed the listing of these sites could limit their contemporary rights to access the argillite resource. Concern was also expressed by Mike Radon of Arapawa Seafarms Limited, over the listing of the oil store associated with the leading lights, on the basis that this building was currently in private ownership and not a Council resource.

## **Matters Emerging from Decisions**

### ***Council Support***

The Committee acknowledges that while there are numerous benefits resulting from heritage protection, that the listing of a heritage tree, building, place or site on the heritage schedule has the potential to create additional fiscal responsibilities for landowners in terms of the management of heritage resources associated with resource consenting requirements. The listing of a resource on the heritage schedule also, to a certain extent, restricts owner's private property rights in relation to that resource. As expressed in a number of submissions considered by the Committee, many landowners feel that the Council should support landowners when passing heritage management responsibilities onto landowners. The Committee similarly believe that the opportunity to provide more active support for private heritage resource management should be investigated by the Council.

*C.R.B.*

In terms of current support available to landowners with heritage resources on their land, Marlborough Resource Management Plans provide that, as a method of Plan implementation, “incentives to promote the protection of scheduled resources, and non-scheduled items meeting some or all of the criteria for identifying heritage resources, will be investigated further and may include:

- Waiving resource consent application fees;
- Permitting alternative uses of buildings to encourage the retention of heritage features (scheduled heritage resources only);
- Consider waiving development contributions where property development incorporates the protection of a scheduled heritage resource (scheduled heritage resources only);
- Through the annual planning process, consider granting reductions in rating for properties where heritage resources are protected through either rules in this Plan or by a Heritage Order under the Resource Management Act;
- Consider providing development incentives to encourage the community, in particular the owners of heritage properties, to retain heritage resources; Heritage award programme (through the annual planning process)”.

### **Plan Change Scope**

As can be observed within the following decisions, the Committee have rejected a number of submissions on the basis that they are outside the scope of a Plan Change. In the case of the plan changes to update the Heritage Tree Register, the scope of the Plan Change is limited to the consideration of changes associated with trees proposed for inclusion within, or removal from the Plan Change at the time it was publicly notified on 10 December 2009. The Committee would like to note that the rejection of the submission should not be construed as an assessment of heritage merit of the tree. The submissions have been rejected as the Council does not have a mandate to undertake changes to a Plan if it was not included within the scope of the original Plan Change notified. The Committee notes that the details of any additional trees not included on the heritage schedule on this basis, will be retained and considered for inclusion within the Plan at the time of the next heritage schedule Plan Change update.

Finally, the Committee would like to call attention to the Rimu Tree nominated for inclusion within the Plan Change by John and Judy Hellstrom, located on land owned by the Department of Conservation in Furneaux (Howdens) Bush. This tree, which is estimated by the submitters to be over 1000 years old, was proposed for inclusion within the heritage schedule through the submissions process. While the Committee have come to recognise the significant historic heritage values associated with the tree, the Committee have rejected this submission on the basis it is beyond the scope of the Plan Change. Nevertheless, the Committee encourage the Council to engage in dialogue with the Department of Conservation to discuss the importance of the preservation of this tree, and consider the potential opportunities for joint participation in the protection of this tree. The Committee have also requested that staff liaise with Department of Conservation in order to formulate a schedule of outstanding examples of trees on Department of Conservation land. These trees will then be assessed to determine if they meet the criteria to be included in the next Heritage Schedule update.

## **Committee Decisions**

The following decisions address the principal issues raised within each of the submissions for each of the four Plan Changes. All of the decisions made by the Committee were unanimous, with the exception of a decision made on a submission lodged by Kevin and Marilyn O'Donnell on Plan Change #56, for which Clr. Jerram has requested that his vote against this decision be noted.

Further to the decisions below, in accordance with Clause 8D of the First Schedule of the Act; the Committee consider it appropriate to withdraw part of Plan Change #08 to the Marlborough Sounds Resource Management Plan, to remove Heritage Tree/Planning Map Notation #88 from the heritage schedule. The Committee have withdrawn this listing from the heritage schedule because, in this

instance, they do not consider the landowner to have been adequately notified. This tree will be reconsidered for its suitability for inclusion within the heritage schedule, at the time of the next heritage schedule update.

In reference to the following tables, where a decision contained below differs from the recommendations within the relevant section 42A Report, the Committee rationale for the decision is considered to meet the requirements of section 32(2) (a) of the Act.

**The Wairau/Awatere Resource Management Plan Heritage Tree Update – Plan Change 56**

Name	Planning Map Notation #	Submission Summary	Committee Decision
Robert Hutchinson (Reserves and Amenities Officer, MDC)	16, 18, 30, 31, 169, 170, 26, 28, 32, 102, 145, 146, 19, 171, 172, 79, 164, 139, 83, 77, 153, 154, 160, 161, 162, 163, 83,140, 141, 08, 87, 34, 37, 50	The submitter requests various amendments relevant to the Wairau/Awatere Resource Management Plan, to fix errors within the Heritage Schedule and associated Planning Maps. The amendments are proposed to improve the accuracy of the heritage schedule and associated Planning Maps.	<p><b>Accept –</b></p> <p>The Committee accepts this submission as the amendments are intended to improve the accuracy of the Heritage Schedule and the associated Planning Maps. The Committee further notes that in some cases, the scale of the finalised planning maps will not allow each heritage tree to be shown individually on a site, and therefore recognise that changes to the symbols used on these maps may be necessary during map reproduction to ensure the maps are clear and understandable to Plan users (see Appendix E for WARMP Planning Maps).</p> <p>The Committee believes these amendments will provide Plan users with greater certainty about the application of the Plans heritage tree provisions (refer to Appendix A for the Schedule of Changes for amendments).</p>
Peter Leslie Family Trust	41	The protection of the stand of London Plane trees is opposed because the trees shade the dwelling located on site and because the submitter was not made aware of the existence of the heritage trees on site at the time of purchasing his property.	<p><b>Reject –</b></p> <p>The Plan Change proposes to update the Planning Maps for Planning Map Notation (heritage tree) # 41, to insert the number seven beside the existing listing to clearly indicate that all seven of the trees are protected. The Committee rejects the submission in opposition to the listing as they believe that the trees, in their collective form, hold heritage significance to Marlborough as a result of their historic association with a public figure. Further, the Committee believe that the wider public community benefits gained as a result of tree protection, in this case, outweigh the amenity concerns of the submitter. The Committee support the amendment of the Planning Maps to clearly show the location of all seven trees (refer to</p>

*C.R.B.*



Appendix A for the Schedule of Changes for amendments).	
Trust Power Limited	<p><b>Reject –</b></p> <p>The Plan Change does not propose to protect any trees within the area to which the submission relates. The submission against the protection of any potential heritage trees within the area of Wairau Hydroelectric Power Scheme is therefore considered to be outside the scope of the publicly notified Plan Change.</p>
Richard & Simon Adams	<p><b>Accept in part –</b></p> <p>The Gum tree, being Planning Map Notation (Heritage Tree) #160, shall be included within the heritage schedule due to its historical significance for commemorating the succession of the Marlborough province from Nelson.</p> <p>The submission in opposition to the listing of the Oak Tree, being Planning Map Notation (Heritage Tree) #161, is rejected by the Committee and shall be included within the heritage schedule. While the Committee have considered the submission in opposition to this listing, they consider that the potential issues faced by the owners in terms of accessing their farm to be outweighed by the actual benefits associated with protecting this tree as a heritage resource. The Committee believe that the tree's historic significance is emphasised by its close proximity to the Langley Dale Homestead and its association with William Adams, the first Superintendent of Marlborough.</p> <p>Planning Map Notation (Heritage Tree) #162 (Horse Chestnut) no longer exists, and should therefore be removed from the Heritage Schedule.</p>
	<p>The submitter opposes the potential protection of trees within the area of Wairau Hydroelectric Power Scheme proposal.</p> <p>Heritage Tree #160 - The protection of this tree is supported by the property owners.</p> <p>Heritage Tree #161 – The protection of this tree is opposed by the submitter because it is located in, what is potentially, the sole access way leading to the eastern part of the submitters farm. The protection of this tree could therefore inhibit the efficient utilisation of their farm.</p> <p>Heritage Tree #162 – The submitter requests the removal of this tree from the Heritage Register as this tree is dead.</p> <p>Heritage Tree #163 – The submitter requests that this tree be removed from the Heritage Register, as it is in poor health, which has been confirmed by a professional arborist.</p>

C.H.B.

<p>Planning Map Notation (Heritage Tree) #163 (Sweet Chestnut) is currently in poor health, and is no longer worthy for heritage protection within the Plan.</p>			
<p><b>Accept</b> – Council’s Reserves and Amenities Officer Mr Hutchinson has confirmed that the amendments proposed by the submitter are correct. The Committee therefore accepts the submission, as they consider that the proposed amendments will improve the accuracy of the Heritage Schedule and the associated Planning Maps, which will in turn support the achievement of the environmental results anticipated by the Plan in the context of heritage (refer to Appendix A for the Schedule of Changes for amendments).</p>	<p>The submitter advises that Planning Map page 134 shows there are three Wellingtonias and three Tasmanian Blue Gums, but there are only two Wellingtonias and one Tasmanian Blue Gum. The associated Planning Maps therefore show the incorrect number of heritage trees being located on site.</p>	<p>153, 154</p>	<p>Francis Maher</p>
<p><b>Reject</b> – The Committee have considered the amenity concerns raised by the submitter, however have concluded that the wider public community benefits gained as a result of protecting the tree outweigh the concerns of the submitter. The Committee have reiterated that this tree, which is located on the Council Road Reserve, meets the criteria in the Plan for heritage tree protection as it stands to be over 100 years in age and therefore is an important tree specimen for the district.  It is noted that because the Cottonwood Poplar tree is located on the Council Road Reserve, all tree maintenance works will be at the expense of either the New Zealand Transport Agency or the Marlborough District Council.</p>	<p>The submitter advises that Heritage Tree #123 has negative effects on the amenity of their dwelling located at 17 High Street, Renwick, which is a result of shading and falling leaves from the tree. The submitter further advises that the tree blocks the majority of their winter sunlight, making their home damp and extremely difficult to heat.</p>	<p>123</p>	<p>Kevin and Marilyn O’Donnell</p>
<p><b>Reject</b> – The submitter opposes the protection of the</p>		<p>88, 89, 90,</p>	<p>Andrew Morgan</p>

C.R.B.

	91	<p>four trees on site, for the following reasons:</p> <ul style="list-style-type: none"> <li>- The financial costs associated with the Resource Consent process;</li> <li>- The trees listed are neither native, nor rare specimens of trees. Nor is the submitter aware of any history associated with the trees;</li> <li>- A report by David James Trees Services recognises that only three out of the four trees identified on site are suitable for inclusion within the Plan;</li> <li>- Concerns associated with the devaluing of the site as a result of the registration of the trees within the heritage schedule;</li> </ul> <p>The submitters wish to reserve the right to have control over their own property.</p>	<p>The Committee rejects the submission in opposition to the heritage listing and consider it appropriate to list the Pepper Tree, Silver Birch, Nooka Cypress and Copper Beech on the heritage schedule. This decision is made on the basis that trees are noteworthy historic tree specimens, which are considered to be suitable for protection within the Plan. It is also noted that these trees were previously protected by the Blenheim Borough Council under the past District Scheme.</p> <p>The Committee recognise that while the listing of these trees on the heritage schedule will create additional fiscal responsibilities for landowners, that the protection of historic heritage from inappropriate subdivision, use and development is considered to be a matter of national importance, which they, as decision makers, are required to recognise and provide under Part Two of the RMA 1991.</p>
--	----	---	--

*C.P.B.*

The Marlborough Sounds Resource Management Plan Heritage Tree Update – Plan Change #08

Name	Planning Map Notation #	Submission Summary	Decision
Robert Hutchinson (MDC)	90, 63, 74 76, 89, 90	The submitter requests various amendments relevant to the Marlborough Sounds Resource Management Plan, to fix errors within the heritage schedule and associated Planning Maps. The majority of the amendments requested are proposed to improve the Heritage Tree Register and associated Planning Maps.	<p><b>Accept in part -</b></p> <p>With the exception of the submission pertaining to Planning Map Notation (Heritage Tree #63), the submission is accepted by the Committee as they consider that the amendments proposed will provide Plan users with greater certainty about the application of the Plans heritage tree provisions (refer to Appendix B for the Schedule of Changes for amendments).</p> <p>The Committee also notes that as proposed, the scale of the Planning Maps will not practicality allow each heritage tree to be showed individually on a site, and recognise that changes to the symbols used on these maps may be necessary during map reproduction to ensure the maps are clear and understandable to Plan users.</p> <p>The removal of Planning Map Notation (Heritage Tree #63) has been rejected by the Committee, as it is considered to be outside the scope of the Plan Change because it was not notified in the Section 32 Report for Plan Change #08. An alternate process pursuant to Clause 20A of the RMA 1991 is recommended as being the appropriate means to remove the tree from the Heritage Register. This matter is referred to the environmental policy team for further action.</p>
Ally Gibbons	63	The submitters have identified there is no Kahikatea Tree located at Te Mara in Double Bay, and requested that listing #63 be deleted from the Heritage Schedule.	<p><b>Reject -</b></p> <p>The Committee accepts that there is no Kahikatea Tree located at Te Mara in Double Bay, however rejects the submission as the removal of this tree was not proposed within the publicly notified version of Plan Change #08. The submission to remove the tree is</p>

*C.B.B.*

			<p>consequently considered to be outside the scope of the Plan Change. An alternate process pursuant to Clause 20A of the RMA 1991 is recommended as being the appropriate means to remove the tree from the Heritage Register. This matter is referred to the environmental policy team for further action.</p>
Peter Bugler	89, 90	<p>The submitter advises that heritage tree/planning map notation (numbers 90A and 90B) are inaccurately shown as being depicted on Lot 2 DP 3209, instead of one Tulip tree and one Pin Oak tree being located on Lot 1 DP 3209.</p>	<p><b>Accept –</b> Amendments are required to correct the errors associated with Heritage Schedule and the associated Planning Maps with respect to 10 Newgate Street, Picton. This will improve the accuracy of the subject map and support the environmental results anticipated by the Plan in the context of heritage.</p>
Mark Baxter	85	<p>The submitter requests that Tree #85, located at 94 Wellington Street, be removed from the Heritage Schedule, advising the Council that it has been poisoned with the intent it be removed.</p>	<p><b>Accept –</b> Given the tree was poisoned prior to the notification of the Plan Change, at the time of poisoning the tree had no protection through the Plan. Since this time, the tree has been removed from the site and as a consequence, the Committee require removal of the tree from the Heritage Tree Register.</p>
B R and G C Smith	71, 72, 73	<p>The submitter requests that changes be made to map page 57/58 as the map for Heritage Tree #71 does not accurately reflect the tree's actual position, and therefore requires amendment. In addition, it is requested that the heritage schedule be amended to include a stand of 3 Rimu trees being protected at 8 Taranaki Street (ref. Heritage Tree #72).</p>	<p><b>Accept -</b> The Committee accepts the submission to amend the Heritage Schedule and associated planning map to correct the location of the Kauri Tree (Planning Map Notation #71), as this will improve the accuracy of the Planning Maps.  The Committee also considers it appropriate to amend the Heritage Schedule associated with Planning Map Notation #72, to illustrate there is in fact three Rimu trees protected on site. The publicly notified version of the Plan Change clearly identified one Rimu tree was located on site, with the correction to show three Rimu Trees located on site only requiring a number (3) being placed beside the</p>

			<p>listing as it was notified. As it will not create a new listing within the Heritage Schedule, the Committee believe this amendment to remain within the scope of the Plan Change.</p>
<p>NZ Police</p>	<p>56</p>	<p>This submission requests the deletion of the Scarlet Oak located at the Picton Police Station.</p>	<p><b>Reject –</b> Planning Map Notation (Heritage Tree #56) is currently protected within the Plan. The removal of this tree from the Heritage Schedule was not proposed within Plan Change #08. The submission to remove the tree is therefore considered to be outside the scope of the publicly notified Plan Change.</p>
<p>John and Judy Hellstrom</p>		<p>The submitter requests that an additional Rimu Tree be protected within the Heritage Schedule.</p>	<p><b>Reject –</b> Whilst the Committee believe that the Rimu Tree to be worthy for protection within the Plan as a Heritage Tree, the Committee consider the inclusion of the tree is outside the scope of the Plan Change as it was not included in the publicly notified Plan Change. The Committee do however recommend that this tree be included for consideration within the Plan at the time of the next Heritage Tree Register update.</p>
<p>Penelope Carl</p>	<p>89, 90</p>	<p>The submitter states that errors exist in the Heritage Tree Register and associated Planning maps for 10, 12 and 14 Newgate Street, Picton.</p>	<p><b>Accept in part –</b> The Committee accepts the submission with respect to undertaking amendments to the Heritage Schedule and associated maps to accurately depict heritage tree (planning map notation) #89 and #90, however the submission to protect any trees not included in the publicly notified version of Plan Change #08 is rejected by the Committee. Whilst the submitter seeks that a number of additional trees be protected at 9 Rutland Street, the inclusion of additional trees is beyond the scope of the Plan Change, as they were not included in the publicly notified version of the Plan Change. The Committee recommend that the existence of these additional trees be recorded, and reviewed at the time of the next Plan Change to update the</p>

C.R.B.

<p>David and Lynda Williamson</p>	<p>65</p>	<p>The submitter requests that Heritage Tree (Planning Map Notation) #65 be removed from the Heritage Register on the basis that the listing of the tree will create additional costs as a consequence of the need to secure a Resource Consent to undertake maintenance works to the tree.</p>	<p><b>Heritage Schedule.</b></p> <p><b>Reject –</b></p> <p>Pursuant to 41(C) RMA 1991, the Committee commissioned an arborist to report back to the Committee on the safety of the Kowhai tree (Planning Notation #65). A report was received by the Council on 19<sup>th</sup> May 2010, which confirms that Mr Lovejoy, Tree Team Manager, does not believe there to be an imminent risk that the tree will fail at this point in time.</p>
<p>Peter and Barbara Rocco</p>	<p>74, 76, 78.</p>	<p>In relation to Tree #74 and 76, there is a need for the heritage schedule to differentiate between the location of trees located on private property, and on adjoining land in public ownership.</p> <p>It is requested that Heritage Tree #78 be removed from the Heritage Schedule, as the Lancewood no longer exists.</p> <p>Submitter 12 further requests that the Miro Tree located on Taranaki Street road frontage be included within the Heritage Schedule.</p>	<p><b>Accept in part -</b></p> <p>The Committee considers that amendments to the Heritage Schedule and associated Planning Maps are necessary to correct the location of Heritage Tree #74 and #76, and to remove reference to Tree #78.</p> <p>The Committee consider that these amendments are necessary as they will improve the accuracy of the Heritage Schedule.</p> <p>The Committee however rejects the submission that the Miro Tree be listed on the heritage register, as it was not included in the publicly notified version of the Plan Change and is therefore outside of the scope of the notified Plan Change.</p>

**The Marlborough Sounds Resource Management Plan Heritage Buildings, Sites and Places Update – Plan Change #17**

Name	Planning Map Notation #	Submission Summary	Decision
Raymond Smith of Te Runanga o Ngati Kuia	56, 57, 58	<p>Ngati Kuia opposes the listing of the additional Pakohe (Argillite) quarry sites.</p> <p>Argillite is considered by the iwi to form a part of the Ngati Kuia's distinct tribal identity, being embedded in Ngati Kuia karakia, waiata, whakatauki korero putake. The iwi consider Pakohe to be taonga.</p> <p>Ngati Kuia is currently in the final stages of the Treaty of Waitangi settlement process and has identified within the cultural redress package that Pakohe, and associated activities, to be one of the most important taonga at this time.</p>	<p><b>Accept in part -</b></p> <p>The Committee acknowledge their responsibilities in accordance with Part Two of the Act, in that they, amongst other matters, have a responsibility as decision makers to recognise and provide for the relationship of Maori and their culture, and traditions with their ancestral lands and taonga (s6(e)), and to provide for the protection of historic heritage from inappropriate subdivision, use and development (s6(f)).</p> <p>While the Committee consider the Samson Bay argillite quarry area to be a valuable heritage resource that should be preserved for the benefit of the entire Marlborough community, they recognise that at the current time, the listing of the additional quarry sites on the heritage schedule has the potential to adversely impact Ngati Kuia's relationship with Pakahoe, being their taonga.</p> <p>On this basis, the Committee accept Mr Smith's submission not to proceed with listing the additional quarry sites. The decision is premised on the understanding that the historic heritage values of the area are not currently under threat from inappropriate subdivision, use or development. However, should this change in the future and the area become susceptible to subdivision, use or development that was inappropriate in nature, the Committee note that it may be appropriate to re-evaluate the need to provide protection to these</p>



			<p>areas through listing on the heritage schedule.</p> <p>The Committee note that this decision does not affect the two existing argillite quarry sites already listed on the heritage schedule (being Planning Map Notation #1 and #2), and accordingly consider the proposed amendments to update the existing Planning Maps related to the current listings to be appropriate.</p>
<p><b>Reject -</b></p> <p>Given that the Oil Store Structure complies with the Plan criteria for identification as heritage resource, the Committee believe it appropriate that the structure be listed as a heritage resource and rejects the submission against the listing. The Committee do not consider the fact that the structure is currently in private ownership to be an adequate reason for not protecting this structure.</p> <p>While the Committee acknowledges the applicant's request for the Council to purchase this structure back prior to protection, they note that private property acquisition is both outside the mandate of the Committee and beyond the scope of the Plan Change.</p> <p>It is noted that the potential matter of the Council purchasing this structure will be referred to appropriate staff for consideration.</p>	<p><b>Accept in Part -</b></p> <p>As the scheduling of the additional argillite quarry sites may potentially adversely impact the Ngati Kuia Iwi, and given the heritage values of the sites are not currently considered to be under threat from inappropriate subdivision, use or development, the Committee have</p>	<p><b>Reject -</b></p> <p>The registration of the Oil Store Structure is opposed. The submitter states that the building was purchased at the same time as the farm in 1993. The owners state that if Council wish to purchase the building from them, that they would not object. However, they do object to the registration of the structure within the Heritage Schedule whilst in their ownership.</p>	<p><b>Accept in Part -</b></p> <p>The submitter supports the addition of the two argillite quarry sites and the correct siting of quarry sites already protected through the Plan, on the planning maps.</p> <p>The submitter also supports the</p>
<p>Mike Radon of Arapawa Seafarms Limited</p>	<p>60</p>	<p>56, 57, 58, 60</p>	<p>Robin Cox</p>

		protection of the buildings that make up the Lead Light system to the Tory Channel.	decided not to proceed with listing the additional quarry sites and reject the submission in support of additional sites being protected through the Plan.  However, with regard to the component of the submission that supports the amendment to improve the accuracy of the existing planning maps for the argillite quarry sites already protected through the Plan, the submission is accepted.  The submission in support of the Tory Channel Lead Lights and the Oil Store building is also accepted by the Committee.
The New Zealand Historic Places Trust	56, 57, 58, 59, 60	The submitter requests that the Council adopts the Plan Change as notified, and supports the listing of the Oparapara Argillite quarries of the Plateau and West Pelorus Quarries, and the Tory Channel Lead Lights and Oil Store building.	<b>Accept in part --</b>  The Committee accepts this submission in part, and supports the listing of the Tory Channel Lead Lights and Oil Store building.  Due to the potential adverse effects that the listing of the additional Argillite quarry sites could have on the Ngati Kuia Iwi, the Committee reject the submission requesting the listing of the areas on the heritage schedule.

**The Wairau/Awatere Resource Management Plan Heritage Buildings, Sites and Places Update – Plan Change #55**

Name	Planning Map Notation #	Submission Summary	Decision
Robin Cox	2, 3, 4, 5, 6,	The submitter supports the amendments to the legal descriptions associated with the Leefield	<b>Accept in part --</b>

*C.R.B.*

	7, 8, 92	<p>heritage buildings.</p> <p>The submitter also supports the inclusion of the Pilot's House within the Heritage Schedule, believing the addition of the Pilot's House to the heritage schedule is a gain for the protection of heritage in Marlborough. The submitter advocates that the Wairau Bar must also be worth protecting as an historic precinct as it has so much value to both European and Maori.</p>	<p>The Committee accepts the submission in support of listing the Pilot's House on the heritage schedule as it is considered that the building is a valuable heritage resource for Marlborough. Further, in recognition of the building's significance, the Committee have assigned the listing to have a Class A Category 1 status on the Schedule. As a consequence, the demolition or removal of this building will be considered a prohibited activity.</p> <p>With respect to the Leefield Station amendments, the Committee believe, that in this instance, it is appropriate to withdraw this component of the Plan Change as the landowners were not notified in accordance with the First Schedule of the Act. On this basis, the submission to update the Leefield Station listings is rejected by the Committee. However, given the Committee believe these amendments to be both minor, and necessary in nature, it is recommended that a separate RMA process be initiated to update the legal descriptions pursuant to Clause 20A (First Schedule) of the Act. This matter is referred to the environmental policy team for further action.</p>
The New Zealand Historic Places Trust	2, 3, 4, 5, 6, 7, 8, 92	<p>The submitter requests that the Council adopts the Plan Change as notified and supports the listing of the Pilot's house.</p>	<p><b>Accept in part</b> –</p> <p>The Committee accepts this submission in part, and supports the listing of the Pilot's House as a heritage resource.</p> <p>Whilst not stated explicitly within this submission, but inferred by the submitters request 'to adopt the Plan Change as notified', the Committee reject any submission to update the Leefield Station listings as the landowners were not notified in accordance with the First Schedule of the Act. However, given the Committee believe these amendments to be both minor, and necessary in nature, it is recommended that a separate RMA process be initiated to update the legal descriptions pursuant to Clause 20A (First Schedule) of the Act.</p>

*C.R.B.*

# **Appendix A:**

## **Volume 2: Appendix A – Plan Change #56 Wairau/Awatere Resource Management Plan:**

## APPENDIX A

### Volume 2: Appendix A – Plan Change #56 Wairau/Awatere Resource Management Plan:

The changes identified below reflect the Committee's decision on Plan Change #56. Where text is proposed to be added to the Plan, it has been shown as underlined. Where text is to be deleted from the Plan it has been shown with a line through it. Where text is shown in the following schedule without any underlining or strikethrough, it is existing text from the Plan and has been included for context and to assist the reader in determining where the changes occur, and does not form part of the plan change.

#### Heritage Trees

*Note: Where multiple trees of the same species are located on the same allotment, they are annotated using alphabetical numbering on the corresponding Planning Map*

Planning Map Notation	Name	Location	Common Name	RNZIH Registration Number
1.	Eucalyptus obliqua	'Hawkesbury Vineyard', Hawkesbury Road, Renwick	Messmate gum	<u>189</u>
2.	<del>Araucaria bodwillii</del>	<del>'Sandhills', Main Blenheim/Picton Highway</del>	<del>Bunya bunya</del>	
3.	Abies nordammiana (see also 165)	'Seven Oaks', <u>106</u> <u>Brookby Road</u> , Hawkesbury near Renwick	Caucasian fir	<u>129</u>
4.	Picea smithiana	'Seven Oaks', <u>106</u> <u>Brookby Road</u> , Hawkesbury near Renwick	Himalayan spruce	<u>130</u>
5.	<del>Picea abies</del>	<del>'Seven Oaks', <u>Brookby</u> <u>Road</u>, Hawkesbury near Renwick</del>	<del>Norway spruce</del>	<del><u>131</u></del>
6.	Pseudotsuga menziesii	'Seven Oaks', <u>106</u> <u>Brookby Road</u> , Hawkesbury near Renwick	Douglas fir	<u>132</u>
7.	Cedrus deodara	'Seven Oaks', <u>106</u> <u>Brookby Road</u> , Hawkesbury near Renwick	Deodar	<u>133</u>
8.	Ulmus procera (see also 166-167)	108 Maxwell Road, Blenheim	Elm	<u>024a</u>
9.	Sequoiadendron giganteum	108 Maxwell Road, Blenheim	Wellingtonia	<u>024b</u>
10.	Aesculus hippocastanum	108 Maxwell Road, Blenheim	Horse chestnut	<u>024c</u>

11.	<i>Magnolia grandiflora</i>	108 Maxwell Road, Blenheim	Evergreen magnolia	<u>024d</u>
12.	<i>Tilia x europaea</i>	108 Maxwell Road, Blenheim	Lime (6)	<u>024e</u>
13.	<i>Sequoiadendron giganteum</i>	16 Bank Street, Blenheim	Wellingtonia (2)	<u>175</u>
14.	<i>Sequoia sempervirens</i>	19 Purkiss Street, Blenheim	Redwood	<u>174</u>
15.	<i>Liquidamba styraciflua</i>	22 Weld Street, Blenheim	Sweet gum	<u>293a</u>
16.	<i>Quercus robur</i>	22 Weld Street, Blenheim	Oak (4)	<u>293b</u>
17.	<i>Quercus rubra</i>	22 Weld Street, Blenheim	Red oak	<u>293c</u>
18.	<i>Juglans regia</i>	22 Weld Street, Blenheim	Walnut (4)	<u>293d</u>
19.	<i>Sequoiadendron giganteum</i>	25 Percy Street, Blenheim	Wellingtonia	<u>038</u>
20.	<i>Sequoiadendron giganteum</i>	70 Maxwell Road, Blenheim	Wellingtonia	<u>023a</u>
21.	<i>Cinnamomum camphora</i>	70 Maxwell Road, Blenheim	Camphor tree	<u>023b</u>
22.	<i>Ginkgo biloba</i>	70 Maxwell Road, Blenheim	Ginkgo	<u>023c</u>
23.	<i>Betula pendula</i>	70 Maxwell Road, Blenheim	Silver birch	<u>023d</u>
24.	<i>Tilia x europaea</i>	75 Litchfield Street, Blenheim	Lime	
25.	<i>Quercus rubra</i>	75 Litchfield Street, Blenheim	Red oak	
26.—	<i>Liquidamba styraciflua</i>	80 Nelson Street, Springlands, Blenheim	Sweet gum	
27.	<i>Schinus molle</i>	80 Nelson Street, Springlands, Blenheim	Pepper tree	<u>260b</u>
28.—	<i>Aesculus x carnea</i>	80 Nelson Street, Springlands, Blenheim	Red-horse chestnut	
29.	<i>Platanus x acerifolia</i>	80 Nelson Street, 40 Kingwell Drive, Springlands, Blenheim	London plan (2)	<u>260d</u>
30.	<i>Liriodendron tulipifera</i>	80 Nelson Street, 40 Kingwell Drive, Springlands, Blenheim	Tulip tree	<u>260e</u>
31.	<i>Quercus rubra</i>	80 Nelson Street, Springlands, Blenheim	Red oak	<u>260f</u>
32.—	<i>Acer campestre</i>	80 Nelson Street, Springlands, Blenheim	Field maple	
33.	<i>Tilia x europaea</i>	80A Nelson Street, Springlands, Blenheim	Lime	<u>259</u>

34.	Sequoia sempervirens (see also 169-170)	84 Nelson Street, Springlands, Blenheim	Redwood	<u>253a</u>
35.	Taxodium ascendens distichum	84 Nelson Street, Springlands, Blenheim	Pond Swamp cypress (2)	<u>253b</u>
36.	Ginkgo biloba	84 Nelson Street, Springlands, Blenheim	Maidenhair tree	<u>253c</u>
37.	Quercus robur (see also 171-172)	Bethsaida Home, Litchfield Street, Blenheim	Oak (2)	<u>182</u>
38.	Juglans regia	Blenheim School, 42 Alfred Street, Blenheim	Walnut	<u>292a</u>
39.	Acer pseudoplatanus	Blenheim School, 42 Alfred Street, Blenheim	Sycamore	<u>292b</u>
40.	Quercus robur	Blenheim School, 42 Alfred Street, Blenheim	Oak	<u>292c</u>
41.	Platanus x acerifolia	Blenheim/Picton State Highway 1	London plane (7)	<u>163</u>
42.	Eucalyptus viminalis	Burleigh Park, New Renwick Road, Blenheim	Manna gum	<u>177</u>
43.	Quercus robur	Church of the Nativity, Alfred Street, Blenheim	Oak	<u>203</u>
44.—	<del>Ulmus procera</del>	<del>Church of the Nativity, Alfred Street, Blenheim</del>	<del>Elm</del>	
45.	Sophora japonica	Cnr Budge and Shirliff Streets, Blenheim	Pagoda tree	<u>176</u>
46.	Cedrus deodara	Eltham Road Reserve, Blenheim	Deodar	<u>035a</u>
47.	Sequoia sempervirens	Eltham Road Reserve, Blenheim	Redwood	<u>035b</u>
48.	Liriodendron tulipifera	Eltham Road Reserve, Blenheim	Tulip tree	<u>035c</u>
49.	Palatanus x acerifolia	Eltham Road Reserve, Blenheim	London plane	<u>035d</u>
50.	Eucalyptus viminalis (see also 173-176)	<del>Fairhall Homestead, Woodbourne, Blenheim</del> <u>The Woodbourne Homestead, Fairhall, Blenheim</u>	Manna gum	<u>188</u>
51.	Quercus robur	<del>Fairhall Homestead, Woodbourne, Blenheim</del> <u>The Woodbourne Homestead, Fairhall, Blenheim</u>	Oak	<u>190</u>
52.	Nestegis lanceolata	Freeths Road, Koromiko	White maire (59)	<u>273a</u>

53.	<i>Nothofagus solandri</i> var. 'Cliffortioides'	Freeths Road, Koromiko	Mountain beech (14)	<u>273b</u>
54.	<i>Podocarpus hallii</i> syn. <i>Cunninghamii</i>	Freeths Road, Koromiko	Hall's Totara (59)	<u>273c</u>
55.	<i>Quercus robur</i>	Hillersden Farm, Wairau Valley, R D 1, Marlborough	Oak	<u>274c</u>
56.	<i>Pseudotsuga menziesii</i>	Hillersden Farm, Wairau Valley, R D 1, Marlborough	Douglas fir (10)	<u>274g</u>
57.	<i>Tilia x europaea</i>	Hillersden Farm, Wairau Valley, R D 1, Marlborough	Lime (3)	<u>274a</u>
58.	<i>Aesculus hippocastanum</i>	Hillersden Farm, Wairau Valley, R D 1, Marlborough	Horse chestnut (2)	<u>274b</u>
59.	<i>Quercus petraea</i>	Hillersden Farm, Wairau Valley, R D 1, Marlborough	Sessile oak	<u>274d</u>
60.	<i>Quercus coccinea</i>	Hillersden Farm, Wairau Valley, R D 1, Marlborough	Scarlet oak	<u>274e</u>
61.	<i>Quercus rubra</i>	Hillersden Farm, Wairau Valley, R D 1, Marlborough	Oak	
62.	<i>Quercus petraea</i>	Hillersden Farm, Wairau Valley, R D 1, Marlborough	Sessile oak	
63.	<i>Quercus coccinea</i>	Hillersden Farm, Wairau Valley, R D 1, Marlborough	Scarlet oak	
64.	<i>Quercus rubra</i>	Hillersden Farm, Wairau Valley, R D 1, Marlborough	Red oak	<u>274f</u>
65.	<i>Pseudotsuga menziesii</i>	Hillersden Farm, Wairau Valley, R D 1, Marlborough	Douglas fir	<u>252</u>
66.	<i>Sequoiadendron giganteum</i>	Hillersden Farm, Wairau Valley, R D 1, Marlborough	Wellingtonia (10)	<u>274h</u>
67.	<i>Cedrus atlantica</i>	Hillersden Farm, Wairau Valley, R D 1, Marlborough	Atlas cedar	<u>274j</u>
68.	<i>Chamaecyparis nootkatensis</i>	Hillersden Farm, Wairau Valley, RD 1, Marlborough	Nootka cypress	<u>274k</u>



69.	<i>Abies pinsapo</i> (see also 180)	Lake Timara near Renwick	Spanish fir	<u>128a</u>
70.	<i>Catalpa bignonioides</i>	Lake Timara near Renwick	Indian bean tree	<u>128b</u>
71.	<i>Washingtonia filifera</i>	Lake Timara near Renwick	Californian fan palm	<u>128c</u>
72.	<i>Ulmus carpinifolia</i> 'Webbiana' (see also 177-179)	Nelson Polytechnic Campus, Budge Street, Blenheim	Smooth leaved elm	<u>254a</u>
73.	<i>Prunus cerasifera</i> var 'Atropurpurea'	Nelson Polytechnic Campus, Budge Street, Blenheim	Cherry plum	<u>254b</u>
74.	<i>Castanea sativa</i>	Nelson Polytechnic Campus, Budge Street, Blenheim	Sweet chestnut	<u>254c</u>
75.	<i>Juglans regia</i>	Nelson Polytechnic Campus, Budge Street, Blenheim	Walnut (7))	<u>254d</u>
76.—	<del><i>Castanea sativa</i></del>	<del>Okaramio, R-D 1, Havelock</del>	<del>Sweet chestnut</del>	
77.	<i>Araucaria bidwillii</i> (see also 181)	Spring Creek Holiday Park, Rapaura Road	Bunya bunya	<u>197</u>
78.	<i>Magnolia grandiflora</i>	Spring Creek Holiday Park, Rapaura Road	Southern magnolia	<u>198</u>
79.	<i>Alectryon excelsus</i>	Wairau Incident Reserve, State Highway 1	Titoki	<u>135</u>
80.	<i>Tilia x europaea</i>	Whitney Street School Grounds, Blenheim	Lime (5)	<u>134a</u>
81.	<i>Pseudotsuga menziesii</i>	Whitney Street School Grounds, Blenheim	Douglas fir	<u>134b</u>
82.	<i>Sequoia sempervirens</i>	Whitney Street School Grounds, Blenheim	Redwood (4)	<u>134c</u>
83.	<i>Agathis australis</i>	82A Lakings Road, Blenheim	Kauri	
84.	<u><i>Taxus baccata</i></u>	<u>80 Maxwell Road, Blenheim</u>	<u>English yew</u>	
85.	<u><i>Eucalyptus ficifolia</i></u>	<u>Cnr of Thompson Ford and Old Renwick Roads</u>	<u>Scarlet gum</u>	
86.	<u><i>Eucalyptus viminalis</i></u>	<u>Burleigh Park, Blenheim</u>	<u>Manna gum</u>	
87.	<u><i>Sequoia sempervirens</i></u>	<u>Burleigh Park, Blenheim</u>	<u>Redwood</u>	
88.	<u><i>Fagus sylvatica</i></u>	<u>32 Weld Street, Blenheim</u>	<u>Copper beech</u>	
89.	<u><i>Schinus molle</i></u>	<u>32 Weld Street, Blenheim</u>	<u>Pepper tree</u>	

90.	<u>Betula pendula</u>	<u>32 Weld Street, Blenheim</u>	<u>Silver birch</u>
91.	<u>Chamaecyparis nootkaensis</u>	<u>32 Weld Street, Blenheim</u>	<u>Nootka cypress</u>
92.	<u>Eucalyptus leucoxydon rosea.</u>	<u>Road Reserve 186 Redwood Street, Blenheim</u>	<u>Pink flowering gum (6)</u>
93.	<u>Eucalyptus viminalis</u>	<u>Road Reserve 188 Redwood Street, Blenheim</u>	<u>Manna gum</u>
94.	<u>Eucalyptus viminalis</u>	<u>Road Reserve 190 Redwood Street, Blenheim</u>	<u>Manna gum (2)</u>
95.	<u>Eucalyptus viminalis</u>	<u>Road Reserve 200 Redwood Street, Blenheim</u>	<u>Manna gum</u>
96.	<u>Eucalyptus leucoxydon rosea.</u>	<u>Road Reserve 124 Wither Road, Blenheim</u>	<u>Pink flowering gum (2)</u>
97.	<u>Eucalyptus viminalis</u>	<u>Road Reserve 136 Wither Road, Blenheim</u>	<u>Manna gum</u>
98.	<u>Eucalyptus leucoxydon rosea.</u>	<u>Road Reserve 138 Wither Road, Blenheim</u>	<u>Pink flowering gum (1)</u>
99.	<u>Eucalyptus leucoxydon rosea.</u>	<u>Road Reserve 140 Wither Road, Blenheim</u>	<u>Pink flowering gum (3)</u>
100.	<u>Eucalyptus leucoxydon rosea.</u>	<u>Road Reserve 142 Wither Road, Blenheim</u>	<u>Pink flowering gum (3)</u>
101.	<u>Quercus palustris</u>	<u>Seymour Square, Blenheim</u>	<u>Pin oak</u>
102.	<u>Eucalyptus viminalis</u>	<u>Morrington Reserve, Blenheim</u>	<u>Manna gum (13)</u>
103.	<u>Juglans regia</u>	<u>Ching Park, Blenheim</u>	<u>Walnut (4)</u>
104.	<u>Eucalyptus globulus</u>	<u>17 Nursery Lane, Seddon</u>	<u>Blue gum</u>
105.	<u>Norus nigra</u>	<u>52 Percy Street, Blenheim</u>	<u>Mulberry</u>
106.	<u>Pseudopanax lessonii hybrid</u>	<u>52 Percy Street, Blenheim</u>	
107.	<u>Prumnopitys ferruginea</u>	<u>52 Percy Street, Blenheim</u>	<u>Miro</u>
108.	<u>Sophora prostrata</u>	<u>52 Percy Street, Blenheim</u>	<u>Prostrat kowhai</u>
109.	<u>Podocarpus totara</u>	<u>52 Percy Street, Blenheim</u>	<u>Totara</u>
110.	<u>Cordyline australis</u>	<u>52 Percy Street, Blenheim</u>	<u>Cabbage tree</u>
111.	<u>Phyllocladus trichomanoides</u>	<u>52 Percy Street, Blenheim</u>	<u>Celery pine</u>
112.	<u>Pseudopanax ferox</u>	<u>52 Percy Street, Blenheim</u>	<u>Fierce lancewood</u>
113.	<u>Sophora microphylla</u>	<u>52 Percy Street, Blenheim</u>	<u>Kowhai (2)</u>

<u>114.</u>	<u>Nothofagus solandri var cliffortioides</u>	<u>52 Percy Street, Blenheim</u>	<u>Mountain beech</u>	
<u>115.</u>	<u>Dacrydium cupressinum</u>	<u>52 Percy Street, Blenheim</u>	<u>Rimu (2)</u>	
<u>116.</u>	<u>Dacrycarpus dacrydioides</u>	<u>52 Percy Street, Blenheim</u>	<u>Kahikatea (3)</u>	
<u>117.</u>	<u>Nothofagus fusca</u>	<u>52 Percy Street, Blenheim</u>	<u>Red beech (2)</u>	
<u>118.</u>	<u>Podocarpus nivalis</u>	<u>52 Percy Street, Blenheim</u>	<u>Snow totara</u>	
<u>119.</u>	<u>Prumnopitys taxifolia</u>	<u>52 Percy Street, Blenheim</u>	<u>Matai</u>	
<u>120.</u>	<u>Nothofagus solandri</u>	<u>52 Percy Street, Blenheim</u>	<u>Black beech</u>	
<u>121.</u>	<u>Olearia paniculata</u>	<u>52 Percy Street, Blenheim</u>	<u>Akiraho</u>	
<u>122.</u>	<u>Podocarpus totara</u>	<u>5 Camerons Road, Okaramio, RD1, Havelock</u>	<u>Totara (2)</u>	
<u>123.</u>	<u>Poplar deltoids</u>	<u>Road Reserve High Street, Renwick</u>	<u>Cottonwood poplar</u>	
<u>124.</u>	<u>Sequoiadendron giganteum</u>	<u>Lansdowne, 2641 Wairau Valley, RD1, Blenheim</u>	<u>Wellingtonia (2)</u>	
<u>125.</u>	<u>Sequoia sempervirens</u>	<u>Lansdowne, 2641 Wairau Valley, RD1, Blenheim</u>	<u>Redwood</u>	
<u>126.</u>	<u>Cedrus deodara</u>	<u>Lansdowne, 2641 Wairau Valley, RD1, Blenheim</u>	<u>Himalayan cedar</u>	
<u>127.</u>	<u>Eucalyptus ficifolia</u>	<u>Tua Marina Cemetery Hill</u>	<u>Scarlet gum</u>	
<u>128.</u>	<u>Juglans regia</u>	<u>McKendry Park, Orchard Lane, Blenheim</u>	<u>Walnut (28)</u>	
<u>129.</u>	<u>Juglans regia franquette</u>	<u>McKendry Park, Orchard Lane, Blenheim</u>	<u>Walnut (5)</u>	
<u>130.</u>	<u>Fagus sylvatica</u>	<u>2A Poynter Street, Blenheim</u>	<u>Copper Beech</u>	
<u>131.</u>	<u>Eucalyptus ficifolia</u>	<u>36A Mowat Street, Blenheim</u>	<u>Scarlet gum</u>	
<u>132.</u>	<u>Quercus robur</u>	<u>Marlborough Boys College</u>	<u>Oak (3)</u>	<u>339, 340, 342</u>
<u>133.</u>	<u>Fagus sylvatica purpureum</u>	<u>Marlborough Boys College</u>	<u>Copper beech</u>	<u>341</u>
<u>134.</u>	<u>Aesculus hippocastanum</u>	<u>Marlborough Boys College</u>	<u>Horse chestnut</u>	<u>343</u>
<u>135.</u>	<u>Podocarpus totara</u>	<u>Marlborough Boys College</u>	<u>Totara</u>	
<u>136.</u>	<u>Sophora sp</u>	<u>Marlborough Boys College</u>	<u>Kowhai</u>	
<u>137.</u>	<u>Elaeocarpus hookerianus</u>	<u>Marlborough Boys College</u>	<u>Pokaka</u>	
<u>138.</u>	<u>Cordyline Australia</u>	<u>Marlborough Boys College</u>	<u>Cabbage tree</u>	

<u>139.</u>	<u>Fagus sylvatica</u>	<u>Marlborough Boys College carpark, 20 Stephenson Street</u>	<u>Copper beech</u>	
<u>140.</u>	<u>Agathis australis</u>	<u>Marlborough Boys College</u>	<u>Kauri</u>	<u>344</u>
<u>141.</u>	<u>Dacrycarpus dacrydrioides</u>	<u>Marlborough Boys College</u>	<u>Kahikatea (2)</u>	
<u>142.</u>	<u>Eucalyptus viminalis</u>	<u>Sandhills, SH1</u>	<u>Gum</u>	
<u>143.</u>	<u>Quercus robur</u>	<u>81 Seymour Street, Blenheim</u>	<u>English oak</u>	
<u>144.</u>	<u>Quercus palustris</u>	<u>38 Beaver Road, Blenheim</u>	<u>Oak</u>	
<u>145.</u>	<u>Quercus robur</u>	<u>Road Reserve adjoining 42 Lakings Road, Blenheim</u>	<u>English oak</u>	
<u>146.</u>	<u>Chamaecyparis nootkaensis</u>	<u>Road Reserve adjoining 40 Lakings Road, Blenheim</u>	<u>Nootka cypress</u>	
<u>147.</u>	<u>Sequoidendron giganteum</u>	<u>Kinross Street carpark, Blenheim</u>	<u>Wellingtonia</u>	
<u>148.</u>	<u>Tilia europaea</u>	<u>16 Bank Street, Blenheim</u>	<u>Common lime</u>	
<u>149.</u>	<u>Quercus robur</u>	<u>5B Burden Street</u>	<u>English Oak</u>	<u>325</u>
<u>150.</u>	<u>Sequoiadendron giganteum</u>	<u>45 Houldsworth Street, Blenheim</u>	<u>Wellingtonia</u>	
<u>151.</u>	<u>Xcupressocyparis</u>	<u>43 Houldsworth Street, Blenheim</u>		
<u>152.</u>	<u>Xcupressocyparis</u>	<u>2 Park View Lane, Blenheim</u>		
<u>153.</u>	<u>Sequoiadendron giganteum</u>	<u>Spring Terrace, SH6</u>	<u>Wellingtonia (3) (2)</u>	<u>312b</u>
<u>154.</u>	<u>Eucalyptus globulus</u>	<u>Spring Terrace, SH6</u>	<u>Tasmanian blue gum (3)</u>	<u>312a</u>
<u>155.</u>	<u>Sequoiadendron giganteum</u>	<u>Livermere, 294 Middle Renwick Road, SH6</u>	<u>Wellingtonia</u>	
<u>156.</u>	<u>Cedrus deodara</u>	<u>Livermere, 294 Middle Renwick Road, SH6</u>	<u>Cedar</u>	
<u>157.</u>	<u>Pinus nigra (laricio)</u>	<u>Livermere, 294 Middle Renwick Road, SH6</u>	<u>Corsican pine</u>	
<u>158.</u>	<u>Sequoiadendron giganteum</u>	<u>Livermere, 294 Middle Renwick Road, SH6</u>	<u>Wellingtonia</u>	
<u>159.</u>	<u>Araucaria bidwillii</u>	<u>Livermere, 294 Middle Renwick Road, SH6</u>	<u>Bunya bunya</u>	
<u>160.</u>	<u>Eucalyptus globulus</u>	<u>Langley Dale, Northbank Road</u>	<u>Gum</u>	
<u>161.</u>	<u>Quercus robar</u>	<u>Langley Dale, Northbank Road</u>	<u>Oak</u>	
<u>162.</u>	<u>Aesculus hippocastanum</u>	<u>Langley Dale, Northbank Road</u>	<u>Horse-chestnut</u>	

<u>163.</u>	<u>Castanea sativa</u>	<u>Langley Dale, Northbank Road</u>	<u>Sweet chestnut</u>	
<u>164.</u>	<u>Cedrus atlantica</u>	<u>Roundabout, Nelson Street Road Reserve, Blenheim</u>	<u>Cedar</u>	
<u>165.</u>	<u>Abies pinsapo</u>	<u>'Seven Oaks', 106 Brookby Road, Hawkesbury near Renwick</u>	<u>Spanish fir</u>	
<u>166.</u>	<u>Michelia</u>	<u>108 Maxwell Road, Blenheim</u>	<u>Silver cloud</u>	
<u>167.</u>	<u>Fraxinus excelsior</u>	<u>108 Maxwell Road, Blenheim</u>	<u>Ash</u>	
<u>168.</u>	<u>Tilia x europea</u>	<u>16 Bank Street</u>	<u>Lime</u>	<u>175</u>
<u>169.</u>	<u>Agathis australis</u>	<u>84 Nelson Street, Springlands, Blenheim</u>	<u>Kauri</u>	
<u>170.</u>	<u>Aesculusx carnea</u>	<u>84 Nelson Street, Springlands, Blenheim</u>	<u>Red horse chestnut</u>	
<u>171.</u>	<u>Aesculus hippocastanum</u>	<u>Bethsaida Home, Litchfield Street, Blenheim</u>	<u>Horse chestnut</u>	
<u>172.</u>	<u>Magnolia grandiflora</u>	<u>Bethsaida Home, Litchfield Street, Blenheim</u>	<u>Magnolia</u>	
<u>173.</u>	<u>Taxus bacata fastigata</u>	<u>The Woodbourne Homestead, Fairhall, Blenheim</u>	<u>Irish yew</u>	
<u>174.</u>	<u>Quercus robar</u>	<u>The Woodbourne Homestead, Fairhall, Blenheim</u>	<u>English oak</u>	
<u>175.</u>	<u>Ilex aquifolium</u>	<u>The Woodbourne Homestead, Fairhall, Blenheim</u>	<u>Common holly</u>	
<u>176.</u>	<u>Populus deltoides</u>	<u>The Woodbourne Homestead, Fairhall, Blenheim</u>	<u>Poplar</u>	
<u>177.</u>	<u>Ginkgo biloba</u>	<u>Nelson Polytechnic Campus, Budge Street, Blenheim</u>	<u>Ginkgo</u>	
<u>178.</u>	<u>Liquidambar styraciflua</u>	<u>Nelson Polytechnic Campus, Budge Street, Blenheim</u>	<u>Liquidamber</u>	
<u>179.</u>	<u>Betula pendula</u>	<u>Nelson Polytechnic Campus, Budge Street, Blenheim</u>	<u>Silver birch (5)</u>	
<u>180.</u>	<u>Populus yunnanensis</u>	<u>Lake Timara near Renwick</u>	<u>Poplar</u>	
<u>181.</u>	<u>Cedrus deodara</u>	<u>Spring Creek Holiday Park, Rapaura Road</u>	<u>Himalayan cedar</u>	<u>196</u>

## **Appendix B:**

### **MSRMP Schedule of Proposed Plan Changes**

#### **Volume 2: Appendix A – Plan Change #08 Marlborough Sounds Resource Management Plan:**

## APPENDIX B

### MSRMP Schedule of Proposed Plan Changes

#### Volume 2: Appendix A – Plan Change #08 Marlborough Sounds Resource Management Plan:

The changes identified below reflect the Committee's decision on Plan Change #08. Where text is proposed to be added to the Plan, it has been shown as underlined. Where text is to be deleted from the Plan it has been shown with a line through it. Where text is shown in the following schedule without any underlining or strikethrough, it is existing text from the Plan and has been included for context and to assist the reader in determining where the changes occur, and does not form part of the plan change.

#### Heritage Trees

*Note: Where multiple trees of the same species are located on the same allotment, they are annotated using alphabetical numbering on the corresponding Planning Map.*

Planning Map Notation	Name	Location	Common Name	RNZIH Registration Number
53.	Quercus robur	22 Broadway Picton Lot 1 DP 3000	English oak	<u>251</u>
54.	Quercus coccinea	35 South Terrace, Picton Lot 2 DP 2074	Scarlet oak	<u>187</u>
55.	Quercus <del>robur</del> rubra	Cnr Kent and Buller Streets Sec 627 Town of Picton SO 2890 & Road Reserve	Red oak	<u>181</u>
56.	Quercus coccinea	Picton Police Station, Broadway, Picton Lots 3 & 4 DP 1820, Lots 1 & 3 DP 8811	Scarlet oak	<u>186</u>
57.	Sequoiadendron giganteum	Nelson Square, Picton Road Reserve	Wellingtonia (2)	<u>171, 172</u>
58.	Podocarpus totara	Picton School Grounds, 5 Buller St, Picton Sec 637 Town of Picton and Road Reserve	Totara	<u>179</u>
59.	Kunzea ericoides	29A Ranui Street, Picton lot 17 DP 4646	Kanuka	<u>195</u>
60.	Quercus robur	1 Sussex Street, Picton Pt Lot 2 DP 1855	English oak	<u>313</u>
61.	Juglans regia	Rev Samuel Ironside Memorial, Ngakuta Bay	Walnut	<u>269</u>
62.	Metrosideros excelsa	Oyster Bay Farm, Port Underwood Lot 7 DP 8632	Pohutukawa	<u>272</u>

63.	<u>Dacrycarpus dacrydioides</u>	<u>Te Mara, Double Bay, Kenepuru</u>	<u>Kahikatea</u>	
64.—	<u>Sequoiadendron giganteum</u>	<u>348 Waikawa Road, Picton Lot 3 DP 1228</u>	<u>Wellingtonia</u>	
65.	<u>Sophora microphylla</u>	<u>27 Devon Street, Picton Sec 645 Town of Picton</u>	<u>Kowhai</u>	
66.	<u>Sophora microphylla</u>	<u>11 Nelson Square, Picton Sec 696 Town of Picton</u>	<u>Kowhai</u>	
67.	<u>Quercus coccinea</u>	<u>Picton Foreshore Reserve</u>	<u>Scarlet Oak (2)</u>	
68.	<u>Dacrycarpus dacrydioides</u>	<u>McKormicks Road, Whatamango Bay</u>	<u>Kahikatea</u>	
69.	<u>Quercus robur</u>	<u>Waikawa Road, Waikawa Bay</u>	<u>English Oak</u>	
70.	<u>Eucalyptus sp.</u>	<u>Hampden Street, Picton</u>	<u>Gum</u>	
71.	<u>Agathis australis</u>	<u>8 Taranaki Street, Picton Lot 2 DP 1126</u>	<u>Kauri</u>	
72.	<u>Dacrydium cupressinum</u>	<u>8 Taranaki Street, Picton Lot 2 DP 1126</u>	<u>Rimu (3)</u>	
73.	<u>Podocarpus totara</u>	<u>8 Taranaki Street, Picton Lot 2 DP 1126</u>	<u>Totara</u>	
74.	<u>Nothofagus</u>	<u>Road reserve adjoining 11 Broadway, Picton Lot 3 DP 1126</u>	<u>Beech (2)</u>	
75.	<u>Kunzea ericoides</u>	<u>11 Broadway, Picton Lot 3 DP 1126</u>	<u>Kanuka</u>	
76.	<u>Pittosporum eugenoides</u>	<u>Road reserve adjoining 11 Broadway, Picton Lot 3 DP 1126</u>	<u>Lemonwood</u>	
77.	<u>Dacrydium cupressinum</u>	<u>11 Broadway, Picton Lot 3 DP 1126</u>	<u>Rimu</u>	
78.—	<u>Psuedopanax erassifolium</u>	<u>11 Broadway, Picton Lot 3 DP 1126</u>	<u>Lancewood</u>	
79.	<u>Nothofagus solandri var 'Cliffortioides'</u>	<u>53 Waikawa Road, Picton Lot 1 DP 8717</u>	<u>Mountain Beech</u>	
80.	<u>Quercus cerris</u>	<u>38 York Street, Picton Lot 1 DP 3783</u>	<u>Turkey oak</u>	<u>180</u>
81.	<u>Fraxinus excelsior</u>	<u>38 York Street, Picton Lot 1 DP 3783</u>	<u>Common Ash</u>	
82.	<u>Ulmus minor Louis van Houtte</u>	<u>38 York Street, Picton Lot 1 DP 3783</u>	<u>Golden Elm</u>	
83.	<u>Kowhai</u>	<u>38 York Street, Picton Lot 1 DP 3783</u>	<u>Kowhai</u>	
84.	<u>Fraxinus raywoodii</u>	<u>38 York Street, Picton Lot 1 DP 3783</u>	<u>Claret Ash</u>	<u>175</u>



85.—	<u>Nothofagus menziesii</u>	<u>94 Wellington Street, Picton Lot 2 DP 801</u>	<u>Silver beech</u>
86.	<u>Magnolia grandiflora</u>	<u>123 Wellington Street, Picton Sec 308 Town of Picton</u>	<u>Evergreen magnolia</u>
87.	<u>Betula pendula</u>	<u>34 Broadway Picton Lot 2 DP 8811</u>	<u>Silver birch</u>
88.—	<u>Podocarpus totara</u>	<u>Fifth Bank Wellington Street, Picton</u>	<u>Totara</u>
89.	<u>Quercus palustris</u>	<u>10 Newgate Street, Picton Lot 1 DP 3209</u>	<u>Pin oak</u>
90.	<u>Liriodendron tulipifera</u>	<u>10 Newgate Street, Picton Lot 1 DP 3209</u>	<u>Tulip tree (2)</u>

C.R.B.

## **Appendix C:**

### **Plan Change Wairau/Awatere Resource Management Plan**

### **Volume 2: Appendix A – Plan Change #55 Wairau/Awatere Resource Management Plan:**

**Appendix C – Plan Change Wairau/Awatere Resource Management Plan**

Volume 2: Appendix A – Plan Change #55 Wairau/Awatere Resource Management Plan:

The changes identified below reflect the Committee’s decision on Plan Change #55. Where text is proposed to be added to the Plan, it has been shown as underlined. Where text is to be deleted from the Plan it has been shown with a line through it. Where text is shown in the following schedule without any underlining or strikethrough, it is existing text from the Plan and has been included for context and to assist the reader in determining where the changes occur, and does not form part of the plan change.

**Class A Historic Buildings, Places and Sites**

<b>Planning Map Notation</b>	<b>Location</b>	<b>Name</b>	<b>Legal Description</b>	<b>Class/Category</b>
1.		Moa Hunter Site	Pt Marlborough Board endowment, Blk I, Clifford Bay SD	A/1
2.	Waihopai Valley	Leefield Station Shearers’ Quarters	Lots 9, 10, 16 DPS 743 744 Pt Secs 8 -11 Blk I Lots 2/3 DP 7252 Avon <del>Lot 2 DP 374238</del>	A/2
3.	Waihopai Valley	Leefield Station Homestead	Lots 9, 10, 16 DPS 743 744 Pt Secs 8 - 11 Blk I Lots 2/3 DP 7252 Avon <del>Lot 1 DP 374238</del>	A/2
4.	Waihopai Valley	Leefield Station Stables	Lots 9, 10, 16 DPS 743 744 Pt Secs 8 - 11 Blk I Lots 2/3 DP 7252 Avon <del>Lot 2 DP 374238</del>	A/2
5.	Waihopai Valley	Leefield Station Looseboxes	Lots 9, 10, 16 DPS 743 744 Pt Secs 8 - 11 Blk I Lots 2/3 DP 7252 Avon <del>Lot 2 DP 374238</del>	A/2
6.	Waihopai Valley	Leefield Station Maids’ Quarters	Lots 9, 10, 16 DPS 743 744 Pt Secs 8 - 11 Blk I Lots 2/3 DP 7252 Avon <del>Lot 1 DP 374238</del>	A/2
7.	Waihopai Valley	Leefield Station Cookhouse	Lots 9, 10, 16 DPS 743 744 Pt Secs 8 - 11 Blk I Lots 2/3 DP 7252 Avon <del>Lot 2 DP 374238</del>	A/2

*C.R.B.*

<b>Planning Map Notation</b>	<b>Location</b>	<b>Name</b>	<b>Legal Description</b>	<b>Class/Category</b>
8.	Waihopai Valley	Leefield Station Woolshed	Lots 9, 10, 16 DPS 743 744 Pt Secs 8 - 11 Blk I Lots 2/3 DP 7252 Avon  Lot 2 DP-374238	A/2
...92.	<u>926 Wairau Bar Road, Spring Creek.</u>	<u>Pilot's House</u>	<u>Section 5 Sq 28 North Boulder Bank Registration District</u>	<u>A/1</u>

C.R.B.

## **Appendix D:**

### **Plan Change Marlborough Sounds Resource Management Plan**

### **Volume 2: Appendix A – Plan Change #17 Marlborough Sounds Resource Management Plan:**

**Appendix D – Plan Change Marlborough Sounds Resource Management Plan**

Volume 2: Appendix A – Plan Change #17 Marlborough Sounds Resource Management Plan:

The changes identified below reflect the Committee’s decision on Plan Change #17. Where text is proposed to be added to the Plan, it has been shown as underlined. Where text is to be deleted from the Plan it has been shown with a line through it. Where text is shown in the following schedule without any underlining or strikethrough, it is existing text from the Plan and has been included for context and to assist the reader in determining where the changes occur, and does not form part of the plan change.

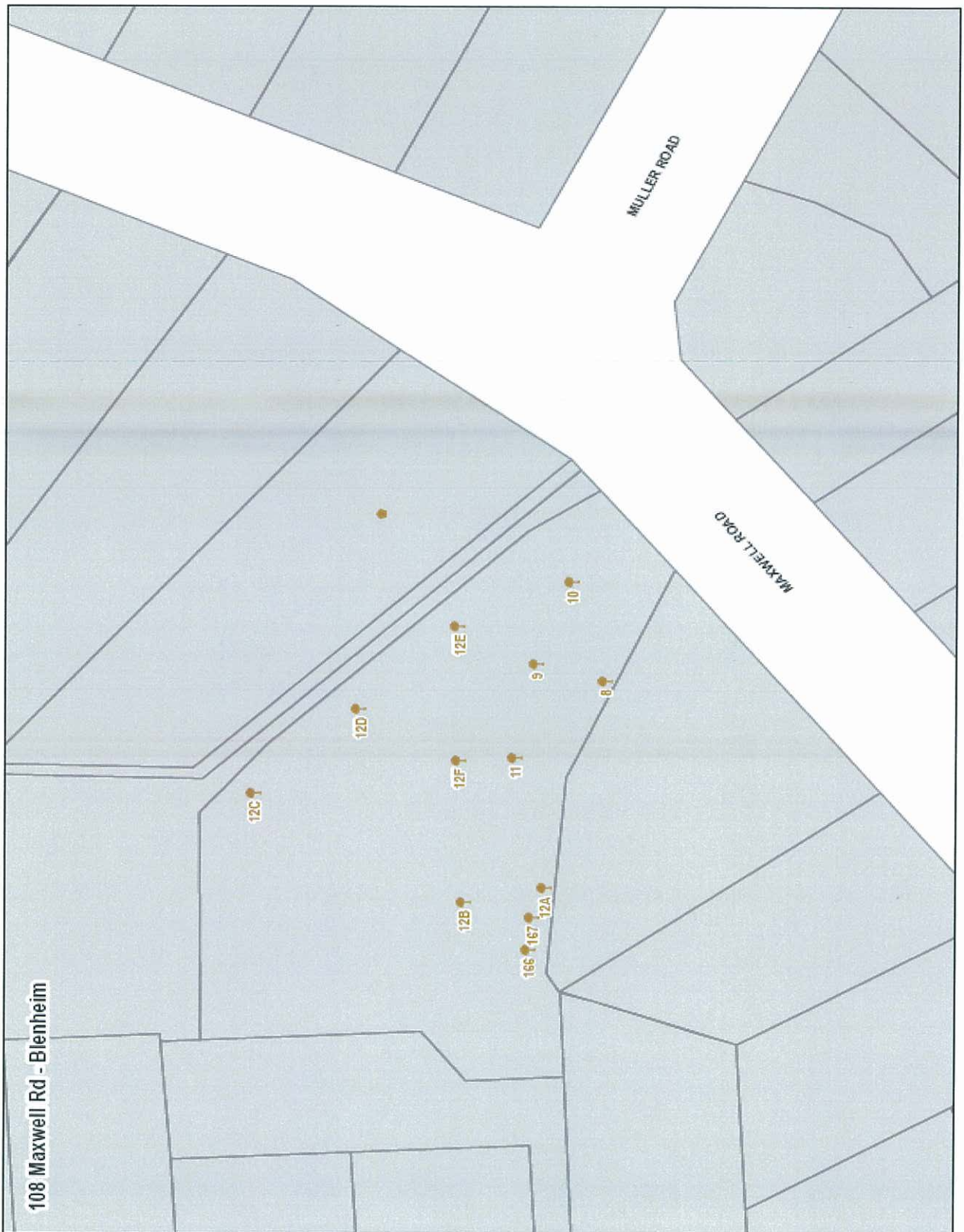
**Historic Buildings, Places and Sites**

Planning Map Notation	Class	NZHPT Register No	Name	Location	Legal Description
<del>56</del>	<del>A</del>		<del>Plateau Quarry - Oparapara Samson Bay Argillite Quarry</del>	<del>Croisilles - French Pass Road, Croisilles Harbour, Marlborough Sounds</del>	<del>Lot 1 DP 3071</del>
<del>57</del>	<del>A</del>		<del>West Pelorus Quarry - Oparapara Samson Bay Argillite Quarry</del>	<del>Croisilles - French Pass Road, Croisilles Harbour, Marlborough Sounds</del>	<del>Sec 3 Blk VI Tennyson SD</del>
58	A		Argillite Quarry Area	Croisilles - French Pass Road, Croisilles Harbour, Marlborough Sounds	Lot 1 DP 13040 and Sec 3 Blk VI Tennyson SD
59	A		<u>Tory Channel Leading Lights - Two Pyramidal Structures</u>	<u>Lighthouse Reserve, Whakenui, Arapawa Island, Tory Channel</u>	<u>Blk 13 V Arapawa Island</u>
60	A B		<u>Tory Channel Leading Lights - Oil Store Building</u>	<u>Whakenui, Arapawa Island, Tory Channel</u>	<u>Lot 1 DP 3612</u>

C.R.B.

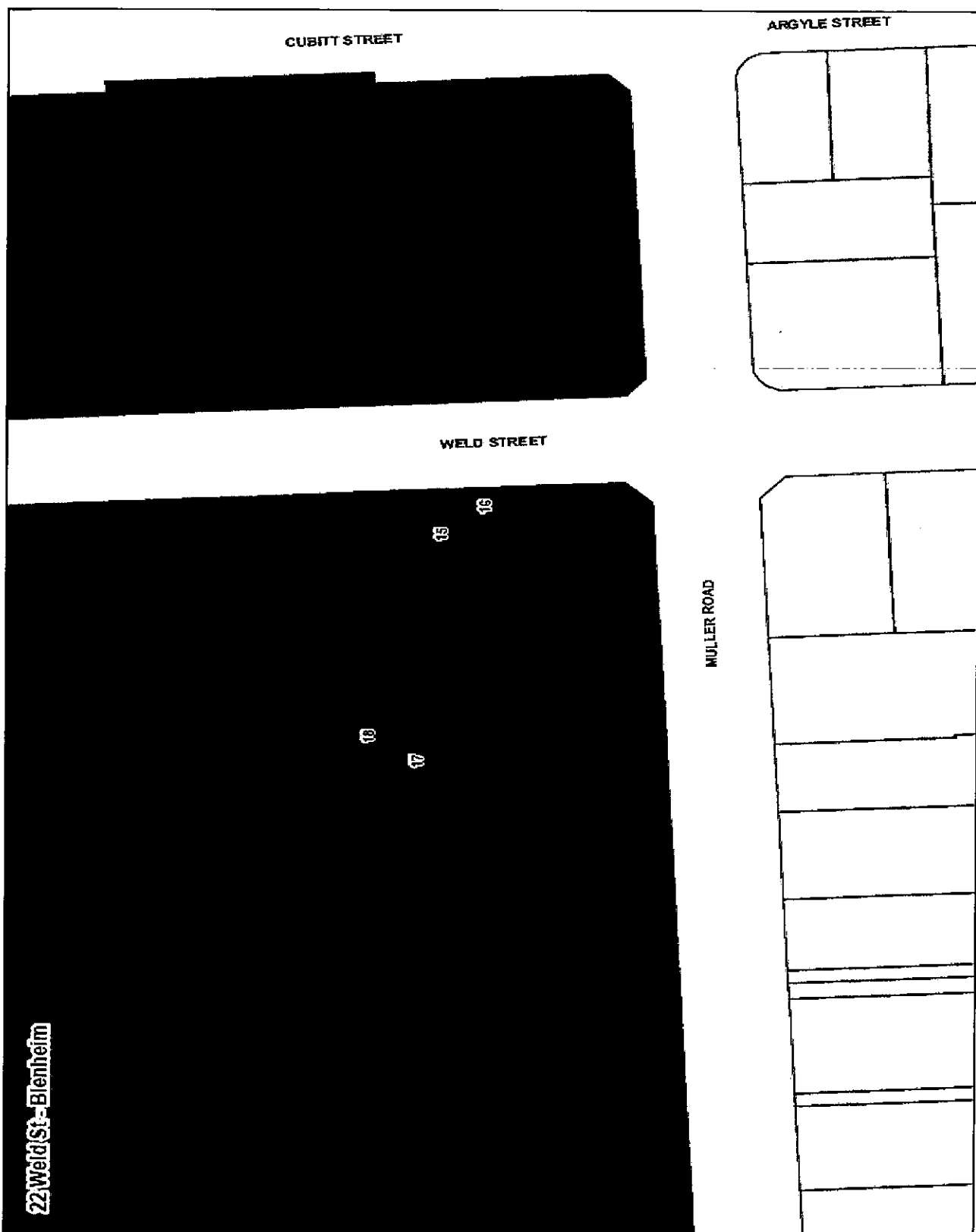
# **Appendix E:**

## **Indicative Planning Maps to the WARMP**

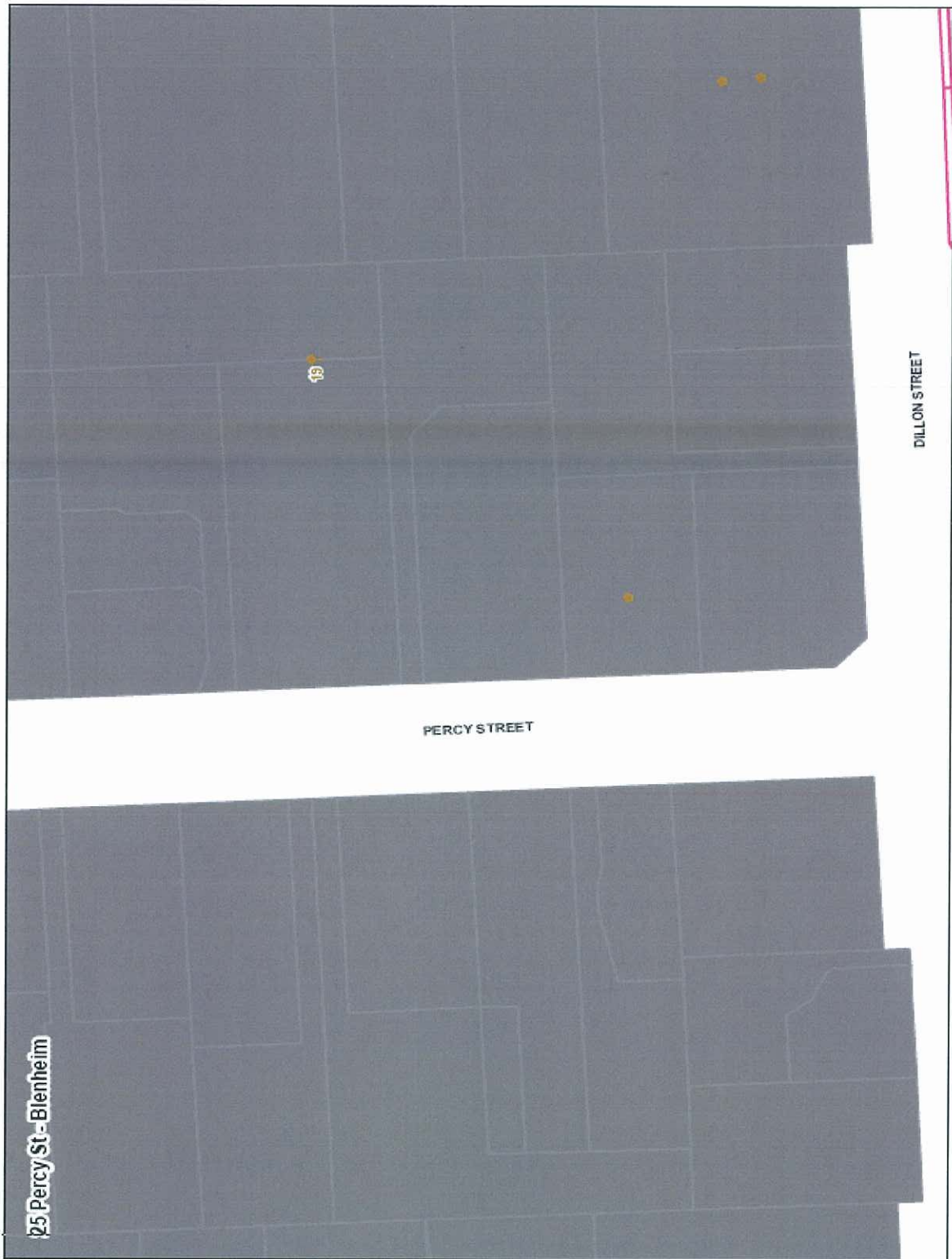


C.R.B.





C.R.B.



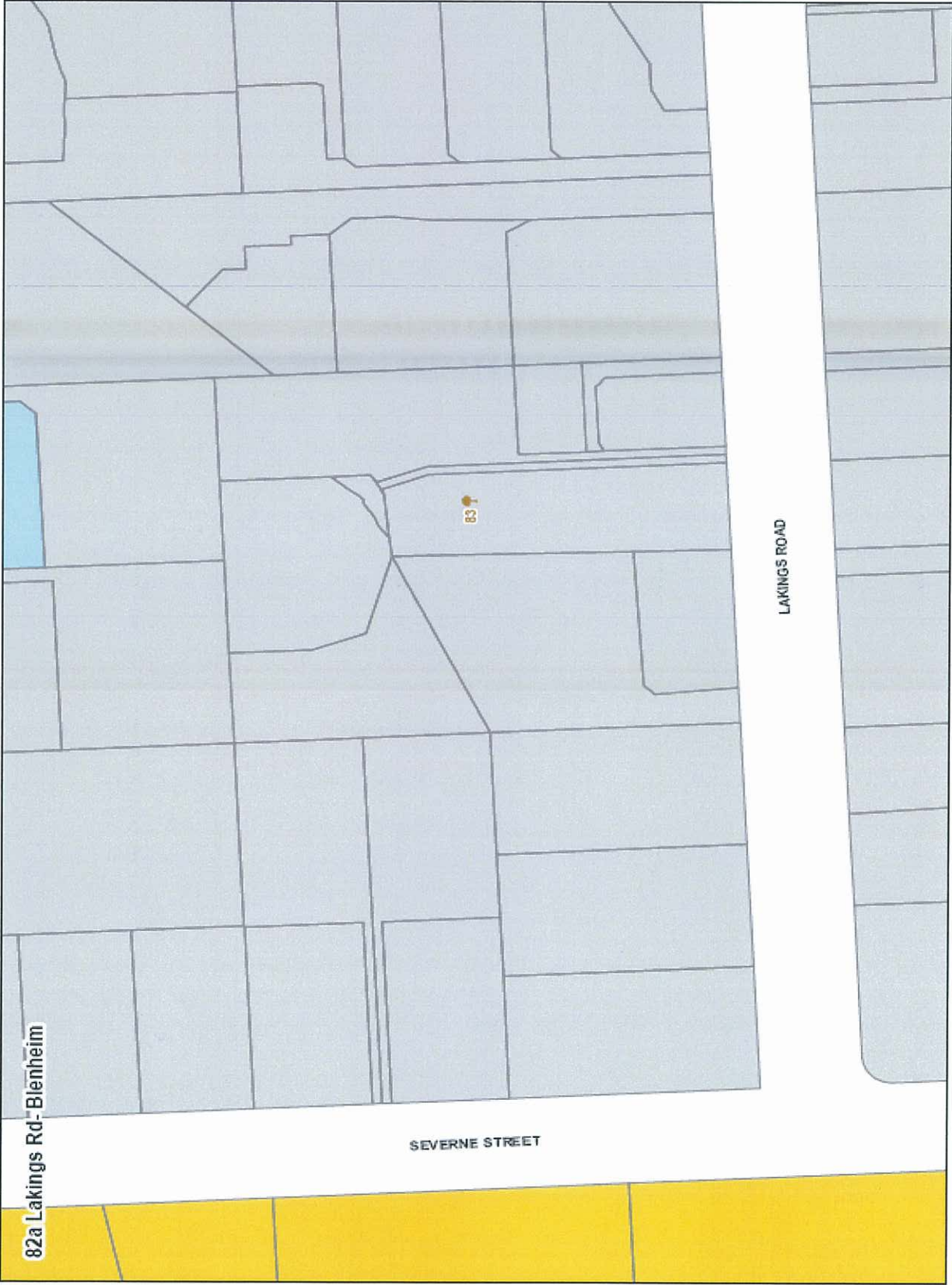
C.R.B.



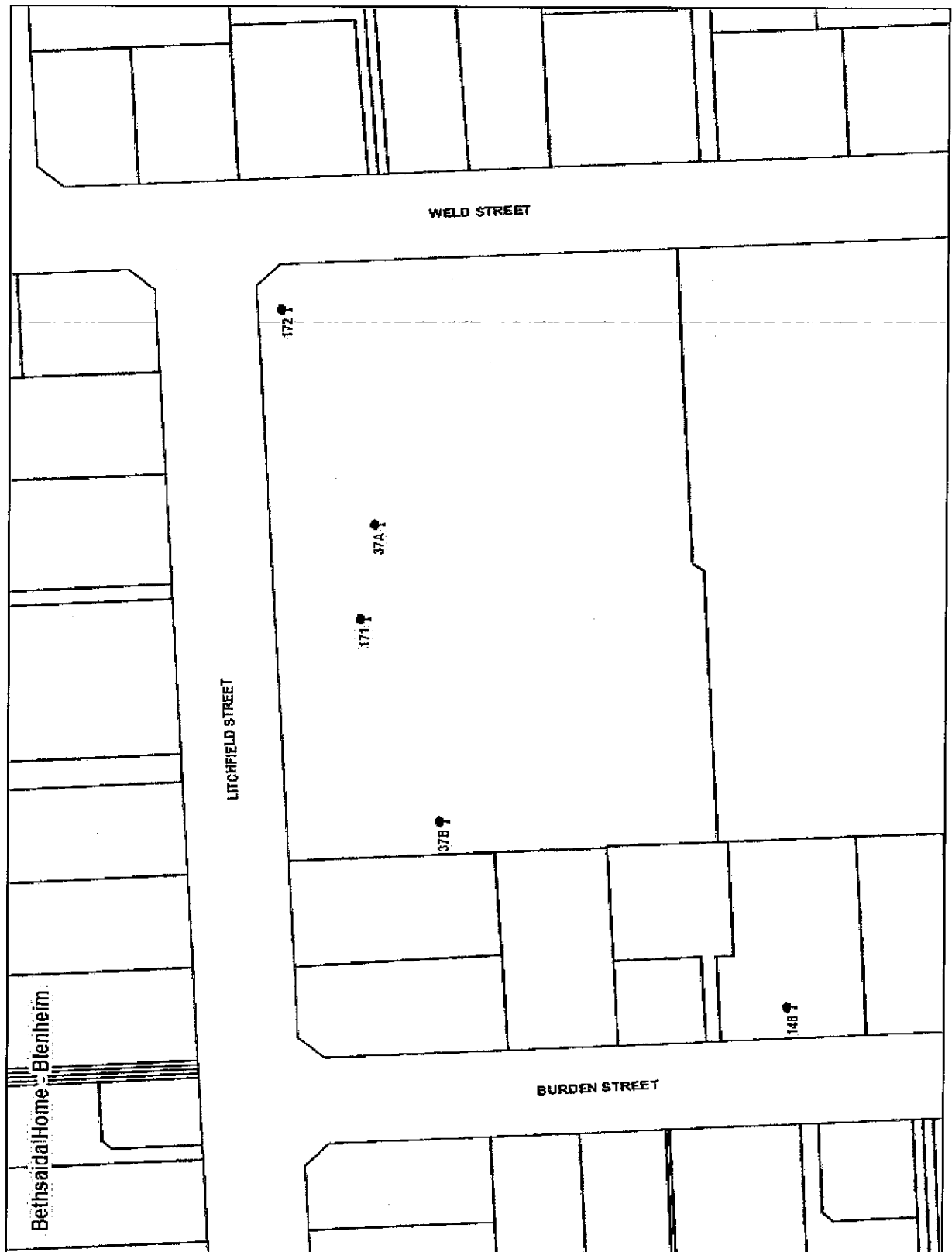
C.R.B.



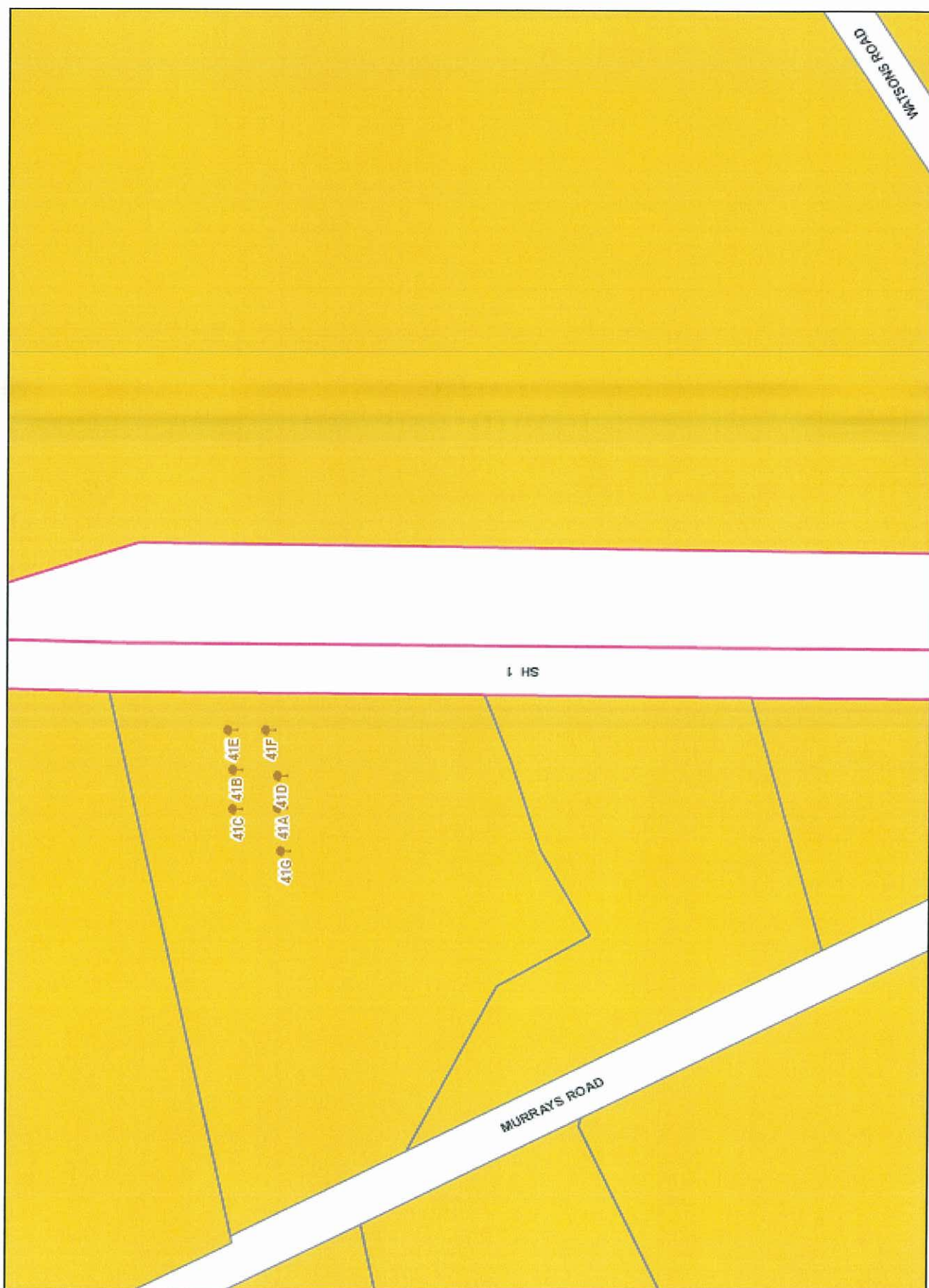
C.R.B.



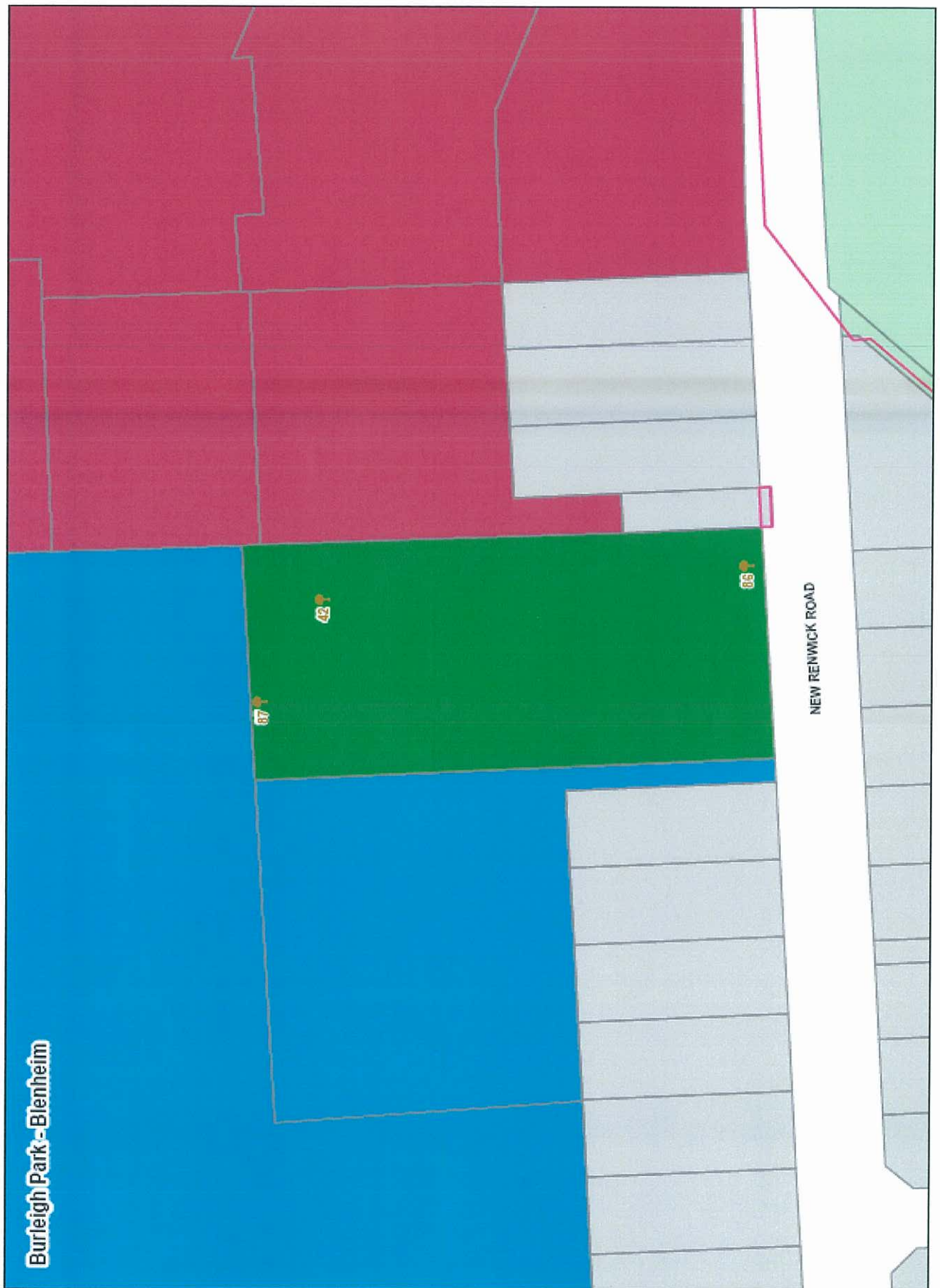
C.R.B.



C.R.B.



*C.H.B*

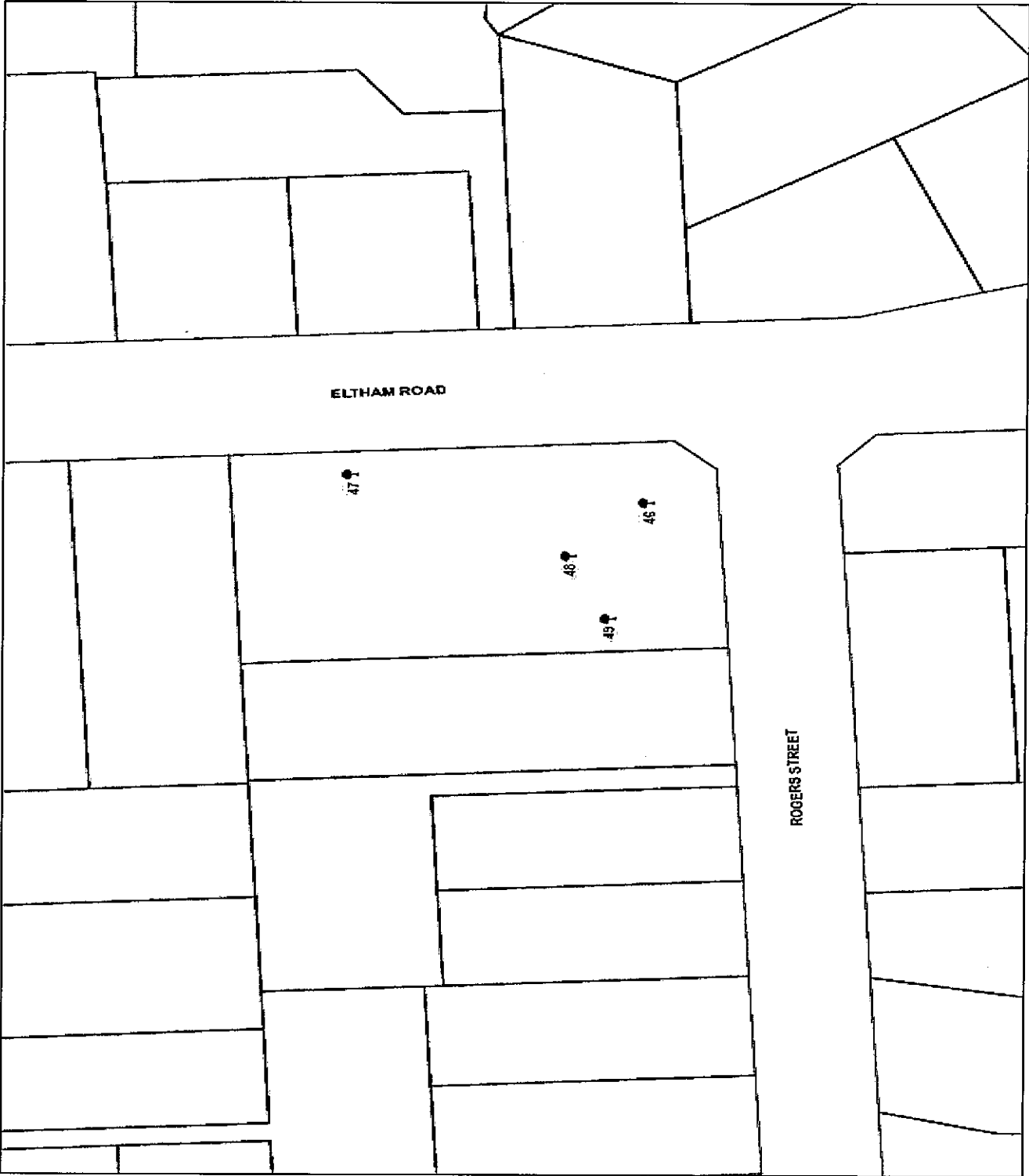


CRB.

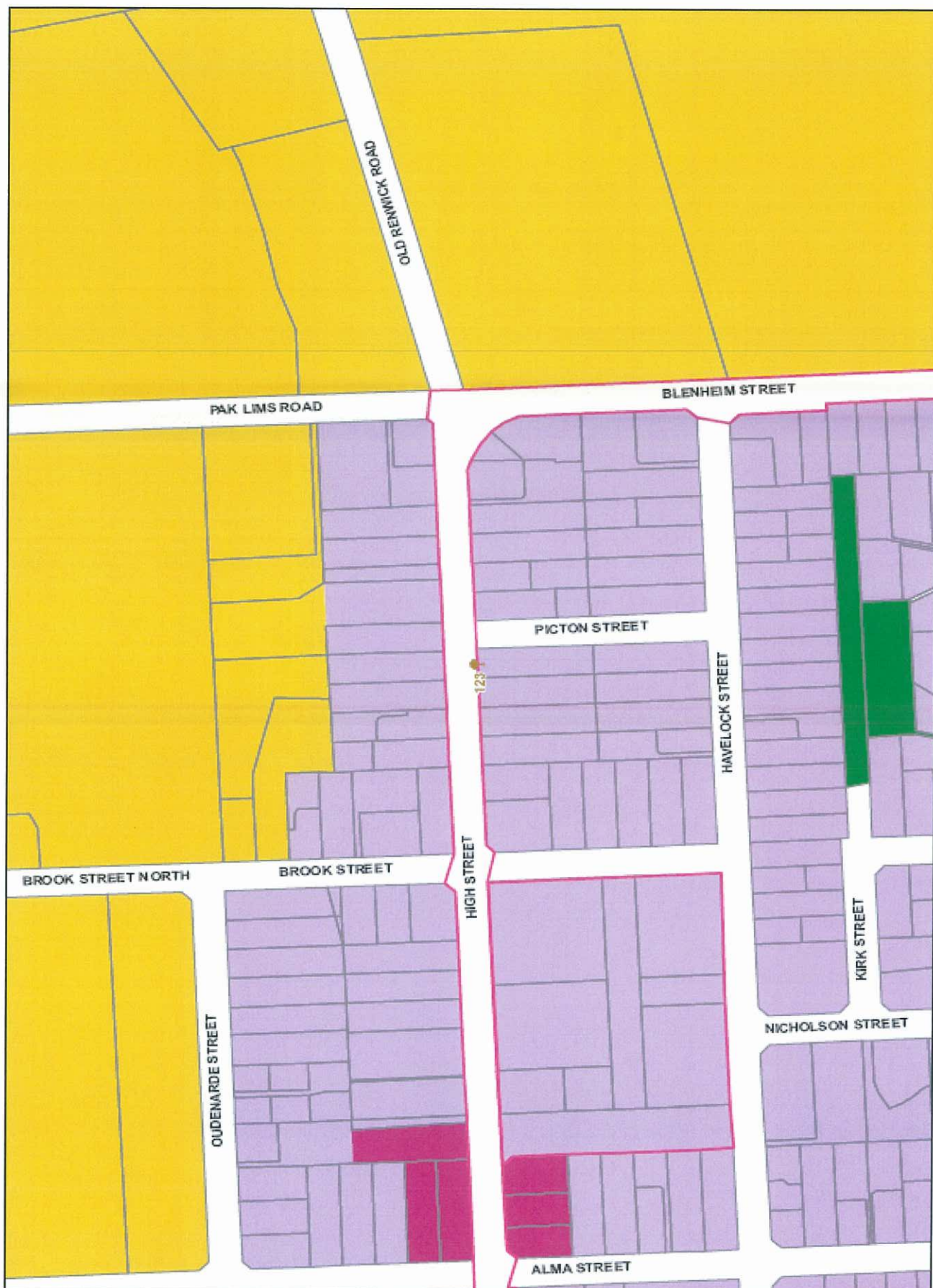




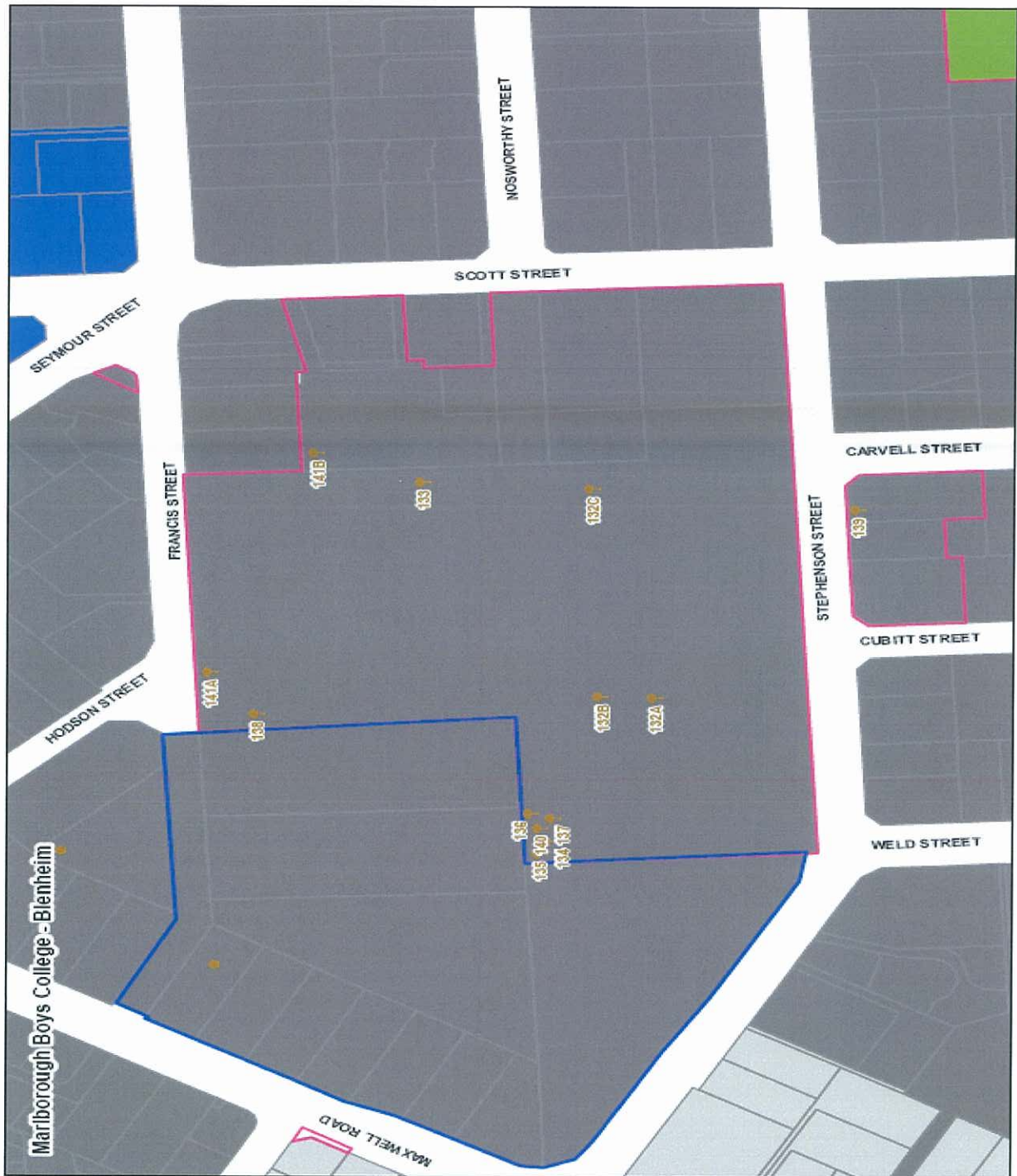
CRB.



C.R.B.



C.R.B.



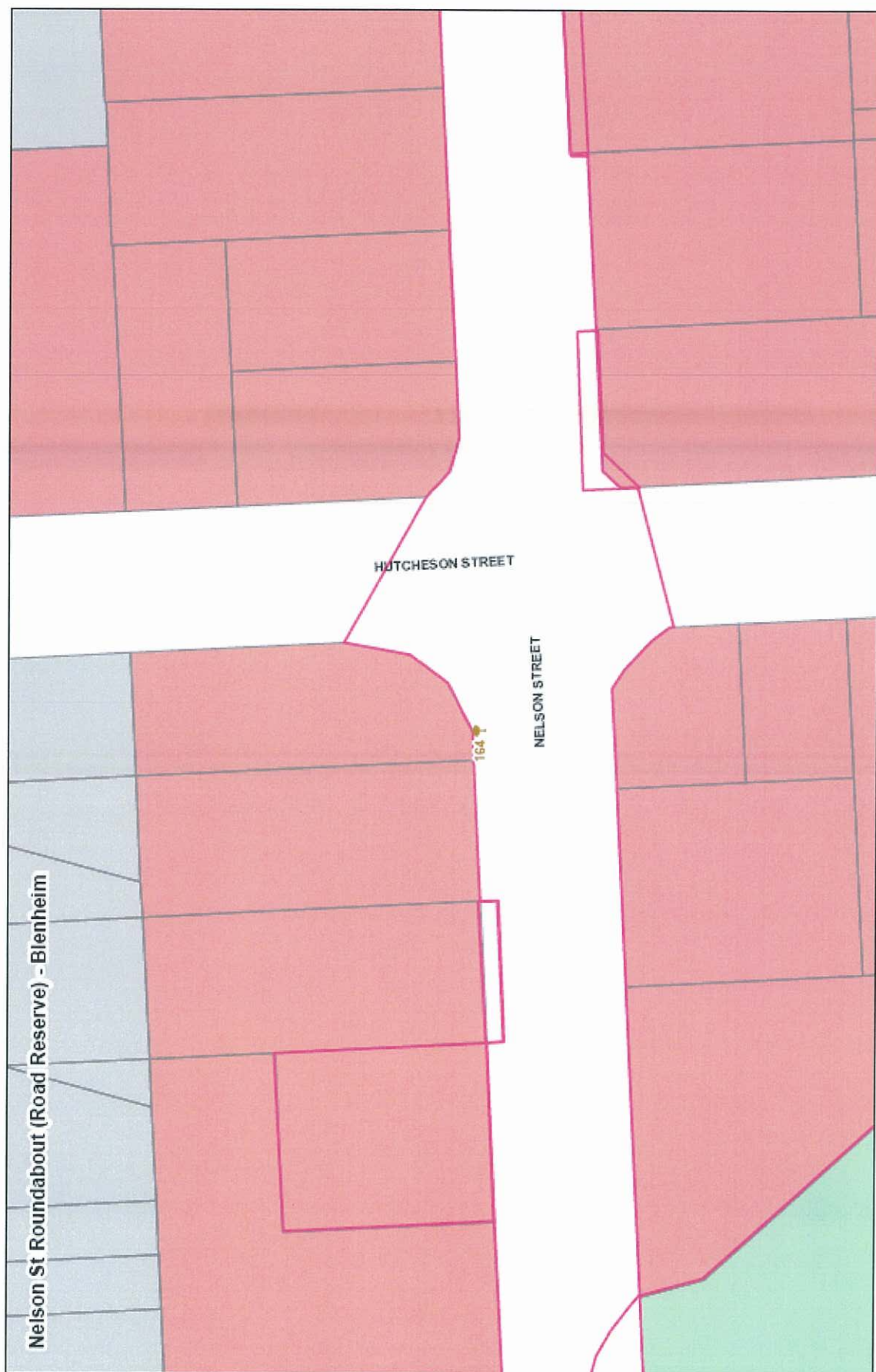
C.R.B.



C.R.B.



C.R.B.

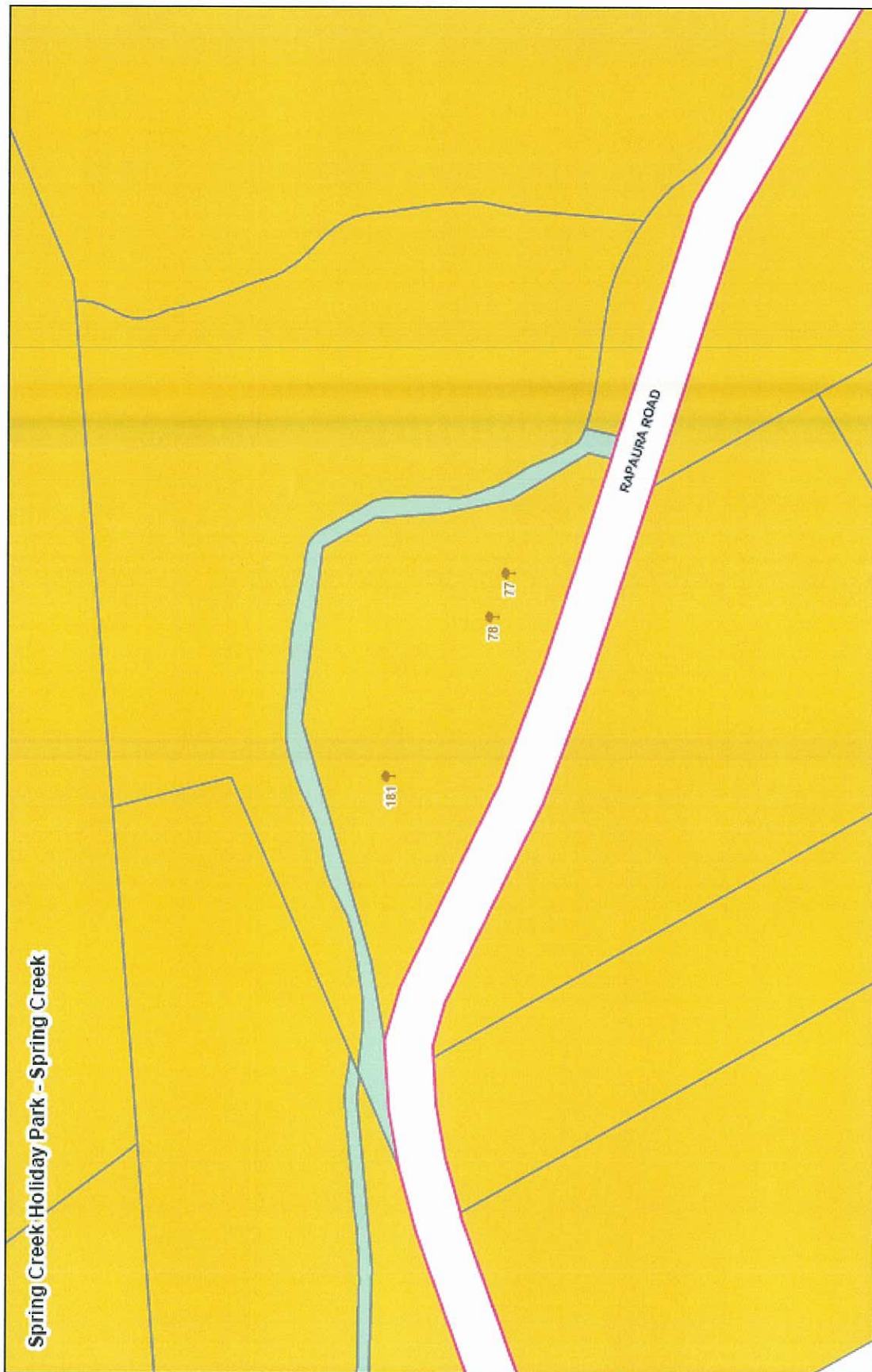


C.R.B.



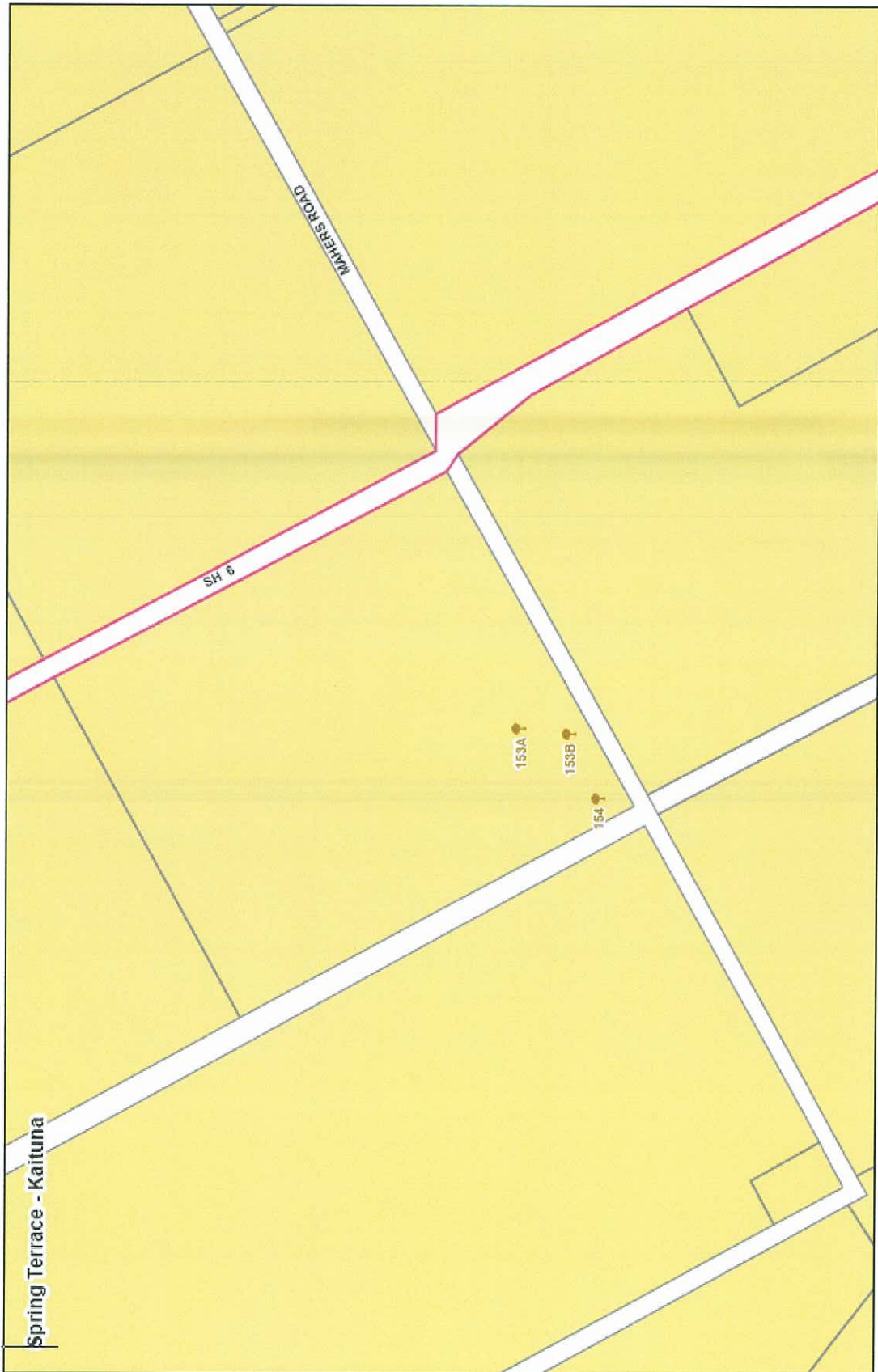
C.R.B.



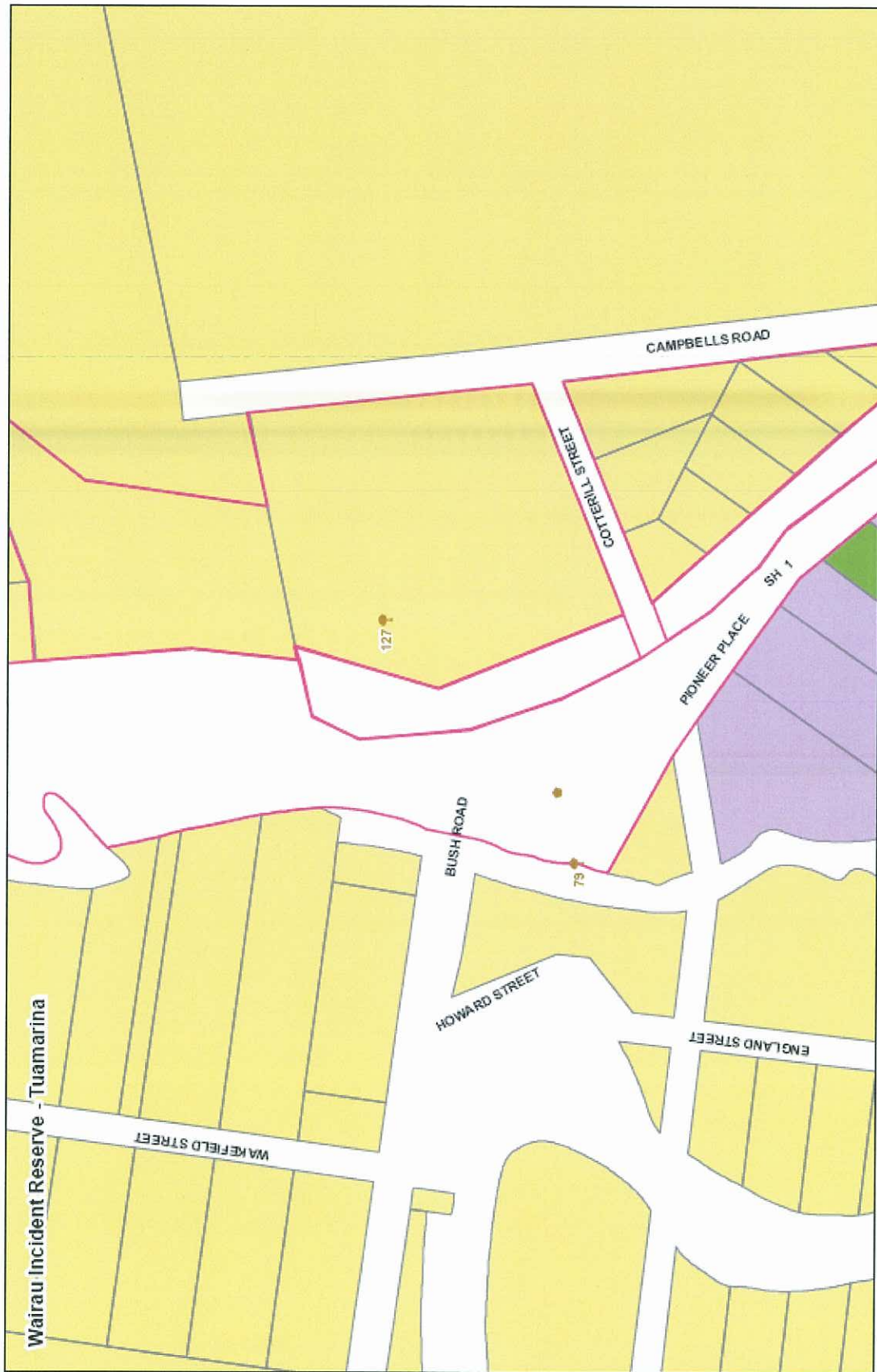


Spring Creek Holiday Park - Spring Creek

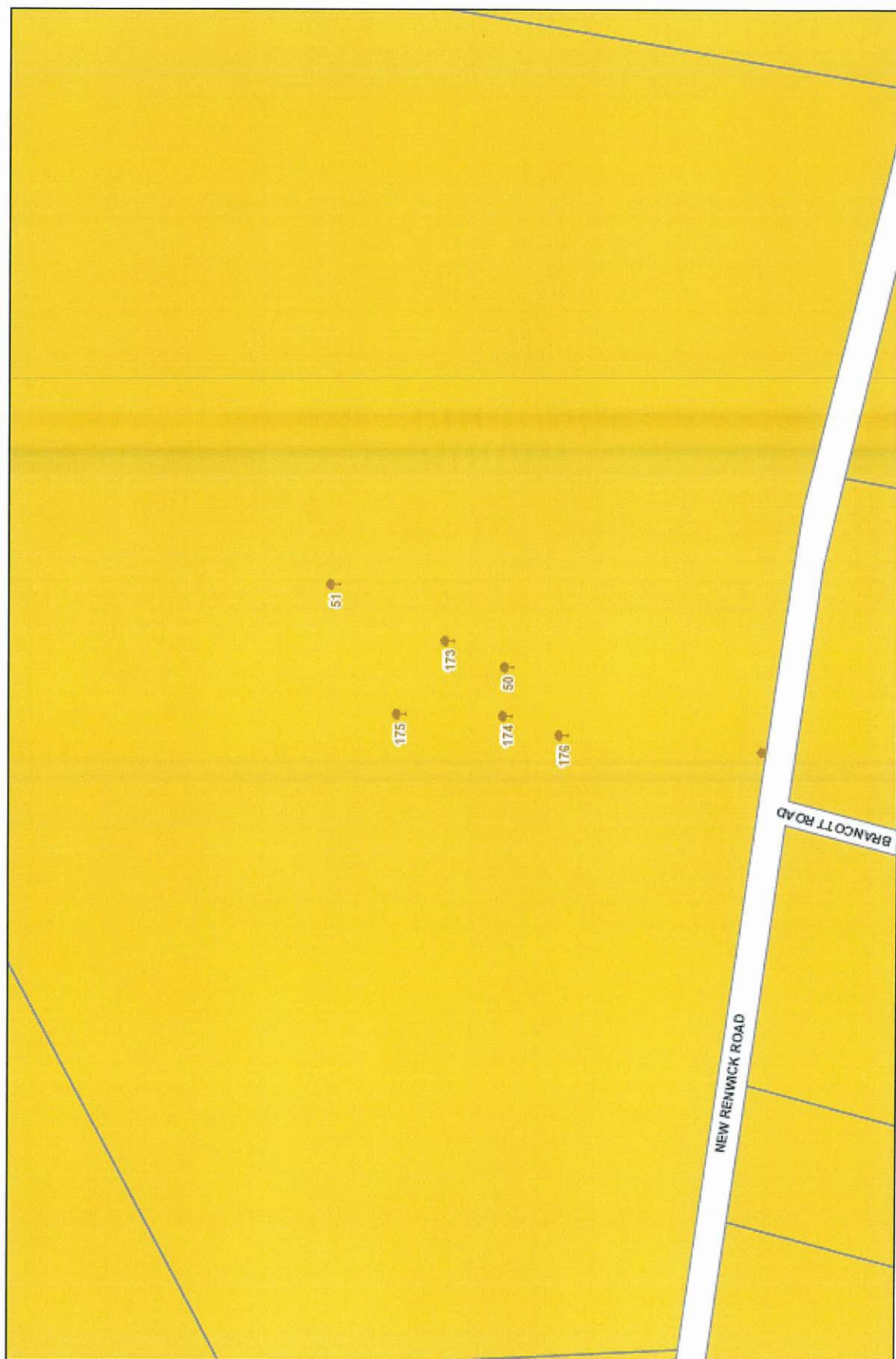
C.B.B.



C.h.B.

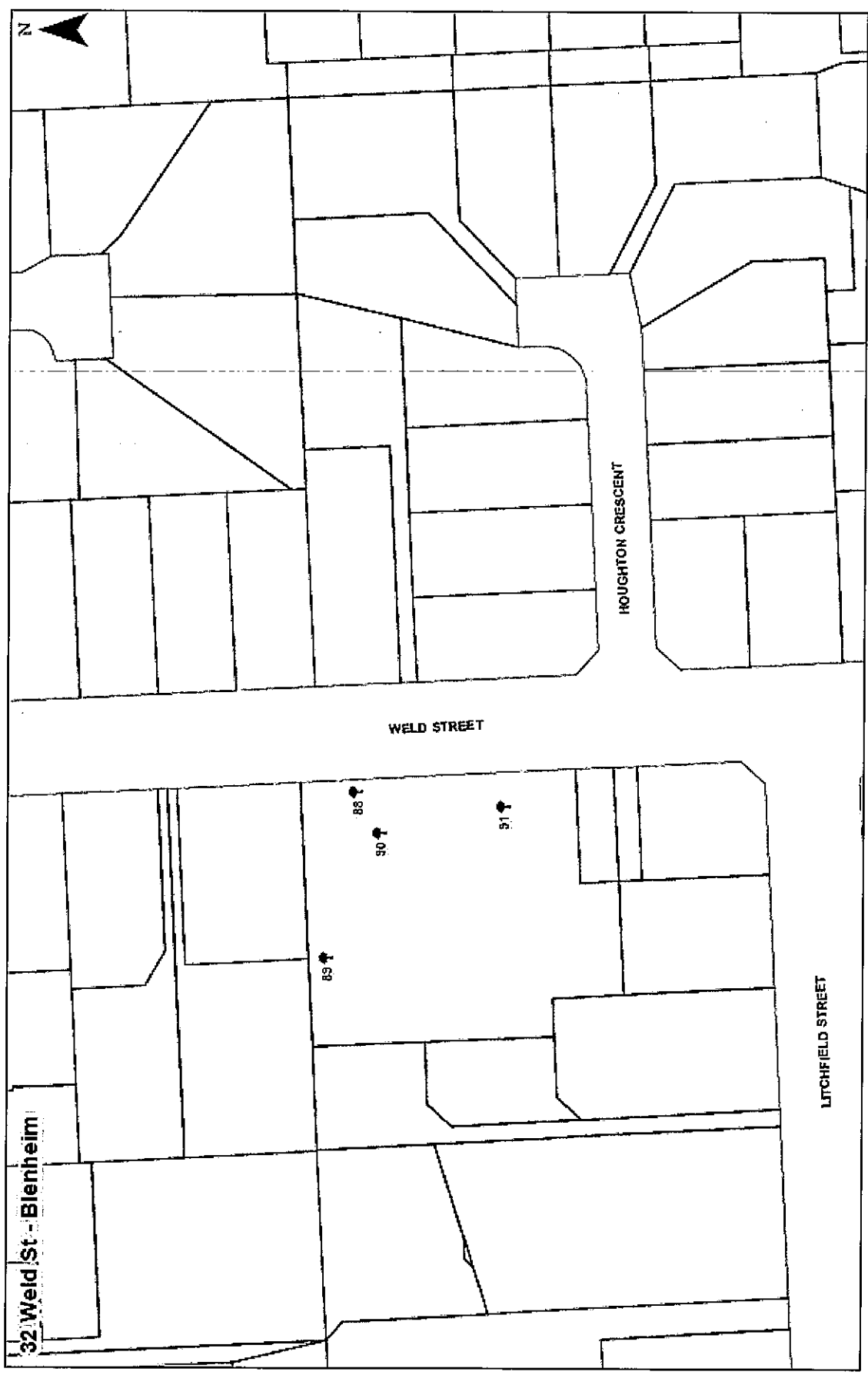


C.R.B.





C.R.B.



C.R.B.

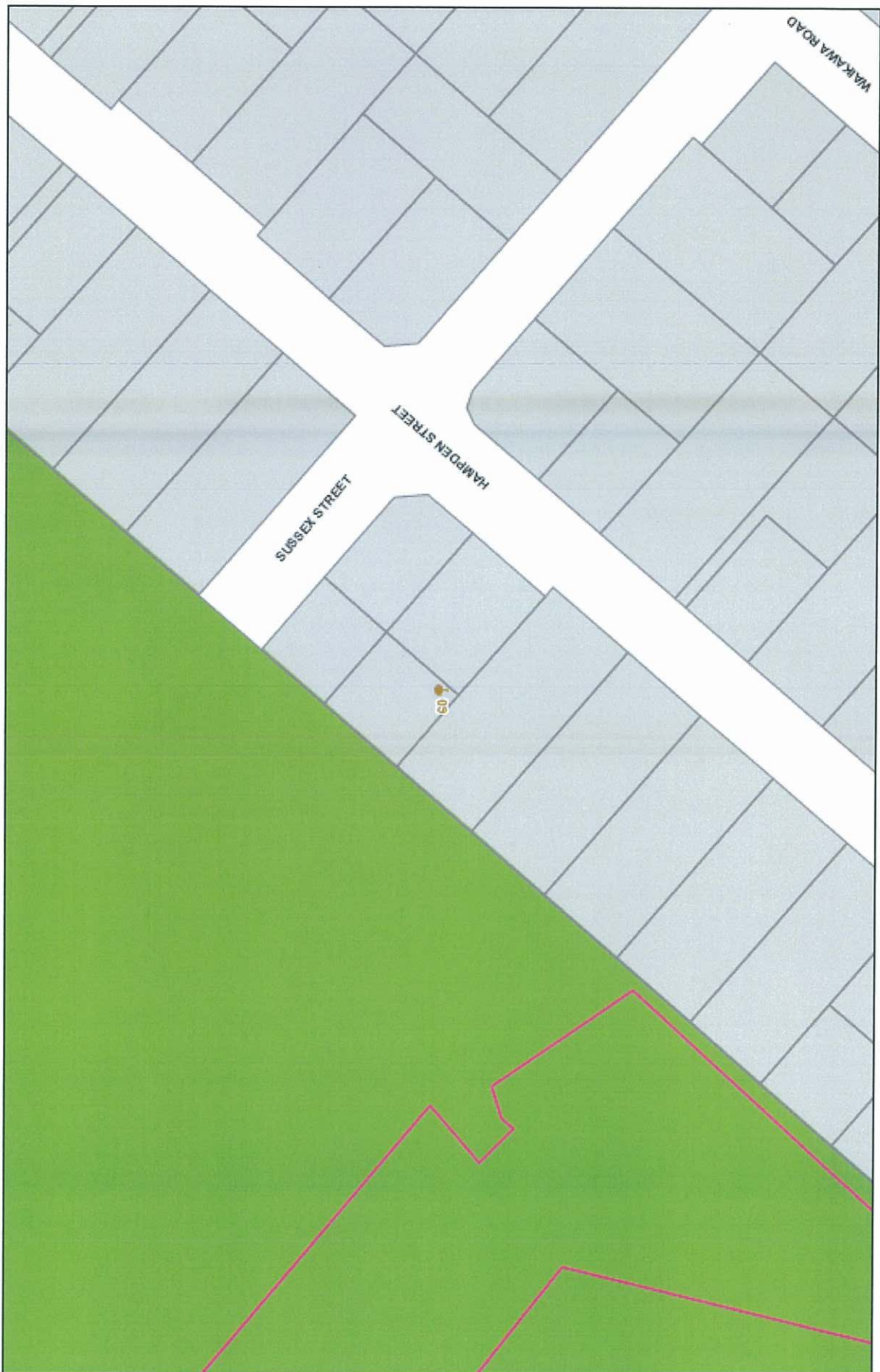
### The Pilots House



C.R.B.

# **APPENDIX F – Indicative Planning Maps to the MSRMP**





C.R.B.



C.R.B.



C.R.B.



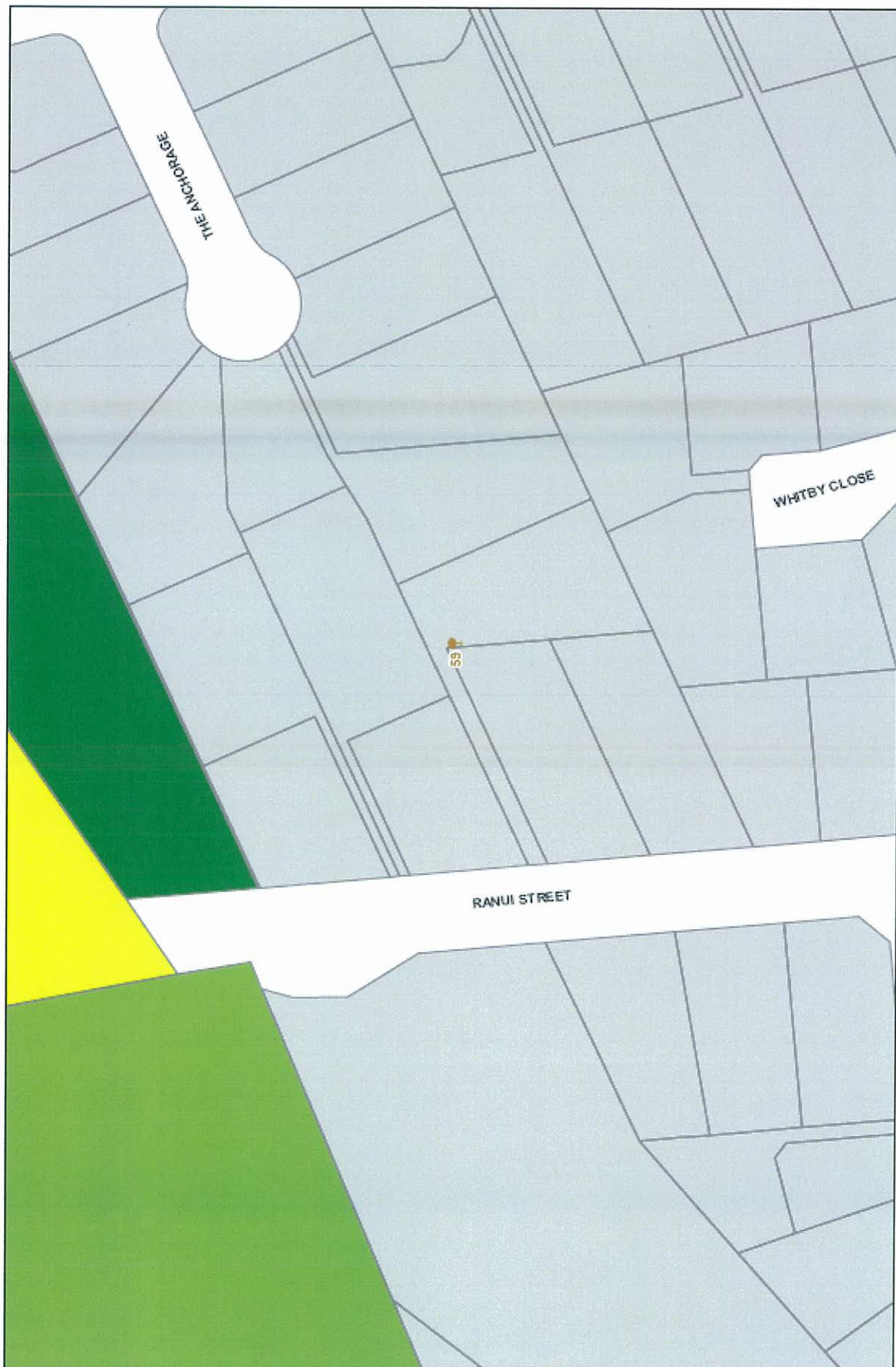
C.R.B.



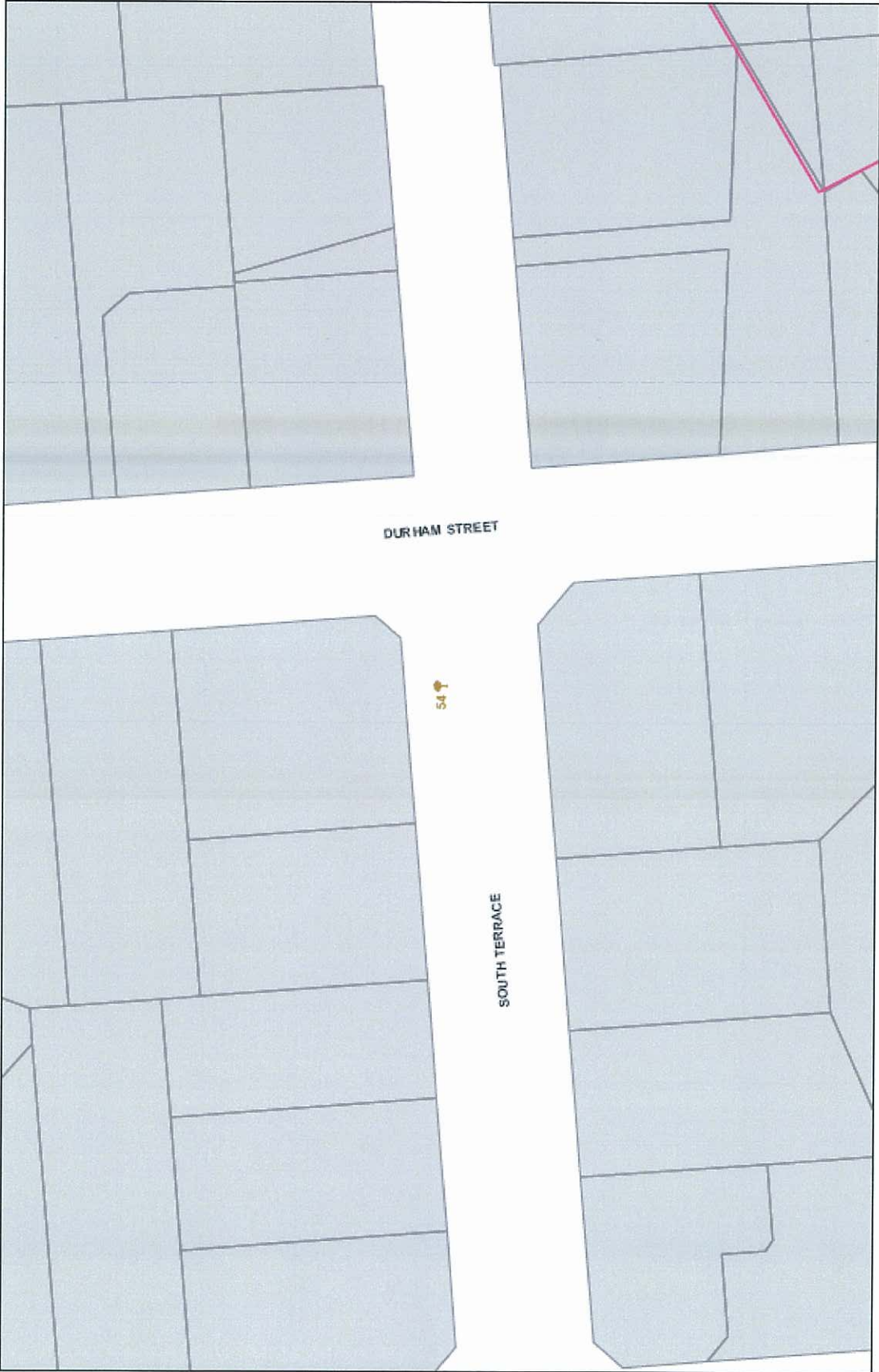
C.R.B.



C.R.B.



C.R.B.

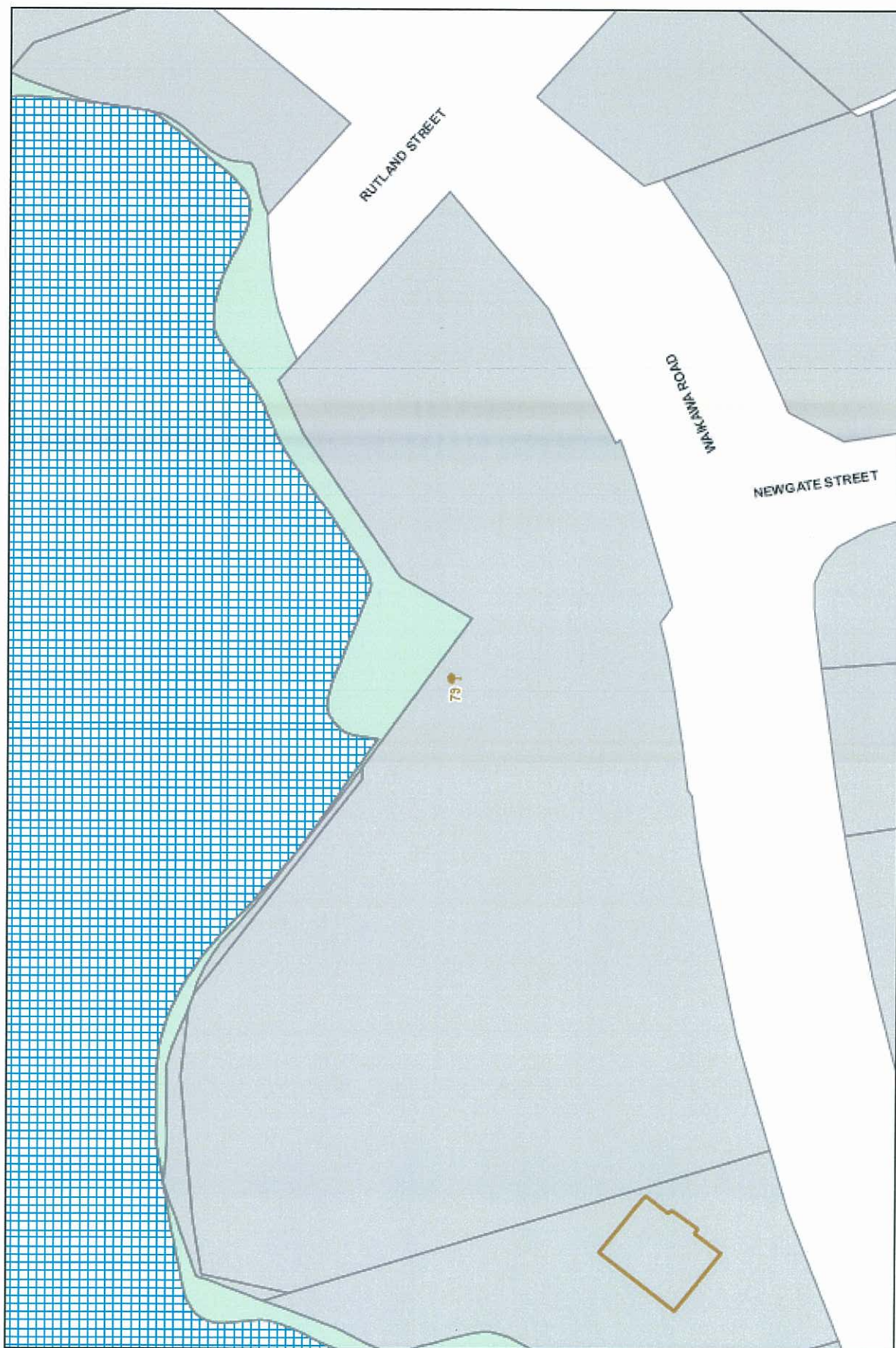


C.R.B.





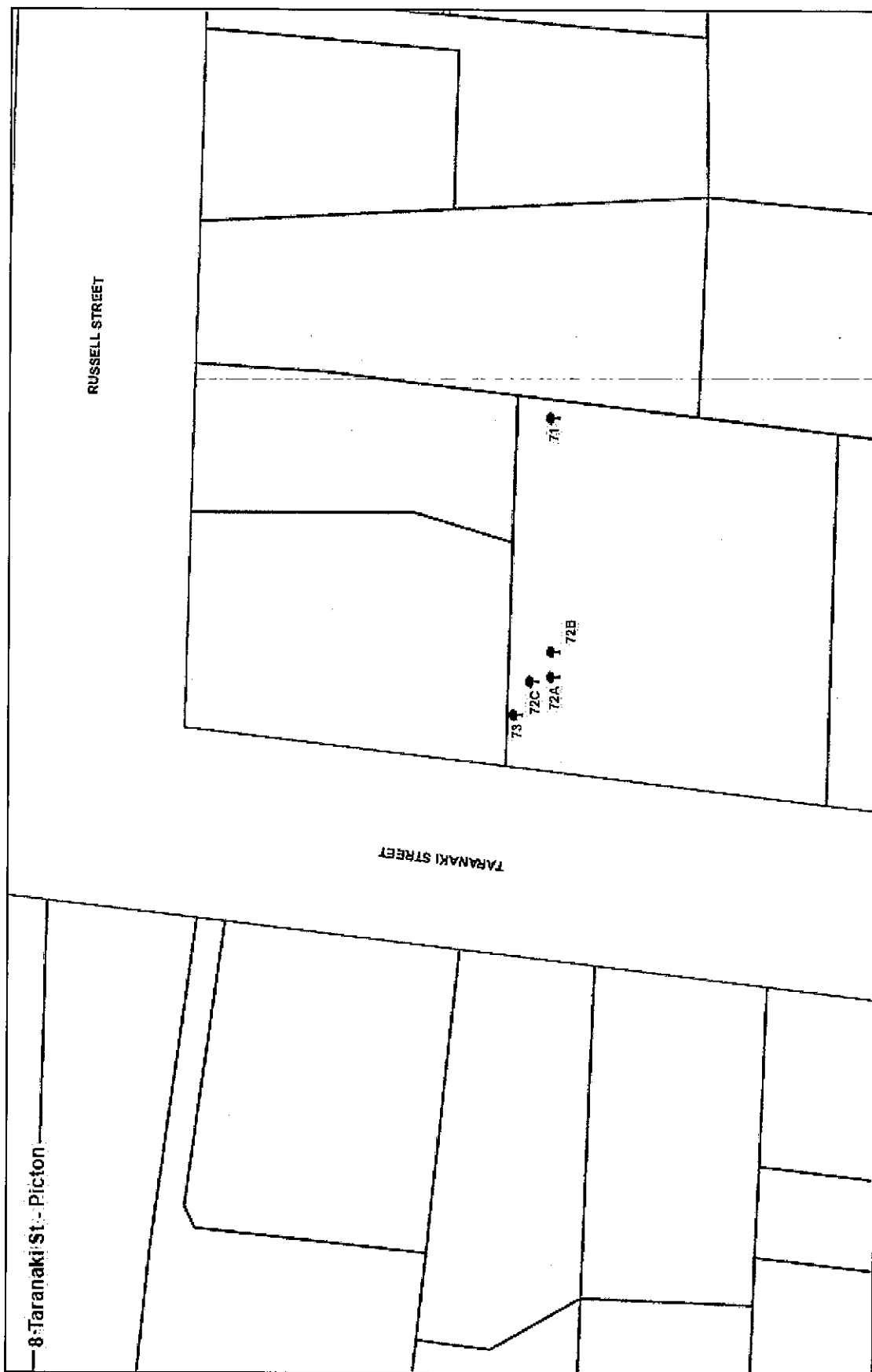
*C.R.B.*



C.H.B.



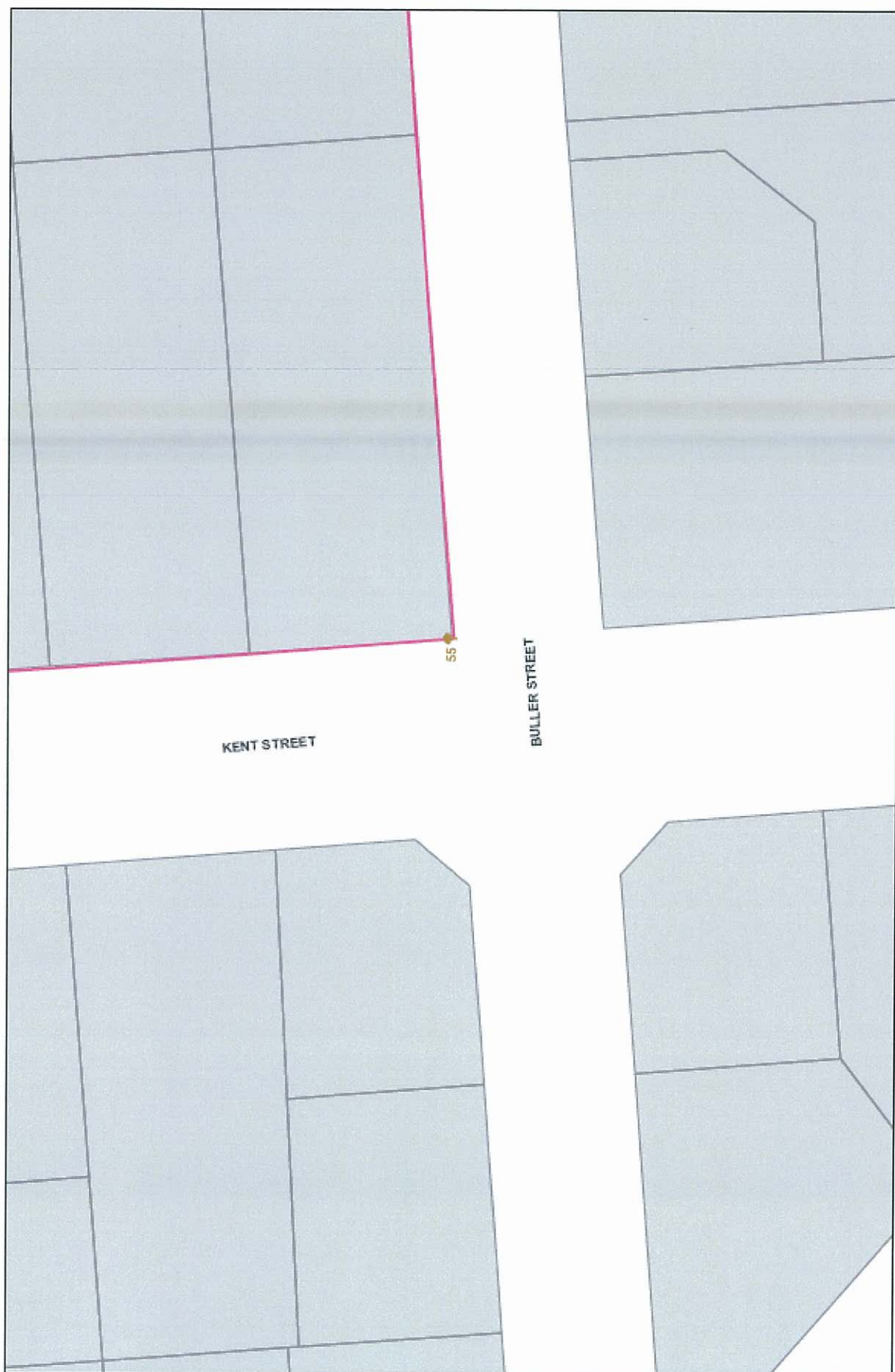
C.R.B



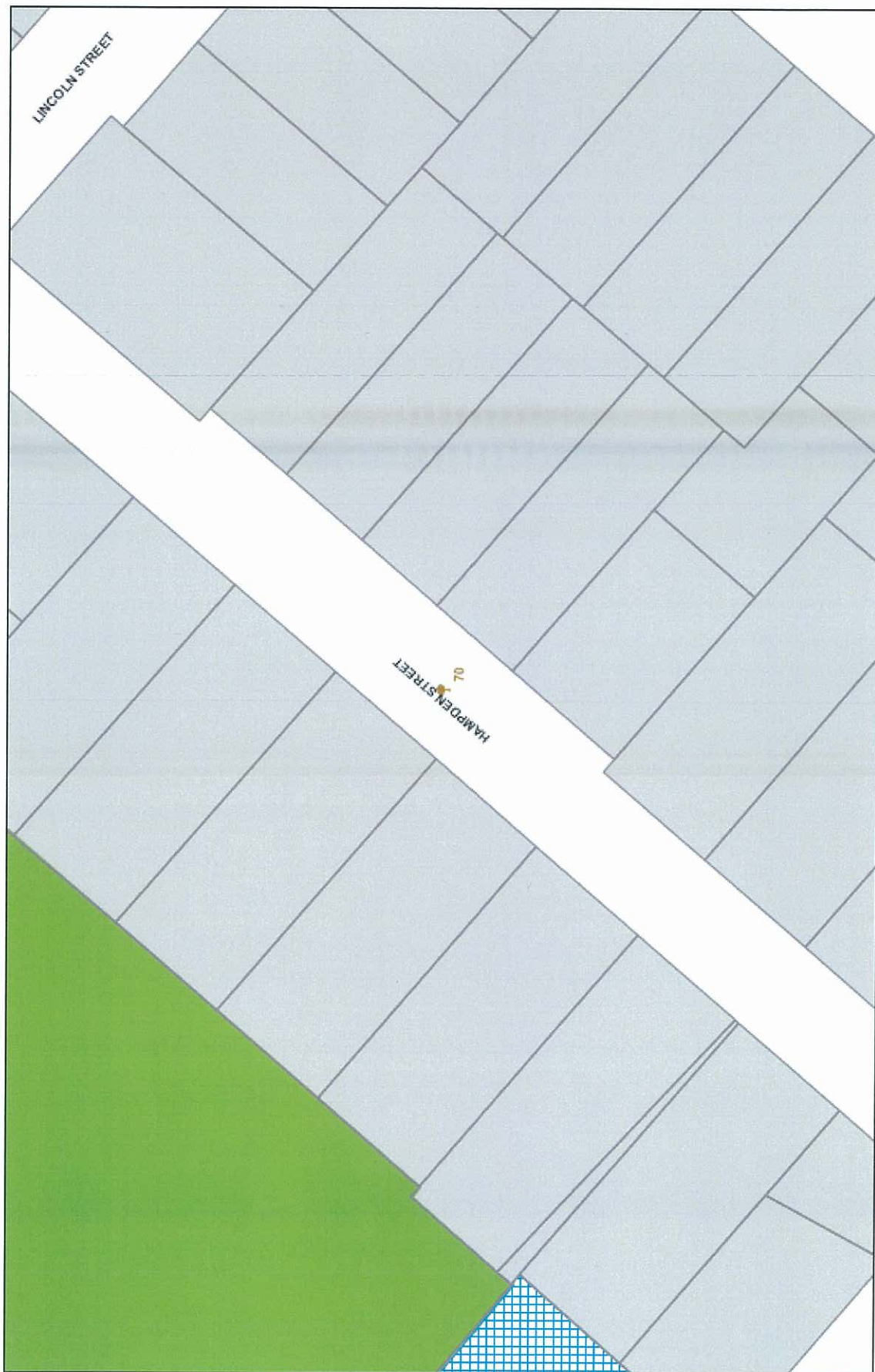
C.R.B.



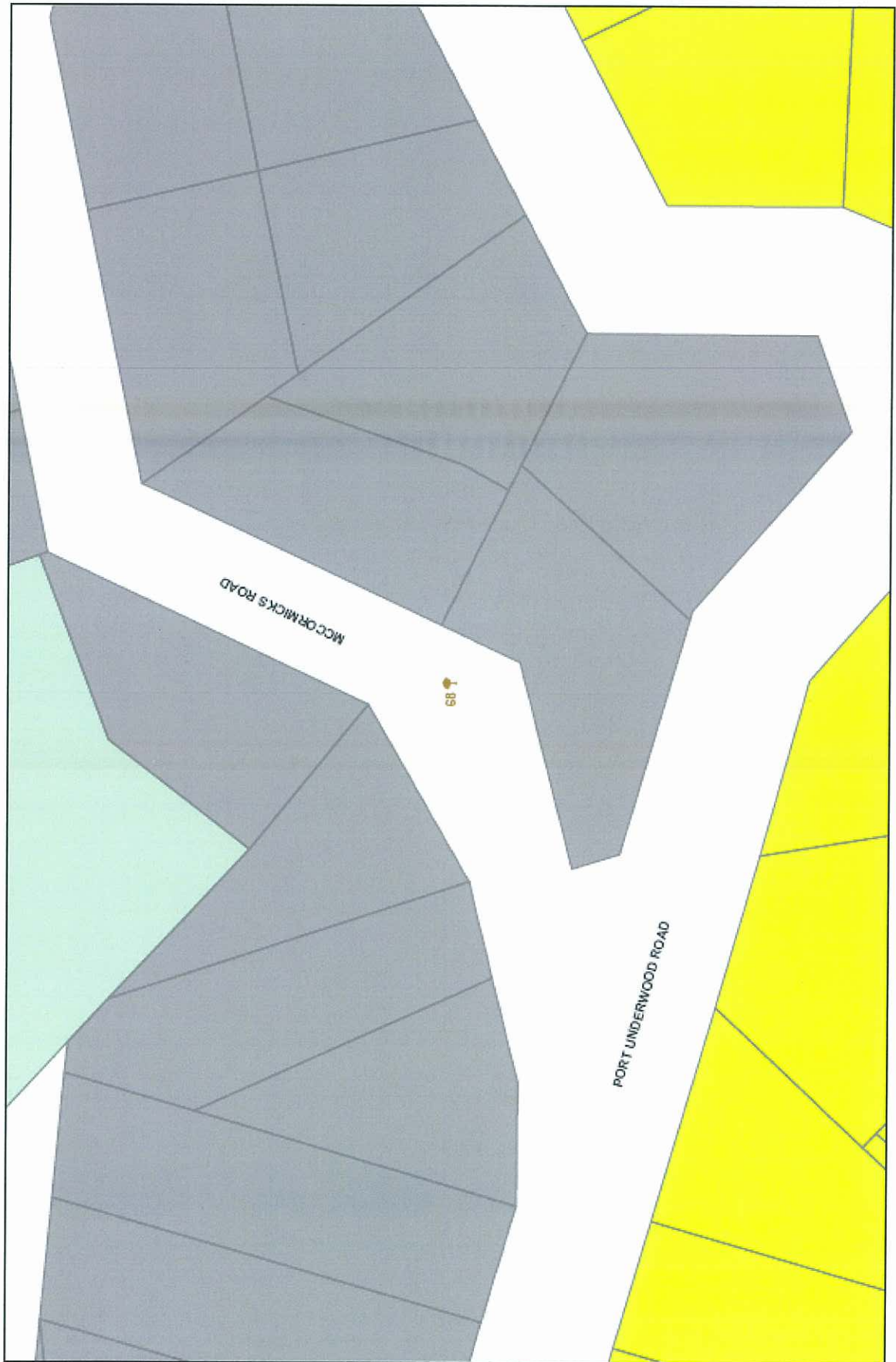
C.R.B.



*C.R.B.*

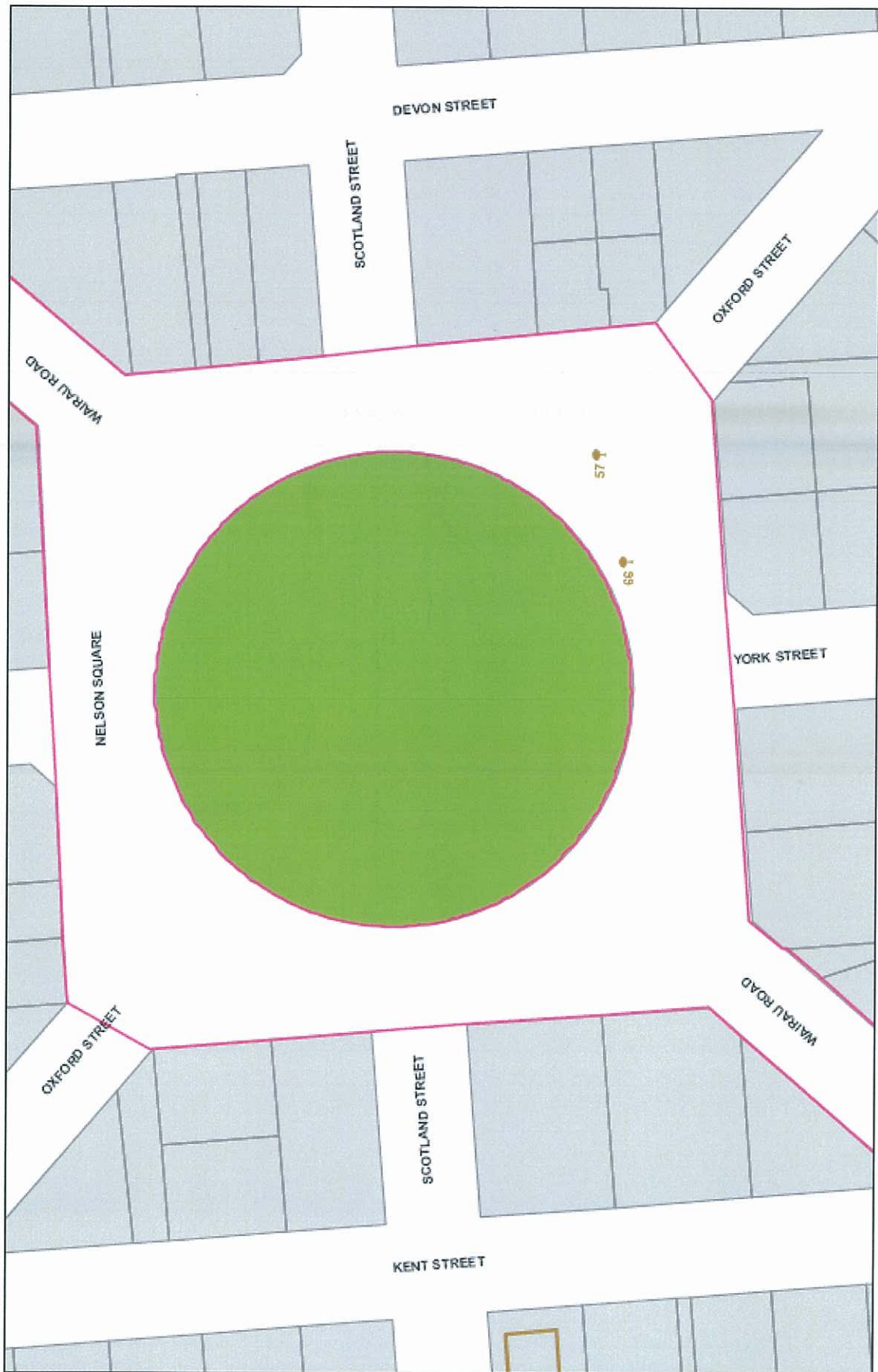


C.H.B.



C.R.B.





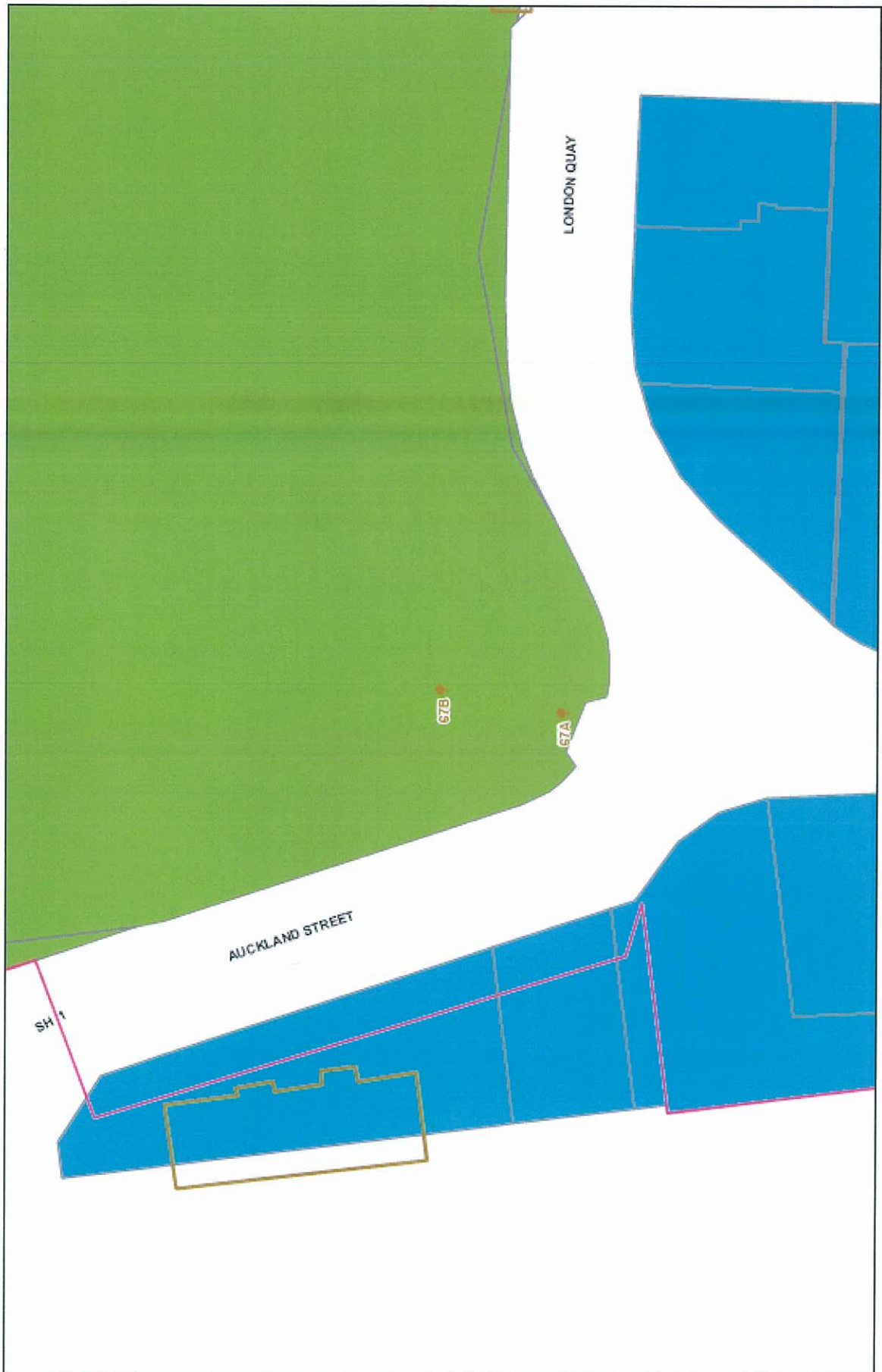
C.H.B.



C.R.B.



C.R.B



C.R.B.



C.R.B.



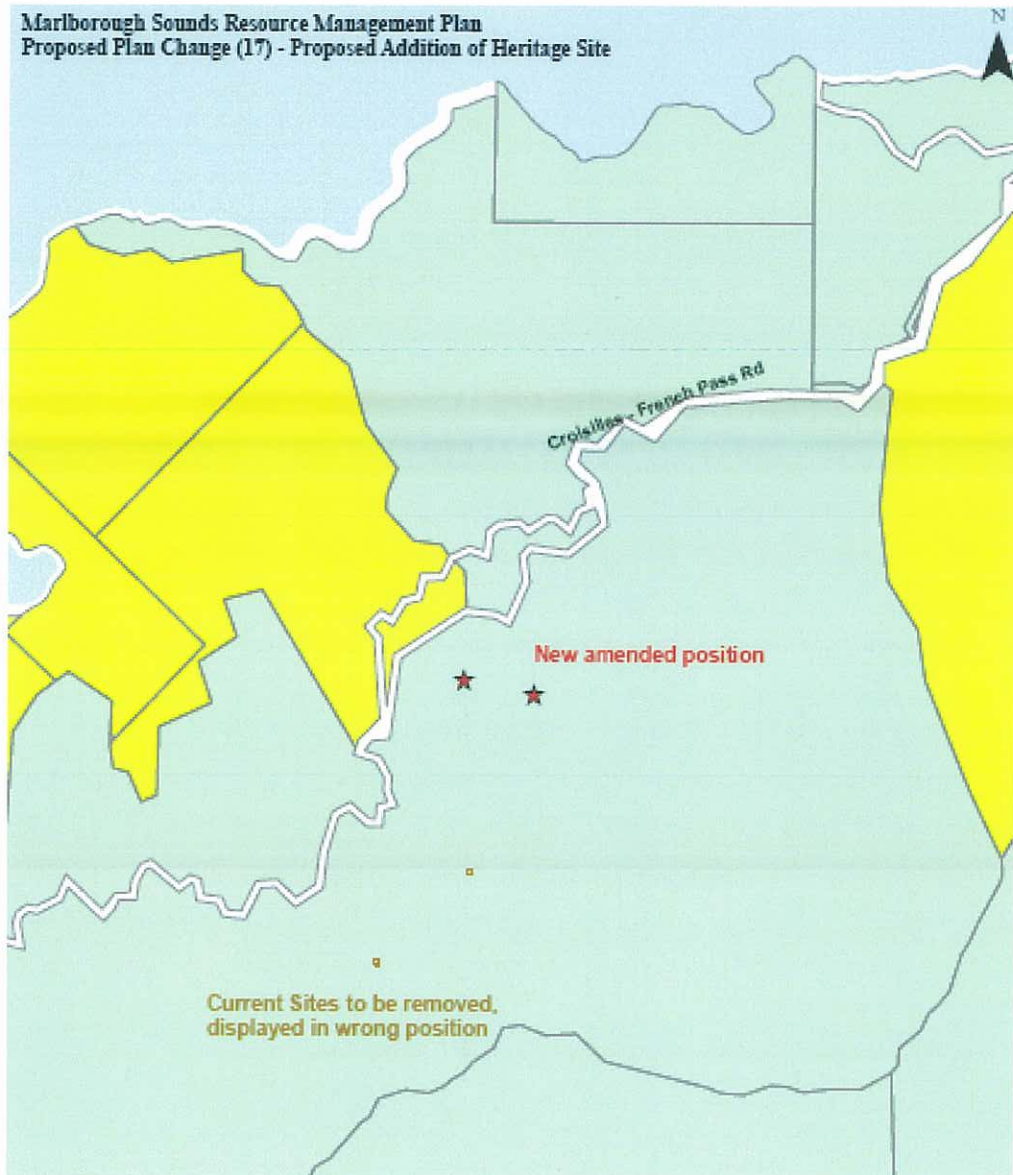
Te Mara, Double Bay

C.R.B.



C.R.B.

### Oparapara Samson Bay Argillite Quarries



C.R.B.



## The Leading Lights and Oil Store

