

Wairau/Awatere Resource Management Plan

Plan Change 55

Submissions received by Marlborough District Council

December 2009

Table of Contents

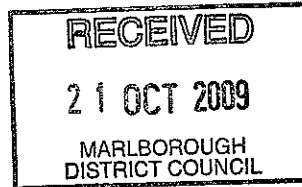
Alphabetical index of Submitters (by surname) for Plan Change 55

Numerical index of Submitters for Plan Change 55

Robin Cox
5 Regent Place
Blenheim

19th October 2009

Marlborough District Council
P O Box 443
Blenheim.



Plan Change 55. Wairau/Awatere Resource Management Plan .

I support the amendments to the Historic Schedules in the Wairau/Awatere Resource Management Plan by,

1. The addition of the Historic Places Trust Category 1 registered building the original Pilots House at the Wairau Bar.
- 2..Amending the legal descriptions of the Leefield buildings.

The Leefield buildings have been registered by the Historic Places and have been on the schedule of the Management plan for a considerable period. For these buildings the amendments are minor and are the result of a changed legal description to the land. This amendment will not result in any additional protection or hardship to the owner.

The addition of the Pilots House to the schedule is certainly a gain for the protection of heritage in Marlborough. From the time the building was officially rediscovered when the demolition of the second pilots house was sought, numerous organizations have worked with the owners, to ensure its protection and interpretation. Among the organizations that have been involved are; Marlborough District Council, Department of Conservation, Marlborough Historic Society, Marlborough Branch and the regional office of the Historic Places Trust and local Iwi. The Council must be commended for providing funds to;

1. Undertake a geomagnetic survey of the area around the house.
2. Allow the purchase and return of an original mooring buoy back to the bar.
3. Remove the gum tree limbs that were a threat the Pilots House.
4. Provide a security system.
5. Construct a fence to define the private land of the Orchard/Heffer families.

The land owners, the Orchard and Heffer families are most supportive and they are very willing to allow the public on to their land. Supportive landowners has been the reason this project has been so successful.

The only down side of this process has been the almost accidental rediscovery and valuing of this iconic site. The Wairau Bar area must be worth protection as an historic precinct as it has so much value to both European and Maori. Rather than rely on accidents it would seem so much better for Marlborough to be surveyed for heritage sites in a similar way to the successful Significant Natural Area Programme.

Plan Change 17, Marlborough Sounds Resource Management Plan.

I support the proposed changes to the Marlborough Sounds Resource Management Plan by;

1. The addition of two argillite Quarry sites and the correct siting of others on the planning maps.
2. The addition of the Historic Places Trust category 1 registered buildings that make up the Lead light system to Tory Channel.

Most of the new historical sites being added to the Management Plans are on public land so the threat to them by development was minimal. It should be noted that the reason they are being added to the schedules of the regional plan is as a result of the Historic Places Trust identifying and registering them rather than part of a Marlborough wide Historic survey.

It is great to see significant historic sites being added to the Management Plan schedules, however it may be more cost effective to undertake historic surveys over portions of the district and then notify them all at once rather than the present ad hoc approach of relying on Historic Places Trust to register them first and then reacting. The Marlborough Branch of the Historic Places Trust has already placed a plaque on the Lead lights and the pilots house and has arranged public visits to both these sites. From the interest shown on these trips it would appear that with the proper identification and interpretation of historic sites, they could add to the visitor's experience of the province and provide economic benefit.

Thank you for the opportunity to comment.

Robin Cox.





Patron:
His Excellency The Honourable
Sir Anand Satyanand, GNZM, QSO
Governor-General of New Zealand

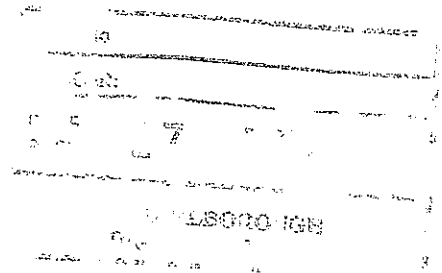
20.10.09

33002-092

Marlborough District Council
PO Box 443,
Blenheim 7240,
New Zealand.

Attention: Mark Cladwell

Tena koe



**Submission of New Zealand Historic Places Trust Pouhere Taonga to
Marlborough District Council Plan Change – 55 and 17 – Heritage
Buildings, Places and Sites.**

This is a submission on proposed plan change 55 and 17 – Heritage buildings, places and sites of the Marlborough District Council Plan. The New Zealand Historic Places Trust's (NZHPT) submission relates to historic heritage matters of the Proposed Plan Change, with particular regard to those matters important to historic heritage.

The NZHPT is supportive of the plan change.

The NZHPT seeks the following decision from the local authority:



Council adopts the plan change as notified.

The reasons for the NZHPT's position are as follows:

Plan change 55 and 17 seeks to add new listings to an existing schedule of historic heritage in appendix A of the Register of Significant Heritage Resources and update existing listings in the Marlborough sounds and Wairau/Awatere resource management plans. All of the sites proposed to list in the district plan are registered historic places under the New Zealand historic places act. They have been identified as historic heritage of national significance. The proposed new listings of the Pilots house on the

Wairoa river, the additions to the Opararpara Argillite quarries of the Plateau and West Pelorus Quarry's and the Tory channel Lead lights and oil store building, possess a variety of historic heritage values and are worthy of protection under the district plan.

Heritage schedules are an important method of providing a list of significant historic heritage in district plans. The central purpose of a heritage schedule is to provide information about specific places that are protected by the rules in the district plan. It is often the case that the public expects 'listed' places to be protected and listing in a district plan can provide statutory protection for category I and II registered historic heritage (under the Historic Places Act).

Section 74(2)(b)(iia) of the RMA contains an explicit requirement for Councils to have regard to any relevant entry in the Historic Places Register. The Register contains four categories: historic places, historic areas, wahi tapu and wahi tapu areas. The NZHPT may enter any historic place or historic area in the Register if the place or area possesses aesthetic, archaeological, architectural, cultural, historical, scientific, social, spiritual, technological or traditional significance or value.¹ These values have close alignment to the definition of historic heritage under the RMA.

Local authorities are responsible for heritage schedules in their plans. They need to carefully assess all items proposed for listing in the schedules, with criteria based on, but not limited to, the definition of historic heritage under the RMA. Recommended criteria for assessing historic heritage values include physical, historic and cultural considerations being (but not limited to); Archaeological, Architecture, technology, scientific, rarity, representativeness, integrity, vulnerability, context or group, people, events, patterns, identity, public esteem, Commemorative, education, Tangata Whenua and Statutory recognition. It should be noted that the criteria are not mutually exclusive. Some heritage places possess a range of values that overlap with each other. For example, the archaeological and historical values of a place both relate to information about the past and may be closely intertwined. Other heritage places may be strongly associated with just one particular value.

The proposed new listings of the Pilots house on the Wairoa river, the additions to the Opararpara Argillite quarries of the Plateau and West Pelorus Quarry's and the Tory channel Lead lights and oil store building possess a variety of historic heritage values and are worthy of protection under the district plan. These places possess a range of values as described in the section 32 report by Council, including Archaeological, technology, scientific, rarity, representativeness, people, patterns and importance to Tangata Whenua. As such, the NZHPT supports the listing of these important historic places in the district plan.

¹ Sec 23(1) Historic Places Act 1993

The NZHPT seeks the following decision from the local authority:



Council adopts the plan change as notified.

The NZHPT does not to be heard in support of our submission.

Yours faithfully,

A. E. Neill

Ann Neill

General Manager Central Region,

New Zealand Historic Places Trust *Pouhere Taonga*

Address for service:

Sacha Gilbert, Heritage Adviser - Planning

New Zealand Historic Places Trust - Pouhere Taonga

PO Box 19173, Wellington

Ph (04) 801-5088, DDI (04) 802-0001

Fax (04) 802-5180

Email: sgilbert@historic.org.nz

Alphabetical index of Submitters (by surname) for Plan Change 55

PartNo	Submitter	Address
1	Cox Robin	5 Regent Place, Blenheim 7201
2	New Zealand Historic Places Trust (Sacha Gilbert)	Heritage Advisor – Planning PO Box 17173 Wellington 6149

Numerical index of Submitters for Plan Change 55

PartNo	Submitter	Address
1	Cox Robin	5 Regent Place, Blenheim 7201
2	New Zealand Historic Places Trust (Sacha Gilbert)	Heritage Advisor – Planning PO Box 17173 Wellington 6149

Amendments	

\\nca...O:\Admin\T-Z\W045\15\55\PC55-Heritage Buildings Places Site-Submissions.doc Saved 08/12/2009 08:36:00