



Wairau/Awatere Resource Management Plan

Plan Change 56

Submissions received by Marlborough District Council

December 2009

Table of Contents

Alphabetical index of Submitters (by surname) for Plan Variation #

Numerical index of Submitters for Plan Variation #

SUBMISSION

To Marlborough District Council

Heritage Trees

This submission refers to:

Proposed Plan Change #08: Marlborough Sounds Resource Management Plan Heritage Tree Update;

and

Proposed Plan Change #56: Wairau/Awatere Resource Management Plan Heritage Tree Update.

This submission contains 22 pages (excluding maps).

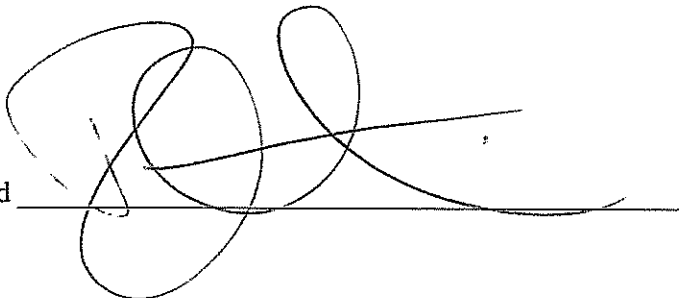
Submission made by –

Robert Hutchinson

Reserves Officer

Marlborough District Council

Signed _____

A large, stylized handwritten signature in black ink, consisting of several loops and a long horizontal stroke at the end, written over a horizontal line.

I wish to be heard in support of my submissions.

This part of my submission relates to:

Appendix B of the Plan Change to the Wairau/Awatere Resource Management Plan

Volume 2: Appendix A Register of Significant Heritage Resources

Heritage Schedule/Planning Map Notation #: 16 and 18 associated with **22 Weld Street, Blenheim.**

I oppose this part of the Plan Change.

My reasons for opposing this part of the plan change are:

The Proposed Plan Change provides that there are four Oak trees and four Walnut trees located on site. However this is a typographic error, and there is only one Oak and one Walnut tree located on site, which were protected through the pre notification Plan text. Therefore, the pre-notification Heritage Schedule Plan text stands as correct.

The decision I seek from Council is:

1. That the incorrect Plan text be deleted, as identified below:

16.	Quercus robur	22 Weld Street, Blenheim	Oak <u>(4)</u>	<u>293b</u>
18.	Juglans regia	22 Weld Street, Blenheim	Walnut <u>(4)</u>	<u>293d</u>

2. That the Planning Map for 22 Weld Street be amended to remove reference to the number 4 associated with Planning Map notation #18.

This part of my submission relates to:

Appendix B of the Plan Change to the Wairau/Awatere Resource Management Plan

Volume 2: Appendix A Register of Significant Heritage Resources

Planning Map Notation #: 160, 161, 162, 163 associated with **Langley Dale, Northbank**.

I support (in part) this part of the Plan Change.

My reasons for supporting this part of the plan change are:

1. The heritage trees proposed for protection meet the criteria for selection for heritage trees, as provided in Volume 1 of the Wairau/Awatere Resource Management Plan;
2. However, following the notification of the Plan Change, it has come to light that the proposed heritage tree #162 – Horse Chestnut, was cut down a number of years ago and no longer exists.
3. The Planning Maps are incorrect, with trees numbered 160, 161, 162 and 163 all being shown to be located on Pt Lot 1 DP 1683, however are actually located on Pt Sec 3 Blk 1 Wairau District.

The decision I seek from Council is:

1. That heritage tree listing # 162 is deleted from the schedule and the associated Planning Map.
2. That Planning Map Page 161 is amended to accurately show the location of heritage tree numbers 160, 161 and 163 (see attached map).

Tree Numbers 160 - 163 are shown in the wrong position.
New Positions shown.

Tree 162 has been removed.



Wairau / Awatere Resource Management Plan
Proposed Plan Change - Proposed Addition of Heritage Tree

- Proposed Heritage Tree Location
- ▲ Staff Submission Data Change
- Parcel
- Road

This part of my submission relates to:

Appendix B of the Plan Change to the Wairau/Awatere Resource Management Plan

Volume 2: Appendix A Register of Significant Heritage Resources

Planning Map Notation #: 153, 154 associated with **Spring Terrace**

I support (in part) this part of the Plan Change.

My reasons for supporting this part of the plan change are:

1. The heritage trees proposed for protection meets the criteria for selection for heritage trees, as provided in Volume 1 of the Wairau/Awatere Resource Management Plan;
2. However, due to a typographical error, heritage tree numbers 153 and 154 have been recorded incorrectly within the heritage schedule, showing an inaccurate number of trees associated with each listing; and
3. Due to the typographical error, Planning Map Page #134 similarly shows an incorrect number of trees as being located on the site.

The decision I seek from Council is:

1. To amend the heritage schedule to reflect the accurate number of proposed heritage trees on site, as follows:

<u>153</u>	<u>Sequoiadendron giganteum</u>	<u>Spring Terrace, SH6</u>	<u>Wellingtonia-(3) (2)</u>	<u>312b</u>
<u>154</u>	<u>Eucalyptus globulus</u>	<u>Spring Terrace, SH6</u>	<u>Tasmanian blue gum (3)</u>	<u>312a</u>

2. To amend the Planning Map Page 134 to accurately reflect the correct number of heritage trees on site (see attached).

Incorrect data was used in the original map for this site
Corrected data is now shown.



Wairau / Awatere Resource Management Plan
Proposed Plan Change - Proposed Addition of Heritage Tree

- Proposed Heritage Tree Location
- ▲ Staff Submission Data Change
- Parcel
- Road

This part of my submission relates to:

Appendix B of the Plan Change to the **Wairau/Awatere Resource Management Plan**

Volume 2: Appendix A Register of Significant Heritage Resources

Planning Map Notation #: 140,141 associated with **Rapaura Road, Spring Creek Holiday Park.**

I support (in part) this part of the Plan Change.

My reasons for supporting (in part) this part of the plan change are:

1. The heritage tree proposed for protection meets the criteria for selection for heritage trees, as provided in Volume 1 of the Wairau/Awatere Resource Management Plan;
2. However, there is a typographical error in the heritage schedule that requires amendment.
3. The associated Planning Map Pages 140 and 141 show an inaccurate number of heritage trees being located on site.

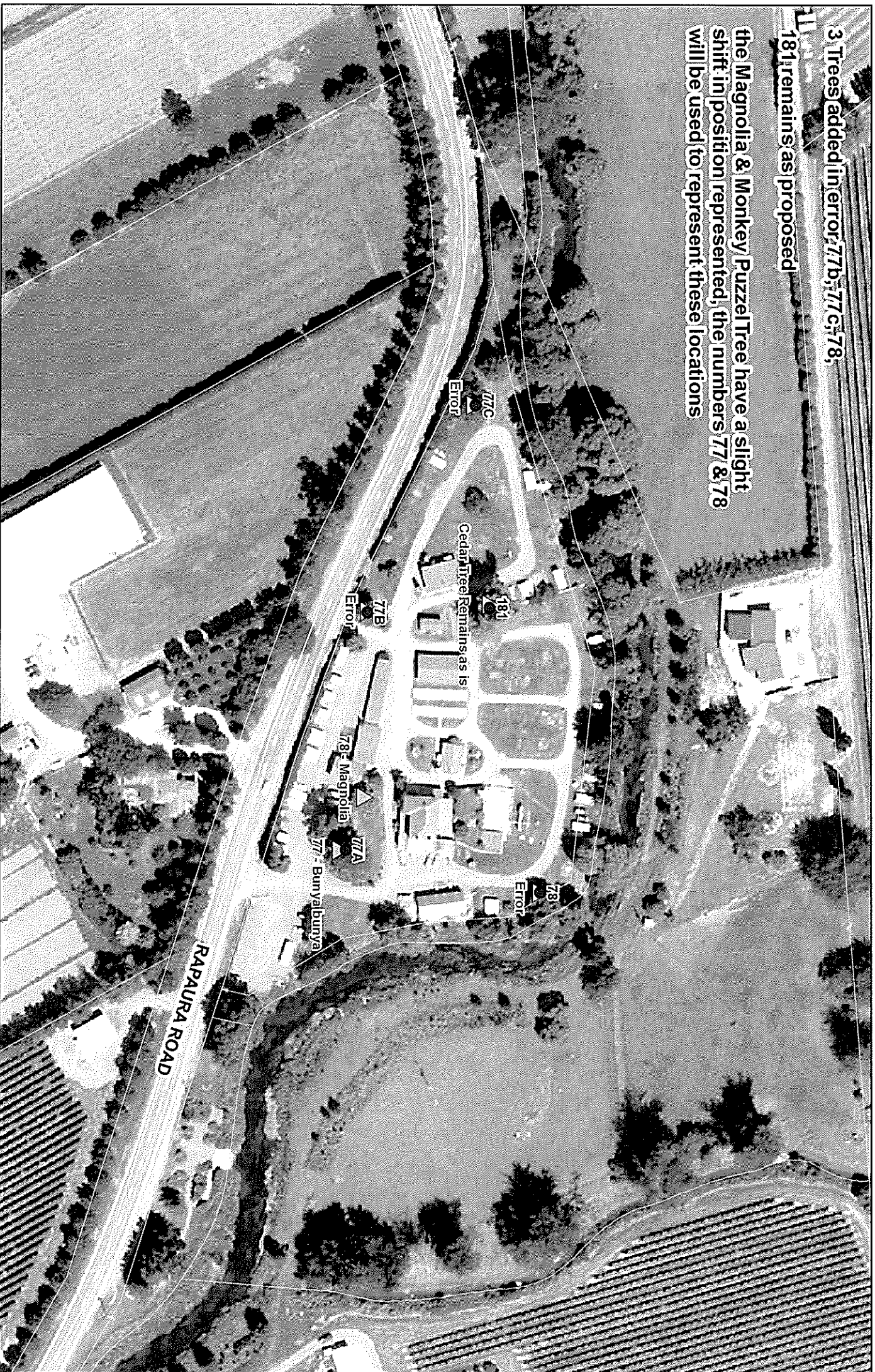
The decision I seek from Council is:

1. To amend the heritage tree schedule listing number 77, to refer to heritage tree number 181 in brackets as opposed to number 166, as identified in the text below:

77.	Araucaria bidwillii (see also 466181)	Spring Creek Holiday Park, Rapaura Road	Bunya bunya	<u>197</u>
-----	--	--	-------------	------------

2. To amend the associated Planning Maps to show the correct number of heritage trees on site (as identified on the attached map).

3 Trees added in error; 77b, 77c, 78,
181 remains as proposed
the Magnolia & Monkey Puzzle Tree have a slight
shift in position represented, the numbers 77 & 78
will be used to represent these locations



Wairau / Awatere Resource Management Plan
Proposed Plan Change - Proposed Addition of Heritage Tree

This part of my submission relates to:

Appendix B of the Plan Change to the **Wairau/Awatere Resource Management Plan**

Volume 2: Appendix A Register of Significant Heritage Resources

Planning Map Notation/Heritage Tree #: 26, 28, 30, 31, 32, 169, 170 associated with **80 Nelson Street, Blenheim.**

I support (in part) this part of the Plan Change.

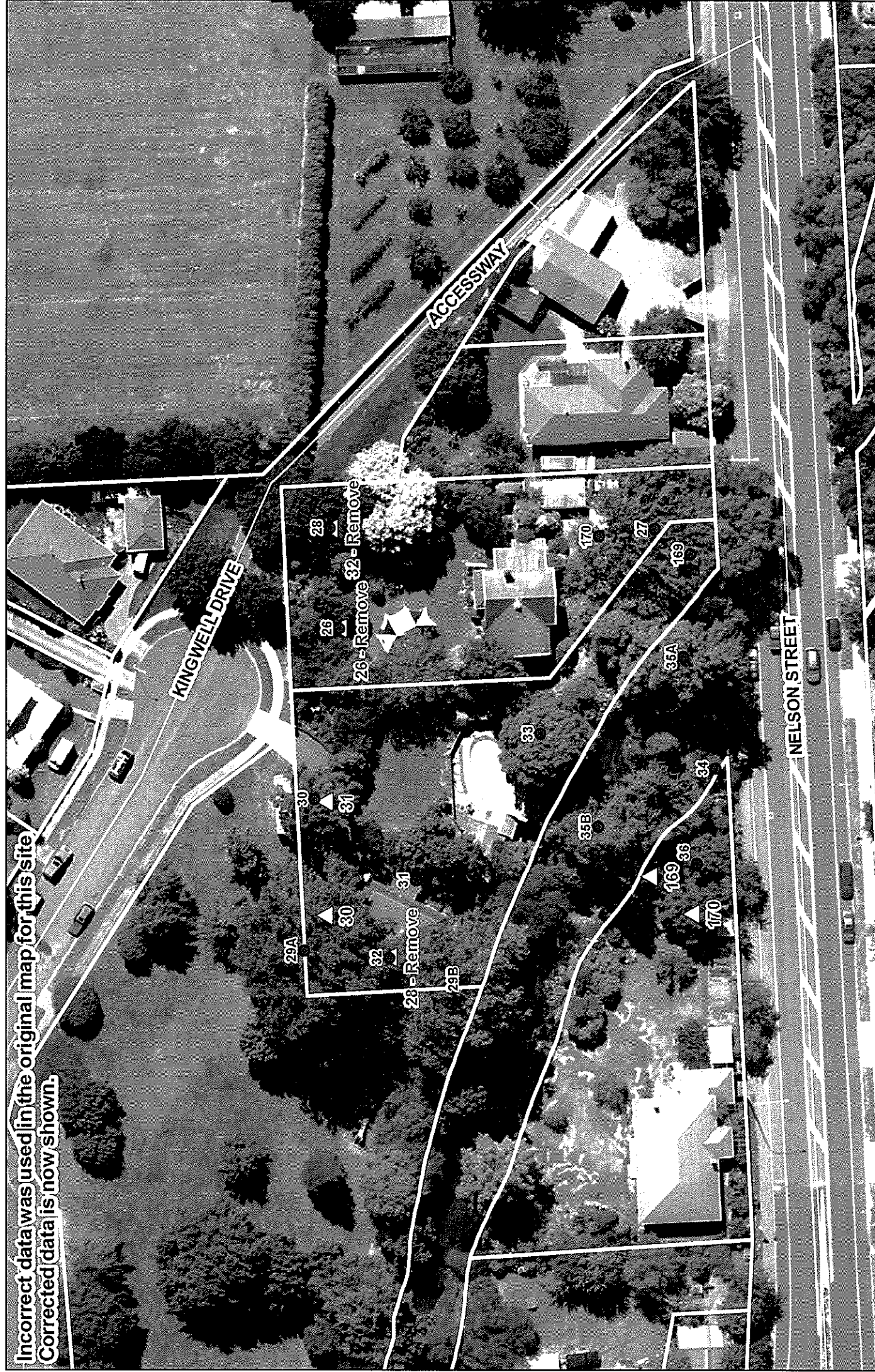
My reasons for supporting (in part) this part of the plan change are:

1. The heritage trees proposed for protection meet the criteria for selection as a heritage tree, as provided in Volume 1 of the Wairau/Awatere Resource Management Plan;
2. However, due to errors that occurred in the GPS recording of tree numbers 30, 31, 169, 170 are incorrectly depicted on the associated Planning Map (Map Page 157), and therefore their locations require amendment.
3. Further, Trees numbered 26, 28 and 32 no longer meet the criteria for Plan protection and have been removed from the Heritage Tree Register. Therefore their removal is subsequently required from the Planning Maps.

The decision I seek from Council is:

1. To amend the associated Planning Maps to show the correct location of heritage trees on site (as identified on the attached map).

Incorrect data was used in the original map for this site.
 Corrected data is now shown.



Wairau / Awatere Resource Management Plan
Proposed Plan Change - Proposed Addition of Heritage Tree

- Proposed Heritage Tree Location
- △ Staff Submission Data Change
- Road
- Parcel