

**This part of my submission relates to:**

Appendix B of the Plan Change to the **Wairau/Awatere Resource Management Plan**

Volume 2: Appendix A Register of Significant Heritage Resources

Planning Map Notation/Heritage Tree #: 164 associated with **Nelson Street, Road Reserve.**

**I support (in part)** this part of the Plan Change.

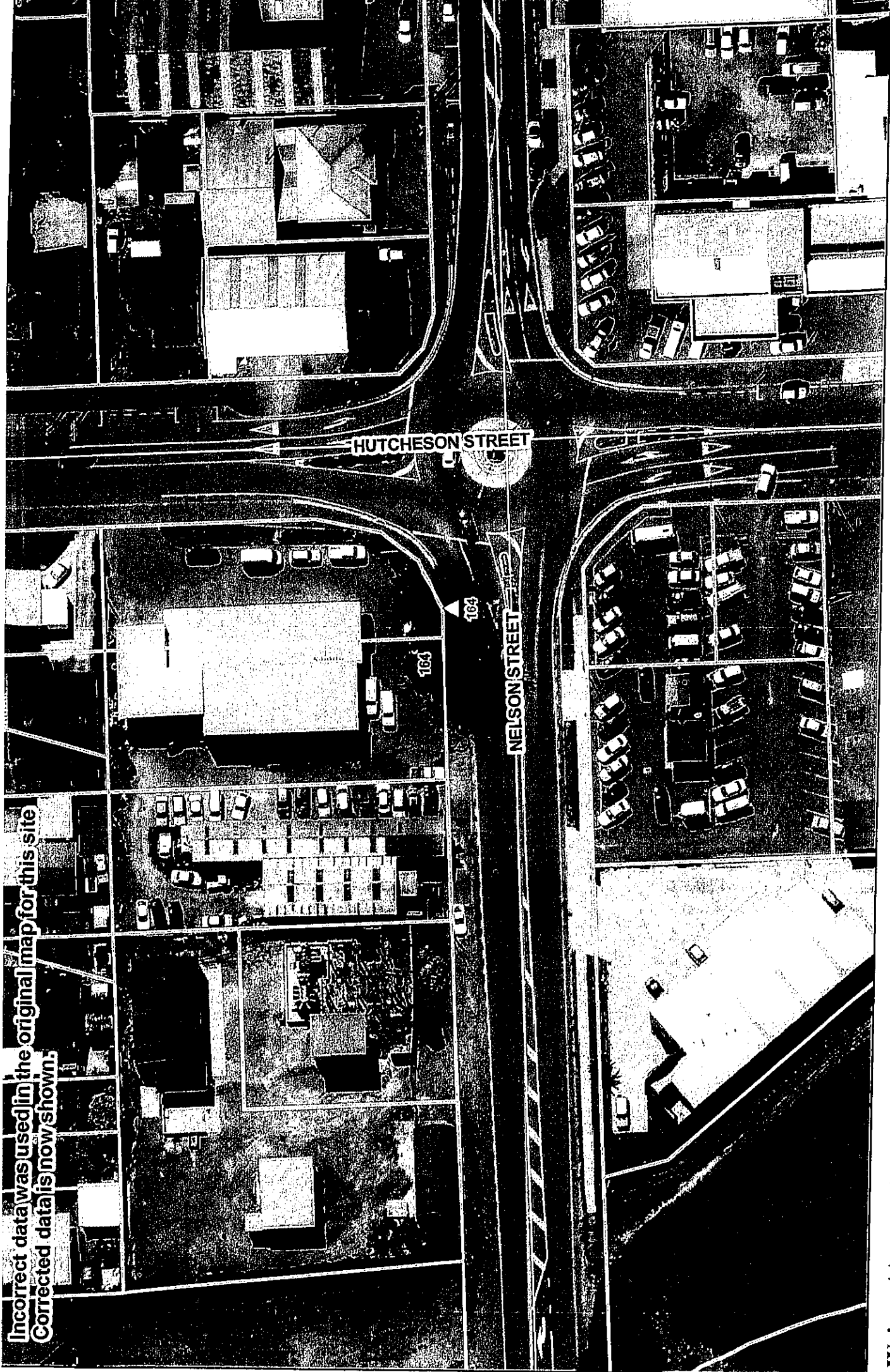
My reasons for supporting (in part) this part of the plan change are:

1. The heritage tree proposed for protection meets the criteria for selection as a heritage tree, as provided in Volume 1 of the Wairau/Awatere Resource Management Plan.
2. However, due to an error that occurred in the GPS recording of tree number 164, it is incorrectly depicted on the associated Planning Map (Map Page 158), and therefore require amendment.

**The decision I seek from Council is:**

1. To amend the associated Planning Map to show the correct location heritage tree number 164 (as identified on the attached map).

Incorrect data was used in the original map for this site  
Corrected data is now shown.



**Wairau / Awatere Resource Management Plan  
Proposed Plan Change - Proposed Addition of Heritage Tree**

- Proposed Heritage Tree Location
- △ Staff Submission Data Change
- Road
- Parcel

**This part of my submission relates to:**

Appendix B of the Plan Change to the **Wairau/Awatere Resource Management Plan**

Volume 2: Appendix A Register of Significant Heritage Resources

Planning Map Notation/Heritage Tree #: 139 associated with **Marlborough Boys College**.

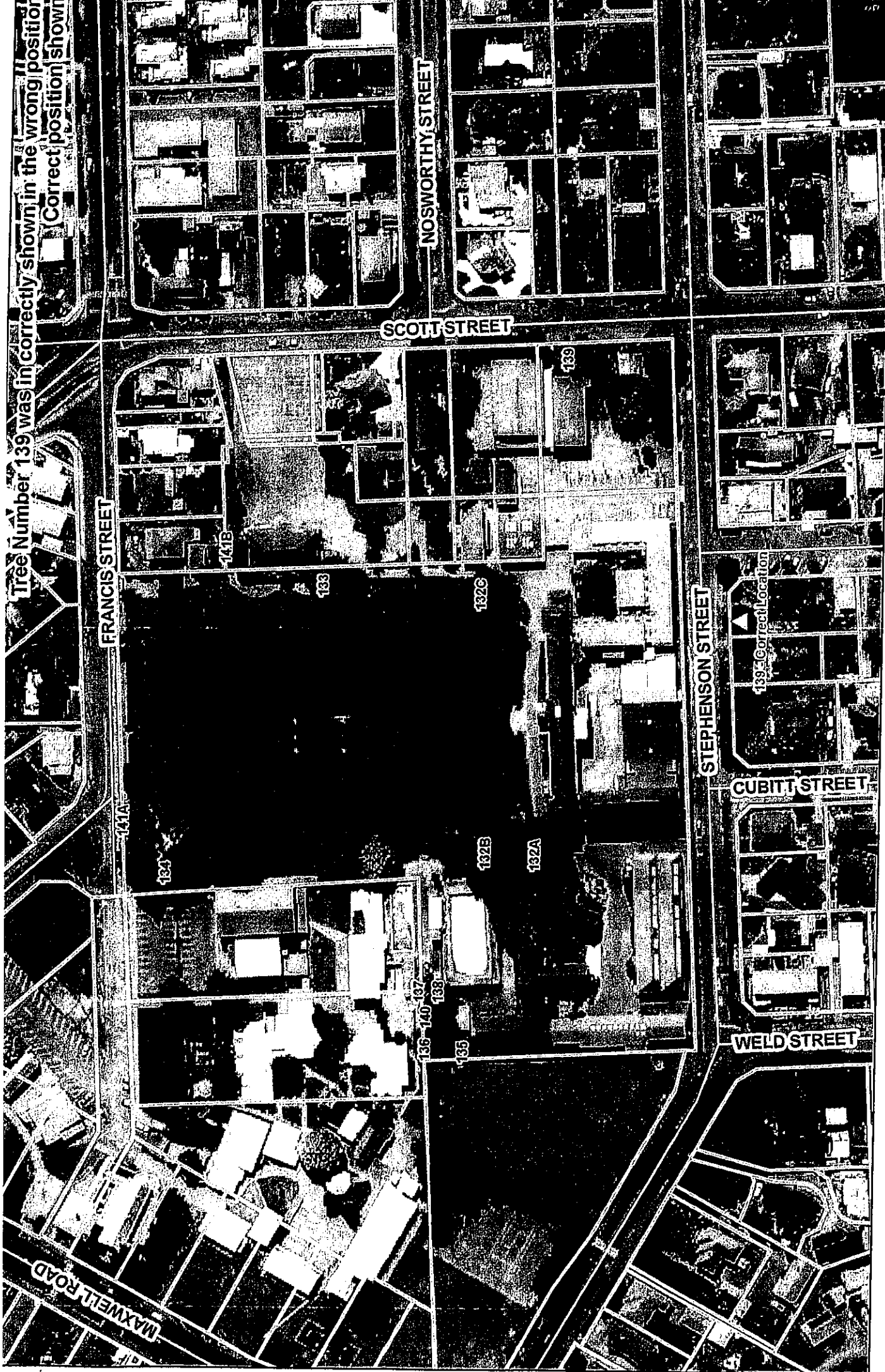
**I support (in part)** this part of the Plan Change.

My reasons for supporting (in part) this part of the plan change are:

1. The heritage tree proposed for protection meets the criteria for selection as a heritage tree, as provided in Volume 1 of the Wairau/Awatere Resource Management Plan.
2. However, due to errors that occurred in the GPS recording of tree number 139, it is incorrectly depicted on the associated Planning Map (Map Page 161, 162), and therefore requires amendment.

**The decision I seek from Council is:**

1. To amend the associated Planning Map to show the correct location heritage tree number 139 (as identified on the attached map).



Tree Number 139 was in correctly shown in the wrong position  
Correct position shown

Wairau / Awatere Resource Management Plan  
Proposed Plan Change - Proposed Addition of Heritage Tree

- Proposed Heritage Tree Location
- △ Staff Submission Data Change

**This part of my submission relates to:**

Appendix B of the Plan Change to the **Wairau/Awatere Resource Management Plan**

Volume 2: Appendix A Register of Significant Heritage Resources

Planning Map Notation/Heritage Tree #: 34, 37, 50, and 77 associated with **Plan text**.

I request amendments associated with Planning Map Notation/Heritage Tree numbers 34, 37, 50, and 77.

Reasons for the amendment request:

1. Due to a numbering error that occurred during the drafting of the Plan text, the Plan text in brackets associated with Tree numbers 34, 37, 50, and 77, which refers the reader to other sections of the plan, is incorrect and therefore requires amendment.

**The decision I seek from Council is:**

1. To amend the Plan text provided in brackets located under the Name of each tree associated with Planning Map Notation/Heritage Tree numbers 34, 37, 50, and 77, and provide the correct reference information associated with each of the relevant heritage tree listings. The requested Plan text is as follows:
  - Planning Map Notation/Heritage Tree number 34 – (~~see also 154—155~~ see also 169-170)
  - Planning Map Notation/Heritage Tree number 37 - (~~see also 156—157~~ see also 171-172)
  - Planning Map Notation/Heritage Tree number 50 - (~~see also 158-161~~, see also 173-175)
  - Planning Map Notation/Heritage Tree number 77 - (~~see also 166~~, see also 181)

**This part of my submission relates to:**

Appendix B of the Plan Change to the **Wairau/Awatere Resource Management Plan**

Volume 2: Appendix A Register of Significant Heritage Resources

Planning Map Notation/Heritage Tree #: 83 associated with **82A Lakings Road**

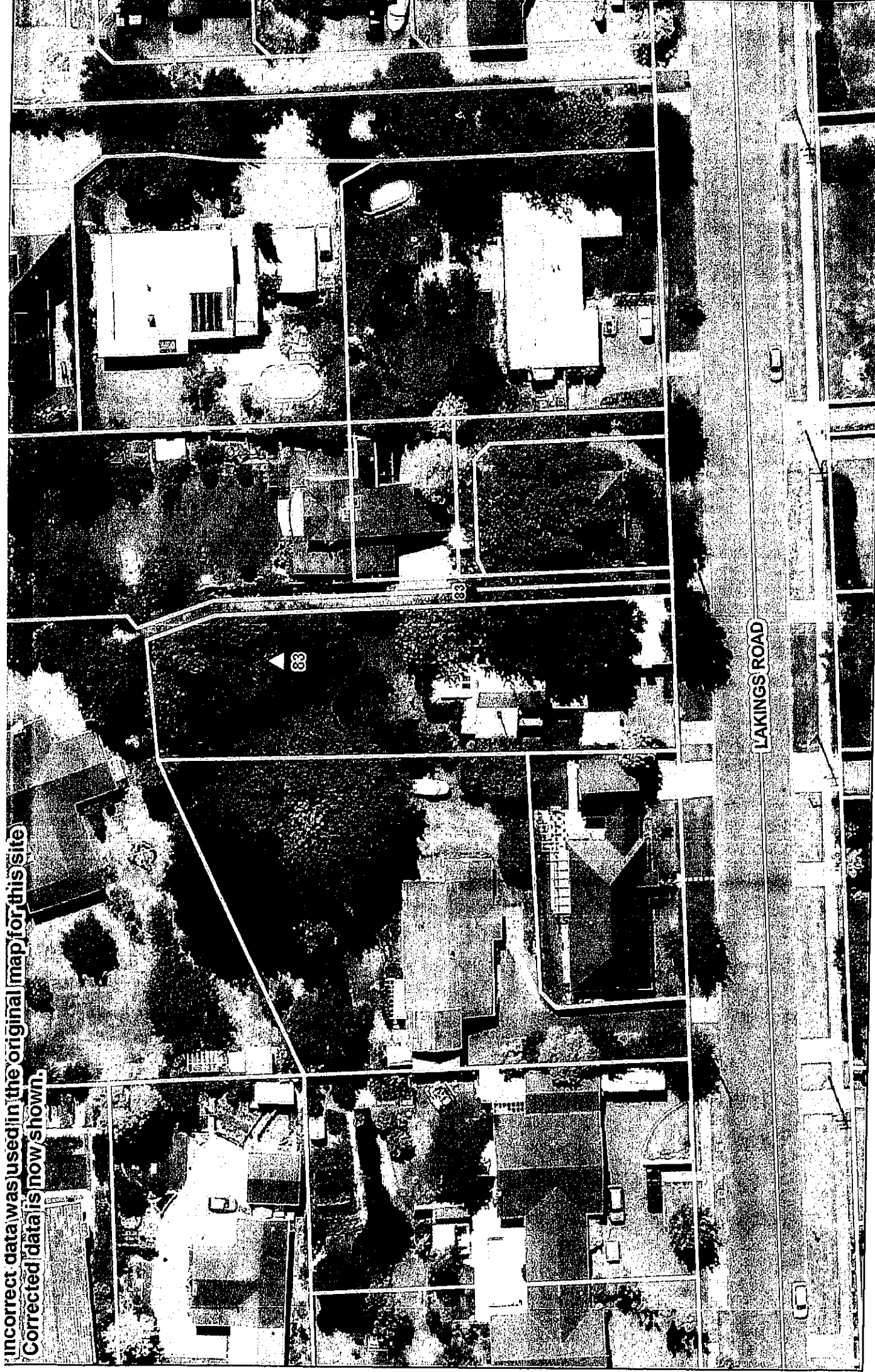
I request an additional **amendment** to the Planning Maps to show the correct location of Planning Map Notation/Heritage Tree number 83.

1. Due to an error that occurred in the GPS mapping of three number 83, it is incorrectly depicted on the associated Planning Map (Map Page 160), and therefore its location requires amendment.

**The decision I seek from Council is:**

1. To amend the associated Planning Map to show the correct location heritage tree # 83 (as identified on the attached map).

Incorrect data was used in the original map for this site.  
Corrected data is now shown.



**Wairau / Awatere Resource Management Plan  
Proposed Plan Change - Proposed Addition of Heritage Tree**

- Proposed Heritage Tree Location
  - △ Staff Submission Data Change
- Road  
Parcel

**This part of my submission relates to:**

Appendix A of the Plan Change to the **Marlborough Sounds Resource Management Plan**

Volume 2: Appendix A Register of Significant Heritage Resources

and

Appendix B of the Plan Change to the **Wairau/Awatere Resource Management Plan**

Volume 2: Appendix A Register of Significant Heritage Resources

I request an additional **amendment** to the Plan text of the preamble to the Heritage Tree Register as contained in Appendix A of the Marlborough Sounds Resource Management Plan and Appendix A of the Wairau/Awatere Resource Management Plan, to further explain the system of heritage tree notation on the associated Planning Maps.

My reason for requesting this **amendment** to these parts of the plan change is:

1. Where multiple trees of the same species are identified on the Planning Maps, they are delineated on the maps using alphabetical numbering. For example, Planning Notation/Heritage Tree number 132 as contained in the Wairau/Awatere Resource Management Plan shows there are three Oak trees located on site, as depicted by 'Oak (3)' in the register. The corresponding Planning Map Pages 161 and 162, will subsequently depict these trees as being 132A, 132B and 132 C. However, the Plan text does not currently explain this alphabetical numbering system, which may confuse Plan users. The provision of additional Plan text explaining this notation system may therefore provide clarity to Plan users.

**The decision I seek from Council is:**

1. For the additional Plan text to be added under the title of heading 'Heritage Trees' as contained in Appendix A of each Plan.
  - *Note: Where multiple trees of the same species are located on the same allotment, they are annotated using alphabetical numbering on the corresponding Planning Map.*



**This part of my submission relates to:**

**The Marlborough Sounds Resource Management Plan**

Volume 3/3A: Planning Maps

and

**The Wairau/Awatere Resource Management Plan**

Volume 3: Planning Maps

I request an additional **amendment** to all the proposed Planning Maps that are subject to amendment within the Proposed Heritage Trees Plan Changes.

My reason for requesting this **amendment** to these maps is:

The proposed Planning Maps (as notified) include text and symbols intended to assist the reader in understanding the proposed map changes. It was not intended that these symbols or the additional map text be reproduced within the final version of the Planning Maps.

**The decision I seek from Council is:**

For the additional map text and symbols, used to illustrate proposed changes to the Planning Maps, be removed prior to final Plan map production.

Submission Form for Plan Changes 8, 56, 17 and 55 to the  
**Wairau/Awatere & Marlborough Sounds  
 Resource Management Plans**  
**Heritage Plan Changes**

Name/Organisation

Peter Leslie Family Trust

Contact Name  
 (if different from above)

Peter Leslie

Address for  
 Service

44 Murrays Road  
 RD3, Blenheim  
 03 5705552

Phone Number

021 387541

Fax Number

03 5705467

I have attached ☒ pages to this submission

Do you wish to be heard in support  
 of your submission?

YES



NO



If you wish to be heard & others make a similar submission,  
 would you be prepared to consider  
 presenting a joint case?

YES



NO



Signature

*[Signature]*

Date

20/10/09

**How To Make A Submission**

Anyone is welcome to make a submission, either as an individual or on behalf of an organisation. You may use this form or prepare your own submission so long as you are careful to provide all of the information identified on this form. (These information requirements are per Form 5 of the Resource Management (Forms, Fees and Procedures) Regulations 2003). If you run out of room here, please continue on a separate page. When preparing your submission you need to include the following:

**"This part of my submission relates to..."** - state the name of the plan change and the part(s) of the plan change that is/are the subject of your submission.

**"I support (or oppose) this part of the plan change..."** - state whether you support or oppose (in full or part).

**"My reasons for supporting (or opposing) this part of the plan change..."** - tell us what your concerns are and the reasons why you support or oppose the provisions in the plan change.

**"The decision I seek from the Council is..."** - How do you want the Council to respond to your submission? It is very important that you clearly state the decision you wish the Council to make as the Council cannot make changes which have not been specifically requested. Start by indicating if you want the provision to be retained, deleted or amended. If you want an amendment (including additional provisions) then specify what wording changes you would like to see.

**REMEMBER - the clearer you can be, the easier it will be for the Council to understand your concerns and take them into account.**

Office Use

Participant No.

Submission Point No.

File Refs

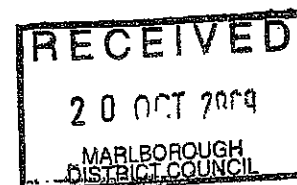
W045-15-56

W045-15-55

M135-15-8

M13-15-17

Date Received Stamp



Submissions Close:

5.00 pm Friday

23 October 2009

Return your submission to:

Marlborough District Council  
 PO Box 443

Blenheim 7240

Attention: Mark Caldwell

Fax: (03) 520 7496

E-Mail:

heritage@marlborough.govt.nz



Plan change 56

We have no problem with some London Plan trees being listed as being protected, we would like to come to a compromise due to the following circumstances and wish to advise that some of the trees are problematic due to shading the dwelling next to the trees. This property is also still awaiting Resource Consent which is still pending an appeal. We had been advised that no alterations to the trees or property (re: trees removed, pruned etc) while under this process. The reason we purchased this property was to relocate a Spring Creek business we own. When we did a title search on the property including the trees on the property in 2007 there was no mention of any notable trees.

Submission Form for Plan Changes 8, 56, 17 and 55 to the

# Wairau/Awatere & Marlborough Sounds Resource Management Plans

## Heritage Plan Changes

Name/Organisation

TrustPower Ltd

Contact Name  
(If different from above)

Laura Reddie

Address for  
Service:

Private Bag 12023  
Tauranga Mail Centre  
Tauranga 3143

Phone Number

(07) 574 4888 ex 4304

Fax Number

(07) 574 4777

I have attached **3** pages to this submissionDo you wish to be heard in support  
of your submission?

YES



NO

If you wish to be heard & others make a similar submission,  
would you be prepared to consider  
presenting a joint case?

YES



NO



Signature:

Reddie

Date:

21/10/09

Office Use

Participant No.

Submission Point No.

File Refs

W045-15-56

W045-15-55

M135-15-8

M13-15-17

Date Received Stamp

RECEIVED

27 OCT 2009

MARLBOROUGH

DISTRICT COUNCIL

Submissions Close:

5.00 pm Friday

23 October 2009

Return your submission to:

Marlborough District Council  
PO Box 443

Blenheim 7240

Attention: Mark Caldwell

Fax: (03) 520 7496

E-Mail:

heritage@marlborough.govt.nz

### How To Make A Submission

Anyone is welcome to make a submission, either as an individual or on behalf of an organisation. You may use this form or prepare your own submission so long as you are careful to provide all of the information identified on this form. [These information requirements are per Form 5 of the Resource Management (Forms, Fees and Procedures) Regulations 2003]. If you run out of room here, please continue on a separate page. When preparing your submission you need to include the following:

"This part of my submission relates to ..." - state the name of the plan change and the part(s) of the plan change that is/are the subject of your submission.

"I support (or oppose) this part of the plan change." - state whether you support or oppose (in full or part).

"My reasons for supporting (or opposing) this part of the plan change ..." - tell us what your concerns are and the reasons why you support or oppose the provisions in the plan change.

"The decision I seek from the Council is ..." - How do you want the Council to respond to your submission? It is very important that you clearly state the decision you wish the Council to make as the Council cannot make changes which have not been specifically requested. Start by indicating if you want the provision to be retained, deleted or amended. If you want an amendment (including additional provisions) then specify what wording changes you would like to see.

**REMEMBER** - the clearer you can be, the easier it will be for the Council to understand your concerns and take them into account.

**SUBMISSION ON PROPOSED PLAN CHANGE 56 – HERITAGE TREE UPDATE  
UNDER CLAUSE SIX OF THE FIRST SCHEDULE TO THE RESOURCE  
MANAGEMENT ACT 1991**

**To:** Marlborough District Council  
P O Box 443  
**BLLENHEIM 7240**

Attention: Environmental Policy Team

**Name:** TrustPower Limited

**Address:** Private Bag 12023  
Tauranga

**TrustPower Limited (TrustPower) wishes to make a submission on Proposed Plan Change 56 relating to the heritage tree update to the Wairau/Awatere Resource Management Plan.**

- 1. The specific provision of the proposed plan change that TrustPower's submission relates to is:**

The entirety of Plan Change 56.

- 2. TrustPower's interest in Plan Change 56.**

TrustPower commenced its electricity generation activities in 1925 and has since grown to become one of New Zealand's largest electricity retailers, serving just under a quarter of a million customers throughout the country and relying wholly on renewable energy generation. TrustPower's generation assets consist of 34 small to medium sized generation stations strategically located around New Zealand to ensure power is generated close to where it is consumed.

TrustPower currently operates two schemes in the Marlborough District and more particularly in the Wairau Plain. The first is the Waihopai power station, which first supplied power to Blenheim in 1927 and was subsequently expanded to meet growing demand in 1930, 1937 and 1996, increasing the original output capacity from 1,000kw to 2,500kw. The second is the Branch Power Scheme, a scheme in which water passes first through the Argyle Power Station and is then carried by a 3385m canal to the Wairau Power Station. The output capacity at the Argyle Power Station is 3,800kw and the output at the Wairau Power Station is 7,200kw.

TrustPower is also in the advanced stages of proposing a new hydro scheme in the Wairau Valley. It would be an extension of the Branch hydropower scheme, diverting part of the Wairau River flow into the existing Branch scheme and

channelling the water through interconnecting canals and penstocks to six new power stations spaced down the Wairau Valley. The new canal intake will be 2.5km upstream of the Branch River.

The scheme includes the construction of approximately 46km of open conveyance, including canals, tailraces, sediment basins and regulation ponds and would generate about 367GWh of electricity annually to power the Nelson-Marlborough region, with one of the five power stations feeding directly into the Blenheim system. TrustPower is proposing the Wairau Valley Hydroelectric Power Scheme to meet the increased and future demand for electricity in the Marlborough/Tasman Region and to make the Region more self-sufficient in electricity supply by reducing its dependence on the National Grid and generation facilities located outside the Region.

With the above in mind, TrustPower is interested in how Plan Change 56 amends the regulatory framework and environmental overlays that apply or could potentially apply to the site for the Wairau Hydroelectric Power Scheme.

### **3. TrustPower's specific submission on Plan Change 56:**

Plan Change 56 seeks to update the Heritage Tree Register contained in the Wairau Awatere Resource Management Plan. The plan change recognises that significant trees are one form of heritage resource that can help create sense of place within a community.

There are no heritage trees identified as being within the footprint of the proposed Wairau Hydroelectric Power Scheme. TrustPower supports this and seeks that this remains the case throughout the Plan Change process. As outlined above the Wairau Hydroelectric Power Scheme is an important renewable energy development for the region and this should be taken into account when developing the register of heritage trees.

TrustPower would oppose the protection of any heritage trees within the footprint of the proposed scheme. Effects on heritage and ecological values associated with the construction and development of the scheme have been thoroughly considered as part of the application and hearing process. This assessment has not identified any trees within the site that are necessary of protection for heritage reasons.

Should consent be granted for the development of the scheme, TrustPower submits that any attempt to protect trees within the envelope of the scheme at this late stage would be to frustrate its construction by tying it up in an additional consenting process. As these trees have not been recognised as being worthy of protection throughout the current hearing process for the scheme, TrustPower submits that this would not represent sound resource management practice and would not promote sustainable development.

4. **TrustPower wishes to be heard in support of their submission.**
5. **If others make a similar submission, Trustpower would be prepared to consider presenting a joint case with them at any hearing.**

**Signature:**



TrustPower Limited

By its authorised agent Laura Peddie, for and on behalf of  
TrustPower Limited

**Date:**

21<sup>st</sup> October 2009

**Address for service:**

TrustPower Limited  
Private Bag 12023  
Tauranga  
Attn: Laura Peddie

**Telephone:**

(07) 574 4888 ext 4304

**Facsimile:**

(07) 574 4877



Submission Form for Plan Changes 8, 56, 17 and 55 to the

# Wairau/Awatere & Marlborough Sounds Resource Management Plans

## Heritage Plan Changes

Name/Organisation:

Richard + Simon Adams

Contact Name  
(If different from above):Address for  
Service:Langley Dale  
1034 Northbank Rd  
RDS  
Blenheim

Phone Number:

03 57 29 221

Fax Number:

I have attached 2 pages to this submissionDo you wish to be heard in support  
of your submission?

YES



NO

If you wish to be heard & others make a similar submission,  
would you be prepared to consider  
presenting a joint case?

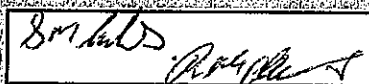
YES



NO



Signature:



Date:

23-10-09

Office Use

Participant No.

Submission Point No.

File Refs

W045-15-56

W045-15-55

M135-15-8

M13-15-17

Date Received Stamp

RECEIVED

23 OCT 2009

MARLBOROUGH  
DISTRICT COUNCIL

Submissions Close:

5.00 pm Friday

23 October 2009

Return your submission to:

Marlborough District Council  
PO Box 443

Blenheim 7240

Attention: Mark Caldwell

Fax: (03) 520 7496

E-Mail:

[heritage@marlborough.govt.nz](mailto:heritage@marlborough.govt.nz)

### How To Make A Submission

Anyone is welcome to make a submission, either as an individual or on behalf of an organisation. You may use this form or prepare your own submission so long as you are careful to provide all of the information identified on this form. [These information requirements are per Form 5 of the Resource Management (Forms, Fees and Procedures) Regulations 2003]. If you run out of room here, please continue on a separate page. When preparing your submission you need to include the following:

"This part of my submission relates to ..." - state the name of the plan change and the part(s) of the plan change that is/are the subject of your submission.

"I support (or oppose) this part of the plan change." - state whether you support or oppose (in full or part).

"My reasons for supporting (or opposing) this part of the plan change ..." - tell us what your concerns are and the reasons why you support or oppose the provisions in the plan change.

"The decision I seek from the Council is ..." - How do you want the Council to respond to your submission? It is very important that you clearly state the decision you wish the Council to make as the Council cannot make changes which have not been specifically requested. Start by indicating if you want the provision to be retained, deleted or amended. If you want an amendment (including additional provisions) then specify what wording changes you would like to see.

**REMEMBER** - the clearer you can be, the easier it will be for the Council to understand your concerns and take them into account.

Please indicate the plan change(s) that your submission relates to:

~~Plan Change 8 (Heritage Trees) to the Marlborough Sounds Resource Management Plan~~

Plan Change 56 (Heritage Trees) to the Wairau/Awatere Resource Management Plan

~~Plan Change 17 (Heritage Resources) to the Marlborough Sounds Resource Management Plan~~

~~Plan Change 55 (Heritage Resources) to the Wairau/Awatere Resource Management Plan~~

If you wish to provide a submission for more than one of the plan changes, you can use the same form so long as you clearly indicate which plan change your comments relate to.

Any submission received by the Council is considered to be public information.

<b>Plan Change No. Volume, Section of Plan, Page Number</b>	<b>Details of your submission and specific changes or decisions requested</b>
<i>Example:</i> Plan Change 8 New policy 1.9	<i>Example:</i> I oppose this policy because... I would like the Council to change wording of this policy to "suggest change"
	See attached pages.

# Submission to Proposed Plan Change #56

## Planning Map Notation/tree number 160. GUM

We support this Heritage Listing.

We realise this tree is of significant historic importance to our family and the Marlborough Province, dating from the creation of the Marlborough Province 150 years ago.

As this tree regularly drops dead branches we need to make the existing main farm roadway which passes under it safe, for vehicles, animals & humans.

We will need to trim branches and new shoots as necessary and would appreciate any council help maintaining this tree.

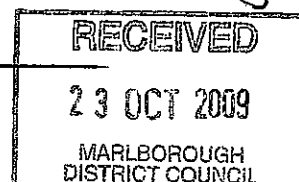
## Planning Map Notation/tree number 161. Oak tree.

We wish to remove this tree from the schedule at this point in time.

We may need to secure access past this tree to the eastern part of the farm, this being the only access point thru a narrow gap between the hill and the back of the old homestead.

While this is an attractive tree it is not the only Oak on the farm. There are at least a dozen trees of the same type, similar age and size on the farm.

①



Sinh  
RML

Planning Map Notation/tree number 162. Horse Chestnut

We wish to remove this tree from the schedule, because it is dead.

---

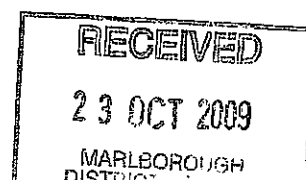
Planning Map Notation/tree number 163. Sweet Chestnut

We wish to remove this tree from the schedule.

The Council Arborist looked at the tree and agreed with us that it is in poor health.

Its condition looks the same as two other sweet chestnut trees on the farm which eventually died.

---



*Smh  
RMD*

Submission Form for Plan Changes 8, 56, 17 and 55 to the  
**Wairau/Awatere & Marlborough Sounds  
 Resource Management Plans  
 Heritage Plan Changes**

FRANCES MATHER.

2. GLEN HILL DR.

BLenheim.

021 886462 03 5776756



F. D. M. L.

5-10-09.

**Office Use**

Participant No.

Submission Point No.

**File Refs**

W045-15-56

W045-15-55

M135-15-8

M13-15-17

**Date Received Stamp**

**RECEIVED**

**05 OCT 2009**

**MARLBOROUGH  
DISTRICT COUNCIL**

**Submissions Close:**

**5.00 pm Friday**

**23 October 2009**

**Return your submission to:**

**Marlborough District Council  
PO Box 443**

**Blenheim 7240**

**Attention: Mark Caldwell**

**Fax: (03) 520 7496**

**E-Mail:**

**heritage@marlborough.govt.nz**

**How To Make A Submission**

Anyone is welcome to make a submission, either as an individual or on behalf of an organisation. You may use this form or prepare your own submission so long as you are careful to provide all of the information identified on this form. [These information requirements are per Form 5 of the Resource Management (Forms, Fees and Procedures) Regulations 2003]. If you run out of room here, please continue on a separate page. When preparing your submission you need to include the following:

**"This part of my submission relates to ..."** - state the name of the plan change and the part(s) of the plan change that is/are the subject of your submission.

**"I support (or oppose) this part of the plan change."** - state whether you support or oppose (in full or part).

**"My reasons for supporting (or opposing) this part of the plan change ..."** - tell us what your concerns are and the reasons why you support or oppose the provisions in the plan change.

**"The decision I seek from the Council is ..."** - How do you want the Council to respond to your submission? It is very important that you clearly state the decision you wish the Council to make as the Council cannot make changes which have not been specifically requested. Start by indicating if you want the provision to be retained, deleted or amended. If you want an amendment (including additional provisions) then specify what wording changes you would like to see.

**REMEMBER - the clearer you can be, the easier it will be for the Council to understand your concerns and take them into account.**

Any submission received by the Council is considered to be public information.

iii.

Submission Form for Plan Changes 8, 56, 17 and 55 to the  
**Wairau/Awatere & Marlborough Sounds  
 Resource Management Plans**  
**Heritage Plan Changes**

Name/Organisation

Kevin &amp; Marilyn O'Donnell

Contact Name  
(if different from above)Address for  
Service17 High Street  
Renwick

Phone Number

03 572 5330

Fax Number

Have you heard?



Do you wish to be heard in support

of your submission?



No



Do you wish to be heard in opposition

to your submission?



No



Signature

m. O'Donnell

Office Use

Participant No.

Submission Point No.

File Refs

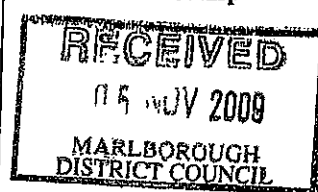
W045-15-56

W045-15-55

M135-15-8

M13-15-17

Date Received Stamp



Submissions Close:

5.00 pm Friday

23 October 2009

Return your submission to:

Marlborough District Council  
PO Box 443

Blenheim 7240

Attention: Mark Caldwell

Fax: (03) 520 7496

E-Mail:

[heritage@marlborough.govt.nz](mailto:heritage@marlborough.govt.nz)

### How To Make A Submission

Anyone is welcome to make a submission, either as an individual or on behalf of an organisation. You may use this form or prepare your own submission so long as you are careful to provide all of the information identified on this form. [These information requirements are per Form 5 of the Resource Management (Forms, Fees and Procedures) Regulations 2003]. If you run out of room here, please continue on a separate page. When preparing your submission you need to include the following:

**"This part of my submission relates to ..."** - state the name of the plan change and the part(s) of the plan change that is/are the subject of your submission.

**"I support (or oppose) this part of the plan change."** - state whether you support or oppose (in full or part).

**"My reasons for supporting (or opposing) this part of the plan change ..."** - tell us what your concerns are and the reasons why you support or oppose the provisions in the plan change.

**"The decision I seek from the Council is ..."** - How do you want the Council to respond to your submission? It is very important that you clearly state the decision you wish the Council to make as the Council cannot make changes which have not been specifically requested. Start by indicating if you want the provision to be retained, deleted or amended. If you want an amendment (including additional provisions) then specify what wording changes you would like to see.

**REMEMBER - the clearer you can be, the easier it will be for the Council to understand your concerns and take them into account.**

## Plan Change 55 (Heritage Resources) to the Wairau/Awatere Resource Management Plan

Any submission received by the Council is considered to be public information.

\\pqa. .O:\Admin\T-2\W\145\15\6\Heritage-Submission Form-MC.doc Saved 09/09/2009 10:48:00



Map Page 135.

Tree no 123. ?

17 High St.  
Renwick

Please accept late submission.  
To whom It May Concern.

My husband and I live at  
17 High Street.  
Renwick

Outside our house on the corner of  
High Street and Pictou Street is this  
very very huge Cottonwood poplar  
tree.

We would like this tree removed because

- 1 It takes all the sun from our house in the winter.
- 2 It fills our guttering up with its leaves, which we are having to clean out all the time
- 3 It makes the main road into Renwick look extremely untidy. As it causes a huge mess on the Road, the footpath, and all over our property when its leaves drop

We have done all we can do to insulate our home by putting batts in ceiling.

Under floor insulation.

A known fire installed  
Heat Transfer kit installed.

And without any sun in the winter we are just battling uphill.

We have spent alot of money on trying to keep warm and keep the house from getting damp

The government is also offering grants/loans for insulation. They are advertising

A Warm Home is a healthy home.

In the winter our house is certainly not a healthy home as it never sees any sun at all. As the tree is taken it all away.

Mr Francis Maher visited our house And sees this for himself.

I have been trying to get something done for 3 years with the tree written to Council.

Spoken to people in the Council. Written and spoke to Friends at Renwick Club.

Everyone just passes the buck

This time I would like action taken as we do not want another winter without sun in our well maintained loved home.

Maibao O'Donnell m O'Donnell.  
Keena O'Donnell - M.D. 11

**Wairau / Awatere Resource Management Plan**  
**Map change pursuant to the First Schedule of the**  
**Resource Management Act 1991.**

Map Page - 135

Schedule of Changes for Proposed Plan Change #56  
Zoning - Proposed addition of Heritage Tree

△ Site of Change  
--- Current WAMP Trees



105.	<u>Norus nigra</u>	<u>52 Percy Street, Blenheim</u>	<u>Mulberry</u>	
106.	<u>Psuedopanax lessonii hybrid</u>	<u>52 Percy Street, Blenheim</u>		
107.	<u>Prumnopitys ferruginea</u>	<u>52 Percy Street, Blenheim</u>	<u>Miro</u>	
108.	<u>Sophora prostrata</u>	<u>52 Percy Street, Blenheim</u>	<u>Prostrat kowhai</u>	
109.	<u>Podocarpus totara</u>	<u>52 Percy Street, Blenheim</u>	<u>Totara</u>	
110.	<u>Cordyline australis</u>	<u>52 Percy Street, Blenheim</u>	<u>Cabbage tree</u>	
111.	<u>Phyllocladus trichomanoides</u>	<u>52 Percy Street, Blenheim</u>	<u>Celery pine</u>	
112.	<u>Pseudopanax ferox</u>	<u>52 Percy Street, Blenheim</u>	<u>Fierce lancewood</u>	
113.	<u>Sophora microphylla</u>	<u>52 Percy Street, Blenheim</u>	<u>Kowhai (2)</u>	
114.	<u>Nothofagus solandri var cliffortioides</u>	<u>52 Percy Street, Blenheim</u>	<u>Mountain beech</u>	
115.	<u>Dacrydium cupressinum</u>	<u>52 Percy Street, Blenheim</u>	<u>Rimu (2)</u>	
116.	<u>Dacrycarpus dacrydioides</u>	<u>52 Percy Street, Blenheim</u>	<u>Kahikatea (3)</u>	
117.	<u>Nothofagus fusca</u>	<u>52 Percy Street, Blenheim</u>	<u>Red beech (2)</u>	
118.	<u>Podocarpus nivalis</u>	<u>52 Percy Street, Blenheim</u>	<u>Snow totara</u>	
119.	<u>Prumnopitys taxifolia</u>	<u>52 Percy Street, Blenheim</u>	<u>Matai</u>	
120.	<u>Nothofagus solandri</u>	<u>52 Percy Street, Blenheim</u>	<u>Black beech</u>	
121.	<u>Olearia paniculata</u>	<u>52 Percy Street, Blenheim</u>	<u>Akiraho</u>	
122.	<u>Podocarpus totara</u>	<u>5 Camerons Road, Okaramio RD1 Havelock</u>	<u>Totara (2)</u>	
123.	<u>Poplar deltoids</u>	<u>Road Reserve High Street Renwick</u>	<u>Cottonwood poplar</u>	
124.	<u>Sequoiadendron giganteum</u>	<u>Lansdowne 2641 Wairau Valley RD1 Blenheim</u>	<u>Wellingtonia (2)</u>	
125.	<u>Sequoia sempervirens</u>	<u>Lansdowne 2641 Wairau Valley RD1 Blenheim</u>	<u>Redwood</u>	
126.	<u>Cedrus deodara</u>	<u>Lansdowne 2641 Wairau Valley RD1 Blenheim</u>	<u>Himalayan cedar</u>	
127.	<u>Eucalyptus ficifolia</u>	<u>Tua Marina Cemetery Hill</u>	<u>Scarlet gum</u>	
128.	<u>Juglans regia</u>	<u>McKendry Park, Orchard Lane, Blenheim</u>	<u>Walnut (28)</u>	
129.	<u>Juglans regia franquette</u>	<u>McKendry Park, Orchard Lane, Blenheim</u>	<u>Walnut (5)</u>	
130.	<u>Fagus sylvatica</u>	<u>2A Poynter Street, Blenheim</u>	<u>Copper Beech</u>	
131.	<u>Eucalyptus ficifolia</u>	<u>36A Mowat Street, Blenheim</u>	<u>Scarlet gum</u>	
132.	<u>Quercus robur</u>	<u>Marlborough Boys College</u>	<u>Oak (3)</u>	<u>339, 340, 342</u>
133.	<u>Fagus sylvatica purpureum</u>	<u>Marlborough Boys College</u>	<u>Copper beech</u>	<u>341</u>
134.	<u>Aesculus hippocastanum</u>	<u>Marlborough Boys College</u>	<u>Horse chestnut</u>	<u>343</u>
135.	<u>Podocarpus totara</u>	<u>Marlborough Boys College</u>	<u>Totara</u>	
136.	<u>Sophora sp</u>	<u>Marlborough Boys College</u>	<u>Kowhai</u>	

Submission Form for Plan Changes 8, 56, 17 and 55 to the  
**Wairau/Awatere & Marlborough Sounds  
 Resource Management Plans**  
**Heritage Plan Changes**

Name/Organisation

Andrew Morgan

Contact Name  
(if different from above)Address for  
Service32 Weld Street  
Blenheim

Phone Number

5792334

Fax Number

I have attached ☐ pages to this submissionDo you wish to be heard in support  
of your submission?YES ☐NO ☒If you wish to be heard & others make a similar submission,  
would you be prepared to consider  
presenting a joint case?YES ☐NO ☒

Signature

Date

29.10.09

Office Use

Participant No.

Submission Point No.

File Refs

W045-15-56

W045-15-55

M135-15-8

M13-15-17

Date Received Stamp

RECEIVED

30 NOV 2009

MARLBOROUGH  
DISTRICT COUNCIL

Submissions Close:

5.00 pm Friday

23 October 2009

Return your submission to:

Marlborough District Council  
PO Box 443

Blenheim 7240

Attention: Mark Caldwell

Fax: (03) 520 7496

E-Mail:

[heritage@marlborough.govt.nz](mailto:heritage@marlborough.govt.nz)**How To Make A Submission**

Anyone is welcome to make a submission, either as an individual or on behalf of an organisation. You may use this form or prepare your own submission so long as you are careful to provide all of the information identified on this form. [These information requirements are per Form 5 of the Resource Management (Forms, Fees and Procedures) Regulations 2003]. If you run out of room here, please continue on a separate page. When preparing your submission you need to include the following:

**"This part of my submission relates to ..."** - state the name of the plan change and the part(s) of the plan change that is/are the subject of your submission.

**"I support (or oppose) this part of the plan change."** - state whether you support or oppose (in full or part)

**"My reasons for supporting (or opposing) this part of the plan change ..."** - tell us what your concerns are and the reasons why you support or oppose the provisions in the plan change.

**"The decision I seek from the Council is ..."** - How do you want the Council to respond to your submission? It is very important that you clearly state the decision you wish the Council to make as the Council cannot make changes which have not been specifically requested. Start by indicating if you want the provision to be retained, deleted or amended. If you want an amendment (including additional provisions) then specify what wording changes you would like to see.

**REMEMBER** - the clearer you can be, the easier it will be for the Council to understand your concerns and take them into account.

Any submission received by the Council is considered to be public information.

**Alphabetical index of Submitters (by surname) for Plan Change 56**

<b>PartNo</b>	<b>Submitter</b>	<b>Address</b>
6	Adams - Richard and Simon	Langley Dale 1034 Northbank Road RD 5 Blenheim 7275
1	Hutchinson - Robert	C/O MDC PO Box 443 Blenheim 7240
7	Maher - Frances	2 Glenhill Drive Blenheim
9	Morgan - Andrew	32 Weld Street Blenheim
8	O'Donnell - Kevin and Marilyn	Renwick
4	Peter Leslie Family Trust ( Peter Leslie)	44 Murrays Road RD 3 Blenheim 7273
5	TrustPower Limited ( Laura Peddie)	Private Bag 12023 Tauranga Mail Centre Tauranga 3143

## Alphabetical index of Submitters (by surname) for Plan Change 56

PartNo	Submitter	Address
6	Adams - Richard and Simon	Langley Dale 1034 Northbank Road RD 5 Blenheim 7275
1	Hutchinson - Robert	C/O MDC PO Box 443 Blenheim 7240
7	Maher - Frances	2 Glenhill Drive Blenheim
9	Morgan - Andrew	32 Weld Street Blenheim
8	O'Donnell - Kevin and Marilyn	Renwick
4	Peter Leslie Family Trust ( Peter Leslie)	44 Murrays Road RD 3 Blenheim 7273
5	TrustPower Limited ( Laura Peddie)	Private Bag 12023 Tauranga Mail Centre Tauranga 3143



## Numerical index of Submitters for Plan Change 56

PartNo	Submitter	Address
1	Hutchinson - Robert	C/O MDC PO Box 443 Blenheim 7240
4	Peter Leslie Family Trust ( Peter Leslie)	44 Murrays Road RD 3 Blenheim 7273
5	TrustPower Limited ( Laura Peddie)	Private Bag 12023 Tauranga Mail Centre Tauranga 3143
6	Adams - Richard and Simon	Langley Dale 1034 Northbank Road RD 5 Blenheim 7275
7	Maher - Frances	2 Glenhill Drive Blenheim
8	O'Donnell - Kevin and Marilyn	Renwick
9	Morgan - Andrew	32 Weld Street Blenheim

Amendments	

\\mca....O:\Admin\T-Z\W045\15\56\PC56-HeritageTrees-SubmissionsSummary.doc Saved 07/12/2009 11:16:00