



Omaka Marae Kura - Tamariki on the newly laid turf

**Information Update**  
**Assets & Services, Property and Community**  
**Facilities Department**  
**18 April 2023**

# Contents

<b>Marlborough Roads .....</b>	<b>1</b>
Local Road Asset Management Report – March 2023 .....	1
Project Status .....	3
Stakeholder and Communications Monthly Progress .....	11
Road Safety .....	12
Marlborough Roads Recovery Team Update – March 2023 .....	13
Construction Cost Summary .....	16
Programme .....	17
Construction Progress.....	18
Progress.....	19
Design and Consenting.....	20
Road Status Summary .....	20
Risk .....	21
Project controls .....	21
Financial.....	21
Quality .....	22
Photo Summary .....	22
<b>Rivers and Drainage Section – Activity Report.....</b>	<b>25</b>
Wairau River .....	25
Wairau Floodplain and Tributaries .....	27
Drainage.....	30
Floodway Reserves.....	30
Picton, Sounds and Awatere.....	31
Investigation and Miscellaneous .....	32
Gravel Extraction.....	32
Quarries .....	32
<b>Planning and Development Section .....</b>	<b>33</b>
Murphys Road Water Upgrade .....	33
Nelson Street Water Upgrade .....	33
Stuart Street Water Upgrade .....	33
Surrey Street Sewer Upgrade.....	33
<b>Services and Operations .....</b>	<b>34</b>
Education Report .....	34
<b>Parks and Open Spaces Activity Report .....</b>	<b>36</b>
Blenheim Parks .....	36
Picton Parks .....	41
Northern Marlborough/Sounds.....	44
District Cemeteries.....	44
Walking and cycling .....	45

Better Off Funding.....	46
Trees .....	47
Playgrounds .....	49
Policy and planning.....	50
Rangers' Report .....	50
Road Safety Coordinator Update.....	50
Access & Mobility Forum.....	52
<b>Property and Community Facilities Project Report.....</b>	<b>56</b>

## Local Road Asset Management Report – March 2023

(Information prepared by Amanda Smith)

R800-007-02

### General

Harvest has kicked off in Marlborough for 2023. The additional number of trucks, tractors, and harvesters on the road during this time is generally tolerated well by road users and hasn't caused a large increase in customer requests or complaints. Up until 31 March, there have been 23 spills from trucks carrying grapes, the majority of these being less than 10m<sup>3</sup>, seven spills being 10-100m<sup>3</sup> and one being larger than 100m<sup>3</sup>. These have all been managed well by the Contractor.

The Land Transport Activity Management Plan (AMP) for 2024-2027 is underway with the updating of our strategic business case. Forward works programmes for the upcoming financial year and the AMP period have been prepared and will form the programme business case component of the AMP.

The Network Outcomes Contract (NOC) has now been in place for three years. This anniversary marks the opportunity for the contractor to review the lump sum rates for the contract. A proposal for review of the Pavement Maintenance Lump Sum has been received and is currently under review. The decision from this process is to be submitted to the Contract Board by 31<sup>st</sup> May 2023.

Maintenance is currently underway on State Highway 1 at Wheelers Hill and this will be completed by Easter. There have been two crashes on this site on 23 and 27 March. The site had a traffic management plan in place. This was a single lane operation during the day under traffic signals. At night, the road was open to two lanes and subject to a 30km/hr temporary speed limit because of the uneven road surface. An inspection was undertaken by the Contractor during daylight immediately following the crash on the 23 March. There was no evidence to indicate that the worksite was a contributing factor to the crash. The crash on the 23 March has been referred to WorkSafe. Both incidents have been notified, as required, under the Code of Practice for Temporary Traffic Management (CoPTTM).

Changes to access for all vehicles using the ferry has been changed to Kent Street on Monday 3 April. There has been a lot of collaboration between all parties for this to be undertaken. This changeover has brought the condition of Kent Street into the media. This maintenance has been programmed to be undertaken but is predominantly due to the increase in heavy traffic due to the salt works rather than the IRex Project itself.

The impact of Cyclone Gabrielle on the North Island has led to an indicated change in focus for the Government Policy Statement. The indication is that the main focus will now be around resilience of our roading networks. This fits well with our current work in the region and will be the lead direction of our AMP.

As the weather starts to cool down, the renewals programme is close to completion and the focus will move to drainage maintenance in preparation for winter.

### Financial Commentary

With three months remaining in our financial year, our earlier indications of having an underspend across our budget are now clearer. Programmes for April – June have been put in place to make the most of this underspend and to bring forward works planned for the 2024-25 financial year where resourcing allows.

Work is underway to identify budgets and programmes for the 2023-24 financial year to ensure funding is utilised as efficiently and effectively as possible for the final year in our three-year funding window.

## NOC MONTHLY ACTIVITIES

### Summary from Contract Manager – Grant Bennett

Where is the year going?

Another successful renewals season all but completed with just a couple of stragglers to go. This season has proven interesting and challenging for a number of reasons some of which were unforeseen for example

- A much later than usual Grape harvest and above average crop numbers has put more pressure and demand on the wineries late in the season. Due to the floods up in Hawkes Bay/ Gisborne areas, also major Grape producers, the allocated transient worker numbers have headed for the Marlborough region to continue working.
- The ferry disruptions and cancellations.

The above has impacted on the available accommodation in the Marlborough area which has meant our out-of-town specialist delivery teams have had to adjust and be as flexible as possible around this to allow us to achieve the large renewals programme. A massive unrecognised background effort to make this happen.

The 3-year review has been submitted and a review process and timeline is the next step. This will allow a good reflection of the demands and investment required to maintain our network and generate some good proactive discussions and alignment.

Safety remains the focus on all activities our team undertakes, and of course the road user safety. The leadership actions and visibility out and about with the crews, and around the network, continues to prove a good proactive way to monitor.

The environmental team's guidance and advice has had a positive impact on the crews and on the everyday works being undertaken. Some of the crews have put forward some great ideas and environmental initiatives. One has gone on to win a HEB national environment award.

The OPM process continues to monitor and support the great work the team are doing. We had one small fly in the ointment in February where we slipped just outside of the perimeters of the SH audit. Due to the proven track record and great work around rectification and the way the team have raised this in line with our true values: **Trust and Collaboration, Honesty and Integrity, Stewardship**. We have highlighted the issue, rectified immediately and have been upfront. Due to the breach being largely duration points (which have since been resolved) and in the interest of constructively working with in the MAHI TAHI (working as One) Guide to benefit the network condition, I have asked for an exemption to waive the SH February deduction "At Risk Payment". We are waiting for review and decision.

Incidents and accidents on the network have been raised and a couple of escalation questions asked to ensure the right people are getting the right information at the right time. This escalation process is under review to ensure we get it right.

With a number of staff movements and change within the wider team highlights the importance of the wider support required to establish and bed the new team members into their roles and responsibilities. It also remains a priority to keep us all swimming in our lanes doing the key things well going back to Basics and growing the team as One Network One Team culture.

# Project Status

## State Highways

Area wide pavement rehabilitation at Wheelers Hill



**Fig. 1 - Wheelers Hill Rehabilitation site**



**Fig. 2 - Wheelers Hill Rehabilitation site**

## Local Roads

### Reseal programme update

Improvements to **Ugbrooke Road** have been undertaken by TC Nicholls and the road will be sealed following the completion of harvest. The initial plan was to have this road widened and sealed prior to harvest. Once on site, it was found that further works were required, and the team worked hard to get the road to a good but gravel state for the start of harvest. The extra traffic on this currently gravelled road over harvest will also help to identify any further soft spots so that maintenance work can be undertaken prior to the new seal going down.



Fig. 3 & 4 – Ugbrooke Road prior to works starting



Fig. 5 – 19 December progress



Fig. 6 & 7 – 26 January progress



Fig. 8 – 17 February completion of works prior to harvest

Gill Construction have completed work at **Upton Downs Road** to repair the slip that occurred from the August 2022 Storm event. The opportunity to extend the site slightly to complete some additional maintenance items was taken and a great result was achieved. Positive feedback from property owners in the area have been received.



Figs. 9 & 10 – Progress





**Fig. 11 & 12 – Work completed**

We have had a team carrying out maintenance on D’Urville Island. Councillor Innes, myself and Steven Bell were lucky enough to get a good day to go out, visit the team and take them a BBQ lunch. We got to meet some of the locals as well and not just the wildlife.



**Fig. 13 – Meeting some of the wildlife**



**Fig. 14 – Repaired slip at Elmslie Bay**



**Fig. 15 – Deformed Culvert on the Main Road**



**Fig. 16 – Historic slip on Woodmans Road**



**Fig. 17 – View of Rangitoto**



**Fig. 18 -Vegetation has been trimmed on French Pass Road to maintain sight lines**

## Marlborough Roads Activities

Auxillium consultants have been engaged to assist with the 2024-2027 Land Transport Activity Management Plan (AMP) as there hasn't been sufficient in house resource at this time. We have had a workshop around strategy and aligning identified recovery problems in with the rest of the network. This AMP will support our Regional Land Transport Plan.

A "Management of Unformed Legal Roads" policy is currently in development and will be delivered at the next Assets and Services Meeting. This policy will put in to writing the way in which unformed legal roads are currently dealt with by Marlborough Roads. Where legal roads are not formed, there will be no maintenance carried out. This will cover situations such as that shown below on Scotland Street in Picton.



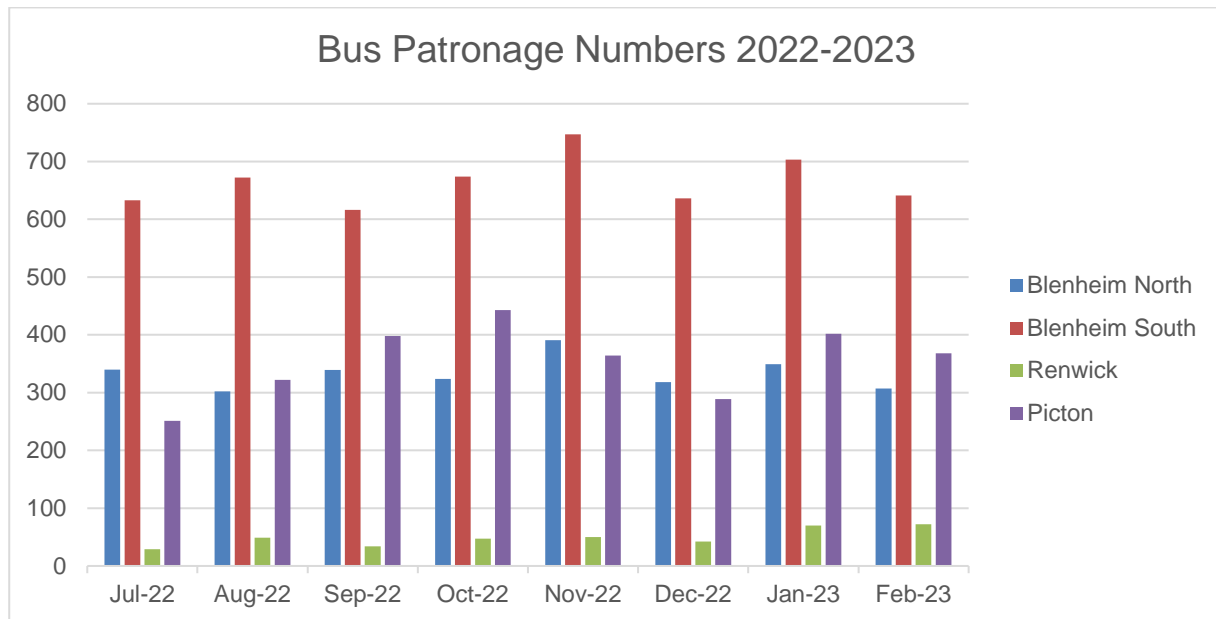
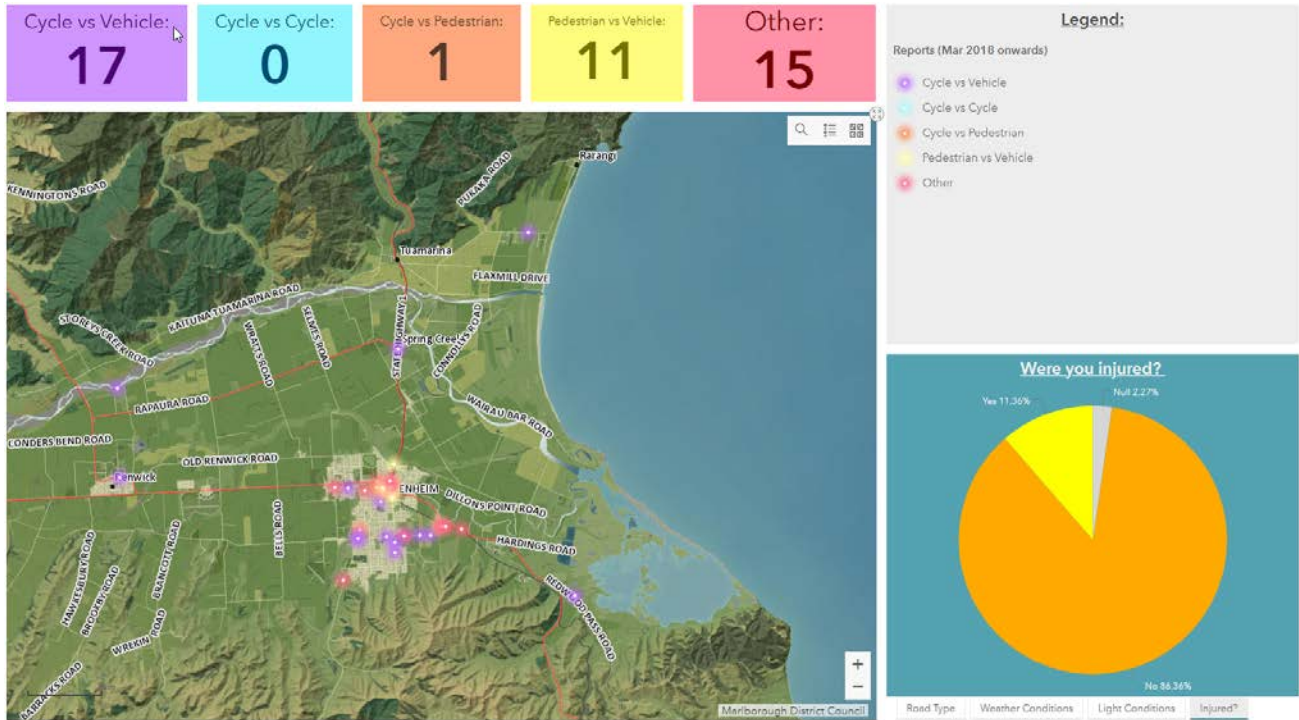
Fig. 19 – Scotland Street example of an area of unformed road

The NOC Reset work continues. We are focussing on establishing a robust programme to ensure that budgets are met in the upcoming 2023-24 financial year. If we are unable to resource all works through the NOC, packages will be agreed upon to take to the open market. Budgets for the NOC will be confirmed and progress will be reported against monthly.

Laura Skilton ran the Speed Management Workshop on 27-28 March. The two mornings were productive and had a great level of engagement from all in attendance. The next steps will be;

- Engagement with schools (letters and speed reduction areas)
- Finalise plan
- Seek approval for consultation in May Finance Meeting
- Public consultation
- Include in RLTP documentation.

### Bike/Walk Crash and Near Miss Dashboard – July 2022 to March 2023



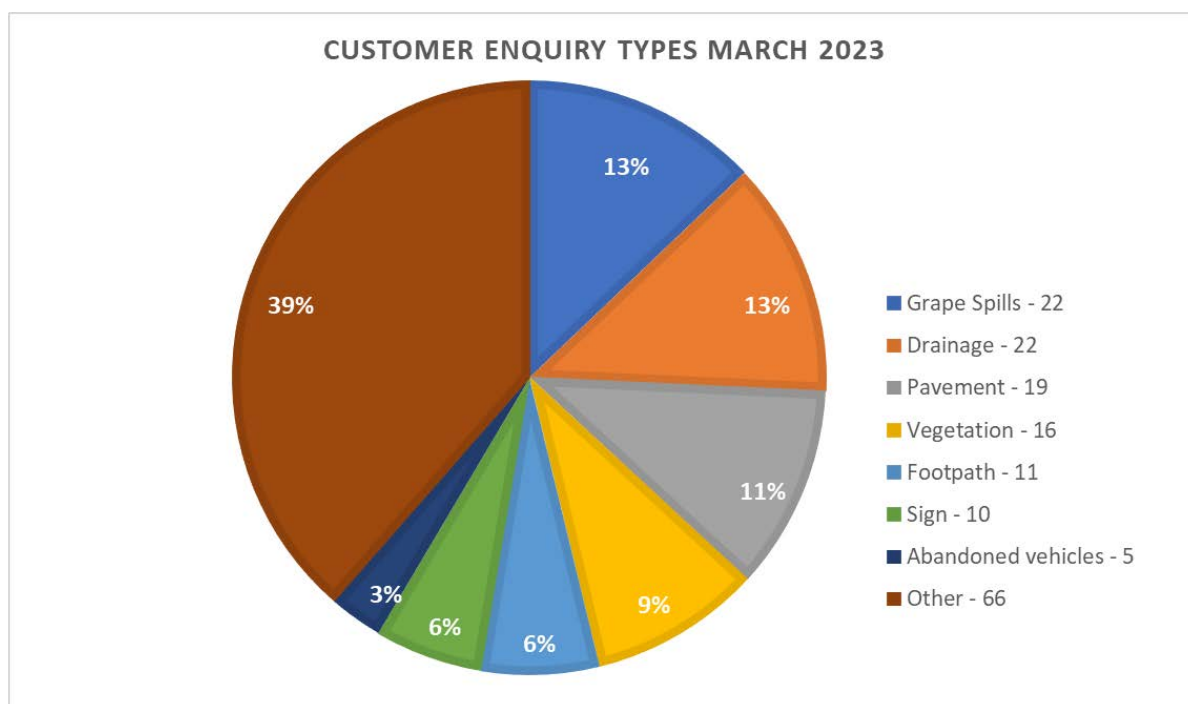
# Stakeholder and Communications Monthly Progress

## Summary from Communications Manager, Olivia Bowers-Galt

The total number of customer enquiries in March was 171 up from 106 CRMS in February. Enquiries were on par when compared with March 2022 with 168 CRMS. Of the 171 CRMs 85% were for local roads and 15% for State Highways, with 100% resolved.

The highest number of enquiries were for grape spills and drainage, both with 22 CRMS in March. Compared to March 2022 reported grape spills were down due to this time last year the majority of harvesting was completed however this year we are only 40% estimated total tonnage to harvest.

Please note, descriptions are as per CRMS categories.



Four complaints were received in March regarding;

- Noise during night works
- Kent Street road condition
- Detour for SH6 Woodbourne single lane closure
- Speed Limit on SH62 needing to be lowered

All complaints have been dealt with appropriately in the first instance, within required response times.

Three compliments were received in March, all regarding grading on Northbank, Hospital and Awatere Valley Roads. The latter customer also complimented the works undertaken since the July 2021 and August 2022 weather events.

Ten customer call backs were completed in March. The average score was 4.5 (with one being very poor and 5 being very good) for the level of service received by the MR Team. Four of the ten calls gave five out of five and all responding they were happy with the customer service. Of the lower scores, the customers were wanting to see the problem they had called about fixed.

The quarterly CBD cleaning survey was undertaken in March with ten calls to Blenheim and five to Picton businesses. The average score for Blenheim was 1.85 and Picton was 1.8 from a score of 1 to 4, 1 being

very good and 4 being bad. The higher score for Blenheim related to glass from the weekend and Picton noted some rubbish being around.

All items of concern from the customer call backs and CBD cleaning survey have been forwarded to relevant parties. There were 14 letterbox drops undertaken in March to 967 residents and 17 road alerts/Antenno sent for planned works.

## Road Safety

**Monthly Summary from Network and Road Safety Manager. Details and trend information is included in the Quarterly reporting.**

### State Highway Crash summary:

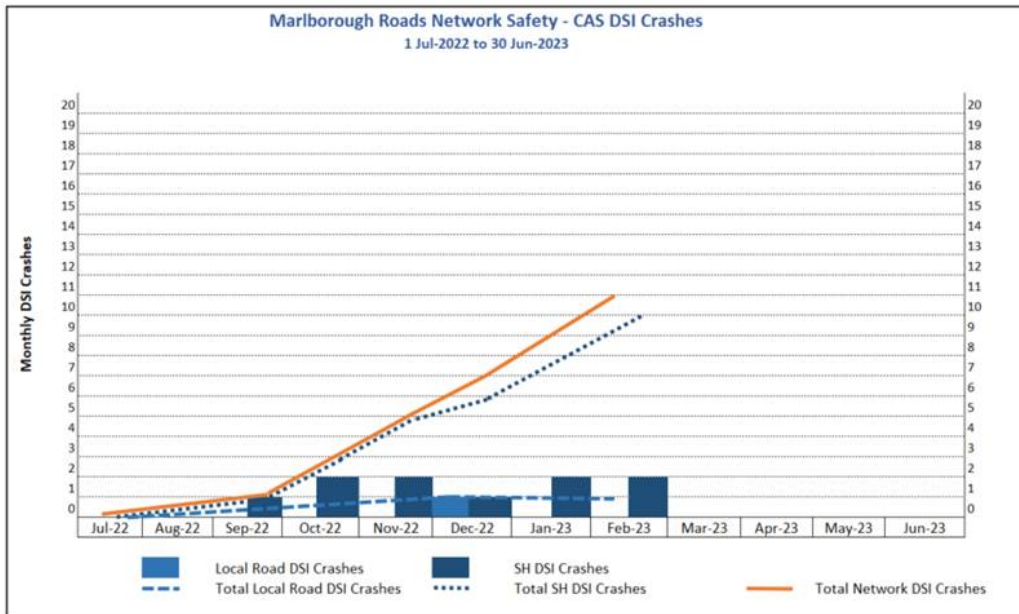
The Contract has had 2 DSI crashes on the State Highway network recorded in CAS for March 2023.

### Local Road Crash summary:

The Contract has had 0 DSI crashes on the Local Road network recorded in CAS for March 2023.

The following tabulation and chart reflects the current network knowledge for DSI crashes that have occurred in the Contract to date this year. Additional chart lines (not coloured) reflect the numbers of DSI injuries that have occurred as a result of the crashes.

### Marlborough Roads JV Network DSI Crashes Graph:



# Marlborough Roads Recovery Team Update – March 2023

## Overview

### Background

Waka Kotahi has an agreement with Marlborough District Council to manage the maintenance of the local road network under our Marlborough Roads model. Marlborough Roads has established a Marlborough Roads Recovery Team (as per the Marlborough Local Roads Recovery Plan, 4 Aug 2021).

Key points to note include:

- The recovery team was mobilised on 10 August 2021.
- In August 2022 a further weather event took place causing large scale damage mostly to the Marlborough Sounds areas.
- The recovery leadership transitioning from Marlborough Roads to Marlborough District Council. Richard Coningham, Manager – Assets and Services will continue as the council representation and governance role supported by Steve Murrin (on secondment from Waka Kotahi/Marlborough Roads).

Key strategic focus for the Recovery Team:

- Focusing recovery efforts on the key sites that have allocated funding.
- Handing sites back to Marlborough Roads BAU as sections of the network are repaired to an agreed level of service.
- Ensuring the management team maintains appropriate levels of resource for the size of the recovery efforts.
- Resilience of the Kenepuru Road.
- Establishing systems and resource to ensure the success of future recovery stages and funding availability.

The programme continues to progress the recovery efforts under the authority and support of the Emergency Management local transition, Section 940, Civil Defence Emergency Management Act 2002. It is proposed by council that this will continue until 7 April 2023.

### Health and Safety

The MRRT operates within health and safety systems established by the NOC JV and all reporting and processes are aligned to this approved standard.

In the month of February three inspections were completed in order to maintain our subcontractor inspection schedule for Marlborough Roads Recovery. All inspections showed a high level of risk management with suitable controls implemented to manage relevant risks. All workers were inducted, and workers competency was appropriate for the works being undertaken.

Council had raised an issue specifically in the Sounds area with the Recovery Team that local contractors were not being used. The issues associated with engagement of the Sounds contractors by the MRRT have now been resolved and they are now being engaged on recovery works under the contract.

Highlights:

- Excellent conversations regarding worker wellbeing after staff meeting.
- Site inspections and visits demonstrated good risk management and suitable controls implemented on subcontractor sites.
- EnviroWise training for Recovery staff as required.



## Communications and Engagement

The Marlborough Roads Recovery Team (MRRT), Council and Waka Kotahi continue to collaborate well and are continuing to build strong working relationship with the community, especially in the Kenepuru area.

The weekly roading recovery e-newsletters continue to form the base of the regular MRRT communications, supported by roading alerts on the Council's website and Antenna. A summary of key information is also included fortnightly in the Marlborough District Council's (MDC) recovery update on their website.

Both publications are planned to be amalgamated in July, following the outcome of the MDCs Future Access Study. The decision to delay this to mid-year, is to allow time for the MDCs web update to be moved to an e-newsletter format, to limit disruption and confusion for the public.

There continues to be a decrease in customer interactions with 22 CRMs in February. These customer interactions have been recorded to be imported into the MDC CRM system.

Of the 22 interactions, 12 or 55% were regarding Kenepuru Road relating to the Sounds 2 Sounds event, gaining access and reporting faults. An email received on 15 February from Alistair Cameron regarding the clearance of culverts on Kenepuru Road has been addressed with a driveover with the Zone Manager.

Regular meetings with the Kenepuru Central Sounds Residents Association, and MDC including Steve Murrin and Andrew Adams are ongoing regarding Programme of works and issues within the Kenepuru and wider Sounds Area.

There were a number of interactions regarding a fault on Croisilles Road on the goat saddle, near Okiwi Bay. These concerns were forwarded to the Zone Manager and approval gained for works to be undertaken on 1 March. This work has been successfully completed.

The Moenui Community Association emailed regarding the programmed date for the fault near the Moenui Road water tanks to be completed. Andrew Adams responded, closing out their queries.

The MRRTs Project Manager, Taura Allen and Environmental Advisor, Simon Smith, engaged with the Poutohutohu Taiao at Ngāti Rāua in February, to discuss zonal consents and interest in the Bridge 256 site (Waihopai).

## Financial Overview

February has seen another month of limited spend with minor works largely ceasing and making a start on some of the larger approved sites like Limestone mid-month. A reasonable volume of spend can be expected in March as these projects progress but until a large number of sites are being constructed concurrently it will not substantially increase.

Of the current total allocated funds, \$88M, there is a remaining \$20.7M to complete Phase 1 recovery. The following is a summary of total project spend to date. Please note that further reconciliation is underway to confirm the details in the breakdown and will be provided as soon as we have validated the figures. The black figures are from Council/Waka Kotahi showing confirmed paid costs, NOC recovery costs are invoices from the Recovery Team. Client costs and NOC response costs need further validation.

Moving forward looking at what pre-winter maintenance may be required, drainage clearance around Kenepuru and potential other tidy ups to mitigate potential damage.

The Phase 2 funding application submitted in December for \$52.4m is clearly a priority issue to resolve with the funders in Wellington as without further funding it is likely a large number of sites/desired improvements will not be able to be progressed before the next storm season.

Cyclone Gabrielle has raised some concerns as to the ability to access funding.

	2021-2022	2022-2023	Total Spent to date	Budget	Remaining Budget
All Cost	36,377,733	31,584,366	<b>67,962,099</b>	88,720,467	20,758,368.00
Client Cost	2,001,247	1,369,636	<b>3,370,883</b>		
NOC Recovery Cost	27,876,486	17,254,832	<b>45,131,318</b>		
NOC Response Cost	6,500,000	12,959,898	<b>19,459,898</b>		

Figure 1: Total Project Cost Summary

## Estimate to Complete

Budget tracker summarised below as of 15 March 2023. The budget tracker is updated weekly.

Note that costs recorded in Figure 1 Total Project Cost Summary, are costs up to 23 February for Response and Recovery, with Client costs incurred up to 15 March 2023.

Total approved funding	88,720,467			
Description	Forecast expenditure	Expenditure to date	Forecast Remaining Expenditure	Comment
Response and general costs	65,301,051	62,019,762	3,281,289	See note 1 below
Committed Projects (pre-imp and implementation)	8,062,202	1,334,440	6,727,762	
Improved Access Works	2,913,743	2,913,744	-1	
Priority Repairs (pre-imp and implementation)	10,817,233	512,178	10,305,055	
New Faults & New Priorities	2,247,150	779,750	1,467,400	
<b>TOTAL</b>	89,341,379	67,559,874	21,781,505	
Forecast funding surplus / (shortfall)	<b>-620,912</b>			
Forecast remaining available budget	21,160,593			

Notes	Commentary
1.	<p>There is a forecast overspend of \$4.8M (to 20/3/2023) compared with the initial estimate of October 2022, which includes:</p> <ul style="list-style-type: none"> <li>• over \$3M of additional response cost, and cost fluctuation adjustments may increase this amount further.</li> <li>• additional \$0.22M MRRT expenditure in October</li> <li>• additional \$1.4M design hub cost</li> <li>• additional Client-side costs of \$0.17M</li> </ul> <p>This forecast assumed Phase 2 funding would be in place by the end of March 2023 and only covered Client costs to 31 March 2023. If Phase 2 funding is not approved by this date Client costs will continue to be incurred (barge subsidies, assurance costs, property costs, direct costs to MDC of construction for items such as Fish Bay barge site). Some of these costs are time based such as barge subsidies, therefore Phase 1 and Phase 2 budgets will potentially not cover them if the programme continues longer than anticipated due to delayed receipt of funding approval.</p> <p>As a result, it is expected this overall overspend will continue to increase. A re-forecast is required, and this will impact the scale of physical works that can be completed within Phase 1 budget and start to erode the risk contingency allowed in Phase 2 prior to these funds being approved.</p>

## Construction Cost Summary

The claim for the month was \$1.7M, the areas of spend can be seen in the pie chart below. The spend has decreased compared to prior months, but we have seen an increase in construction spend with the larger sites getting underway, such as Limestone, QCD 12.17, Noels Bridge etc, and then closing out items such as the Te Mahia improved access and reseal works approved prior to Christmas.

The high-level analysis of the February claim is below.

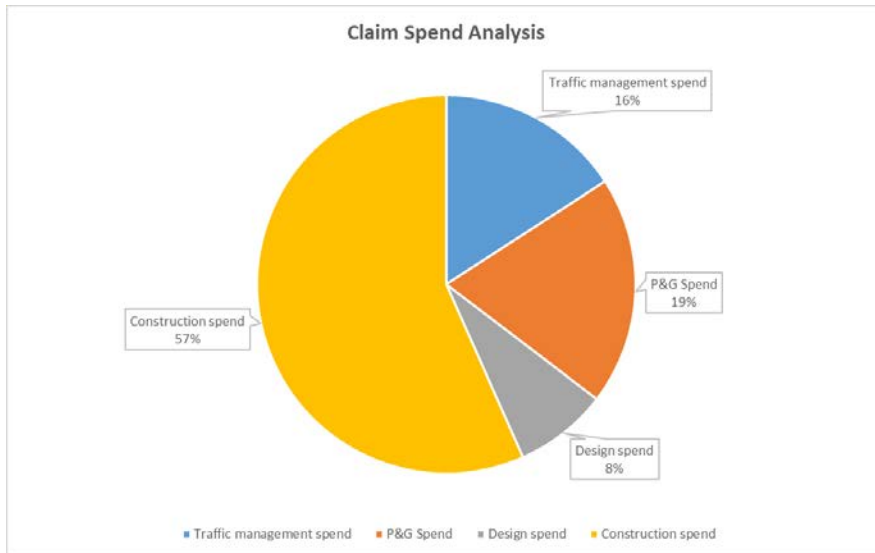


Figure 2: Construction cost breakdown of February 2023 claim

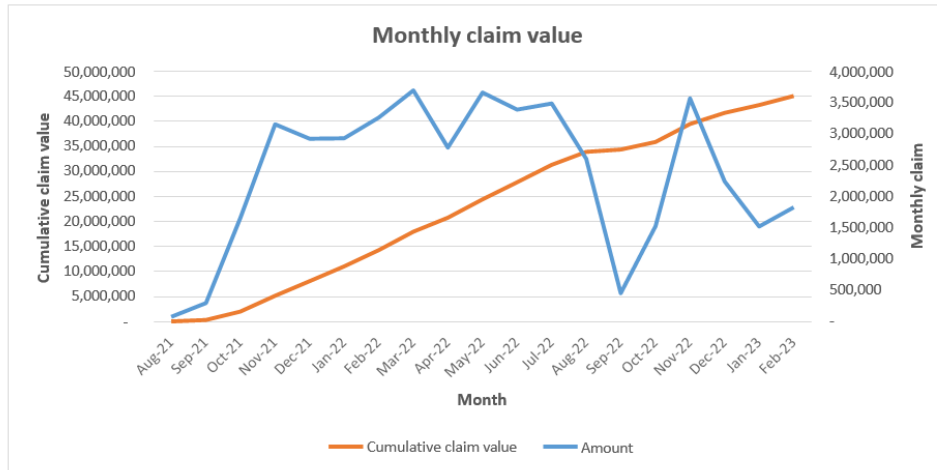


Figure 3: Monthly construction comparison of the cumulative claim value and the amount claimed.

## Programme

### Overview

The current programme shows an estimated Phase 1 completion of May 2024, there is minor movement largely related to design progress and changes in scope and/or Client priorities. The movement in the overall Phase 1 completion is related to the Māori Ford Bridge, Waihopai Valley. The overall progress is design driven and the progress of design completion is slow and regularly slipping.

### Design Progress

Phase 1 Design Completion Targets are as per 13 March 2023 Programme.

Zone	Completion	Nov	Dec	Jan	Feb	Mar	Apr	May	Jun	Jul	Aug	TOTAL	Comments
Awatere Valley	Target			1								1	Limestone
	Actual			1								1	
French Pass	Target				1				1	5	1	8	No Designs completed on French Pass yet. However, FRP-774-10210 construction was completed in February.
	Actual				1							1	
Kenepuru	Target		2	1	1	1	1	1				7	Two complete in Dec were Fish Bay and Pudneys. One in February was Te Mahia Track improvements. Two to be completed in March are Moetapu Bay Track improvements and
	Actual		2	1	1							4	

Zone	Completion	Nov	Dec	Jan	Feb	Mar	Apr	May	Jun	Jul	Aug	TOTAL	Comments
													Waitaria Jetty.
Northbank	Target			1						1		2	
	Actual			1								1	
Picton / Port Underwood	Target				4					2		6	The four complete in Feb had no design activities. These were Feb funding sites completed by the contractor, no design was completed on these. The other two that need design are PIC-712-04142 and PIC-712-04837 shown in July.
	Actual				4							4	
Queen Charlotte	Target	2		1	1	7	2	9	8	2		32	Two in November were QCD-716-12174 - DP-019 and QCD-629-05058 these had design and are complete. Feb is QCD-629-01367 - DP-033 scour protection which needed no design, so this is now complete.
	Actual	2		1	1							4	
Waihopai Valley	Target								1			1	This is WAI-805-30144 – Bridge 256.
	Actual												
TOTAL	Target	2	2	4	7	8	3	10	10	10	1	57	
	Actual	2	2	4	7	0	0	0	0	0	0	15	

## Construction Progress

Phase 1 overall construction completion dates by zone.

Zone	Jan 2023	Current	Comments
Awatere Valley	Thu 04/05/23	Thu 08/05/23	Limestone rock revetment work expected completion
French Pass	Thu 25/05/23	Wed 24/07/23	Winter resilience work
Kenepuru Road	Fri 05/05/23	Mon 29/09/23	Winter resilience work
Northbank	Mon 27/03/23	Thu 30/03/23	Noel's Bridge expected completion

Zone	Jan 2023	Current	Comments
Port Underwood	Thu 18/05/23	Thu 07/09/23	Winter resilience work
Queen Charlotte Drive	Thu 23/02/24	Fri 08/03/24	Priority sites design and construction.
Waihopai Valley	Thu 23/02/24	Tue 13/05/24	Bridge 256 expected completion
<b>Phase 1 Complete</b>	<b>Thu 23/02/24</b>	<b>Tue 13/05/24</b>	

Key risks to achieving this programme are:

- Investigations, design, property, iwi liaison and consenting.
- Procurement and construction
- Approvals
- New priorities or scope from client

## Progress

The current Recovery local roads key zones listed below still labelled as per the response zones.

Queen Charlotte Drive – Culvert replacement at Moenui completed, earth reinforced wall at RP 12.17 started and shotcrete wall at QCD-629-1367 started. Investigation bore holes completed. Other minor works items as approved completed/investigated.

Northbank – Noels Bridge progressing and on programme with a few wet days slowing the abutment construction but still on track. No other work in this zone.

Kenepuru – Improved access works complete on Te Mahia Road, Leslies crew did a good job. Additional minor works/resident issue items identified/reacted to and being worked through. Moetapu Bay Road improved access is now completed. The last of the Taradale aggregate getting moved to the roadside stockpile as part of the consent conditions has been completed. Working through winter resilience sites proposed programme for approval includes pavement maintenance, culvert replacement programme and hydroseeding.

Picton/Port Underwood Road – Pavement stabilisation works completed. Bore holes on Port Underwood Road at RP4.1 and 4.8 completed working through winter resilience sites for approval and potential culvert replacement programme sites.

Waihopai Valley – Bridge 256 expected to start later this year and will be subject to Phase 2 funding decision.

D'Urville Island – BAU yearly maintenance works programmed for Mid-March including faults from the August 2022 event.

Awatere – Limestone revetment works well underway and progressing well, weather so far has been favourable completion is expected Mid-May 2023.

French Pass – Pavement stabilisation works completed. Minor complaint and tidy up works completed on dumpsites to keep farmer happy. Work on the downhill side of Ronga Road overslip to start soon and the uphill side requires Geotech assessment which is expected early April.

The Assurance team is assisting on a handover phase on zones outside the Marlborough Sounds, that would progress through the next season and will be reporting on progress.

The following tables shows the recovery progress by fault type and by funding phase, by fault type per construction zone s. Data has been updated with the latest fault data base including faults from July 2021, February 2022, and August 2022 events.

	Minor	Simple	Complex	Grand Total
Total Faults	4415	398	218	<b>5031</b>
Total Completed	<b>2708</b>	<b>90</b>	<b>30</b>	<b>2828</b>
% Completed	61%	23%	14%	
Total to complete	<b>1746</b>	<b>288</b>	<b>169</b>	<b>2203</b>
To Complete in Phase 1	45	28	26	<b>99</b>
To complete in Phase 2	317	53	8	<b>378</b>
To complete in Phase 3	1384	207	135	<b>1726</b>

Figure 4: Current fault completion by fault type

Zones	Minor	Simple	Complex
AWATERE (complete)	67%	51%	62%
BLENHEIM (complete)	98%	33%	0%
DURVILLE (complete)	0%	0%	0%
FRENCH PASS (complete)	49%	49%	3%
KENEPURU (complete)	33%	33%	12%
NORTHBANK (complete)	86%	86%	0%
PELORUS (complete)	32%	32%	
PICTON (complete)	80%	6%	17%
QUEEN CHARLOTTE DRIVE (complete)	72%	72%	6%
WAIHOPAI (complete)	72%	72%	0%

Figure 5: Current fault completion by fault type per construction zone

## Design and Consenting

General summary of design programme: All sites in Stage 1 with design activities are currently allocated to consultants working on the project. There are currently eight consultants working on design activities for the scheduled works of Stage 1. Progress is being made on design activities with consultants completing site visits to inform optioneering and also progress sites through detailed design of preferred options, however, progress is slower than what we would like. This is often due to resource availability within the design consultancies and also review times and approvals at the MRRT end, which sometimes results in stop start activities for the consultant which are hard for them to resource. We are working closely as a recovery team with design consultants to try keep things progressing and creating efficiencies where we can to advance sites through the design process to construction.

MDC building control has approved our request for a global building consent exemption for our retaining wall construction, which will save time and cost going forward on the condition that the methodology and process are adhered to.

## Road Status Summary

Contractors overall progress has focused on Recovery and access on Kenepuru Road for residents and emergency vehicles.

Current status of roads in table below.

Road Closed	Controlled Access	Restricted Access	Public Access	Road Not Yet Assessed
0	0	58.5	617.2	0

## Risk

The MRRT PMO manages the programmes risk which is reviewed monthly and reported through the projects risk.

Any health and safety events are captured both through the MRRT NOC JV Board report as well as through the monthly MRRT KPI report to the project director. New risks identified during this reporting period are Cyclone Gabrielle, Inflation and Scope creep.

## Project controls

## Financial

Bond CM continue to undertake an independent financial audit on the client's behalf. This includes the following as of 28 Feb 2023:

### Monthly MRRT claims

Salary/Wage/Plant Rates –

- FH Salary and wage rate have been agreed.
- FH proposed plant rates have been submitted and agreed with exception of Truck rates.
- HEB Salary template and rates have been agreed.
- HEB waged staff template (one staff member) has not been supplied.
- HEB have confirmed for plant that they will not have plant on site with exception of a couple of containers.

### Audits by exception

Across the 17 claims audited to date the following items need to be resolved:

- Some state Highway Costs are still included within the Local Roads claim. State Highway costs of \$125,867 were credited out of the February Claim via the issue of a revised reduced claim. However, a review of the revised claim indicates that there is still \$250,868 of SH costs included in the claim.
- Some small value expenses (\$3k) attributed to corporate staff have been claimed which are not claimable.
- Around \$16k of costs which have been journalled into the claim titled as "LS Contract Overheads". Based on the information provided to date, some of the costs claimed appear to relate to the existing NOC. A credit of \$7k is required to correct the value claimed to the agreed amount.
- Internal Margin (roughly \$7k) claimed by FH Canterbury. Positively this error was identified by the JV themselves as the February Claim was compiled and was immediately added to the Non-deductible Tab.
- Some small fuel costs have been identified within the claim. Clarification has been requested as to what the fuel relates to as Plant rates are fuel inclusive.



## Response Claims

Response Claims – A review of the response claims during the Aug/Sep/Oct 22 period revealed an issue with the claim of BAU Maintenance P&G items during the response period when it is likely the same resources were engaged in response activities. This will be raised to the network manager for query and resolution.

## Quality

Progress claimed by the MRRT is reviewed on site by the independent site assurance team. As well as reviewing for progress and completion, the site assurance team identifies any quality issues or divergence from agreed levels of service and reflects these back to the delivery team at fortnightly team meetings with the zone supervisors (or more directly if more urgent action, such as an identified safety issue).

Overall quality and efficiency have significantly improved for example the improved access on Kenepuru Road was completed ahead of schedule, at a lesser cost.

## Photo Summary

### Northbank:

Noel's Bridge construction in progress



**Awatere:**

Limestone rock  
revetment  
work in  
progress



**Queen  
Charlotte  
Drive:**

Two complex  
sites in  
progress





**Kenepuru:**

Improved  
Access in  
Moetapu and  
Te Mahia



# Rivers and Drainage Section – Activity Report

---

(Information prepared by Andy White, Geoff Dick, Steve Bezar, Jan Dimmendaal, Duc Nuygen, Gregor Punzel) R700-014-01

## Wairau River

### Flood Damage

Flood damage edge repairs along the Wairau upstream of SH1 are currently on hold waiting for supplies of rock from the Barracks Road quarry to resume. Currently the quarry is concentrating on production and delivery of large rock for construction of Groyne 20, one of the two key remaining jobs to complete the Upper Conders/SVIS edge upgrades.

### Capital works

#### Lower Wairau Flood Capacity Upgrades – Ngāti Rārua Reach

The project commenced the beginning of March with much support from tangata whenua. Works have encountered anticipated geotechnical challenges which have been addressed with work on schedule for completion by early June 2023.



## Lower Wairau Flood Capacity Upgrade Programme – Lower MacDonalds Reach

Works completed early April, providing an additional 1100m of upgraded stopbank.



### Wairau River Protection Works – Groyne 20

Groyne 20 - rock continues to be supplied for this project, with over 2000t stockpiled on site ahead of the main works commencing in May 2023.

## Maintenance

### Lower Wairau

A fairway spraying to control woody vegetation, like willows and wattle, in the Lower Wairau inside bend at Jones' Road has been completed.

### Wairau Diversion

When the Wairau River dropped its flow down to around 15m<sup>3</sup>/s at the end of February, a 24t digger went in to clear the rest of the debris along the State Highway 1 Road Bridge as well as doing minor repair works at the erodible bank. In addition, the flow split between Lower Wairau and Diversion was adjusted to guarantee that enough water is going down the Diversion in low flow times.

# Wairau Floodplain and Tributaries

## Ōpaoa River

### *Maintenance*

Repairs to the weed boat have been completed and it is ready to start a weed cut from 1 May in accordance with Marlborough Environment Plan rules.

Visual observation suggests that following last winter's flooding, a sediment build-up has occurred in the channel downstream of the SH1 and Railway bridges. Survey of a number of established monitoring x-sections is planned between the Alfred Street bridge and Butter Factory corner to try and get a better understanding of the state of the channel and any requirement for emergency dredging.

### *Flood damage*

A 65m rip-rap bank edge repair at the Glover vineyard, Dillons Point Road is complete. Unfortunately, closer inspection of a section bank edge upstream has identified another 25m of heavy slumping very close to the stopbank. Construction of 3 rip-rap snub groynes is proposed for later in April to make safe for the coming winter.

### *Stopbank upgrades*

There are still quite large lengths of stopbank programmed by upgrade in the lower Ōpaoa River. It is planned to upgrade one more section of bank summer 2023/24. Over the winter consideration will be given to the highest priority including sections in the McCullum, Glover and Holdwat properties all in relatively close vicinity to the completed flood damage repairs.

## Upper Ōpaoa - Behind Lansdowne Park to Waipuna Street

A job has been set up to clear willow growth within the channel immediately north of Lansdowne Park.

A short section of slumping in the stopbank adjacent to the Top 10 Holiday Park has been identified and will be scheduled for repair.

## Tuamarina River

Native planting at Barnetts, planted after the channel upgrade, and berm reconstruction works have been released and are understood to be growing well.

## Are Are Creek

A start has been made in poisoning willows along the Council maintained section of Are Are Creek in Kaituna. Willows bigger than 1-2 m have been drilled while smaller trees have been carefully sprayed, considering the vineyards on the adjacent properties.

## Ruakanakana Creek (Renwick)

Emergency maintenance work within the Ruakanakana Creek in the Renwick area is underway with channel clearing upstream of Pak Lims Road. To simplify the maintenance works within the channel the flow in the creek has been reduced by dropping the intake gates at the top end.

On 22 March a productive meeting with residents was held in the Renwick Sports & Events Centre. Staff shared with the community the long, medium and short-term upgrade plans. As above, immediate channel clearing work (short term) is underway and Consultants Beca are looking at the feasibility/ preliminary design of medium term upgrades including a new Gee Street stormwater culvert.

## **School Creek, Renwick**

Our contractor's tazzing crew has been through School Creek along Renwick for weed control. Also, Terrace Creek just below Inkerman Street has been cleared from woody vegetation with a small digger.

## **Wither Hills**

Flood damage repairs are underway within the farm park with the gravel trap beside the woolshed (Sutherlands Stream) being cleared. Initial focus will be to clean out/repair existing control structures within Sutherlands, Mapps and Dungeys Gully.

## **Ohinemahuta River**



Flood damage repairs have been completed adjacent to the DOC reserve upstream of Briggs Road.

The work consisted of channel clearing and minor channel realignment following the August 2022 flood event. The Department of Conservation is planning more substantial follow up works to protect the adjacent mature native forest. Immediately upstream of the DOC land, cleared willows have been intentionally planted amongst the shifted gravel to eventually stabilise the entire bank.

## **Omaka River**

While the Omaka River was dried up we took the opportunity to do some beaching, shaping and vegetation control with a dozer between Old Renwick Road and Lake Timara Road West.

Discussions are underway with one landowner encouraging them to construct more permanent follow up works. We are awaiting some new drone survey plans to assist with the location and design of these works.

## **Taylor River: Town Area**

Flood damage repairs in the Taylor River upstream of the High Street bridge are completed apart from some planned bed level control upgrades starting adjacent to the Boulevard on Taylor subdivision. With the storm events in the last couple of years, the Taylor River has cut deeper into the channel bed as gravel gets flushed downstream but with the Taylor Dam in place there is no gravel coming down from the top end.

The majority of repairs were simply beaching and shaping as necessary with one short section of new rock edge work just downstream of the Burleigh Bridge. The work was able to be completed while much of the bed had dried up. Blockages caused by overgrown willows just below the Taylor Dam were also cleared.



**Beaching in Taylor River before and after**



Just below Burleigh Bridge rocks have been put in place to protect the bank and adjacent access track from further erosion.



**Rockwork below Burleigh Bridge**

The river crossing ford at Wither Road extension has been built for the upcoming Omaka Airshow over Easter weekend. This will ensure a safe river crossing for campers and other spectators. The original concrete ford was damaged beyond repair during last July's floods. Gravel for the crossing came from clearing BRRS bridge immediately downstream.



# Drainage

## Stormwater Pumping Stations

The duty pump at the Alabama Road pump station has been overhauled. We intend to order some spare parts for the common pump sizes given the long lead time to get these manufactured at McEwan's.

## Drainage Maintenance

The autumn drain network spray run is underway.

Mapps Waterway repairs completed and culverts upgraded.



## Floodway Reserves

Maintenance of further sections of the publicly open access tracks are planned for the autumn, particularly a badly potholed section of track on the stopbank upstream of Jeffries Road.

Incidences of vandalism, illegal tree cutting and soil dumping continue. Most recently the gate closing off a section of reserve upstream of Conders was cut open and the lock removed. The gate has since been repaired. Soil and turf stripping have also been dumped on the north bank adjacent to Barnetts.

Berm floodgate and culvert repairs at Jones Road are being undertaken following last year's flood.



## Picton, Sounds and Awatere

### Rai River

A submerged car downstream of the Rai Falls was removed from the river for the Compliance team. The car had been in the river for some time.



## Waikawa and Waitohi Rivers

The late summer mowing/tazz run of Picton waterways is complete.

Discussions are underway with KiwiRail about establishing a contractors' base at the Waitohi Domain.

## Investigation and Miscellaneous

Modelling work to progress the Amerons Creek and Ruakanakana Stream upgrades continue.

## Gravel Extraction

- The Fulton Hogan gravel extraction at SH6 bridge has been completed. The extraction has resulted in a much-improved flow capacity under the bridge. There is still some gravel build up both upstream and downstream that will be allocated next summer.
- The floods that have occurred in the Wairau during the last 12 months has resulted in a larger than normal amount of gravel deposition at various locations between the Waihopai Confluence and SH 1. To manage this additional volume where it impacts on the flood capacity of the river and bridges, additional volumes have been allocated to Contractors.

### Gravel Extraction Main Contractors 2022 - 2023

#### Volumes to March 2023

Contractor	Normal Allocation	Taken	New Allocation	Still to come	Forecasted Volume
Fulton Hogan	32,200	32,127	52,200	20,000	52,127
Mike Edridge	6,000	4,306	14,000	9,694	14,000
TC Nicholls	6,000	15,501	16,000	499	16,000
Findlater	3,600	8,187	8,600	413	8,600
Marlborough Readymix	4,400	2,000	9,400	7,400	9,400
Gills	18,900	11,678	21,000	9,322	21,000
Crafar	18,900	5,845	11,950	13,055	18,900
	<b>90,000</b>	<b>79,644</b>	<b>133,150</b>	<b>60,383</b>	<b>140,027</b>

## Quarries

### Pukaka

Activity at the quarry has increased in March with material being excavated from West Knob for completing temporary rubble repairs at the Diversion mouth.

Simcox are close to finishing a small amount of post-harvest remediation work and will then start on development of the initial benches in the new extension land. Material excavated from these benches will be carted down to the quarry floor using dump trucks and processed for stop bank repairs. The material consists of weathered rock and clay.

Davidson Partners are in the process of designing upgrades to the stormwater management system for the extended quarry. The design will detail bunding and silt pond and discharge requirements.

## Planning and Development Section

---

### Murphys Road Water Upgrade

(Information prepared by Mark Power)

C315-22-017

This Contract is for the replacement of an existing DN150 mm AC watermain with a new DN250 uPVC pipeline from Middle Renwick Road to Roseneath Lane, approximately 615m length.

Installation directly in front of Springlands School and Kindergarten is scheduled within the April school holidays.

The Contract was awarded to Schick Civil Construction in December 2022.

Physical works commenced in March 2023, with completion estimated to be due in late May 2023.

### Nelson Street Water Upgrade

(Information prepared by Mark Power)

C315-22-088

This Contract is for the upgrade of an existing DN150 AC watermain with a new DN150 uPVC watermain at Nelson Street (SH6), Blenheim between Boyce Street and McLauchlan Street, approximately 450m long.

Fulton Hogan were awarded the contract in November, with a delayed commencement date to enable completion of other Council watermain upgrades.

Construction preliminary investigations on site commenced in March 2023, with completion due in late June 2023.

### Stuart Street Water Upgrade

(Information prepared by Mark Power)

C315-22-149

This Contract is for the replacement of existing DN150 mm AC watermain with a new DN200 uPVC watermain at Stuart Street, Blenheim from Stephenson Street to the Railway Crossing. The length is approximately 215m.

The Contract was awarded to Schick Civil Construction, who intend to commence on site immediately after Murphys Road watermain (see above) is completed.

Works are anticipated to commence in May 2023 and take approximately 9 weeks to complete. Completion is therefore estimated to be in mid to late July 2023.

### Surrey Street Sewer Upgrade

(Information prepared by Mark Power)

C315-22-075

This Contract is for the renewal and upgrade of the lower Surrey Street gravity sewer main. The existing DN150 earthenware pipe is in very poor condition, with disjointed pipes and frequent cleaning required. The new sewer main will be DN225 uPVC to cater for the required flows.

The length to be upgraded is approximately 100m.

Crafar Crouch Construction Picton Ltd were awarded the Contract.

Construction is due to start in late April and be complete by late June 2023.

# Services and Operations

---

## Education Report

(Information prepared by Annie McDonald on behalf of the education team of Annie McDonald, Angela Wentworth and Ramona Millen) E340-001-001-01

Highlights from kindergartens and schools can be found in our Greenchat [GREENchat - Marlborough District Council](#) sent out to schools at the end of each term. We also keep teachers up to date with related content on our Facebook page - Search EnviroSchools Marlborough and through our local EnviroSchools Marlborough website we share stories through our blog [Blog and Stories - EnviroSchools Marlborough](#)

We also like to share examples of what is happening in our region with the National EnviroSchools team each term through their website [EnviroSchools | Marlborough](#)

The year started with the opportunity to take part in the Community of Learning teacher day as an education provider. Some of our team were in the education support area sharing the programmes and resources we can offer teachers and students and it was a worthwhile networking event with a number of school visits booked following the day.

Three staff meetings have been run on EnviroSchools looking at different aspects of the programme and resources we have developed to support students' learning.

Twelve schools we are currently working with are completing waste audits, setting up recycling stations, doing stream studies to learn about water quality, are planning native areas in their school and are looking at ways to lead projects through their EnviroGroups. Many schools are in the process of setting up new EnviroGroups and running activities to help them work as a team.

Two kindergartens are preparing for EnviroSchools reflection hui at Green Gold and Beyond Green Gold and all the eight pilot Early Childhood Education (ECE) centres are being supported to look at their next steps following doing vision mapping last year and exploring what they want their centre to look and feel like in regard to sustainability.

This year our EnviroSchools focus is on the guiding principle of Respect for the Diversity of People and Cultures [EnviroSchools | About Us](#). As part of this focus we are trialling some different ways to work with teachers and students. We have introduced a Coffee and Cake workshop running twice a term after school on topics that we have had requests for or interest in. These workshops are more hands on and interactive. The first workshop was on vision mapping and the second on composting. Both were well attended with good feedback so we will continue this next term.

We are currently in the process of collaborating with the school and early childhood educators at REAP to plan a full day Nature Connection workshop for teachers with a guest presenter for June. A number of schools and early childhood centres are interested in creating opportunities for students to connect more with nature through outdoor classrooms and place-based activities. We are also working through the New Zealand Association of Environmental Education ( NZAEE) on a Community of Practice for Nature Connection with other educators around New Zealand.

In August we are planning a workshop to share some new resources developed for the Ministry of Education on climate change with delivery support from one of our national EnviroSchools colleagues.

An online zoom for primary students with a focus on fresh water was run with expert support from Sarah Brand. We used jamboards which is a fun way to get students' feedback on what they think about the freshwater spaces in Marlborough and what they would like to see for the future.

There is no EnviroSchools Action Fund this year but we have secured \$2000 through EnviroSchools and the 1 Billion Trees Fund to offer schools support for native planting projects in their school or as part of a community programme. We look forward to sharing these stories as projects are completed

Our team have also taken part in online professional development opportunities through Enviroschools and NZAEE [Resources, Spotlights & Professional Learning| NZAEE Catalogue](#)

A facilitator workshop was run for new facilitators involved in the Kids Edible Garden programme and new facilitators are being supported in schools. There are 22 schools in the programme at present that looks at using compost made by the school to create an edible garden and learn about what is needed to make it grow well along the way. We gathered some valuable feedback from facilitators, teachers and principals at the end of last year and will be using it to make some small adaptations to the programme in 2023. Essentially the programme is highly valued by schools and without support from MDC it would be difficult for them to continue to run.

Our Sustainable Living brochures are in the process of being updated [Living More Sustainably - Marlborough District Council](#). We will also be reviewing our membership to the Sustainable Living programme as much is now available free online.

# Parks and Open Spaces Activity Report

---

(Information prepared by Jane Tito, Brad Molony, Carolyn Jones, Grahame Smail, Kiri Whiteman, Linda Craighead, Mike Lawson, Murray Morgan, Rachel Hutchinson, Rebecca Moorhouse, Regan Russell, Robert Hutchinson, Ross Laybourn)

R510-009-000-01, R510-006-02, R510-005-04-02, R800-005-03

## Blenheim Parks

### Pollard Park

Pollard Park had a sad loss in the last couple of weeks with an old Pin Oak blowing apart in the strong winds overnight on Sunday 19 March. The tree was located on the golf course side of Fultons Creek opposite the camellia beds. The tree was planted in remembrance of World War 1 soldiers who did not return. The tree had to be professionally removed, which has left a big hole in the tree canopy. Fortunately, this tree was the only one to receive any major damage from the strong winds.



Staff have been through the annual beds removing dead plants and dead heading the rest. The potager has also had a revamp with the replacement of vegetable plants and a tidy up. Otherwise, work has been focused on weeding and general tidying of the gardens.

Installation of a new roof over the staff room and public toilets at Pollard Park to deal with leaks has nearly been completed.

### Seymour Square

The four big gardens surrounding the memorial clock



tower will be having their annuals removed the week before Easter to make way for the RSA to put in the memorial crosses for ANZAC commemorations. Below is one of the gardens on the south side where annuals will be removed.



The memorial clock bell tower is having some replastering and weather sealing work done in the next few weeks to help stop the rain coming in and dripping into the main clock room. In the image below you can see one of the main cracks, which has resulted from earthquake movement, but it is not a structural crack.





## Sheps' Park

The artificial cricket strip installed at Sheps' Park is now being used weekly by Marlborough Cricket as part of the lower grades cricket competition. The location is a lovely setting for a game of cricket with fun at times trying to retrieve the ball from an errant dog.



Wairau Fantails v Wildcats – 10 March

## A&P Park

Following the removal of the large poplar trees at the Alabama Road entrance to the park, the space that has resulted is allowing for the creation of additional carparking. Both this work and the repairs to the entry road following poplar tree root removal is making progress with sealing of the surfaces programmed for mid-April.



## Rema Reserve

Resource consent was granted on 16 November 2022 to remove a notable gum tree located at Rema Reserve. Removal of the tree has now taken place and conditions of the consent requiring consultation on replacement planting are currently being worked through.



## Riverside Park

Due to the boardwalk being consistently underwater there will be significant clean up and repair cost to assets (such as lights, power boxes and walkway boards) once water levels recede.

## Lansdowne Hub

### *Your Sustainable School Workshop*

The Sustainability Trust from Wellington held a one-day workshop at the Hub to educate local teachers on embracing a culture of climate action in their schools. The main messages were around sustainability-focused climate action and a waste reduction plan specific to schools. They also discussed how to engage staff and students in the program. Talking to participants this was a very useful workshop, which will hopefully be rolled out in schools throughout Marlborough.

### *Relay for Life*

Relay for Life was held at Lansdowne Park on 4 and 5 March. This is an inspiring community event that gives everyone a chance to celebrate cancer survivors and carers, remember loved ones lost to cancer and fight back by raising awareness and funds for the Cancer Society. The relay kicked off with survivors and carers being invited as guests of honour to a reception event in the Hub, where there was light refreshments and the opportunity to add a handprint to the Relay for Life 2023 banner. Then guests were invited to lead the first lap of Relay For Life 2023 at 2pm with participants walking all night finishing at 8am the next morning. It was great to see the community come together for this event and we look forward to seeing them back next time.





## Lansdowne Park

Tasman Rugby ran a 6 week rippa rugby tournament across the three Top of the South councils. There was a great turn-out locally at Lansdowne Park with 62 teams of children ranging in age from 5 to 12 years old taking part. The largest number of teams were in the Year 7-8 group (11 and 12 year olds). Use was made of the main field at the Park.



## Picton Parks

### Port Marlborough Pavilion

#### *Summer Challenge women's adventure race*

The Summer Challenge held in the Marlborough Sounds on 25 February saw over 170 teams of three women kayak, mountain bike and hike wilderness areas, trails and waterways in the region. The course is kept secret until the race briefing on eve of the event, which this year was held at the Port Marlborough Pavilion. Teams started with kayaking in Anakiwa and finished at the Picton Foreshore, with prizegiving held

at the Pavilion on Sunday. With over 500 competitors and large amount of support crew it was great to see Picton and surrounding areas busy with this kind of event.



### Victoria Domain

Work has been completed on removing the western cedars from Victoria Domain near the Sussex Street entrance. Near neighbours have already commented how much lighter their properties are without shading from the trees. Work will be needed to remove any seedlings that come through prior to the area being planted with native species.



## Endeavour Park

The newly banded turf at the Park was damaged when a stolen vehicle managed to squeeze between barriers and do donuts around the lower sports field. The cameras on the pavilion were unable to identify the vehicle at the time but a vehicle acting suspiciously at Lansdowne Park was stopped by Police, following a call from the Lansdowne Hub team. The vehicle had been stolen the night before and on inspection was found to still carry sand and gravel remains from Endeavour Park. Four young people were arrested at Lansdowne Park.



## Koromiko (Collins) Reserve

One of the two water storage tanks at Koromiko (Collins) Reserve has been damaged during the past couple of weeks. The water tanks service the public toilets at Reserve. Someone jumped up and down on the domed top of the tank, causing it to collapse along with breaking overflow pipes and service lines from the tank. The tank can be repaired but at the loss of the water in the tank and the rigidity of the tank dome. Despite the damage the toilets have continued to operate.



## Northern Marlborough/Sounds

The Mussel Festival returned to the Havelock Domain for its 19<sup>th</sup> festival after a year's hiatus. Havelock turned on the sunshine for the approximately 3600 attendees. The Jordan Luck Band and cooking demonstrations by celebrity chef Simon Gault provided some of the entertainment for the day as well as the usual competitions and food stalls.



## District Cemeteries

Cemeteries Staff were recently invited to meet with Brian Robson from Bronze Plaques NZ (BPNZ). BPNZ is an agent and exclusive supplier of Services Memorials to Veterans' Affairs NZ. They also inspect Services Cemeteries and provide Veterans' Affairs NZ with information about the current condition of Services Cemeteries as well as any future requirements. They will then manage any maintenance work, which is sub-contracted to local providers.

Local Council, Returned Services Association and other interested parties are invited to attend these inspection visits, as local community voices help Veterans' Affairs to provide the best service possible. These visits provide an opportunity to discuss issues concerning the standard of care provided by the council, the state of memorials and any future development work that is required.

On Monday 27 March, Rachel Hutchinson (Asset Management Technician for Parks & Open Spaces), and Carolyn Jones (Cemetery Administrator), met with Brian - first at Rai Valley Cemetery and then at Havelock Cemetery. On Tuesday Brian inspected the Service Cemeteries at Picton, Omaka, Fairhall and Seddon, with Carolyn meeting him at Omaka and Fairhall.

Brian is yet to submit his full report to Council but he has taken note of several headstones where the concrete base is crumbling and needs to be repaired or replaced. He will also suggest the Council arrange a quote to repaint the flagpole at Omaka and possibly replace the flagpole at Rai Valley. The cost of this type of maintenance is covered by Veterans' Affairs. Another project to be arranged, in consultation with the Council, is the replacement of the stone base which holds the Services Cemetery sign at Fairhall (see image below).



Veterans' Affairs provide a grant to the Council towards the cost of upkeep of the Service Cemeteries. Currently there is work being carried out at Rai Valley (see image above right) to tidy the Services area and install mowing strips.

Brian talked about the bronze plaques and how over time the protective covering will be naturally replaced with a finish called patina, part of the bronze itself. Some families choose to restore a plaque before the covering has finished peeling off. This takes the plaque back to a tidy state but means that it starts the peeling process all over again, so there are pros and cons to doing this (pictured).

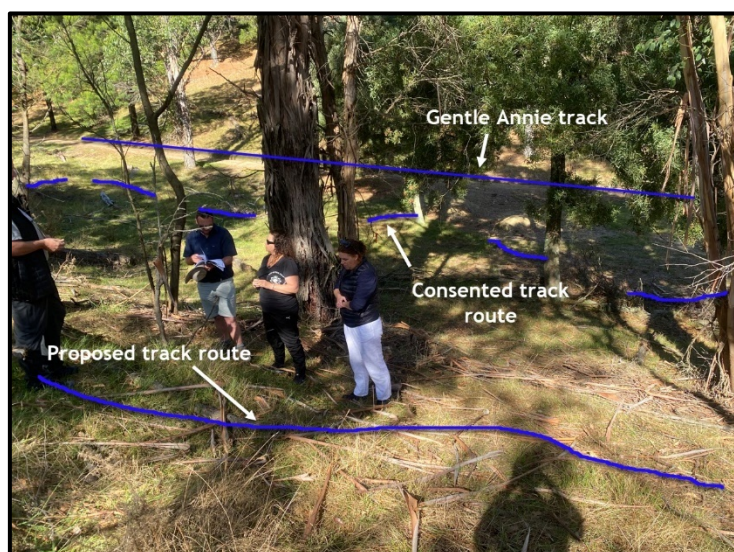


Overall, the meetings with Brian were very worthwhile, with Rachel and Carolyn learning a lot about Veterans' Affairs involvement with the Service Cemeteries. We look forward to receiving Brian's report with his suggestions.

## Walking and cycling

Staff met with the Marlborough Mountain Bike Club to walk over the route to be used for the 2023 National Secondary Schools Mountain Bike Champs ahead of track work beginning. A racetrack for the event is the priority for the Club with the skills areas to be established over the next 3 to 5 years.

A shift in alignment of the racetrack has been proposed to avoid a damp area and also to shift the track slightly further away from the Gentle Annie Track. This is being discussed with the Regulatory Department to determine whether the existing resource consent can accommodate such a shift.





In one particular area along the route there has already been earthworks undertaken by youth to create jumps – some Councillors will have observed this on a site visit to the area late last year. In this area there continues to be a lot of rubbish which is disappointing to see. Staff have also come across jumps created that cross the Gentle Annie Track and have experienced interactions with young mountain bikers biking on the Gentle Annie Track carrying spades.

This has been relayed to the Mountain Bike Club and while it is not clear if the offenders are club members, Club representatives are concerned at illegal trail and jump development. The Club will be posting through social media channels to discourage members from doing this.

## Better Off Funding

Work has commenced on a number of projects for which Better Off Funding was allocated to the Parks and Open Spaces section of Council. The following is an update on the projects that have been advanced.

Project	Description	Progress
<b>Upgrade lights on Lansdowne Park to LED</b>		
	The project will replace 164 existing metal halide lights with LED lighting on. LED lighting will result in reduced costs for maintenance and reduced energy consumption and cost savings.	A meeting has taken place with an electrical engineer from WSP to consider the requirements of converting to LED lights. In addition to the purchase of lights, changes may be required to the electrics, the main switch board and existing switching gears.
<b>Tracks and paths and improving accessibility</b>		
<i>Okiwi Bay track</i>	A new walkway/cycleway will provide a recreational opportunity for residents and visitors through native bush.	A number of meetings have been had with the Okiwi Bay developer on the trail development. A resource consent is currently in process for land disturbance associated with track development with consent and design fees to date of approx. \$12,800 being paid.
<i>Sealing Marina 2 Marina track</i>	The project is to seal the existing walking and cycling gravel track between Picton and Waikawa. The aim is to provide a safer off-road alternative for cycling without affecting the existing road network.	Initial discussions with contractors have occurred and there are some areas of the track that may need reworking to ensure accessibility.  A potential diversion of the track is also being considered to support accessibility concerns
<i>Audit of community halls for accessibility</i>	An audit of all halls for accessibility is to be undertaken with an objective to ultimately enable greater use of the facilities by all members of the community.	A consultant has been identified to undertake the audit of halls.
<i>Seymour Square to Taylor Reserve – walkability improvements</i>	Improvements along Alfred Street from Taylor River Reserve to Seymour Square are required to provide safe and easy access particularly for those with impairments.	A workshop has been held with Marlborough Roads to review plans and ideas for implementation, including pricing.
<i>Accessible change facilities</i>	Specialist change facilities are proposed for Picton and Pollard Park	A review of the policy on the provision of accessible change facilities is being carried out as part of advancing this project.
<i>Bike hub lock and charge stations</i>	These stations will provide lock up facilities and charging for electric bikes.	Initial discussions with a company providing this type of facility have been had.

Nelson Square design		
	The project aims to develop Nelson Square as an entry statement area with emphasis on providing rāhiri or welcome to all through landscape features, activity spaces for whanau and selected native plantings.	Early consultation with iwi has been completed. Staff are to make further contact with iwi before advancing the project further.

## Trees

### *Overhanging Vegetation Growth*

The Council's annual inspection of urban footpaths and roads checking for overhanging growth contract is due to start on 1 May. The reason for these inspections is that where trees or other plants overhang a footpath or road from private property, there can be safety and/or accessibility issues for people using these areas.

To ensure our footpaths are safe and accessible for everyone, including the postie, kids on scooters, the sight-impaired or less able, the Council's contractors undertake inspections of footpaths and roads around Marlborough's urban areas. Information is collected live in the field using an app and notices are sent to property owners advising them of their obligations to prune or remove the overhanging trees or vegetation. The Council has powers under Section 335 of the Local Government Act 1974 to require landowners to remove overhanging vegetation.

Follow-up inspections are carried out to ensure overhanging growth is removed and as a last result the Council's contractors will carry out the work and recover the costs from the landowner.

Prior to inspections starting there will be media releases advising property owners of the inspections commencing and that they should check their property frontages so the clearances as shown in the accompanying diagram are maintained.



### *Wind damage*

Two trees were damaged during the last significant wind event with the extent of damage requiring them to be removed. This included a very large Ash tree from Ballinger Park and a street tree in Horne Place.



**Ballinger Park ash left and street tree in Horne Street right**

A number of other trees also lost branches. Considering the strength and direction of the winds the damage was very minor. Although the strongest gust recorded was 62kph, because of the direction of the wind and the feeling of staff that the wind was gusting stronger, staff followed the Council's Tree Policy protocol and had an Arborist inspect all Council trees over 10m in height for damage. Fortunately, no damage was identified.

### *Failing Trees*

In 2019/20 we had some extreme temperatures, at times reaching 37 degrees in some parts of Marlborough. We are now seeing the stress this weather pattern had on the Councils' larger tree stocks – see images below of two large dead gum trees at Oliver Park. Last year, we saw numerous Cabbage trees dying around the region. This summer we are seeing large trees including 40 year old flowering cherries and 30 year old gum trees dying. It usually takes 2-3 years for trees to show the results of drought and heat stress.



## Playgrounds

The Council provides support to schools with the development of new or an upgrade of existing playground, within their school grounds, where the playground is open for use by the public and local community during set periods. The criteria for approving funds are set out in the Council's School Playground Funding Policy but essentially support may be provided where:

- No nearby reserve area provides play equipment suitable for the needs of the immediate community.
- The community considers that the school is a more suitable location for playground development than a nearby reserve.
- That the nearest playground is not less than 500 metres from the school location.

Requests for support are generally received through the Annual or Long-Term Plan process, which are then referred to the Assets & Services Committee for consideration. The Council may fund up to 50 percent of capital costs to a maximum of \$40,000.

In November 2021 funding was approved for the Omaka Marae Kura to install an artificial turf. Although the surrounds are not yet complete, the turf has now been laid and is being enjoyed by tamariki attending the kura.



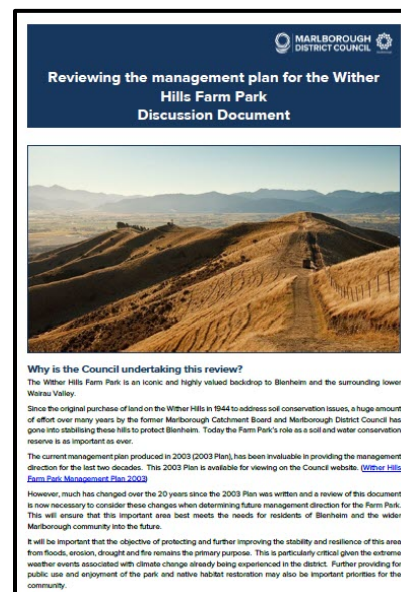
# Policy and planning

## Wither Hills Farm Park Management Plan Review

A discussion document providing context for the review of the Wither Hills Farm Park Management Plan was released for public feedback on Thursday 23 March. All of those who had previously submitted on the proposed bike skills area and those who had been involved in the early consultation were advised of the opportunity to provide feedback.

Much of the feedback received to date is very considered with thoughtful responses when asked for reasons as to people's views about various aspects of management of the Farm Park now and going forward.

At the time of writing 30 submissions had been received. The feedback period closes on 27 April and copies of the discussion document and submission forms are available on the Council's website and at the Blenheim and Picton offices.



## Rangers' Report

The following table shows the dumpings that have been recorded by the Rangers over the past six months. March has shown a jump in all types of dumping (bar abandoned vehicles) compared with the previous two months.

Illegal Dumping and Littering	Number of Incidents						
	Sept 2022	Oct 2022	Nov 2022	Dec 2022	Jan 2023	Feb 2023	March 2023
Garden Waste	3	3	5	7	-	3	7
Abandoned Vehicle	1	-	1	1	4	2	-
General Illegal Dumping	5	9	11	6	7	3	11
Offal	3	1	2	4	-	1	4
Littering	11	13	7	11	3	2	11

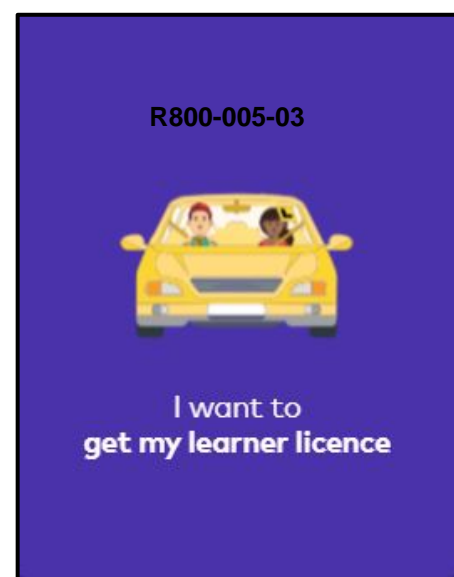
## Road Safety Coordinator Update

(Information prepared by Robyn Blackburn)

### Young Driver Safety

Supporting Families has submitted a tender for MSD funding to deliver Driver Licencing programmes in Marlborough. The funding will be used to support drivers who have come to the attention of the Police or have been identified by other local agencies as needing support progressing through the Driver Licencing System.

While this new funding will primarily target MSD clients, it is planned that Council road safety funding currently used to fund the programme of works, can be used to support those non-MSD people who would otherwise struggle on their own.



If successful, Supporting Families will have funding available from 1 July 2023 to deliver a programme targeting a lot more people than in the past. It could not come at a better time for Marlborough as the current Council funded programme has been put on hold due to budgets already being spent this financial year.

We were able to trial the delivery of our new Learner Licence Programme where the content is made up from ACC's DRIVE programme. Results were not as good as in the past but there were a few mitigating factors. A de-brief was held in late March to discuss the trial and how we can do things better in the future.

### Cycle Safety

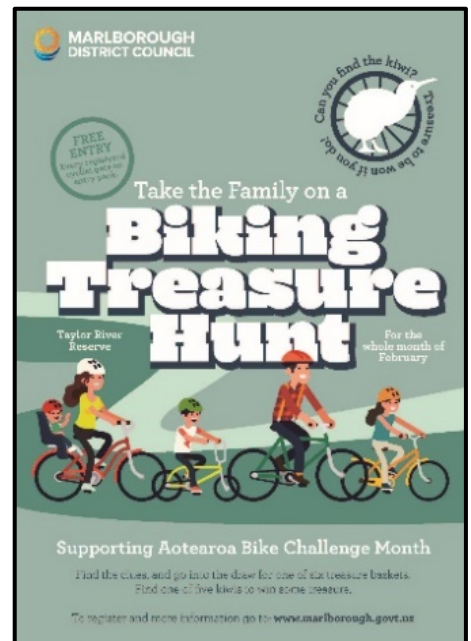
During Aotearoa Bike Challenge Month, the Council opted to change the normal 'Go by bike day' breakfast event to a family treasure hunt cycling event along the Taylor River Reserve. The point of difference for this event was that families or individuals could pick up packs with a clue booklet and complete the event any time or day of their choosing. As we were late in producing the material for the packs, we decided to run the event throughout March as well.

Normally our 'Go by bike day' might attract up to 60 riders. So far, the 'Treasure Hunt' event has attracted 960 registrations and all registration packs have been picked up from the front counter. The completed booklets are pouring back in to the CSOs and we would like to extend our thanks to front counter staff for all their support considering the large numbers. The feedback from the community has been positive and delightful to read.

*"Had an absolute blast doing this with our kids. Made it as far as the paintball as one of us was jogging and 7.5 km seemed a good spot to turn around!"*

*Will have a crack at the Taylor dam end next weekend. Leo found himself a kiwi in the "thicket" so super stoked and very excited to do more :)*

*That was a really good way to get everyone ranging about and looking critically at clues within the photos to try and rule out certain areas as not quite right. Thanks a bunch, was a fab family outing".*



I took a couple of the grandsons on the hunt today. Luka had to use the first aid kit on Richie. We had a great time hunting.



# Access & Mobility Forum

(Information prepared by Jane Tito)

C230-001-A01



## Access and Mobility Forum Meeting held at Lansdowne Park, Blenheim on Monday 27 March at 2.00pm

**Present:** Councillor Deborah Dalliesi, Robyn Blackburn (Grey Power), Fern McGaw (Waka Kotahi), Paul Southey (Marlborough Roads JV), Diane Gibb (Marlborough MS and Parkinson's Society), Nigel Perry (Road Safety Volunteer), Charlotte Campbell-Lamerton (Marlborough Roads), Jill Scoble (Marlborough Stroke Club) and Sharlene Eden (Maataa Waka)

**MDC Staff:** Linda Craighead, Bill East (Duty Building Control Officer), Jodie Griffiths (Community Development Administrator)

**Attendance:**

Gillian Dixon (MDC Secretary)

**1. Welcome and Introductions**

Clr Dalliesi welcomed everyone to the meeting and introductions followed.

**2. Apologies Received**

Clr Matt Flight, David Clode, Rhys Thomason, Hana Wilkinson (Nelson Marlborough Public Health), Lyn McKay, Hularii McKenzie, Carla Taylor (ORS Teacher MGC/Amputee Society TOS), Louise Richards (MDC Customer Services Officer)

**3. Confirmation of the Previous Minutes**

The minutes of 5 December 2022 meeting were approved by Jodie and seconded by Robyn

**4. Matters Arising from the Previous Meeting**

1	Disability car parking spaces at Bay Audiology (as Clr Flight was an apology this will be tabled at the next meeting)	Clr Flight
2	Dates of 2023 meetings (Dates now set for 2023 and next meeting to be held in the Committee Room at MDC)	Gillian
3	Disability car parks in drop-off area at Airport. (see below)	Charlotte
4	Comment form to BBA (Form passed to BBA and update from Robyn at next meeting)	Robyn
5	"Think of your Neighbour" messaging. (Jodie spoke with the Comms team and timing of messaging to be around the roll-out of new the bins) (Also see below)	Jodie On-going
6	Recycling bins on footpaths (Instructions will be provided at the roll out of the new bins – further discussion below)	Robyn
7	Mobility Parking Flyer (Robyn still to hear from Tania at NZTA – Fern will chase)r	All
8	Accessible lift at the ASB Theatre (All persons requiring an accessible seating arrangement are catered for on the first level. Bill's full response will be forwarded to Carolyn Corrin) <b>ACTION Gillian</b>	Bill

1 | Page

- 4.3. **Disability Car parks in drop off area at Airport, Charlotte**
- Charlotte provided an up-date on a recent meeting with Airport management.
  - There will be a number of disability parks in the new car park.
  - The drop off area is too small to include disability parks.
  - There are currently some spots near the door, through the barrier, and the first 15 minutes are free. It was agreed that 15 minutes is not always long enough.

**ACTION:**

- Clr Dalliessi to discuss further with Charlotte.
- Clr Dalliessi and Dianne to carry out a timed site run.

- 4.5. **“Think of your Neighbour” messaging.**

A general discussion around delays to collections including Francis and Stephenson (Dianne) and recycling crates on Maxwell Road (Jill).

**ACTION**

Clr Dallessi to look into this further with Alec McNeil (Solid Waste Manager)

**5. General Business Including updates from: Marlborough Roads and Waka Kotahi Fern McGaw and Paul Southey**

- Pleased to report that (i) the trip hazard on corner of Lakings/Purkiss has been ground down. (ii) Trees removed and roots ground down on Leefield Street.
- Fern reminded everyone that any problems with pavements should be reported on [admin@marlboroughroads.govt.nz](mailto:admin@marlboroughroads.govt.nz) with, if possible, a photograph of the problem together with a wider shot to show location.
- Robyn also asked that any accidents or incidents on footpaths be reported on the MDC website using the link <https://www.marlborough.govt.nz/recreation/cycling-and-walking/cycling/report-a-crash-or-near-miss>
- Rudd Crescent and Riley Crescent next job on the list.
- There is a huge amount of work to get through at the moment with the lack of contractors causing the delays.
- Alfred Street pedestrian crossing being reviewed for easier accessibility.

Other areas of concern reported by the group	Reported By	Action
Manhole near Pizza Hutt/Harvey Norman: Resulting in uneven and moving cobbles	Dianne	
Pedestrian Crossing on High Street, outside Gascoigne Wicks: The construction of the pavement at both sides of the crossing has recently resulted in Dianne getting her wheelchair stuck. Robyn advised that this whole intersection of roundabout and crossings has 30+ entries on the Near Miss Report. Charlotte confirmed that this intersection is not correct and needs to be reassessed and will be seeking funding for improvements in the plans for the CBD.	Dianne	
Current flooding on the board walk needs signing at the Henry Street entrance to stop people going any further. <b>ACTION:</b> Linda to follow up	Dianne	Linda
Cars regularly parked on the pavement outside Wadsco/Motor World. Charlotte advised that they do have a Licence to Occupy but not the whole footpath. It was agreed that a demarcation line would be good. <b>ACTION:</b> Charlotte will look into the details of the Licence to Occupy and report back.	Dianne	Charlotte
<b>ACTION:</b> Distance from roundabouts to crossings to be checked and reported by Fern.		Fern
<b>ACTION:</b> Clr Dalliessi to go back to residents of Ashwood and Springlands Villages who had complained to her about problem crossing areas and ask them to complete the Near Miss Report.		Clr Dalliessi



Thank you for the bollards near Marlborough Boys College	Nigel	
Problems still at the junction of Seymour and John Street due to there being both a give way sign and a stop sign. Rather than the give way markings being erased they have been painted again.	Nigel	Fern
Problems with manhole covers after roads have been re-sealed. <b>ACTION:</b> A list to be drawn-up by Nigel and provided to Paul.	Nigel	Paul

#### **Building Control Update – Bill East**

- Due to the current economic situation, there is not a lot to report for Building Control
- Working on the building consents for the iRex project and Summerset Villas
- The opening of the new library is coming up very soon
- Log fire season is coming up and applications have started to come in
- Regulation changes to thermal resistance for new buildings will take place in May which will effect the whole of the Building Code for the whole of the country. Currently working on certification.

Dianne reminded the meeting that a pre-opening visit to the Library had been discussed at previous meetings.

**ACTION:** Bill will discuss with Jamie Lyall.

Dianne questioned the size of the Emergency Exit door in the café at Mitre 10 and it not being wide enough for wheelchair access.

**ACTION:** Bill to check on the plans and report back

#### **Parks and Open Spaces Update – Linda Craighead**

- Work on the Better Off Funding project including 3Water Relationships and promoting community wellbeing currently underway. Some of these are applicable to access and mobility including:
  - footpaths along Seymour Square to Henry Street
  - adult changing facilities in Picton
  - Sealing to the Marina track in Picton
  - New tracks in Okiwi Bay
- Improvements and street scape on the area around the new library
- Submission request for the management of the Wither Hills Farm Park

#### **6. Any Other Business**

##### **Total Mobility Scheme**

Dianne asked if there was any more that could be done to promote the Total Mobility Scheme as she is aware of people who need to but don't know how to access it. Charlotte advised that applications are done through the MDC website and leaflets were distributed to GPs.

**ACTION:** Jodie to look at including something in the Older Persons information quarterly.

##### **Issues raised at the recent Grey Power AGM – Robyn Blackburn**

- Remember to keep left on cycleways and for the use of bells or other warning methods to alert walkers on shared pathways.
- Possibility of training for older cyclists returning to two wheels and training for mobility scooter users.
- Trip hazards on the Wither Hills walkways – example of a walker and former MDC river engineer taken a tumble having tripped on a protruding waratah.

**ACTION:** the general use of footpaths to be discussed at next meeting

##### **Speed Management**

Clr Dalliessi and Charlotte had just attended a two-day workshop on speed management.

**ACTION:** All with any concerns regarding speeds on our roads please report them to Gillian.

**The meeting concluded at 3.55pm**

**Date of next meeting: Monday 26 June 2023, Committee Room, Marlborough District Council**

**Actions from the Meeting**

1	Disability car parking spaces at Bay Audiology	Clr Flight
2	Disability car parks at the drop off area of the Airport. <ul style="list-style-type: none"> <li>• Clr Dalliessi to discuss further with Charlotte.</li> <li>• Clr Dalliessi and Dianne to carry out a timed site run.</li> </ul>	Clr Dalliessi
3	Delays to collections including Francis and Stephenson and recycling crates on Maxwell Road. Clr Dalliessi to discuss with Alec McNeil	Clr Dalliessi
4	Current flooding on the board walk needs signing at the Henry Street entrance to stop people going any further.	Linda
5	Wadsco/Motor World Licence to Occupy details	Charlotte
6	Distance from roundabouts to crossings to be checked	Fern
7	Residents of Ashwood and Springlands Villages complaints to be added to the Near Miss Report.	Clr Dalliessi
8	Junction of Seymour and John Streets – continued confusion with both STOP and GIVE WAY signage.	Fern
9	Raised manhole covers after road re-sealing – list to be provided for Paul	Nigel
10	Library visit	Bill
11	Mitre 10 Café Emergency Exit door plans to be checked	Bill
12	Forward Bill's report on ASB lift to Carolyn Corrin	Gillian
13	Total Mobility Scheme information to be included in the Older Persons quarterly.	Jodie
14	Speed limit concerns on the regions roads to be provided to Gillian	All

# Property and Community Facilities Project Report

(Information prepared by Maighan Watson)

## The Marlborough Mile – Blenheim Business Association

The new kinetic and interactive sculpture 'Tama-nui-te-rā', was installed at the Marlborough Mile Climate site in early March. Designed by Rawstorne following a nationwide REOI and RFP process, then fabricated by globally recognised steel fabricators Global Stainless, the sculpture has quickly become a striking and hotly discussed new addition to the Blenheim CBD. Landscaping at the Marlborough Mile Heritage site within The Quays has also been ongoing. Purple heart timber to match existing materiality in The Quays was sourced and is now installed as new seating around the base of the A.S. masts. The Heritage ground anchor has also been installed and new turf laid.

Storyboards for both sites will follow and be installed each site.

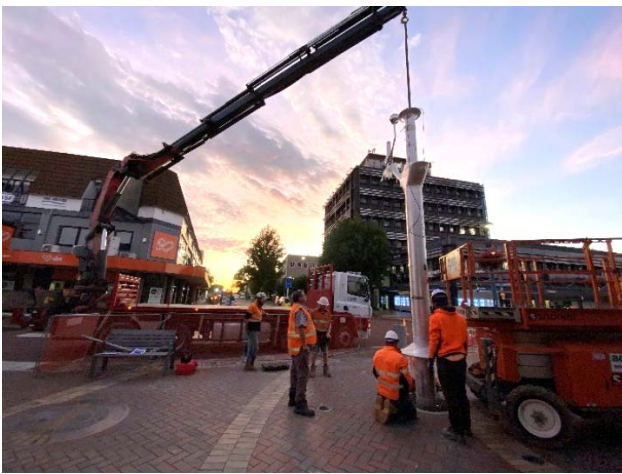


Fig 1: Tama-nui-te-rā installation



Fig 2: Tama-nui-te-rā installation



Fig 3: Turf reinstated at The Quays

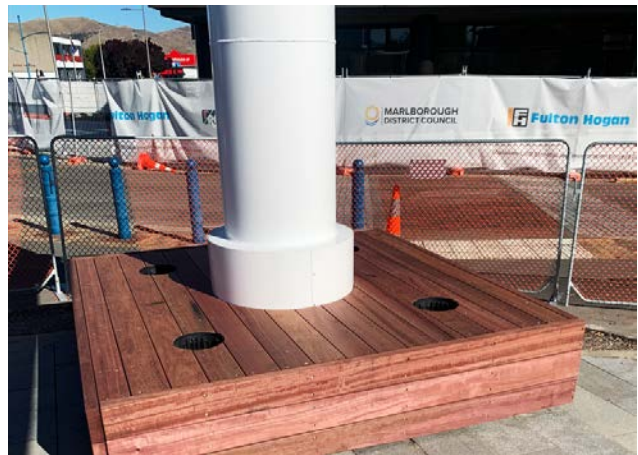


Fig 4: Timber seating around base of A.S. Echo masts

## London Quay Precinct Upgrade, Picton

Planning and design is underway to rejuvenate London Quay in Picton. Led by the Parks & Open Spaces team, three themes for the development were identified; Improved connection from the port, foreshore to the town centre, improving and creating attractive places to eat and walk, and improving the pedestrian and vehicle experience in a share space.

## Senior Housing development - 85 George Street, Blenheim

After several setbacks work is now underway for the new two storey, 12-unit Senior Housing development. Drainage trenching is now complete, infrastructure laid and the first half of the concrete pad, which will be completed in two stages, has been poured. Framing has begun on the southern end of the development, with the first ground three units now underway. Fibre is also ongoing, with the lift connection now installed and existing services undergrounded. The development requires an electrical network upgrade, for which Marlborough Lines have provided a design proposal.



Fig 5: Concrete pad pour Stage 1



Fig 6: 3D render 85 George Street

## Blenheim Streetscape Upgrade – High, Wynen and Symons Street

Head contractor Robinson Construction, and civil subcontractor Fulton Hogan are in the final stages of completing the immediate area around the new Library Art Gallery, with only a small but intricate section of paving to complete in the new alleyway. Stage 1 of Wynen Street (east end) is also now complete. The road carriageway has been newly asphalted and line marked, the new raised road crossing is complete, new street light poles have been installed, and garden beds and new street trees are being planted this week. Wynen Street will be fully re-opened to pedestrians and vehicles before Easter, and Fulton Hogan will shift over to begin work in The Quays and Symons Street post Easter.



Fig 7: Streetscape upgrade, paving laid.



Fig 8: Streetscape upgrade, Wynen St complete



Fig 9: Amphitheatre pole lift



Fig 10: Wynen Street newly asphalted

### Marlborough District Library & Art Gallery

Head contractor Robinson Construction are applying the finishing touches to new Marlborough Library Art Gallery project. Subcontractors are completing the final paint touch-ups, cabling, and installing shelving. The external screens will start to be installed mid-April to the northern end of the building. Robinson's will continue to decant their site yard over the coming weeks and cleaning the facility in preparation for the move in date. Later this month a dawn blessing will be held, closely followed by the soft opening to the public two weeks following.

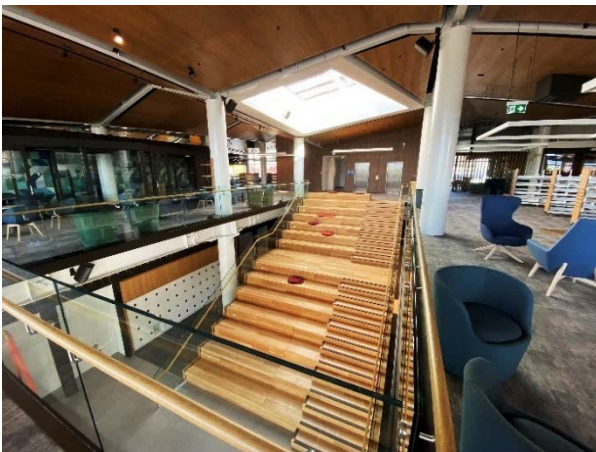


Fig 11: MLAG



Fig 12: MLAG



Fig 13: MLAG children's area



Fig 14: MLAG first floor

Record No: 2372027