



**MARLBOROUGH
DISTRICT COUNCIL**



Only Marlborough

Sunset - The Grove Arm

**Information Package
Regulatory Department
9 March 2023**

Contents

Environmental Science & Monitoring	1
Biosecurity (Pest Management)	1
Environmental Science & Monitoring	5
Catchment Management	8
Environmental Science (Hydrology)	9
Freshwater Science.....	15
Nautical and Coastal Team	20
Marlborough Landscape Group	22
Building Control Group.....	28
Alcohol Licensing.....	32
Resource Consents Section	42
Resource Consent Approvals Under Delegated Authority	44

Environmental Science & Monitoring

Biosecurity (Pest Management)

(Report prepared by Brent Holms, Liam Falconer & Rob Simons)

African feather grass

(E315-003-002-01)

Control and surveillance work for African feather grass was completed this month. A total of 10 sites were visited, two of which were historic sites. In total 29 plants were found at two separate sites – Wharanui and Cloudy Bay Drive.

Chinese pennisetum

(E315-003-010-01)

Biosecurity staff have commenced surveillance and control activities in the Port Underwood and Onamalutu areas where Chinese pennisetum is known to occur. So far, only five plants have been discovered and the remaining sites will be visited by the end of the month.

Cotton thistle

(E315-003-012-01)

Cotton thistle control operations were completed in late January with biosecurity staff undertaking a second visit to the eight active sites. Most of the plants were found at three sites – the Springs, Mt Gladstone and Craiglochart. Thistle numbers continue to trend downwards, with a total of 202 plants controlled this season compared to almost 400 last year.

Evergreen Buckthorn

(E315-003-014-01)

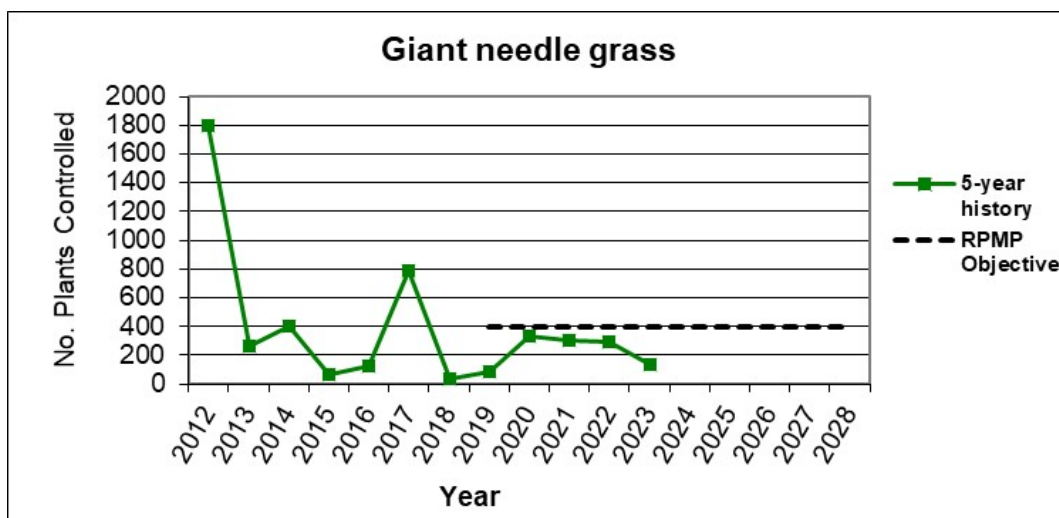
The annual joint operation between Council Biosecurity and DOC staff in the Manaroa area was undertaken in mid-February. A total of 248 plants were destroyed across 9 sites.

Giant needle grass

(E315-003-015-01)

Giant needle grass control was undertaken on 18 January 2023 with a total of 138 plants being destroyed over 19.75 person hours. This included visits to all active sites and a third of the historical sites. The number of plants found have remained relatively stable over the last few years – see below.

Table 1: Long term trend – giant needle grass control efforts



Kangaroo grass

(E315-003-017-01)

Council Biosecurity staff have undertaken compliance inspections on all sites subject to land occupier obligations to destroy kangaroo grass. No non-compliant properties were identified this year.

Biosecurity staff have also undertaken control work on sites subject to the service-delivery component of the programme. This involved visiting 24 sites with 295 plants being destroyed over 38.5 person hours. In addition, five historic sites were also visited with no plants being found.

Moth plant (E315-003-020-01)

Biosecurity staff visited two properties on Howick Street last month to search for moth plant. Two plants were found and destroyed.

Reed sweet grass (E315-003-026-01)

Council Biosecurity staff visited an historic reed sweet grass property on Redwood Pass Road and discovered it has re-emerged with two patches found. The patches were sprayed out with approximately five litres of herbicide and the site was reclassified from "historic" to "active".

Saffron thistle (E315-003-029-01)

The second run of control and surveillance work for the 2022/2023 saffron thistle programme has been completed, with all eight active sites visited. A total of 76 plants were destroyed over 34.5 person hours.

Overall, 670 plants were controlled this season which is a large drop from last year's total of over 4000.

Tall wheat grass (E315-003-032-01)

All sites subject to the tall wheat grass RPMP Sustained Control Programme have been visited this season. A total of 24 sites were visited, predominantly in the Dillons Point Road and Cob Cottage Road areas. Biosecurity staff also visited the new infestation on the southern edge of the Vernon Lagoon and found a marked increase in the number of plants present compared to previous years. Approximately 400 litres of herbicide were applied to the infestation over a period of two days.



Image 1: Biosecurity officer Shane Webber carrying out tall wheat grass control at Vernon Lagoon

Wallabies (E315-003-033-01)

In late January a report was received about a possible wallaby sighting in the Pelorus Sound. A response was stood up immediately after the report was received.

Ground hunting has been undertaken with no wallaby sign seen. Camera traps have been set in the area as well as utilising neighbouring landowners existing camera trap networks. Interviews have been conducted with the informant as well as neighbouring landowners. Due to the outcomes of the interviews and initial

ground hunting, we believe it is unlikely a wallaby. However, we will monitor the camera network until we are certain there are no wallabies in the area.

An additional report was received of a wallaby sighting in the Picton CBD late at night in early February. The report was unable to be verified. We are continuing to monitor for any further reports or information.



Image 2: Biosecurity Officer Hayden Nott installing a camera trap in the Pelorus Sound.

Other Biosecurity Projects/Initiatives

Pink ragwort

(E315-005-000-01)

On 9 February 2022, Biosecurity and Department of Conservation staff re-visited the pink ragwort infestation at Tokakaroro Point in the Marlborough Sounds.

During the operation it became apparent the plants were no longer in flower which made locating the plants more difficult than the previous visit which was conducted in October 2021. Plants were either hand-pulled or sprayed with herbicide. Hard to reach plants were accessed using a ladder and extendable wand. In total, 115 plants were destroyed.

Wilding kiwifruit

(E315-005-000-01)

Biosecurity staff are continuing to come across wilding kiwifruit sites as we look to determine the regional extent of the plant. In this period one new site was identified. This site was discovered in Pelorus Sound while biosecurity staff were setting up camera traps following a wallaby sighting report.

Jobs for Nature: KMTT 'Restoring Flora' project update

(E315-021-002-02)

Restoring and protecting Flora activities this period

Transport and accommodation arrangements were made for weed-led work to be undertaken at Clova Bay to control wild kiwifruit vines. Unfortunately, the work had to be postponed until March 2023 due to the uncertain weather conditions caused by Cyclone Gabrielle.

Another site with an un-controlled kiwifruit vine was found by biosecurity staff during a response to a wallaby sighting in the Pelorus Sound. Follow-up surveillance will be undertaken to determine the extent of the kiwi fruit infestation. This surveillance work as well as the early intervention work carried out by Jobs for Nature will greatly assist in any future management decisions for wilding kiwifruit in Marlborough.



Image 3: Example of a wild kiwifruit vine.

The Jobs for Nature Restoring and Protecting Flora Project has been collaborating with the Hinepango Wetland Restoration Group (HWRG), resulting in the control of willows and other weed species which will enable the HWRG to undertake restorative planting at the site. This is a great example of J4N working with community groups to a single outcome - the restoration and enhancement of a valuable ecological area.

Project scale in Marlborough as at 31 January 2023

Willow removal at the Lion NZ wetland has moved into a new phase. Willow control was undertaken within the seven-hectare finger wetland adjacent to the Rarangi golf course. 306 target plants were destroyed this month. Figure 4. summarises the achievements made to end of January 2023.

Table 2: Summary table of the Restoring and Protecting Flora Project in Marlborough

	Total at end of Q6 31 December 2022	Q7 Period 01 Jan – 31 Jan 2023	Q7 Period 01 Feb – 28 Feb 2022	Q7 Period 01 Mar – 31 Mar 2022
Total site area Marlborough (ha.)	2525	–	–	–
Total Operational areas (ha.)	1104	–	–	–
Operational area treated (ha.)	161.3	7.33	–	–
Total area receiving benefits (ha.)	624	–	–	–
Target weeds controlled, excl. OMB	1586	306	–	–
OMB treated (ha.)	15.8	0.16	–	–

Environmental Science & Monitoring

(Report prepared by Matt Oliver)

Land Resources Science Update

(E355-various)

Council Land Resources programme is a part of the Land and Water Team within the Environmental Science Section. The programme is overseen by Peter Hamill and implemented by Matt Oliver and Jorgia Macmillan with assistance from Zeke Hoskins.

The Land Resources programme seeks to support Council's regulatory and non-regulatory functions related to soils and erosion, farming, catchment management, waste discharges to land and land and water quality interactions. The programme is split into three main workstreams; Soil Quality and Mapping, Spatial Tool Development, Catchment and Nutrient Management.

Soil Quality and Mapping

(E355-001-001 & E355-004-008)

Council has a regulatory requirement to monitor soil quality in the region under the RMA. To do this Council has established 96 sites across the region. Each year around 20 of these sites are monitored for chemical biological and physical attributes. Samples are taken and tested in laboratories ahead of reporting around April / May of the following year. This programme commenced in the year 2000 with sites being sampled on a five yearly rotation. The programme can detect trends in soil quality and has identified three major issues with soil quality across the region. These are increasing soil compaction on livestock farming and viticulture, high levels of nutrients across all forms of farming and declining soil carbon levels in cropping and viticulture.

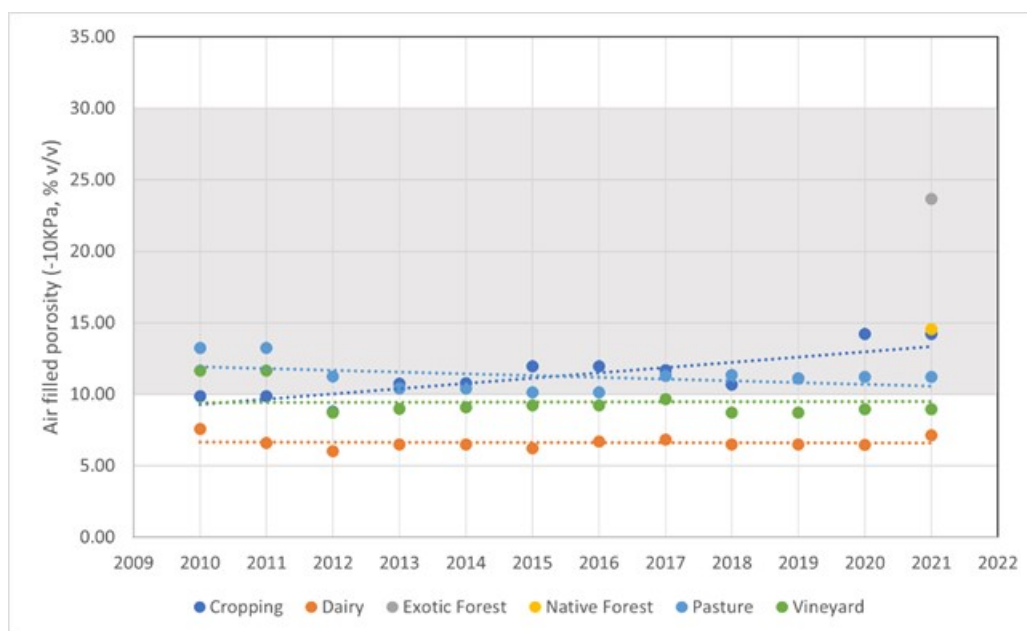


Figure 1: Rolling 5 year average of Air filled porosity, (a measure of soil compaction) for all soil quality sites in Marlborough. Minimum level for exotic forest is 8%, other land uses 10%.

The Soil Quality monitoring programme is currently being updated to ensure data quality and reporting meet the National Environmental Monitoring Standards. Primarily this includes automated receipt of data from laboratories and automated data handling during the reporting phase.

Council currently holds a contract with Manaaki Whenua Landcare Research to update Marlborough's soil mapping onto their S-Map platform. Many of Marlborough's soil maps are based on legacy data and this subject has been presented to the committee recently. An ongoing programme is in place to bring the provinces soil mapping up to a more modern standard to improve decision making around soil and nutrient management, highly productive land, wastewater discharges and irrigation allocation.

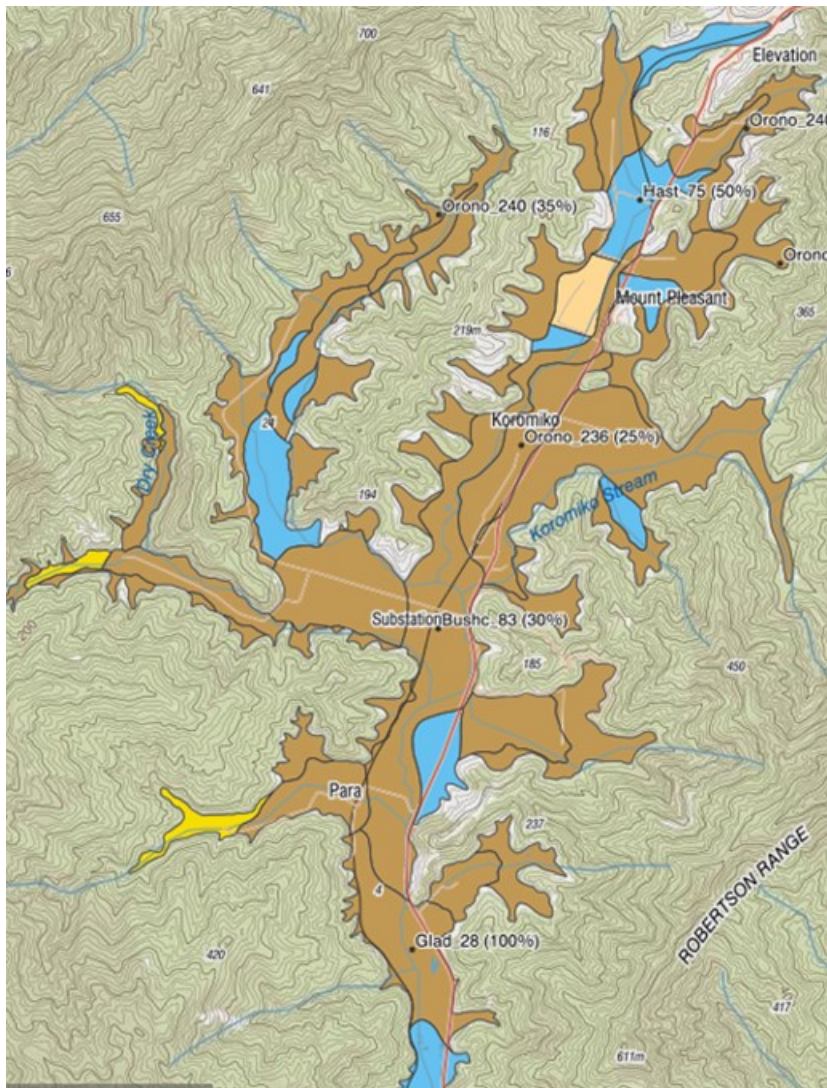


Figure 2: The recently updated S-map soil map for Koromiko Valley. Prior to updating only a single soil order was identified in this area. Now 4 orders and 23 siblings are mapped as present.

Current mapping programmes include the Wairau Valley area, Blind River and Flaxborne area. The Marlborough Sounds valleys have recently been uploaded to S map with improved soil mapping and attribute data. The Land Resources programme contributes actively to the mapping programme by collecting existing Council information on soils, developing new soil-landscape models and the provision of in-kind soil mapping skills and resources. Future work for this workstream includes development of digital soil mapping methodologies for hill country in both the Marlborough Sounds and South Marlborough, evaluation of erosion risks in North Marlborough.

Spatial Tool Development

(E355-004)

Until 2017, Council had very limited land management capacity and capability. Since that time the Hill Country Erosion, Catchment Care and Te Hoiere Project programmes have increased land management capability and workloads. With this renewed emphasis, a conscious decision was made to utilise new technologies rather than rely on paper-based mapping and reporting for these projects. As a result, Council has developed several significant GIS-based spatial tools to facilitate work and reporting. These tools include Catchment Condition Surveys, funder reporting dashboards and customer relationship management dashboards. It is now possible for a Catchment Care officer to visit and map a property, commission mitigation work and receive proof-of-work images and invoices from a landowner ahead of reimbursement and report to funders all in digital format.

Spatial tools have also been developed to identify biophysical components of landscapes primarily using lidar data. These tools have been used for projects such as refining slope measurements, identifying potential debris flow pathways and land use capability classification. This part of the Land Resources programme is very active and currently includes projects such as characterising river geomorphology ahead

of improved river management and catchment planning for the Te Hoiere Project, identifying debris flow risks within the Marlborough Sounds, and providing identification off highly erodible land and critical source areas ahead of water quality mitigations.

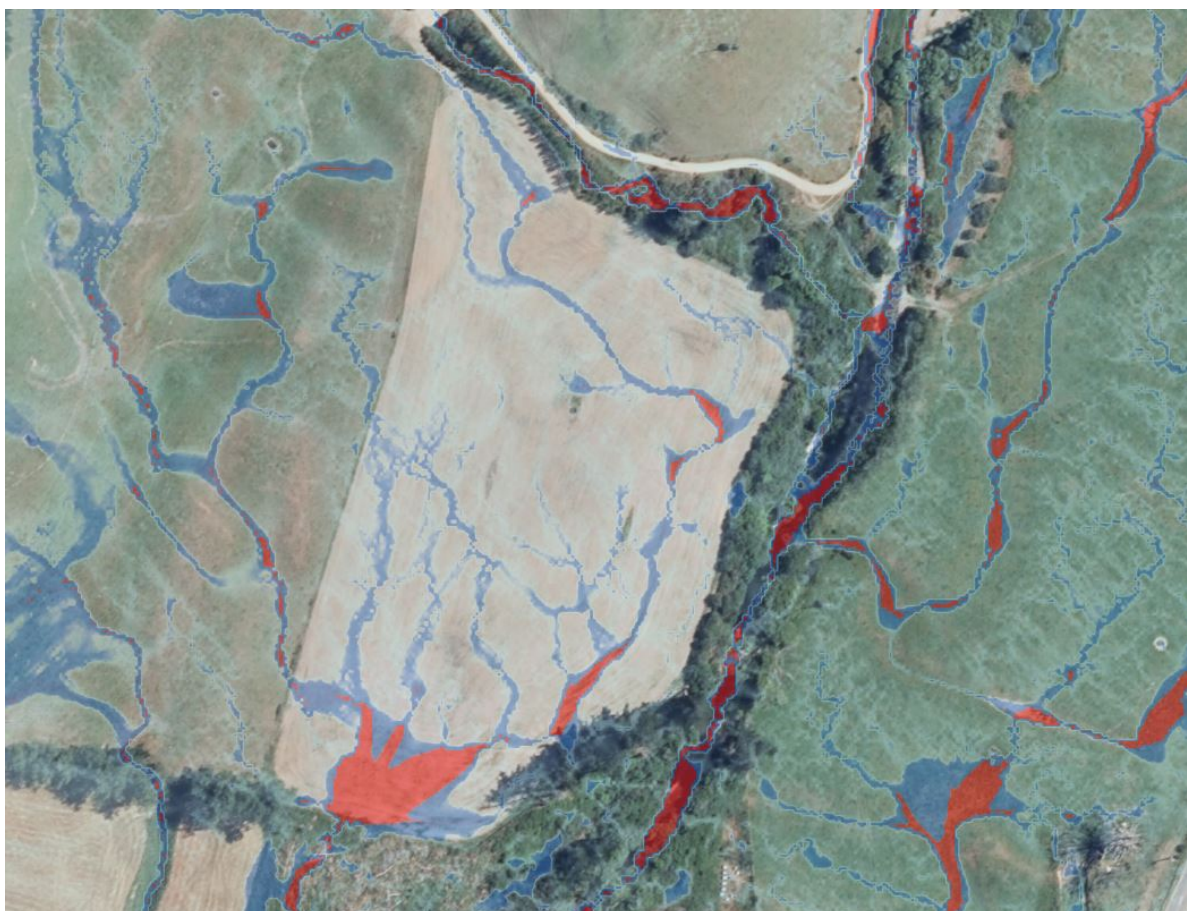


Figure 3: Surface waterflow characterised using LiDAR data and a topographic wetness index algorithm. Clearly identifies surface waterflow pathways and locations of accumulation. Where surface water flow enters streams (critical source areas) are important locations for placement of mitigations such as riparian buffers, detainment bunds etc. Red denotes increasing depth of water.

Since the receipt of Marlborough's LiDAR data, the use of GIS-based spatial tools has rapidly increased our understanding of Marlborough's landforms and will lead to a much-improved understanding of both soils and risks to freshwater. Future work with this part of the programme will include improved digital river networks, clearer identification of sediment sources, prioritisation of micro-catchments for water quality mitigation and soil-water quality interaction modelling. The updating of legacy data sets such as LUC (Land Use classification) also falls under the Spatial Tools workstream.

Catchment and Nutrient Management (E355-021 & E355-004-007&009)

The Land Resources programme provides advice to catchment officers and throughout Council. This advice includes assessment of required water quality mitigations, provision of advice to landowners, and interpretation of science and regulation to the wider community. A current example is work on the upcoming Freshwater Farm Planning and Highly Productive Land regimes. The Land Resources programme is currently involved in work with MfE to help implement these regulatory frameworks. This input enables a Council voice to be heard at Ministry level and will improve councils understanding of the regulation when they are gazetted.

Council is responsible for consenting of wastewater discharges of land. There are approximately 36 large wastewater discharge consents active across Marlborough mostly from winery waste disposal operations. The Land Resources team provides advice to consenting and monitoring officers around the management of these discharges. Future work in this field will include the assessment of cumulative effects of such discharges on water bodies.

Catchment Management

(Report prepared by James Mills-Kelly)

Hill Country Erosion Fund

(E355-019-004)

The recent experiences in the North Island have reminded us of the importance of resilient hill country in reducing silt and sediment loading to waterways during weather events, as well as protecting the productivity of the rural economy. The Hill Country Erosion Fund (HCEF) programme funds intervention works on farms to prevent the loss of topsoil and reduce sediment entering waterways in Marlborough's hill country. The programme, funded jointly by MDC and MPI, provides assistance and funding support to landowners looking to treat eroding or erosion-prone land through the use of retirement of eroding land from grazing, pole planting, and native reversion planting. We also provide information on alternative site-specific treatment methodologies where necessary. The Hill Country Erosion fund is the fence (or tree) at the top of the cliff, rather than the ambulance below.

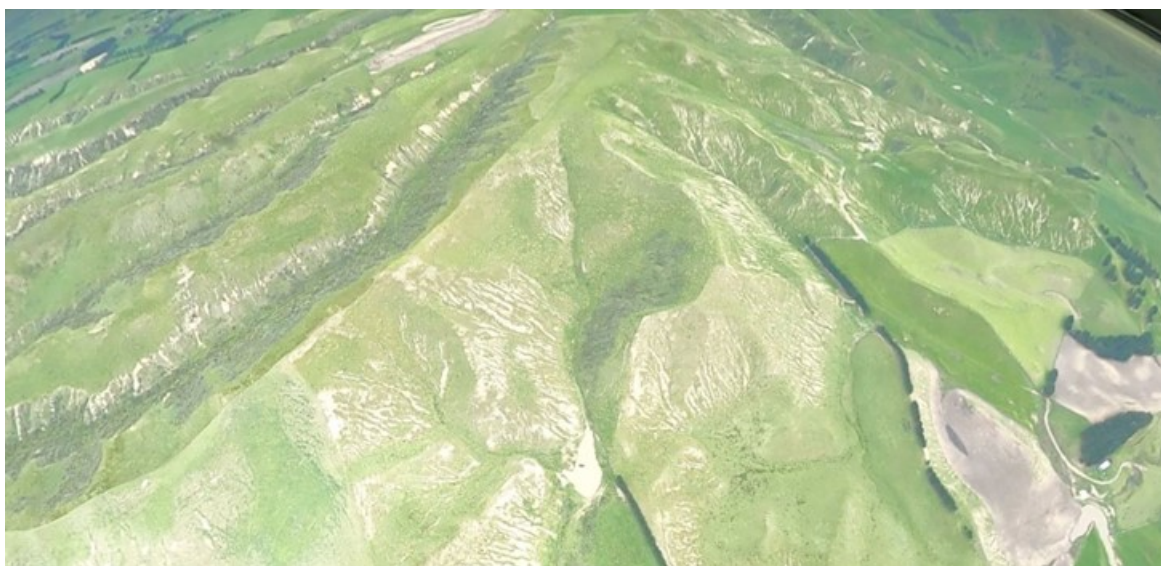


Image 1: Erosion at Kaka Ridge identified during aerial survey.

Last year HCEF delivered:

- 36,875 native plants for erosion control on permanently retired farmland;
- 6,550 poplar and willow poles for space planting on eroding pastoral land;
- 7,300 exotic trees (oaks and dryland eucalypts) for space planting and erosion control woodlot trials on particularly challenging faces; and
- 6.1kms of retirement fencing permanently excluding stock from unsuitable grazing land.

The programme has so far supported over 100 landowners across the region to address erosion on their farms, with new enquiries being received constantly. The majority of this work was undertaken in South Marlborough dry east-coast hill country.



Image 2: Space planted poplars on eroding hill country in Grassmere.

Good winter rains resulted in good growth and high survival rates in what can be very challenging South Marlborough environments. Interest from landowners in engaging with the HCEF Programme continues to grow exponentially, as increased awareness of freshwater issues and a focus on catchment management leads landowners to address sedimentation issues at the source. Expressions of interest in engaging with the programme this winter are still being accepted.

Plantings and retirement continue to increase each season, and some promising commitments are already in place for 2023, which will mark the final planting season of this funding round. An application for the 2024-2027 HCEF funding round has approved by MPI to continue this valuable work for another four years.

Environmental Science (Hydrology)

(Report prepared by Charlotte Tomlinson)

Hydrology of Marlborough Summary for January 2023 (E320-001-001)

Data from the Marlborough District Council's Environmental Monitoring network was primarily used in preparing this report and supplemented with data from sites operated by the Marlborough Research Centre, MetService, NIWA, and FENZ.

Executive Summary

Marlborough was lucky to miss the worst of the weather this month, with ex-tropical Cyclone Hale travelling down over the North Island before moving off to the east. As Hale moved east on January 11, the heaviest rainfall in Marlborough was seen around the Picton and Koromiko area, where 99 mm of rain was recorded in six hours. This led to surface flooding on roads in the area, including State Highway One.

Picton has had a wet January, with 183 mm of rain in total. Blenheim also had higher than average rainfall for January, with 60.4 mm recorded.

Despite rain early in January there was a dry period in the middle of the month, and the Waihopai and Wairau rivers both approached their average annual low flows towards the end of the month. Rainfall from the 29 January onwards provided a welcome top-up to rivers around the region.

The potential water deficit for January was -60.9 mm, which is only 57% of the long-term average. At the Grovetown Park weather station, average shallow soil moisture was 25.3%, about 5% above the long-term average.

La Niña weakened in January, with ENSO forecast to be moving into neutral territory in February. However, the lingering effects of La Niña will still be felt into the autumn months. The marine heatwave around the country continues and may lead to higher humidity levels and warmer temperatures, especially overnight. In Marlborough, more easterly onshore winds could result in increased cloud cover and cooler daytime temperatures.

Rainfall

There were widespread showers spread over three days in the first week of 2023, covering northern Marlborough, the inner sounds including Havelock and Picton, Blenheim and the lower Wairau Plains.

Ex-tropical Cyclone Hale made landfall over the North Island on the 10 January. Luckily the local impact was minimal, as it moved down the North Island and out to the east of the country before reaching Marlborough.

As Hale moved to the east on the 11 January, the heaviest rain in Marlborough was seen in those areas exposed to the east, such as the Kenepuru Head/Mt Stokes area and Mt Robertson/Tokomaru which can be both be seen in Figure 1.

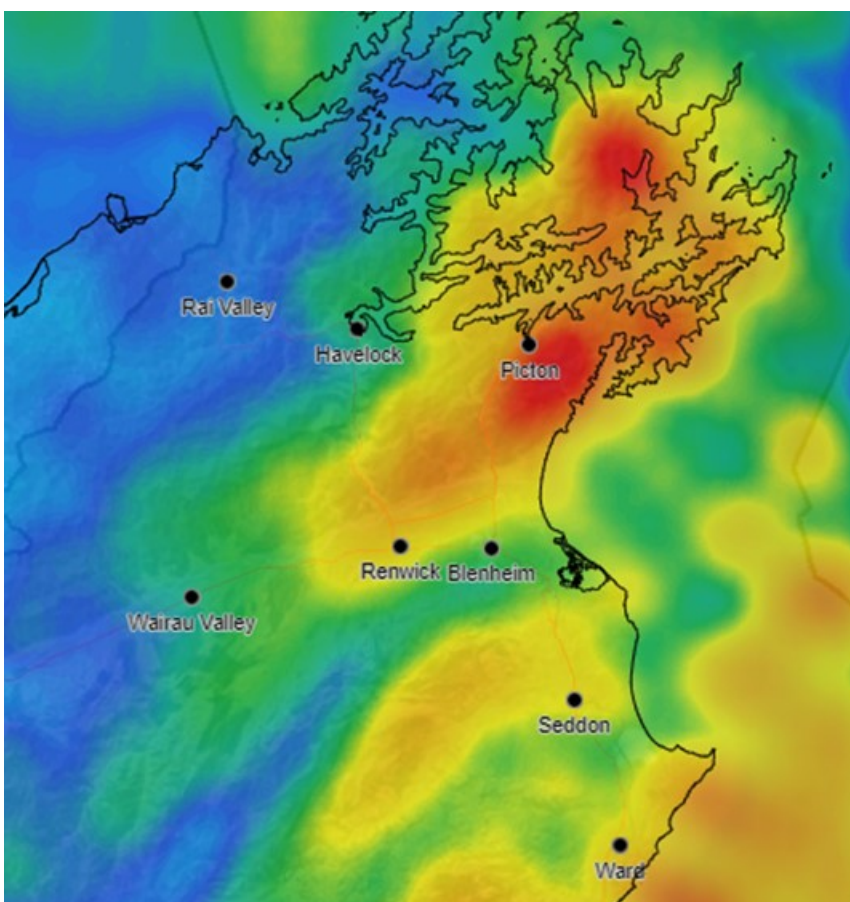


Figure 4 - MetService gauge-corrected rainfall radar estimates for 11th January 2023. Areas shaded in red show the heaviest rainfall.

The most rain recorded was in Koromiko, where 99 mm of rain fell over 6 hours with an average intensity of 16 mm/hr over that time. This led to surface flooding of roads in the area, including State Highway One which was under one-way traffic management for much of the day. Rainfall totals for the surrounding area can be seen in Table 1 below. MetService gauge-corrected rain radar estimates over 170 mm of rain fell on the 11 January at higher elevation around Mt Robertson/Tokomaru.

Table 1. Rainfall totals (6, 12, and 24-hour) for sites around the Picton area, 11 January 2023.

Rainfall site	6 hour rain total (mm)	12 hour rain total (mm)	24 hour rain total (mm)	Peak intensity (mm/hr)
Kenepuru Head FENZ	-	-	85	11
Picton at Waitohi Domain	-	-	82	12.5
Waikawa at Boons Valley	91	121	-	20
Koromiko FENZ	99	138	-	17

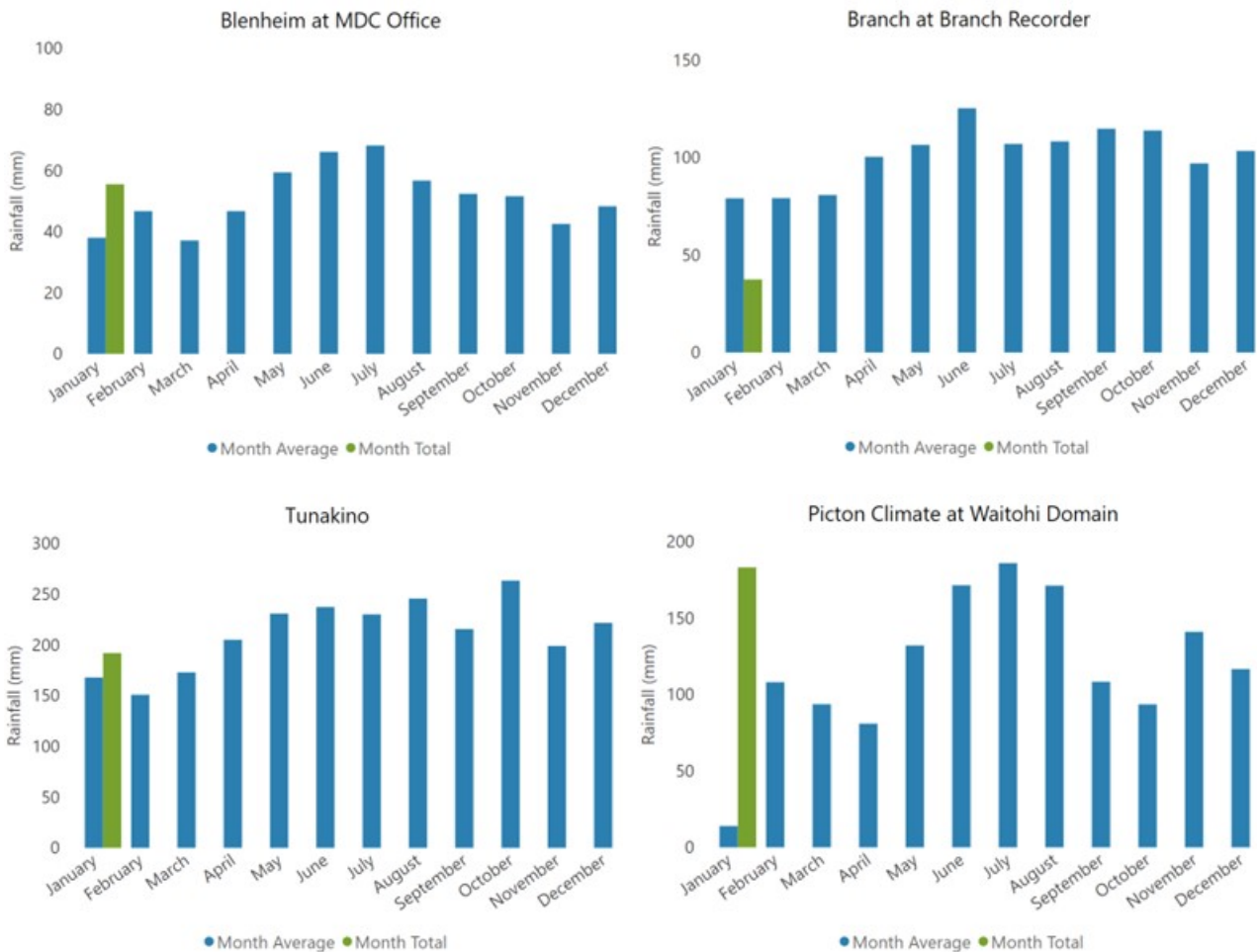
Following on from the ex-tropical cyclone were two weeks of little to no rain for the region, until the last few days of the month when again there were widespread showers with some localised heavier rainfall.

Blenheim’s rainfall total for January was 60.4 mm (data from the Marlborough Research Centre), which is 146% of the long-term-average. This is in contrast to the last 4 years which all had a fairly dry January, with less than 10 mm of rain recorded in January 2019, 2020, 2021, and 2022.

Picton had high rainfall this month, with 183 mm of rain, while Waikawa recorded 243 mm, which is three times the January average at this site of 83 mm.

January rainfall totals for 6 representative sites – Blenheim, Branch, Tunakino, Picton at Waitohi Domain, Awatere at Awapiri, and Flaxbourne can be seen in Figure 2. A full list of rainfall totals for all sites in Marlborough can be seen in Table 2.

Figure 5 - 2023 monthly rainfall totals from 6 key sites around Marlborough, compared to average monthly rainfall totals.



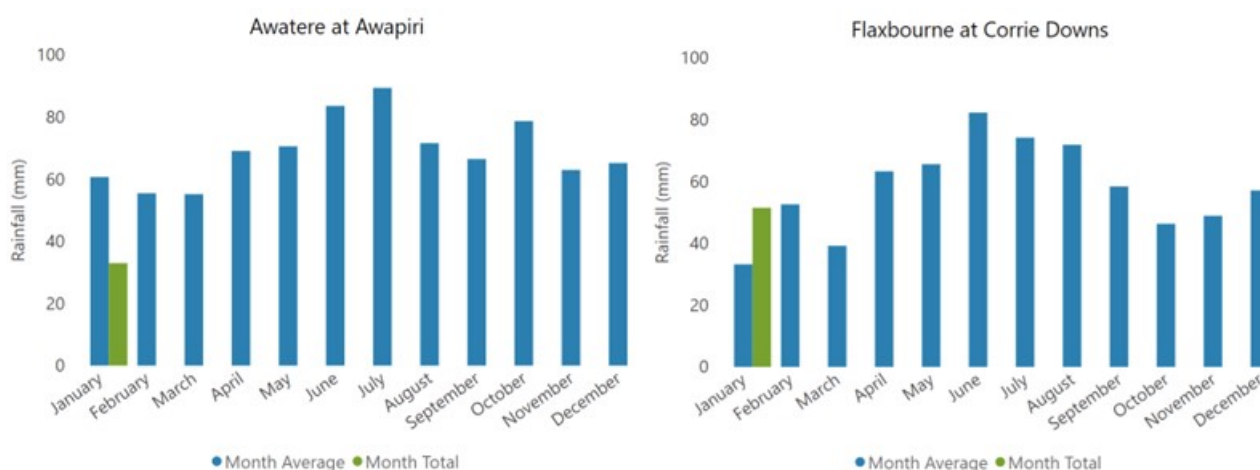


Table 2 - January 2023 rainfall totals (mm) at rainfall monitoring sites in Marlborough

Site	January	Site	January
Awatere at Awapiri	33	Rai Valley NRFA	188
Awatere Glenbrae NRFA	50	Rarangi at Driving Range	71
Beneagle at Farm Stream	75	Red Hills	46
Blenheim at MDC Office	56	St Arnaud NRFA	42
Branch at Branch Recorder	38	Taylor at Taylor Pass Landfill	53
Flaxbourne at Corrie Downs	52	Taylor at Tinpot	93
Kaituna Rainfall at Higgins Bridge	101	Te Rapa	52
Kenepuru Head NRFA	179	Top Valley at Staircase Ridge	71
Koromiko NRFA	233	Tor Darroch NRFA	36
Lake Elterwater Climate	67	Tunakino	192
Lansdowne NRFA	42	Upper Clarence NRFA	20
Malings	14	Waihopai at Craiglochart	21
Mid Awatere Valley NRFA	25	Waihopai at Spray Confluence	19
Molesworth NRFA	18	Waikakaho	86
Omaka at Ramshead Saddle	65	Waikawa at Boons Valley	243
Onamalutu at Bartletts Creek Saddle	81	Wairau at Narrows	43
Onamalutu at Hilltop Road NRFA	110	Wairau Valley at Southwold	41
Picton Climate at Waitohi Domain	183	Wakamarina at Twin Falls	96
Pudding Hill NRFA	60	Ward NRFA	36
Rai at Rai Falls	145		

River Flows

The Wairau River at Barnetts Bank began the year at around 35 m³/s, steadily declining until two rain events on January 7 and 12, which both brought flow up above median flow (60 m³/s) for a short time. River levels continued to decline to the end of the month, approaching the MALF (mean annual low flow) of 12 m³/s on the 29 January, before beginning to rise again with the rainfall at the end of the month.

The Waihopai and Awatere rivers both had several small spikes in flow throughout the month, caused by thunderstorms bringing heavy localised rain to upper parts of the catchments. The Waihopai River was approaching the MALF towards the end of the month before flows increased with rainfall from the 29 January onwards.

The Pelorus and Rai rivers both had a small fresh early in January, with declining flows through the rest of the month until flows began to rise again on the 30 January.

A summary of river flows for January 2023 can be seen below in Table 3.

Table 3 - A summary of river flows in Marlborough for January 2023.

River	Site	January mean flow 2023 (m ³ /s)	January mean flow all records (m ³ /s)	% of monthly average	Records begin	Catchment area (km ²)
Pelorus	Bryants	9.95	13.60	73	1977	375
Rai	Rai Falls	8.66	7.26	119	1979	211
Kaituna	Higgins Bridge	2.01	1.51	133	2006	133
Branch	Intake Weir	6.71	18.33	37	1958	550
Wairau	Barnetts Bank	27.43	69.56	39	1960	3,430
Ohinemahuta	Domain	0.41	0.51	81	1998	33
Waihopai	Craiglochart	4.49	8.92	50	1960	764
Awatere	Awapiri	7.44	9.48	79	1977	987
Omaka	Gorge	0.42	0.53	79	1994	90
Taylor	Borough Weir	0.29	0.22	136	1961	64
Flaxbourne	Corrie Downs	0.04	0.07	67	2003	70

Soil Moisture

The potential water deficit in January was -60.9 mm (60.4 mm of rainfall minus 121.3 mm potential evapotranspiration). This water deficit is only 57% of the long-term average (LTA), which is -106.6 mm (MRC Data).

At the Grovetown Park weather station, average shallow soil moisture was 25.3%, well above the LTA of 20.6%. Shallow soil moisture oscillated throughout the month, increasing with rainfall in early January to a maximum of 30.6% on 7 January. Minimum shallow soil moisture was 20.7% following on from a dry spell between the 12th – 27th (MRC data). The soil moisture deficit at the end of January can be seen below in Figure 3, while the soil moisture anomaly in Figure 4 shows Marlborough soils have about normal soil moisture for this time of year.

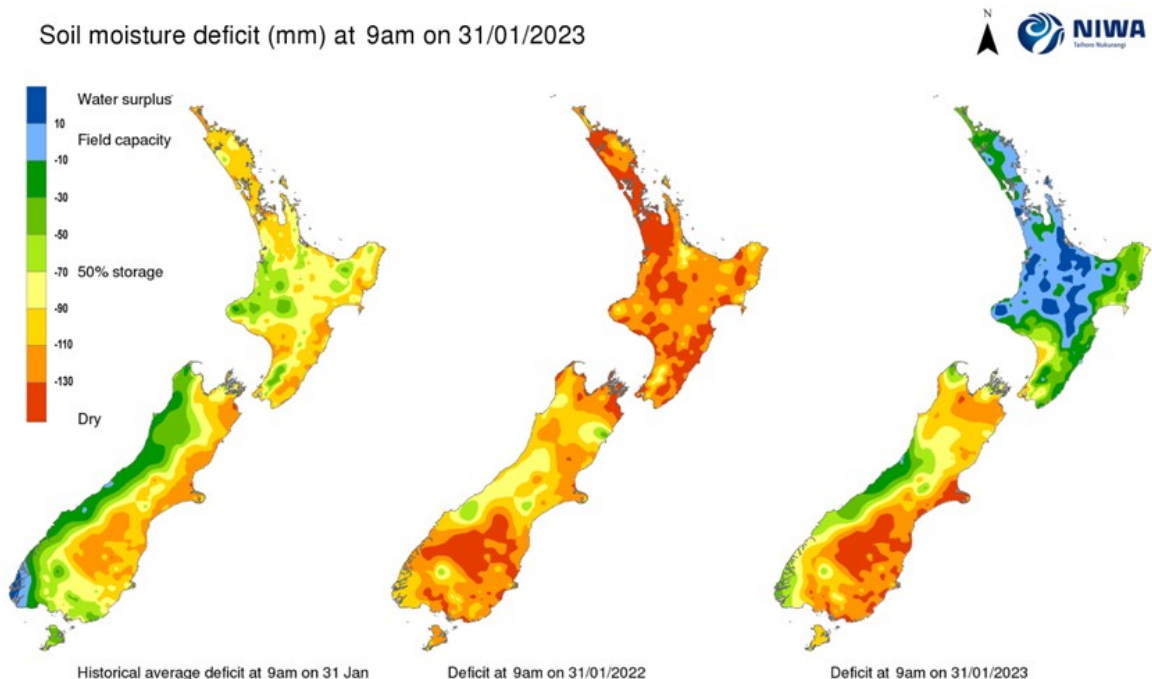


Figure 6 - Soil moisture deficit maps of New Zealand, retrieved from NIWA on 31/01/2023.

Soil moisture anomaly (mm) at 9am on 31/01/2023

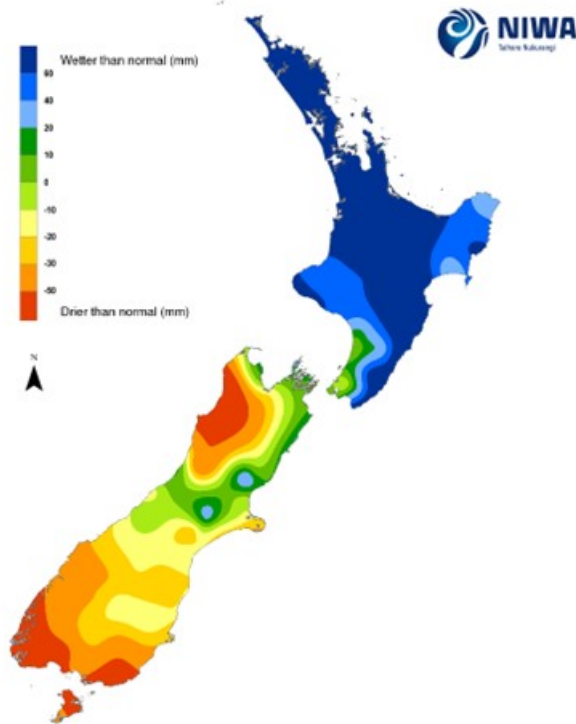


Figure 7 - Soil moisture anomaly map of New Zealand, retrieved from NIWA 31/01/2023.

NIWA Seasonal Climate Outlook February – April 2023

The El Niño Southern Oscillation (ENSO) looks to be moving into neutral territory this month as La Niña weakened throughout January. However, the lingering effects will still be felt going into the autumn months.

Sea surface temperatures around the coast were between 0.7°C - 3.2°C above average last month, with the marine heatwave reaching record levels along the west of the South Island.

Air pressure is forecast to be higher than normal over the South Island, expected to be associated with an east to north-east air flow anomaly for the season as a whole.

The marine heatwave may lead to higher humidity levels and warmer temperatures (mostly overnight), however especially in Marlborough, more easterly onshore winds could result in increased cloud cover and cooler daytime temperatures as well.

Occasional tropical plumes of moisture will increase the risk of heavy rainfall, reducing the chances for a dry summer season.

The predictions for Marlborough/Tasman from February to April are:

- 🌡️ Temperature – near or above average
- ☁️ Rainfall – near or above average
- 🌱 Soil Moisture – near average
- 🌊 River Flows – near average

Freshwater Science

(Report prepared by Steffi Henkel)

River and Stream Monitoring

(E375-003-001)

The Environmental monitoring team takes monthly samples from rivers and streams across Marlborough as part of the State of the Environment monitoring programme. A recent monitoring review identified several areas of the region for which we currently hold no or very little information about river health. As a result, several sites were added to the programme, including the Medway and Grey Rivers in the Awatere catchment as well as new sites along the Wairau and Waihopai Rivers. However, monitoring of one area of Marlborough, the Clarence catchment, is comparatively problematic due to its remoteness and limited road access.

The Clarence River catchment is unique as it is only partly located in Marlborough. Most of the lower river catchment is in the Canterbury region. There is currently no or very little information about river health in the parts within the Marlborough region as roads into these areas are often closed either due to snow or fire risk. The area is dominated by extensive sheep and beef farming and is home to the country's largest farm, Molesworth stations.

The Acheron River is the main tributary of the Clarence River within the Marlborough region and monitoring staff will take monthly river water quality samples from sites located mainly within the Acheron catchment. Monitoring will continue until roads close again. The results of this sampling will be the foundation for the planning of future river monitoring in this area.

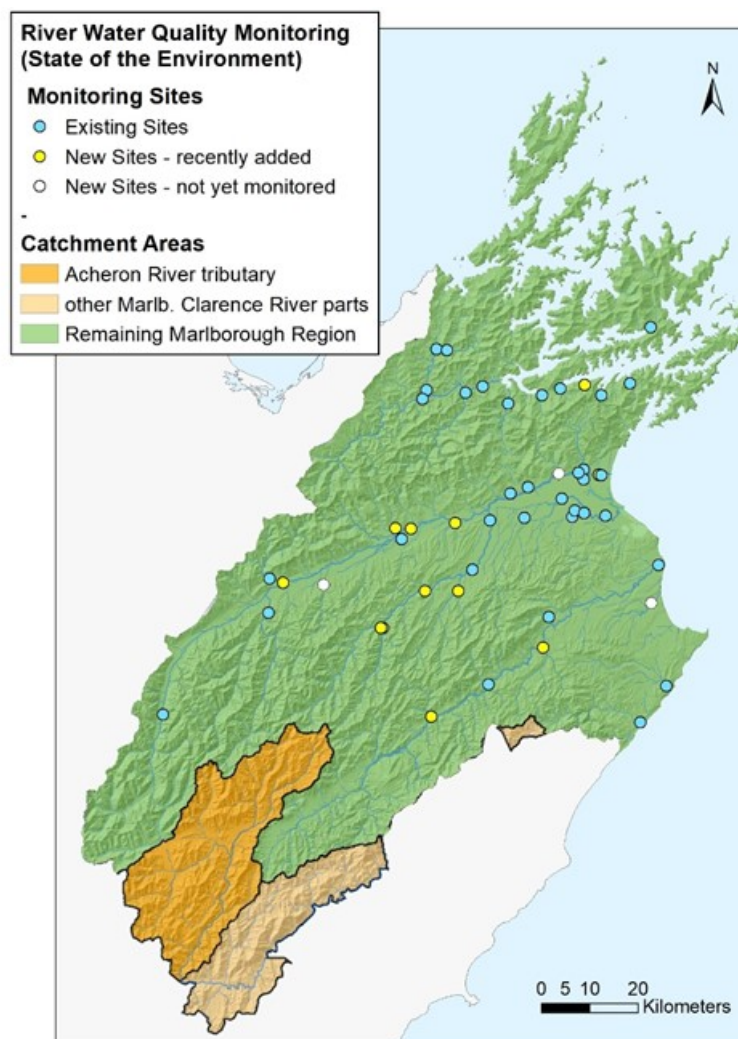


Figure 1 - Existing and new State of the Environment River Health Monitoring sites. The Marlborough Clarence River catchment is shown in orange with the darker orange indicating the Acheron River sub-catchment.

Lake monitoring

(E375-003-001)

The National Policy Statement for Freshwater Management (NPS-FM) requires the regular monitoring of lakes in every region. The Marlborough region has comparatively few lakes and until recently, Council did not have a lake monitoring programme.

Since the beginning of last year, two lakes are monitored monthly to fulfil the requirements of the NPS-FM. These lakes are Lake Elterwater and Grovetown Lagoon. Other lakes are located in remote areas of the region and monthly monitoring would require a comparatively large amount of funding. However, we have currently insufficient information to determine attribute states for these lakes as required by the NPS-FM. Council will therefore carry out one-off baseline monitoring of these remote lakes which is planned for late February/early March this year. If this monitoring shows the lakes to be comparatively healthy due to limited stressors, monitoring requirement can be significantly reduced.

Toxic Algae in Rivers and Streams

(E370-005-001)

After a comparatively wet start to the summer, periods of more settled and warmer weather are becoming more frequent. This results in lower river and stream flows as well as warmer water temperatures, which provide ideal conditions for algae growth. However, some algae can pose a risk to the health of people and their dogs. The only toxic algae known to presents a serious health risk is *Phormidium*. Unfortunately, this alga grows on the bed of many streams and rivers across the region.

The science around why the algae occur in some areas, but not others is still very unclear. We simply do not know the triggers that causes the toxic algae to outcompete other algae at some sites, but not others. For this reason, we do not know where the algae might bloom or when. Because we cannot survey the entire stream and river network of the region for toxic algae, we cannot aid the public by putting up warning signs at all affected areas. Additionally, warning signs can cause a false sense of security if they are seen in some places, but not others. This can result in the assumption that river sites without signage are safe. Therefore, we rely on the public to look for the algae at the river sites they visit with their dog(s) and/or family and choose a different site should the algae be present.

A media release about *Phormidium* will be published this month. The intention of the media release is to inform the public and ask people to familiarise themselves with what the algae look like and keep an eye out for it.

The following sections answer some of the most commonly asked questions about toxic algae.

What does it look like?

Phormidium forms thick, brown or black mats on rocks in the river bed. The algae mats have a velvety appearance and can become detached from the rocks. Loose mats often accumulate along the water's edge, where they decay releasing a musky odour.



Figure 2 - Examples of *Phormidium* mats in the Wairau River (left) and the Omaka River (centre and right).

The MDC website has a video and pictures to assist with identification of the algae:

<https://www.marlborough.govt.nz/recreation/swimming-and-boating/toxic-algae>

Where is it found?

Phormidium occurs naturally and is wide-spread. It is mainly found in the fast flowing, shallow parts of streams and rivers. *Phormidium* blooms can form in rivers with a range of nutrient concentrations (Figure 2), but these algae do not thrive at very high nutrient levels. Therefore, *Phormidium* blooms are not necessarily a sign of poor water quality.

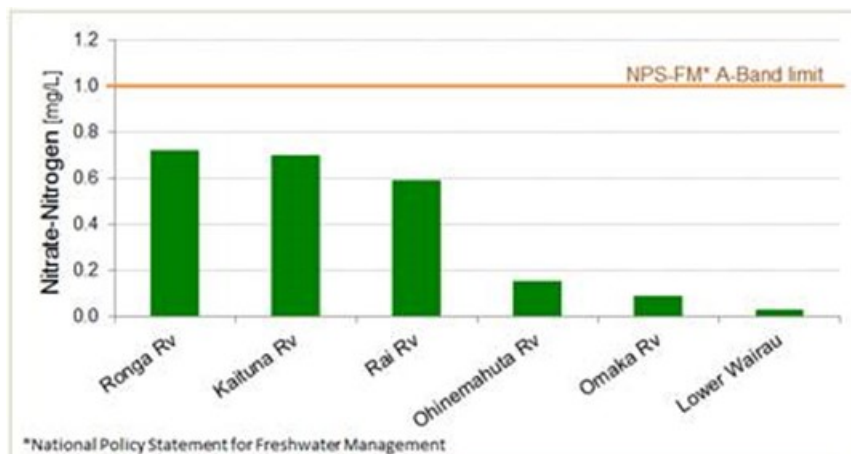


Figure 3 - Median Nitrate-Nitrogen concentrations in some of the rivers where *Phormidium* blooms have been found in previous summers.

What are the health effects?

Although some of the toxin is released into the water, concentrations are generally too low to cause any symptoms. The greatest risk to humans and animals is from accidental ingestion of the algae mats. Dogs are particularly at risk, because they are attracted to the musky smell of the algae. A relatively small amount (slightly larger than a two-dollar piece) can be lethal for dogs. There have been several dog deaths in the Nelson/Tasman and Wellington region. If an animal shows symptoms such as panting, lethargy, muscular twitching, paralysis and convulsion, it needs to be taken to a vet immediately. These symptoms usually occur within 30 minutes of ingestion.

In humans, the toxins produced by these algae can cause lethargy, skin irritation, diarrhoea and vomiting. There have been no human deaths associated with *Phormidium* worldwide. If a person is experiencing a serious reaction, they need to seek urgent medical attention and advise the doctor of potential exposure to toxic algae.

What can be done about it?

There is currently no easy or obvious solution to *Phormidium* blooms. Although blooms are more likely to occur after long dry spells, scientists are still unsure what triggers them.

It is not possible to erect warning signs at all rivers affected by *Phormidium* blooms. It is therefore important for members of the public to know how to identify these algae and take actions to prevent themselves and their animals from coming into contact with them.

The blooms will naturally disappear, either as a result of flood flows or due to changes in the algae community.

Key messages

- Know what it looks like and avoid it;
- It can't hurt you if you don't eat it;
- Dogs are most at risk.

Significant Natural Areas Programme Update

(E310-006-001)

(Report prepared by Mike Aviss)

Purpose of Update

To update the Committee on the results of the Significant Natural Areas Programme midway through the 22/23 Financial Year.

The output of the programme was reduced by the effects of long covid in the crew however the work has continued, including:

- Monitoring of seven existing sites.
- Assisting landowners with fencing of 6 SNAs.
- Weed control in SNAs on seven properties.
- Tree planting in SNAs in seven properties.
- The total number of SNA sites mapped in our database has is now 775, up 4 sites.
- Seed collection for the year has started in earnest now with matai fruit currently falling into our nets in the upper Wairau.
- Restoration of the coastal dune SNAs on the East Coast south of Marfells Beach.



Image 1: A Marlborough Boys College planting team planted 1000 native trees into the marram grass behind the beach at Cape Campbell, September 2022.

Listed Land Use Register (LLUR) Dashboard Project

(E355-005-000)

(Report prepared by Jorgia McMillan)

Council is required to follow the National Environmental Standard for Assessing and Managing Contaminants in Soil to Protect Human Health Regulations 2011 (NESCS) which requires the maintenance of an electronic

database of information about properties within the region that have either currently or historically been used for HAIL activities.

Contaminated Land (CL) needs to be managed to protect people and the environment. Hazardous substances in soil (contaminants) can have significant adverse effects on human health and on the quality of soil and water resources.

To enable the Marlborough District Council to store, manage and effectively use information about contaminated land an electronic database called the Listed Land Use Register (LLUR) was created. This data base allows land that is, has been, or more likely than not to have been associated with the use, storage or disposal of hazardous substances to be recorded. LLUR is an access database that is integrated with other Council applications, e.g., Property and Rating database and linked to GIS (Geographic Information Systems). The register holds a range of information including a site number, a site name, category classification, brief site description, physical site address, contact details, property number and location (GIS point or polygon).

An ongoing project for some time now has been a systematic review of Councils records, aerial photographs and any published records for every property in the Marlborough region. This is being undertaken to assess the likelihood of activities or industries occurring on the land which could *potentially* result in soil contamination and therefore *potentially* cause harm to people and the environment. This is in response to our obligation under the Resource Management Act 1992 to investigate, identify and monitor contaminated land to safeguard human health and the environment. A similar approach is underway by Council's throughout New Zealand. With this knowledge, Council is prepared for when land use change occurs on a property and to assess whether the NES is triggered in relation to this land use change.

Currently there are 2,834 properties on LLUR that have been classed as Verified HAIL and Unverified HAIL which is when information is still being finalised. In order to keep track of the progress on property assessments in Marlborough and to have some direction, a dashboard was created to display the statistics on the CL assessments and four zones have been marked as a priority to have fully assessed as soon as possible, these are:

- Urban Growth Areas
- Industrial Zones
- Future Residential Development Areas
- Business Zones

The dashboard was created in November 2022 and at that time as shown by *Figure 1* - 3,195 properties had either been fully or partially assessed over the years (11.6% of properties Marlborough). By February 2023 this number has increased to 3,569 properties (12.92%). This is great progress as the number of properties registered as Data Quality 300+ (meaning a full assessment has occurred and landowner notified) went from 2,381 properties to 2,613 properties in less than three months.

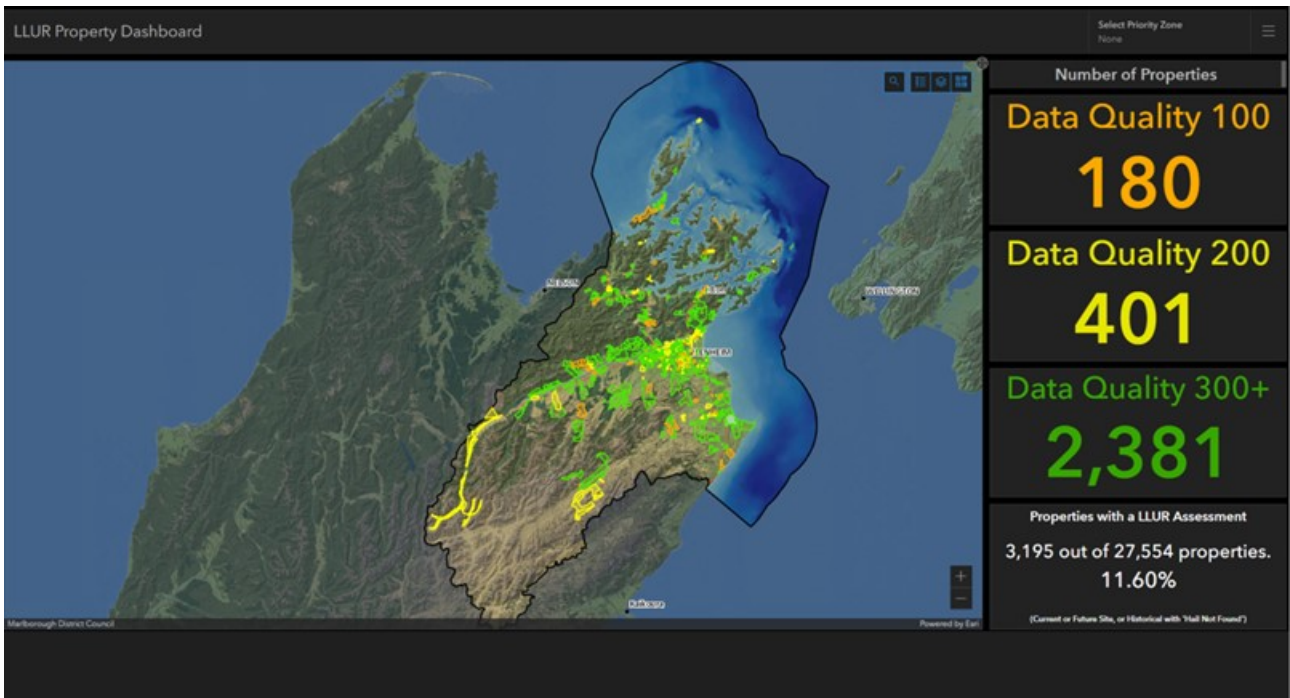


Figure 1. November 2022 Dashboard Overview

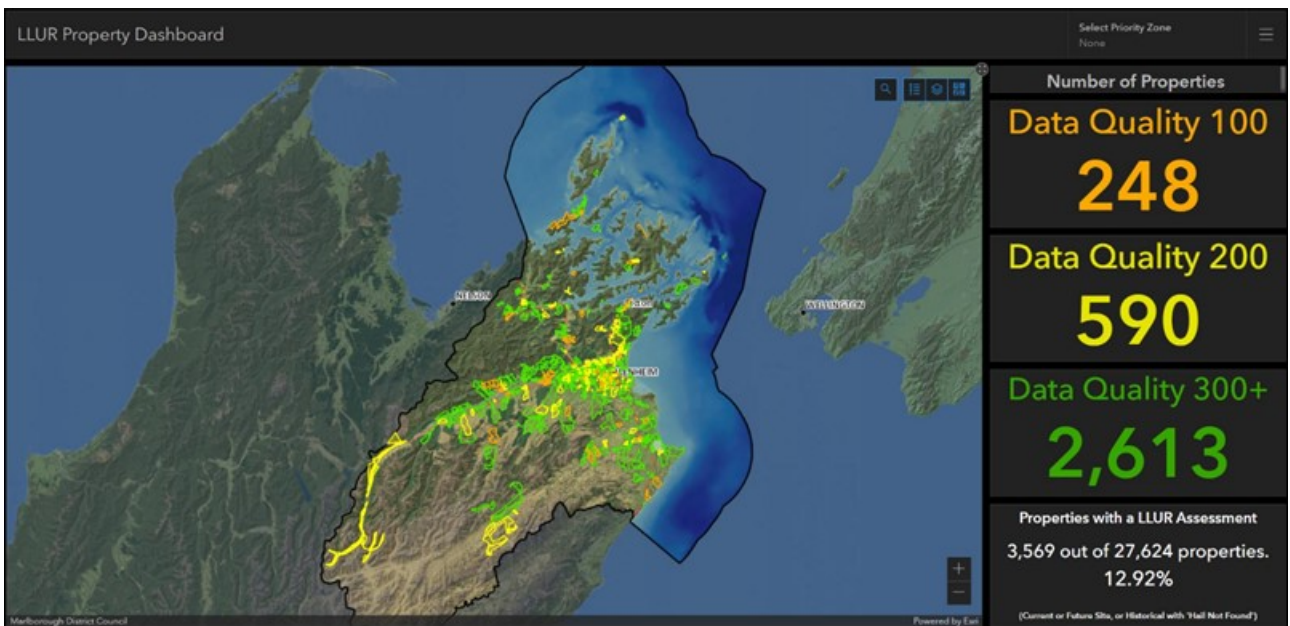


Figure 2. February 2023 Dashboard Overview

Nautical and Coastal Team

(Report prepared by Oliver Wade.)

Coastal Science Updates:

Water Quality State of the Environment (E325-002-001)

Monthly water quality monitoring of Totaranui/Queen Charlotte Sound, Kura te au/Tory Channel and Te Hoiere/Pelorus Sound continues. This summer has been characterised by heatwave conditions with temperatures well above the long term average. Many phytoplankton blooms have been observed and reported this summer in the Sounds which are likely due to a combination of higher than usual water temperatures and higher than usual rainfall.

Ecologically Significant Marine Site Monitoring

(E325-002-004)

Summer fieldwork is underway with monitoring focussing on understanding biodiversity at sites on the seafloor of Totaranui/ Queen Charlotte Sound using an ROV.



Image 1: Galeoalaria hystrix tubeworm mounds at ESMS 4.14 – Pihaka Point near Picton/Waitohi.

Intertidal Monitoring

(E325-002-002)

DC staff have been navigating our muddier areas of Marlborough to monitor the deposition of sediments in our estuaries. Broad and fine scale monitoring of Whangarae Estuary will take place next month.



DRAFT MINUTES

Marlborough Landscape Group

Friday 10 February 2023, 1pm, Merlot Room, Chateau Marlborough

Present: Cllr Raylene Innes (co-chair), Tim Newsham, (co-chair), David Dillon, Helen Ballinger, Chris Beech, Mondo Kopua, LinLin Yang, Cllr Barbara Faulls, Jan Richardson, Alan Johnson, Pete Hamill, Bev Doole (co-ordinator), Sarah Leighton (Secretary MDC)

Apologies: Jan Johns, Richard Hunter, Kaz Holland

Welcome: Tim Newsham, co-chair

Marlborough Roads presentation on weed control – Simon Smith

Simon introduced himself. He has experience in Council compliance and is now the Environmental advisor for Marlborough Roads. He was invited to speak to the Group as part of the MLG Go Green not Brown workstream, to reduce the use of herbicide in Marlborough.

Points from his presentation:

- Marlborough Roads is contractually obliged to carry out weed reduction and spraying as part of the Waka Kotahi contract requirements. This includes mowing and spraying.
- They are governed by nationally legislated roading standards.
- Key issues are the need to maintain visibility of road signs and sightlines for drivers, stop roots cracking up seal, maintain drains to flow freely and prevent flooding, control growth to reduce fire risk
- They are three years into contract and are investigating performance and any changes that could be implemented. This includes spraying and mowing and looking at what could be done differently to reduce spray use, eg. not around taller signs
- In the contract there is a list of no spray zones they must adhere to
- Erosion where weeds sprayed off can lead to blocked drains – this is under review and could look at hydroseeding bare ground.
- Noted that planting everywhere that they currently spray is not cost effective.
- Advised that nationally there are parties actively looking into alternatives to spray.

The Group is keen to see less spraying and more acceptance of natural plant growth along roadsides where it is not a safety issue. Simon will take these comments back to Marlborough Roads.

Confirmation of Minutes of Previous Meeting, 11 November 2022 - approved.

Actions and matters arising from previous meeting 11 November 2022:

Action Point	To do	Who
1.	<p>Send letter to Jane Tito, Manager Parks and Open Spaces, about reducing spraying at Council reserves A letter has been sent to Jane. She will be invited to the April 2023 meeting to report on progress. Ongoing</p>	Bev
2.	<p>Seek opportunity to present to the Primary Producers Forum (Gerald Hope) about the Landscape Group and encourage on-farm plantings Gerald advised that the forum meets twice a year. He will be in touch when the next meeting is organised. Ongoing</p>	Bev
3.	<p>Finalise letter to boards of trustees to encourage retaining trees on school grounds. Send to group for approval To be actioned late February 2023</p>	Bev
4.	<p>Give presentation on soil carbon sinks to the February 2023 Landscape meeting Attending a further workshop this month, so will have more to share at the next meeting. On the Agenda for April 2023</p>	LinLin
5.	<p>Provide an update on the national policy statement for indigenous biodiversity once it is released. Has been deferred, Government have not advised when this will be released. Ongoing</p>	Alan
6.	<p>Connection with iwi – arrange June 2023 meeting with MDC Māori ward councillor and Kaihautū Richard hopes there will be more progress on Wairau River Regional Park Plan to be able to discuss with them. Ongoing</p>	Richard
7.	<p>Carbon Forestry submission to MPI process Circulated. Completed</p>	Bev
8.	<p>Circulate 2023 meetings dates. Circulated, group is happy for Friday meetings. Completed</p>	Bev
9.	<p>Send briefing to new Marlborough Airport Ltd board on Group's concerns about the new carpark. Letter sent and response has now been received from the Board chair stating that resource consent has been granted and all trees will be removed. Completed</p>	Bev
10.	<p>Follow up with Richard Coningham on recruitment of a new project manager for the Wairau River Regional Park Plan Position not filled. Going through recruitment phase. The position has not been advertised. Clr Innes to advise of</p>	Clr Innes

Action Point	To do	Who
	any updates. Ongoing	
11.	Wither Hills farm park review consultation Helen, Richard and Chris have met with Paul McArthur. The Plan is being worked on at Council in preparation for public consultation. No timeline at this stage. It was noted that the discussion document phase would be a good place for this group to have input. Ongoing	Bev
12.	2023 Group membership - Let Bev know if you wish to stand down from the group. No resignations received. Tim to continue as co-chair to be reviewed annually. Completed	All members

Correspondence

In: Primary Producers Group meeting; Rema Reserve tree decision and comments; reply from Marlborough Airport Ltd

Out: Feedback to MPI re carbon farming; Briefing paper to new directors on Marlborough Airport Ltd; Submission on rata tree.

1. Work Streams

- **Climate Change:** *Advocate for more tree planting to mitigate the effects of climate change: capturing carbon, providing shade and protecting biodiversity. Greening Blenheim bush area. Helen, Chris, LinLin, Richard, Jan J, Jan R*

Jan raised the need for more indigenous planting in Blenheim. She attended a biodiversity workshop in Nelson where Professor Bruce Clarkson from Waikato University spoke about the People, Cities, Nature programme in Hamilton and the benefits of native plants for a healthy environment and healthy people. It is noted that Blenheim was at 2% canopy cover and we need at least 10% for a healthier environment. The recent flooding in Auckland highlights the need for more green spaces to absorb water, including the fact that mature tree canopy can hold up to 40 per cent water and release it slowly. Climate change is real, and it will only get worse if we do not do something now, is this enough to get people on board with more plantings in the Marlborough region?

Jan and Forest & Bird are working with the Marlborough Express on how to encourage more planting projects and the Landscape Group could get involved too. This aligns well with efforts by the group to plant a Greening Blenheim native bush area easily accessed within Blenheim.

A suggestion of plantings along Sutherland Stream may have flood control ramifications. Forest and Bird would need to approach Council about this.

LinLin suggests having Marlborough vineyards put forward donation money into a "pool" to go towards the Greening Blenheim project, in recognition of the loss of trees caused by the expansion of vineyards. Mondo said many wine companies are already involved with community projects such as plantings and wetland restoration.

- **Advocacy – connect with industry groups**
MLG representatives work as conduits enabling flow of information, concerns and solutions with industry groups. Siobhan (Forestry), David (Farming), Mondo (Winegrowing)

Mondo reported that Wine Marlborough has been encouraging entrants into the Cawthron Marlborough Environment Awards and getting growers to apply for Working for Nature grants. Successful planting applications will get under way in late autumn, after harvest. Future funding rounds will call for applications in April to give a longer timeframe for planting.

2. General Business

- MLG submissions on resource consents – Cllr Innes

Cllr Innes stated that as the new co-chair and a process person she was not comfortable with the Marlborough Landscape Group making submissions to Council. She pointed to the 2018 MLG strategy that states:

The Marlborough Landscape Group as an entity may not make formal submissions to the Council or other agencies. This does not preclude individual members or the organisations they represent from making independent submissions.

The issue arose over the Landscape Group's submission on the application for a truck park in Tua Marina and the potential effect on a rare southern rata tree.

The group had last year submitted in support of retaining a notable tree in Rema Reserve in Blenheim. MLG members pointed out that that submission was defending the Council's Tree Policy, and the MEP Notable Tree policy. The MLG was involved in developing both of those policies with staff.

Helen said the submission about Rema Reserve and advice to Marlborough Airport Board to retain established trees as part of the car park development were given as an advisory group, consistent with the Group Strategy Key Goals:

- *Protecting iconic trees and significant plantings in rural and urban settings*
- *Safeguarding landscape values throughout the region*

Currently it seems any advice the Group gives is not being heard, so do we just stay quiet and agree with everything?

Cllr Faulls noted the group's vast knowledge, and Council takes the opinions on board but unfortunately there is a term of reference in place that excludes this knowledgeable group from having a say, to avoid a conflict of interest.

Legal counsel at Council is reviewing all standing committees and sub committees and standing orders. There is concern that times have changed and Council advisory groups have to be more aware of what the terms are. Council does not want advisory groups opposing the Council.

Tim outlined three options for going forward:

- Change the MLG Strategy to allow submissions
- Do not submit where Council is the applicant
- Do not submit on any applications

The following comments from Kaz Holland, who was unable to attend the meeting, were read out and captured the views of group members:

The Marlborough Landscape Group is not an authority, i.e. we're not in a decision making position - we are an advisory group. To me, making thoughtful submissions is one of the ways to offer that advice, and shouldn't be seen as overstepping our scope. Putting in a submission means that information can be presented at a hearing in a formal way to best aid the decision maker in their

task. We have to assume whoever is making that decision doesn't know anything about the application, and can only decide the outcome based on the information presented to them.

I feel we have a responsibility within the scope of our group to advocate specifically for landscape values, and the rata tree falls under those values. We are not paid by the council, and offer our advice freely. If groups like ours are unable to submit on applications like this, then who can we rely on to be the spokesperson for these values? Respectfully, leaving it up to individuals only, and encouraging a group dedicated to these values to remain silent, seems illogical to me.

A submission doesn't have to be seen as a big deal. It is an official way to provide useful information, and the decision maker can then decide how much weight to give that information - they may give it very little. But at least it has been brought to their attention, and they are not oblivious to it.

I have read through Tim's submission [on the Tua Marina rata tree] and think it is entirely reasonable. The submission is neutral to the development and offers advice for the protection of the tree. The applicant has the opportunity to reply at the hearing, and the commissioner presiding over the hearing can ask questions and decide if the group's recommendations are useful or not.

I don't agree that we should step back and stay out of such hearings. There is a great deal of experience and expertise in this group and being silent is a huge waste of a resource that can assist in proper and informed decision making.

It was agreed that the 2018 Landscape Group Strategy should be reviewed and updated. Issues to consider are the role and purpose of the group; what Councillors and staff want from the group; work to adapt to climate change; and remove references to MLG providing funding for planting and restoration projects.

Clr Innes agreed that the submission on the Tua Marina rata tree could continue in the process.

MOTION: Start a review of the MLG strategy and develop Terms of Reference. MDC counsel Robert Foitzik will be invited to the next meeting to provide advice. *Raylene/Helen/carried.*

- Review of Council Tree Policy – Helen Ballinger
The Council Tree Policy does not apply to the removal of notable trees on private land. Helen said this needs to be reconsidered to ensure protection. It may be covered in the MEP - the Group will ask for the solicitor's view on this.

Motion: MLG have a workshop to review the Tree Policy and come up with suggested changes to discuss with Council staff. *Helen/Jan/carried.*

- 2023 meeting dates - 1pm on the following Fridays (Bev will send calendar invites): April 28, June 9, August 4, October 13, December 8
- Cawthron Marlborough Environment Awards – Good examples of community groups and businesses looking after the landscape. Awards event is on 20 April 2023 at the Marlborough Events Centre. \$45 tickets available at www.cmea.org.nz

Next meeting: Friday April 28, 1pm

Actions from this meeting:

Action Point	To do	Who
1.	Invite Jane Tito, Manager Parks and Open Spaces, to April meeting for update on progress on reducing spraying at Council reserves	Bev
2.	Invite Council solicitor Robert Foitzik to the April meeting to give guidance on Strategy review and terms of reference	Bev
3.	Send letter to boards of trustees to encourage retaining trees on school grounds.	Bev
4.	Give presentation on soil carbon sinks to the April 2023 Landscape meeting	LinLin
5.	Connection with iwi – arrange June 2023 meeting with MDC Māori ward councillor and Kaihautū	Richard
6.	Keep in touch with Richard Coningham on recruitment of a new project manager for the Wairau River Regional Park Plan	Clr Innes
7.	Approach Jane Tito and Andy White at Council about potential to plant a native bush at Rema Reserve and/or Sutherland Stream and report back to Landscape Group.	Jan/Forest & Bird
8.	Have a workshop to review the tree policy and come up with any changes. Then discuss with Jane Tito	Helen + volunteers please
9.	Invite Council Catchment Care co-ordinators to present to June meeting	Bev
10.	Send out 2018 MLG Strategy, Council Tree Policy and Notable Tree section of MEP ahead of April meeting	Bev
11.	Send 2023 meeting calendar invites April 28, June 9, August 4, October 13, December 8.	Bev

Building Control Group

Building Control - Building Consent Authority (BCA) & Territorial Authority (TA) Activity to 31st January 2023.

January's activities across the groups functions as a Building Consent Authority (BCA) and Territorial Authority (TA) were relatively busy considering it is traditionally a quiet month, as the industry takes a well-deserved break over the holiday period. Nevertheless, January 2023 bucked that trend as a total 79 consents were received at a value of \$21 million. In comparison in 2022 only 65 consents were received with a value of \$13 million and in 2021 62 consents were received with a value of \$8 million. The large number of consents received, and the high dollar value bodes well for the construction industry in Marlborough as nationwide there has been a drop numbers of building consents received. However, one must take into consideration that most of the new construction across the Region was consented more than a year ago. The economic slowdown that has been predicted normally has a lag period of around 12 months before its effect is felt in the building and construction industry.

The dollar value of the consents issued in January was also relatively high. The value of the consents issued in January was \$35 million dollars. Making up that total was \$20 million of industrial and commercial works.

Last year's August weather event is still influencing the team's workloads. Initially more than 120 buildings received placards. Of the placards that were initially issued 33 were red, 66 yellow and 24 were white. Currently there are 31 red placards, 57 yellow and 33 white. Building Control is working with property owners, insurance providers and geotechnical engineers as the recovery from the August 2022 Storm Event continues. The Building Control Group is actively supporting the community in providing information and availability of staff for the recovery and will continue to do this going forward in 2023.

Building Control have volunteered staff to support with the Cyclone Gabrielle emergency response. We are waiting a response from MBIE before sending staff to assist.

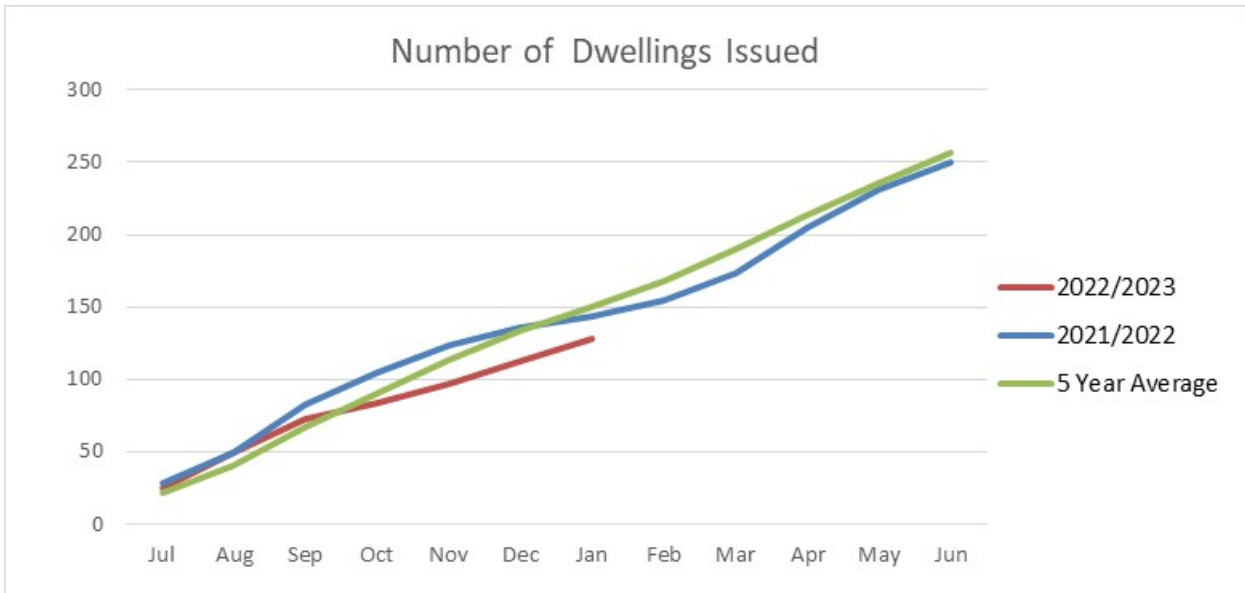
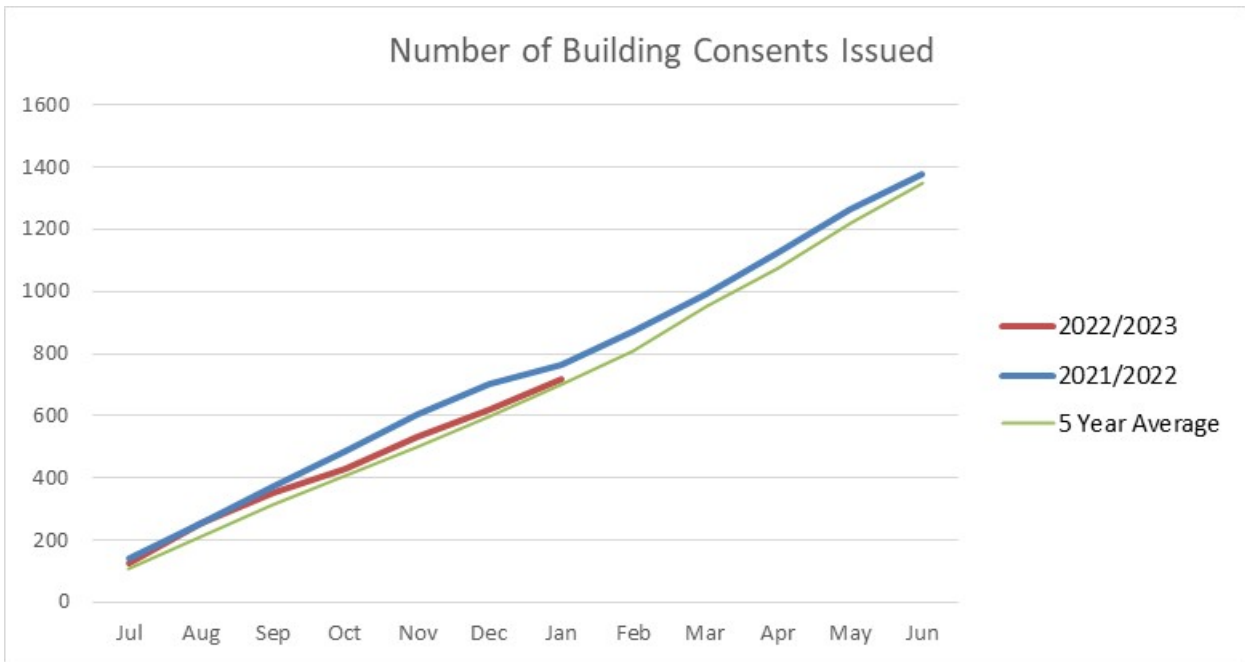
Building Consent Authority Activity for January 2023

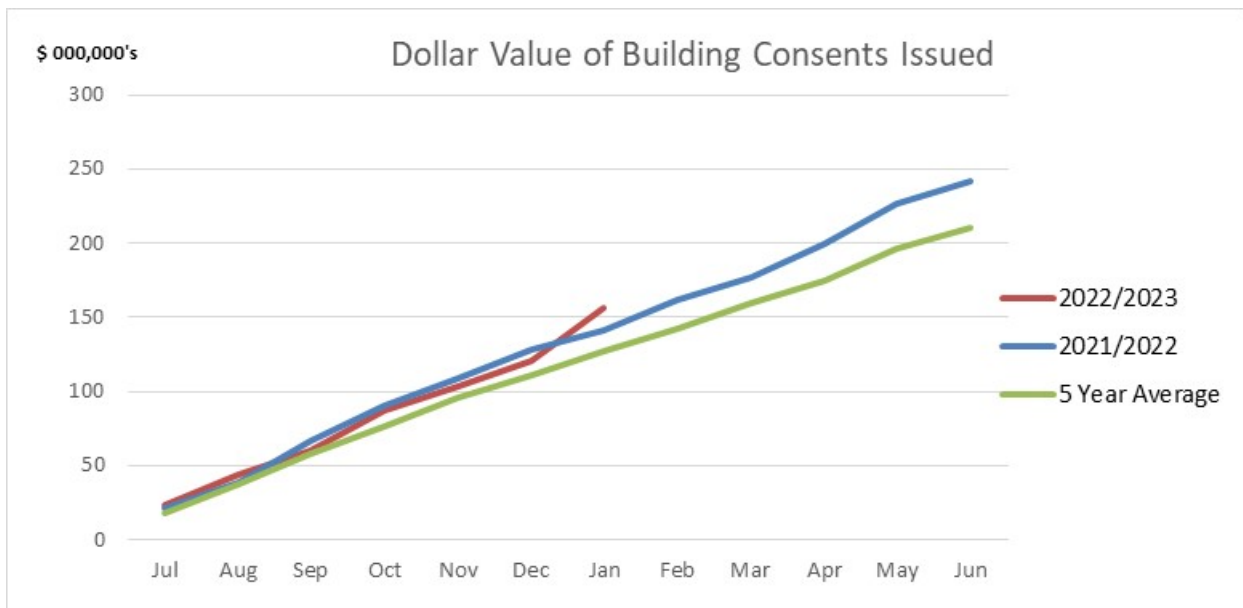
Total Consents issued

- Total of 96 consents, with a total value of \$35,708,231.01
- This total included 15 new dwellings, with a value of \$16,546,500.00

Total Consents received

- Total of 79 consents, with a total value of \$21,743,928.68
- This total included 15 new dwellings, with a value of \$10,476,548.00





Processing stats for January 2023

For the month of January, the group issued 79% of building consent applications within statutory timeframes of 20 days. This figure is an improvement from the previous month which was 59%. It is expected over the next couple of months this figure will continue to improve as staff recover from illnesses that hit the team in November and December, however the impacts of emergency recovery continue to put additional demand of work programmes.

Territorial Authority Statistics

Pool Compliance for 2023

Figures represent the 2023 calendar year (33.3% of all pools) inspection requirements.

Pool Compliance Report

**If a past pool application is modified (e.g. via a bulk update) within the date range specified, these applications will be included in the total pools count.*

Total Pools 1,432		Re-Check Inspection Results	
Pass:	4	Pass:	2
Fail:	25	Fail:	0
Removed:	4	Additional Re-Check Pass:	0
Empty:	3	Additional Re-Check Fail:	0
Total Completed to Date:	36	Re-Checks Required from this Years Inspection	
% Completed for this Year:	8	First Re-Check:	23
Remaining Audits for this Year:	441	Additional Re-Checks:	0

Building Compliance CRMs Report

CRMs Received	10
CRMs Closed	16
Notice to Fix (NtF) issued	4
Compliance Achieved via NTF	5
Prosecutions	0
Infringements	2

Earthquake Prone Buildings

There are 37 buildings in Marlborough that are listed on the Ministry of Business and Innovation (MBIE) Earthquake Prone Building register. Three of those buildings have been strengthened and will be removed from the register next month. The buildings that remain on the register have between 10-15 years to complete strengthening otherwise they face demolition.

Alcohol Licensing

A100-04

Attached is a schedule of applications for alcohol licences issued by Marlborough District Licensing Committee under delegated authority from 3 November 2022 to 17 February 2023

**Alcohol Licences issued by the Marlborough District Licensing Committee
From 3 November 2022 to 17 February 2023**

Special Licenses

Licence Number	Applicant	Location	Event	Date/s
SPC/037/2022	Rarangi Golf Club Incorporated	Rarangi Beach Road, Rarangi	private wedding function	Wednesday, 28-Dec-2022
SPC/070/2022	Lawson's Dry Hills Wines Limited	Parker Street, Blenheim	Savour in the Park	Saturday, 26-Nov-2022
SPC/074/2022	Blenheim Musical Theatre Incorporated	81 A Lakings Road, Blenheim	Cabaret Theatre	Thursday, 17-Nov, Friday 18 Nov, Saturday 19 Nov, Tuesday 22 Nov, Wednesday 23 Nov, Thursday 24 Nov, Friday 25 Nov, Saturday 26 Nov, Tuesday 29 Nov, Wednesday 30 Nov, Thursday 1 Dec, Friday 2 Dec and Saturday 3 Dec 2022.
SPC/084/2022	Kaha Basketball	6 B Lansdowne Street, Blenheim	Fundraising event for Kaha Basketball	Friday, 11-Nov-2022
SPC/085/2022	Wine Marlborough Limited	10 Uxbridge Street, Renwick	2023 W & F Festival	Saturday, 11-Feb-2023
SPC/086/2022	Marlborough Hospice Trust	107 Lower Wairau Road, Lower Wairau	Fundraiser Art Auction/fashion parade	Sunday, 04-Dec-2022
SPC/087/2022	Fairhall School	384 New Renwick Road, Fairhall	Quiz night	Friday, 18-Nov-2022
SPC/088/2022	The Marlborough Tennis Club Incorporated	Parker Street, Blenheim	events	Friday, 09-Dec-2022, 16 Dec 2022
SPC/089/2022	Boom Town Brewing Co. Limited	Parker Street, Blenheim	Savour in the park	Saturday, 26-Nov-2022
SPC/090/2022	Marlborough Repertory Society Incorporated	12 Horton Street, Blenheim	productions	Friday 18-Nov-2022, Saturday 10 Dec 2022
SPC/091/2022	Marlborough Cricket Association Incorporated	31 Redwood Street, Blenheim	Cricket events	Wednesday, 23-Nov, Thursday 24 Nov, Saturday 26 Nov, Sunday 27 Nov, Monday 29 Nov, Saturday 21 Jan 2023, Sunday 5 March 2023, Saturday 18 March 2023.
SPC/092/2022	Joval Family Wines Pty Limited	1397 Waihopai Valley Road, Waihopai	Vinyl in the vines	Saturday, 28-Jan-2023
SPC/093/2022	Blenheim Bowling Club Incorporated	65 E Weld Street, Blenheim	Private function	Friday, 09-Dec-2022

Licence Number	Applicant	Location	Event	Date/s
SPC/095/2022	Marlborough Repertory Society Incorporated	12 Horton Street, Blenheim	Stand up comedy	Tuesday, 22-Nov-2022
SPC/096/2022	Kono NZ LP	10 Uxbridge Street, Renwick	MWFF 2023	Saturday, 11-Feb-2023
SPC/097/2022	Hunter's Wines (NZ) Limited	10 Uxbridge Street, Renwick	MWFF 2023	Saturday, 11-Feb-2023
SPC/098/2022	Joval Family Wines Pty Limited	10 Uxbridge Street, Renwick	MWFF 2023	Saturday, 11-Feb-2023
SPC/099/2022	Wairau River Wines Limited	10 Uxbridge Street, Renwick	MWFF 2023	Saturday, 11-Feb-2023
SPC/100/2022	PC Adams Limited	197 Rapaura Road, Rapaura	Prizegiving	Friday, 09-Dec-2022
SPC/101/2022	Villa Maria Estate Limited	10 Uxbridge Street, Renwick	2023 MWFF	Saturday, 11-Feb-2023
SPC/102/2022	Tupari Wines Limited	10 Uxbridge Street, Renwick	MWFF 2023	Saturday, 11-Feb-2023
SPC/103/2022	Johanneshof Cellars Limited	10 Uxbridge Street, Renwick	MWFF 2023	Saturday, 11-Feb-2023
SPC/104/2022	Johnson Estate Limited	10 Uxbridge Street, Renwick	MWFF 2023	Saturday, 11-Feb-2023
SPC/105/2022	Clos Henri Limited	10 Uxbridge Street, Renwick	MWFF 2023	Saturday, 11-Feb-2023
SPC/106/2022	Marlborough Kart Club Incorporated	3 Wither Road, Blenheim	Karting 2023	Saturday, 14-Jan-2023, 18 Feb, 4 Mar, 17, 18 and 19 Mar, Sunday 2 April, 7 May, Friday 2 and Saturday 3 June, Sunday 9 July, 6 Aug, 3 Sep, 8 Oct, 5 Nov, Friday 17, Saturday 18, Sunday 19 Nov, Sunday 3 Dec 2023
SPC/107/2022	Accolade Wines New Zealand Limited	10 Uxbridge Street, Renwick	MWFF 2023	Saturday, 11-Feb-2023
SPC/108/2022	Framingham Wines Limited	19 Conders Bend Road, Conders Bend	Live music event	Friday, 02-Dec-2022
SPC/109/2022	EDR-H New Zealand Limited	10 Uxbridge Street, Renwick	MWFF 2023	Saturday, 11-Feb-2023
SPC/110/2022	Wither Hills Vineyards Marlborough Limited	10 Uxbridge Street, Renwick	MWFF 2023	Saturday, 11-Feb-2023
SPC/111/2022	Sisu Poltergeist Limited	12 London Quay, Picton	New years eve	Saturday, 31-Dec-2022
SPC/112/2022	Rock Ferry Wines Limited	10 Uxbridge Street, Renwick	MWFF 2023	Saturday, 11-Feb-2023
SPC/113/2022	Boom Town Brewing Co. Limited	14 Horton Street, Blenheim	Spearfishing Weigh in and Prize giving	Sunday, 04-Dec-2022
SPC/114/2022	The Alchemist Limited	10 Uxbridge Street, Renwick	MWFF 2023	Saturday, 11-Feb-2023
SPC/115/2022	Babich Wines Limited	10 Uxbridge Street, Renwick	MWFF 2023	Saturday, 11-Feb-2023

Licence Number	Applicant	Location	Event	Date/s
SPC/116/2022	We Are The Uncommon NZ Limited	10 Uxbridge Street, Renwick	MWFF 2023	Saturday, 11-Feb-2023
SPC/117/2022	Lawson's Dry Hills Wines Limited	10 Uxbridge Street, Renwick	MWFF 2023	Saturday, 11-Feb-2023,
SPC/118/2022	Yealands Estate Wines Limited	10 Uxbridge Street, Renwick	MWFF 2023	Saturday, 11-Feb-2023
SPC/119/2022	Blenheim Polo Club Incorporated	117 A Redwood Street, Blenheim	Polo Tournament	Saturday, 28-Jan-2023, Sunday 29 Jan 2023
SPC/120/2022	Negociants New Zealand Limited	10 Uxbridge Street, Renwick	MWFF 2023	Saturday, 11-Feb-2023
SPC/121/2022	Blenheim Bowling Club Incorporated	65 E Weld Street, Blenheim	Private event	Friday, 16-Dec-2022
SPC/122/2022	Giesen Group Limited	10 Uxbridge Street, Renwick	MWFF 2023	Saturday, 11-Feb-2023
SPC/123/2022	Marisco Vineyards Limited (REN)	10 Uxbridge Street, Renwick	MWFF 2023	Saturday, 11-Feb-2023
SPC/124/2022	Blenheim Bowling Club Incorporated	65 E Weld Street, Blenheim	Private event	Sunday, 15-Jan-2023
SPC/125/2022	Landon-Lane/Janssen Family Vineyard	10 Uxbridge Street, Renwick	MWFF 2023	Saturday, 11-Feb-2023
SPC/126/2022	Blank Canvas Wines Limited	10 Uxbridge Street, Renwick	MWFF 2023	Saturday, 11-Feb-2023
SPC/127/2022	Wairau River Wines Limited	770 Rapaura Road, Rapaura	Tennis tournament	Saturday, 31-Dec-2022, Sunday 1 Jan and Monday 2 Jan 2023
SPC/128/2022	Waikawa Boating Club Incorporated	Waikawa Marina, Waikawa Bay, Queen Charlotte Sound / Totaranui	Events	Friday, 06-Jan-2023, Saturday 7 Jan, Sunday 8 Jan, Saturday 14 Jan, Sunday 5 Feb, Saturday 11 Mar, Saturday 1 April 2023
SPC/129/2022	Esses Wine Company Limited	10 Uxbridge Street, Renwick	MWFF 2023	Saturday, 11-Feb-2023
SPC/130/2022	Pernod Ricard Winemakers New Zealand Limited (BHE)	10 Uxbridge Street, Renwick	MWFF 2023	Saturday, 11-Feb-2023
SPC/131/2022	Two Rivers Marlborough Limited	10 Uxbridge Street, Renwick	2023 MWFF	Saturday, 11-Feb-2023
SPC/132/2022	EP Wines Limited	10 Uxbridge Street, Renwick	MWFF 2023	Saturday, 11-Feb-2023
SPC/133/2022	Marlborough Harness Racing Club Inc	Old Renwick Road, Blenheim	January Race meet	Friday, 20-Jan-2023, Sunday 22 Jan 2023

Licence Number	Applicant	Location	Event	Date/s
SPC/134/2022	Marlborough Wine Limited	10 Uxbridge Street, Renwick	MWFF 2023	Saturday, 11-Feb-2023
SPC/135/2022	Framingham Wines Limited	10 Uxbridge Street, Renwick	2023 MWFF	Saturday, 11-Feb-2023
SPC/138/2022	Woodbourne 2010 Limited	76 High Street, Renwick	Wine & Food Festival After Party	Saturday, 11-Feb-2023
SPC/139/2022	Boom Town Brewing Co. Limited	1397 Waihopai Valley Road, Waihopai	Vinyl in the vines	Saturday, 28-Jan-2023
SPC/140/2022	Te Towaka Home Guard Sports	112 Te Towaka Road, Pelorus Sound / Te Hoiere	Te Towaka Sports Day	Saturday, 21-Jan-2023
SPC/141/2022	Wairau River Wines Limited	Havelock Quay, Havelock	2023 Mussel Fest	Saturday, 11-Mar-2023
SPC/142/2022	Elemental Distillers Limited	1397 Waihopai Valley Road, Waihopai	Vinyl in the vines	Saturday, 28-Jan-2023
SPC/143/2022	Forrest Wines Limited	10 Uxbridge Street, Renwick	2023 MWFF	Saturday, 11-Feb-2023
SPC/144/2022	Cloudy Bay Vineyards Limited	10 Uxbridge Street, Renwick	2023 MWFF	Saturday, 11-Feb-2023
SPC/145/2022	The South Sea Catering Company	10 Uxbridge Street, Renwick	2023 MWFF	Saturday, 11-Feb-2023
SPC/003/2023	Lions Club Of Seddon Inc	SH 1, Ward	2023 Flaxbourne show	Sunday, 26-Mar-2023
SPC/004/2023	Flaxbourne Collie Dog Trial Club	241 Ward Beach Road, Flaxbourne	2023 Collie dog trials	Friday, 10-Feb-2023, Saturday 11 Feb-2023
SPC/006/2023	Marlborough Heritage Trust	London Quay, Picton	fundraising events	Saturday, 11-Feb-2023, 12:00:00 AM
SPC/082/2022	Mary Ann Surrige	1113 Queen Charlotte Drive, Linkwater	Fundraising community sporting event	Saturday 18 Feb- 2023
SPC/136/2022	Classic Fighters Airshow Charitable Trust	121 Aerodrome Road, Omaka	2023 Yealands Classic Fighters Airshow	Friday 07-Apr-2022, Saturday 8 Apr- 2023, Sunday 9 Apr- 2023
SPC/137/2022	Gisele Aynsley	121 Aerodrome Road, Omaka	2023 Yealands Classic Fighters Air show	Friday 07-Apr-2022, Saturday 8 Apr- 2023, Sunday 9 Apr- 2023
SPC/146/2022	Renwick Arms Country Club Incorporated	92 High Street, Renwick	Annual fishing comp	Sunday, 26-Feb-2023
SPC/147/2022	Riverby Estate Limited	10 Uxbridge Street, Renwick	2023 MWFF	Saturday, 11-Feb-2023

New Premises Licences

Licence Number	Applicant	Licence Type	Premises	Expiry Date
ON/028/2022	Keir Hospitality Ltd	On Licence	Franks Oyster Bar	13/12/2023
ON/043/2022	Cralex Enterprises Ltd	On Licence	Wairau Valley Tavern	22/11/2023
OFF/046/2022	Cralex Enterprises Ltd	Off Licence	Wairau Valley Tavern	22/12/2023
ON/046/2022	Marlborough Vintners Collective Ltd	On Licence	The Fancy Cow	13/12/2023
ON/048/2022	Chateau Marlborough Ltd	On Licence	Chateau Marlborough Hotel	9/12/2023
OFF/054/2022	Bradbury Trading Ltd	Off Licence	Picton Four Square	9/12/2023
OFF/058/2022	Ataru Portfolios Ltd	Off Licence	Alcove Wines	13/12/2023
ON/052/2022	SISU Poltergeist Ltd	On Licence	SISU	19/01/2024
ON/049/2022	Vines Village On Licence Ltd	On Licence	Vines Village	8/02/2024
OFF/061/2022	Savvy Wines Ltd	Off Licence	Savvy Wines	15/12/2023
OFF/063/2022	Bradley Daniel Frederickson	Off Licence	Outside the Box Wines	2/02/2024
OFF/064/2022	Wineway Solutions Ltd	Off Licence	Wineway Solutions	1/02/2024

Variation to Licensed Premise

Licence Number	Applicant	Licence Type	Premises	Expiry Date
ON/047/2022	Matthew John Hewitt	On Licence	Little Amigos	2/05/2023
ON/050/2022	Vangalas Ltd	On Licence	The Tamarind	11/08/2025

Renewed Premises Licenses

Licence Number	Applicant	Licence Type	Premises	Expiry Date
ON/039/2022	Marlborough Civic Theatre Trust	On Licence	Marlborough Events Centre	27/07/2025
ON/040/2022	PC Adams Ltd	On Licence	Vines Cafe	2/02/2025
ON/038/2022	GAGP Enterprises Ltd	On Licence	Le Café Picton	30/09/2025
OFF/044/2022	Dodson Street Liquor Takeaway Ltd	Off Licence	Dodson Street Liquor Takeaway	18/10/2025
OFF/045/2022	Makers and Providers Ltd	Off Licence	Makers and Providers	12/10/2025
CLUB/008/2022	Renwick Arms Country Club Inc	Club Licence	Renwick Arms Country Club	24/09/2025
ON/044/2022	Johnson Estate Ltd	On Licence	Spy Valley Wines	25/10/2025
OFF/047/2022	Maurice John McQuillan	Off Licence	Superliquor Springlands	19/10/2025
OFF/049/2022	Marisco Vineyards Ltd	Off Licence	Marisco Vineyards	27/09/2025
OFF/050/2022	Windrush Vineyards Ltd	Off Licence	Windrush	16/10/2025
ON/045/2022	Saint Clair Cellar Door & Café Ltd	On Licence	Saint Clair Vineyard Kitchen	31/10/2025
OFF/051/2022	Saint Clair Cellar Door & Café Ltd	Off Licence	Saint Clair Vineyard Kitchen	31/10/2025
OFF/053/2022	Two Rivers Marlborough Ltd	Off Licence	Two Rivers	8/10/2025

Licence Number	Applicant	Licence Type	Premises	Expiry Date
OFF/052/2022	EDR-H New Zealand Ltd	Off Licence	Rimapere	17/11/2025
OFF/055/2022	Alfa Lea Horticulture Ltd	Off Licence	Lowlands Wines	15/11/2025
ON/051/2022	Framingham Wine Ltd	On Licence	Framingham Wines	9/10/2025
OFF/057/2022	Sugar Loaf Wines Ltd	Off Licence	Sugar Loaf Wines	24/11/2025
OFF/059/2022	Johnson Estate Ltd	Off Licence	Spy Valley Wines	3/12/2025
OFF/060/2022	Clos Henri Ltd	Off Licence	Clos Henri Vineyard	29/11/2025
ON/053/2022	Captains Daughter Ltd	On Licence	Captains Daughter	1/12/2025
ON/055/2022	Marlborough Tour Company Ltd	ON Licence	MV Spirit	9/12/2025
ON/056/2022	Hunters Wines (NZ) Ltd	On Licence	Hunters Cellar Door Restaurant	18/12/2025
ON/057/2022	Sai Danish Trading Ltd	On Licence	Charcoal Indian Restaurant	25/11/2025
ON/059/2022	Scoozi Pizza Ltd	On Licence	Scoozi Pizza & Pasta	4/12/2025
ON/060/2022	Bladen Wines Ltd	On Licence	Bladen Wines	20/12/2025
ON/062/2022	Benpen Ltd	On Licence	Lochmara Lodge	25/11/2025

Temporary Authority Premises Licenses

Licence Number	Applicant	Licence Type	Premises	Expiry Date
OFF/038/2020	Huia Estate Vineyards Ltd	Off Licence	Huia Estate Vineyards	24/01/2023
ON/021/2020	Huia Estate Vineyards Ltd	On Licence	Huia Estate Vineyards	24/01/2023

New Manager Certificates

Certificate Number	Applicant	Premises	Expiry Date
CERT/129/2021	Bradley Daniel Frederickson	Outside the Box Wines	02-02-2024
CERT/080/2022	Bridget Louise Byrne	Framingham Wines	15-11-2023
CERT/104/2022	Beverley Gaye Smith	Blenheim New World Supermarket	04-11-2023
CERT/109/2022	Stuart John Marfell	Grove Mill Winery	14-12-2023
CERT/111/2022	Diana Kovacs	Saint Clair Vineyard Kitchen	24-11-2023
CERT/119/2022	Natasha Christine McQuillan	Grove Road Superliquor	04-11-2023
CERT/120/2022	Ryan Blayne McQuillan	Grove Road Superliquor	04-11-2023
CERT/121/2022	Anna Michelle Paterson	Makers And Providers Limited	04-11-2023
CERT/125/2022	Pichayanin Hanpanich	Norimaki	08-11-2023
CERT/126/2022	Sutiporn Koowattanasuchat	Norimaki	08-11-2023
CERT/127/2022	Jennifer Louise Yarrow	O: Tu & Co	15-11-2023
CERT/128/2022	Manish Sethi	Marlborough Public House	15-11-2023
CERT/129/2022	Jordyn Lorraine Bayly	Marlborough Tour Company	04-11-2023
CERT/130/2022	Robin Charles Savage	Marlborough Tour Company	09-12-2023

Certificate Number	Applicant	Premises	Expiry Date
CERT/131/2022	Kashish Verma	Fairweathers Bar & Restaurant	04-11-2023
CERT/132/2022	Kristen Kate Ward	Boom Town Beer Garden Limited	04-11-2023
CERT/133/2022	Yueming Ouyang	The Marlborough Lodge Limited	24-11-2023
CERT/134/2022	Paul Martin Ashdown	Redwood Tavern	18-11-2023
CERT/135/2022	Leeann Kathryn O'Donnell	Redwood Tavern	09-12-2023
CERT/136/2022	Susan Brenda Johnston	Speights Ale House Blenheim	18-11-2023
CERT/137/2022	Laure Muriel Victoire Just	The Fancy Cow	15-11-2023
CERT/138/2022	Claire Anabel Rose Allan	Huia Vineyards Limited	15-11-2023
CERT/140/2022	Allison Magenta Mason	Countdown Springlands	18-11-2023
CERT/141/2022	Michael John Ganzevles	Jolly Roger Bar & Cafe	18-11-2023
CERT/142/2022	Sarah Elizabeth Clark	Clark Estate Cellar Door	24-11-2023
CERT/143/2022	Zana Louise Whittaker-Scott	Alcove Wines	13-12-2023
CERT/144/2022	Tegen Jamie Benseman	Renwick Sports Centre	24-11-2023
CERT/145/2022	Barbara Anne Louise Burkhart	Marlborough Tour Company	09-12-2023
CERT/146/2022	Justin Brook Gibbs	Marlborough Public House	09-12-2023
CERT/147/2022	Sharee Zoe Heberd	Marlborough Public House	20-01-2024
CERT/149/2022	Monique Kathleen Mary Webster	Rimapere	16-12-2023
CERT/150/2022	Benjamin David Godsiff	Wither Hills Vineyards Marlborough Limited	01-02-2024
CERT/151/2022	Vivek Thekkappurath Vijayan	The Tamarind Indian Restaurant	09-12-2023
CERT/152/2022	Utishna Anju Mala Singh	Furneaux Lodge	09-12-2023
CERT/154/2022	Roberta Di Marco	Auntsfield Estate Limited	20-01-2024
CERT/155/2022	Henry James Thompson	Grove Road Superliquor	20-01-2024
CERT/156/2022	Rhiannon Bryony Lydia Hall	Marlborough Tour Company	01-02-2024
CERT/160/2022	Fillippa Mary Haigh	Marlborough Aero Club	01-02-2024
CERT/163/2022	Robert John Clark	The Marlborough	01-02-2024
CERT/156/2022	Rhiannon Bryony Lydia Hall	Marlborough Tour Company	01-02-2024
CERT/157/2022	Rose June Adams	Captains Daughter Limited	10-02-2024
CERT/158/2022	Niki Anne Penberthy	Lochmara Lodge	10-02-2024
CERT/159/2022	Thomas Alan Pegler	Huia Estate Vineyards Limited	10-02-2024

Renewed Manager Certificates

Certificate Number	Applicant	Premises	Expiry Date
CERT/012/2014	Josephine Mary Elizabeth Janssen	Landon-Lane/Janssen Family Vineyard	01-02-2026
CERT/191/2015	Karen Helen Harris	Crow Tavern	07-10-2025
CERT/218/2015	Abigail Cushla Maxwell	Babich Wines	10-11-2025
CERT/241/2015	Brian James Aldridge	Mikey's Bar & Restaurant	25-11-2025
CERT/247/2015	Adrianna Louise Ingpen	Woodbourne Tavern	20-11-2025
CERT/257/2015	Stacey Ruth Dight	CPR Airshop	20-11-2025
CERT/272/2015	Cullen Stuart Ian Neal	Sugar Loaf Winery	25-11-2025
CERT/297/2015	Clive Charles Macfarlane	Wino's Liquor	21-12-2025
CERT/264/2016	Wendy Alison Stocker	Hotel D'urville	29-10-2025
CERT/265/2016	Kim Tracy Brown	Fairweathers On Scott	27-11-2025
CERT/280/2016	Peter Schoni	Le Cafe Picton	14-11-2025
CERT/281/2016	Peter John MacDonald	Hunter's Wines (NZ) Limited	07-12-2025
CERT/292/2016	Janette Helen Holdaway	Lowlands Wines	15-11-2025
CERT/297/2016	Gareth William McGlynn	Gusto	14-11-2025
CERT/299/2016	Kerri Anne Brinsdon	Woodbourne Tavern	15-12-2025
CERT/305/2016	Joanne Mary Gibbons	No 1 Family Estate Limited	02-12-2025
CERT/312/2016	Victoria Claire Lewis	Giesen Wines Cellar Door	24-11-2025
CERT/316/2016	Christine Maureen Fisk	Havelock Four Square	14-12-2025
CERT/317/2016	Grant Wayne Fisk	Havelock Four Square	14-12-2025
CERT/335/2016	Julian Eryl Terry	Seabreeze Cafe	09-12-2025
CERT/341/2016	Max Lester Barratt	Blenheim Liquorland	17-12-2025
CERT/009/2017	Lynley Anne McKinnon	Chateau Marlborough	02-12-2025
CERT/031/2018	Philip Warren McKinnon	Event Cinemas Blenheim	26-09-2025
CERT/032/2018	Merran Margaret June Thomas	Event Cinemas Blenheim	20-11-2025
CERT/033/2018	Kylie Elizabeth Campbell-Wilson	Event Cinemas Blenheim	26-09-2025
CERT/118/2018	Mary Ann Surridge	The Queen Charlotte	12-11-2025
CERT/146/2018	Stephan Edward Walliser	Fromm Winery	20-11-2025
CERT/149/2018	Slawomira Malgorzata Podgorska-Ryan	Cloudy Bay Vineyards Limited	20-11-2025
CERT/151/2018	Anna Louise Drummond	Countdown Redwoodtown	14-11-2025
CERT/152/2018	Kerry Margaret Ellis	Captains Daughter Limited	20-11-2025
CERT/162/2018	Donna Gladys Kerr	Benton Wine Group Limited	19-11-2025
CERT/164/2018	Nevena Patricija Glucina	Marlborough Public House	20-11-2025
CERT/166/2018	Vishhalbhai Rameshbhai Patel	Countdown Redwoodtown	30-11-2025
CERT/170/2018	Sasithon Boonterm	Bamboo Garden Restaurant	30-11-2025
CERT/096/2021	Anne Veronique Marie Belmas-Escalle	Rimapere	17-11-2025
CERT/107/2021	Michael Kenneth McGuire	Jolly Roger Bar & Restaurant	28-10-2025
CERT/114/2021	Vanessa Renee Evans	Seumus Irish Bar	23-09-2025

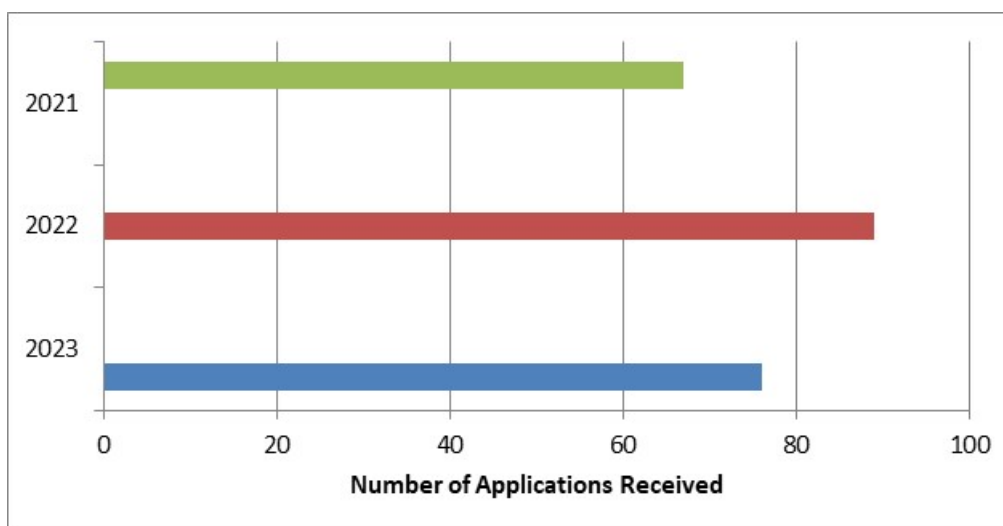
Certificate Number	Applicant	Premises	Expiry Date
CERT/116/2021	Madhukar Reddy Shampooor	Charcoal Indian Restaurant	23-09-2025
CERT/132/2021	Hayley McCairns	Eradus Wines Limited	29-10-2025
CERT/136/2021	Kirsty Maree Heberd	Waitohi Sports Bar And Grill	17-11-2025
CERT/139/2021	Graham Murray Evans	Springlands Tavern	17-11-2025
CERT/142/2021	Karen Jane Sydne	Whitehaven Wines Cellar Door	25-11-2025
CERT/144/2021	Gwendoline Nicole Rachel Girard	The Good Home	09-12-2025
CERT/146/2021	Rachel Alice Tully	Forrest Wines Limited	25-11-2025
CERT/147/2021	Marie Baptistine Guet	ASB Theatre	10-12-2025
CERT/148/2021	Juanita Mary Smart	ASB Theatre	10-12-2025
CERT/149/2021	Christine Ann Foley	Cork & Keg	15-12-2025
CERT/153/2021	Samuel Tane Richmond	Four Square Spring Creek	25-11-2025
CERT/154/2021	Jeness Jean Rouche	The Millers Rest	25-11-2025
CERT/156/2021	Ma Eufemia Teresa Clemente	Picton Four Square	16-12-2025
CERT/158/2021	Katie Amanda Pullan	Picton Fresh Choice	09-12-2025
CERT/168/2021	Joseph William Trappitt	Sugar Loaf Winery	09-12-2025
CERT/170/2021	Atish Kumar	The Tamarind Indian Restaurant	12-01-2026
CERT/139/2022	Clio Annie Josette Lestable	Scotch Wine Bar	23-12-2025
CERT/148/2022	Benjamin William Walsh	Marlborough Public House	18-12-2025
CERT/153/2022	Sarah Catherine Jane Fisk	Havelock Four Square	01-12-2025
CERT/179/2021	Kate Marie Benseman	Renwick Sport Centre	16-02-2026

Resource Consents Section

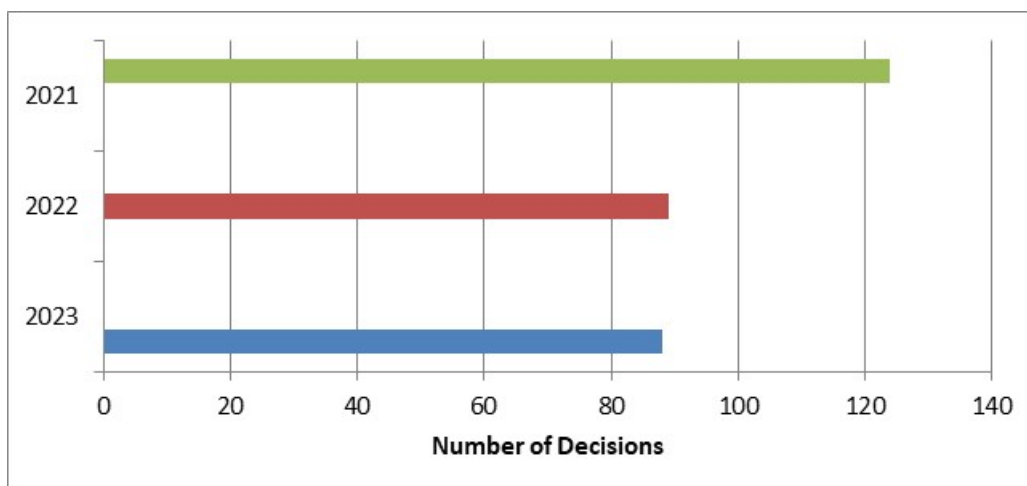
(Report prepared by Anna Davidson)

R450-004-12

In keeping with previous years the Resource Consent Team has experienced a relatively slow start to the 2023 year with the number of applications received. To date in 2023 Council has received **76** applications which is less than in 2022 and more than in 2021. Of that total, **67** were new applications for resource consent. Council has also received **8** applications for variations to resource consent conditions under section 127 and **1** extension to lapse date under section 125. In the same period in 2022 Council received **89** applications and in 2021 Council received **67** applications.



To date in 2023 Council has issued **88** decisions which is less than the previous two years. Of the total issued, **76** were for new applications for resource consent. Council has also issued **11** section 127 decisions (variations to resource consent conditions) and **1** section 125 decision (extension to lapse date). In the same period in 2022 Council issued **89** decisions and in 2021 Council issued **124** decisions.



There are currently **573** applications in processing. This is less than the numbers in processing in 2022 (**583**) and the same as in 2021 (**573**).

The RC Team sent out the summer RCT newsletter on 1 December 2022. The newsletter included an article on the planning ahead for the Christmas/New Year break; tips for agents preparing water permit applications; what constitutes a kitchen; the deemed permitted boundary activity process and an update on which applications the discount regulations apply to. The RC Team has drafted and number of interesting and relevant articles for its next newsletter which is due out on 1 March 2023. The RCT newsletter has been very well received to date is widely distributed via email and is also available on the Council website. Previous issues can also be found on the Council website.

The RC Team attaches a customer survey to every decision that is issued. To date in the 2022/23 year only 17 customers have responded to the RC processing survey. 59% of the respondents were agents and 41% were applicants.

The types of consents were – 12% Land Use; 6% Land Disturbance, 6% River - surface or bed activity, 47% Coastal Permits - moorings, 12% Coastal Permits - other coastal permit, 6% Water Permits and 6% Discharge Permits – domestic wastewater and 5% Discharge Permits – other.

All our customers who used the online application system were satisfied or very satisfied with using the system.

The respondents who did not use the online application system gave the following reasons for not using the online system:

- 14.3% didn't know about the online system.
- 42.9% found the online system too complicated to use.
- 42.9% find that the online system takes more time than other methods.
- 42.9% were unsure how to use the Council online system.
- 29% had other reasons for not using the online system.

All the respondents were satisfied or very satisfied with the amount of communication received from planning officers. The satisfied customers commented that planning officers were responsive, helpful, gave good advice and direction and that they appreciated being able to review draft conditions. Respondents also provided constructive feedback on their preference for receiving one request for all additional information required rather than receiving multiple requests.

All the respondents found the response to any communication regarding the processing of their consent to be acceptable or above their expectations.

All the respondents found their decision document and all correspondence from the planning officer to be understandable with many of them finding it clearly understood.

All the respondents found the resource consent conditions and what is required to achieve compliance to be understood or clearly understood.

88% of the respondents' applications were not notified; 12% were limited notified and none were publicly notified. All the respondents found the notification decision fully understandable.

None of the respondents attended a pre-hearing meeting or a hearing with a Councillor hearing panel or an independent commissioner. Consequently, there were no responses to the questions about the hearing experience.

All the respondents rated the helpfulness and professionalism of planning officers highly with 62.5% rating them as excellent. The respondents commented that they found the planning team easy to deal with, polite, professional, and pragmatic.

All the respondents were satisfied or very satisfied with the RC Team processing of their application. Respondents commented that they found the process quicker and smoother than expected. Respondents also provided constructive feedback on the difficulty of using the online process for the first time and were unsure if they needed to do anything when they received the section 88 check decision. Issues with using the online system and understanding the automated responses are diminishing as customers become more familiar with it.

None of the respondents asked to be contacted to discuss their consent but all comments and feedback have been taken on board, addressed, and relayed to the relevant staff.

Resource Consent Approvals Under Delegated Authority

The following applications have been approved under delegated authority pursuant to Council's Instrument of Delegation pursuant to the Resource Management Act 1991, and the relevant clause thereof as identified below.

	Delegation	Consent Holder	Consent No.	Consent(s) Issued	Proposal	Site Location	Date Issued
1.	104B	CDS West Coast Limited	U220931	Water Permit (Take Water); Water Permit (Use Water) (x2)	Take Wairau Aquifer FMU water from wells P28w/3352 & P28w/3004 up to a maximum rate of 35,062 cubic metres per year. Use water for the irrigation of up to 16.8 hectares of vineyard on Lot 1 DP 10272 and Lot 3 DP 10272, and within 100 metres of Significant Wetland W158. Use water for ancillary uses outside of the irrigation season.	34B Ferry Road, Spring Creek	16/01/2023
2.	104B	P H Van Nieuwkoop	U220989	Discharge Permit (to Land)	Discharge primary treated domestic wastewater to land.	Nydia Bay, Pelorus Sound/Te Hoiere	17/01/2023
3.	104B	G H and R McAlpine	U220985	Discharge Permit (to Land)	Discharge primary treated domestic wastewater to land.	252 Wakamarina Road, Canvastown	17/01/2023
4.	104B	M J and P R Stringer	U220984	Discharge Permit (to Land)	Discharge primary treated domestic wastewater to land.	732 Kenepuru Road, Ohingaroa Bay, Mahau Sound	17/01/2023
5.	104B	D Urquhart and S A Pedersen as trustees of D U and S A Pedersen Family Trust	U220980	Water Permit (Take Water); Water Permit (Use Water)	Abstract Wairau Aquifer FMU water up to a maximum of 4015 cubic metres per year from well W20180. Use water for commercial use for domestic needs for a 12-unit motel, staff residence and irrigation of amenity landscape.	1268 Rapaura Road, Spring Creek	17/01/2023
6.	104B	P Scott and C A M Alloway	U220975	Discharge (to Land)	Discharge treated domestic greywater to land.	1114 Queen Charlotte Drive, Linkwater	17/01/2023

	Delegation	Consent Holder	Consent No.	Consent(s) Issued	Proposal	Site Location	Date Issued
7.	104B	P A Rattray	U220971	Discharge Permit (to Land)	Discharge secondary treated domestic wastewater to land within a soil sensitive area via a new wastewater management system.	450 Waihopai Valley Road, Waihopai Valley	17/01/2023
8.	104B	Marlborough District Council	U220943	Land Use (River Surface or Bed Activity)	Construct a wetland utility structure in Para Swamp.	Para Swamp, State Highway 1, Tuamarina	17/01/2023
9.	104B	Cloudy Bay Vineyards Limited	U220892	Land Use (Activity) (x2); Land Use (Land Disturbance)	Expand the building footprint of the existing winery (construct Cellar 5). Exceed the maximum permitted building height. Undertake soil disturbance on a potential HAIL site that does not comply with the permitted activity requirements of the National Environmental Standards for Assessing and Managing Contaminants in Soil to Protect Human Health.	230 Jacksons Road, Rapaura	17/01/2023
10.	104B	J V Thornhill and M S J Treadwell	U220828	Discharge Permit (to Land)	Discharge treated domestic wastewater to land via an existing onsite wastewater management system.	Mahau Road, Mahau Sound	17/01/2023
11.	104B	A J and R S Materoa	U230015	Land Use Activity	Construct a new sleepout within the southern and eastern boundary setbacks. Authorise the construction of a pole shed within the southern boundary setback.	56 Hardings Road, Riverlands	18/01/2023
12.	104B	Overton Family Trust; A W, L and J M McFarlane and R N Lindsay	U230014	Land Use Activity	Construct a new two bay shed which will encroach the western boundary set back.	42 Bells Road, Springlands	18/01/2023

	Delegation	Consent Holder	Consent No.	Consent(s) Issued	Proposal	Site Location	Date Issued
13.	104B	A R Black	U220992	Land Use Activity	Construct a dwelling which will breach the southern boundary setback.	55A Old Mill Road, Okiwi Bay	18/01/2023
14.	104B	Vinlink Marlborough Limited	U220952	Land Use (Activity)	Construct a new building within 8 metres of a drain and 3 metres of a boundary of another zone.	33 Liverpool Street, Riverlands, Blenheim	18/01/2023
15.	104B	Manuka Drive Water Supply Incorporated	U220841	Water Permit (Take Water); Water Permit (Use Water); Land Use (River Surface or Bed Activity)	Continue to abstract water from Ngakuta Bay Creek located on Lot 4 DP 511297 to up to a maximum rate of 86 cubic metres per day. Use water for a community domestic water supply to 26 properties in Ngakuta Bay. Continue to occupy the bed of Ngakuta Bay Creek with an intake structure.	Manuka Drive, Ngakuta Bay	18/01/2023
16.	104B	M L Waghorn	U220856	Coastal Permit	New coastal permit (replacing MFL400 and U090263) to realign and operate, using conventional longline methods, an existing 6.09 hectare marine farm (site 8182) located in Picnic Bay, Pelorus Sound/Te Hoiere.	Picnic Bay, Pelorus Sound/Te Hoiere	19/01/2023

	Delegation	Consent Holder	Consent No.	Consent(s) Issued	Proposal	Site Location	Date Issued
17.	104B	Parsons Road Vineyard Limited	U220738	Water Permit (Take Water) (x2); Water Permit (Use Water)	Abstract up to 207 cubic metres of B Class Wairau River water per day from well 10848 (Grid Ref 1641454E 5398214N). Use water for the irrigation of up to 9 hectares of vineyard. Abstract up to 207 cubic metres per day, up to a maximum of 900 cubic metres per year of B Class Wairau River water outside of the irrigation season from well 10848 (Grid Ref 1641454E 5398214N). Use water for ancillary purposes.	48 Parsons Road, Wairau Valley	19/01/2023
18.	104B	Ormond Nurseries Limited	U220727	Land Use (Activity); Discharge Permit (to Land)	Establish, operate and relocate the headquarters and hub (including professional offices) of an existing nursery operation. Discharge up to 4,500 litres per day of treated domestic wastewater to land within a soil sensitive area.	13 Rowley Crescent, Grovetown, Blenheim	19/01/2023
19.	104B	Spring Creek Vines Limited	U211008	Land Use (Activity)	Validate an existing timber landing and associated steps and rockwork located on the bank of Awarua/Spring Creek.	2112 State Highway 1, Spring Creek	19/01/2023

	Delegation	Consent Holder	Consent No.	Consent(s) Issued	Proposal	Site Location	Date Issued
20.	104B	HGLD Vineyard Limited	U230020	Land Use (Activity) (x13);	<p>Install and operate a FrostBoss C49 frost fan with a John Deere engine (Fan 1).</p> <p>Install and operate a FrostBoss C49 frost fan with a John Deere engine (Fan 2).</p> <p>Install and operate a FrostBoss C49 frost fan with a John Deere engine (Fan 3).</p> <p>Install and operate a FrostBoss C49 frost fan with a John Deere engine (Fan 4).</p> <p>Install and operate a FrostBoss C49 frost fan with a John Deere engine (Fan 5).</p> <p>Install and operate a FrostBoss C49 frost fan with a John Deere engine (Fan 6).</p> <p>Install and operate a FrostBoss C49 frost fan with a John Deere engine (Fan 7).</p> <p>Install and operate a FrostBoss C49 frost fan with a John Deere engine (Fan 8).</p> <p>Install and operate a FrostBoss C49 frost fan with a John Deere engine (Fan 9).</p>	37 Avondale Road, Waihopai Valley	23/01/2023

	Delegation	Consent Holder	Consent No.	Consent(s) Issued	Proposal	Site Location	Date Issued
21.	104B		U230020 Continued		Install and operate a FrostBoss C49 frost fan with a John Deere engine (Fan 10). Install and operate a FrostBoss C49 frost fan with a John Deere engine (Fan 11). Install and operate a FrostBoss C49 frost fan with a John Deere engine (Fan 12). Install and operate a FrostBoss C49 frost fan with a John Deere engine (Fan 13).		23/01/2023
22.	104B	S L Bryant and N L Thompson	U220960	Land Use (Activity)	Construct a new pole shed on Lot 11 DP 2521 which will exceed the site coverage standard.	220 Rarangi Beach Road, Rarangi	23/01/2023
23.	104B	G H Devlin and J I Fox	U220807	Land Use (Activity); Discharge Permit (to Land)	Authorise an existing second dwelling house. Discharge treated domestic wastewater to land.	2E Ferry Road, Spring Creek	23/01/2023
24.	104B	Allied Concrete	U220406	Discharge Permit (to Land); Land Use (Activity)	Discharge potentially contaminated stormwater to land. Operate a concrete making facility.	62 Pak Lims Road, Renwick	23/01/2023
25.	104B	Teawest Investment Limited	U220953	Land Use (Land Disturbance); Land Use (River Surface or Bed Activity)	Undertake earthworks to construct new forestry roads, tracks, pads and landings; and to install two new culvert crossings. Install two new culvert crossings.	Leslies Road, Okaramio	23/01/2023
26.	104B	Wainui Green 2015 Limited & Two MF Limited (Pig Bay Partnership)	U180586	Coastal Permit - Marine	New coastal permit (replacing U941457 and MPE122) for the continuation of an existing 6.0 hectare marine farm (site 8167) located at Papatua South, using conventional longline methods.	Papatua South, Pig Bay, Te Anamāhanga/Port Gore	23/01/2023

	Delegation	Consent Holder	Consent No.	Consent(s) Issued	Proposal	Site Location	Date Issued
27.	104B	R F and B I Macalister on behalf of the R F and B I Macalister Family Trust and Robert Thomas Macalister	U220963	Land Use (Activity); Discharge (to Land); Land Use (River Surface or Bed Activity)	Construct a new dwelling within 8 metres of an unnamed waterway, within 8 metres of the of the front boundary, and within 28 metres of the Coastal Marine Zone, and to place wastewater treatment tanks within 8 metres of an unnamed waterway. Discharge secondary treated domestic wastewater to land via a new wastewater management system. Erect a wastewater pipeline over an unnamed waterway.	Macalister Cove, Blackwood Bay, Queen Charlotte Sound/Tōtaranui	25/01/2023
28.	104B	D J and S J M Hartshorn and R J Hadwin	U230021	Discharge Permit (to Land)	Discharge secondary treated domestic wastewater to land.	Ahitarakihi Bay, Queen Charlotte Sound/Tōtaranui	26/01/2023
29.	104B	M W Perkins	U220958	Discharge Permit (to Land)	Discharge treated domestic wastewater to land within a soil sensitive area from a new wastewater system.	330 Redwood Pass Road, Redwood Pass	26/01/2023
30.	104B	M D and N C Elwood and Nelson Trustees No. 7 Limited	U220978	Subdivision	Cancel bullet points 1 and 2 of consent notice 402739.7, as it applies to Lot 4 DP 19539, relating to the location of building site and wastewater design.	Te Towaka-Port Ligar Road, Bulwer, Marlborough Sounds	31/01/2023

	Delegation	Consent Holder	Consent No.	Consent(s) Issued	Proposal	Site Location	Date Issued
31.	104B	L T Smith as trustees of the Te Rūnanga o Ngāti Kuia Trust	U220954	Land Use (Activity) (x2); Land Use (Land Disturbance)	Undertake indigenous vegetation planting within Significant Wetland W147 which may mature to a height greater than 6 metres within 30 metres of State Highway 6. Place a mulch head within the State Highway 6 road reserve, adjacent to Significant Wetland W147. Operate wheeled or tracked machinery and undertake land disturbance within 10 metres of Significant Wetland W147 and within 8 metres of Ruapake Stream to remove exotic vegetation.	Ruapaka Wetland, Canvastown	31/01/2023
32.	104B	R O and A J Jones and J R McGashan as trustees of R O and A J Jones Family Trust	U230042	Land Use (Activity)	Construct a garage on Lot 1 DP 3119 within the 10-metre setback from the base of notable trees.	1 Russell Street, Picton	01/02/2023
33.	104B	S A Heywood, M A Brown and L K Heywood	U220347	Coastal Permit	Coastal permit to construct a new boatshed and associated decking and access steps.	Patten Passage, Queen Charlotte Sound/Tōtaranui	01/02/2023
34.	104B	C Rattray	U040008	Coastal Permit	Change condition 12 of resource consent U040008 to enable existing swing mooring m1983 to be transferred to new owner.	Momorangi Bay, Grove Arm	01/02/2023
35.	104B	A J G Ryan	U220990	Discharge Permit (to Land)	Discharge treated domestic wastewater to land from a new onsite wastewater system.	46 Tetley Brook Road, Seddon	01/02/2023

	Delegation	Consent Holder	Consent No.	Consent(s) Issued	Proposal	Site Location	Date Issued
36.	104B	Marlborough Lines Limited	U220863	Land Use (Land Disturbance); Land Use (River Surface or Bed Activity); Discharge Permit (To Water)	Undertake clearance of indigenous and non-indigenous vegetation by aerial spraying and / or hand swabbing of herbicide and non-mechanical methods within a significant natural wetland greater than 200 m ² within an existing electrical lines corridor on Lot 1 DP 10716 and to maintain that corridor on an ongoing basis as required. Undertake clearance of indigenous and non-indigenous vegetation by aerial spraying and / or hand swabbing of herbicide and non-mechanical methods within an existing electrical lines corridor crossing Significant Wetland 108 on Lot 1 DP 10716, and to maintain that corridor on an ongoing basis as required. Discharge herbicide to water during the clearance of indigenous and non-indigenous vegetation by targeted aerial spraying and / or hand swabbing of herbicide within Significant Wetland 108 for the purpose of maintaining an existing electrical lines corridor on Lot 1 DP 10716, and to maintain that corridor on an ongoing basis as required.	Para Road Koromiko, Para Wetland	01/02/2023
37.	104B	Whitehaven Wine Company Limited	U220824	Subdivision (Boundary Adjustment)	Subdivide Lot 1 and Lot 2 DP 314066 as a boundary adjustment.	3205 State Highway 63, Wairau Valley	01/02/2023
38.	104B	Marlborough Lines Limited	U230038	Discharge Permit (to Land)	Discharge treated domestic wastewater to land.	Kapowai Bay, D'Urville Island	02/02/2023

	Delegation	Consent Holder	Consent No.	Consent(s) Issued	Proposal	Site Location	Date Issued
39.	104B	F E Kuipers	U220994	Discharge Permit (to Land)	Discharge secondary treated domestic wastewater to land from a new onsite wastewater system.	Anakiwa Road, Linkwater	02/02/2023
40.	104B	JSL Investments Limited	U200978	Water (Take Water) (x2); (Water) Use Water (x2)	Take A Class Wairau River FMU water from an existing intake up to a maximum rate of up to 355 cubic metres per day. Take A Class Wairau River FMU water from an existing intake up to a maximum rate of up to 355 cubic metres per day outside of the irrigation season. Use water for the irrigation of up to 20 hectares of vineyard. Use water for the ancillary uses on Section 30 Hillersden SETT outside of the irrigation season.	3459 State Highway 63, Wairau Valley	02/02/2023
41.	104B	Nikau Nominees Limited	U220860	Land Use (Activity); Land Use (Land Disturbance); Discharge Permit (to Land)	Construct a new dwelling that will exceed site coverage. Undertake excavation in excess of 50 cubic metres and filling in excess of 50 cubic meters. Discharge secondary treated domestic wastewater to land via a new wastewater system.	204 Elaine Bay Road, Elaine Bay, Okiwi Bay	02/02/2023
42.	104B	P J Woolley	U060329	Water Permit (Use Water)	Use 4273 cubic metres of water per day of water taken under water permit U060329 (well P28w/1288) to irrigate up to 200 hectares of pasture and crops.	272 Chaytors Road, Spring Creek	02/02/2023

	Delegation	Consent Holder	Consent No.	Consent(s) Issued	Proposal	Site Location	Date Issued
43.	104B	Hortus Limited	U220312	Land Use (Activity) (x4); Land Use (Land Disturbance); Land Use (River Surface or Bed Activity)	Provide a RSE workers accommodation facility for a maximum of 93 workers within four existing buildings to be upgraded. Install a new sewer pipe within 8 metres of the landward toe of Roses Overflow Stopbank. Install a new sewer pipe and for associated land disturbance within a Floodway Zone. Place a sewer pipe within the road corridor (western side of Morgans Road and southern side of Swamp Road) to discharge domestic wastewater from the workers accommodation facility to Council's reticulated sewer main in Swamp Road. Undertake excavation works within 8 metres of the landward toe of Roses Overflow Stopbank. Install a new sewer pipe over Neals Drain.	140 Morgans Road, Dillons Point, Blenheim.	03/02/2023
44.	104B	Marlborough Lines Limited	U230058	Land Use (Activity)	To revoke the condition imposed in respect of the right to convey electricity in gross marked H, I, E, G, M, J, L, K, D	PO Box 114, Blenheim 7240	07/02/2023
45.	104B	B McLauchlan and Balvonie Trust	U230035	Land Use (Activity)	Install and operate one (1) FrostBoss C59 frost fan with a John Deere engine on Part Section 84 Wairau West District.	236 Wratts Road, Rapaura	07/02/2023
46.	104B	Total Vegetation Control Limited	U220507	Land Use (Activity)	Continue to operate a seasonal, roadside grass berm and general mowing.	20 Gee Street, Renwick	07/02/2023

	Delegation	Consent Holder	Consent No.	Consent(s) Issued	Proposal	Site Location	Date Issued
47.	104B	G Winfrid and K A Roberts	U220861	Discharge (to Land); Land Use (Land Disturbance)	Discharge domestic wastewater to land. Undertake earthworks (cut and fill) in excess of 50 cubic metres in relation to the installation of the wastewater system.	202 Elaine Bay Road, Tennyson Inlet	07/02/2023
48.	104B	Waitaria Bay Estate LLC	U181011	Coastal Permit	New coastal permit (replacing U040582) for the continuation of an existing swing mooring M2285 located in Waitaria Bay.	Waitaria Bay, Kenepuru Sound	07/02/2023
49.	104B	K Alexander, M and M H Preston	U230016	Discharge Permit (to Land)	Discharge treated domestic wastewater to land in a soil sensitive area from a new primary wastewater system.	29 Thomsons Ford Road, Blenheim	07/02/2023
50.	104B	A John and R J Timings	U230008	Discharge Permit (to Land)	Discharge secondary treated domestic wastewater to land from a new wastewater system.	355 Anakiwa Road, Anakiwa	07/02/2023
51.	104B	A M C Leppens	U160592	Coastal Permit	New coastal permit (replacing U011310) for an existing mooring M1509 in Punaruawhiti Bay.	Punaruawhiti Bay, Endeavour Inlet, Queen Charlotte Sound/Tōtaranui	07/02/2023
52.	104B	H Burrell and M Moorhouse	U170488	Coastal Permit	New coastal permit (replacing U020642) for an existing mooring M1726 in Sunshine Bay.	Sunshine Bay, Waikawa Bay, Queen Charlotte Sound/Tōtaranui	07/02/2023
53.	104B	A M and P M Orchard	U220888	Coastal Permit	New coastal permit (replacing U130291.01) for the continuation of existing swing mooring M3466 in Waikawa Bay.	Waikawa Bay, Queen Charlotte Sound/Tōtaranui	07/02/2023
54.	104B	Okiwi Bay Limited and J Byrman	U220852	Subdivision (Boundary Adjustment)	subdivide Lot 3 DP 556072 into two allotments as a boundary adjustment with Lot 9 DP 395691.	1891 Croiselles Road, Okiwi Bay	07/02/2023
55.	104B	C O'Hara	U230062	Discharge Permit (to Land)	Discharge permit to land	PO Box 6323	08/02/2023

	Delegation	Consent Holder	Consent No.	Consent(s) Issued	Proposal	Site Location	Date Issued
56.	104B	J B A Scott, L R Scott and S E Stocker	U230046	Discharge Permit (to Land); Land Use (River Surface or Bed Activity)	Discharge secondary treated domestic wastewater to land on Section 9 Block VIII Linkwater SD. Erect a wastewater mainline fixed to a steel cable over an unnamed stream located on Section 9 Block VIII Linkwater SD.	Long Beach Bay, Queen Charlotte Sound / Tōtaranui	08/02/2023
57.	104B	C J and S L Skellet and Polson McMillan Trustee Company No1 Limited	U230045	Discharge Permit (to Land)	Discharge secondary treated domestic wastewater to land.	286 Moetapu Bay Road, Moetapu Bay, Pelorus Sound/ Te Hoiere.	08/02/2023
58.	104B	Kesteven Farm Limited	U230024	Land Use (Land Disturbance)	Undertake soil disturbance on a HAIL site (to facilitate the construction of a concrete slab) that does not meet Regulation 8(3) of the National Environmental Standard for Assessing and Managing Contaminants in Soil to Protect Human Health Regulations 2011 on Part Section 2S Moorlands SETT.	264 Rapaura Road, Renwick	08/02/2023
59.	104B	S R, J N and W Thomas as trustees of the S Thomas Family Trust	U220995	Discharge Permit (to Land)	Discharge treated domestic wastewater to land from an existing secondary wastewater System.	67 Korimako Rise, Linkwater	08/02/2023
60.	104B	Magill Family Property Limited	U220986	Subdivision (Allotment Creation)	Subdivide the four flats on Lot 20 DP 6440 into four residential allotments.	28 Faulkland Drive, Blenheim	08/02/2023
61.	104B	AMPM Vineyards Limited, Blind River Irrigation Limited, and Saint Clair Estate Wines Limited	U220884	Land Use (River Surface or Bed Activity)	Undertake on-going works within the bed of the Awatere River to maintain a flow of water into an intake channel and intake ponds including maintaining the intake channel and intake ponds located adjacent to Lot 2 DP 8834 and Section 40 Block X Clifford Bay SD.	Awatere River, adjacent to Lot 2 DP 8834 & Section 40 Block X Clifford Bay SD	08/02/2023

	Delegation	Consent Holder	Consent No.	Consent(s) Issued	Proposal	Site Location	Date Issued
62.	104B	D M Bunt and S J Lee	U220788	Land Use (Activity); Discharge (to Land)	Construct a second dwelling. Discharge domestic wastewater to land.	24 Pipitea Drive, Rarangi	08/02/2023
63.	104B	Medway Hills Limited	U230036	Land Use (River Surface or Bed Activity)	Undertake exploratory works involving riverbed disturbance and the construction and back-filling of test pits in the dry bed of the Awatere and Medway Rivers adjacent to Part Lot 1 DP 632 for investigative purposes only.	30 Welds Hill Road, Awatere Valley	09/02/2023
64.	104B	Windermere Forests Limited	U140305	Land Use (Land Disturbance); Land Use (Land Disturbance)	Undertake earthworks to upgrade existing roads, tracks and skid sites, to construct new roads and tracks, for forest harvesting. Clear indigenous vegetation during the construction of roads.	Gibsons Road and Kaituna-Tuamarina Road, Kaituna	09/02/2023
65.	104B	E A Whiteside and J E Tosswill	U220944	Subdivision (Allotment Creation); Land Use (Activity) (x2)	Subdivide Part Lot 1 DP 4677 into two allotments. Authorise the dwelling on Lot 1 to extend beyond the recession plane of the new eastern boundary with Lot 2, and to have reduced outdoor amenity area shape and size. Install a vehicle crossing to Lot 2 of the subdivision with reduced sight visibility to the east.	3 Monro Street, Blenheim	09/02/2023

	Delegation	Consent Holder	Consent No.	Consent(s) Issued	Proposal	Site Location	Date Issued
66.	104B	The Awatere River Wine Company Limited	U190629	Land Use (Activity); Discharge Permit (To Land); Land Use (Building)	Increase the production capacity and resultant size of the existing winery from 3000 tonnes to 15000 tonnes annually including additional tanks, structures and buildings. Discharge winery wastewater up to a maximum rate of 185 cubic metres per day to land. Exceed the permitted 15% site coverage of 2124 square metres and to construct a new yard slab 1 metre from the rear boundary and to exceed the prescribed permitted 10m height.	146 Ugbrooke Road	09/02/2023
67.	104B	P J and S L Jerrett	U220850	Water Permit (Take Water) (x2); Water Permit (Use Water) (x2)	Take A Class Wairau River FMU water from a new intake (Grid Ref 1638396E 5396734N) up to a maximum rate of 2,060 cubic metres per day. Take A Class Wairau River FMU water from a new intake (Grid Ref 1638396E 5396734N) up to a maximum rate of 2,060 cubic metres per day, 5,030 cubic metres per year outside of the irrigation season. Use water for the irrigation of up to 27.5 hectares of vineyard and up to 25.5 hectares of pasture and crops. Use water for ancillary uses outside of the irrigation season.	3324 State Highway 63, Wairau Valley	09/02/2023

	Delegation	Consent Holder	Consent No.	Consent(s) Issued	Proposal	Site Location	Date Issued
68.	104B	Parsons Road Vineyard Limited	U220671	Land Use (River Surface or Bed Activity); Land Use (Land Disturbance)	Undertake works in unnamed tributaries of Walkers Stream to retrospectively shift and fill a channel (south to north alignment with western boundary) and realign this channel and to fill an unnamed channel. Undertake land disturbance within 8 metres of an unnamed tributary of Walkers Stream as part of stream realignment works and within 8 metres of Walkers Stream to install 100 metres of subsurface drainage, for 100 metres of subsurface drainage retrospectively and to remove spoil tailings.	48 Parsons Road, Wairau Valley	09/02/2023
69.	104B	F D and A M Maher	U220237	Water Permit (Take Water); Water Permit (Use Water)	Abstract Are Are FMU water up to a maximum of 407.4 cubic metres per day from a direct suction pipe. Use water for the irrigation of up to 70 hectares of vineyard.	2476 State Highway 6, Okaramio	09/02/2023
70.	104B	Millton Farm Limited	U230010	Land Use Consent	Establish up to 102 hectares of exotic plantation forest on an afforestation flow sensitive site at Middle Hill, Peggioh Road.	Middle Hill, Peggioh Road, Ward	09/02/2023
71.	104B	David Rudd Limited and CBNZ Vintners Limited.	U220925	Water Permit (Take Water); Water Permit (Use Water) (x2)	Take up to 272,195 cubic metres per year of Wairau Aquifer FMU water from wells. Use water for the irrigation of up to 156.5 hectares of vineyard and for the irrigation of 3.5 hectares of pasture and fruit trees. Use up to 15,650 cubic metres of water per year outside of irrigation season for ancillary purposes.	567 Rapaura Road, Rapaura, Blenheim	10/02/2023

	Delegation	Consent Holder	Consent No.	Consent(s) Issued	Proposal	Site Location	Date Issued
72.	104B	Gill Construction Co Limited	U220893	Land Use (Gravel Removal); Land Use (Activity)	Extract and process up to 5,000 cubic metres per year of aggregate from the Wairau River, upstream of the State Highway 63 Wash Bridge. Operate a gravel stockpile and processing site immediately upstream from the State Highway 63 Wash Bridge.	Wairau River, upstream of the State Highway 63, Wash Bridge	10/02/2023
73.	104B	C R Knolles	U230033	Land Use (Activity)	Construct a shed within the boundary setback on Lot 2 DP 1862.	Monkey Bay, Queen Charlotte Sound / Tōtaranui	13/02/2023
74.	104B	Mackey Boy Pouwhare and S L Pouwhare	U221005	Land Use (Activity)	Establish a shed in a Level 2 Flood Hazard Area on Lot 2 DP 7455.	210 Selmes Road, Rapaura	13/02/2023
75.	104B	Canterbury Pet Foods Limited	U220921	Water Permit (Take Water); Water Permit (Use Water); Land Use (Activity)	Take Wairau Aquifer FMU water from well 10224 up to a maximum rate of 125 cubic metres per year. Use water in a commercial premise on Lot 1 DP 2941. Undertake the retail activity of selling pet food and ancillary products within existing commercial premises on Lot 1 DP 2941.	4 Boyces Road, Rapaura	13/02/2023
76.	104B	J S Weir	U220560	Land Use Activity	To construct an extension to an existing dwelling which will encroach the southern boundary setback on Lot 9 DP 10651.	55 Ward Beach Road, Ward	13/02/2023
77.	104B	CMT Group NZ Limited	U220543	Land Use (Activity); Land Use (Land Disturbance)	Operate a quarry extracting up to 20,000 cubic metres of gravel per year on Lot 1 DP 495563. Operate a clean fill site on Lot 1 DP 495563.	3093 Waihopai Valley Road, Waihopai Valley	13/02/2023
78.	104B	Bob Harris Limited	U230041	Subdivision (Allotment Creation)	Subdivide Part Lot 4 DP 1774 into two allotments.	8 Hutcheson Street, Blenheim	14/02/2023

	Delegation	Consent Holder	Consent No.	Consent(s) Issued	Proposal	Site Location	Date Issued
79.	104B	Windermere Properties Limited	U220911	Water Permit (Take Water); Water Permit (Use Water) (x2)	Take Wairau Aquifer FMU water from well P28w/3239 up to a maximum rate of 25,447 cubic metres per year. Use water for the irrigation of up to 9.2 hectares of vineyard on Part Lot 1 Deeds Plan 14 (RT MB40/78) and Lots 2 – 3 Deeds Plan 14. Use water for ancillary uses on Part Lot 1 Deeds Plan 14 (RT MB40/78) and Lots 2 – 3 Deeds Plan 14 outside of the irrigation season.	244 Neal Road, Tuamarina	14/02/2023
80.	104B	J S Weir	U220872	Land Use Activity	Construct an extension to an existing dwelling which will encroach the southern boundary setback on Lot 9 DP 10651.	55 Ward Beach Road, Ward	14/02/2023
81.	104B	Sanford Limited	U211053	Marine Farm	New coastal permit (replacing U940382, MPE052, U001013 and MPE809) for the continuation, using conventional longline methods, of an existing 8.41 hectare marine farm (site 8468) located southwest of Schnapper Point.	Marine Farm 8468, Schnapper Point, Kenepuru Sound	14/02/2023
82.	104B	PH Redwood and Company Limited	U220962	Water Permit (Take Water); Water Permit (Use Water)	Abstract B Class Awatere FMU water up to a maximum of 440 cubic metres per day from a direct suction pipe located at Grid Reference 1673875E 5380622 adjacent to Lot 1 DP 400645. Use water for the irrigation of up to 8.5 hectares of crop and pasture on Lot 1 and 2 DP 558258.	367 Upton Downs Road, Awatere Valley	15/02/2023

	Delegation	Consent Holder	Consent No.	Consent(s) Issued	Proposal	Site Location	Date Issued
83.	104B	VinLink Marlborough Limited	U220936	Land Use (River Surface or Bed Activity); Land Use (Land Disturbance); Discharge Permit (To Water)	Remove willows and other exotic woody vegetation from significant wetland W89 and adjacent streams on Lot 6 DP 513742 and Crown Land Block XIII Onamalutu Survey District. Undertake land disturbance associated with the removal of willows within and adjacent to significant wetland W89 and adjacent streams on Lot 6 DP 513742 and Crown Land Block XIII Onamalutu Survey District. Discharge herbicides to water during the control of willows and exotic woody vegetation from significant wetland W89 and adjacent streams on Lot 6 DP 513742 and Crown Land Block XIII Onamalutu Survey District.	1981 Northbank Road, Wairau Valley	15/02/2023
84.	104B	T L and V L Currie and A L James as trustees of the V L and T L Currie Family Trust	U220917	Coastal Permit	Coastal permit to establish a new swing mooring (M3875) west of Moetapu Bay.	Moetapu Bay, Pelorus Sound/Te Hoiere	15/02/2023
85.	104B	M D and N C Elwood and Nelson Trustees No.7 Limited as trustees of Elwood Family Trust	U220913	Discharge Permit (to Land)	Discharge primary treated domestic wastewater to land from a new wastewater system on Lot 4 DP 19539.	Bulwer Waihinau Bay Pelorus Sound / Te Hoiere	15/02/2023
86.	104B	J W M McClintock and D J Harrison	U220905	Coastal Permit - Mooring	Coastal permit to establish a new swing mooring (M3874) in Rimu Bay.	Rimu Bay, Pelorus Sound/Te Hoiere	15/02/2023
87.	104B	B A M and C M Barnett	U220874	Discharge Permit (to Land)	Discharge tertiary treated domestic wastewater to land via an upgraded wastewater system on Lot 1 DP 6973.	Double Cove, Queen Charlotte Sound/Tōtaranui	16/02/2023

	Delegation	Consent Holder	Consent No.	Consent(s) Issued	Proposal	Site Location	Date Issued
88.	104B	F D and A M Maher	U220865	Subdivision (Allotment Creation)	Subdivide Lot 1 DP 4380 into two allotments.	48 Northbank Road, Renwick	16/02/2023
89.	104B	Yealands Estate Limited	U230054	Land Use (River Surface or Bed Activity)	Undertake exploratory works involving riverbed disturbance and the construction and back-filling of test pits in the dry bed of the Awatere River adjacent to Section 18 Block XI Clifford Bay Survey District for investigative purposes only.	534 Seaview Road, Seddon	17/02/2023
90.	104B	R Holmden	U230017	Discharge Permit (to Land)	Discharge secondary treated domestic wastewater to land via a new onsite wastewater management system on Lot 1 DP 3714.	837 Kenepuru Road, Mahoe Bay	17/02/2023
91.	104B	K D and T L Johnston	U220981	Water Permit (Take Water); Water Permit (Use Water) (x2)	Take A Class Wairau River FMU water up to a maximum rate of 363 cubic metres per day from an existing infiltration gallery #10643. Use water for the irrigation of up to 4 hectares of vineyard and 5 hectares of pasture and crops on Lot 1 DP 12169. Use water for frost protection of up to 4 hectares of vineyard on Lot 1 DP 12169.	2278 State Highway 63, Wairau Valley	17/02/2023

	Delegation	Consent Holder	Consent No.	Consent(s) Issued	Proposal	Site Location	Date Issued
92.	104B	NZSF Rural Land Limited	U220959	Water Permit (Take Water) (x3); Water Permit (Use Water) (x2);	Take A Class Waihopai River FMU water up to a maximum rate of 933 cubic metres per day from an existing intake (Well P28w/4435) at/about Grid Coordinates 1660248E 5403418N. Take A Class Waihopai River FMU water up to a maximum rate of 933 cubic metres per day, 4,424 cubic metres per year outside of the irrigation season from an existing intake (Well P28w/4435) at/about Grid Coordinates 1660248E 5403418N. Take C Class Waihopai River FMU water up to a maximum rate of 1,000 cubic metres per day from an existing intake (Well P28w/4435) at/about Grid Coordinates 1660248E 5403418N. Use water for the irrigation of up to 44.24 hectares of vineyard located on Lots 4 and 5 DP 9399. Use water for miscellaneous uses on Lots 4 and 5 DP 9399 up to a maximum of 4,424 cubic metres per year.	Confluence Vineyard, State Highway 63, Wairau Valley	17/02/2023
93.	104B	Geoffrey T Sowman (InvoCare New Zealand Limited)	U220951	Discharge Permit (to Air)	Discharge contaminants to the air from an LPG-fired cremator on Lot 3 DP 5647.	14 Hutcheson Street, Blenheim	17/02/2023
94.	104B	A J Parr	U230071	Land Use (Activity)	Install and operate an Orchard Rite 2430 frost fan with a CAT engine on Lot 3 DP 419657.	3506 State Highway 63, Wairau Valley	20/02/2023

	Delegation	Consent Holder	Consent No.	Consent(s) Issued	Proposal	Site Location	Date Issued
95.	104B	P J Woods and W A Thompson	U090720	Coastal Permit – Mooring	Change Condition 5 of consent U090720.01 to enable existing swing mooring M3235 in Ngakuta Bay to be used by a vessel up to 7.5 metres in length.	Ngakuta Bay, Grove Arm	20/02/2023
96.	104B	Mentari Trustees Ltd	U220649	Coastal Permit	Coastal permit to establish a new elasticated swing mooring (M3860) in Tawa Bay.	Tawa Bay, Queen Charlotte Sound/Tōtaranui	20/02/2023
97.	104B	M J Bushell	U150322	Coastal Permit	New coastal permit (replacing U100204) for existing swing mooring M859 in Penzance Bay.	Penzance Bay, Tennyson Inlet, Pelorus Sound/Te Hoiere	20/02/2023
98.	104B	M J Kerr	U230056	Coastal Permit	New coastal permit (replacing U040545.01) for the continuation of existing swing mooring M2268 in Waitaria Bay.	Waitaria Bay, Kenepuru Sound	20/02/2023
99.	104B	R J Griffiths	U220973	Coastal Permit	Coastal permit to establish a new swing mooring (M3879) in Thompson Bay.	Thompson Bay, Queen Charlotte Sound/Tōtaranui	20/02/2023
100	104B	P Jones	U220868	Subdivision (Allotment Creation)	Subdivide Part Section 1 Section 10 Block II Wakamarina Survey District and Section 1 Section 5 Block III Tennyson Survey District into three lots.	457 Tunakino Valley Road, Rai Valley	20/02/2023
101	104B	P H Stace and N S Stace	U220946	Land Use (Activity); Discharge Permit (to Land)	Relocate a new three-bedroom dwelling on Lot 2 DP 302644 which will be within 300 metres of frost fans not located on the same property. Discharge secondary treated domestic wastewater to land via a new wastewater system on Lot 2 DP 302644.	531A Brookby Road, Hawkesbury	21/02/2023
102	104B	Cancer Society of NZ, Marlborough Centre Incorporated	U220904	Land Use (Activity)	Undertake a special event, being Relay for Life, every two years on Lot 5 DP 399048.	Lansdowne Park, Blenheim	21/02/2023

	Delegation	Consent Holder	Consent No.	Consent(s) Issued	Proposal	Site Location	Date Issued
103	104B	W D and J M Boyce	U230004	Land Use (River Surface or Bed Activity); Water Permit (Divert Water)	Undertake works in the Awatere Riverbed to divert the Awatere River away or toward an intake channel and intake pond and maintain an existing intake channel and intake pond located adjacent to Lot 2 DP 764. Divert Awatere River water away or toward an intake channel and intake pond located adjacent to Lot 2 DP 764.	193 Awatere Valley Road, Awatere Valley	22/02/2023
104	104B	C R and J L Monk	U220987	Land Use (Activity)	Vary Consent Notice 8223034.1 Condition 2 as it relates to Lot 2 DP 390326.	13 Elliot Street, Grovetown, Blenheim	22/02/2023
105	104B	C R and J L Monk	U220974	Subdivision	Subdivide Lots 1 and 2 DP 3980326 as a boundary adjustment.	13 & 22 Elliot Street, Grovetown, Blenheim	22/02/2023
106	104B	AgCulture Limited	U220964	Land Use (Activity)	Construct an additional dwelling house to be used for workers accommodation on Lot 2 DP 11984.	59 Te Rou Road, Northbank	22/02/2023
107	104B	J P Crossman	U220275	Land Use (Activity)	Construct a second dwelling house on Lot 4 DP 513490.	1043 Taylor Pass Road, Blenheim	22/02/2023
108	104B	J D Walker and S H Scott	U220838	Discharge Permit (to Land); Land Use (Building)	Discharge secondary treated domestic wastewater to land on Lot 3 DP 303128. Construct a dwelling extension within 25 metres of a side boundary on Lot 3 DP 303128.	50 Blicks Lane, Rapaura, Marlborough	22/02/2023
109	104B	R J and L P Burnett, and H M Waller	U220707	Coastal Permit - Mooring	Coastal permit to establish a new swing mooring (M3862)in Kaiuma Bay.	Kaiuma Bay	22/02/2023

	Delegation	Consent Holder	Consent No.	Consent(s) Issued	Proposal	Site Location	Date Issued
110	104B	N D Charles-Jones and E Young	U220481	Water Permit (Take Water) (x2); Water Permit (Use Water) (x3)	Take Southern Springs FMU water from well P28w/4430 up to a maximum rate of 18,488 cubic metres per year. Take Southern Springs FMU water from well P28w/4430 up to a maximum rate of 28,160 cubic metres. Use water for the irrigation of up to 8 hectares of vineyard, pasture and crops on Lot 2 DP 360449 and Lot 2 DP 395655. Use water for ancillary uses outside the irrigation season on Lot 2 DP 360449 and Lot 2 DP 395655. Use water for frost protection of up to 8 hectares of vineyard, pasture and crops on Lot 2 DP 360449 and Lot 2 DP 395655.	117 David Street, Blenheim	22/02/2023
111	104B	E A and K J Rutherford and B E McCone	U200637	Discharge (to Land)	Discharge secondary treated domestic wastewater to land on Lots 1 and 2 DP 4922.	Te Weuweu Bay, Tory Channel, Queen Charlotte Sound/Tōtaranui	22/02/2023
112	104B	Vodafone New Zealand Limited	U230063	Land Use Activity	Certificate of Compliance to install, operate and maintain a new telecommunications facility at 136 Middle Renwick Road, Springlands, Blenheim on PT Lot 1 DP 2117.	136 Middle Renwick Road, Springlands, Blenheim	24/02/2023
113	104B	G F and R N Leov	U220832	Subdivision (Allotment Creation)	Subdivide Lot 2 DP 333014 and Lot 2 DP 378431 into two allotments.	293 Barracks Road, Waihopai Valley	24/02/2023
114	104B	Rapaura Holdings Limited	U220801	Land Use (Activity)	To operate a café/restaurant including tasting bar with increased operating hours being 7.00am to midnight 7 days a week on Lot 3 DP 7403.	309 Rapaura Road (State Highway 62), Rapaura	24/02/2023

Record No: 2346383