

Flaxbourne planting and fencing

Information Package
Regulatory Department
24 August 2023

Contents

Environmental Science & Monitoring	1
Biosecurity (Pest Management)	1
Environmental Science	3
Catchment Management	8
Environmental Policy & Planning (Freshwater)	17
Marlborough Landscape Group	18
Biosecurity ‘Jobs For Nature’	24
Harbour Functions.....	26
Building Control Group.....	27
Alcohol Licensing.....	28
Special Licenses	29
New Premises Licences.....	29
Renewed Premises Licenses.....	30
Temporary Authority Premises Licenses	30
New Manager Certificates	31
Renewed Manager Certificates.....	31
Resource Consents Section	32
Resource Consents Team Financial Year Update 2022/2023	32
Resource Consent Approvals Under Delegated Authority	34

Environmental Science & Monitoring

Biosecurity (Pest Management)

Reporting period: 26/6/2023 – 4/8/2023

(Report prepared by Liam Falconer, Brent Holms, Jono Underwood)

Boneseed

(E315-003-004-01)

Control and surveillance work was undertaken for boneseed at a number of Rarangi and Hawkesbury sites in late July/early August. A total of 15 sites were visited with 23 plants destroyed.

Joint control operations between Council Biosecurity staff and Department of Conservation staff in the Marlborough Sounds are scheduled to be conducted in early September.

Chilean needle grass

(E315-003-009-01)

Council has received multiple reports of flowering Chilean needle grass in Seddon and Blenheim which is outside of the timeframes that we would typically expect plants to be in flower. It is expected that growing conditions would not be conducive to allow the seeds to mature to a viable state, however, with this plant, nothing is ever certain. Pre-emptive control work was undertaken at the Taylor River Reserve near the Mark Smith playground to which the plants were clearly visible.

Engagement and education has been undertaken with a company that repurposes used vineyard equipment throughout Marlborough. They were found to already have good biosecurity processes in place to prevent the spread of Chilean needle grass and other invasive species.



Image 1: Flowering Chilean needle grass found at the Taylor River

Gorse

(E315-003-016-01)

One boundary complaint in the Kaiuma Bay area was received and talking through with the occupier.

Moth plant

(E315-003-020-01)

Moth plant control was carried out after reports being received at two separate sites in the month of July.

The first plant was located on a known site on Gill Crescent. The property owner notified Council of a new, mature plant he found growing in his backyard. The second plant was found by a staff member at Linkwater where he was conducting surveillance for boneseed.

Both plants were destroyed, with seed pods removed and taken for safe disposal.

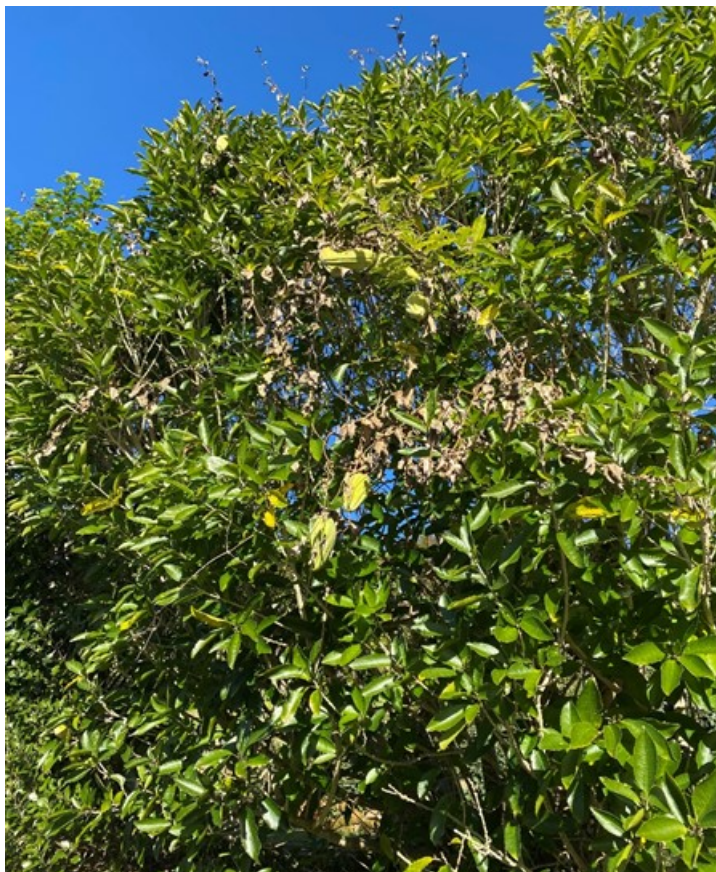


Image 2: New moth plant site identified in Linkwater

Nassella tussock

(E315-003-021-01)

Nassella tussock inspections have continued during this period to ensure that land occupiers are complying with their obligations to carry out annual control work.

A total of 62 properties were visited and of these, only three showed signs of needing further control work in order to comply with the RPMP rule later in the season. Staff continue to work with occupiers and are confident the issues will be remedied in the coming weeks.

Parrot's feather

(E315-003-022-01)

Some control work was conducted along Ruakanakana/Gibson's Creek in July after a biosecurity staff member noticed a new patch of parrot's feather had sprung up since the site was last visited in March. Control measures involved the targeted use of an aquatic agrichemical given it was growing on the edge on an active flow.

Spartina grass

(E315-003-031-01)

Council biosecurity staff carried out surveillance for spartina grass at a historical site at Vernon Lagoon at the end of June. No plants were found.

Woolly nightshade

(E315-003-036-01)

During June, 220 hours of control work was undertaken at the Port Hardy infestation on Rangitoto ki te Tonga/ D'Urville Island. This infestation has now been brought down to maintenance levels but seed is known to be long-lived.

Environmental Science

(Report prepared by Charlotte Tomlinson)

Hydrology of Marlborough Summary July 2023

(E320-001-001)

Data from the Marlborough District Council's Environmental Monitoring network was primarily used in preparing this report and supplemented with data from sites operated by the Marlborough Research Centre, MetService, NIWA, and FENZ.

Executive Summary

July continues a relatively dry winter season in Marlborough. This is in contrast to the 2022 winter season, which was the wettest winter in over 100 years in the Wairau Valley.

Rainfall was below average in northern and central Marlborough in July, with 23 mm of rain recorded in Blenheim, just 35% of the long-term average. River flows were correspondingly low in the Te Hoiere / Pelorus and on the northbank of the Wairau, with mean river flows of around 25% of their long-term averages.

The Awatere and East Coast had average to above average rainfall for the month. The Flaxbourne River had flows well above average, with two peaks on the 9th and 22nd of July. Maximum flow was 25 m³/s, which is below the mean annual flood level of 34 m³/s.

Average shallow soil moisture for July was 36% at Grovetown Park in Blenheim, slightly below field capacity of 38%.

El Niño is not yet in full force, with oceanic indicators indicating El Niño conditions but atmospheric indicators remaining neutral. Full El Niño conditions are expected to develop over the next three months. Air pressure changes will lead to more south-westerly winds across the country and stronger winds than normal. Warmer than average sea surface temperatures may reduce the intensity of cold snaps brought on by southerly air masses that occur during late winter and spring.

Rainfall

Low rainfall totals continued for much of the region in July. Compared to average July rainfall, northern and central Marlborough had much less rainfall. For example, rainfall at Tunakino was in the lowest 10% of July totals, with just 72 mm recorded (average July rainfall is 246 mm).

South-east Marlborough had average or above average rainfall in July. 81 mm of rain was recorded at Awatere at Awapiri which is near average, while at the Flaxbourne 101 mm of rainfall is well above the average of 61 mm.

Blenheim rainfall was 23 mm for the month, which is only 35% of the long-term average for July.

Monthly rainfall totals for July (compared to average) for 6 key sites in Marlborough, can be seen in Figure 1.



Figure 1. Monthly rainfall totals for 2022/23 from 6 key sites around Marlborough, compared to average monthly rainfall totals.

Table 1. Winter 2023 monthly rainfall totals (mm) at rainfall monitoring sites in Marlborough.

Site ▲	June	July
Awatere at Awapiri	124	81
Awatere Glenbrae NRFA	26	44
Beneagle at Farm Stream	36	49
Blenheim at MDC Office	22	23
Branch at Branch Recorder	57	37
Branch at Mt Morris	72	29
Flaxbourne at Corrie Downs	39	101
Kaituna Rainfall at Higgins Bridge	45	41
Kenepuru Head NRFA	78	62
Koromiko NRFA	76	46
Lake Elterwater Climate	37	97
Lansdowne NRFA	40	46
Malings	58	56
Mid Awatere Valley NRFA	92	39
Molesworth NRFA	52	41
Omaka at Ramshead Saddle	57	40
Onamalutu at Bartletts Creek Saddle	90	64
Onamalutu at Hilltop Road NRFA	106	48
Picton Climate at Waitohi Domain	45	43
Pudding Hill NRFA	49	54
Rai at Rai Falls	99	44
Rai Valley NRFA	115	50
Rarangi at Driving Range	34	31
Red Hills	139	36
St Arnaud NRFA	44	57
Taylor at Taylor Pass Landfill	26	36
Taylor at Tinpot	80	74
Te Rapa	66	160
Top Valley at Staircase Ridge	151	46
Tor Darroch NRFA	71	47
Tunakino	103	72
Upper Clarence NRFA	85	106
Waihopai at Craiglochart	18	26
Waihopai at Spray Confluence	56	35
Waikakaho	46	46
Waikawa at Boons Valley	49	61
Wairau Valley at Southwold	58	46
Wakamarina at Twin Falls	87	43
Ward NRFA	55	136
Wye at Charlies Rest	52	32

River Flows

Mean river flows for July were around 25% of their long-term average in the Te Hoiere / Pelorus area, as well as the north bank tributaries of the Wairau. Following on from a small fresh on the 8th/9th, flows receded throughout the rest of July.

Maximum flow in the Wairau was 140 m³/s on the 9th of July, receding down below 30 m³/s at the end of the month.

The Flaxbourne River had well above average flows in July, with two freshes on the 9th and 22nd. Peak flows of 20 and 25 m³/s respectively are below the mean annual flood flow of 34 m³/s.

A summary of river flows for July 2023 can be seen below in Table 2.

Table 2. A summary of river flows in Marlborough for July 2023.

Site Name	Mean Flow 2023 (m3/s)	Long-Term Mean Flow (m3/s)	% of long-term mean	Flow Record Begins	Catchment Area (km2)
▲					
Rai River at Rai Falls	4.11	15.53	26	1979	211
Pelorus River at Bryants	5.99	26.32	23	1977	375
Kaituna River at Higgins Bridge	1.39	6.67	21	1989	135
Branch River at Weir Intake	12.04	22.91	53	1958	551
Goulter River at Horseshoe Bend	3.60	12.80	28	2010	154
Waihopai River at Craiglochart	12.41	20.17	62	1960	745
Ohinemahuta River at Domain	0.55	2.19	25	2013	33
Are Are Creek at Kaituna Tuamarina Track	0.46	1.07	43	2007	32
Tuamarina River at Para Road	0.49	3.61	14	2004	100
Wairau River at Tuamarina	55.99	125.59	45	1960	3430
Omaka River at Gorge	1.73	2.29	76	1993	91
Taylor River at Borough Weir	0.55	1.54	36	1961	65
Flaxbourne River at Corrie Downs	3.36	1.33	253	2003	71
Awatere River at Awapiri	17.77	18.65	95	1977	983

Soil Moisture

Average shallow soil moisture for July was 36% at Grovetown Park, slightly below field capacity of 38%. Both June and July have had low rainfall, and farmers will be hoping for decent rainfall in August and throughout spring to recharge soil moisture.

The two maps below (Figures 2 & 3) show soil moisture deficit for New Zealand, as of the 31st of July, and the soil moisture anomaly, i.e. how much wetter or drier than normal the soil is for the time of year.

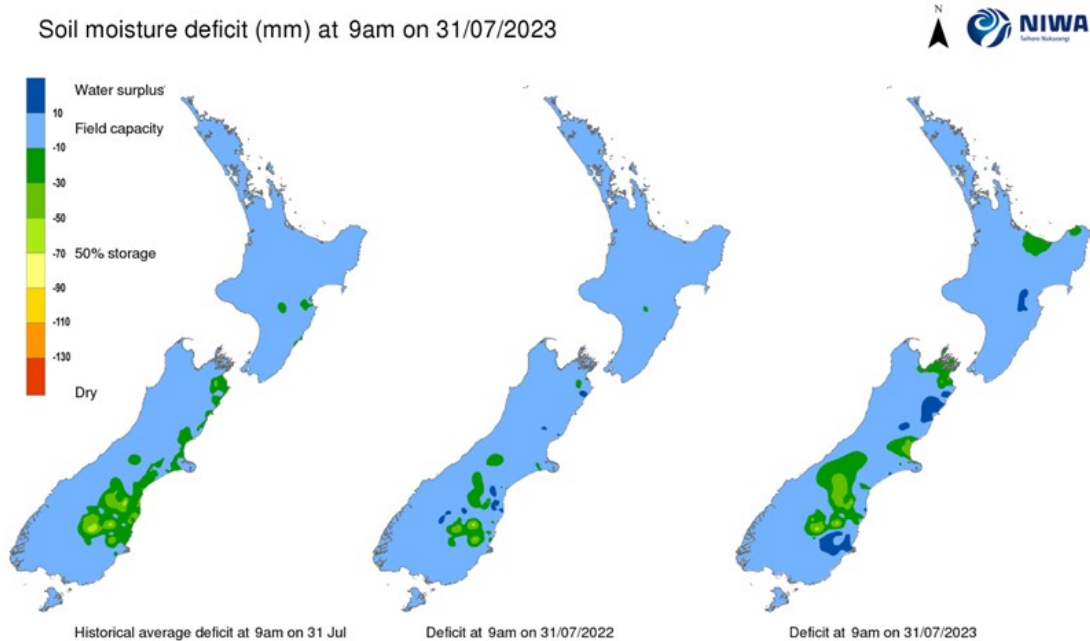


Figure 2. Soil moisture deficit maps of New Zealand, retrieved from NIWA on 31/07/2023.

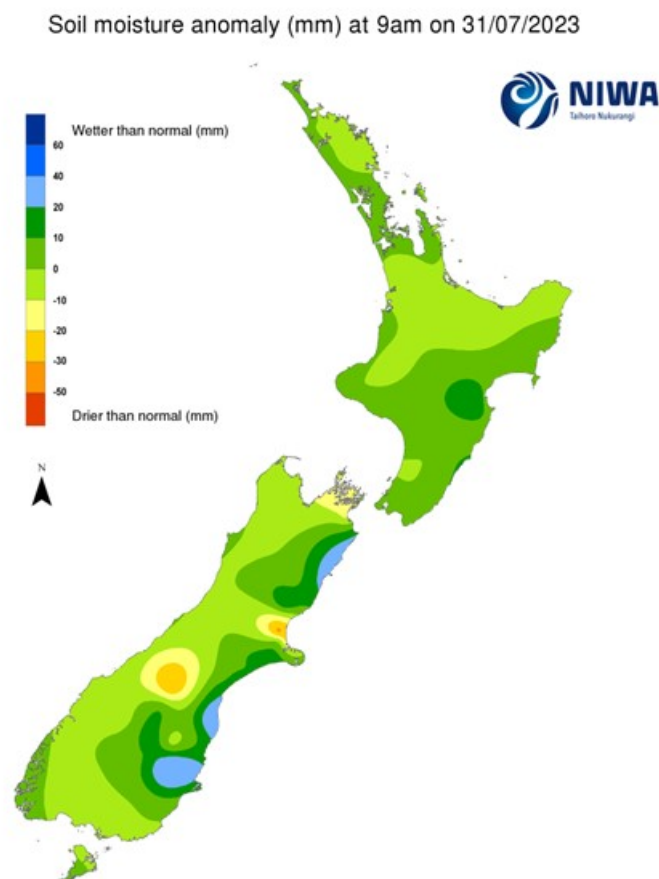


Figure 3. Soil moisture anomaly map of New Zealand, retrieved from NIWA 31/07/2023.





NIWA Seasonal Climate Outlook August – October 2023

El Niño is not yet in full force: sea temperatures in the central equatorial Pacific currently exceed the El Niño threshold, but the atmospheric indicator of El Niño (the Southern Oscillation Index), remains neutral. Full El Niño conditions are expected to develop over the next three months.

Air pressure is forecast to be above normal to the north-west of New Zealand and below normal to the south, leading to more south-westerly winds across the country. Wind speeds are also forecast to be stronger than normal. Warmer than average sea surface temperatures may reduce the intensity of cold snaps brought on by southerly air masses that occur during late winter and spring.

The last two weeks of August may bring more westerly winds, causing fronts and low pressure systems in Marlborough.

The predictions for Marlborough/Tasman from August to October are:

-  Temperature – above average
-  Rainfall – near or above average
-  Soil Moisture – near average
-  River Flows – near or below average

Catchment Management

(Report prepared by Nic Dann)

Catchment Facilitation

(E355-021-005)

Background

The Regional Catchment Facilitator position, along with a new policy position have been created from Ministry of Environment funding. \$1.5m over three years will enable staffing resourcing for the coordination and implementation of the required systems and processes for the fresh water. The work around refining the values and challenges facing catchments form the of “why” and “what” of catchment care programmes. The “how” improvements will be made to fresh water (streams, rivers, wetlands and the associated receiving environments of the many estuaries) will largely be from the implementation of the actions plans within Fresh Water Farm Plans (FWFP). The role of the Regional Catchment Facilitator is to ensure that Council works to educate, inform, support and all landowners requiring a FWFP as well as work to ensure collaboration between industry bodies, iwi, catchment groups and other service providers, such as Landcare Trust, MPI, MfE.



Current Actions

Several meetings with the grape growing industry including staffing a stall during the Grape Days conference held by NZWine has ensured that grape growing businesses and individual landowners are aware of freshwater farm plan requirements. The Environmental science team are steadily progressing with education

and awareness of risks to water quality across the wine sector and to other pastoral farmers through catchment hui.

Collaboration with the other Te Taihū councils as MDC demonstrates leadership with the catchment care and survey programmes in degraded catchments. This sharing between councils is still problematic as each catchment and organisation approach is unique. Water quality commonalities are still requiring consistent mitigations with stock exclusion, riparian plantings and erosion control have priority focus.

Iwi liaison and the development of these relationships built on trust and manākitanga has begun, with several priority areas such as Wairau Lagoons, lower Wairau River and Riverlands drains being flagged for future projects in enhancing freshwater environments. The wider iwi connections continue to be made through Te Mana o te Wai workshops.



Catchment Care for At-Risk Catchments in Marlborough

E355-021-04-06

(Report prepared by Rosanne Homewood)

	Progress at End of Year 3	Total Project Target
Plants established	27,500	36,450
Riparian/Wetland area planted (Ha)	6	4.3
Fencing completed (km)	13.4	24.3

We are currently ahead of schedule for plants established and area planted up, and on target for fencing.



Figure 1: a planting completed in Flaxbourne

Work already proposed for Year 4.

	Proposed work for Year 4
Plants	10000
Riparian/Wetland area planted (Ha)	2.5
Fencing (km)	3



Figure 2: Second angle of Flaxbourne planting and fencing

Since the last update, we have hosted our MfE analysts, whom we showed examples of funded projects and gave them an opportunity to meet and speak with landowners who have had projects funded through the MfE/MDC Catchment Care programme. The Te Hoiere Project and Catchment Care hosted a talk in Linkwater was well attended by community members. The focus of this talk, presented by Peter Hamill, was “what lurks beneath” which discussed the native species found in the waterways of the catchments and highlighted the importance of maintaining or re-establishing native riparian habitats in order to support the food chains required for aquatic native species to thrive.



Figure 3: Pete Hamill presenting "what lurks beneath" at a Linkwater Community meeting.

(Report prepared by Rachel Russell)

Background

Te Hoiere Project is a landscape scale, multi-partner restoration project with environmental, cultural, social and economic objectives. Marlborough District Council provides fund and project management for Te Hoiere Project.

Updates

Linkwater community talk – What Lurks Beneath

A community meeting organised by Te Hoiere Project's Catchment Coordinator, Karen Morrison, had a great turnout on the 19 July. The aim of the evening was to raise awareness and encourage involvement with the project, it was also a chance to hear about the Linkwater catchment groups progress to date. Guest speaker, Peter Hamill, talked about the importance of waterways which are home to a rich diversity of aquatic species that are often hidden from view.



Image 1: Karen Morrison welcomes attendees to the talk in Linkwater

Te Hoiere Project funding and actions for 2023 - 24

Project management has been working over the last month to complete reporting for the previous year and put together Annual Workplans for the 2023-24 period.

For 2023-24, there is funding to complete:

- 60km of fencing
- Plant 58,400 riparian/wetland plants
- Assess 78 fish passage barriers, remediate ten
- Fund 76,500 people hours
- Support the construction of a native nursery
- Support predator and weed control work on Public Conservation Land

The full range of activities to improve freshwater quality and biodiversity in Te Hoiere/Pelorus is summarised in Table 1.



Image 2: Aubrey Tai hosting a recent visit with fund analysts from Ministry for the Environment.

Geospatial Tool Development

One significant area of work being led by Marlborough District Council for Te Hoiere Project is the development of geospatial tools to enhance our understanding of the landscape and best mitigation actions for landowners. MDC has engaged contractors to develop a series of basic spatial land management data layers designed to enhance decision-making and prioritisation of water quality and sediment reduction mitigations for the Te Hoiere Project. These will be derived from LiDAR and other current and legacy datasets. The new datasets will be used for farm scale remediation works and will have additional use for catchment modelling or inputs into WQ accounting tools / models to achieve NPS FM objectives in catchments and / or Freshwater management units (FMU's).

A series of facilitated workshops, will be used to demonstrate the use of the data layers and ensure staff understand the landscape situation and creation of a development pathway to guide the order and prioritisation of such layers, the specification of the layers and the specification of the outputs. The contractors will demonstrate how these layers can be used or combined with other layers to further identify and prioritise sediment sources (and other water quality issues).

These tools will be used alongside the river geomorphology work recently completed by Dr Jon Tunnicliffe (University of Auckland) to help to develop a plan for identifying and managing riverbank erosion across Te Hoiere/Pelorus.

Te Hoiere Project is also involved with two other science projects outside of the current funding, these are the Nature Based Solutions for Resilience Planning and Our Land and Water Catchment Synthesis Project. Both projects are being supported by the Environmental Science team at Marlborough District Council.

Nature Based Solutions (NBS) for Resilience Planning

Funded by the Ministry for the Environment (MfE), this project is focussed on whole-of catchment rainfall-runoff and hydrodynamic inundation modelling, based on a series of actual rainfall events and projected climate change scenarios. The project, based in Te Hoiere/Pelorus, will also look at assessing the feasibility of slowing the run-off during flood events by employing a number of nature-based flood management techniques. These techniques (depending on community and iwi feedback) could include:

- Construction of water storage areas (such as detention bunds, cross-slope swales, high-flow storage, wetlands, leaky barriers),
- Targeted afforestation or native restoration,

- Increasing agro-forestry,
- Reconnection of rivers to paleochannels and,
- Increased wetland restoration.

The science modelling work is to be conducted by Dr Jon Tunncliffe, building on the geomorphology work he is currently concluding in the Te Hoiere. As part of the funding, pre-project facilitated iwi and community workshop/s are planned. These will provide an opportunity for nature-based solutions with cultural and community benefits to be included, with the intention that outcomes of these discussions be summarised and incorporated into the modelling work.

Dr Tunncliffe is delivering the results of his Te Hoiere Geomorphology work on Thursday 24 August at Millers Rest, Rai Valley. As part of this presentation, he will also introduce and discuss the concept of nature-based solutions.

Our Land and Water Catchment Synthesis Project

This project is undertaking research in three catchments across New Zealand, including Te Hoiere. This research is seeking to estimate (through a complex GIS model) the scope of land practice and land use change over a 20-year time horizon that might be required to achieve the agreed water quality outcomes for those catchments. It will then attempt to validate if such changes are actually achievable at an individual farm business level.

The work is also novel in that it is looking to ensure that the order of mitigation cost curves (the assumptions that determine how the modelling applies mitigation) reflect farmer preferences and other external factors, not just the assumed financial drivers. Manaaki Whenua Landcare Research (Alex Herzig) are doing the actual modelling, while Perrin Ag (Lee Matheson) is delivering all the model inputs and then undertaking the business case validation.

Table 1

Summary of Te Hoiere Project funding and actions for 2023 - 24

Fund	Funder	Year	Total Funding (2023 – 24)	Actions	Metrics
Freshwater Improvement Fund	Ministry for the Environment	Year 3 of 5	\$490,952	<ul style="list-style-type: none"> Riparian mitigation actions Dung beetle farm packs Educational workshops Catchment Care Officer (overheads) 	<ul style="list-style-type: none"> No of plants planted (3,500) Area of planting (1.1ha) Length of fencing (20km) No. of people hours (4,176)
Jobs for Nature 0021	Department of Conservation	Year 3 of 4	\$1,991,167	<ul style="list-style-type: none"> Early Win (Forest & Bird) Predator Control Supplies 	<ul style="list-style-type: none"> Predator Pest, Pest Plant, Restoration Planting No. of people hours (10,900)
				<ul style="list-style-type: none"> Native Nursery (Ngati Kuia) Kaitiaki Coordinator 	<ul style="list-style-type: none"> Construction of commercial nursery No. of people hours (10,900)
				<ul style="list-style-type: none"> Long Term (MDC) – fencing, planting, pest plant control Admin staff, Field staff (salaries) 	<ul style="list-style-type: none"> Fencing (20km) Restoration Planting (12 ha) Pest Plant Control (12 ha) GIS reports for catchment No. of people hours (27,580)
At Risk Catchments Fund	Ministry for the Environment	Year 2 of 3	\$2,486,642	<ul style="list-style-type: none"> Project Management Research Programme Communications Monitoring Programme Catchment group support Events Programme Restoration Guides Education Programme Kaitiaki Ranger (overheads) 	<ul style="list-style-type: none"> No. of historical/cultural sites maintained or improved (1) No of plants planted (18,000) Length of fencing (20km) No. of fish passage barriers assessed (78) No. of fish passage barriers remediated (10) No. of people hours worked (22,772)

Fund	Funder	Year	Total Funding (2023 – 24)	Actions	Metrics
				<ul style="list-style-type: none"> Cultural Mapping Māori Water Classification System Mātauranga Monitoring 	
				<ul style="list-style-type: none"> Actions to improve water quality e.g. fencing, planting, wetland restoration Fish passage barrier mitigation 	
				<ul style="list-style-type: none"> Land transition strategy Geospatial tool development Riverbank erosion plan Sediment Monitoring (Forestry) 	
Nga Awa Bio 18 Fund	Department of Conservation	Ongoing since 2019	\$209,000	<ul style="list-style-type: none"> Resourcing for Ngāti Kuia and Rangitāne to allow for full participation in Te Hoiere Project Map historical footprint of taonga species Habitat restoration e.g. Ruapaka restoration Baseline information gathering and monitoring to inform re-establishment of taonga species (whio, kākahi, kanakana, tuna) Threatened species populations and habitat are maintained and enhanced (predator control feasibility follow up). 	<ul style="list-style-type: none"> Deeds signed and funds transferred for mana whenua participation. Mapping and research on taonga species Monitoring of predator control success of target species. Restoration mahi at significant sites
				<ul style="list-style-type: none"> Part-time C-Band Ranger (DOC) Fish barrier assessments on PCL 	No. of fish barriers assessed on PCL.
				Project Manager contribution	Deed signed for Project Manager
				Coordinate with other agencies to agree on a monitoring plan and site locations.	Monitoring plan.
				Eco-sourced seed collection	
				Hospitality and travel	

Environmental Policy & Planning (Freshwater)

(Report prepared by Sarah Pearson)

Update on National Policy Statement for Freshwater Management 2020 (NPSFM) implementation – to June 2023 (N100-01-04-01)

First Round of Engagement

As detailed in the April 2023 Environment and Planning Committee information package the first round of community engagement relating to implementing the NPSFM was extended to the end of the June 2023.

This first round of engagement sort to find out where people were interacting with freshwater and the activities they were undertaking; what they valued about freshwater and what their aspirations/ visions were for freshwater in the region. Feedback was also sort on the proposed six Freshwater Management Units for the region.

At the end of June almost 250 submissions had been received, up from just over 100 at the end of April 2023.

Staff are currently working through and analysing the submissions and will provide a full report on all submissions to the next Environment and Planning Committee meeting scheduled for 5th October 2023.

What's Next

Over the next month values will be identified for each FMU and proposed community visions and environmental outcomes will be drafted for each FMU.

For each value, attributes will be determined with assistance from the Environmental Science team and assessments made against the current state to determine where the greatest focus will need to be to meet environmental outcomes.

Second Round of Engagement

Due to the extension of the first round of engagement, the second round of engagement has been moved to start in the first week of November and run for six weeks.

This will check in on the FMU values and ask for feedback on the proposed community visions and environmental outcomes.

It will also provide the community with an opportunity to see how values will be measured, through attributes, what our current state of the environment is in relation to the NPSFM limits and what areas will need to be targeted for improvements.

Engagement with tangata whenua

Engagement work is also continuing through the Te Puna Kōrero ki Te Taihū group with the eight Te Tau Ihu Iwi where we are moving into a wānanga / discussion phase exploring what Te Mana o te Wai means in Te Tau Ihu and working at having a shared understating of the NPSFM with a focus on Mahinga kai, setting freshwater targets and limits and water allocation and use, based around activities. It is anticipated that in the first half of 2024 we will come together to combine community and tangata whenua feedback into policy which will become a variation to the PMP. Māori

Staff are also continuing to work separately with Ngāi Tahu and Ngāti Kuri.

Summary

Almost 250 submissions were received from community through engagement round one.

Next engagement round has been moved to start first week in November for six weeks.

Engagement with Marlborough's tangata whenua is continuing.



MINUTES
Marlborough Landscape Group
Friday 9 June 2023, 1pm, Merlot Room, Chateau Marlborough

Present: Cllr Raylene Innes (co-chair), Tim Newsham, (co-chair), Helen Ballinger, Jan Johns Cllr Barbara Fauls, Jan Richardson, Alan Johnson, Pete Hamill, Bev Doole (co-ordinator), Linda Craighead, Siobhan Allen (left 3.30), Chris Beech (left 3.30), Sarah Leighton (minutes)

Guest: Andy White, Rivers and Drainage Engineering manager

Apologies: Richard Hunter, Jane Tito, David Dillon, Kaz Holland, LinLin Yang, Mondo Kopua

Welcome Cllr Innes welcomed everyone to the meeting.

1. Confirmation of minutes of previous meeting (10 February 2023)

2. Actions from 10 February 2023 meeting:

Action Point	To do	Who
1.	Invite Jane Tito, Manager Parks and Open Spaces, to April meeting for update on progress on reducing spraying at Council reserves. COMPLETED, however unavailable today - deferred	Bev
2.	Invite Council solicitor Robert Foitzik to the April meeting to give guidance on Strategy review and terms of reference. COMPLETED – guidance received in writing	Bev
3.	Send letter to boards of trustees to encourage retaining trees on school grounds. COMPLETED	Bev
4.	Give presentation on soil carbon sinks to the April 2023 Landscape meeting. DEFERRED	LinLin
5.	Connection with iwi – arrange June 2023 meeting with MDC Māori ward councillor and Kaihautū DEFERRED	Richard
6.	Keep in touch with Richard Coningham on recruitment of a new project manager for the Wairau River Regional Park Plan. Andy White, MDC Rivers and Drainage Engineering manager, introduced himself to the group. Rivers management is moving from flood control to a more integrated approach of catchment management and community involvement. Andy had previous experience with the lower Wairau scheme with a key part being developing a relationship with iwi.	Cllr Innes

	<p>Andy notes the importance in communicating and engaging well with iwi (Ngāti Toa, Rangitāne and Ngāti Rarua) in what we are trying to achieve regarding the Wairau River Regional Park project.</p> <p>Andy requires space to re-engage with the three iwi on this project, and he is confident the process will move forward in the second half of this year. Council is committed to the project.</p> <p>Tim reported that \$100K of Better Off funding has been confirmed for the appointment of a contract consultant to co-design the project with iwi.</p>	
7.	<p>Approach Jane Tito and Andy White at Council about potential to plant a native bush at Rema Reserve and/or Sutherland Stream and report back to Landscape Group.</p> <p>Forest & Bird are looking for an area to plant an urban forest. The issue is how to work in with Council on this – where can be planted, which species, and ensuring the right tree in the right place.</p> <p>Andy – Rivers Dept view is changing about planting trees in floodways, rather than a ‘no go’ approach. For instance, there are flood control benefits in restoring wetland areas and natural rivers management, however this needs to be evidence based. He noted that any plantings must be mindful of impacts on flooding and biodiversity.</p> <p>Suitable areas for planting in or near a floodway would need to be identified.</p> <p>Peter urged a holistic approach, with predator control installed alongside new plantings to ensure biodiversity is protected.</p>	Jan/Forest & Bird
8.	<p>Have a workshop to review the tree policy and come up with any changes. Then discuss with Jane Tito</p> <p>Helen received feedback/had a workshop with arborist Brad Cadwallader. He has now sent Helen suggestions for amendments to the tree policy. Helen has forwarded these to Jane.</p> <p>Linda explained that the tree policy applies only to Council land, and the MEP deals with notable trees on public and private land.</p> <p>Brad’s suggestions are around the removal of notable trees and making the process clearer.</p> <p>Linda explained that any proposed removal of notable trees on Council reserve land must go through an internal process and is tested against the tree policy and a recommendation is made to the Assets and Services committee. If approved, the next stage is to apply for a Resource Consent.</p> <p>Helen will email the suggestions to Linda, Clr Faulls and Clr Innes</p>	Helen + volunteers

9.	Invite Council Catchment Care co-ordinators to present to June meeting DEFERRED	Bev
10.	Send out 2018 MLG Strategy, Council Tree Policy and Notable Tree section of MEP ahead of April meeting COMPLETED	Bev
11.	Send 2023 meeting calendar invites April 28, June 9, August 4, October 13, December 8. COMPLETED	Bev

3. Correspondence

In: Tua Marina truck park resource consent application withdrawn (rata tree submission); School responses Bohally and Lake Rotoiti; Wither Hills Farm Park review Council request for feedback.

Out: Letter to boards of trustees to encourage retaining trees on school grounds

Tim reported that he has been contacted by the acting principal at Spring Creek School for advice on planting and how to seek funding.

4. Work Streams

Climate Change

Advocate for more tree planting to mitigate the effects of climate change: capturing carbon, providing shade and protecting biodiversity. Greening Blenheim bush area. Helen, Chris, LinLin, Richard, Jan J, Jan R

- LinLin - presentation on soil carbon sequestration deferred.
- Jan – Forest & Bird exploring the potential for an urban native forest within walking distance in Blenheim. (See actions above).
- Chris – is there potential for further planting at Marshall Place, opposite the Boathouse Theatre, although noted under old River Policy this was not possible?
- Andy – would like to have funding confirmed before decisions can be made about where possible planting locations could be. These ideas need to be tested against science/model with more exploring to be done. Because there is so much sensitivity around the flood capacity in this area, we require a scientific approach to guide decision-making. He requested a list of potential planting sites to consider
- Rema Reserve is a storm water overflow, which may make it unsuitable for planting as an urban forest.

Te Ao Māori – connections with the Māori world

Promote ways for MLG to connect with and respond to iwi projects and processes. Richard, Tim

- Nothing to report

Advocacy – connect with industry groups

MLG representatives work as conduits enabling flow of information, concerns and solutions with industry groups. Siobhan (Forestry), David (Farming), Mondo (Winegrowing)

Siobhan gave a brief update on landscape and biodiversity initiatives in the forestry industry:

- A QEII covenant for 400ha in the Kaiuma/Pelorus catchment

- \$40,000 pledged to support the Tasman Environment Trust for who protection
- One Forty One is adding wetland protection, predator control and wilding pine control to its work programme
- Her team has trapped 5,000 possums this year.
- Siobhan's company manages Marlborough Regional Forestry and is working to ensure Council is installing pest control
- Top of the South Wood Council is leading a schools native planting project on the Wither Hills
- Facebook page set up to share good stories from the industry
- Te Hoiere project is an opportunity to get feel-good stories out to the community

Wairau River Regional Park

Be part of the Community Advisory Group appointed by Council's Rivers Department to develop a Wairau River Regional Park. Tim, Kaz

- Referred to in Actions list above.

Go Green not Brown – reduce sprayed areas

Campaign to encourage alternatives to weed spray and reduce the visual impact of brown-sprayed areas on Council reserves, vineyards, roadsides etc. Tim, Jan J, Kaz

- Submission to Council made one year ago, still awaiting progress report from Jane Tito
- Marlborough Roads appears to be making improvements with more judicious spraying along some roadsides and around signs

5. General Business

- *Council review of notable tree policy*
The policy in the proposed MEP is being reviewed to see if more minor tree maintenance work on a notable tree could be done without requiring a resource consent. An arborist report would still be required. There is a Council heritage fund that private landowners can apply to for financial support. Any variation to the MEP would be publicly notified.
- *Waihopai Valley gum trees*
A eucalyptus beetle has been causing die-back among Euc. Viminalis in the Waihopai Valley. This is a biosecurity issue, and the team at NZ Dryland Forests Innovation is investigating.
- *Resignation of David Dillon*
David Dillon, through Jan Johns, tendered his resignation from the Landscape Group due to ill health. David has been the Federated Farmers representative on the group since it started in 2003. He has been a stalwart advocate for trees in the landscape and hosted an excellent field day on his property in 2022. Co-chair Tim Newsham acknowledged David's contribution in bringing different views to the table and his increased appreciation of indigenous plantings over the years.

Clr Faulls and Innes will arrange for Mayor to send a letter of thanks to David for his contribution to the Marlborough Landscape Group.

6. Review of MLG Strategy

The Marlborough Landscape Group was set up in 2002 after community concern about the effects on landscape from the rapid increase in changes to land use on the Wairau plains. Impacts included the loss of wetlands, shelterbelts and historic trees through viticulture. In the

past decade our focus has widened to include hillside housing development, tracking, forestry harvesting and other landscape impacts on public and private land.

The Marlborough Landscape Group provides a forum of different perspectives for Council to call on and there is substantial knowledge and experience at the table.

The MLG Strategy was last reviewed in 2018 with the mission to: *Provide leadership and inspire the community and stakeholders to protect and enhance Marlborough's landscape through education and advocacy, in partnership with Council strategies*

A subsequent cut to the budget affected the role and effectiveness of the group. Work Streams were established but little progress made due to less engagement with Council staff and inability to gain traction with councillors on issues such as the removal of airport trees, protection of notable trees and efforts to find a site for an urban forest.

The aim of this strategy review session, facilitated by Bev, was to assess where the Group is at and where it wants to be.

What MLG has achieved:

- Taylor River planting has been very effective, appreciated by those who use the walkway and overall increased recreational use. It was also an opportunity for the Landscape Group to work closely with the Environmental Science, Rivers and Parks teams at Council and help break down silos between departments.
- Establishment of Greening Marlborough grants scheme to encourage native plantings on vineyards. This was subsequently taken over by Council when budget was withdrawn from the Group.
- Engaged with Council policy team to help develop MEP Landscape chapters/policy.
- Several successful plantings achieved through Council funding supplied via the Landscape group. Eg. Kahikatea Reserve in Spring Creek, Grove Road plantings
- The driver behind the Wairau River Regional Park project, which will enhance landscape and recreational opportunities as well as help Council manage dumping and vandalism.
- A successful field day at The Throne aimed at the farming community to show the aesthetic and economic benefits of growing trees

Areas that need improvement:

- Group has not always been included to provide advice at the front end of Council processes/projects
- Lack of profile within Council - Andy noting in his two years of being with Council he had not heard of the group.
- There are still few regulatory requirements around vineyard development to ensure some protection for shelterbelts, wetlands and established trees, or replace with plantings for biodiversity
- Lack of feedback or initiatives from industry representatives
- Industries are unclear on what the group is and what they can utilize the group for
- There has been a drop off in feedback/support from Council's Rivers and Reserves staff
- There has been a shift from Landscape issues and crossing over into biodiversity and climate change. Need clarity of purpose to avoid duplication/overlap with other Council forums

Ideas for a way forward:

- Focus on Climate change/climate action to help Council implement its climate change policy
- Greater advocacy for landscape values with community and industry groups and finding ways to exchange information
- Broaden focus beyond the Wairau Valley
- Engage with Council's Biodiversity Working Group once the National Policy Statement on Indigenous Biodiversity is confirmed.
- Do not make any submissions on Council processes. Members are able to do this as individuals or through other groups but may not refer to their membership of the Landscape Group.
- Re-establish a trusting and respectful relationship between Council and the group. Key Council staff to attend meetings on a regular basis to stay connected.
- Ensure effective industry representatives are at the table to improve engagement.
- Find one project that promotes education, biodiversity and landscape values, climate action and community engagement. Example being the Blenheim urban forest idea, we would educate on the biodiversity of planting trees, the benefit to climate change, having businesses involved and sponsorship.

Questions that need to be addressed:

- Is the group still relevant?
- What is the group's purpose?
- What is the appetite in Council to continue to support and engage with the Group?
- What are the issues we want to focus on - biodiversity rather than landscape?
- How could the Group interact with Government's NPS for Indigenous Biodiversity? <https://environment.govt.nz/assets/publications/biodiversity/National-Policy-Statement-for-Indigenous-Biodiversity.pdf>

Next steps

- At the August meeting decide whether the Landscape Group is still relevant and whether to continue.

Next meeting: 4 August 2023, 1pm, MDC Committee Room

Actions from this meeting:

Action Point	To do	Who
1.	Email suggested changes to tree policy to Linda, Clr Faulls and Clr Innes	Helen
2.	Provide a list of potential urban forest sites to Andy (Rivers Team) and Jane (Parks and Open Spaces) to consider.	Climate Change work stream: Helen, Chris, LinLin, Richard, Jan J, Jan R
3.	Arrange for Mayor to send a letter of thanks to David	Clr Faulls and Innes
4.	Provide any updates on Wairau River Regional Park progress	Andy

Biosecurity ‘Jobs For Nature’

(Report prepared by Rob Simons)

Restoring and Protecting Flora project’ update (E315-021-002-02)

The jobs for nature funded ‘Restoring and Protecting Fauna Project’ is now operating in its third and final year and the last quarterly report (Q8) to conclude year two was submitted in July to the project’s lead The Nature Conservancy (TNC). Since the project’s commencement in 2021 the Marlborough District Council’s Biosecurity Section has provided 2875.5 FTE hours of operational and liaison support work to ensure the successful implementation of the project, including 136 FTE hours for the period 01 July 2023 – 31 July 2023.

One of the Project’s key objectives is to carry out weed control (to treat) 17000 hectares within ecological significant areas across Te Tau Ihu to protect or enhance the biodiversity at those sites from invasive weed threats. Figure 1. summarises the project’s mile stones in Marlborough which will contribute to the project’s overall objective.

In June 2023 project staff assisted in an aerial survey to determine the extent of wild kiwifruit infestations across specific sites in the Marlborough sounds. This (weed-led) work has contributed to MDC Biosecurity’s ongoing work to gather information on wild kiwifruit in Marlborough to help formulate an RPMP proposal for the wild form of the species. Approximately 200 hectares were flown resulting in the discovery of numerous infestations previously not known about. Figure 2. shows a large site (approximately 300 sqm) previously occupied by a dense canopy of wild kiwifruit and removed by Kumanu Environmental.

Reporting period Ha. gained/lost	Total at end of Q8 30 June 2023	Q9 Period 01 July – 31 July 2023	Quarter 9 Total	Project Total to date
Total sites area Marlborough (ha.)	2251	–	0	2251
Total Operational areas (ha.)	921	–	0	921
Weed_Led aerial Survey area covered (ha.)	208.55	–	0	208.55
Weed_Led area treated (ha.)	0.08	–	0	0.08
OMB treated area treated (ha.)	17.6279	–	0	17.6279
Site_Led area treated (ha.)	237.4	5.4	5.4	242.8
Total area receiving benefits (ha.)	1182.55	–	0	1182.55
Target weeds controlled	9279	57*	57	9336
Total hectares treated/surveyed excl OMB	446.03	5.4	5.4	451

Figure 1. * Wilding conifers controlled at Boon Valley



Figure 2. Jobs for Nature team Kumanu Environmental assist MDC Biosecurity with Kiwifruit removal at Punga Cove.

Harbour Functions

(Report prepared by Captain Jake Oliver)

Nautical updates:

Marine Farm Auditing

Work has commenced to reinstate Harbourmaster led marine farm auditing within the region. This initially will be conducted alongside industry audits. This project will be used to gauge the levels of work and resources required to manage the full auditing of the marine farming industry within the team.

Marlborough Harbour Operations Map

A project has commenced in partnership with Port Marlborough to use data and information to display activities and permits for hazardous works within Picton Harbour. This system will be GIS based and provide a public version allowing visibility of activities and works within the Harbour. Whilst a beneficial tool for the iRex works, this project has a long-term future to assist with risk management and spatial allocation across the Marlborough Harbour.

Harbour Risk Assessment

A review of the Harbour Risk Assessment has commenced within the Harbourmaster's Team. This review will be an interim review prior to the main iRex works beginning and lay the foundation for an update later in the year once the Navigation Safety Plans (NSP) for the construction works have been approved. Once the NSP has been approved, then a follow up review of the Harbour Risk Assessment will commence. The intention is that the risk assessment will be reviewed at intervals of no greater than six months during the construction works. Once the construction works are completed then a full review of the Harbour Risk Assessment will be necessary.

Coastal Updates:

Water Quality state of the Environment (E325-002-001)

Monthly water quality monitoring of Tōtaranui/ Queen Charlotte Sound, Kura te au/ Tory Channel and Te Hoiere/ Pelorus Sound continues as scheduled.

MDC have had several queries from the public regarding algal blooms in both Tōtaranui/Queen Charlotte Sound and Pelorus/Te Hoiere Sounds (which are common this time of year). We have collected water samples from Whatamango Bay and Nydia Bay and these were analysed by Cawthron Institute. Laboratory results show both samples are non-toxic to humans. MDC will continue to monitor algal blooms and will report if any samples show toxicity to humans.

Intertidal Monitoring (E325-002-002)

The Nautical and Coastal team are preparing for summer fieldwork for estuarine monitoring which will begin early November. The coastal science team is currently working with contractors Salt Ecology to transfer some of the fieldwork responsibilities back to MDC.

Shipwake Monitoring (E325-007-001)

Biennial monitoring of the shoreline profile of Queen Charlotte Sound/Tōtaranui and Tory Channel/Kura te au will commence this summer. Monitoring of the subtidal and intertidal ecology is scheduled for March. Currently the Nautical and Coastal team are scheduling fieldwork and engaging with Contractors Ayson+ and Davidson Environmental to secure services for beach profiling and subtidal monitoring.

Building Control Group

Building Control - Building Consent Authority (BCA) & Territorial Authority (TA) Activity June-July 2023.

June and July saw a continued decline in demand for building consents. However, it is not all doom and gloom as there is still a lot of activity in the sector with some large projects currently underway or about to commence. Although 2023 is likely to produce fewer new homes than were previously consented in 2022 the industry is still on target to build 200 new dwellings for the calendar year.

This doesn't mean there aren't builders and developers going through some pain. Any downturn in the market comes with an impact and casualties. Traditionally, largely due to the wine industry, Marlborough has been sheltered from some of the impacts of reduced demand that the rest of the country has experienced. Going forward it is expected that the downturn still has some legs to run however projects such as the iReX, Te Tātoru o Wairau, and the Summerset Retirement Village will continue to keep the commercial sector busy for the near foreseeable future.

Building Consent Authority Activity for June 2023

Total Consents issued

- Total of 111 consents, with a total value of \$19,908,557.97
- This total included 11 new dwellings, with a value of \$7,514,899.97

Total Consents received.

- Total of 122 consents, with a total value of \$18,380,970.00
- This total included 8 new dwellings, with a value of \$4,207,720.00

Processing stats for June 2023

- 91% of building consent applications within statutory timeframes.
- 98% of code compliance certificates were issued within statutory timeframes.

Building Consent Authority Activity for July 2023

Total Consents issued.

- Total of 100 consents, with a total value of \$19,922,197.00
- This total included 14 new dwellings, with a value of \$9,031,220.00

Total Consents received.

- Total of 104 consents, with a total value of \$9,768,470
- This total included 1 new dwellings, with a value of \$510,400.00

Processing stats for July 2023

- 95% of building consent applications within statutory timeframes.
- 95% of code compliance certificates were issued within statutory timeframes.

Alcohol Licensing

A100-04

Attached is a schedule of applications for alcohol licences issued by Marlborough District Licensing Committee under delegated authority from 17 June 2023 to 31 July 2023.

**Alcohol Licences issued by the Marlborough District Licensing Committee
From 17 June 2023 to 31 July 2023**

Special Licenses

Licence Number	Applicant	Location	Event	Date/s
SPC/034/2023	Sahara New Zealand Limited	6 Kinross Street, Blenheim	2023 Marlborough Home & Garden Show	7 to 9 July 2023
SPC/036/2023	Begin Distilling Limited	6 Kinross Street, Blenheim	2023 Marlborough Home & Garden Show	7 to 9 July 2023
SPC/037/2023	Friends At Bohally School	37 McLauchlan Street, Blenheim	Quiz night school fundraiser	12 August 2023
SPC/038/2023	Simon Charles Barker	17 Redwood Street, Seddon	Fundraising auction	20 August 2023
SPC/039/2023	Blenheim Musical Theatre Inc	81A Lakings Road, Blenheim	Theatre	7 to 15 July 2023
SPC/040/2023	Blenheim & Districts Highland Pipe Band Inc	5 Stephenson Street, Blenheim	Blenheim Pipe Band Fundraiser	22 to 23 July 2023
SPC/041/2023	Allan Scott Wines & Estates Ltd	26 Havelock Street, Renwick	Stars on Stage	18 August 2023
SPC/042/2023	Waitaria Bay Settlers Hall Inc	5678 Kenepuru Road, Kenepuru Sound	Social Friday Events	7 July 2023 to 5 July 2024
SPC/043/2023	St Marys School	61 Maxwell Road, Blenheim	150th Jubilee dinner	1 July 2023
SPC/044/2023	Marlborough Bridge Club	Cleghorn Street, Blenheim	The Howarth Cup Bridge Tournament	14-15 October 2023
SPC/045/2023	Kaitlyn Zoe Pike	1 C Foster Street, Seddon	Gumboot Friday fundraiser	29 July 2023
SPC/046/2023	Tasman Rugby Union Inc	6 B Lansdowne Street, Blenheim	2023 NPC fixtures	21 July 2023 to 21 October 2023
SPC/048/2023	Tasman Rugby Union Inc	6 B Lansdowne Street, Blenheim	Ranfurly Shield 50 Year Reunion	28 July 2023

New Premises Licences

Licence Number	Applicant	Licence Type	Premises	Expiry Date
OFF/026/2023	Brigid Mary Hammond	Off Licence	Hampshire Vineyards	17 July 2024
OFF/034/2023	Frenchwi Limited	Off Licence	Scotch Wine Bar	17 July 2024
ON/029/2023	Frenchwi Limited	On Licence	Scotch Wine Bar	17 July 2024

Renewed Premises Licenses

Licence Number	Applicant	Licence Type	Premises	Expiry Date
OFF/015/2023	Tupari Wines Limited	Off Licence	Tupari Cellar Door at The Station	09 April 2026
OFF/017/2023	Te Whare Ra Wines Limited	Off Licence	Te Whare Ra Wines Limited	21 April 2023
OFF/027/2023	Theresa Linda Joy Horton, Thomas Bruce Horton	Off Licence	Cosy Corner	14 May 2026
OFF/028/2023	General Distributors Limited (AKL)	Off Licence	Countdown Blenheim	22 June 2026
OFF/029/2023	Woodbourne 2010 Limited	Off Licence	Woodbourne Tavern	27 May 2026
OFF/030/2023	Bro & Cuz Limited	Off Licence	Bro & Cuz Limited	
OFF/032/2023	Tuatahi Wines Limited	Off Licence	Tuatahi Wines Limited	21 June 2026
ON/023/2023	Thai9 A Restaurant	On Licence	Thai9 A Restaurant	01 June 2026
ON/025/2023	Woodbourne 2010 Limited	On Licence	Woodbourne Tavern	26 May 2026
ON/026/2023	CPR Coffee 2015 Company Limited	On Licence	Catalyst Cafe	16 May 2026
ON/027/2023	Macksimus Limited	On Licence	Cork & Keg	14 June 2026
ON/032/2023	MJ's Services 2022 Limited	On Licence	MJ's Cafe	06 July 2026

Temporary Authority Premises Licenses

Licence Number	Applicant	Licence Type	Premises	Expiry Date
ON/053/2021	Sai Danish Trading Limited	On Licence	Zaika Indian Restaurant & Bar	30 September 2023
ON/007/2022	Golden Vineyards Limited	On Licence	Marlborough Public House	07 November 2023
ON/016/2022	Myles Holding Limited	On Licence	The Barn Bar And Grill	23 September 2023
ON/038/2023	Boom Town Brewing Co. Limited	On Licence	Boom Town Beer Garden	23 November 2023

New Manager Certificates

Certificate Number	Applicant	Premises	Expiry Date
CERT/064/2020	Sandra Ruth Anderson	Pak'n Save Blenheim	04 July 2026
CERT/061/2023	Terri-Lee Dawn Shirley	New World Blenheim	19 June 2024
CERT/062/2023	Brigid Mary Hammond	Tupari Wines Limited	19 June 2024
CERT/063/2023	Lynda Mary Dunlop	Four Square Spring Creek	19 June 2024
CERT/072/2023	Mrinal Chandra Jha	Raupo Cafe & Restaurant	26 June 2024
CERT/073/2023	John Harcourt McCarthy	Whitehead Park Bowling Club Incorporated	26 June 2024
CERT/074/2023	Diane Georgina Ponder	Whitehead Park Bowling Club Incorporated	18 July 2023
CERT/075/2023	Andrew David Gillions	Huia Estate Vineyards Limited	26 June 2024
CERT/077/2023	Chelsea Rose McCusker	Countdown Redwoodtown	19 July 2024
CERT/078/2023	Santiago Vadillo Reyes	Spy Valley Wines Limited	26 June 2024

Renewed Manager Certificates

Certificate Number	Applicant	Premises	Expiry Date
CERT/033/2022	Lucy Anne Walter	Te Whare Ra Wines	30 May 2026
CERT/044/2022	Luciana Cristina Vicentin Rae	Havelock Hotel	16 May 2026
CERT/046/2022	Alexandra Ava Baker	Wairau Valley Tavern	30 June 2026
CERT/057/2019	Elizabeth Anne Scott	Countdown Blenheim	17 July 2026
CERT/064/2020	Sandra Ruth Anderson	Pak n Save Blenheim	4 July 2026
CERT/067/2022	Isabella Kate Lissaman	Yealands Estate Wines	13 July 2026
CERT/070/2022	Kerry Ann Neal	Redwood Tavern	13 July 2026
CERT/074/2019	Zahir Khan	Scenic Hotel Marlborough	5 July 2026
CERT/076/2019	Sarah Rae Vanstone	Scenic Hotel Marlborough	11 July 2026
CERT/078/2019	Tracy Ann Jones	Pak n Save Blenheim	11 July 2026
CERT/141/2016	Lorraine Beryl Atherton	New World Blenheim	11 July 2026
CERT/141/2014	Howard Wilton Simmonds	Gibson Bridge	5 July 2026
CERT/176/2014	Peter Robert Clark	Marlborough Wine Group	20 July 2026

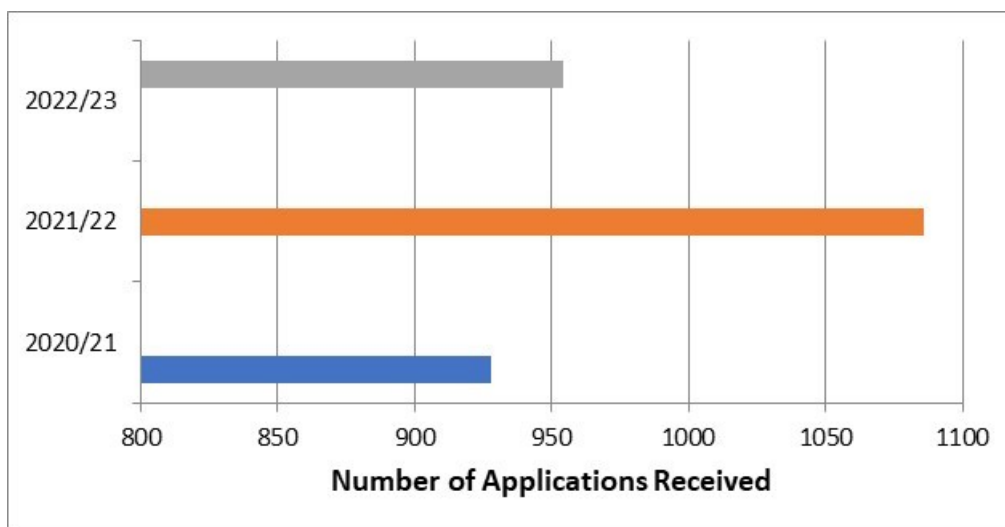
Resource Consents Section

(Report prepared by Anna Davidson)

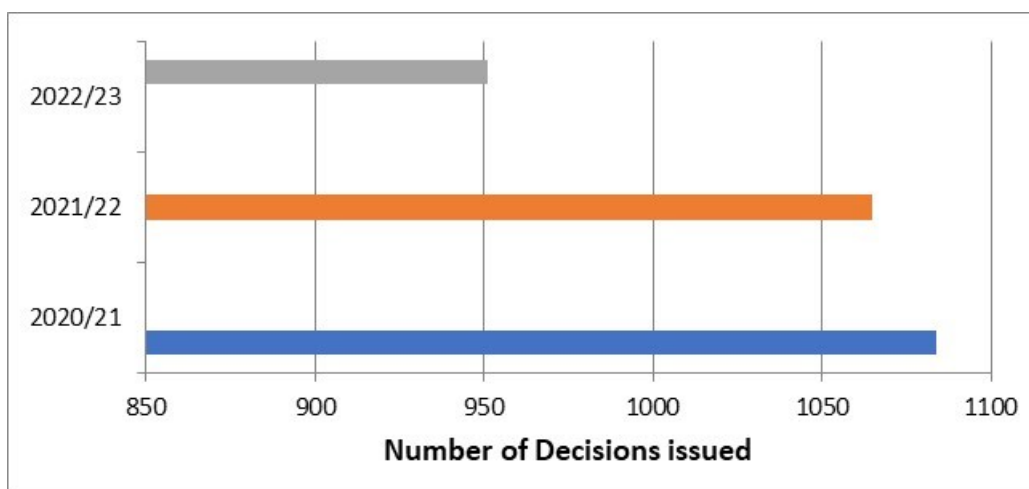
R450-004-12

Resource Consents Team Financial Year Update 2022/2023

The 2022/2023 financial year was relatively steady for the Resource Consent Team. Overall, the number of applications received is slightly less than the previous financial year and slightly more than the year before. During the 2022/2023 financial year Council has received **954** applications. Of that total, **854** were new applications for resource consent. Council also received **89** applications for variations to resource consent conditions under section 127, **9** extensions to lapse date under section 125 and **2** objections to conditions/charges under section 357. In the same period in 2021/2022 Council received **1086** applications and in 2020/2021 Council received **928** applications.



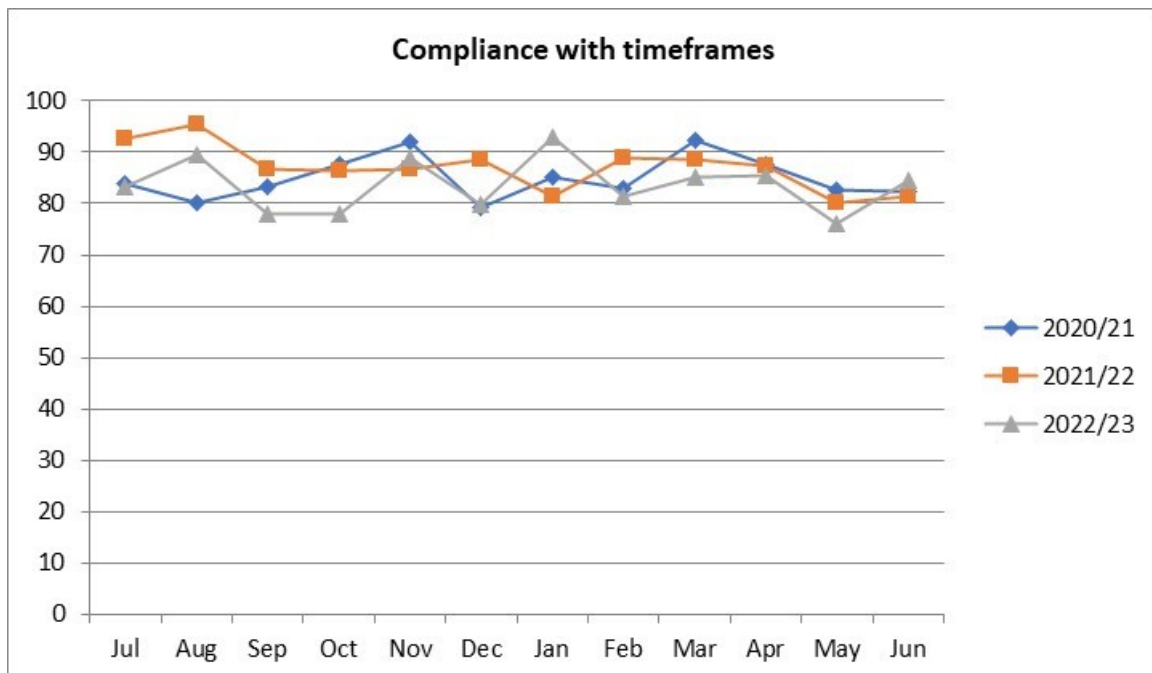
The number of applications issued in the 2022/23 year was less than in the previous two financial years. Council issued **951** decisions in 2022/23. Of that total, **854** were for new applications for resource consent. Council also issued **84** section 127 decisions (variations to resource consent conditions), **11** section 125 (extension to lapse date) and **2** objections to conditions/charges under section 357. In the same period in 2021/22 Council issued **1,065** decisions and in 2020/21 Council issued **1084** decisions.



Over the 2022/23 financial year **20 (2.1%)** applications were rejected under section 88. This compares to **16 (1.5%)** rejected in 2021/22 and **12 (1.2%)** rejected in 2020/21. When the new provisions were introduced by the Resource Management Amendment Act 2013 in 2015 up to 15% of applications were being rejected due to being incomplete. The relatively low number of rejected applications over the last three financial years indicates better educated and aware applicants of the information they are required to provide with an

application for resource consent. This can be partially attributed to the Duty Planner service and the Resource Consent Team communication strategy including the quarterly newsletter.

Compliance with statutory timeframes is similar to the previous two financial years with **83.56%** of applications being processed within statutory timeframes. In 2021/22 and 2020/21 **86.98%** and **84.90%** of applications were processed within statutory timeframes respectively.



There are a few reasons why timeframe compliance has not been achieved including:

- The complexity of the applications received.
- Staff resources – loss through retirement and resignation of experienced planners with relevant skill sets.
- Challenges with new systems and processes.
- Operating under three Plans.

Several measures have been instituted to address timeframe compliance including:

- The establishment of three Lead Senior Environmental Planners to manage and process major regional and subdivision applications and to mentor and train developing staff.
- The establishment of a Technical Lead Land Use Planner role to manage and process the major land use applications and to mentor and train a developing Land Use planner.
- The availability of senior staff to allocate and monitor workload.
- The achievement of appropriate staffing levels.
- The creation of a pathway with full Council support for staff to develop and achieve recognition as a Senior Environmental Planner.
- Improvements and fixes to ReCApp to extend its capabilities beyond the current minimum viable product.
- A business continuity plan including fully functional electronic devices for all staff enabling business as usual if required to work remotely.

Resource Consent Approvals Under Delegated Authority

The following applications have been approved under delegated authority pursuant to Council's Instrument of Delegation pursuant to the Resource Management Act 1991, and the relevant clause thereof as identified below.

	Delegation	Consent Holder	Consent No.	Consent(s) Issued	Proposal	Site Location	Date Issued
1.	104B	Clifford Land Development Limited	U230361	Land Use (Activity) (x4)	<p>Install and operate a FrostBoss C49 frost fan with a John Deere engine (Fan 1) on Crown Land Block I (under action) Avon Survey District.</p> <p>Install and operate a FrostBoss C49 frost fan with a John Deere engine (Fan 2) on Crown Land Block I (under action) Avon Survey District.</p> <p>Install and operate a FrostBoss C49 frost fan with a John Deere engine (Fan 3) on Crown Land Block I (under action) Avon Survey District.</p> <p>Install and operate a FrostBoss C49 frost fan with a John Deere engine (Fan 4) on Crown Land Block I (under action) Avon Survey District.</p>	2280 State Highway 63, Wairau Valley	26/06/2023

	Delegation	Consent Holder	Consent No.	Consent(s) Issued	Proposal	Site Location	Date Issued
2.	104B	Foreshore Investments Limited	U230324	Land Use (Land Disturbance); Land Use (Activity); Subdivision (Allotment Creation)	Undertake earthworks associated with installation of services and access associated with residential development on Lot 278 DP 1119. Construct three dwellings on Lot 278 DP 1119, and to authorise recession plane encroachments on the internal boundaries of the allotments being created under the subdivision consent. Subdivide the three (substantially completed) townhouses on Lot 278 DP 1119 into separate allotments.	14 Keiss Street, Blenheim	26/06/2023

	Delegation	Consent Holder	Consent No.	Consent(s) Issued	Proposal	Site Location	Date Issued
3.	104B	Longfield Farm Limited	U230316	Land Use (Dam); Water Permit (Dam Water); Water Permit (Divert Water)	Construct a dam with a maximum wall height of 4.2 metres on Lot 1 DP 325502. Dam up to 85,000 cubic metres of water on Lot 1 DP 325502. Divert sub-surface water under a storage reservoir located on Lot 1 DP 325502.	4437 State Highway 63	27/06/2023
4.	104B	T G McLeod	U200055	Land Use (Activity) (x3); Discharge Permit (To Land)	Operate a depot for a diving business which includes storage and maintenance of marine equipment and an office on Lot 1 DP 393520. Authorise the use of a second dwelling house and cottage on Lot 1 DP 393520. Authorise building within the site boundary setback (second dwelling house and cottage) on Lot 1 DP 393520. Discharge treated domestic wastewater to land on Lot 1 DP 393520.	23 Bay End, Rarangi	27/06/2023

	Delegation	Consent Holder	Consent No.	Consent(s) Issued	Proposal	Site Location	Date Issued
5.	104B	S M Walker	U230351	Discharge Permit (To Land)	Discharge secondary treated domestic wastewater to land on Lot 1 DP 8235 and Lot 1 DP 12191.	4143 Kenepuru Road, Kenepuru Head	28/06/2023
6.	104B	Christchurch Methodist Central Mission	U220997	Land Use (Activity) (x2); Land Use (Land Disturbance)	Demolish/removal of buildings and construct six (6) residential dwellinghouses/units on Lot 1 DP 2402. Construct a new vehicle crossing to provide access to Lot 1 DP 2402 within 7.5 metres of an existing vehicle crossing on the same side of the street. Undertake earthworks (excavation and filling) where the volume exceeds 50 cubic metres and excavation that may intercept groundwater on Lot 1 DP 2402.	27 Rogers Street, Blenheim	28/06/2023
7.	104B	Marlborough District Council	U220229	Subdivision	Certificate of compliance to subdivide land held in RT 574702 (Lot 1 DP 4778 and Sec 1 SO 443127) to create Lot 2 for land associated with utilities.	6 Symons Street, Blenheim	28/06/2023
8.	104B	A and M Curteis	U170869	Coastal Permit	New coastal permit for a new mooring M3700 in Double Bay.	Double Bay, Outer Mahau Sound	29/06/2023
9.	104B	Renewable Resources New Zealand Limited	U230384	Land Use (River Surface or Bed Activity)	Install a temporary drift deck bridge over the Taylor River to facilitate harvesting of plantation forest.	Taylor Pass, Blenheim	29/06/2023
10.	104B	B Jarvis and K K Gould	U120081	Coastal Permit	New coastal permit (replacing U041692) for swing mooring 1402 in Wairangi Bay for use by a vessel up to 12 metres in length, to facilitate access to Lot 2 DP 19242.	Wairangi Bay, Squally Cove, Croisilles Harbour	29/06/2023

	Delegation	Consent Holder	Consent No.	Consent(s) Issued	Proposal	Site Location	Date Issued
11.	104B	Medway Hills Limited	U230332	<p>Land Use (River Surface or Bed Activities); (x3)</p> <p>Land Use (Gravel Removal);</p> <p>Water Permit (Divert Water);</p> <p>Water Permit (Use Water)</p>	<p>Undertake works within the Awatere and Medway riverbeds to construct gravel bunds to temporarily divert water to construct an infiltration gallery and irrigation mainline and to maintain the infiltration gallery adjacent to Part Lot 1 DP 632.</p> <p>Occupy the bed of the Awatere and Medway confluence adjacent to Part Lot 1 DP 632 with an infiltration gallery.</p> <p>Construct and use a bore within the riverbed of the Awatere and Medway confluence at/about grid coordinates (NZTM) 1671993E and 5376062N for irrigation purposes.</p> <p>Extract, screen and process up to 300 cubic metres of Awatere and Medway River gravels associated with the construction and maintenance of an infiltration gallery in the bed of the Awatere and Medway Rivers adjacent to Part Lot 1 DP 632.</p> <p>Temporarily divert the Medway and Awatere Rivers to provide for the construction, installation and maintenance of an infiltration gallery adjacent to Part Lot 1 DP 632.</p> <p>Use water for the irrigation of up to 20 hectares of vines and 70 hectares of pasture and crops on Lot 2 DP 513489, Pt Lot 1 DP 632 and Pt Lot 2 DP 2654.</p>	Medway River at the confluence with the Awatere River	29/06/2023

	Delegation	Consent Holder	Consent No.	Consent(s) Issued	Proposal	Site Location	Date Issued
12.	104B	Wendy Palmer Vineyards Limited	U220901	Water Permit (Take Water); Water Permit (Use Water) (x2)	Take Wairau Aquifer FMU water from well P28w/0341 located on Lot 2 DP 503840 up to a maximum rate of 7,650 cubic metres per year. Use water for the irrigation of up to 3.85 hectares of vineyard located on Lot 1 DP 503840. Use water for ancillary purposes outside of the irrigation season on Lot 1 DP 503840.	75 Mills and Ford Road East, Grovetown	29/06/2023
13.	104B	Port Marlborough New Zealand Limited	U230319	Coastal Permit and Land Use Consent	Establish a 22 metre by 4 metre floating jetty ('Jetty C') and associated linkspan in Picton Harbour.	Picton Harbour, Queen Charlotte Sound / Tōtaranui	29/06/2023
14.	104A	Clifford Road Limited	U230402	Land Use (Activity) (x4)	Install and operate a FrostBoss C49 frost fan with a John Deere engine (Fan 1) on Lot 1 DP 8992. Install and operate a FrostBoss C49 frost fan with a John Deere engine (Fan 2) on Lot 1 DP 8992. Install and operate a FrostBoss C49 frost fan with a John Deere engine (Fan 3) on Lot 1 DP 8992. Install and operate a FrostBoss C49 frost fan with a John Deere engine (Fan 4) on Lot 1 DP 8992.	3324 State Highway 63, Wairau Valley	30/06/2023

	Delegation	Consent Holder	Consent No.	Consent(s) Issued	Proposal	Site Location	Date Issued
15.	104B	P A and R J Hyatt	U230385	Land Use Activity	Change condition 1 of Consent Notice 9491725.3 as it relates to Lot 2 DP 464982 to allow the construction of a 40 square metre shed outside of the nominated building area on Lot 2 DP 464982.	Onetea Bay, Croisilles	30/06/2023
16.	104B	P A and R J Hyatt	U230330	Land Use Activity	Establish a 40 square metre shed in an Outstanding Natural Feature and Outstanding Natural Landscape Overlay on Lot 2 DP 464982.	Onetea Bay, Croisilles	30/06/2023
17.	104B	Cove Property Limited	U230373	Coastal Permit	Coastal permit to install a new fixed timber jetty with linkspan and floating pontoon and to remove part of the existing jetty (U130557.01) fronting Lot 15 DP 1650 in Double Cove.	Double Cove, Queen Charlotte Sound / Tōtaranui	30/06/2023
18.	104B	L M Edwards and M G Wratt	U230363	Discharge Permit (to Land)	Discharge secondary treated domestic wastewater to land via an existing onsite wastewater system on Lot 7 DP 341938.	236 Mahau Road, Mahau Sound	30/06/2023

	Delegation	Consent Holder	Consent No.	Consent(s) Issued	Proposal	Site Location	Date Issued
19.	104B	Talley's Limited	U230051	Land Use (Dam); Land Use (Land Disturbance); Water Permit (Dam Water); Water Permit (Divert Water) (x2)	Construct an off-stream storage reservoir of up to 6.4 metres in height on Lot 2 DP 401760 and Part Section 6 Block XXII Taylor Pass SD. Undertake filling in excess of 1000 cubic metres on Lot 2 DP 401760 and Part Section 6 Block XXII Taylor Pass SD. Dam up to 170,000 cubic metres of water within a storage reservoir on Lot 2 DP 401760 and Part Section 6 Block XXII Taylor Pass SD. Divert stormwater runoff from the catchment associated with a storage reservoir on Lot 2 DP 401760 and Part Section 6 Block XXII Taylor Pass SD. Divert sub-surface water beneath a storage reservoir and stormwater in a diversion drain located on Lot 2 DP 401760 and Part Section 6 Block XXII Taylor Pass SD.	714 Marama Road, Awatere Valley	30/06/2023
20.	104B	St Andrews Property Group Limited	U161260	Land Use Activity	Change conditions 1, 2, 7 and 8 of consent U161260.01 to enable expansion of the accommodation facilities at the St Andrews Recognised Seasonal Employer facility.	3023 State Highway 1, Riverlands	30/06/2023
21.	87BA	M A and T M Leeden	U230415	Land Use Activity	Construct a 9 metre by 6.6 metre garage which will encroach the eastern boundary recession plane	13D Main Road, Havelock	03/07/2023

	Delegation	Consent Holder	Consent No.	Consent(s) Issued	Proposal	Site Location	Date Issued
	104B	Medway Hills Limited	U230403	Land Use Activity (x4)	Install and operate a FrostBoss C49 frost fan with a John Deere Engine (Fan 1). Install and operate a FrostBoss C59 frost fan with a John Deere Engine (Fan 2). Install and operate a FrostBoss C59 frost fan with a John Deere Engine (Fan 3). Install and operate a FrostBoss C49 frost fan with a John Deere Engine (Fan 4).	30 Welds Hill Road, Awatere Valley	03/07/2023
	104B	Indevin Estates Limited	U230320.01	Subdivision (Allotment Creation)	Subdivide Part Lot 1 DP 3105 and Lot 2 DP 495711 into two allotments each.	1025 State Highway 63, Waihopai and 1566 Waihopai Valley Road, Waihopai	03/07/2023
	104B	TC Developments Limited	U220160	Subdivision (Allotment Creation); Land Use (Activity)	To subdivide Lot 16 DP 3141 into two allotments. To build to within 2 metres of the landward toe of the Council stopbank, and to excavate to a maximum depth of 600mm within 8 metres of the landward toe of the Council stopbank.	14 Leefield Street, Blenheim	03/07/2023
	104A	Galilee Vineyards Limited	U230404	Land Use (Activity) (x4)	Install and operate a FrostBoss C49 frost fan with a John Deere engine (Fan 1). Install and operate a FrostBoss C49 frost fan with a John Deere engine (Fan 2). Install and operate a FrostBoss C49 frost fan with a John Deere engine (Fan 3). Install and operate a FrostBoss C49 frost fan with a John Deere engine (Fan 4).	34 Eckfords Road, Dillons Point	04/07/2023

	Delegation	Consent Holder	Consent No.	Consent(s) Issued	Proposal	Site Location	Date Issued
22.	127	Summerset Villages (Blenheim) Limited	U201097.127.01	Land Use (Activity); Land Use Land Disturbance (x2); Discharge permit (To Land)	Application to vary conditions of resource consents U201097.1, U201097.3 and U201097.5 held for the construction and operation of a comprehensive retirement village.	183 Old Renwick Road, Springlands, Blenheim	04/07/2023
23.	104B	J R Callaghan, J L and S J Clarke, L A Deed, A J Howe and M Bool	U230249	Water Permit (Take Water); Water Permit (Use Water)	Take water from Thompsons Stream up to a maximum rate of 13 cubic meters per day via intake. Use water for domestic purposes	55 Tirimoana Terrace, Anakiwa	04/07/2023
24.	104B	John Chirnside Hyndman	U230177	Land Use (Activity); Land Use (Land Disturbance)	Construct a dwelling that does not comply with height, outdoor amenity and recession plane standards. Excavate approximately 920 cubic metres of soil to form the building platform.	25B Seaview Crescent, Picton	04/07/2023
25.	136	Medway Hills Limited	U170513.136.01	Water Permit (Take Water) (x2)	Transfer the abstraction point for U170513 to include a second intake being an infiltration gallery in the bed of the Medway and Awatere Rivers.	1109 Medway Road, Awatere Valley	05/07/2023
26.	104B	Negociants New Zealand Limited	U230410	Water Permit (Take Water); Water Permit (Use Water) (x2)	Abstract Wairau Aquifer FMU water up to a maximum rate of 41,680 cubic metres annually from well. Use water for the irrigation of up to 28.47 hectares of vineyard. Use water for ancillary purposes.	Rapaura Road, Renwick	06/07/2023

	Delegation	Consent Holder	Consent No.	Consent(s) Issued	Proposal	Site Location	Date Issued
27.	104B	Scott Vineyard Limited	U230381	Land Use (River Surface or Bed Activity)	Undertake works in the bed of the lower Marchburn Stream, to reshape the channel, remove, exotic trees and improve the channel capacity.	1746 State Highway 63, Wairau Valley	06/07/2023
28.	104B	S T, I N, J M and J V Fyfe	U230364	Subdivision (Allotment Creation); Land Use (Activity)	Subdivide lots into three allotments. Authorise a recession plane encroachment arising between the existing dwelling and the new access leg boundary.	53 George Street and 12 Monro Street, Blenheim	06/07/2023
29.	104B	Owen Orchard Investments Limited	U230068	Subdivision (Allotment Creation)	Subdivide into two allotments.	1676 Queen Charlotte Drive, Linkwater	06/07/2023
30.	104B	K and G Coles Contracting Limited	U230416	Land Use (Activity) (x2)	Install and operate an Orchard Rite 2430 frost fan (Fan 1) with a CAT engine on. Install and operate an Orchard Rite 2430 frost fan (Fan 2) with a CAT engine on.	116 and 158 Cravens Road, Spring Creek	06/07/2023
31.	104B	Angora Dale Trustees Limited	U221001	Land Use (Dam); Water Permit (Dam Water); Water Permit (Divert Water)	Construct a storage reservoir of up to 5.5 metres in height. Dam up to 80,000 cubic metres of water within a storage reservoir. Divert sub-surface water beneath a storage reservoir.	1540 Waihopai Valley Road, Waihopai Valley	06/07/2023
32.	176(2)(c)	Ministry of Education	U230437	Land Use (Activity)	An upgrade, partial rationalisation and reconfiguration of a junior classroom and removal of Kiva Room. The site on which the work is proposed is Designated Land for Education Purposes.	30 Morse Street, Wairau Valley	06/07/2023

	Delegation	Consent Holder	Consent No.	Consent(s) Issued	Proposal	Site Location	Date Issued
33.	104B	G H and L J Ballagh	U230405	Land Use (Activity); Land Use (Land Disturbance)	Establish a dwelling that does not comply with the standards for outdoor amenity. Undertake excavation and filling in excess of 50 cubic metres on a slope greater than 10 degrees.	26A Russell Street, Picton	07/07/2023
34.	104B	Blenheim School	U230394	Land Use (Activity)	Undertake more than minor pruning of Notable Tree	11 Seymour Street, Blenheim	07/07/2023
35.	104B	Downer New Zealand Limited	U230329	Coastal Permit (Structure) (x2); Land Use (Land Disturbance)	Construct a staging jetty in Westshore. Realign the Westshore beach boat ramp. Undertake earthworks.	Westshore, Picton/Waitohi	07/07/2023
36.	104B	Kainga Ora Homes and Communities	U230023	Land Use (Activity); Land Use (Land Disturbance) (x2); Subdivision (Allotment Creation)	Construct four dwellings and modify an existing vehicle crossing. Undertake land disturbance associated with the residential development. Undertake soil disturbance on a H.A.I.L site that does not comply with Regulation 8(3)(c) & (d) of the NES for Assessing and Managing Contaminants in Soil to Protect Human Health Regulation 2011. To subdivide the four dwellings into separate allotments.	12 Budge Street, Blenheim	07/07/2023

	Delegation	Consent Holder	Consent No.	Consent(s) Issued	Proposal	Site Location	Date Issued
37.	104B	Negociants New Zealand Limited	U230411	Water Permit (Take Water) (x2); Water Permit (Use Water)	Abstract Wairau Aquifer FMU water up to a maximum rate of 15,666 cubic metres annually from well P28w/1176 located on Part Lot 1 Deeds Plan 107. Use water for ancillary purposes on Part Lot 1 Deeds Plan 107 and Lot 1 DP 5732. Use water for the irrigation of up to 7.4 hectares of vineyard on Part Lot 1 Deeds Plan 107 and Lot 1 DP 5732.	11 Blicks Road, Renwick	10/07/2023
38.	104B	J S K and M A Finderup	U230354	Land Use Activity	Change condition 14 of consent notice 7481512.1 as it relates to Lot 59 DP 388753 to increase the building height restriction to 5.4m.	Orapito Road, Kaiuma Bay	10/07/2023

	Delegation	Consent Holder	Consent No.	Consent(s) Issued	Proposal	Site Location	Date Issued
39.	104B	Small Holdings Limited	U220582	Land Use (River Surface or Bed Activity); Land Use (River Surface or Bed Activity); Water Permit (Divert Water)	Undertake works in the Ronga River to temporarily divert water, construct and maintain flood protection works, remove fairway vegetation, construct two pipe crossings above the Ronga River and remove accumulated aggregates and vegetation from a side tributary of the Ronga River located adjacent to Section 2 Block IV Tennyson SD and lots 3 and 5 DP 414311. To occupy the space above the bed of the Ronga River with pipe crossings at/about grid coordinates 1651101E 5443059N and 1651140E 5443850N. To temporarily divert the Ronga River while undertaking and maintaining flood protection works adjacent to Section 2 Block IV Tennyson SD and lots 3 and 5 DP 414311.	943 Ronga Road, Rai Valley	10/07/2023
40.	104B	Ministry of Justice	U230443	Land Use Activity	For commercial alterations and additions (reception counter security upgrade and interior workplace refurbishment). The site on which the work is proposed is Designated Land for Courthouse in the Proposed Marlborough Environment Plan.	58 Alfred Street, Blenheim	10/07/2023
41.	104B	P G and B A Bown	U230442	Land Use Activity	To construct a shed 1 metre from southern boundary on Lot 1 DP 3054 BLKS XIV XV Cloudy Bay SD.	22 Burnside Avenue, Springlands, Blenheim	11/07/2023

	Delegation	Consent Holder	Consent No.	Consent(s) Issued	Proposal	Site Location	Date Issued
42.	104B	J C Leggett, and J A and R J Kett	U230432	Land Use Activity	A deemed permitted boundary activity for the extension of an existing deck to intrude into the recession plane along the northern boundary and the northern boundary set back on Lot 679 Deposited Plan 336.	50 York Street, Picton	11/07/2023
43.	104B	M G J Route and P F Sturt	U230346	Land Use Activity	To vary condition 2 and cancel condition 7 of consent notice 9908732.3 as they relate to Lot 11 DP 439680.	49 Korimako Rise, Havelock	11/07/2023
44.	104B	Talleys Limited	U230044	Land Use Activity	To establish and operate a 5.25-hectare solar farm on Lot 1 DP 4415.	742 Old Renwick Road, Blenheim	11/07/2023
45.	104B	Spray River Flats Limited	U230414	Land Use (Land Disturbance)	To disturb soil on a HAIL site that does not comply with Regulation 8(3) (c) and (d) of the National Environmental Standard for Assessing and Managing Contaminants in Soil to Protect Human Health Regulations 2011 on the location of a previous fire on part of Lot 1 DP 495563.	3092 Waihopai Valley Road, Waihopai Valley	12/07/2023
46.	104B	J M Rogers and J A Diamond- Cowlshaw	U230396	Land Use (Land Disturbance)	To disturb soil on a HAIL site that does not meet Regulation 8(3)(c) and (d) and Regulation 9(1)(b) of the National Environmental Standard for Assessing and Managing Contaminants in Soil to Protect Human Health on Lot 1 DP 3115.	44 Wither Road, Blenheim	12/07/2023
47.	104B	Fire and Emergency New Zealand	U230370	Land Use (Activity)	To establish and operate a 320 square metre Fire Station, with associated signage, fencing, a vehicle crossing, and communication structure on Lot 1 DP 5124.	54 Duncan Street, Ward	12/07/2023

	Delegation	Consent Holder	Consent No.	Consent(s) Issued	Proposal	Site Location	Date Issued
48.	104B	Gold Field Farm Limited	U230365	Subdivision (Allotment Creation)	Subdivide Lot 2 DP 471230 into two allotments.	471 Tetley Brook Road, Seddon	12/07/2023
49.	104B	A V and J R W Burkhart	U230439	Land Use (Land Disturbance)	To disturb soil on a HAIL site that does not comply with Regulation 8 (c) and (d) of the National Environmental Standards for Assessing and Managing Contaminants in Soils to Protect Human Health Regulations 2011 on Lot 1 DP 494550.	15 Hammerichs Road, Rapaura	13/07/2023

	Delegation	Consent Holder	Consent No.	Consent(s) Issued	Proposal	Site Location	Date Issued
50.	104B	Kaikaiāwaro Charitable Trust Board	U230264	Land Use (Activity); Land Use (Land Disturbance); Land Use (River Surface or Bed Activity);	<p>To establish and operate an intensive farming operation (plant nursery facility) and associated administration offices, construct a retaining wall within 8 metres of and undertake vegetation clearance within, or within 10 m of Significant Wetland 373 and operate a vehicle entrance with a non-complying sight distance to the east, on Section 1 SO 427361.</p> <p>To operate wheeled or track machinery within 8 metres and undertake earthworks within, or within a 10 of Significant Wetland 373, undertake filling in excess of 1000 cubic metres within 24 months on Section 1 SO 427361 and undertake earthworks within 8 m of Titiraukawa stream for installation of a screened surface water intake on Lot 1 DP 8091.</p> <p>To occupy the bed and the space above the bed of Titiraukawa Stream with a screened water intake and telemetered water level recorder and staff gauge on Lot 1 DP 8091.</p>	28 Maungatapu Road, Rai Valley	13/07/2023

	Delegation	Consent Holder	Consent No.	Consent(s) Issued	Proposal	Site Location	Date Issued
51.			U230264 Continued	Water Permit (Take Water); Water Permit (Use Water) (x2)	Take A Class Rai FMU water up to a maximum rate of 310 cubic meters per day from well 20163 on Section1 SO 427361 and from Titiraukawa Stream at approximately Grid Ref: 1647572E 5428412N on Lot 1 DP 8091. Use water for intensive farming (plant nursery) on Section 1 SO 427361. Use water for administration offices and staff facilities associated with a plant nursery on Section 1 SO 427361.		
52.	104B	APH Design and Build Limited	U230223	Land Use (Activity)	Establish a show home with a professional office and associated signage related to house designs and sales on Lot 56 DP 556133.	25 Wai Iti Avenue, Redwoodtown, Blenheim	13/07/2023
53.	104B	Fonterra Limited	U210554	Discharge Permit (To Land)	Discharge washdown water and storm-water from Lot 1 DP 5921, Lot 1 DP 4775 & Section 122 Waitohi Valley DIST to land on Lot 1 DP 7638, Part DP 126, Lot 4 DP 2246, Part Lot 2 DP 692, Lot 2 DP 5891, Lots 1 and 3 DP 2943, Sec 23 and Sec 24 Blk VII Cloudy Bay SD, Lot 10 Deeds 14 and Lot 11 Deeds 14, and Part Lot 12 Deeds 14 and Sec 24 Blk VIII Cloudy Bay SD.	Blind Creek Road, Tuamarina	13/07/2023
54.	104B	P M Huntley and C I Hill	U230454	Subdivision	Cancel Consent Notice 10506727.2 in full as it pertains to Lot 2 DP 493924 (RT 721448).	57 Parker Street, Mayfield, Blenheim	17/07/2023

	Delegation	Consent Holder	Consent No.	Consent(s) Issued	Proposal	Site Location	Date Issued
55.	104B	Sanford Limited	U230435	Coastal Permit – Structure	Place a temporary structure for scientific monitoring purposes or temporary equipment for scientific monitoring purposes at Jetty 18W, Berth 1A, Waikawa Marina.	Jetty 18W, Berth 1A Marina Zone	17/07/2023
56.	104B	R A Blackburn	U230389	Land Use (Activity)	Construct a second dwelling house including reduced outdoor amenity (diameter circle) on Lot 175 DP 381952.	19 Forest Park Drive, Blenheim	17/07/2023
57.	104B	Broadgreen Limited	U220442	Subdivision (Allotment Creation); Land Use (Land Disturbance); Land Use (Activity)	Subdivide Lot 6 DP 4732 into two allotments. Undertake earthworks of approximately 210m ³ fill and 175m ³ excavation associated with construction of the subdivision, including construction of the right of way and associated retaining walls, trenching for services, localised filling on allotments and berms. To encroach on the recession planes with respect to the north-western and proposed internal boundaries for the proposed dwellings on Lots 1 and 2 (of the proposed subdivision hereon). To exceed the maximum height of a structure (7.5m) on the Proposed Lot 1 by 2.433m.	7 Suffolk Street, Picton	17/07/2023
58.	104B	Northridge Estate Limited	U230450	Land Use (Activity)	Install and operate a FrostBoss C49 frost fan with a John Deere engine on Lot 1 DP 414781.	213A Ben Morven Road, Fairhall	18/07/2023
59.	104B	Govanlea Holding Limited	U230449	Land Use (Activity)	Install and operate a FrostBoss C49 frost fan with a John Deere engine on Lot 1 DP 414781.	213 Ben Morven Road, Fairhall	18/07/2023

	Delegation	Consent Holder	Consent No.	Consent(s) Issued	Proposal	Site Location	Date Issued
60.	104B	Aotearoa Towers GP Limited – trading as Fortysouth	U230375	Land Use (Activity)	Upgrade an existing mobile phone facility involving the installation of a new 1200 mm microwave dish on an existing 20 metre tower, 12 metres above ground level on Section 17 Blk VI French Pass Survey District.	Turners Peak at Bulwer Farm	18/07/2023
61.	104B	J P Taylor	U230374	Coastal Permit and Land Use Consent	New coastal permit and land use consent for the continuation of an existing barge loading ramp fronting Lot 2 DP 7627 in Yncyca Bay, Pelorus Sound/Te Hoiere.	Yncyca Bay, Pelorus Sound/Te Hoiere	18/07/2023
62.	104B	P M and P J Heagney	U230315	Coastal Permit	Coastal permit to construct a new boatshed, slipway and floating jetty associated with Lot 2 DP 10043 in Opuia Bay, Tory Channel/Kura te Au.	Opuia Bay, Tory Channel/Kura-te-Au	18/07/2023
63.	104B	G Clements	U230430	Discharge Permit (to Land)	Discharge treated domestic wastewater to land from an existing secondary wastewater system on Lot 2 DP 391338.	7174 Kenepuru Road, Marlborough Sounds /	19/07/2023
64.	104B	Ministry of Education	U220774	Land Use (Land Disturbance)	Undertake earthworks (excavation and filling) in excess of 50 cubic metres (to establish new structures and refurbish existing structures) on Section 1 SO 4595.	Queen Charlotte College, 173 Waikawa Road, Picton	19/07/2023
65.	104B	Whitehaven Wine Company Limited	U230224	Land Use Activity	Create a right of way for farming purposes only over Lot 2 DP 580008 in favour of Lot 1 DP 580008.	3459 State Highway 63, Wairau Valley	19/07/2023
66.	104B	D C Grant and J A Gardiner	U210472	Subdivision	Change condition 1 of the subdivision consent to allow for a smaller building platform shape on Lot 1, and to allow for a sewer easement to be created over Lot 1 appurtenant to Lot 2.	81 Redwood Street, Redwoodtown	20/07/2023

	Delegation	Consent Holder	Consent No.	Consent(s) Issued	Proposal	Site Location	Date Issued
67.	104B	C D Ellis and R S Boettcher	U230452	Water Permit (Take Water); Water Permit (Use Water) (x2);	To abstract Wairau Aquifer FMU water up to a maximum of 1244 cubic metres per year from well P28w/4733 on Lot 4 DP 7614. Use water for the irrigation of up to 0.85 hectares of vineyard on Lot 4 DP 7614. Use water for ancillary viticulture purposes outside of the irrigation season on Lot 4 DP 7614.	30 Rapaura Road, Rapaura	20/07/2023
68.	104B	R Enoch and A J Orchard	U230444	Discharge Permit (To Land)	Discharge primary treated domestic wastewater to land on Section 5 SQ 28 North Boulder Bank DIST.	926 Wairau Bar Road, Spring Creek	20/07/2023
69.	104B	Talley's Group Limited	U230421	Land Use (Land Disturbance)	To disturb soil on a HAIL site that does not comply with Regulation 8(3)(c) and (d) of the National Environmental Standards for Assessing and Managing Contaminants in Soil to Protect Human Health Regulations 2011 on Lot 1 DP 4415.	742 Old Renwick Road, Renwick	20/07/2023
70.	104B	C and E M D Harmer	U220785	Land Use (River Surface or Bed Activity)	Undertake works within Ohinemahuta River to undertake and maintain bank protection works and minor sediment/gravel removal for the purpose of maintaining flow capacity and minimising potential flooding on and adjacent to Lots 8-12 DP 8959.	898 Onamalutu Road, RD 5, Blenheim 7275	20/07/2023
71.	104B	N B and R J Millard	U230401	Discharge Permit (to Land)	Discharge secondary treated domestic wastewater to land via an existing wastewater system located on Lot 1 DP 403279.	1731 Queen Charlotte Drive	21/07/2023

	Delegation	Consent Holder	Consent No.	Consent(s) Issued	Proposal	Site Location	Date Issued
72.	104B	Auto Self-Serve Blenheim Limited	U230009	Land Use (Bore)	Install a bore located on Lot 1 DP 11967 at/about grid coordinates 1680141E 5404250N to investigate groundwater yields and for commercial purposes.	14 Horton Street, Lot 1 DP 11967	21/07/2023
73.	104B	Kyle Dairy Limited	U230242	Land Use (Gravel Removal) (x1); Land Use (Activity)	To extract up to 13,000 cubic metres of gravel and sand from the Ohinemahuta River, with up to 3,000 cubic metres of gravel and sand per year, between four different sites: Site 1 (gravel) – Located on Lot 1 DP 8081 at N5407122 E1662440 NZTM; Site 2 (gravel) – Located on Pt SEC 8 Blk 1 Kaituna DIST at N5407284 E1662876 NZTM; Site 3 (gravel) – Located on Pt SEC 8 Blk 1 Kaituna DIST at N5407405 E1663150 NZTM; and Site 4 (gravel and sand) – Located on Pt SEC 8 Blk 1 Kaituna DIST at N5407457 E1663299 NZTM. Establish and operate a gravel stockpile and processing site on Pt SEC 55 Langley Dale Run North Bank of Wairau DIST (at or about E1662434 N5407076).	Northbank Rd, Onamalutu, Wairau Valley	24/07/2023
74.	104B	Monaghan Limited	U230453	Discharge Permit (To Land)	To discharge secondary treated domestic wastewater to land on Lot 5 DP 435589.	556 Awatere Valley Road, Marlborough	25/07/2023

	Delegation	Consent Holder	Consent No.	Consent(s) Issued	Proposal	Site Location	Date Issued
75.	104B	Marlborough Airport Limited	U211065	Land Use (Activity); Land Use (Land Disturbance) (x2); Discharge Permit (To Land)	Construct and operate a new car park; including construction of a soil bund along the northern boundary of Lot 2 DP 458539. Undertake earthworks (excavation and fill) of approximately 5,000 – 10,000 cubic metres of material to facilitate the construction of the new car park and associated stormwater systems on Lot 2 DP 458539. Undertake earthworks on a HAIL site that does not comply with Reg (8)(3)(c), (d) and (f) of the National Environmental Standard for Assessing and Managing Contaminants in Soil to Protect Human Health on Lot 2 DP 458539. Discharge stormwater to land from the new car park (via a stormwater treatment system and soakage basins) on Lot 2 DP 458539.	Tancred Crescent, Base Woodbourne, Middle Renwick Road (State Highway 6), Woodbourne	25/07/2023
76.	104B	M G Gerard	U230418	Subdivision (Boundary Adjustment)	Subdivide Pt Sec 3 Blk V Orieri SD, Sec 2 of 71, Sec 1 of 75 and Lot 3 DP 341343 (RT 170077) as a boundary adjustment with Sec 4 Blk I Orieri SD (RT MB1B/413).	1334 Elie Bay Road, Marlborough Sounds	25/07/2023
77.	104B	Scott Family Winemakers Limited	U230390	Water Permit (Take Water); Water Permit (Use Water)	Take Wairau Aquifer FMU water from well P28w/3072 up to a maximum rate of 25,600 cubic metres per year. Use water in a winery on Lot 1 DP 543543.	229 Jacksons Road, Rapaura	25/07/2023

	Delegation	Consent Holder	Consent No.	Consent(s) Issued	Proposal	Site Location	Date Issued
78.	104B	KiwiRail Holdings Limited	U230193	Land Use (River Surface or Bed Activity); Land Use (Activity) (x2); Land Use (Land Disturbance)	Construct a stormwater outfall and associated rock protection works in the Wairau Riverbed (Grid Ref 1680944E 5410361N). Install a stormwater pipeline and pump station in Goulard Road. Install stormwater pipes and outfall in the Wairau River stopbank (Grid Ref 1680940E 5410349N). Undertake filling in the KiwiRail Gazetted yards at Spring Creek and on Lot 2 DP 4399.	Goulard Road, Spring Creek	25/07/2023
79.	104B	Whitehaven Wine Company Limited and A M and W M Beverley	U230174	Subdivision (Boundary Adjustment)	To subdivide Lot 1 DP 11858, Lot 2 DP 495490, Lot 2 DP 469458, Lot 2 DP 434530, Lot 1 DP 11560 into three allotments as a boundary adjustment.	Pauls Road, Blenheim	25/07/2023
80.	104B	Marlborough District Council on behalf of Marlborough Roads	U220622	Land Use (Activity)	Undertake filling of land with clean fill slip material up to a volume of approximately 125,000 cubic metres.	850 Queen Charlotte Drive, Linkwater	25/07/2023
81.	104B	D R and J S Ferrier	U220362	Subdivision (Allotment Creation)	Subdivide Lot 2 DP 373005 to create two allotments.	Endeavour Inlet, Queen Charlotte Sound / Tōtaranui	25/07/2023
82.	104B	Marlborough Lines Limited	U230476	Land Use (Activity)	A control room at Marlborough Lines Limited electrical lines depot yard and control site at 4 Taylor Pass Road, Blenheim. The site on which the work is proposed is designated Land for Industrial Park in the Proposed Marlborough Environment Plan.	4 Taylor Pass Road, Witherlea, Blenheim	25/07/2023
83.	104B	Boom Investments Limited	U230451	Subdivision (Boundary Adjustment)	Subdivide Lot 2 DP 1363 and Lot 4 DP 8883 as a boundary adjustment.	22 Stuart Street, Blenheim	26/07/2023

	Delegation	Consent Holder	Consent No.	Consent(s) Issued	Proposal	Site Location	Date Issued
84.	104B	AP Holdings 2013 Limited	U230438	Subdivision (Allotment Creation); Land Use (Activity)	Subdivide Lot 167 of and Part Lot 168 Section 46 District of Opawa into four allotments. To breach the northern boundary recession plane by the dwelling on Lot 2 created by U230438.01 and breach the northern and southern boundary recession planes by the dwelling on Lot 3 created by U230438.01.	60 South Street, Blenheim	26/07/2023
85.	104B	Westhaven Land Holdings & Manuka Fifty Limited	U230425	Water Permit (Dam Water); Water Permit (Use Water)	To dam up to 120,000 cubic metres of water within a storage reservoir on Lot 2 DP 558147 & Lot 2 DP 326213. Use water for the irrigation of up to 30 hectares of vineyard on Lot 12 DP 482618 & Sec 12 SO 496342 and 25 hectares of vineyard on Lot 2 DP 326213 & Lot 2 DP 558147. Use water for ancillary purposes on Lot 12 DP 482618, Sec 12 SO 496342, Lot 2 DP 326213 & Lot 2 DP 558147.	Stafford Creek, State Highway 1	26/07/2023

	Delegation	Consent Holder	Consent No.	Consent(s) Issued	Proposal	Site Location	Date Issued
86.	104B	Yelverton Creek Vineyard	U230311	Water Permit (Take Water) (x2); Water Permit (Use Water) (x2)	Take up to 9,780 cubic metres annually of Southern Springs FMU water from well P28w/4105 located on Lot 1 DP 6312. Take up to 960 cubic metres of Southern Springs FMU water annually from well P28w/4105 located on Lot 1 DP 6312. Use water for the irrigation of up to 2.7 hectares of vineyard and 0.5 hectares of hazelnut trees on Lot 1 DP 6312. Use water for frost protection to 2.7 hectares of vineyard located on Lot 1 DP 6312.	297 Middle Renwick Road, Blenheim	26/07/2023
87.	104B	Mark Jeffries Family Trust	U230456	Water Permit (Take Water); Water Permit (Use Water) (x2)	Take Wairau Aquifer FMU water from well P28w/4738 up to a maximum rate of 127,290 cubic metres per year. Use water for irrigation of up to 40 hectares of vineyard and 3.6 hectares of pasture and crops on Lot 1 DP 10455. Use water for ancillary uses on Lot 1 DP 10455.	34 Eckfords Road, Dillons Point	27/07/2023
88.	104B	Bethsaida Home Trust Limited	U210986	Land Use (Activity); Land Use (Land Disturbance)	Establish and operate new retirement accommodation units on Lot 2 DP 1971 and on part of Lot 1 DP 431959, adjacent to and in conjunction with the existing Bethsaida retirement accommodation. Undertake earthworks (excavation and filling) that exceed 50 cubic metres on Lot 2 DP 1971 and on part of Lot 1 DP 431959.	42 and 42A Weld Street, Blenheim	27/07/2023

	Delegation	Consent Holder	Consent No.	Consent(s) Issued	Proposal	Site Location	Date Issued
89.	104A	B McIntyre	U230481	Land Use Activity (x2)	Install and operate a FrostBoss C49 frost fan with a John Deere engine (Fan 1) on Lot 1 DP 450032. Install and operate a FrostBoss C49 frost fan with a John Deere engine (Fan 2) on Lot 1 DP 450032.	213 Northbank Road, Kaituna, Renwick	28/07/2023
90.	104B	Kainga Ora	U230206	Land Use (Land Disturbance); Land Use (Activity); Subdivision (Allotment Creation)	Carry out excavation for the purposes of site clearance and soil contamination removal, and to add 117m ³ of fill to build up the ground levels between 0 to 400mm, on Lot 3 DP 1826. To build two attached 2 storey three-bedroom housing units, and one single storey 2 bedroom housing unit, on Lot 3 DP 1826, and for the two front dwellings to breach recession planes with the road boundary. Subdivide the three dwellings on Lot 3 DP 1826 into separate allotments.	138 Charles Street, Blenheim	31/07/2023
91.	104B	Scott Family Winemakers Limited	U230181	Land Use (Activity) (x2)	Increase the winery processing capacity from 3,000 tonnes to 8,000 tonnes annually on Lot 1 DP 543543. Authorise the installation of ten (10) additional over height wine fermentation/storage tanks and associated catwalk with safety barrier/handrail on Lot 1 DP 543543.	229 Jackson Road, Rapaura	31/07/2023
92.	104B	Faux-Jumeaux Holdings Limited	U230445	Discharge Permit (to Land)	Discharge primary treated domestic wastewater to land on Lot 1 DP 7693.	197 Rapaura Road, Marlborough	01/08/2023

	Delegation	Consent Holder	Consent No.	Consent(s) Issued	Proposal	Site Location	Date Issued
93.	104B	D Koubek	U230360	Discharge Permit (To Land)	Discharge secondary treated domestic wastewater to land on Lot 1 DP 440534.	22 Richardson Ave, Burleigh, Blenheim	01/08/2023
94.	104B	Marlborough Sounds Investments Limited	U230120	Coastal Permit	Coastal Permit for the installation and use of a replacement café/bar building (previously consented under U161181.01) measuring 4 metres x 8.2 metres, approximately 3 metres in height, with a 1.8 metres x 8.2 metres canopy to front on a newly constructed deck area and located approximately 3 metres further seaward; to construct a replacement fixed decking area, raised in height a further 200mm (previously consented under U161181 and U190578.01), measuring approximately 10.9 metres x 8.5 metres, under and in front of café/bar building, and approximately 18 metres x 4.5 metres to the east and north side; to construct new fixed decking measuring approximately 3.2 metres x 8.5 metres as an extension to the replacement fixed decking in front of café/bar building; to construct a timber veranda to east and north of café/bar building, measuring approximately 6.3 metres x 4.5 metres.	Punga Cove Resort, Camp Bay, Endeavour Inlet, Queen Charlotte Sound/Tōtaranui	01/08/2023

	Delegation	Consent Holder	Consent No.	Consent(s) Issued	Proposal	Site Location	Date Issued
95.	104B	Marlborough District Council	U230392	Land Use Consent; Water Permit; Discharge Permit	Construct and maintain abutments and associated erosion protection works in the Waitohi River associated with the new Dublin Street overbridge (consented under U210768). Temporarily divert the flow of the Waitohi River during construction of the Dublin Street overbridge (consented under U210768). Temporarily discharge sediment to the Waitohi River during construction of the Dublin Street overbridge (consented under U210768).	Waitohi River, Dublin Street, Picton	01/08/2023
96.	104A	Delegat Limited	U230489	Land Use (Activity) (x5);	To install and operate a FrostBoss C49 frost fan with a Perkins engine (Fan 1) on Part Section 65 Wairau District. To install and operate a FrostBoss C49 frost fan with a Perkins engine (Fan 2) on Part Section 65 Wairau District. To install and operate a FrostBoss C59 frost fan with a Perkins engine (Fan 3) on Part Section 65 Wairau District. To install and operate a FrostBoss C49 frost fan with a Perkins engine (Fan 4) on Lot DP 9554. To install and operate a FrostBoss C49 frost fan with a Perkins engine (Fan 5) on Lot DP 9554.	198 Mills and Ford Road East, Spring Creek	02/08/2023

	Delegation	Consent Holder	Consent No.	Consent(s) Issued	Proposal	Site Location	Date Issued
97.	104B	J Winston and T M Rowberry	U230475	Water Permit (Take Water); Water Permit (Use Water) (x2)	Take Wairau Aquifer FMU water from well 10753 up to a maximum rate of 18,522 cubic metres per year. Use water for the irrigation of up to 8.5 hectares of vineyard on Lot 2 DP 6405. Use water for ancillary purposes on Lot 2 DP 6405.	163 Dillons Point Road, Blenheim	02/08/2023
98.	104B	Longfield Farm Limited	U230446	Land Use (Bore)	Install two bores located on road corridor adjacent to Lot 1 DP 403528.	Road corridor adjacent to Lot 1 DP 403528.	02/08/2023
99.	104B	Marberry Estate Limited	U230359	Land Use (River Surface or Bed Activity); Land Use (Land Disturbance); Water Permit (Divert Water)	Undertake works in Birdlip Stream to re-align a portion of the stream on Section 11 Block XI Onamalutu SD, Part Lot 4 DP 4688 and Lot 1 DP 6968. Undertake land disturbance within 8 metres of Birdlip Stream to re-align a portion of the stream on Section 11 Block XI Onamalutu SD, Part Lot 4 DP 4688 and Lot 1 DP 6968. Provide for the diversion of water as a result of realigning Birdlip stream on Section 11 Block XI Onamalutu SD, Part Lot 4 DP 4688 and Lot 1 DP 6968.	Birdlip forest accessed to the west of 861 Onamalutu Road	02/08/2023
100	104B	C D and C M Reeks and Public Trust	U230480	Discharge Permit (To Land)	Discharge secondary treated domestic wastewater to land on Lot 48 DP 1896.	438 Port Underwood Road, Whatamango Bay	03/08/2023

	Delegation	Consent Holder	Consent No.	Consent(s) Issued	Proposal	Site Location	Date Issued
101	104B	MacLab (NZ) Marine Assets Limited	U230447	Coastal Permit	New coastal permit (replacing MFL498 and U060958) to realign and operate, using conventional longline methods, an existing 7.07 hectare marine farm (site 8306) located in Brightlands Bay, Pelorus Sound/Te Hoiere.	Brightlands Bay, Pelorus Sound/Te Hoiere	03/08/2023
102	104B	Wye Hills Limited	U230419	Land Use (Dam); Land Use (River Surface or Bed Activity); Water Permit (Dam Water); Water Permit (Divert Water) (x2); Water Permit (Take Water)	Construct an off-stream storage reservoir of up to 7.75 metres in height on Lot 2 DP 424918. Construct a coffer dam in an unnamed ephemeral watercourse on Lot 2 DP 424918. Dam up to 75,000 cubic metres of water within a storage reservoir on Lot 2 DP 424918. Divert sub-surface water beneath a storage reservoir and stormwater in a diversion drain located on Lot 2 DP 424918. Divert catchment run-off via a cutoff drain to be constructed on Lot 2 DP 424918. Abstract up to 5,789 cubic metres per day of C Class Wairau River FMU water from an existing intake in the Wye River (Grid Reference 1626682E 5689055N), for placing into storage.	4603 State Highway 63, Wairau Valley	03/08/2023
103	104B	Z Energy Limited	U230407	Land Use (Activity)	Establish and operate an electric vehicle charging facility at the existing Z Picton service station on part of Lot 1 DP 10296.	89 -109 High Street, Picton	03/08/2023

	Delegation	Consent Holder	Consent No.	Consent(s) Issued	Proposal	Site Location	Date Issued
104	104B	Framingham Wines Limited	U230152	Water Permit (Take Water) (x2); Water Permit (Use Water) (x3)	Abstract Wairau Aquifer FMU water up to a maximum of 23,434 cubic metres per year from well P28w/0426 located on Lot 1 DP 11893, and well P28w/3340 located on Lot 1 DP 11883. Abstract Wairau Aquifer FMU water up to a maximum of 9,879 cubic metres per year from well P28w/3432 located on the boundary of Lot 1 DP 10952 and Lot 1 DP 11883. Use water for the irrigation of up to 16 hectares of vineyard on Lot 1 DP 11883, Lot 1 DP 11893 and Lot 1 DP 10952. Use water for ancillary viticulture purposes outside of the irrigation season on Lot 1 DP 11883, Lot 1 DP 11893 and Lot 1 DP 10952. Use water for winery, cellar door and staff amenity purposes on Lot 1 DP 10952.	19 Conders Bend Road, Renwick	03/08/2023
105	104B	G A E Hall	U190113	Discharge Permit (To Land)	Discharge primary treated domestic greywater to land on Lot 2 DP 3613.	Chaucer Bay, Bay of Many Coves, Queen Charlotte Sound/Tōtaranui	03/08/2023
106	104B	Talley's Limited	U230409	Land Use (Land Disturbance)	Undertake land disturbance within 8 metres of intermittent waterways including Starborough Creek and filling in excess of 1,000 cubic metres on Lot 2 DP 401760, Part Section 6 Block XXII Taylor Pass SD and Lot 2 DP 332317.	714 Marama Road, Awatere Valley	04/08/2023

	Delegation	Consent Holder	Consent No.	Consent(s) Issued	Proposal	Site Location	Date Issued
107	104B	Marberry Estate Limited	U230478	Land Use (Activity)	Undertake works within the bed and banks of Timms Creek adjacent to Lot 1 DP 7226 to remediate bank erosion including the placement of rock riprap and backfilling and maintenance of bank protection works.	2706 Northbank Road, Northbank	07/08/2023
108	104B	Marlborough District Council	U230423	Land Use (River Surface or Bed Activity) (x4);	Undertake works in the Waihopai Riverbed to install a new bridge including: the removal of instream vegetation; the construction of new road approaches; the levelling of gravels to form work platforms; the excavation of diversion channels/flow paths; the construction and maintenance of bridge and bank protection structures; and the construction of a new bridge. Undertake works in the Waihopai Riverbed to remove the current temporary Bailey Bridge and remaining span and abutments of the previous bridge located within the Waihopai River including any excavation of diversion channels/flow paths.	Bridge 256, Waihopai Valley Road, Waihopai Valley	07/08/2023

	Delegation	Consent Holder	Consent No.	Consent(s) Issued	Proposal	Site Location	Date Issued
109	104B	Marlborough District Council	U230423 Cont'd	Land Use (Land Disturbance);	<p>Undertake works in unnamed waterways located adjacent to Lot 3 DP 8558 at/about the following locations: 1646227E 5387364N; 1645828E 5387150N; and 1645689E 5387074N to install three new culverts.</p> <p>To occupy the Waihopai Riverbed including the space below and above the riverbed with Bridge 256 and to occupy unnamed waterways located adjacent to Lot 3 DP 8558 at/about the following locations: 1646227E 5387364N; 1645828E 5387150N; and 1645689E 5387074N with three new culverts.</p> <p>Undertake land disturbance and operate wheeled or tracked machinery within 8 metres of the Waihopai River to remove riparian vegetation adjacent to the Waihopai River to enable the construction of new road approaches to a new bridge; to undertake excavation and filling to construct new stretches of Waihopai Valley Road; and to reinstate the area adjacent to the previous bridge location including the establishment of riparian vegetation.</p>	Bridge 256, Waihopai Valley Road, Waihopai Valley	07/08/2023

	Delegation	Consent Holder	Consent No.	Consent(s) Issued	Proposal	Site Location	Date Issued
110			U230423 Cont'd	Water Permit (Divert Water) (x2)	Divert the Waihopai River during the installation of a new Bridge 256, the removal of the temporary Bailey bridge, and removal of remaining span and abutments of the previous bridge and for ongoing maintenance of bridge and bank protection structures. Divert water within ephemeral water channels to provide for the installation of three culverts.		
111	104B	D C Eatwell	U230490	Coastal Permit	New coastal permit (replacing U150232.01) for the continuation of an existing swing mooring (M1053) in Okiwa Bay.	Okiwa Bay, Grove Arm, Queen Charlotte Sound/Tōtaranui	08/08/2023
112	104B	W F Bell and J D Smith-Bell	U230460	Subdivision (Boundary Adjustment)	Undertake a boundary adjustment between Lots 6 & 11 DP 366062.	64 Tepuia Heights, Havelock	08/08/2023
113	104B	Saltwater Station Limited	U230182	Subdivision (Boundary Adjustment)	To subdivide Lot 1 DP 4232 and Section 1 Survey Office Plan 7341 into two allotments as a boundary adjustment.	75 Saltwater Lane, Wairau Valley	08/08/2023
114	104B	Whitehaven Wine Company Limited	U230455	Land Use (Dam); Water Permit (Dam Water); Water Permit (Divert Water)	Construct a dam with a maximum wall height of 10.3 metres on Lot 1 DP 513456. To dam up to 75,000 cubic metres of water on Lot 1 DP 513456. To divert sub-surface water under a storage reservoir located on Lot 1 DP 513456.	1480 Awatere Valley Road, Awatere Valley	09/08/2023
115	104B	24 August 2023 I W and P M Newble	U230252	Discharge Permit (To Land)	To discharge primary treated domestic wastewater to land on Lot 6 DP 3072.	Whatapu Point, Resolution Bay, Queen Charlotte Sound/Tōtaranui	09/08/2023

	Delegation	Consent Holder	Consent No.	Consent(s) Issued	Proposal	Site Location	Date Issued
116	104B	Waka Kotahi NZ Transport Agency	U230262	Land Use (Activity)	To alter the L2 designation boundary in 3 locations, to incorporate land from Lot 3 DP 458539 and Lot 2 DP 458539; Lot 1 DP 9050, Lot 2 DP 326711, Section 2 SO 473487 and Section 1 SO 473487, and Lot 3 DP 493762 to extend the road corridor and to align a portion of the road corridor that is not currently aligned with the rest of the corridor.		10/08/2023
117	104B	TC Developments Limited	U230461	Subdivision (Allotment Creation)	Subdivide Lot 6 DP 2029 into two allotments.	20 Anglesea Street, Renwick	11/08/2023
118	104B	Slymjek Limited	U230178	Subdivision (Allotment Creation); Land Use (Activity) (x2); Land Use (Land Disturbance)	Subdivide Lot 56 DP 2000 into 3 residential allotments. To authorise the recession plane encroachment of the existing house on Lot 1 and the access leg boundary for Lot 2 (of the subdivision under U230178.01). Construct or erect a dwelling on each of Lots 2 & 3 of the subdivision under U230178.01. Undertake excavation within a Groundwater Protection Zone for the installation of services, construction of a right of way, and building foundations.	10 Smith Avenue, Blenheim	11/08/2023
119	104B	Mount Riley Wines and Estates Limited	U220983	Water Permit (Take Water) (x5)	Take A Class Wairau River FMU water up to a maximum rate of 206 cubic metres per day from a shallow well at/about Grid Ref 1634305E 5394940N.	3782 State Highway 63, Wairau Valley	11/08/2023

	Delegation	Consent Holder	Consent No.	Consent(s) Issued	Proposal	Site Location	Date Issued
120			U220983 Cont'd		<p>Take A Class Wairau River FMU water up to a maximum rate of 300 cubic metres per day from a shallow well at/about Grid Ref 1634305E 5394940N.</p> <p>Use water for the irrigation of up to 22 hectares of vineyard on Lot 4 DP 9199.</p> <p>To take A Class Wairau River FMU water up to a maximum rate of 506 cubic metres per day, up to a maximum of 2,200 cubic metres per year outside the irrigation season, from a shallow well at/about Grid Ref 1634305E 5394940N.</p> <p>Use water for ancillary purposes on Lot 4 DP 9199 outside of the irrigation season.</p>		

Record No: 23171395