

News from Marlborough District Council.

Graham Norton awarded Marlborough Grape Ambassador role

Mayor Nadine Taylor hosted broadcaster Graham Norton in Marlborough last week, who was here with his colleagues from Invivo Wines.



Mayor Taylor with Graham Norton and Invivo co-founders Rob Cameron (second left) and Tim Lightbourne

Mayor Taylor said it was a great pleasure to meet Graham and award him the honorary title of ‘Official Marlborough Grape Ambassador.’

“Graham is not only a legend and high-profile broadcaster and author, he is a strong advocate of Marlborough sauvignon blanc. In fact, our sauvignon blanc is quite a lot like Graham himself - vibrant, refreshing and fun, with razor-sharp acidity!”

She said Graham’s visit would do wonders for Marlborough’s profile in overseas media and keep New Zealand’s premium wine on the international radar.

Prime Minister Christopher Luxon also joined them at Harvest restaurant near Blenheim for a seasonal meal featuring top Marlborough food producers including Mills Bay mussels, NZ King salmon, Pinoli pine nuts and Cranky Goat cheese.

Flaxbourne Heritage Centre opening

A full programme of activities is planned for the grand opening of the new Flaxbourne Heritage Centre next Friday 11 April.



Hardworking trustees John Hickman, Kevin Loe and Sally Peter have been integral in getting the Flaxbourne Heritage Centre up and running

The celebrations kick off at 10am and include a Ward School kapa haka, speeches, ribbon cutting, kai blessing and food.

After lunch festivities continue with old Ward School bus rides, a Whale Trail treasure hunt, school tug of war, a rugby game and the museum opening to visitors.

A wide range of artefacts and memorabilia detailing the area’s history of Māori settlement, moa hunters, shipwrecks, early farmers, war history and landscapes will be on show.

Local historian Sally Peter, one of several industrious workers behind the new facility, said the museum is filled with personal reflections and memories.

“It’s been a real community effort and it’s exciting to get it to this stage,” she said.

Museum designer Sally Papps who designed the space has worked tirelessly with her team alongside locals to get the collection installed and displayed.

One of the most spectacular is the original glass Fresnel lens from the Cape Campbell lighthouse, which featured in the 2016 movie Light Between Oceans. It had to be dismantled and moved piece by piece from the lighthouse to its new home where it takes pride of place.

The Flaxbourne section of the Whale Trail opens on the same day. It runs from Te Ruakanakana/ Lake Elterwater to the Whale Trail shelter, built by Blenheim Rotary South, opposite the new Heritage Centre.

Project Manager of the Whale Trail Nigel Muir said finalising the trail design and finishing earthworks along the Flaxbourne section was a significant milestone.

“We are incredibly proud to collaborate with the Flaxbourne Heritage Centre to celebrate these two Ward community assets and grateful to all of our supporters and partners who have made it possible,” he said

The centre creates a village hub for the Flaxbourne community and has been years in planning after the 2016 Kaikōura earthquake destroyed the old museum and damaged the community hall.

Chlorination moves a step closer

A contract has been awarded for the upgrade of Blenheim’s water treatment plants to enable chlorination disinfection.

Mason Engineers will begin work in early April, and the plants are expected to be up and running by October.

The upgrade is needed to ensure Blenheim’s water supply complies with the Government’s Water Services Act and Drinking Water Quality Assurance Rules.

National water regulator Taumata Arowai requires a residual disinfectant - typically chlorine - to be added to reticulated water supplies in New Zealand.

Blenheim’s water, which is delivered to 10,700 households, is currently treated for protozoa and bacteria, but has no chlorine dosing.

Chlorine is a simple and effective way of ensuring Blenheim’s water supply is fully disinfected and safe for drinking, says Taumata Arowai. It is used worldwide to purify water supplies as it can kill most common bacteria including campylobacter and norovirus.

It’s used alongside other processes such as protozoa barriers which remove or inactivate single-celled parasites including cryptosporidium and giardia. Water supplies in Renwick, Picton, Havelock, Wairau Valley, Seddon and rural Awatere are already chlorinated

Chlorine has been used to help disinfect community drinking water supplies for more than 120 years and performs multiple functions. It can be a primary form of treatment for bacteria and viruses and a secondary or residual disinfectant after primary treatment is completed, to ensure that water stays safe as it is distributed to consumers through pipe networks.

World Health Organisation studies confirm that the small amount of chlorine needed to treat drinking water is safe. The chlorine levels used in drinking water are too low to be a risk to health.

For more information go to: www.marlborough.govt.nz/services/utilities/water-supplies/water-supplies-faqs/chlorination-faqs

Mural brightens building

A concrete block shed on Alfred Street in Blenheim has come to life thanks to a Council initiative involving enthusiastic college students and Youth Council members.

The Council-owned shed was hidden before the former Millennium Art Gallery was demolished last year.

After the gallery’s demolition - it relocated to Te Kahu o Waipuna - the area was cleared and a grass area planted with walkways and new trees.

It meant the grey wall was now highly visible and a logical place for a new mural to add to to Blenheim’s growing street art portfolio.

Well-known street artist Sean Duffell worked with the students from Marlborough Girls’ College including a new Youth Council member on the project.

Students were canvassed for ideas on the “what does Marlborough mean to you” theme which Sean took and worked into a suitable composition, choosing a minimal but striking colour combination.

With brushes in hand the team, guided by Council’s Events and Community Partnerships Officer Natalie Lawler, completed the mural changing the landscape of the newly grassed area.

“We started work with undercoat and did the outline on Friday night, then spent all day Saturday working on the mural, and then a few hours to finish on the Sunday,” Natalie said.

Youth Council funded the project.



Well-known street artist Sean Duffell with two of the Youth Council members who helped paint the striking mural

New cycleway to close briefly

Part of Renwick’s vineyard bike trail is closed until 16 April.

The closure is needed so river maintenance work can be carried out.

The part of the cycleway affected runs between the garlic factory at Old Renwick Road and the start of the Upper Opaoa stopbank.

As the path runs close to the river and borders private property, there is no safe detour available so a full closure is needed.

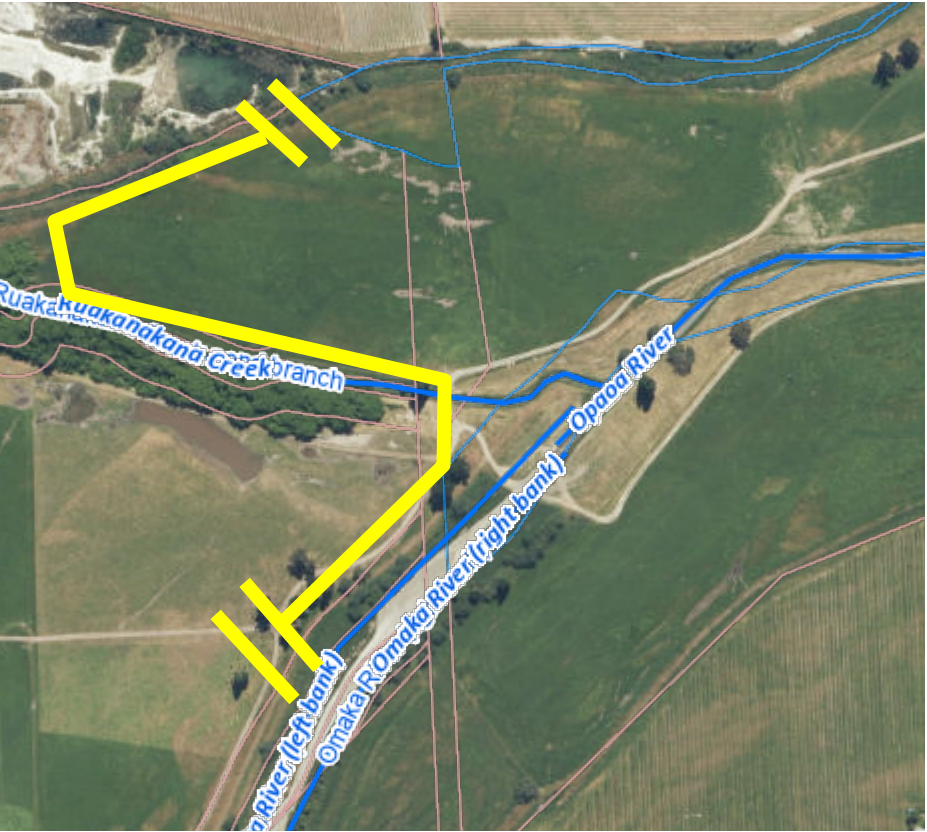
One of the final sections to be completed was a 6.5km trail linking Allan Scott Winery in Jacksons Rd to Renwick using

off-road routes and it is that part which will be closed.

The Marlborough Vineyard Trail was officially opened by Marlborough Mayor Nadine Taylor last month.

The 20km trail around Renwick takes in some of Marlborough’s most popular wineries and cellar doors and improved safety by taking cyclists off busy roads.

While some of the trail is near roads, much is on the edge of vineyards and on river stopbanks and its development was possible with the help of landowners and wineries.



Dog registration 2025/26

The dog registration year runs from 1 July 2025 to 30 June 2026. All dogs over three months old must be registered with Animal Control.

Dates to remember:

- end of May/early June - registration renewal forms sent out
- 30 June - registration expires for 2024/25
- 1 July - payment due for 2025/26 year
- 1 August - penalty of 50 per cent added to registrations not paid
- 1 September - unregistered dogs liable for penalties, infringements and seizure

Get your dog registration via email from Council at: links.marlborough.govt.nz/dog and get notifications via Antenna at: links.marlborough.govt.nz/Antenna

Forms for the 2025/26 dog registration year will be sent to the owner’s last known address by the beginning of June. You must notify Animal Control if:

- ownership of your dog changes
- your dog leaves the district
- you have a change of address
- your dog dies

Contact Animal Control, 58 Main Street, Blenheim, Ph (03) 520 9033 or email: animalcontrol@maataawaka.co.nz



Public Notices

Meet your Council



Mayor Nadine Taylor leads a team of 14 elected councillors. They are responsible for making decisions and developing policies that will help shape our province into the future.

Council's vision is that Marlborough is a globally-connected district of smart, progressive, high-value enterprises, known for its economic efficiency, quality lifestyle and wellbeing, caring community, desirable location and healthy natural environment.

For more information or to contact one of your elected representatives, go to: www.marlborough.govt.nz/your-council/councillors or Ph: 03 520 7400.

Have your say on Draft Waste Management and Minimisation Bylaw

Submissions are invited on the Draft Waste Management and Minimisation Bylaw 2025. This will replace the Waste Bylaw 2017 which has been superseded by legislative changes and the new kerbside collection service. Consultation closes on 17 April.

The new bylaw provides a mechanism for managing and minimising Marlborough's waste now and into the future.

Read the proposed draft bylaw at: www.marlborough.govt.nz

Hard copies are available from Council's Customer Service Centre in Blenheim. Make a submission online at: www.marlborough.govt.nz/your-council/have-your-say-consultations

Sport and Recreation Community Activity Fund closing soon

Council's 2024/2025 Sport and Recreation Community Activity Fund closes next Monday 7 April. Applications are being accepted for activities held before 28 February 2026.

There is \$30,000 available for allocation per annum.

This fund is open to event organisers or local clubs and organisations looking to create small sport and community activities that are of low cost to participants and that encourage and promote involvement, accessibility and physical activity.

Key dates:

- applications close: 5pm Monday 7 April 2025
- funding decision by: 5pm Thursday 24 April 2025

Applications must be completed via Council's website at: www.marlborough.govt.nz/recreation/events/sport-and-recreation-community-activity-fund

Enquiries to Samantha Young, Events and Community Partnerships Manager; Ph: 03 520 7400 or email events@marlborough.govt.nz



Proposed road closures, navigation warnings and alcohol licensing

For the latest public notices, please go to: www.marlborough.govt.nz/your-council/latest-news-notice-and-media-releases/all-news-notice-and-media-releases



MARLBOROUGH

Heritage Festival

15-18 MAY 2025

OUR PEOPLE, OUR PAST

REGISTER FOR EVENTS



www.eventfinda.co.nz/userheritagel8x/events

Blenheim Customer Service Centre
15 Seymour Street, Blenheim 7201
Ph: 03 520 7400
mdc@marlborough.govt.nz

Mon - Tues	8.30am - 4.30pm
Wed	8.30am - 12.30pm 1.30pm - 4.30pm
Thurs - Fri	8.30am - 4.30pm

Picton Library & Service Centre
2 Dublin Street, Picton 7220
Ph: 03 520 7493
pictonlibrary@marlborough.govt.nz

Mon - Tues	8.30am - 5pm
Wed	9am - 5pm
Thurs - Fri	8.30am - 5pm
Sat	10am - 4pm
Sun	1pm - 4pm

Awatere and Dashwood rural boil water notice

Water from Council's reticulation network to the Awatere and Dashwood rural areas should be boiled.

It does not currently meet the NZ Drinking Water Standards and may contain bacteria or protozoa that are harmful to human health.

All water used for drinking, food preparation or cleaning teeth should be boiled before use.

Treated water is available at the public taps on Marama Road, outside Seddon School. For further information contact Council on Ph: 03 520 7400.



Council's Harbours team - working to ensure our waterways are safe for everyone to enjoy.

Contact the Harbourmaster's Office if you need advice or information about Marlborough's harbours.

03 520 7400 | HARBOURS@MARLBOROUGH.GOV.T.NZ

