

# News from Marlborough District Council.

## Kevin Judd named Marlborough’s newest living cultural treasure

Pioneering Marlborough photographer and winemaker Kevin Judd (below) is the 2025 Marlborough living cultural treasure.



The award is open to those who have made an extraordinary contribution to cultural endeavour in Marlborough.

Receiving the prestigious title at a ceremony at Te Kahu o Waipuna, Mr Judd said he was thrilled to be the 12th recipient, and humbled to be included in such a list of prominent Marlborough artists.

“My interest in photography has evolved, initially focusing on the spectacular vineyard landscapes and more recently on the stunning natural beauty of Marlborough’s mountains, the dramatic coastal terrain and the precious bird life that inhabits it. It’s an absolute pleasure to share my images and I hope that they

help generate a deeper appreciation of Marlborough,” he said.

Mayor Nadine Taylor said the award provided a special opportunity to acknowledge worthy Marlburians for their exemplary service to the arts, culture and creative sectors.

“Kevin joins a select and inspiring group of Treasures who have made a significant contribution to our cultural landscape,” she said.

Toni Gillan, who was instrumental in establishing the award, said if there was ever a name synonymous with capturing the essence of Marlborough’s unique and varied landscapes it had to be Kevin Judd.

“Kevin’s recording and sharing of the changes in nature and our landscape is a treasured archival work in progress which, as a digital record will be with Marlburians forever.”

One of his early images of the Richmond Ranges was used on a Cloudy Bay wine label. It helped establish Cloudy Bay and Marlborough sauvignon blanc as an iconic worldwide brand.

The award, given once every three years, was established in 2012 by Marlborough Museum in partnership with Council and the Marlborough Express. In 2023, the Marlborough Heritage Trust closed its operations and in early 2024 Council took on its guardianship.

## NIWA helps Council survey Sounds seafloor

The research vessel Ikatere has been exploring biodiversity on the seafloor in Te Hoiere/Pelorus Sound.



NIWA scientists and crew on the vessel Ikatere

The initial phase of this survey, which kicked off in mid-March, wrapped up last week.

Council’s Principal Coastal Scientist Oliver Wade said a vital part of effectively managing the marine ecosystem was to develop a comprehensive understanding of its diverse elements.

“This information can be used to identify significant habitats and areas of biodiversity,

enabling the Council to explore ways to preserve these area,” he said.

“It can help inform policies directly related to the coastal marine area, whether involving the placement of marine farms or places where people can anchor vessels.

It can also enhance our understanding of the impacts of land use on the marine environment.”

Mr Wade said that land erosion, worsened by storms over recent years, had a considerable effect on the seafloor.

“We are observing significant sedimentation due to erosion. This material settles and accumulates on the seafloor, creating a lasting legacy that doesn’t disperse. It poses a major problem.”

Council is funding the work, which is managed by a committee comprising DOC, Fisheries NZ and Council, with the support of Ngāti Koata and Ngāti Kuia who gifted the project the name Te Hoiere Ine Parumoana.

NIWA marine ecologist Dr Mark Morrison says the survey used a towed camera system CoastCam to map animal species, habitat and geology.

“As part of this systematic sampling, we sought new areas of important habitat, including those that support ecosystem functioning, biodiversity and fisheries. We also conducted limited sampling to determine if juvenile snapper nurseries, previously sampled in the 1980s, still exist today, including areas now covered by mussel farms.”

This survey marks the third phase of the Te Hoiere Ine Parumoana project. The information gathered will contribute to the analysis of seafloor mapping data collected in 2020. To learn more, go to: [www.marlborough.govt.nz/environment/coastal/seabed-habitat-mapping](http://www.marlborough.govt.nz/environment/coastal/seabed-habitat-mapping)

## Local alcohol policy opens for consultation

Marlborough’s alcohol sales, supply and consumption will come under scrutiny during the implementation of the area’s Local Alcohol Policy (LAP).

The LAP provides an opportunity for people to have their say on alcohol sales and consumption in their communities. It also provides certainly for both regulatory agencies and licensees on what will and won’t be allowed.

An LAP identifies the location of licensed premises and outlines whether further licenses should be issued in the district. It also outlines maximum trading hours and discretionary conditions that could be appropriate.

Marlborough’s draft LAP proposes no new alcohol licences be allowed within 100 metres of a sensitive site, such as a school, unless in a business zone, Council’s Chief Licensing Inspector Karen Winter said.

“This is an important way to minimise alcohol exposure to vulnerable groups of people,” she said. “In particular, young people’s exposure to alcohol outlets

and susceptibility to alcohol advertising provides the grounds for the inclusion of a buffer between licensed premises and sensitive sites.”

The LAP also seeks a cap on off-licence bottle stores (not cellar doors, hotels or supermarkets) and a restriction of bar opening hours to 2am rather than the existing 3am. Similarly, off licence trading would be reduced from 11pm to 10pm.

In July 2024 Council confirmed it wished to have an LAP that reinforced the Sale and Supply of Alcohol Act in ensuring the safe and responsible sale, supply and consumption of alcohol and minimising alcohol-related harm.

You can make a submission at: [www.marlborough.govt.nz/your-council/have-your-say-consultations](http://www.marlborough.govt.nz/your-council/have-your-say-consultations)

For questions email: [alcohol@marlborough.govt.nz](mailto:alcohol@marlborough.govt.nz) or contact Council’s Environmental Health Team on: Ph 03 520 7400.

Submissions close on 30 May 2025 and submitters can speak to their submission.

## New Cook Strait ferries for Christmas 2029

Mayor Nadine Taylor says Marlborough is ready to work at pace with Government to support the requirements of new ferries announced recently by Minister for Rail Winston Peters.

Two new rail ferries will enter Cook Strait service in time for Christmas 2029. The new ferries will be approximately 200m in length and 28m wide. Each will have capacity for 1,500 passengers and 2.4km of lanes for cars, trucks and 40 rail wagons.

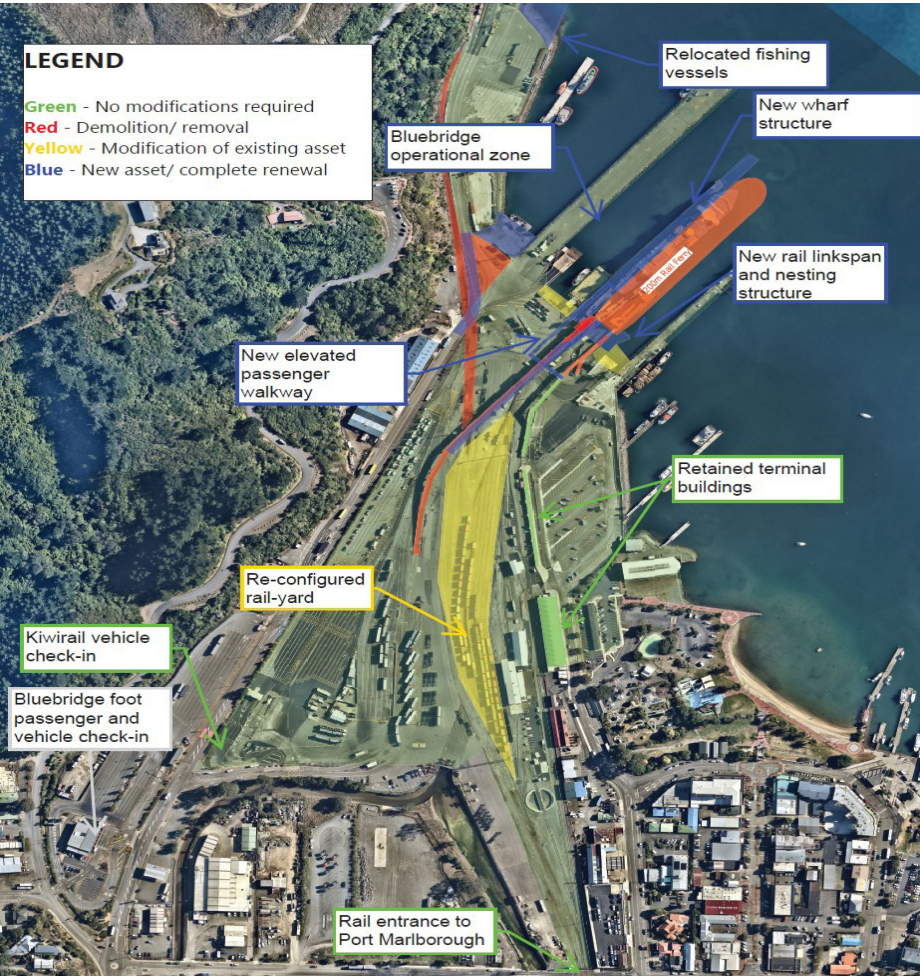
“It’s welcome news for us to finally understand the scope and nature of the new ferries planned for Cook Strait. It gives us greater certainty around what needs to be designed and delivered so we can have the conversations we need to with our community,” she said.

“This decision gives Port Marlborough the certainty it needs to move forward

with detailed design to further refine the new port infrastructure requirements and its associated costs. We look forward to continuing the work with Government, KiwiRail and NZTA to ensure all facets of the project deliver the best outcome for the country and Marlborough.”

Chief Executive of Port Marlborough Rhys Welbourn said the announcement was a significant step forward in progressing a solution for Cook Strait that serves the whole country.

“Now we have certainty over the type of ferries, we can progress with detailed design and commercial negotiations to ensure we have the right infrastructure that will meet the needs of New Zealand’s supply chain, deliver for our customers and community, and protect the unique environment that we operate in.”



Graphic provided by office of Minister for Rail

## Marlborough Matariki Event Fund closes Monday

Are you part of an organisation planning to hold an event to recognise Te Rā Aro ki a Matariki?

Council is seeking applications for the Mānawatia te Kahui o Matariki/ Marlborough Matariki Event Fund which celebrates and supports the regeneration and sustainability of mātauranga Māori associated with Te Kāhui o Matariki. Applications close Monday 14 April at 5pm.

The contestable fund aims to support events that recognise not only Te Rā Aro ki a Matariki, the public holiday, but also the wider kaupapa and principles of Matariki. The event must take place within Marlborough and be free or low

cost, family-friendly and accessible to all.

Priority will be given to events that can demonstrate documented support from iwi and must demonstrate how funding would advance and promote one or more of the three major principles of Matariki.

To apply go to: [www.marlborough.govt.nz/recreation/events/manawatia-te-kahui-o-matariki-fund-marlborough-matariki-community-event-fund](http://www.marlborough.govt.nz/recreation/events/manawatia-te-kahui-o-matariki-fund-marlborough-matariki-community-event-fund)

If you have any enquiries please contact Arts, Culture and Heritage Manager Nicola Neilson on Ph: 03 520 7400 or email: [nicola.neilson@marlborough.govt.nz](mailto:nicola.neilson@marlborough.govt.nz)



Rangitāne o Wairau’s event to celebrate Te Rā Aro ki a Matariki at the Wairau Bar last year

## Look out for moth plant

Moth plant, an attractive evergreen climber with delicate bell-shaped white flowers and large seed pods, is a pest that if left uncontrolled, dominates its habitat.

Biosecurity Manager Liam Falconer asks property owners to contact Council if they suspect a moth plant is growing in their garden.

“Mature moth plants produce large pods containing hundreds of tiny seeds, which are released as they dry out and split during autumn and winter,” he said. “The plant is poisonous, and its milky white sap can cause skin irritation.”

The plant has a limited distribution and density here and Council’s long-term goal is to maintain infestations at very low levels.

A native of South America, moth plant was introduced as an ornamental species in the 1880s. It is said to have earned its name due to the ability of its flowers to trap moths.

As part of Council’s regional pest management plan, it is subject to a sustained control programme. Biosecurity staff visit infected sites regularly to ensure all infestations are controlled before they seed.

“If you find moth plant in your garden, please call or email us, and we’ll come by and remove it at no cost,” said Mr Falconer.

Contact Council’s Biosecurity team on Ph: 03 520 7400 or email: [biosecurity@marlborough.govt.nz](mailto:biosecurity@marlborough.govt.nz)



Biosecurity Officer Jamie Aitchison stands next to a moth plant found on a Blenheim property



# Public Notices

## Meet your Council



Mayor Nadine Taylor leads a team of 14 elected councillors. They are responsible for making decisions and developing policies that will help shape our province into the future.

Council's vision is that Marlborough is a globally-connected district of smart, progressive, high-value enterprises, known for its economic efficiency, quality lifestyle and wellbeing, caring community, desirable location and healthy natural environment.

For more information or to contact one of your elected representatives, go to: [www.marlborough.govt.nz/your-council/councillors](http://www.marlborough.govt.nz/your-council/councillors) or Ph: 03 520 7400.

## Council services over Easter

Council's Blenheim office will be closed from 4.30pm Thursday 17 April and will reopen on Tuesday 22 April at 8.30am.

If you have an urgent issue during this time, please phone 03 520 7400.

### Waste services

All Council waste facilities including transfer stations, the Recycling Centre, Hazardous Waste Centre and Dump Shop will be closed on Good Friday but open normal hours on the other days.

### Landfill

The Bluegums landfill will be closed on Good Friday. On all other public holidays, the landfill will be open from 8am to 12 noon.

### Kerbside collections

There will be no kerbside collection on Good Friday. If your collection day is Friday, please place your wheelie bin out for a 7am Saturday collection. Kerbside collection continues as normal on all other days. To download the Wheelie Bin Collection Schedule, go to: [links.marlborough.govt.nz/collection-day](http://links.marlborough.govt.nz/collection-day)

### Marlborough District Libraries

Marlborough Library (Blenheim) and Picton Library and Service Centre will be closed on Friday 18 April, Sunday 20 April and Monday 21 April. The libraries will be open on Saturday 19 April from 10am to 4pm.

### Bus services

Bus services will not operate on Good Friday 18 April or Easter Monday 21 April. Normal services will operate on Saturday.



### Blenheim Customer Service Centre

15 Seymour Street, Blenheim 7201  
Ph: 03 520 7400  
[mdc@marlborough.govt.nz](mailto:mdc@marlborough.govt.nz)

Mon - Tues	8.30am - 4.30pm
Wed	8.30am - 12.30pm 1.30pm - 4.30pm
Thurs - Fri	8.30am - 4.30pm

### Picton Library & Service Centre

2 Dublin Street, Picton 7220  
Ph: 03 520 7493  
[pictonlibrary@marlborough.govt.nz](mailto:pictonlibrary@marlborough.govt.nz)

Mon - Tues	8.30am - 5pm
Wed	9am - 5pm
Thurs - Fri	8.30am - 5pm
Sat	10am - 4pm
Sun	1pm - 4pm

## Awatere and Dashwood rural boil water notice

Water from Council's reticulation network to the Awatere and Dashwood rural areas should be boiled.

It does not currently meet the NZ Drinking Water Standards and may contain bacteria or protozoa that are harmful to human health.

All water used for drinking, food preparation or cleaning teeth should be boiled before use.

Treated water is available at the public taps on Marama Road, outside Seddon School. For further information contact Council on Ph: 03 520 7400.

## Proposed road closures, navigation warnings and alcohol licensing

For the latest public notices, please go to: [www.marlborough.govt.nz/your-council/latest-news-notices-and-media-releases/public-notices](http://www.marlborough.govt.nz/your-council/latest-news-notices-and-media-releases/public-notices)

## A Cuppa with your Councillors

Sounds ward councillors are available for a drop-in chat each month.

The Cuppa with your Councillors sessions are held at Waitohi Whare Mātauranga/ Picton Library and Service Centre - the next one is Wednesday 16 April from 10am until midday.

Councillors can provide advice and help with Council-related issues. Barbara Fauls, Raylene Innes and Ben Minehan are Sounds Ward councillors. Allanah Burgess is the Māori Ward councillor for Marlborough, based in Picton.

**Where:** Waitohi Whare Mātauranga/ Picton Library and Service Centre

**When:** 10am to midday Wednesday 16 April

# Anzac Day Services

## Thursday 24 April

2:00pm Ward War Memorial

## Friday 25 April

6:00am Picton War Memorial

6:30am Seddon War Memorial

9:00am Renwick War Memorial

9:30am Spring Creek Spring Creek Hall

10:00am Havelock Town Hall

10:00am French Pass War Memorial (followed by light refreshments in the Memorial Hall, please bring a small plate to share)

11:00am Rai Valley War Memorial

12:00pm Blenheim Cenotaph, Seymour Square

12:00pm Mary's Bay Homewood Memorial

12:00pm Wairau Valley Community Hall

Contact the Marlborough RSA for the most up to date information.