



Ōkiwi Bay Community Emergency Response Plan 2021



Top tips

Take note of natural warning signs. These are your first and best warning for any emergency.



Note that Marlborough does not have civil defence sirens. Fire sirens are not used to warn of a civil defence emergency.

Stay safe, stay informed

We all need reliable information in an emergency. Here's some of the ways you can get the information you need.

Emergency Mobile Alert (EMA): The Emergency Mobile Alert system enables messages about emergencies to be sent by authorised emergency agencies to capable mobile phones. The alerts are designed to keep people safe and are broadcast to all capable phones from targeted cell towers.

Radio: Listen to the radio for updates and warnings. If you don't have power, use a battery powered radio, a car radio or listen in online.

Marlborough CDEM can broadcast live on Brian FM in an emergency. For Ōkiwi Bay listen to Brian FM on 100.1FM or 105.9

Social media: social media is a great way to share information. Try to stick to sources that provide validated information, such as Marlborough District Council's Facebook or Twitter feeds or information from the National Emergency Management Agency (NEMA).

Antenno: The Antenno app from Marlborough District Council also gives you notifications and alerts about places you care about. It is useful on a day-to-day basis not just in emergencies.

VHF radio: There is a VHF radio at Ōkiwi Bay Fire Station. This enables information to be provided to Marlborough CDEM if there are no other means of communication in an emergency.

Marlborough CDEM can broadcast on Marlborough Nelson Marine Radio Channels 63 and 65. Avoid using these channels in an emergency unless life is at immediate risk; every time you use that channel, someone else can't.

Community response planning

In an emergency, people in Ōkiwi Bay may need to support themselves for up to 10 days before assistance arrives. If our community is well-prepared, we're more likely to be able to look after ourselves and others in an emergency. This plan contains:

- Information about hazards and risks that could affect us
- A short description of Ōkiwi Bay and our people
- Information about assets and resources
- Advice about places where the community can gather (community emergency centre)

The broad geographic area for the Ōkiwi Community Response Plan is on the map below. These are not fixed boundaries, as a specific emergency may impact on a wider area.



Hazards and risks

Like the rest of the Marlborough Sounds, Ōkiwi Bay is at risk from a range of hazards.

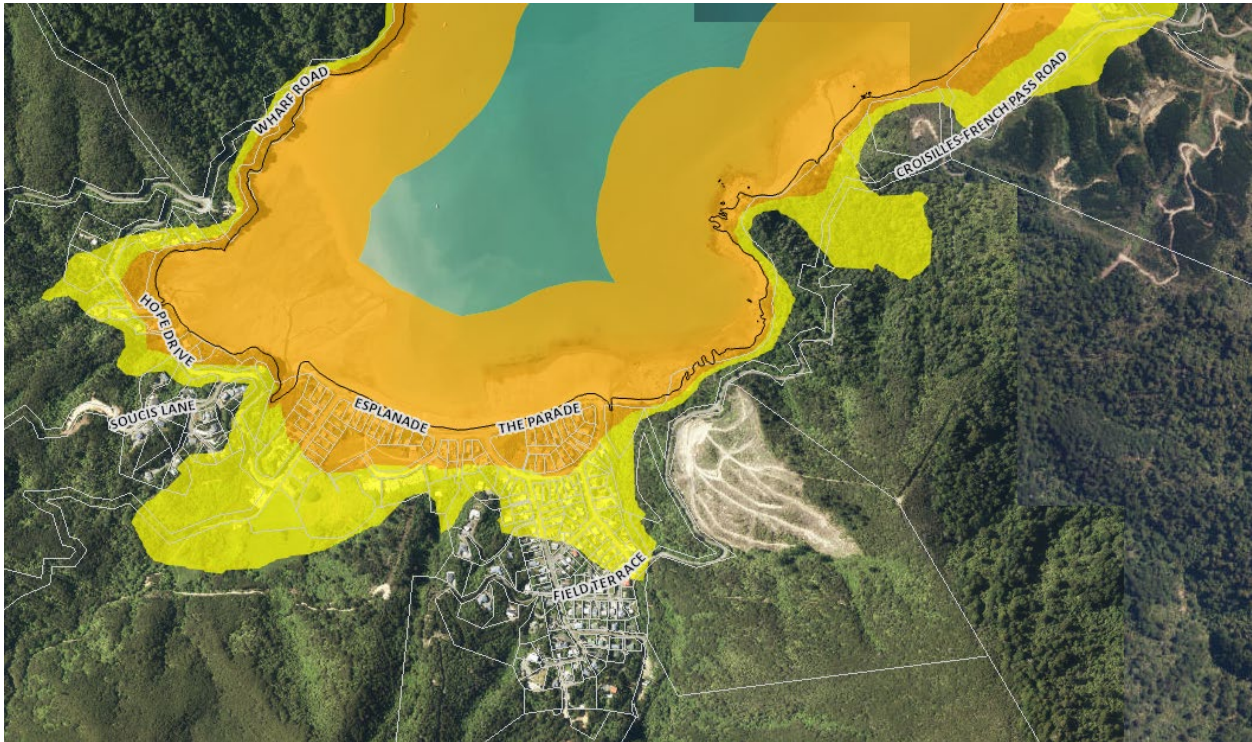
Earthquake

All of New Zealand is subject to the effects of earthquakes. Marlborough has an active earthquake fault system and could be impacted by ruptures on the Alpine Fault and the Hikurangi subduction zone.

An earthquake may also result in landslides and damage to lifelines (power, water, communication, roads) and Ōkiwi Bay could be isolated by road for a long period. Travel by sea could be interrupted by changes to beaches and the sea floor, damaged moorings and jetties and landslides.

Tsunami

Ōkiwi Bay is at risk of direct impact from a tsunami that affects Cook Strait. Tsunami activity can range from disturbed tides and currents or surges, to significant and damaging waves carrying debris, that have the potential to cause catastrophic damage to the bay.



Tsunami inundation zones (source: <https://maps.marlborough.govt.nz/smartmaps>)

Storms and flooding

Weather events such as storms have a significant impact on Ōkiwi Bay, primarily as a result of roading damage, preventing travel in and out of the bay. Slips can also affect properties in the area.

Fire

Ōkiwi Bay is surrounded by native bush and scrub, often growing close to houses. A bushfire could have a significant impact on the bay, closing roads and requiring evacuation of much of the settlement.

Biosecurity

A biosecurity emergency impacting on the marine environment would have a severe impact on Ōkiwi Bay in terms of recreation, marine farming and people's relationship with the marine environment overall.

Other hazards

The impacts of COVID-19 events continue to be felt in Ōkiwi Bay, affecting the local economy as well as individuals. People coming into the bay during periods of lockdown are also a source of frustration to permanent residents.

Other hazards that could affect our region (such as a terrorist attack) are set out in the Marlborough Civil Defence Emergency Management Group's plan (<https://www.marlborough.govt.nz/civil-defence-emergency-management/about-us>)

Ōkiwi Bay people

Ōkiwi Bay is a small town within Croisilles Harbour, reached by road from Rai Valley or by sea. It has a population of just under 200 people. The early Māori inhabitants were primarily Ngāti Koata, with a settlement at Whangarae, adjacent to Ōkiwi Bay. In the late 1890 the bay became accessible by a track to Rai Valley and by 1904 it had become a popular holiday destination.

Approximately 75 people currently live in Ōkiwi Bay, and there are around 200 homes. These include holiday homes, with a high occupancy rate in holiday periods and to a lesser extent, weekends throughout the year. The Ōkiwi Bay Holiday Park also attracts visitors, particularly over summer.

The permanent residents in Ōkiwi Bay are between the age of 50-90, with an average age of 70 years. There is also a 'rolling population' of people who commute between Ōkiwi Bay and their lives and employment elsewhere.

People who could be severely impacted in an emergency

Emergencies affect all of us. Depending on the nature, extent and timing of an emergency some people can be more affected than others. Although it can be hard to generalise, such groups include:

- People with health conditions that require regular, life-saving treatment (Blenheim or Nelson).
- Ōkiwi Bay residents who are temporarily away from their home and unable to return home in an emergency
- People who are visiting Ōkiwi Bay and become stranded by an emergency (people on holiday and day visitors)
- New residents without many resources or local networks and people already under stress
- People who are not prepared to manage with limited resources (e.g. water supplies are often under pressure in summer)

Our resources

Ōkiwi Bay has a range of assets ('goods and services') that can be used to support the community in an emergency. We also have a community ('resources') with a wide range of skills that make us resilient in the face of an emergency.

Assets

This is an indicative list only. Not all these assets will be available or accessible in an emergency and some are dependent on a continued supply of electricity or fuel. The owner/operator of the business or property must be consulted prior to the use of any of their goods or services.

It's important to remember that Marlborough CDEM does not pay for the use of assets in an emergency, unless those assets are specifically commissioned or contracted by Marlborough CDEM.

Assets	Can be used to support...
Helicopter landing pad	Emergency transport in/out
Ōkiwi Bay Store	Local food stocks and food handling expertise
Generators	Emergency power for food storage, medication storage
Individual residents	Maintaining business
Fuel supplies	Maintaining infrastructure and lifelines as well as potential for public use Maintaining business
Heavy machinery	Can be contracted by CDEM or individuals to clear roads, driveways etc
Ōkiwi Bay Volunteer Rural Fire Brigade and ambulance	First responders in an emergency
Boats	Alternative transport, ranging from small private boats to large working vessels.
Civil defence VHF radio	Direct communication with Marlborough CDEM Emergency Operations Centre
Brian FM	Accessible to all Ōkiwi Bay residents; direct broadcasting from Marlborough CDEM
Alternative accommodation	Ōkiwi Bay Holiday Park
AED	Community centre
4WD	Access to hard-to-reach places.
Alternatives to electricity	Including wood stoves, gas cookers, barbeques
Water tanks and septic tanks	May be damaged in an emergency, but some will remain intact and able to be used.

People

It is with the support of people in our community that we can get through and recover from an emergency.

People	Can support...
Practical people	We have a community that is well-connected, with a range of practical skills and caring people.
Emergency responders	Volunteer ambulance and fire crews
Radio operators	People who know how to communicate effectively by VHF radio
Long-term residents	Understanding of the community including community history

Community emergency centres

Depending on the emergency, any safety considerations and the consent of the building owner, we can open a community emergency centre at the Ōkiwi Bay Community Hall.

A community emergency centre is somewhere people can go for information and to be with other people. It is not a civil defence centre and should not be used for emergency accommodation. The hub will have a resource kit and a pavement sign, and will be able to seek advice and support from Marlborough CDEM if they need to.

There is a CDEM radio at the fire station next to the Community Hall and this can be used to provide Marlborough CDEM with critical information in an emergency.

In a fire that prevents people safely leaving the bay, we will meet on the waterfront.

After a long or strong earthquake or if we are warned to evacuate because of the risk of a tsunami, we will evacuate to the top of Mill Road and to Soucis and Kaimiko Roads.

Find out more

Take a look at SmartMaps on the Marlborough District Council website for information about tsunami inundation zones around Marlborough <https://maps.marlborough.govt.nz/smartmaps>

Fire and Emergency New Zealand have good information on their website about protecting homes and rural properties from fire <https://www.fireandemergency.nz/farms-rural-properties-and-rural-businesses> and <https://www.fireandemergency.nz/at-home>

Go to Get Ready for more information about how to get ready for an emergency at home, at work and at school www.getready.govt.nz

Read about the Marlborough civil defence emergency management group and find information that might help you <https://www.marlborough.govt.nz/civil-defence-emergency-management>.