



November 2004



April 2005



November 2005



May 2006

Profile 11: Long Island (b)



November 2002



April 2003



November 2003



April 2004

Profile 12: Clark Point (a)



November 2004



April 2005



November 2005



May 2006

Profile 12: Clark Point (b)



November 2002



April 2003



November 2003



April 2004

Profile 13: Slip Beach (a)



November 2004



April 2005



November 2005



May 2006

Profile 13: Slip Beach (b)



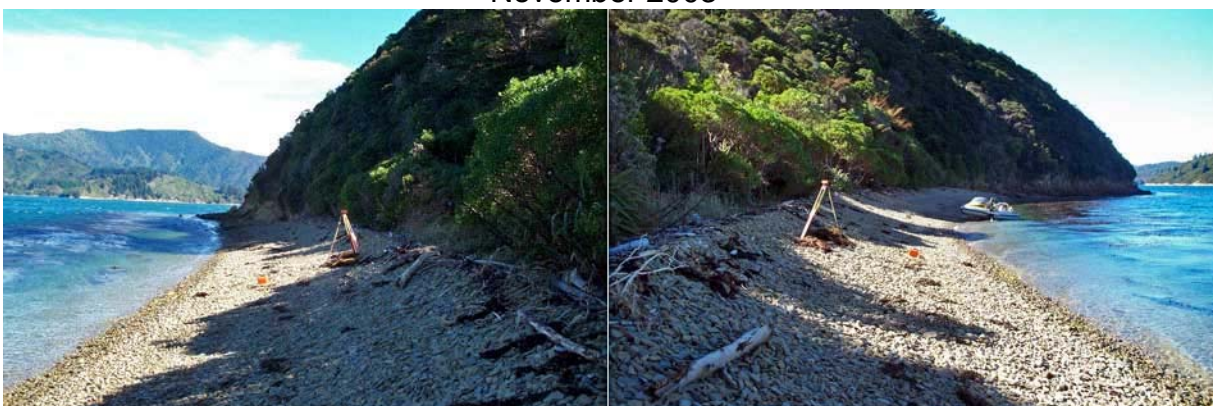
November 2002



April 2003



November 2003



April 2004

Profile 14: Ngaionui Point (a)



November 2004



April 2005



November 2005



May 2006

Profile 14: Ngaionui Point (b)



November 2002



April 2003



November 2003



April 2004

Profile 15: Te Weka Bay (a)





November 2004



April 2005



November 2005



May 2006

Profile 15: Te Weka Bay (b)



November 2002



April 2003



November 2003



April 2004

Profile 16: McMillan's Bay (a)



November 2004



April 2005



November 2005



May 2006

Profile 16: McMillan's Bay (b)



November 2002



April 2003



November 2003



April 2004

Profile 17: McMillan's Side (a)



November 2004



April 2005



November 2005



May 2006

Profile 17: McMillan's Side (b)



November 2002



April 2003



November 2003



April 2004

Profile 18: Dieffenbach West (a)



November 2004



April 2005



November 2005



May 2006

Profile 18: Dieffenbach West (b)



November 2002



April 2003



November 2003



April 2004

Profile 19: Curious Monkey (a)





November 2004



April 2005



November 2005



May 2006

Profile 19: Curious Monkey (b)



November 2002



April 2003



November 2003



April 2004

Profile 20: Patten's Passage (a)



November 2004



April 2005



November 2005



May 2006

Profile 20: Patten's Passage (b)



November 2002



April 2003



November 2003



April 2004

Profile 21: Blumine Island (a)



November 2004



April 2005



November 2005



May 2006

Profile 21: Blumine Island (b)