

**Minutes for Meeting of the
Sounds Advisory Group
to be held at Chateau Marlborough on Monday,
15 August 2022
commencing 9.30 am**

Present: Clr Faulls, Clr Taylor, Monyeen Wedge, Ross Withell, Dave Hayes (DOC), Vic Koller, Eric Jorgensen, Vikki Ambrose (MPI) and Wayne Boustridge.

Attending via Zoom – Linda Booth, Tim Greenhough, Ned Wells, Clr Oddie.

MDC Staff Attending: Oliver Wade, Jake Oliver, Zeke Hoskins, Mike Aviss Pauline Mitterwallner, Alec McNeil and Bernadette Brooklands (Secretary)

1. Welcome

2. Introductions –

- Introduction of nominated new member Wayne Boustridge for Te Whanganui/Port Underwood.
- Introduction of Vikki Ambrose – Fisheries NZ – Fisheries Management.

Apologies – Jodi Milne (MPI), Steve Murrin (Marlborough Roads), Rick Osbourne, Alan Johnson (MDC), Ian Shapcott (Te Ātiawa Manawhenua Ki Te Tau Ihu Trust), Rawinia Puna (French Pass Representative), Poneke Rene, Emma Hopkinson-Young.

3. Correspondence - Resignation of Ken Roush and nomination of Wayne Boustridge for the Port Underwood Residents Association.

4. Confirmation of minutes 20 June 2022.

The minutes of 20 June 2022 were taken as read.

Actions from the previous meeting.

	Action	Person Responsible	Outcome
1	Remote transfer stations across the whole Sounds. Invite Alec McNeil.	Alan Johnson	Completed. See Item 8
2	Clr Taylor to speak on the 3 Waters Submissions in general business at the next Picton Regional Forum.	Clr Taylor	Completed.
3	Enquire with the Council Compliance Team for an update regarding water quality in Lochmara Bay.	Alan Johnson	Ongoing.
4	Invite the new Coastal Scientist Pauline Mitterwallner and Harbourmaster, Jake Oliver to our next meeting.	Oliver Wade/Alan Johnson	Completed. See Item 3
5	Compile list of community group contacts for FENZ.	Clr Faulls	Completed.
6	Speak to Jono Underwood from Biosecurity at MDC for photo of myrtle rust.	Clr Faulls	Completed.
7	Speak to Jono Underwood regarding wattles being spread by gravel movement from Marlborough Roads.	Clr Faulls/Clr Taylor	Completed.
8	Speak to IT regarding SmartMaps showing marine reserves for members of the public.	Clr Faulls	Completed.
9	Receive advise from Council if the group can make a written submissions on the catch limits.	Alan Johnson	Completed.
10	Clr Faulls and FENZ to liaise with Linda Booth regarding communications in event of an emergency.	Darren Crawford (FENZ)/Clr Faulls	Ongoing.

	Action	Person Responsible	Outcome
11	Share the Mussel Restoration Report and the King Shag Report with group.	Ned Wells	Ongoing. See Item 9
12	Climate change update.	Alan Johnson/Richard Conningham	Ongoing item
13	Emissions Report for members to read.	Alan Johnson	Completed. See Action Point 13.
14	Portage update.	Clr Faulls	Ongoing item.
15	What causes the red tide toxin?	Jodi Milne	Completed. See Action Point 15.
16	To follow up the salmon farming best practice guidelines status for Resource Consent.	Jodi Milne/MPI	Completed. See Appendix A.
17	Follow up the slowness of flood damage clean up in Okiwi Bay.	Clr Faulls	Completed.
18	Advise Oli Wade of relevant items of interest for future meetings.	All	Ongoing item.

Action Point 1

- **Remote transfer stations across the whole Sounds.** Invite Alec McNeil (Alan Johnson).
- Completed. Alec is attending our meeting today. See Item 8.

Action Point 2

- **Clr Taylor to speak on the 3 Waters Submissions in general business at the next Picton Regional Forum** (Clr Taylor).
- Completed. See Item 11.

Action Point 3

- **Enquire with the Council Compliance Team for an update regarding water quality in Lochmara Bay** (Alan Johnson).
- Ongoing as Alan an apology today.

Action Point 4

- **Invite the new Coastal Scientist Pauline Mitterwallner and Harbourmaster, Jake Oliver to our next meeting** (Oliver Wade/Alan Johnson).
- Completed. See Item 3.

Action Point 5

- **Compile list of community group contacts for FENZ** (Clr Faulls).
- Completed. Darren from FENZ has agreed to go out to selected Sounds areas and speak to the community groups.

Action Point 6

- **Speak to Jono Underwood from Biosecurity at MDC for photo of myrtle rust** (Clr Faulls).
- Completed and photo provided by DOC and included in previous minutes.

Action Point 7

- **Speak to Jono Underwood regarding wattles being spread by gravel movement from Marlborough Roads** (Clr Faulls/Clr Taylor).
- Completed. Marlborough Roads have the difficulty of how they can successfully remove seeds from the gravel. It was advised that the community can spray/cut or poison the seedlings as they come across them. See Clr Faulls or Clr Taylor if you require further information.

Action Point 8

- **Speak to IT regarding SmartMaps showing marine reserves for members of the public** (Clr Faulls).

- Completed. MDC IT believe there is an app people are using. Oli Wade has also spoken to IT about how best to make these accessible. Some are on the Cruise Guide app. It will be ongoing work to keep sites updated. <https://cruiseguide.co.nz/>

Questions/Answers

- Moneyeen asked if the current no take areas will include Double Cove. Smart Maps do not work offline but the Cruise Guide does, and this shows the marine site locations which includes Double Cove.

Action Point 9

- **Receive advice from Council if the group can make written submissions on the catch limits** (Alan Johnson).
- Completed. It was noted after the previous SAG meeting that SAG is unable to formally prepare submissions. An email was sent to all members advising them of this and providing the links from MPI to make their own submissions.

Questions/Answers

- Eric made a personal submission and not on behalf of the group.

Action Point 10

- **Clr Faulls and FENZ to liaise with Linda Booth regarding communications in event of an emergency** (Clr Faulls).
- Ongoing.

Action Point 11

- **Share the Mussel Restoration Report and the King Shag Report with group** (Ned Wells).
- Ongoing. Ned will share this once completed. See Item 9.

Action Point 12

- **Climate change update** (Alan Johnson).
- This is an ongoing agenda item. No update today as Alan an apology.

Action Point 13

- **Emissions Report for members to read** (Alan Johnson).
- Completed. Copies provided to members at today's meeting. See link below to read online. <https://www.marlborough.govt.nz/environment/climate/climate-change/what-is-marlborough-district-council-doing>

Action Point 14

- **Portage Update** (Clr Faulls).
- Ongoing. Nil further update from last meeting. The MDC Environmental Monitoring staff are still investigating. Access has been a problem due to storm damaged roads.

Action Point 15

- **What causes the red tide toxin?** (Jodi Milne - MPI)
- Completed. Jodi provided the following update after our last meeting which was emailed to members.
- The food safety team has suggested the following link in the first instance <https://www.mpi.govt.nz/fishing-aquaculture/recreational-fishing/where-unsafe-to-collect-shellfish/what-are-toxic-algal-blooms/>

The web page notes the following causes of algal blooms:

Algal blooms usually occur naturally when wind and water currents are favourable. Causes can include slow water circulation or unusually high water temperatures. Some blooms have happened after extreme weather events like cyclones, floods, or drought.

Sometimes algal blooms are caused by overfeeding. This happens when nutrients (mainly phosphorus, nitrogen, and carbon) build up at a rate that "overfeeds" algae in the environment. Nutrient pollution from human activities can make the problem worse. This leads to blooms occurring more often.

The Team also advises that the causative species of the PSP blooms in Pelorus Sound - *Alexandrium pacificum*, form cysts (much like a seed) and can lay dormant in the sediment for years. With the right environmental conditions, they can germinate and form blooms again. The conditions leading up to this recent bloom were La Nina conditions with consistent south easterlies and a heavy rainfall.

Cawthron is also doing research on predicative modelling. Please let Jodi know if you would like her to

approach the scientist involved if he is available to present at the next SAG.

Action Point 16

- **To follow up the salmon farming best practice guidelines status for Resource Consent** (Jodi Milne).
- Completed. This was emailed to members after our last meeting. The Aquaculture team has provided the update of the out-of-cycle review of Best Management Practice guidelines for salmon farms in the Marlborough Sounds Part 1: Benthic environmental quality standards and monitoring protocol (Version 1.1 January 2018). See **Appendix A**.

Action Point 17

- **Follow up the slowness of flood damage clean up in Okiwi Bay** (Clr Faulls).
- Completed. Clr Faulls will contact Tim Greenhough after this meeting. Clr Faulls advised there is another rain event predicted this week. Ring your Councillor or Marlborough Roads if you have any roading issues.

Questions/Answers

- It was noted by Moneen that it is not just the roads but also slips on people's property that was also an issue.
- Clr Taylor reminded people to download the Antenna App for roading updates. Eric added that Antenna is a phone app so in areas where there is no cellphone coverage, receiving updates is difficult. Eric asked if a better system such as what Marlborough Lines has would be a more suitable way for communications to be made. Clr Faulls and Clr Taylor will follow up with Marlborough Roads and Marlborough Lines. **Action Point Noted.**

Action Point 18

- **Advise Oliver Wade of relevant items of interest for future meetings.** (All)
- Ongoing item. Reminder from Oliver to email him items of interest for the Nautical Science Team to speak on for our next meeting in November. Oliver.Wade@marlborough.govt.nz

1. MPI Update – (Vikki Ambrose). Also see Appendix A

- Welcome to Vikki who joined the Fisheries NZ team two months ago. Vikki also has a coastal science background and provided the following on her role.

I am in the Coastal Planning Team where we look to provide leadership engaging with Regional Councils, Unitary Councils, Local Government New Zealand, the Department of Conservation, and others on Resource Management Act (RMA) coastal planning processes relating to integrated management of inshore fisheries at a local scale. To support early engagement with Councils and others we can provide fisheries information to inform them of Fisheries NZ's role under the Fisheries Act, including how we manage fishing and its impacts in a region, and how we deliver the Crown's obligations to Māori under the Fisheries Settlement. We hope to engage to help ensure that any RMA fisheries controls are based on good evidence, and are well considered, including consideration of the most appropriate tool to use, eg RMA vs Fisheries Act etc. We wish to encourage Councils to consider the effects other Council managed activities have on fisheries resources (such as land-based effects eg sedimentation), and to inform them of Fisheries NZ's role under the Fisheries Act. I am also involved in considering climate change and fisheries management, and habitats of significance and their potential protection, working as part of wider internal groups with the portfolio holders.

- Vikki gave a verbal update from Jodi Milne at MPI on the sustainability measures update which are now in the final stages to prepare the report for the Minister for his reply due on 1 October.
- See link to Aotearoa Circle. There are links to their strategy, climate change, marine, freshwater, biodiversity, land and soil, and sustainable finance domain documents on the first page, and a link to the seafood sector adaptation strategy implementation is under the workstreams tab up along the top of the first page. <https://www.theaotearoacircle.nz/>

Questions/Answers

- Oliver Wade asked about the new habitat of significance consultation report. Vikki will come back to the group on this. **Action Point Noted.**

- Oliver noted the report is about fisheries intent to manage habits of significance for fish breeding, spawning etc. This is on the fisheries consultation page on their website and the public are able to make submissions. See link below.
<https://www.mpi.govt.nz/consultations/guidance-for-identifying-a-habitat-of-particular-significance-for-fisheries-management/m>

- Viki also noted the habitats of significance consultation report opened last year and closes for feedback 18 November 2022 and is available on the link above. Here is a summary for people's interest of what the report contains:

Fisheries New Zealand is progressing towards ecosystem-based management – an integrated approach to managing competing values and uses of marine resources, while maintaining the ecosystems that support them. This progress is supported by a number of initiatives delivered under the oceans and fisheries work programme and Te Mana o te Taiao – Aotearoa New Zealand Biodiversity Strategy.

One of these initiatives is our proposed draft guidelines for identifying a habitat of particular significance for fisheries management. The guidelines will inform habitat identification and provide greater transparency on our fisheries management advice.

The draft guidelines will:

- provide an overview of the environmental principle of section 9c of the Fisheries Act 1996
- provide a working definition for habitats of significance
- note that we will work with tāngata whenua on how habitats of significance of taonga species could be identified
- identify information that will be used to identify habitats of significance
- outline a process for identifying habitats of significance
- outline a process for identifying potential for adverse effects on habitats of significance
- propose how habitats of significance will be formally documented and notified
- outline processes to prioritise and support ongoing information gathering and habitats of significance identification
- identify research underway that will support future habitats of significance identification.

The draft operational proposals present how Fisheries New Zealand proposes to:

- take into account that habitats of significance should be protected in fisheries management advice
- identify matters that will influence how we take section 9c of the Act into account
- consider non-fishing stressors on habitats of significance.

10.30 Morning tea

2. Marlborough Road Update – (Steve Murrin) – via written report

- June and July have been very busy months for the Marlborough Roads Team as well as the Marlborough Roads Recovery Team.

The effects of Covid and the winter flu are still causing disruptions particularly in the recovery team.

The easterly storm event that hit the district on 12 July again caused damage and disruption across the network.

Serious flooding issues occurred along the eastern side of the district. The Flaxbourne area received a huge amount of rainfall that caused surface flooding and minor slips. The flooding also caused damage to the Tachells Road bridge.

In Awatere there was several slips, and surface flooding, including the closure of State Highway 1 at Dashwood. Surface water across the highway was around 0.5m deep. The highway was closed from midday until around 7.00 pm.

Around the Lower Wairau several roads were closed due to flooding. These being State Highway 63

at the back of Renwick, Old Renwick Road, Jacksons Road and Hammerichs Road fords. Vickerman Street and Morgan's Road were closed due to large flows in Rose's overflow overtopping the roads. Also, State Highway 6 (Nelson Street) was closed at the hollow by the Marlborough Hotel.

Luckily the Sounds were not hit too badly, but there was a large slip on Kenepuru Road at Cowshed Bay and a drop out at Black Rock.

A big issue we have around the Wairau and Lower Awatere is run off from Vineyards. When vineyards were developed a number of the natural water courses were filled in, ground levelled up and vineyards planted.

This has left nowhere for drainage, and a lot of water is directed to the road corridor, which is not capable of receiving these amounts of water. Some major flooding issues were encountered across the district due to vineyard runoff.

The easterly weather also brought some big seas to French Pass, this broke a pile on the hammerhead section of the jetty as well as damaging the two steel landing gantries. Our Engineers WSP are currently designing repairs.

The wet weather has certainly brought about several potholes across the network. Cyclic crews are dealing with these the best they can.

Generally logging trucks have behaved and kept off the roads during the wet weather, however we have had to deal with issues on Kenningtons Road and Port Underwood Road.

Questions/Answers

- Clr Faulls noted that roading is an ongoing issue due to the weather conditions.
- Wayne noted that the Port Underwood Road is closed at least twice a week due to slips. Some residents who cannot get into work have lost their wages for that day due to the amount of time they have had to take off work. It was also noted that the Port Underwood community wanted to pass on their thanks for the roading teams for all the work they do.
- A general thank you to Marlborough Roads for the work they continue to do even though the roading crews are under pressure. Thank you for the crews clearing out the drains in the Moetapu Bay area.

3. Introduction of new Coastal Scientist Pauline Mitterwallner & Harbourmaster, Jake Oliver

- Welcome to Pauline and Jake to their first Sounds Advisory Group meeting. Both Pauline and Jake introduced themselves to the group.
- In August last year, Jake finally decided to "come ashore", accepting a position as Deputy Harbourmaster in Hawke's Bay. This role came after 13 years of an ocean-going career during which he achieved Master Mariner; the highest certification obtainable. You can read the full article on Jake and his career on the MDC website here <https://www.marlborough.govt.nz/your-council/latest-news-notice-and-media-releases/news?item=id:2i98vln7p1cxby5ty87i>
- Pauline has a PhD in Marine Biology and a Masters in Marine Biology. Pauline has worked in Thailand and French-Polynesia from 2014 to 2017 as a Project Scientist and Field and Laboratory Assistant followed by her PhD and Research Assistant at the University of Wellington.

Questions/Answers

- Moneen asked if Pauline knew about the water quality in Lochmara Bay. The water quality is an ongoing noted item for Lochmara Bay. See link below to the 15 June 2022 Environment Committee Meeting for the Water Quality Report.
<https://www.marlborough.govt.nz/your-council/meetings?item=id:2g1ed0zwl17q9ssek8dg>

4. Presentation on the Marlborough Sounds Common Passage Plan Project (Jake Oliver - Harbourmaster) - see Appendix B

- Jake's presented the Sounds Common Passage Plan Project to the group. The plan is in consultation with the Harbourmaster, Port Marlborough, Interislander and StraitNZ. This project is to plan the required water space for commercial shipping within the Sounds and navigation risk assessments from Tory Channel/Kura Te Au entrance through Queen Charlotte Sound/Tōtaranui to Picton/Wāitohi and back out to sea. See Appendix B for the full presentation.

Questions/Answers

- Vic asked where does Havelock fit into the new Common Passage Plan? Jake noted that the Queen Charlotte Sound/Tōtaranui and Tory Channel/Kura Te Au plan will be completed first before other areas are looked at.
- Jake noted that the Harbourmasters office will be conducting some testing on the navigation aids in Havelock. He will feedback this to the group once all the data has been compiled. **Action Point Noted.**
- Monyeen asked if the passageway noise would interfere with the whale's sonar or route that they take? Dave Hayes from DOC advised that this would be a good conversation to have with the Harbourmasters office. **Action Point Noted.**

5. Coastal Science Update (Oliver Wade - MDC)

- Oliver discussed the parchment worm issue in the Sounds area. See below from the MDC Environment Committee Meeting Minutes for 21 July 2022:

There is growing concern amongst the Marlborough Sounds community about the increasing distribution and biomass of a parchment worm on the seafloor of Tōtaranui/ Queen Charlotte Sound. This parchment worm has now been identified by NIWA taxonomists as likely to be *Chaetopterus chaetopterus-A*. This worm was previously only recorded in the Hauraki Gulf. For decades there has been a much smaller worm, *Chaetopterus chaetopterus-B*, known from various places in the Marlborough Sounds, including Te Hoiere/Pelorus Sound, Port Underwood and Croiselles Harbour. *Chaetopterus chaetopterus-A* is a cryptogenic species meaning that its origin is unknown. Whether it is a native to New Zealand or an exotic species from overseas will likely never be known. Both species are epifaunal *Chaetopterus* which live in colonies of entangled tubes on the seabed. *Chaetopterus-A* tends to have more upstanding tube ends, free of the bottom sediment. MDC staff have lodged with biosecurity New Zealand for a range extension of the species *Chaetopterus chaetopterus-A*.

The main concern of community members is that the *Chaetopterus chaetopterus-A* is taking over the seafloor of Tōtaranui/Queen Charlotte Sound to the detriment of other species that live there especially scallops. *Chaetopterus chaetopterus-A* can form dense mats of tangled tubes. In places where it has formed a dense mat, it does seem likely that it will displace the species that previously lived there.

The key question is what action Council could take. From a biosecurity standpoint, there is no practical response available. Once a species has become established in an area and as widespread as *Chaetopterus chaetopterus-A* is in Tōtaranui/ Queen Charlotte Sound, it is impossible to intervene in any way, to either eliminate or manage spread. Furthermore, several other species in the *Chaetopterus* family are able to grow from a single fragment so even if management was attempted on a lesser infestation, any attempt to remove or destroy the *Chaetopterus chaetopterus-A* could have unintended consequences.

In terms of a science response, MDC staff are looking to support researchers working on *Chaetopterus chaetopterus-A* in the Sounds. We will also be monitoring its extent through our significant marine site and other benthic monitoring programmes.



Questions/Answers

- Moneyeen asked if there was a possibility that residents could do monitoring by plotting where the worm is seen and take photos, if possible, by using Citizen Science. Oliver advised the Council does not have the capability for that at present.
- Vic asked where it is located. Oliver advised it has been seen from East Bay to the Grove Arm in 5 to 20 meters of water. If the worm is broken up, it will spread and make the matter worse. **Do not break the beds up.**

6. Biodiversity NZ Programme Update (Mike Avis – MDC) – See Appendix C

- The Significant Natural Areas project is how Council fulfils its role to manage indigenous biodiversity on private land, which is a requirement under the Resource Management Act. It involves working closely with landowners to identify and describe significant sites on their land, and then to monitor those sites and assist with improving or maintaining their condition. 771 sites have been identified over the last 20 years. Some of the sites were identified in a DOC run PNA process and they are also considered by MDC to be SNAs.

SNAs on private land can be covenanted by the landowner if they choose. The covenant stays on the title in perpetuity, and this does not change if the land is sold. Covenanted land can qualify for rate reduction.

Questions/Answers

- It was asked whether the MDC works with QEII Trust. Mike noted that the QEII is the best organization for establishing and monitoring covenants and he works closely with QEII.
- Moneyeen asked if the wild pigs on Arapaoa Island are under control. It was noted that they were not, although some landowners had expressed a desire to work together toward this outcome.
- SNA can only be completed when owners of a property request an SNA.

12.40 pm - A short break was taken for lunch

7. Working for Nature Grant Scheme (Zeke Hoskins - MDC) – See Appendix D

- There are still two weeks left of the funding application time ending 31 August. See **Appendix D** for the presentation.

Questions/Answers

- Moetapu Bay residents are wanting possums dealt with. Clr Faulls to provide Vic with name of person to speak to about the traps. **Action Point Noted.**
- Clr Faulls to enquire if DOC, and Rata Foundation can speak with JfE to work cohesively for pest control. **Action Point Noted.**

8. Remote Transfer Stations (Alec McNeil - MDC)

- The refuse centre services contract has gone to JBL Environmental, and they will have the contract from 1 June 2024. They will also work with a contractor to go out into the Sounds and do a whiteware amnesty or oil waste collection each year.
- The waste management and minimisation contract has gone to Waste Management (NZ) Limited.
- Due to proposed changes in levels of service under the waste management and minimisation contract the community will be consulted in November 2022. The proposed changes are:
 - Expansion of the kerbside collection service area to include Grovetown, Havelock, Rarangi, Renwick, Rai Valley, Spring Creek, Tuamarina, Seddon, Wairau Valley, and Ward
 - Introduction of wheelie bins for rubbish and recycling (excluding glass)
 - Recycling crate for glass only
 - Wheelie bins to be serviced on an alternate fortnightly basis – so recycling one week then rubbish the following week
- Coin skips and rural community recycling bins will be removed and be replaced with a remote transfer station. These will be in the same location as the current coin skips if possible.
- All existing transfer stations will remain.

- The waste calculator will be on the MDC website.
- A statement of proposal capturing all the relevant information for the community, including cost will be issued as part of the community consultation in November 2022.

Questions/Answers

- Will the amnesty for waste collection be at the same time for all of the Sounds? Alec advised that the area is too large so a calendar will be made to inform residents when their area has a turn. This new yearly collection is not only for the Sounds but District wide. The Calendar will begin rolling out in 2023.
- Moneen ask if boat access only bays would get a community bin. Cougar Lines will be doing a trial where bins are dropped off and collected again. There was also an article in the Marlborough Express dated 5 August.
- Is this for domestic use or also for business? This is for domestic, and business will be collected at the same time while in the area.
- Are the new transfer stations going to take green waste? Alec advised that currently there is no way to collect green waste for now apart from the drop off areas at the Picton and Blenheim waste sites.
- Will rate payers be paying for the transfer stations? Alec advised that all rate payers already pay for rubbish in their rates.
- Will the glass at the transfer stations need to be sorted into colours? Yes, they will.

9. MFA Update (Ned Wells)

- Pelorus mussel restoration and the king shag project have been completed. See here for the Mussel Bed Restoration Project updates and YouTube video. The latest report is dated June 2022.
<https://www.marinefarming.co.nz/mussel-bed-restoration/>
- The green lipped mussel trial areas were better in softer sediment areas. Further trials will be needed.
King Shag – 3 years of work with Mike Bell who is the lead investigator. The report will be finalised and on the MFA website early September. The key findings are that the population is fairly stable, mussel farms are neutral and do not appear to be harmful to the shags. The biggest risk to king shags is climate change and further banding work will be carried out in the future.
https://www.marinefarming.co.nz/site_files/24792/upload_files/WML-KingShagResearchProject-YearOneReport.pdf?dl=1
https://www.marinefarming.co.nz/site_files/24792/upload_files/SILMFA-KingShagResearchProject-YearTwoReport.pdf?dl=1
<https://www.marinefarming.co.nz/king-shag-project/>
- Note from Ned to advise if you see a broken free float or a bundle of floats or ropes etc to advise MFA. There is a link on the MFA website to report siting's. <https://www.marinefarming.co.nz/float-report/>

Questions/Answers

- Clr Faulls asked what is next now the King Shag and Mussel Restoration are completed? Ned noted that they would like to carry on further with the mussel restoration project.
- Eric noted that the MFA newsletter is very good.

10. DOC Update (David Hayes)

- Rain has disrupted work programmes over the winter. The Queen Charlotte Track in particular has needed a bit of work to repair water damage.
- The Department is undertaking a reset of its senior management and the portfolios that they have. This has not directly involved us in the Operations teams.
- The Rangers on Takapourewa/Stephens Island have completed their contract and we are in recruiting mode again.
- Two toilet blocks at Pelorus Bridge have been totally refurbished.
- Part of the Momorangi campground sewerage system has had an upgrade.

- Plans are afoot to build new toilets, including a new dispersal field at Ngakuta Bay. This should be operational by the end of Summer.
- There is a reserve administered by DOC in the heart of Havelock which has the old school that that notable old-boys, Earnest Rutherford and William Pickering, attended. A full historic assessment has been completed and work is being undertaken at the moment to develop a maintenance plan for its ongoing upkeep.
- The King Shag Working Group, led by MFA, have received a report which contains the results of research carried out on the birds over several years. This has significantly increased what is known about King Shags and provides information that can be used for their ongoing management.
- The Te Hoiere Project is continuing to go well. The Trust is in the process of getting additional trustees from the Community.
- After two years of monitoring, no further plague skinks have been found in Havelock. This will make this site one of the few where eradication of this pest has been achieved. Further trapping will occur over this Summer and a skink detection dog will make a couple of visits.
- Two new staff will be joining our Heritage and Visitor Team following earlier retirements. One will be in Havelock and another in Picton.
- Overall, it's great to see the continued great work by so many community led conservation groups in the Sounds.

Questions/Answers

- Is the sedimentation just from forestry? No not just forestry, it can come from other sources such as stream bed erosion and other land disturbance as well. Clr Faulls noted there was a forestry meeting a few weeks ago. The Forestry group are very open to working with the community and to being involved in the Te Hoiere Project. The forestry companies do need to comply with their Resource Consent conditions. Clr Faulls to find out further information on the forestry plans at the upcoming Kaiuma meeting. **Action Point Noted.**
- Moneyeen asked about sea walls on DOC land where erosion is occurring at the foreshore area.
<https://www.marlborough.govt.nz/environment/biodiversity>
<https://www.doc.govt.nz/nature/biodiversity/aotearoa-new-zealand-biodiversity-strategy/>

11. 3 Waters Update (Clr Taylor)

- Councillor Brooks is submitting the Councils submission in Nelson at the Select Committee meeting today (15 August 2022) and the Mayor will speak on the Councils behalf in Wellington next week.
<https://www.marlborough.govt.nz/your-council/three-waters-reform-proposals>

12. TOR (Alan Johnson - MDC)

- It was noted that due to Alan being an apology today that this will be carried over for the next meeting.

Questions/Answers

- Eric would like the TOR to be first on the agenda from now. **Action Point Noted** for ongoing agenda item.
- Clr Faulls also noted that presentations can be emailed out to the group a week prior to the meeting. **Action Point Noted** for ongoing agenda item.

13. Sounds Representatives Updates

Rangitoto ki te Tonga/D'Urville Island – Poneke Rene - Absent.

Kenepuru & Central Sounds Residents Association (KCSRA) - Ross Withell

- Ongoing weather-related roading issues. Ross would like the information to be communicated in a timelier manner on any closures etc.

Sustainable Seas – Eric Jorgensen

- Please contact Eric if you have anyone that would be a good candidate for the upcoming Cawthron Marlborough Environment Awards. You can view the awards website here <https://www.cmea.org.nz/>

- If you would like a copy of the newsletter, let Eric know and he will arrange a copy for you. You can also view the Sustainable Seas Newsletters on their website (see link below). The newsletters are published 2-3 monthly and the website also has archived newsletters. Also see **Appendix E** for a copy of the 3 August 2022 newsletter
- Eric spoke on working on the mussel project work and also mapping where shellfish have been depleted. You can read the report here
<https://www.sustainableseaschallenge.co.nz/our-research/marlborough-sounds-regional-study/>
<https://www.sustainableseaschallenge.co.nz/news-and-events/newsletter-archive/>

Moetapu Residents Association (Mahau Sound Outward Bound) – Vic Koller

- 70 out of 140 residents on Moetapu Road have had issues with ungulate. They formed a community group to organise this, and the money has been raised and \$22 thousand dollars is available for DOC and trap and trigger to do the control work.
- Thank you to the Recovery Team and Steve Murrin for the ongoing roading works.

Marine Farming Associations – Ned Wells

- Nil further as update given at Item 9.

Queen Charlotte Residents Association – Monyeen Wedge

- Monyeen spoke about the water quality in Lochmara Bay. This is an ongoing item.
- Monyeen asked where the local voting areas will be? Clr Taylor advised Monyeen that the local body elections are postal votes only.
- Monyeen reported that Brain Strong from the Marlborough Community Vehicle Trust Board has sadly passed away.

Port Underwood Residents Association – Wayne Boustridge

- Ken has resigned from this role after 20 years. Clr Fauls and Alan Johnson have sent letters expressing their gratitude to Ken for his long service on behalf of SAG. Wayne is the new representative.

Forestry Representative – Rick Osbourne – Apology today

French Pass Residents Representative – Rawinia Puna - Apology today

Duncan Bay Residents Association – Linda Booth

- Nil further to add.

Outer Pelorus - Emma Hopkinson-Young – Absent

Central Pelorus (Hopewell) - Lynley Perkins

- Lynley also spoke on the continuous roading issues and asked if there would be a way for community jetties to be built in the Sounds for residents who cannot get out on the road, or they are boat access only but elderly and can no longer drive a boat.
- Can DOC give advice on plantings and provide a list of suitable plants that the community could plant to help with the large amount of erosion occurring with the rain. **Action Point Noted.**

Okiwi Bay – Tim Greenhough

- A barge is still on the beach for 12 months. When will this be removed?
- It has been 7 months since the water went through the Hall. When will this be addressed? Clr Fauls noted this has gone back to the insurance company. Clr Fauls will email the latest information to Tim. **Action Point Noted.**

14. General Business

Meeting remuneration and travel expenses for SAG members (Clr Taylor)

- Clr Taylor spoke on the matter that has been brought up previously by members and the new nominee for the French Pass. This will have a final say with Council as this does come out of budget. Please

provide your thoughts on this and email your comments to Bernadette and she will compile the replies which will then go to Clr Taylor and Alan Johnson for discussion. **Action Point Noted.**

Questions/Answers

- Wayne asked if the TOR needs to be finalized first and then the remuneration to follow? Clr Taylor noted that, however the member who has asked for remuneration is looking at the cost of traveling due to high fuel costs.
- Linda noted that there is refund for travel of members. Linda will find her copy and share with Clr Faulls. **Action Point Noted.**
- Clr Oddie announced to the group that after 12 years he is no longer going to be on SAG as he is not standing at the upcoming elections, and thanked members for their time over the years. Clr Faulls and Clr Taylor thanked Clr Oddie for his work and commitment to Council and wished him well for his retirement.

Action Points from the meeting.

	Action	Person Responsible
1	Enquire with the Council Compliance Team for an update regarding water quality in Lochmara Bay.	Alan Johnson
2	Clr Faulls and FENZ to liaise with Linda Booth regarding communications in event of an emergency.	Darren Crawford (FENZ)/Clr Faulls
3	Share the Mussel Restoration Report and the King Shag Report with group. Link to the Mussel Bed Report June 2022 report has been added to the minutes https://www.marinefarming.co.nz/mussel-bed-restoration/	Ned Wells
4	Climate change update (ongoing item)	Alan Johnson/Richard Conningham
5	Portage update (ongoing item)	Clr Faulls
6	Follow up with Marlborough Roads and Marlborough Lines regarding their notification system which may be a better way to communicate roading updates to areas without cellphone coverage.	Clr Faulls/Clr Taylor
7	Advise Oli Wade of relevant items of interest for future meetings.	All
8.	Share the Significance Consultation Report.	Vikki Ambrose (MPI)
9	Provide results of the testing on the navigation aids testing in Havelock.	Harbourmaster
10	Will the noise from the passageway in the Channels interfere with the whale's sonar or the route they take into the Channels?	Harbourmaster/DOC
11	Can DOC, and Rata Foundation can speak with JfE to work cohesively for pest control.	Clr Faulls
12	Provide Vic with name of person to speak about the possum traps.	Clr Faulls
13	Find out further information on the forestry plans at the upcoming Kaiuma meeting.	Clr Faulls
14	TOR to be an ongoing agenda item and listed as the first item on the agenda.	Bernadette (Secretary)
15	Presentations to emailed out to members a week prior to meetings.	Bernadette (Secretary)
16	Provide your thoughts on meeting remuneration and travel expenses for SAG members to Bernadette.	All
17	Advice or a list of suitable plantings that the communities could plant to help with the effects of erosion from the rain.	DOC
18	Email the latest information to Tim re the Okiwi Bay Hall insurance assessment.	Clr Faulls
19	Share copy of reimbursement paper with Clr Faulls.	Linda Booth

Meeting closes at 2.55 pm. The next meeting will be on the 14 November 2022. Location TBC.

An update of the out-of-cycle review of Best Management Practice guidelines for salmon farms in the Marlborough Sounds Part 1: Benthic environmental quality standards and monitoring protocol (Version 1.1 January 2018)

6 July 2022

The Best Management Practice (BMP) guidelines is a guidance document to inform the development and implementation of benthic monitoring of salmon farms in the Marlborough Sounds, New Zealand. The standards were developed in an integrated working group environment, with representation from: Marlborough District Council (MDC), New Zealand King Salmon, the Sounds Advisory Group to MDC, Cawthron Institute, National Institute of Water and Atmospheric Research and the Ministry for Primary Industries/Fisheries New Zealand. The aim of the BMP guidelines is to provide consistent and clear requirements for the benthic monitoring and management of existing farms, based around an agreed set of environmental quality standards with accompanying rationale.

The guidelines were first published in 2015 with the intention of being formally reviewed five-yearly after their finalisation. During the review cycle of the BMP in 2019, some new monitoring technologies were discussed that had potential for integration into the BMP guidelines. Additionally, after several years of implementation, some aspects of the guidelines were identified that would also benefit from revision.

In response to this, the Ministry for Primary Industries contracted the Cawthron Institute to undertake a desk-top assessment to determine the relative importance of these issues and whether they warranted an out-of-cycle review. The review of issues suggested that an out-of-cycle revision of the BMP guidelines was warranted; the most pressing and important changes are summarised below:

1. Use of a bacterial-based metabarcoding biotic index (b-MBI) by sampling eDNA for deriving enrichment score (ES) – Currently benthic macrofaunal sampling is undertaken beneath and around farm sites to derive an ES to assess farm compliance. The development of eDNA technology now provides a faster, cheaper and more accurate alternative to macrofaunal sampling that is ready to be implemented at farm sites in the Marlborough Sounds. b-MBI will be used as a proxy for macrofauna.
2. Clarification that bacterial mats are not used as sole indicators of ES5
3. Clarification on the definition of the ES5 threshold - Enrichment Stage 5 is defined by the point of peak macrofauna abundance. This point on the enrichment spectrum is important because further enrichment leads to rapid decline in abundance. There is concern that undue weight may be applied to single variables. Therefore, there is a need to ensure that the threshold is estimated based on a combination of variables.
4. Variable feed discharge models – Some salmon farms in the Marlborough Sounds now employ different feed strategies. As the level of peak feed inputs may vary across the calendar year, timing of monitoring may need to vary to reflect the times of peak feed input.
5. Clarification on how ES is calculated
6. Clarification on intent around the use of ES (i.e., ES as sole indicator vs. individual variables for determining compliance)

7. Inclusion of Type I monitoring strategy
8. Definition of “patchy” in regard to bacterial mats

The working group met on 29 June 2022 to listen to a presentation on the new eDNA technology and review the above items for their inclusion into an updated version of the BMP guidelines. All items listed above have been accepted by the working group and will be written into the updated BMP guidelines. The group had representation from those agencies previously mentioned but is yet to have any community representation. Rob Schuckard previously represented the Sounds Advisory Group but as of 29 June 2022, Eric Jorgensen became the new representative.

Next steps

Working group members are currently providing suggested wording changes to the BMP guidelines to MPI. The proposed new text will be provided in the next two weeks and the BMP guidelines will be updated and finalised after review and approval from the working group.

The working group also discussed the requirement for an implementation plan for the phasing in of the new eDNA sampling method. This plan will outline the monitoring methodology and whether or not macrofaunal sampling will continue alongside eDNA sampling as it is phased in to further validate the method; these discussions are ongoing.



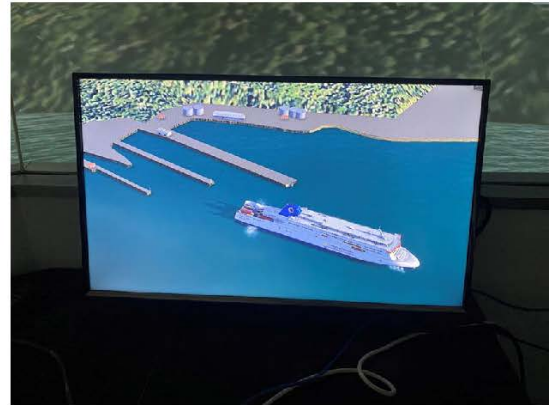
Marlborough Sounds Common Passage Plan Project

Introduction

- The MDC Harbourmaster in consultation with Port Marlborough, Interislander and StraitNZ have begun the process of developing a common passage plan for the passage from Tory Channel/Kura Te Au entrance through to Picton and back out to sea.
- The genesis of this project stems from a need to define the required water space for commercial shipping within the Sounds and from separate navigation risk assessments conducted for MDC and Interislander.
- As part of this project the Harbourmaster has commissioned and built a ship simulator model of the new Interislander ferries.
- With this presentation over the next 10 – 15 minutes, I intend to demonstrate the Transit Analyst system, overview the common passage plan concept, how the MDC network aids the system, and overview the ship simulation component of the work conducted.

Ship Model

- Modelled on the designs as supplied for the new Interislander ferries.
- Able to with the current data available to act in the simulator as a real ship in terms of movement through the water space and be affected by wind, tide, sea conditions and currents.



Terminology

1. Navigation track or corridor – The area where the vessel will conduct her planned passage, this area consists of safe navigable water.
2. Reserve area – The area between the defined track or navigable corridor and no-go area, which still consists of safe water. However, would normally only be used in exception for example collision avoidance, adjustment of a turn due to prevailing conditions.
3. No go area – The area outside of the reserve area where the vessel should not be at any time.

Transit Analyst

The Harbourmaster has been working with the company – Transit Analyst to look at the tracks and water space consumption by both the ferry companies and other commercial vessels calling to Port Marlborough.

Transit Analyst provides a service where it is possible to pull ships tracks from stored AIS (automatic identification system) data and display this both as a full track and as a replay function. Weather sensor data is integrated into this data set as well, so an appreciation of these influences on a vessel's passage can be considered.

The data feeds for AIS and weather into the systems are using parts of the wider MDC network and infrastructure.

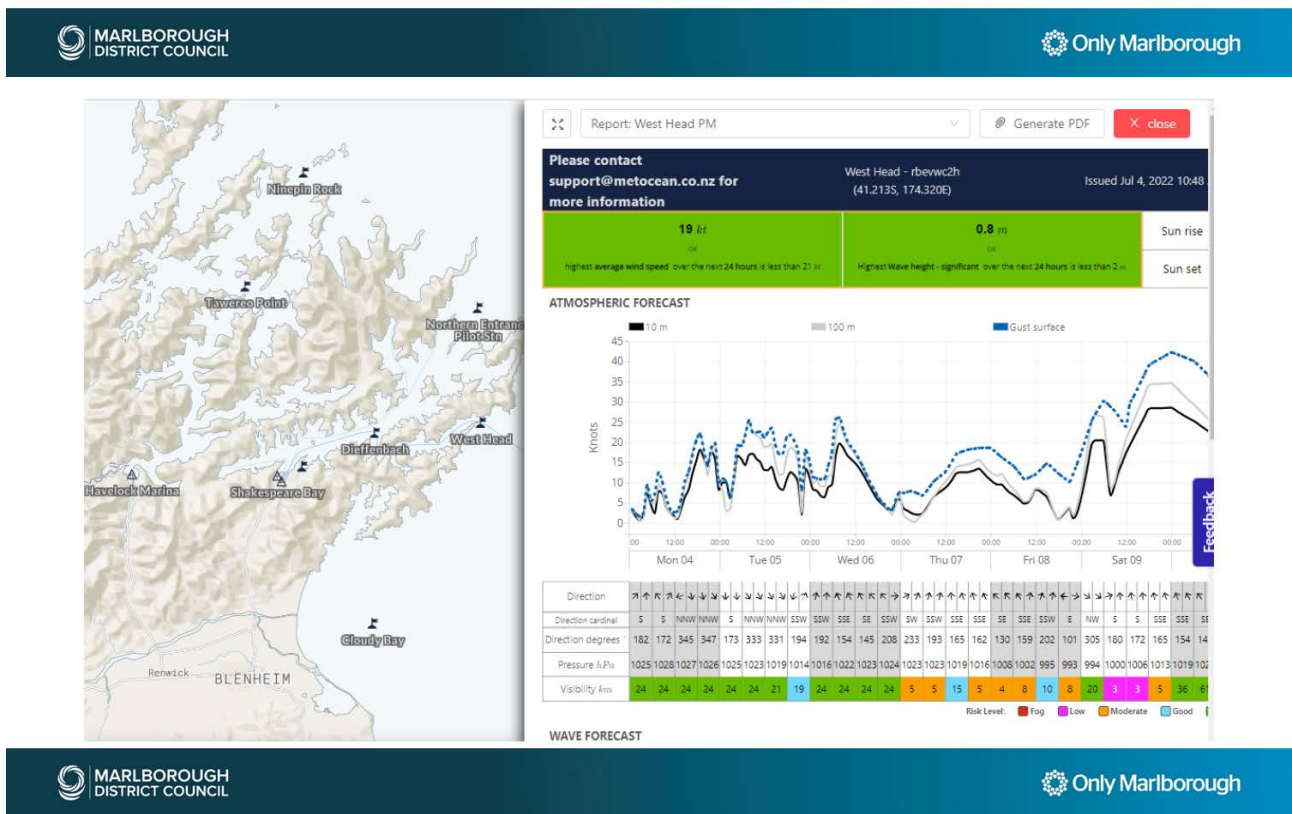
Transit Analyst

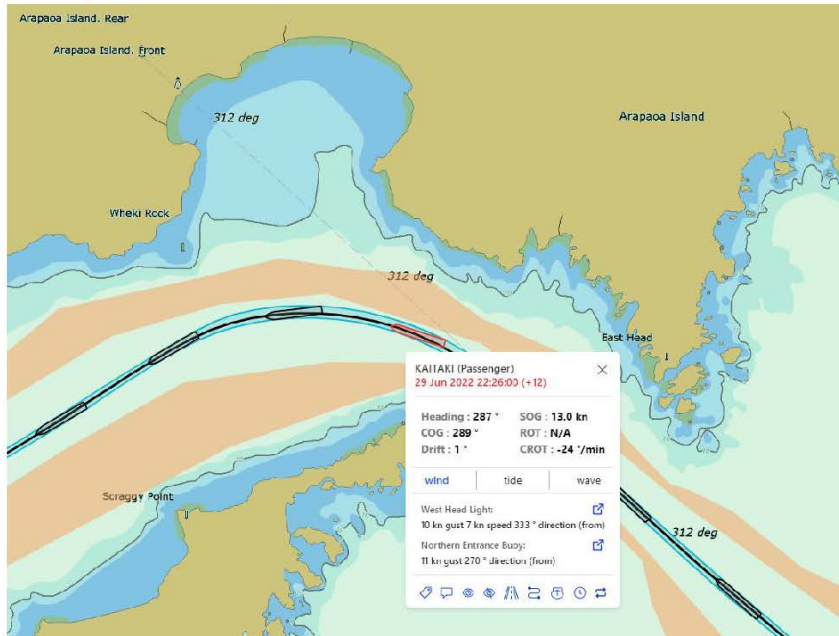
<https://transitanalyst.sandpit.dukc.net/>

Met Ocean View

Met Ocean View use data sources to develop accurate weather forecasts for specific defined locations. In conjunction with Port Marlborough the MDC Harbourmaster use these forecasts to better inform decisions made around the Harbour and shipping activities.

<https://app.metoceanview.com/helm/#/>





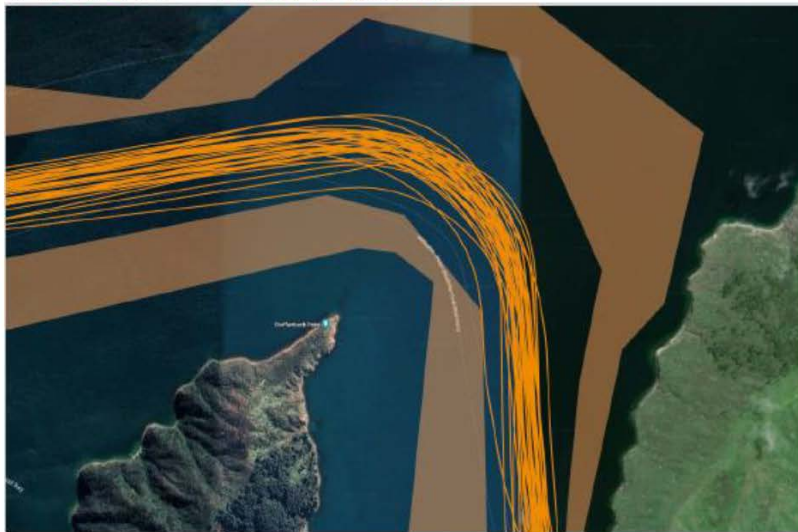
Critical Navigation Zone - Inbounds



Critical Navigation Zone - Outbounds



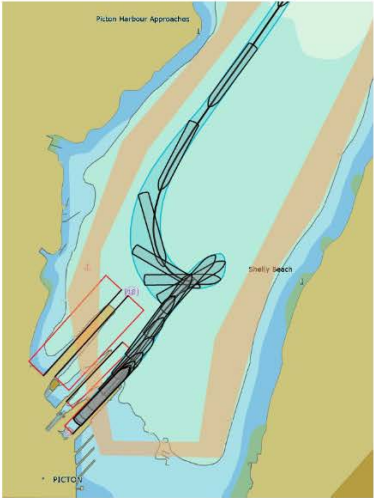
Dieffenbach - Inbounds



Dieffenbach - Outbounds



Berthing in Picton Harbour



Kaitaki – 29 June



Strait Feronia – 3 Transits between 26 – 29 June

Summary

- We are now able to with data and evidence monitor vessel transits accurately within the Marlborough Sounds. This is enabled by the previous work done by MDC to build a data network within the Sounds.
- The aim is to have large commercial vessels operating for both the ferries and other port users from a common operating picture. Whereas currently the plans are very close but with some differences.
- We are able and will continue make decisions for future operations based in evidence and data so that risk can be evaluated and managed effectively.

Next Steps?

- We intend to continue working with Transit Analyst to continue building the data picture of water space usage within the Marlborough Sounds.
- After the visit to Auckland recently, there were a few minor changes to the proposed common passage plan route. These consisted of small adjustments to course lines and radii of turns. These have been circulated to both ferry companies for review and comment, it has also been provided to Port Marlborough for review by the pilots.
- We will receive a formal report from the Auckland meeting from the NZ Maritime School.

Next Steps?

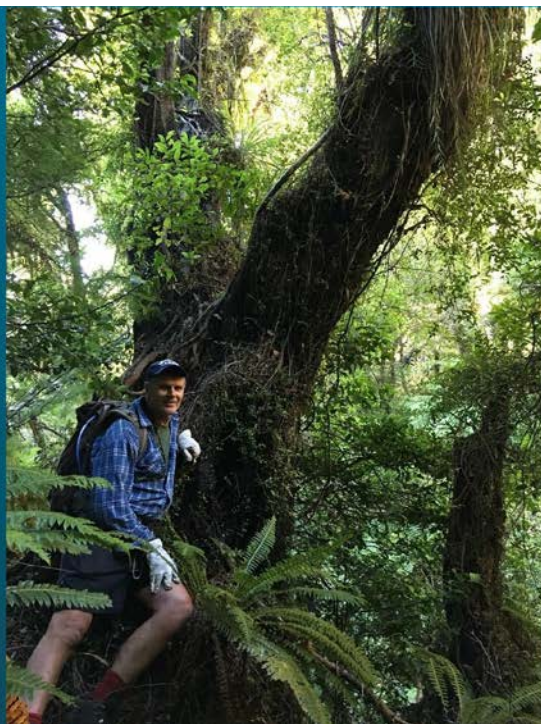
- Once feedback has been received from the ferry companies and pilots, we will then arrange appropriate meetings to collectively review and work towards formalising the common passage plan.
- To continue the project to incorporate the Northern Entrance.
- To continue to develop the network of data sensors in the Marlborough region and continue working on visualisation of the data to benefit decision making for MDC, shipping companies, operators and recreational users.



Summary Report on the
results of the

Significant Natural Areas Project 2021/22

Technical Report No: 20-005, July 2022



Highlights of Significant Natural Areas Programme 2021/22

- 12 new SNAs mapped on 5 properties: 3 in Sounds, 5 in Flaxbourne Ecological District, 2 in Medway, 2 in Kekerengu.
- MDC invested over \$188K into improving condition of SNAs in 2021/22, \$1.4M over 20 years.
- This helped leverage another \$228K from landowners and others.

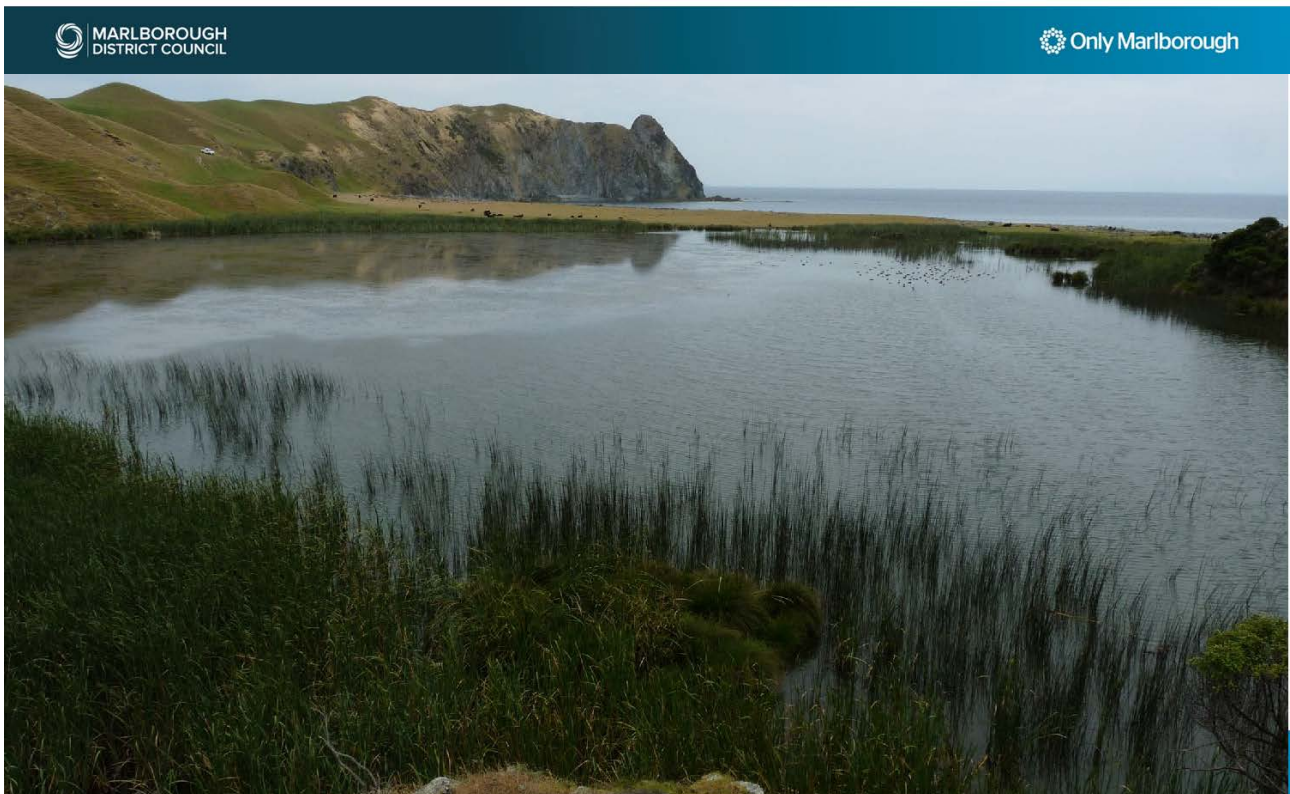


Priorities for the programme

- Pursue Legal Protection of SNAs
 - 25 new Covenants within SNAs giving a total of 114/771 SNAs covenanted.
 - Ten of the 30 projects funded in 2021/22 have covenants, with \$46,364 spent by Council, plus \$84,450 from QEII and landowners, to help improve them.



- Targeted ecological restoration in Threatened Land Environments, eg lowlands, wetlands and dunelands.
 - 18 of the 30 assisted projects were within Threatened Land Environments.
 - Eight wetlands received funding for restoration, including fencing, weed control and planting.
 - 6800 seedlings of spinifex, pingao and coastal trees planted along the Katipo Coast as part of the Beach Aid Project.



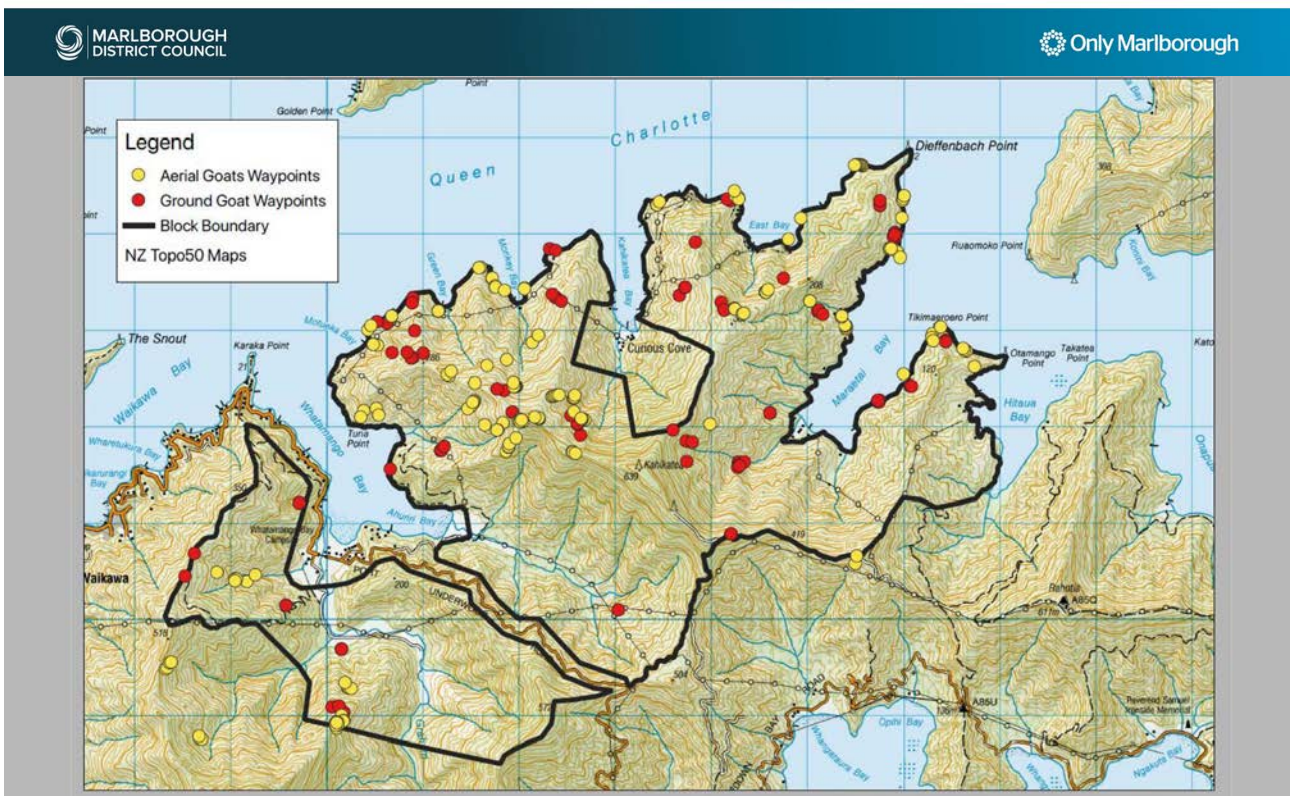


- Target sites in Ecological Districts with the least native cover (Kekerengu, Flaxbourne, Grassmere and Blenheim), as well as inland South Marlborough.
 - Eleven of the 27 managed sites were in the four Ecological Districts with the least native cover.
 - Nine new sites surveyed on four properties in the Flaxbourne and Kekerengu Ecological Districts.
 - Working with four Awatere High Country Stations to enhance their SNAs.

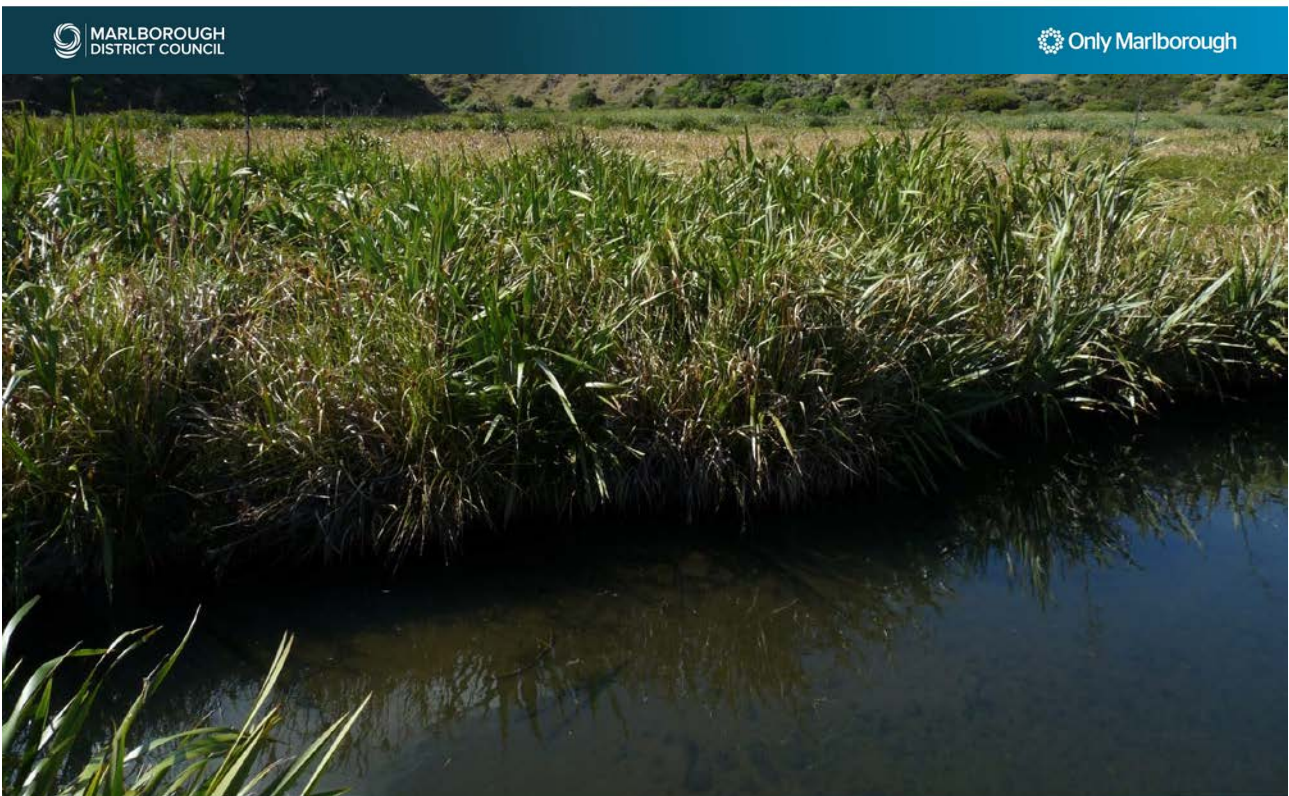
Wilding pines already starting to brown off after control around limestone bluffs.



- Continue to engage with landowners in relation to having SNAs and managing the threats in them.
 - Five new properties surveyed resulting in 12 new SNAs.
 - Presentation to the Environment Awards Tree Planting field day at the Throne.
 - Aerial animal control supported for clusters of landowners in QCS.
 - Pest and pine control via the MSRT



- Target sites on Pallic Soils (eg the dry soils from Rarangi south to Willawa Point)
 - Coastal weed control: wilding pines north of the Waima River and marram grass on the East Coast near Cape Campbell. This includes chemical control as well as planting trees to shade out marram grass.
 - Collecting seed for propagation and planting on dunes and hill country along the Katipo Coast.
 - Monitoring coastal sites on D’Urville Island.



- Identify ecological corridors and target potential SNAs and restoration areas within them.
 - Our East Coast beaches are a critical corridor for migratory and resident shore birds, and other, often threatened, plants and animals. 65% of this 80km coast is SNA (29 sites south of the Awatere River mouth).
 - Council is part of a long-term restoration project south of Marfells Beach with volunteers and landowners; killing pests and weeds and planting indigenous species. There are 16 SNAs along this coastal section.







Working for Nature/ Mahi mō te Taiao Grant Scheme

Zeke Hoskins – Working for Nature/
Mahi mō te Taiao Grant Administrator

Background

- \$110,000 to encourage community-led environmental projects
- Applications open 1 August to 31 August
- Two categories:
 - Habitat Marlborough
 - Protecting Marlborough
- Closes 31 May 2023

Applications

- Open from 1 August to 31 August
- Two categories:
 - Habitat Marlborough: Restore native habitats and improve biodiversity and freshwater quality, up to \$10,000
 - Protecting Marlborough: Control animal and plant pests that are threatening native wildlife and habitats, up to \$15,000
- Next application round opens in first half of 2023

Previous Years

- 2020 grant round
 - 34 Applications
 - 19 Successful applicants
- 2021 grant round
 - 36 Applications
 - 26 Successful applicants



Extension Double Cove, Protecting Marlborough

Subcommittee Decisions

Decisions are based on each applications merits, including:

- Biodiversity benefits
- Clear project plan and outcomes
- Long-term viability
- Community support



Maraetai Bay Pest Control, Protecting Marlborough

Previous Grantees Maraetai Bay Pest Control

Maraetai Bay Restoration Trust

- Regeneration of native forest
- Initially conducted a 3-year programme to poison wilding pines
- Next phase to address goat and possums
- Funds used for ten AT220 traps



Ungulate Control in the Sounds

Marlborough Sounds Restoration Trust

- Population of ungulates at an all-time high in the Sounds
- Aerial ungulate control operation
- Ruakaka Bay to South Endeavour
- Funds used for management and coordination of the project



Extension Double Cove pest control

Marlborough Sounds Restoration Trust

- Looking to extend an ongoing rat, stoat and possum trapping network
- Connecting with existing Double Cove/ Torea Bay network (160ha)
- Community consultation, ground truthing and preparation of a technical report



Pest control on Mabel Island

Kaipupu Point Mainland Island Society

- Weed control: Bay trees (x200), Common Barberry (x100) and Elderberry (x200)
- Predator control: A24 Traps (x4) and lure/CO2 cannisters, and an AT220 Rat and Possum Trap

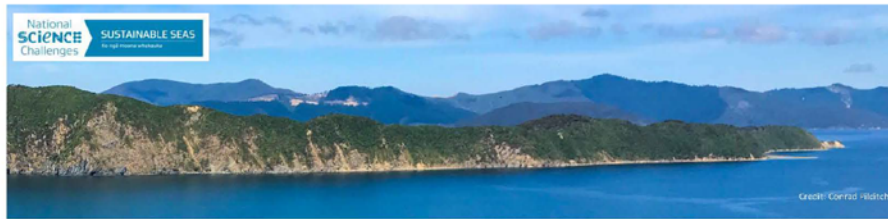
Next Round

- Opening first half of 2023
- Trouble purchasing plants
- Successful applicants informed by start of financial year



Wairau Valley Wetland Restoration – Habitat Marlborough

Appendix E – Sustainable Seas Newsletter 3 August 2022



Marlborough Sounds Regional Study

August 2022 update

Kia ora koutou

On June 27th and 28th we held two virtual hui for those interested to provide feedback on our recommendations for the next part of this project.

So far we have built maps based on high level information on where data exists for shellfish species and environmental information. We then identified areas where we have sufficient information to generate detailed species distribution maps and, subsequently, predictive distribution maps. Much more information on this process was provided in our June 2022 newsletter.

Following your feedback and further discussions amongst the project team, we have collectively decided to focus our detailed species and habitat distribution mapping on

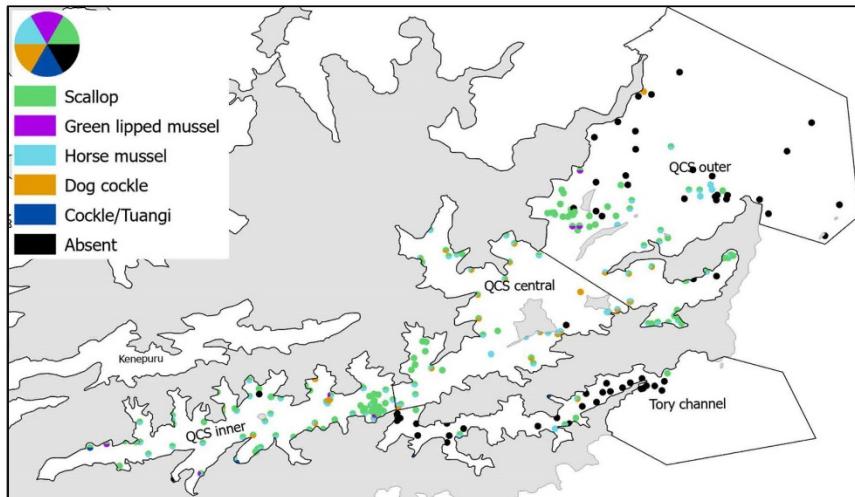
- Tōtaranui (see map). There is particular interest in Outer Tōtaranui, in the area of Meretoto (Ship Cove) to East Bay.
- All shellfish species, but with an emphasis on horse mussels.

The decision to include multiple species (rather than a single species) recognises their combined importance to a healthy ecosystem. For example, horse mussels provide added structure to a sandy or muddy seafloor, which scallops and other shellfish species can use as habitat, and which also provides some refuge from predation.

Next steps

- The project team is still seeking partners to be more deeply involved in guiding and shaping this case study. Please get in touch with one of the contacts below if you would like to be involved.
- We have begun developing maps to illustrate the current distributions of shellfish and seafloor habitat types in Tōtaranui.
- We will then build our model frameworks, incorporating this shellfish and habitat information.
- These models will then be used to predict distributions and abundance of shellfish in Tōtaranui; this will provide information to underpin our 2023 activities.

Map of Tōtaranui/Queen Charlotte Sound, showing the distributions of the five major shellfish species recorded in our literature search. The majority of records are for horse mussels (shown in light blue) and scallops (shown in green).



Contact us

We are interested in your thoughts and ideas at any stage. Contact us here:

<p>Vonda Cummings NIWA vonda.cummings@niwa.co.nz ph. 04 386 0602</p>	<p>Eric Jørgensen Marlborough Sounds Integrated Management Trust oceanbayfarm@hotmail.com ph. 027 222 6733</p>
<p>Oliver Wade Marlborough District Council Oliver.Wade@marlborough.govt.nz ph. 03 520 7400</p>	<p>Larncé Wichman Marlborough Sounds Integrated Management Trust larnc@craservices.co.nz ph. 027 224 6683</p>