

**Minutes for Meeting of the  
Sounds Advisory Group  
to be held at Scenic Circle Hotel  
(Marlborough Room) on Monday, 20 March 2023  
commencing at 10.00 am**

**Present:** Clr Faulls, Clr Innes, Clr Minehan, Clr Burgess, Monyeen Wedge (Queen Charlotte Sound), Ross Withell (Kenepuru & Central Sounds), Vic Koller (Moetapu Bay), Eric Jorgensen (Sustainable Seas), Wayne Boustridge (Te Whanganui/Port Underwood), George Shallcrass (Chair, Top of The South Wood Council), Rawinia Puna (French Pass), Shon Emerson (Kaiuma Bay), Dr John Cretny and Dick Kearsley (Cissy Bay).

**Attending via Teams** – Apology to members on Teams who were unable to join the meeting due to technical issues. Poneke Rene (Rangitoto ki te Tonga/D’Urville Island), Emma Hopkinson-Young (Outer Pelorus/Te Hoiere), Lynley Perkins (Central Pelorus/Te Hoiere), Linda Booth (Duncan Bay), Sylvie Filipo (Environmental Manager, Te Ātiawa Manawhenua Ki Te Tau Ihu Trust).

**MDC Staff Attending:** Oliver Wade (Environmental Scientist), Alan Johnson (Environmental Science & Monitoring Manager), Neil Henry (Manager Strategic Planning and Economic Development), Dr Sarah Brand (MDC Strategic Planner) Hara Adams (Kaihautū - Manager Māori Partnerships) and Bernadette Brooklands (Secretary).

**1. Welcome and Introductions –**

Members Dr John Cretny and Dick Kearsley (Cissy Bay), Shon Emerson on behalf of Gerry Gregg (Kaiuma Bay), Rawinia Puna (Te Aumiti/French Pass) and George Shallcrass (Chair of the Top of the South Wood Council). Sounds Ward Councillors, Raylene Innes, Ben Minehan and Allanah Burgess (Māori Ward – MDC).

**2. Apologies** – Vikki Ambrose (MPI), Jodi Milne (MPI), Dave Hayes (DOC), Gerry Gregg (Kaiuma Bay), Steve Murrin (Marlborough Roads), Ned Wells (MFA), Tim Greenhough (Okiwi Bay).

**3. Correspondence** - Resignation of Rick Osborne (Forestry) and Ian Shapcott (Te Ātiawa Manawhenua Ki Te Tau Ihu Trust).

**4. Confirmation of minutes 15 August 2022.**

The minutes of 15 August 2022 were taken as read.  
Clr Faulls moved / Seconded Ross Withell. Carried

**5. Actions from the previous meeting.**

	Action	Person Responsible	Outcome
1	Enquire with the Council Compliance Team for an update regarding water quality in Lochmara Bay.	Alan Johnson	Completed.
2	Clr Faulls and FENZ to liaise with Linda Booth regarding communications in event of an emergency.	Darren Crawford (FENZ)/Clr Faulls	Ongoing. FENZ and Civil Defense are reviewing the model. The Pelorus/Kenepuru community may have a coast guard vessel in Havelock which will have an operating ambulance.
3	Share the Mussel Restoration Report and the King Shag Report with group. Link to the Mussel Bed Report June 2022 report has been added to the minutes <a href="https://www.marinefarming.co.nz/mussel-bed-restoration/">https://www.marinefarming.co.nz/mussel-bed-restoration/</a>	Ned Wells	Superseded

	<b>Action</b>	<b>Person Responsible</b>	<b>Outcome</b>
4	Portage update (ongoing item)	Clr Faulls	Ongoing Making progress however still ongoing due to staff shortages, changes in management and road closures.
5	Follow up with Marlborough Roads and Marlborough Lines regarding their notification system which may be a better way to communicate roading updates to areas without cellphone coverage.	Clr Faulls/Clr Taylor	Completed Steven Neil from Marlborough Lines advised they have two staff members on call and will add any outages to their website. Dean Heiford from Council advised that there are no after hours staff to update the Antento App.
6.	Share the Significance Consultation Report.	Vikki Ambrose (MPI)	Superseded
7	Provide results of the testing on the navigation aids testing in Havelock.	Harbourmaster	Completed
8	Will the noise from the passageway in the Channels interfere with the whale's sonar or the route they take into the Channels?	Harbourmaster/DOC	Completed
9	Can DOC, and Rata Foundation can speak with MfE to work cohesively for pest control.	Clr Faulls	DOC an apology today
10	Provide Vic with name of person to speak to about the possum traps.	Clr Faulls	Ongoing
11	Find out further information on the forestry plans at the upcoming Kaiuma meeting.	Clr Faulls	Superseded
12	Provide your thoughts on meeting remuneration and travel expenses for SAG members to Bernadette.	All	Completed Two items received.
13	Advice or a list of suitable plantings that the communities could plant to help with the effects of erosion from the rain.	MDC	If the erosion is for the colonisation of new slip faces in the Sounds, then Manuka and Kanuka are some of the best. Council website has information on plantings in the Sounds area Clr Faulls has spoken to James Mills-Kelly regarding hillside erosion for farming. Clr Faulls will arrange a meeting with farmers and landowners to discuss further. Invite Mike Aviss to our next meeting.
14	Email the latest information to Tim re the Okiwi Bay Hall insurance assessment.	Clr Faulls	Completed
15	Share copy of reimbursement paper with Clr Faulls.	Linda Booth	Completed and emailed to the group by Linda Booth.

Attendance: Clr Burgess arrived at 10.36 am

#### 6. TOR and Members Travel Expenses (Clr Faulls)

- A discussion was held on the Terms of Reference. The group noted the following amendments to be considered.
  - I. That the member organisations should be nominated by their community and then this is approved by Council.

- II. It should be clearly stated that this is also a voluntary position.
- III. In the Purpose of SAG section, the last two bullet points need to be reworded.
  - a. Provide feedback on policy to MDC and Iwi through consultation processes.
  - b. Note: that SAG is unable as a group to formally submit on policy for any agency, however members can coordinate submissions through their respective representative organisations.
- IV. Should forestry be listed on the TOR? Alan noted that a new MPI engagement person, Simon Langley has been employed in Marlborough and would be a good person to have join SAG.
- V. Insert Forestry after MPI in the references.
- VI. New members to be added.
- VII. Change MFIA to the Top of the South Wood Council.
- VIII. Clr Faulls agreed that Shon Emerson is to formally take over from Gerry Gregg as the SAG representative for Kaiuma Bay.
- IX. Outer Queen Charlotte Sound representative remains vacant. Clr Faulls and Clr Burgess may have a suitable representative in mind.
- X. The Duncan Bay representative Linda Booth has moved from the area, however, will continue in her role until she decides otherwise.
- XI. Can Fisheries be involved? Action Point noted for Clr Faulls to speak to Ned Wells from MFA.
- XII. It was agreed to keep the four meetings per year with the option of one meeting per year off site from Council. Monyeen Wedge suggested that one meeting per year be held in a remote area. Clr Faulls, Alan Johnson, Hara Adams and Rawinia Puna to have a conversation outside of this forum to discuss further.
- XIII. Remove 'co jointly chaired' as Clr Faulls is the only Chair.
- XIV. Travel expenses. Clr Faulls advised that an invoice can be sent to Council via Alan Johnson for travel expenses. Thoughts on accommodation expenses and time taken to attend meetings was discussed. Thoughts were –
  - a. Giving up time from their day job.
  - b. As a Health and Safety issue accommodation should be an option.
  - c. It is a voluntary position, however payment for fuel would be appreciated.
  - d. Is SAG beneficial for Council/Sounds residents/DOC? If yes, then travel expenses should be reimbursed.
  - e. It was asked what other community groups do? Council policy currently states that travel can be reimbursed but not accommodation. Other community groups are more urban based, and their members are not travelling in from the outer Sounds areas.
  - f. Some resident's associations do assist their representative with fuel costs.
  - g. Clr Faulls noted that the group is aware that fuel is expensive, and the general cost of living has increased.
  - h. One member noted that volunteering for your community does not require payment.
  - i. Members can make their own decision to apply for payment.
- XV. Can the Rangitahi be involved? Clr Faulls noted that a Rangitahi member from the Youth Council or a school Council would be a good idea to bring in the younger generation's perspective. Please advise Clr Faulls if you know of any suitable young person.
- XVI. Linda Booth from Duncan Bay provided written feedback via email to Clr Faulls. This was emailed to members to read post the meeting. Linda's comments are noted below -
 

I do not agree with payments being made to SAG Members other than a *small* contribution for mileage.

As a SAG member we are also representing the specific areas, providing the conduit to Sounds Communities. If these Representatives require any further payment or reimbursement of any kind, (travel, accommodation, connectivity, etc) perhaps they should be in communication with the local community groups they are supporting with the expenses being picked up by these communities.

Another point for discussion is in regards to communications in emergencies. Today has provided a very valid example of how important other forms of communication are. In the last emergency in the Sounds area, this was found to be a very important lacking point. This was also the case in the recent North Island emergencies. This has been portrayed to Council many times, yet we see no movement or consideration for the outlying areas. What is/has been done with this?

In regards to roads, it appears the old problem of maintenance is still the main problem. A lot of work in Tennyson has been completed, however the ongoing maintenance of the culverts is of a concern for resident from Penzance Bay area with many blocked culverts. It appears several SAG meetings have been cancelled over the more recent times. Can I suggest that two dates are set for each Meeting (four times per annum) with a confirmation a month prior. This would then allow for Council staff to be accommodated for meetings.

- XVII. Feedback from Lynley Perkins - I understand if some members wish to be reimbursed for travel expenses however, I do not believe there should be a meeting remuneration. Personally, the meeting has great value, it is informative and provides a great opportunity to understand the workings of council. And I enjoy the chance to meet the other community representatives, Councillors, and industry members. I have known that we were able to claim for our travel expenses and I remember that in the very beginning of my involvement with SAG that I did claim once. However, I chose not to again, I am happy to give back and feel that I gain so much through my connection with this group.

- XVIII. Feedback from Rawinia Puna

**Payment for travel**

*I will use my own travel distance as an example;*

Bulwer to Picton is 3 hours 50 mins, therefore return is 8 hours approx. – 340kms. (This is literally one day of travel to attend up to a 5 hour hui.

The other representatives may have similar distances.

State Services kilometre rate for 2021-2022 is - 83 cents per km?

**Payment for attendance**

There is preparation for the meetings. Reading documents prior and after the meeting. Attendance and input at the meetings and then presenting to our French Pass community group.

SAG attendees have no funding. SAG members like myself have a day job therefore we lose a day's salary from our own jobs. Plus, one day's travel. - (2 days)

Zoom meetings – Wi-Fi connection is not constant in Bulwer.

Kanohi ki te kanohi hui is always best. Culturally and respectfully, this is best considering there are only 4 meetings per year.

Payment for attendance should be in place.

**Payment for accommodation the day before**

Health and safety must be considered “fatigue and tiredness” happens. To expect a representative to drive 7.5 hours with some breaks. Is too much for the health and wellbeing of that person.

Absolute focus and concentration of driving is paramount, and sometimes the road conditions can be treacherous as well. Driving at night can worsen the travel.

I therefore recommend representatives who travel with a time and distance like myself is provided accommodation in Blenheim or Picton, the day before the hui.

**Questions:**

The TOR document states payments are made to members for travel reimbursement. This has never happened (?).

One night's accommodation should also be provided where the meetings are held?

Attendance payments, SAG members lose a day's wages to attend, or two days if they have to travel 7.5 hours return? Others that attend are paid by their respective employer, e.g.

DOC, MDC, and MPI?

Should meetings be held in a meeting room at the MDC and in Picton? Other venues that have been used e.g: Chateau Marlborough, later last year, is expensive to hire?

Should meetings alternatively be held in SAG areas at least one of the 4 meetings?

- XIX. All thoughts will be collated and then reviewed by Clr Faulls and Alan Johnson to share with the group. Changes will then be put forward to Council.
- XX. Council lawyers will need to review the changes.

#### **Nautical and Coastal Science Update** (Oliver Wade, Environmental Scientist)

- Oliver introduced himself to the new members today and explained the role of the Nautical and Coastal Science team.
- The removal of an oil rig from the Taranaki area is underway and it will be towed into Admiralty Bay this week and then taken out of the country on the MV Blue Marlin which is a semisubmersible heavy lift ship. Oliver and his team who are trained in oil spills will be on standby at the site in case of any oil spills. YouTube video of the MV Blue Marlin can be seen here <https://www.youtube.com/watch?v=G28oAqoYXbs>
- Oliver advised that the parchment worm is dense in some areas such as Anakiwa. It appears to be sporadic in its habitat locations. The worm has a fan but this is enclosed within the tube of the worm. It lives on the seafloor in muddy or soft areas and can form a mat that covers large areas of the seabed. It is highly likely to be the same variety as what was found in the Hauraki Gulf. It is not known where it originally came from. Oliver advised not to break up the parchment worm as this spread's particles. If you remove the parchment, it must be in a completed piece.



Image 1: Chaetopterus chaetopterus-A (Parchment Worm)

#### **Questions/Answers**

- It was asked if the ballast water on the MV Blue Marlin is discharged into the bay? Oliver noted that the ballast water must go through its process 12 nautical miles out from the bay.
- Does the MV Blue Marlin and the oil rig go through a biosecurity check? Oliver advised that it does. As the ship failed its last biosecurity check, the project was delayed.
- It was asked by Monyeen Wedge what has caused the red algae bloom in Lochmara Bay. The algal bloom will be affected by climate change. Read further about the algal blooms here <https://www.mpi.govt.nz/fishing-aquaculture/recreational-fishing/where-unsafe-to-collect-shellfish/what-are-toxic-algal-blooms/>
- Oliver noted to please email him any items for the next meetings. [Oliver.Wade@marlborough.govt.nz](mailto:Oliver.Wade@marlborough.govt.nz)
- Please contact the Nautical and Coastal team if you or the community have any issues they would like discussed.

#### **7. August Weather Event Recovery** (Neil Henry – MDC Manager Strategic Planning and Economic Development)

- Neil Henry presented the PowerPoint on the Sounds Future Access Study. **See Appendix 1**

### Questions/Answers

- It was asked how many kilometers of the roads have been assessed by Geotech engineers. Clr Faulls noted that Emma Speight from Waka Kotahi advised that the huge number of areas are being assessed and then collated. This information will then assist with the allocation of funds from Waka Kotahi and the government.
- It was asked by Monyeen Wedge if people who do not use the roads in the Sounds eg such as boat access only areas like Lochmara, will these rate payers need to contribute? Neil Henry noted that this is still being worked on.
- It was asked why Cissy Bay residents are charged an extra \$99 on their rates to assist with roading upkeep in their area? Clr Faulls noted that this would be a Waka Kotahi question, however Steve Murrin is an apology today.
- Clr Faulls noted that filling out the census form does provide a huge amount of information for the areas such as the Sounds. This will be helpful for infrastructure conversations going forward.
- Clr Faulls noted that it is important that the community respond to the surveys and attend the community meetings so that all information is collected for Santec to provide correct information in their report.
- Ross asked how are the costings being done for boat access only areas? Neil advised that the water access areas are still being looked at to assess safety factors such as if another event happens and the current roading network is disrupted.

**12.45 pm - A short break was taken, and the meeting resumed at 1.15 pm.**

### 8. **Fresh Water Policy** (Dr Sarah Brand – MDC Strategic Planner)

- Dr Brand shared her PowerPoint presentation. **See Appendix 2**
- Further information can be found at [www.environment.govt.nz](http://www.environment.govt.nz)
- You can participate further by accessing the Council website <https://www.marlborough.govt.nz/environment/freshwater-management/have-your-say-on-freshwater>

### Questions/Answers

- Monyeen Wedge asked if the wetlands would be captured in the project. Dr Brand advised that if it is a natural wetland, they will be captured.

Attendance - Hara Adams left the meeting at 1.47 pm.

### 9. **DOC Update** (Dave Hayes)

- Dave provided a written update as he is an apology for the meeting today – **See Appendix 3**

### 10. **Sounds Representatives Updates**

#### **Rangitoto ki te Tonga/D'Urville Island – Poneke Rene**

- Due to technical issues at the meeting venue no update could be taken from Poneke.

#### **Kenepuru & Central Sounds Residents Association (KCSRA) - Ross Withell**

- Lack of maintenance of the roads and culverts is still an issue. There are 20 culverts that need to be replaced.
- Locals have been employed to assist with repairs of potholes and clearing the road of blockages due to Marlborough Roads being overwhelmed with repairs.

### **Sustainable Seas – Eric Jorgensen**

<https://www.sustainableseaschallenge.co.nz/our-research/marlborough-sounds-regional-study/>

<https://www.sustainableseaschallenge.co.nz/news-and-events/newsletter-archive/>

- Current projects are Restoration by Design, Shellfish Restoration and the Blue Cod Project.
- Eric and Oliver Wade will present on the Restoration by Design at our next meeting. Action Point Noted.

Attendance - Oliver Wade left the meeting at 2.02 pm.

### **Moetapu Residents Association (Mahau Sound Outward Bound) – Vic Koller**

- Ongoing road issues.
- A large mob of deer was sighted in the area. The community fundraised for a helicopter crew to cull the deer. An excellent outcome of 70 deer being culled. DOC completed a follow up and believe there are still approximately 40 deer left in the area.
- 40 volunteers assisted with the wasp eradication in the area.
- Vic reported a boat in the area is causing vibrations due to the high level of noise it emits. The boat in question has not been formally identified as yet.
  - Clr Faulls advised Vic to find out name of the boat and report it to the Harbourmaster.

### **Marine Farming Associations – Ned Wells**

- No update given as Ned is an apology for today's meeting.

### **Queen Charlotte Residents Association – Monyeen Wedge**

- Monyeen spoke to commercial divers taking large amounts of sea cumpers from Lochmara and questioned why they can do this.
  - Eric Jorgensen advised that the commercial divers have a licensed quota.
  - Clr Faulls to enquire further with Fisheries NZ. Action Point Noted.
- Lochmara has had several power outages over the past few months. One such outage lasted for five days which proved disruptive to residents.
- Monyeen wanted it noted that there is suitable access at the Lochmara foreshore for a large helicopter to land if required for an emergency.

### **Te Whanganui/Port Underwood/Port Underwood Residents Association – Wayne Boustridge**

- Wayne spoke to the vulnerability of the roading in the Port Underwood area as there is only one way in and one way out. This led to a community consultation as people need access to food and medical treatment when the roads are closed.
  - Clr Faulls to provide Wayne with the Emergency Management Operations Centre (EMOC) contact to assist with a contingency plan. Action Point Noted.
  - Clr Faulls advised that it would be helpful to invite Dave Parsons and Gary Spence from EMOC to attend our next meeting to talk about contingency plans. Action Point Noted.

### **Top of The South Wood Council – George Shallcrass**

- Nil further updates.

### **Te Aumiti/French Pass – Rawinia Puna**

- The community has dissipated with several residents moving out of the area. Mainly the elderly community or people with Yellow/Red stickered homes. The community have been working together to support each other during these difficult times.

### **Duncan Bay Residents Association – Linda Booth**

- Due to technical issues at the meeting venue no update could be taken from Linda.

### **Outer Pelorus - Emma Hopkinson-Young – Apology**

### **Central Pelorus (Hopewell) - Lynley Perkins**

- Due to technical issues at the meeting venue no update could be taken from Lynley.

### **Okiwi Bay – Tim Greenhough – Apology**

#### **Cissy Bay – Dr John Cretney**

- Roading through to Cissy Bay is the major concern for residents and especially the vulnerability of the road between Rai and Okiwi Bay, especially if heavy vehicles use the road.
- Dr Cretney also spoke regarding new provisions for very small community water schemes which will not now require a water treatment plant to be installed. Main requirement is a water safety plan and testing for E.coli twice yearly.
- The other issue for the community is the dependence on cellphones for communication in emergencies if power to the new call tower is disrupted and given it has limited battery backup. While some still have landlines, this number will diminish over time. A discussion was held on the pros and cons of Starlink which has been spoken about in previous meetings.
- As Dr Cretney will be on leave for our next meeting, Dick Kearsley will take his place. Mr Kearsley attended today's meeting to familiarise himself with the group.

#### **Kaiuma Bay – Shon Emerson**

- Positive growth in the Kaiuma Bay area which on the downside has made the fragile roading system very busy.
  - Thank you to Waka Kotahi for the hard mahi they have done so far.
  - Kaiuma Bay have also sent a letter to Waka Kotahi regarding tourists driving in the centre of the road on blind corners and there is restricted vision with high grass growth on the side of the roads.
  - Shon noted that Kaiuma Bay has two community shared septic systems which are serviced each year and funded by the community. Insurance on the system is expensive and difficult to obtain.
- **Te Ātiawa Manawhenua Ki Te Tau Ihu Trust – Sylvie Filipo**
    - Due to technical issues at the meeting venue no update could be taken from Sylvie.

#### **Clr Updates –**

- Clr Minehan attended a farmers meeting where the outcome was that farmers did not want the barging for transporting animals as the cost is too high and is not a long term solution.
- It was asked if Waka Kotahi do not fix the roads, can the locals?
- It was asked if a house is yellow stickered, how can you get it repaired if the trucks cannot get in?
  - Clr Faulls will ask Waka Kotahi to make a clear statement in their next newsletter. Action Point Noted.
- Clr Innes has attended the community meetings regarding the road to recovery and has found it helpful to see the damage firsthand and hear the community's perspective.
- Clr Burgess thanked the group for having her as part of the Sounds Advisory Group. Clr Burgess also supported having the younger Rangitahi attend these meetings.

### **11. General Business and next meeting – Monday, 19 June 2023 (venue - Committee Room, Marlborough District Council)**

- 2023 Meetings –
  1. Monday, 28 August (venue – Committee Room, Marlborough District Council)
  2. Monday, 27 November (venue TBC)
- Clr Faulls expressed condolences to the whānau of Laurance Etheridge from Te Aumiti/French Pass who recently passed away.



- Alan Johnson advised that the Council Working for Nature (WfN) grants are opening up in April. Please spread the word to your communities.
- Alan Johnson noted an agenda item for the next meeting will be the Council Environmental Plan. Action Point Noted.
- Shon Emerson advised the group of an excellent book called One Hundred Havens, The Settlement of the Marlborough Sounds by Helen Beaglehole. The book is an informative read on the history of the Sounds.

#### Action Points from the meeting.

	Action	Person Responsible
1	Clr Faulls and FENZ to liaise with Linda Booth regarding communications in event of an emergency.	Darren Crawford (FENZ)/Clr Faulls
2	Portage update (ongoing item)	Clr Faulls
3	Can DOC, and Rata Foundation can speak with MfE to work cohesively for pest control.	Clr Faulls
4	Provide Vic with name of person to speak to about the possum traps.	Clr Faulls
5	Invite Mike Aviss and James Mills-Kelly from MDC to speak on suitable plantings that the communities could plant to help with the effects of erosion from the rain.	MDC
6	Arrange a meeting with farmers and landowners for James Mills-Kelly to speak on hillside erosion.	Clr Faulls
7	Presentation on the Restoration Project.	Oliver Wade and Eric Jorgenson
8	Speak to Ned Wells from MFA if fisheries can be involved in the Sounds Advisory Group.	Clr Faulls
9	Enquire with Fisheries if the commercial divers have a licensed quota for taking sea cucumbers from Lochmara Bay.	Clr Faulls
10	Provide Wayne Boustridge with the Emergency Management Centre contact to assist with a contingency plan.	Clr Faulls
11	Invite Dave Parsons and Gary Spence from the Emergency Operations Centre to our next meeting to speak contingency plans.	Clr Faulls
12	Ask Waka Kotahi if they can make a clear statement in their next newsletter regarding yellow stickered homes and truck access.	Clr Faulls
13	Agenda item for the June meeting will be the Environment Plan.	Alan Johnson

There being no further general business, the meeting closed at 2.56 pm.



# Sounds Future Access Study Sounds Advisory Group

20 March 2023

[marlborough.govt.nz](http://marlborough.govt.nz)

## Overview of Future Access Study

### Why a Business Case approach

- Significant level of damage sustained in August 2022 event, likely to be x 4 higher cost than the \$85m Kenepuru event in July 2021 (if roads restored to pre-2021 event standard)
- The response will require significant investment by Waka Kotahi (71%-95%) and Marlborough District Council (balance of funding)
- A study is required by WK and MDC to identify priorities for roading repairs and to determine what levels of service should be provided for roading and other transport in the Sounds
- A Programme Business Case is being developed



[marlborough.govt.nz](http://marlborough.govt.nz)

## Progress and milestones

### Community engagement

- MDC Scope Survey (Dec/Jan) – 125 responses
- Stakeholder engagement event – Tuesday 24 January, Havelock – 47 attendees (invite only)
- Seven public meetings (six in person, one online) 31 January-8 February – 500+ attendees
- Main Survey, open 31 January-22 February – 919 responses
- Direct email channel – 53 written submissions
- Further stakeholder engagement with specific organisations e.g. water transport, utilities, industries
- Iwi/Maori hui planned for Tuesday 14 March



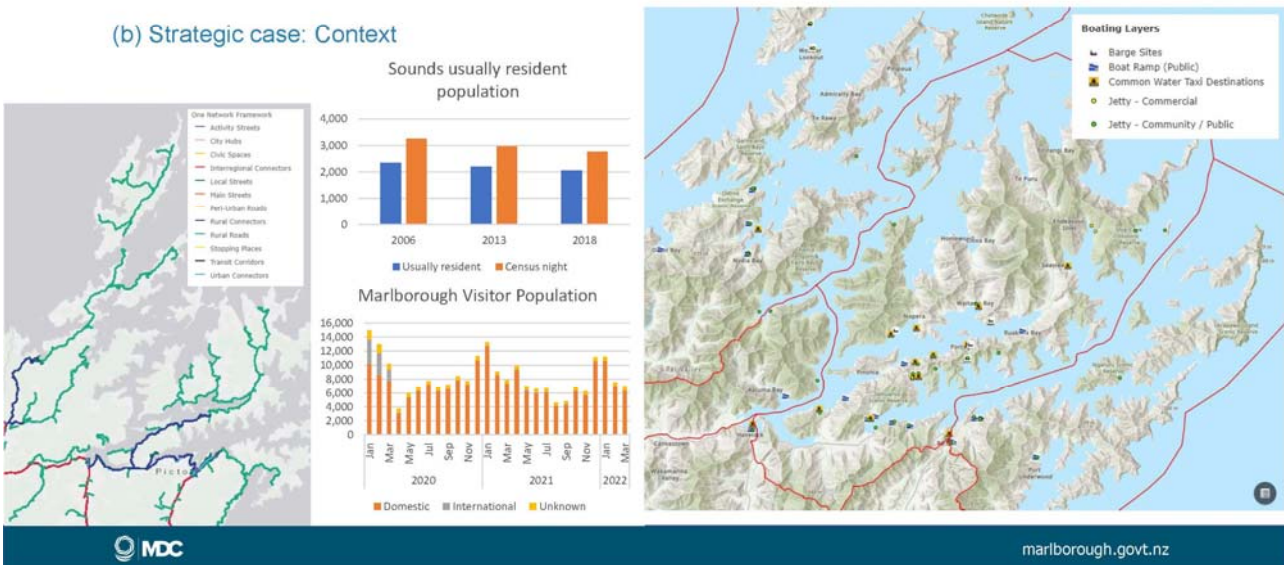
marlborough.govt.nz



marlborough.govt.nz

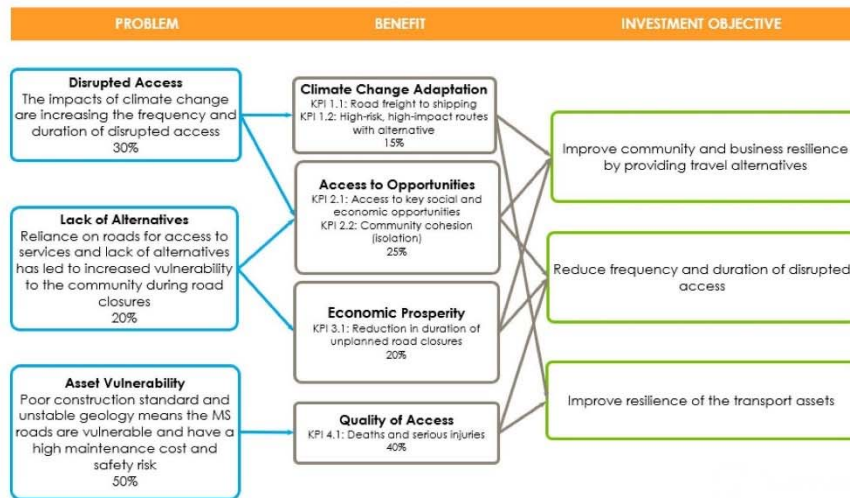
# Progress and milestones

(b) Strategic case: Context



# Progress and milestones

(b) Strategic case: ILM

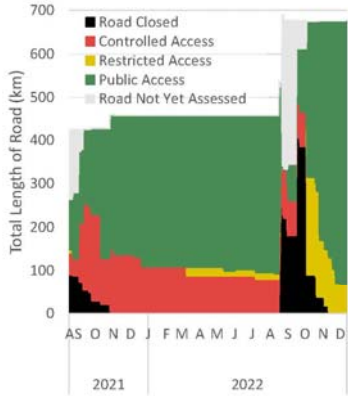




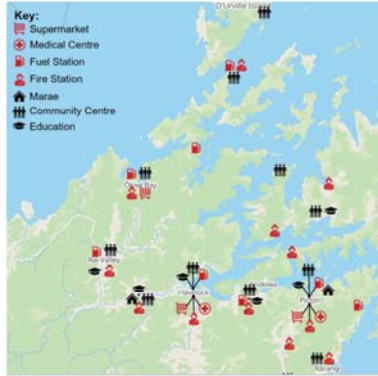
# Progress and milestones

## (b) Strategic case: Problems

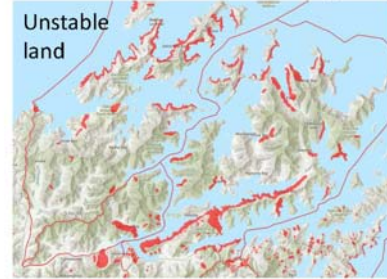
### Problem 1: Disrupted Access



### Problem 2: No Alternative Routes

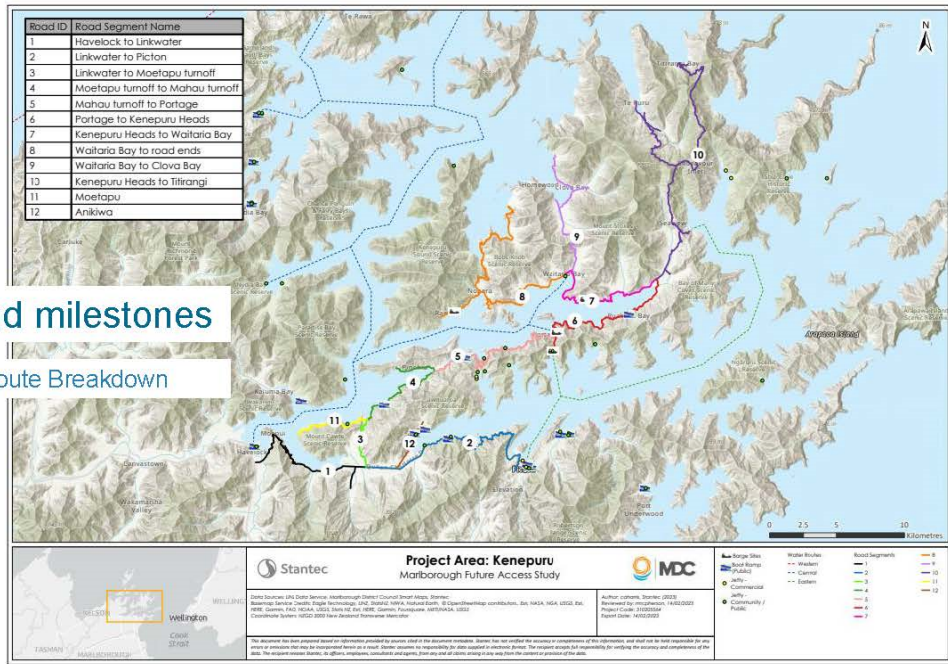


### Problem 3: Asset Vulnerability



# Progress and milestones

## Economic case: Route Breakdown



## Progress and milestones

### Next steps

- **March**
  - Iwi engagement
  - Complete strategic and economic case (option development and evaluation)
- **April**
  - Engagement with Waka Kotahi and Marlborough District Council on options
  - Engagement with Crown partners
- **May/June**
  - Stakeholder workshop and community meetings on options
  - Identify recommended preferred option for Programme Business Case
- **July**
  - Completion of the Programme Business Case
- **August onwards**
  - Decision making processes



## Presentation Plan

- The what and the why
- Provide information on what the legislation requires.
  - Te Mana o te Wai
  - Integrated Management
  - National Objectives Framework
  - Values
  - Visions
  - Freshwater Management Units (FMUs)
- Aims of this engagement
- How you can participate.
- What's coming up next?

## The What

- Government's 2020 Essential Freshwater package.
- Key element = Updated National Policy Statement for Freshwater Management (NPSFM).
- Sets new rules to protect and restore New Zealand's freshwater.
- Councils must implement through plan changes after undertaking engagement with communities and tangata whenua.



## The Why

- Freshwater matters to us all.
- Healthy freshwater is a prerequisite for a healthy wider environment and community.
- Vital to look after it and use it in ways that provide the best environmental, social, cultural, and economic outcomes.
- Aim of the Government's package
  - To stop further water quality degradation.
  - Restore waterways to health within a generation.





# Te Mana o te Wai



- Strengthened fundamental concept in the NPSFM 2020.
- It is the lens through which all matters and decisions relating to freshwater management must now be viewed.
- Protecting health of freshwater protects the environment and the community.
- Hierarchy of obligations – starting point is providing for the well-being of the water body.



## Integrated Freshwater Management

- Ki uta ki tai – mountains to the sea
- Need to:
  - Recognise interactions between freshwater, land, water bodies, ecosystems and receiving environments.
  - Manage freshwater and the use and development of land.
  - Manage on a whole catchment basis.
  - Manage effects on receiving environments.



# The National Objectives Framework (NOF)

NOF Steps	What is required – At each step engagement with communities and tangata whenua
1 – Identify Freshwater Management Units (FMU)	Define FMUs (where the provisions and rules will apply). Consider mountains to sea, physical water and coastal basis > cultural/community based catchment groupings.
2 - Visions	For each FMU – what do communities and tangata whenua aspire to? Timescale needed
3 – Values	For each FMU – what freshwater values are important to communities and tangata whenua?
4 – Environmental Outcomes	For each Value – what is the goal sought by communities and tangata whenua?
5 - Attributes	For each Value – how can we measure or assess whether we are meeting the Value now and over time?
6 – Attribute states	For each Attribute – what is the baseline and current state? What are we aiming for (target state)? If these are different what are the interim targets to meet on the way to the target state?
7 – Limits & Action Plans	For Attributes not meeting target state – what rules (limits) are needed in the Plan and what other non-regulatory actions (monitoring, restoration, education etc) are needed to reach our goals?
8 – Monitor progress	Monitor progress towards target states and environmental outcomes and make changes to take action to move towards outcomes.



## Freshwater Values

- Must be identified for each FMU.
- 4 compulsory values, 9 other national values, additional regional values.
- For each value identified, environmental outcomes must be set.
- Environmental outcomes will be expressed as objectives in the Marlborough Environment Plan (MEP).
- When met, environmental outcomes must fulfil long-term visions.



### 4 Compulsory Values

Ecosystem health	Freshwater ecosystems are healthy and able to sustain the indigenous aquatic life with a focus on water quality, water quantity, habitat, aquatic life, and ecological processes.
Human Contact	People can connect with water through a range of activities.
Threatened species	Critical habitats and conditions necessary to support a population of threaten species and recovery of that species.
Mahinga kai	Kai is safe to harvest and eat, providing a range of desired species plentiful enough for long term harvest.

### 9 Other National Values

Natural form and character
Drinking water supply
Wai tapu
Fishing
Transport and Tauranga waka
Hydro-electric power generation
Animal drinking water
Irrigation, cultivation, and production of food and beverages
Commercial and Industrial use



## What other Values are there?

### Additional Values – for example

Flood capacity and drainage

Spirituality of water and ecosystems

Public access

Existing infrastructure

Educational sites



## Long-term Visions – Goals with timeframes

They must...

- Express what communities and tangata whenua want the FMU to be like in the future
- Be ambitious but reasonable.
- Be informed by the history of, and environmental pressures on the FMU.

## Vision Examples from other regions

- The FMU is managed in accordance with Te Mana o te Wai objectives and polices.
- The FMU and estuaries are returned to a healthy condition.
- The habitats of indigenous species are restored, and indigenous species can migrate naturally within the FMU.
- Land use practices minimise discharges of nutrients and other contaminants to water bodies.
- Land management will minimise the extent of accelerated soil erosion, including where impacted by climate change.
- Waterways are safe, accessible and provide for swimming and other recreational uses.
- The ongoing relationship and connection of mana whenua to waterbodies and wai tapu is provided for.
- Waterways provide good and accessible mahinga kai and food resources.
- A long term viable spring fed ecosystem is achieved.
- The impact of water takes in managed in a manner that is responsive to climate change.

## What is an FMU?

A way of dividing the region to manage its water.

Can have sub-FMUs = smaller catchments.  
Every waterbody must be in an FMU.

Within each FMU, identify:

- Monitoring sites
- Primary contact sites
- Locations of habitats of threatened species
- Outstanding water bodies
- Natural inland wetlands.



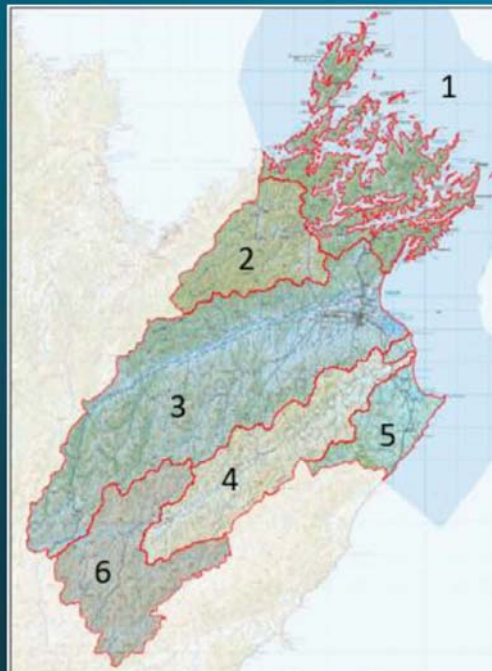
## Considerations for Marlborough's Proposed FMUs

1. Hydrological / Geographical – Where and how does the water flow? Catchments.
2. Integration – Ki uta ki tai – from the rain falling onto the land, its journey across and through the land and its final connection to coastal water.
3. Our communities.
4. Our regional boundary.
5. Practical issues with monitoring and reporting within resources and time available.



## 6 Proposed FMUs

- 1 - Marlborough Sounds Complex
- 2 - Te Hoiere / Pelorus
- 3 - Wairau
- 4 - Awatere
- 5 - East Coast Complex
- 6 - Waiau toa / Clarence







## Marlborough Sounds Complex FMU

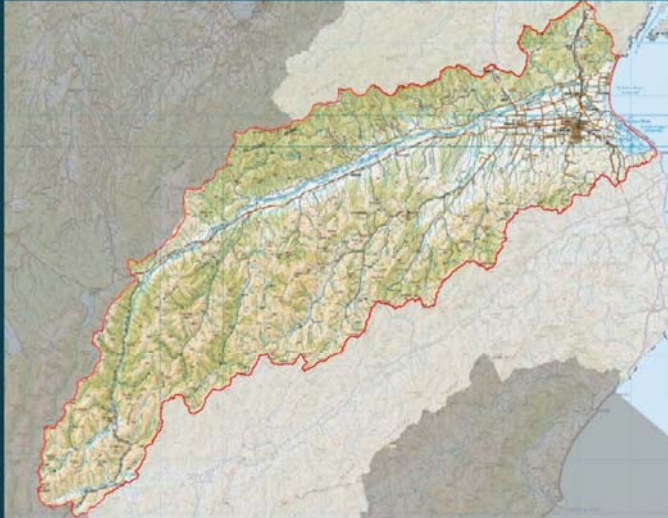
- 1,473 Km<sup>2</sup> Area
- A collection of small catchments characterised by steep, short run streams entering into the Marlborough Sounds, Tasman Bay and Cook Strait.
- Includes Linkwater catchment – Linkwater Stream, Cullen Creek and Ada Creek.
- Includes the centres of Waitohi/Picton, Waikawa and Linkwater and small communities in various bays.
- No lakes, wetlands commonly associated with the heads of bays.
- Shares an estuarine/marine boundary with Te Hoiere/Pelorus FMU at Havelock.



## Te Hoiere / Pelorus FMU

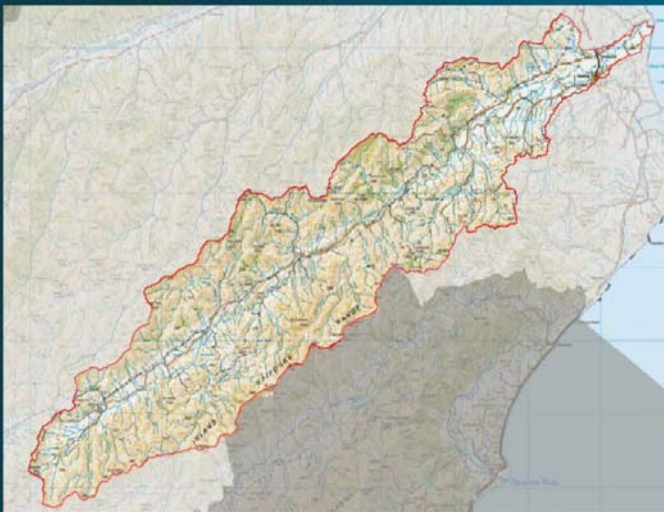
- 1,042 Km<sup>2</sup> Area
- Te Hoiere / Pelorus River and its tributaries from its source in the Richmond Ranges to its entry into Te Hoiere / Pelorus Sound at the Motuweka / Havelock estuary.
- Major Tributaries include Rai, and Wakamarina.
- Kaituna River also within FMU.
- Te Hoiere Catchment restoration project already happening.
- Havelock and Rai Valley Townships and dispersed rural community.
- Significant proportion of the catchment is covered in indigenous vegetation.
- Many wetlands associated with the valleys.





## Wairau FMU

- 4,187 Km<sup>2</sup> Area – Largest FMU
- Wairau River and its tributaries from its source in the Spencer Mountains to the sea at Cloudy Bay.
- Longest river – 170Km.
- Multiple tributaries – Branch, Goulter, Waihopai, Omaka, Taylor, Onamaultu, Tumarina Rivers.
- Richmond Ranges to the north, Ragland Ranges to southwest,
- Lake Chalice, Fish Lake, Grovetown Lagoon and significant number of wetlands.
- Largest population - Blenheim, Renwick, Spring Creek, Wairau Valley.



## Awatere FMU

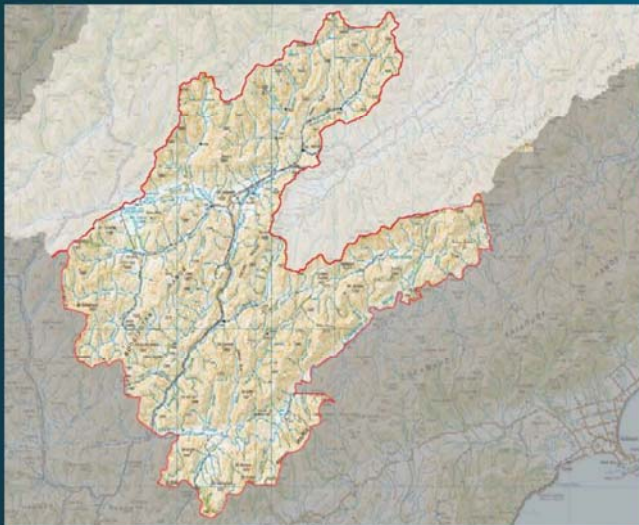
- 1,573 Km<sup>2</sup> Area, 110 Km in length.
- Awatere River and its tributaries from its source in mountains southeast of Molesworth to the sea between Clifford Bay and Cloudy Bay.
- Southern boundary - Inland Kaikoura Mountains, highest peak Mt. Tapuae-O-Uenuku (2885m).
- Northern and western Boundaries - several ranges of mountains, including the Black Birch Range.
- Small lakes, e.g. Lake Jasper and multiple significant wetlands.
- Includes township of Seddon and dispersed rural community.





## East Coast Complex FMU

- 673 Km<sup>2</sup> Area
- Collection of rivers along the south eastern coast draining east into Cloudy Bay and south of Camp Campbell.
- Major Rivers – Waima, Flaxbourne and Blind River.
- Lake Elterwater, a few significant wetlands.
- Township of Ward and dispersed rural population.
- Includes an area to the north of the Awaterere FMU – North Dashwood / Redwood Pass.



## Waiau-toa / Clarence FMU

- 1543 km<sup>2</sup> Area
- Named after Waiau-toa /Clarence River which forms the southern FMU boundary.
- Main tributary, Acheron River flows south from headwaters near the Acheron Saddle through Molesworth to its confluence with the Waiau-toa /Clarence close to the southern boundary of the FMU.
- Alpine / High country environment.
- Currently sparsely populated.
- Alpine lakes, Lake McRae in the NE and Tarndale Lakes in the NW, numerous significant wetlands.

## This 1<sup>st</sup> Engagement aims to find out.....

1. If we have appropriately divided up the region into 6 freshwater management units (FMUs)?
2. What are our visions for the future of Marlborough's freshwater?
3. What we value about freshwater in Marlborough?



## How to participate further....

- Head to the Council Website and search - Freshwater Management

<https://www.marlborough.govt.nz/environment/freshwater-management/have-your-say-on-freshwater>

Find 2 survey links:-

- **1 – Quick map-based survey** - to identify where you interact with freshwater and what activities you undertake.
  - **2 - 15-20 min online survey**, traditional form survey diving deeper into freshwater and all its aspects.
- Fill in a hard copy survey
  - E-mail your views directly to [freshwater@marlborough.govt.nz](mailto:freshwater@marlborough.govt.nz)

## What's Next?

- First engagement has been extended.
- 2 more rounds of community engagement
  - NOF steps 3-6; and
  - Draft plan rules and action plans.

### TIMELINE OF PUBLIC ENGAGEMENT



**Report for Sounds Advisory Group**

20 March 2023.

<b>Sounds</b>	<p><b>Biodiversity</b></p> <p>A regular check by the Conservation Dog team of Te Pakeka picked up the presence of a rodent. Extra traps and monitoring devices were deployed as part of the incursion response and a mouse was caught. A dog has revisited the island again and we are awaiting any news of further detections. If further detections are made either by the dog or from other monitoring we will escalate the response as advised from a specific TAG tea that has been set up.</p> <p>A plague skink was trapped in one of the surveillance areas at Havelock. This followed two years of no detections. MPI have decided that since there are plague skinks already in Marlborough and that there is little chance of preventing more entering from the North Island that they will no longer be involved in control at this site. DOC will pick up the trapping work, mainly because Havelock is a gateway to the predator free islands in Pelorus Sound.</p> <p>We had the benefit of having two teams of NMIT trainee rangers working over two weeks on Queen Charlotte islands.</p> <p>The four Tuatara that were held at Ecoworld in Picton have been temporarily relocated to Lochmara Lodge following the closure of Ecoworld. Lochmara Lodge upgraded their gecko enclosures and the Tuatara will remain there until conditions are favourable for relocation further into the Autumn. They will be part of a larger group of Tuatara being translocated from several captive locations where there are excessive numbers.</p> <p>The Moawhitu wetland restoration steering committee visited the site to observe progress and to discuss the recent storm event effects on the lake. The wetland continues to develop and the change from 5 years ago, when the project started, is now quite dramatic.</p> <p>James Speirs has resigned as Biodiversity supervisor and we are currently arranging for this role to be filled through a secondment until it can be advertised and filled.</p> <p>Work is underway to replace the solar power unit on Takapourewa. When this is in place we will not need to provide solid fuel for heating. In the past this has been coal but in recent years we changed to Bio – Bricks which still need to be quarantined and delivered to site.</p> <p><b>Heritage and Visitors</b></p> <p>The Cullens Point Loop Track has been repaired following slip damage from the last two big storm events. This involved several weeks of digger work and some re-metaling of a steep section of track.</p> <p>Outward Bound provided the labour to remove a slip from the Waterfall Track that leads off from Mertoto/ Ship Cove.</p> <p>It was sad to hear that Lawrence Etheridge passed away after a short illness. Lawrence and partner Grace managed the French Pass campground for us for over 15 years and they were a big part of the local community.</p> <p>Staff hosted a couple of Coromandel Peninsula staff who were interested in seeing other areas that were affected by storm events to help to inform them on future options for their badly affected camps and facilities.</p>
---------------	--

	<p>Assistance was provided to the Census team who required forms to be available to five of our sites, including the bigger campgrounds and a couple of huts.</p> <p>The annual weed control programme has almost been completed along the sides of the Queen Charlotte Track.</p> <p><b>Community</b></p> <p>Staff organised a rubbish pick up as part of Seaweed. This also included staff from Sandfords.</p> <p>Concession monitoring was undertaken for an adventure sports event and a marine mammal tourism operator.</p> <p>A successful environmental event was held at Momorangi Campground that targeted kids.</p>
--	---

Dave Hayes  
Operations Manager