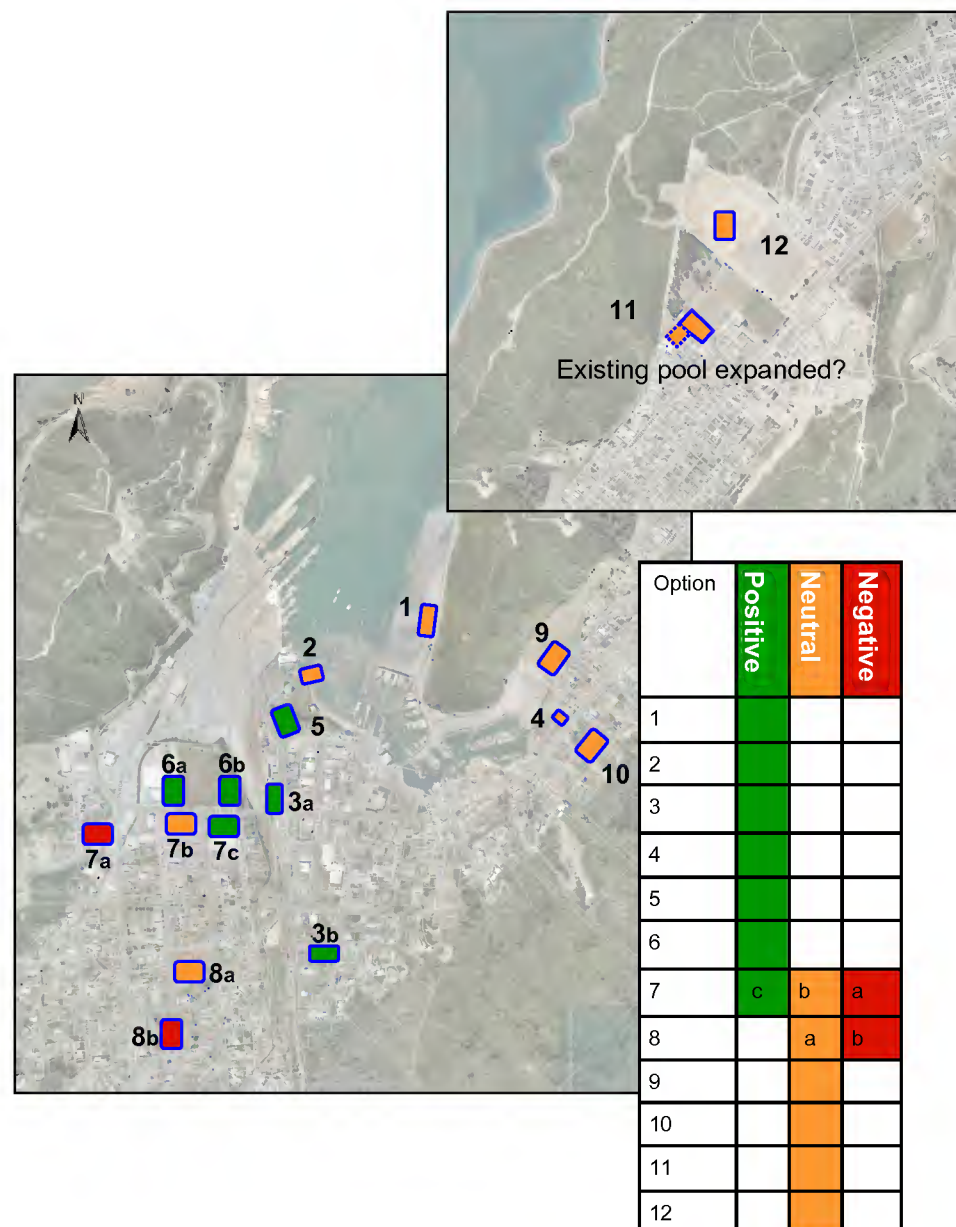


APPENDIX 2. SWIMMING POOL LOCATION

Detailed Swimming Pool Location Evaluation per Discipline

Community and Recreation

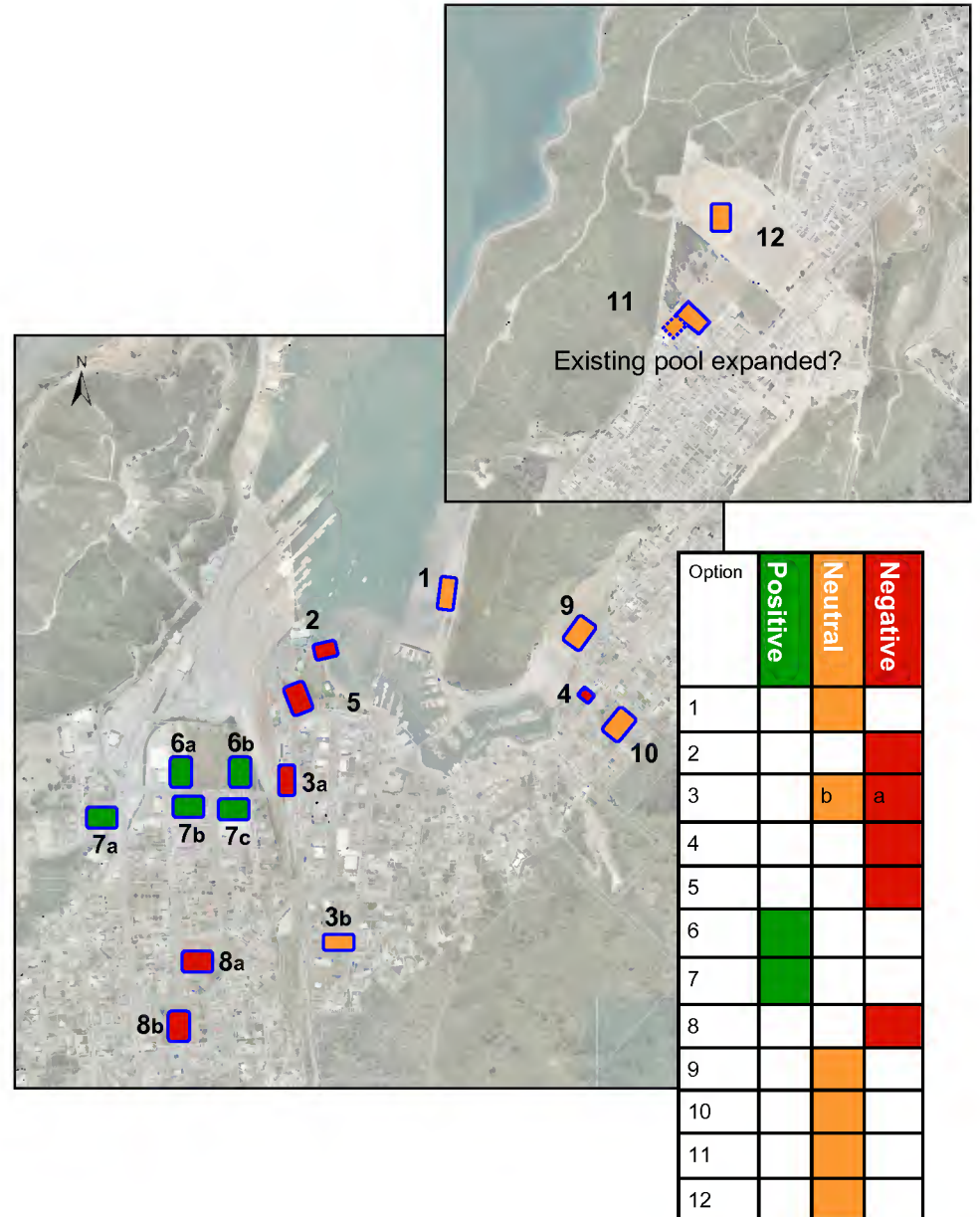
Site Option	Positive	Neutral	Negative	Comments
1	x			Strong statement, high profile site, good relationship with foreshore
2	x			Strong statement, high profile site, good relationship with foreshore
3	x			Close to town but weaker than 1&2 due to lower profile site
4		x		Close to marina and other water activities, but adjoins residential activity
5	x			Good with foreshore
6	x			In industrial area – which might be OK for swim schools etc but less for aquatic centre
7	c	b	a	As per above
8		a	b	Hidden deep within residential area, no interaction with other activity
9				Close to marina, Shelley Beach etc, but far away from population base
10		x		In residential area away from other facilities
11		x		Easy option; although away from other facilities and far away from population base
12		x		Good relationship with sport facilities, but far away from population base



APPENDIX 2. SWIMMING POOL LOCATION

Movement

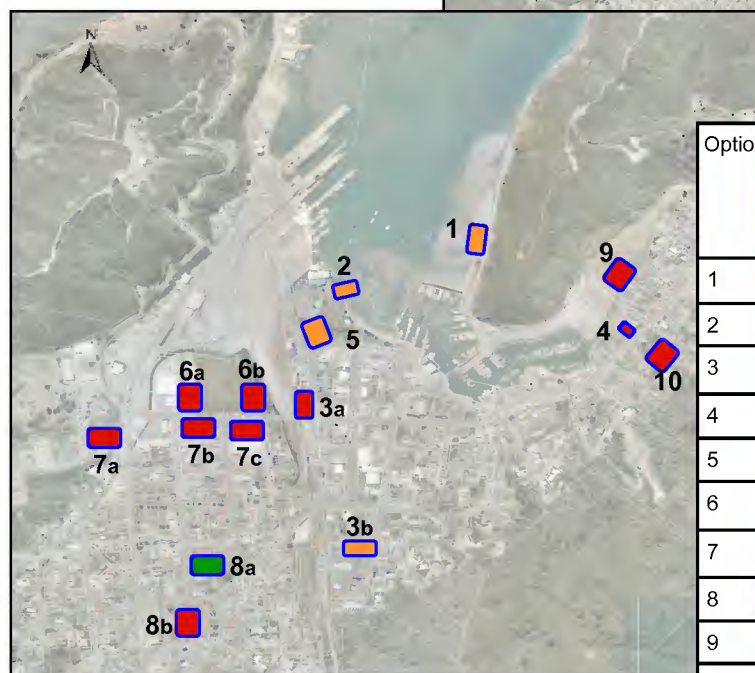
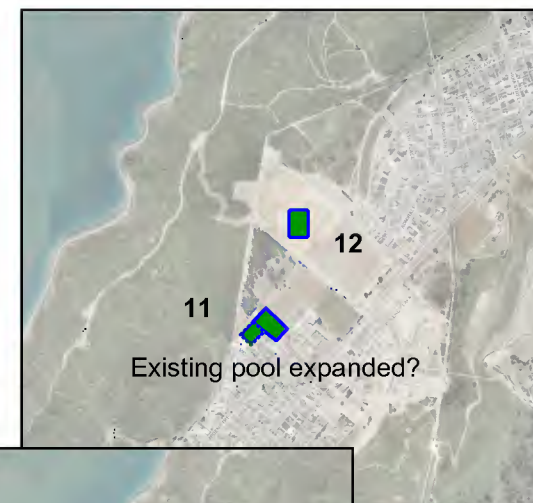
Site Option	Positive	Neutral	Negative	Comments
1		x		Good site but access is difficult as it is across Port Co land
2			x	Difficult to get easy access to the site
3		b	a	Difficult to get easy access to the site
4			x	Waikawa Road capacity issues
5			x	Difficult to get easy access to the site
6	x			Handy to town with good opportunity for parking
7	x			Handy to town with good opportunity for parking
8			x	Remote from town, interferes with State Highway
9		x		Waikawa Road capacity
10		x		Waikawa Road capacity
11		x		Waikawa Road capacity; good site, but parking is difficult the way it is, not too difficult to improve.
12		x		Waikawa Road capacity



APPENDIX 2. SWIMMING POOL LOCATION

Infrastructure

Site Option	Positive	Neutral	Negative	Comments
1		x		Will need to upgrade services
2		x		Will need to upgrade services
3		b	a	(A) High traffic and services through site (b) no real problems
4			x	Interferes with existing infrastructure
5		x		Will need to upgrade services
6			x	Site floods and contaminated with sewage in high rainfall
7			x	As above
8	a		b	(a) Central site (b) dangerous traffic flows water mains through site
9			x	Site floods and potential sewer surcharge, sewerages line in the way
10			x	Services at capacity overflows lower down
11	x			Close to sports fields
12	x			As above

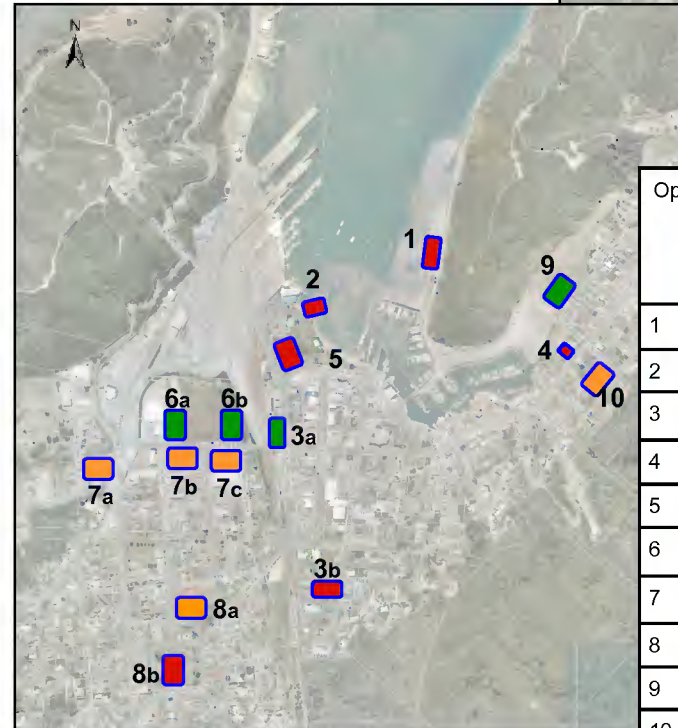
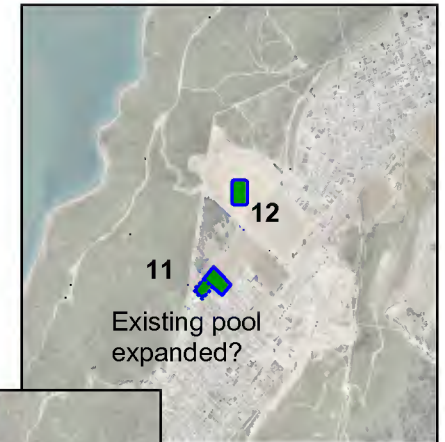


Option	Positive	Neutral	Negative
1			
2			
3		b	a
4			
5			
6			
7			
8	a		b
9			
10			
11			
12			

APPENDIX 2. SWIMMING POOL LOCATION

Landscape and Open space

Site Option	Positive	Neutral	Negative	Comments
1			x	Visual impact and takes space from Shelley Beach
2			x	Visual impact and takes open space
3	a		b	A: fine; B: impacts on valuable church open space
4			x	Takes up open space, and site is constrained
5			x	Takes up open space
6	x			Good new use for derelict recreational space
7		x		Industrial area
8		a	b	A: takes up potential open space; B: impacts on Nelson Square
9	x			Link with access to Victoria Domain?
10		x		Replaces campground
11	x			fine
12	x			fine

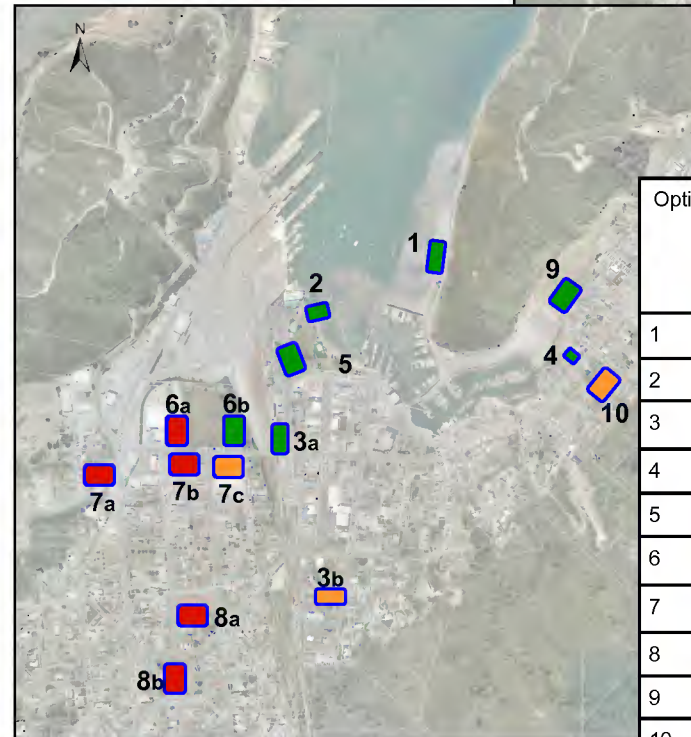
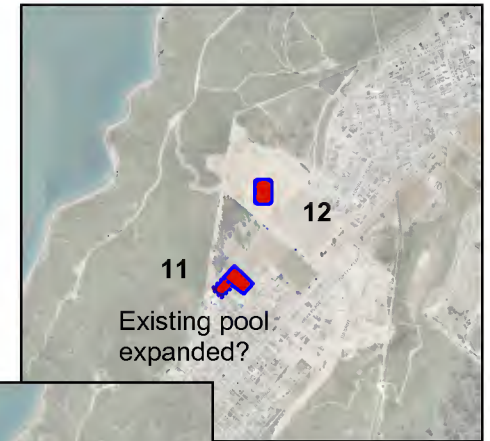


Option	Positive	Neutral	Negative
1			
2			
3	a		b
4			
5			
6			
7			
8		a	b
9			
10			
11			
12			

APPENDIX 2. SWIMMING POOL LOCATION

Town centre and Tourism

Site Option	Positive	Neutral	Negative	Comments
1	x			Iconic site
2	x			Iconic site, walking distance from town centre
3	a	b		A: walking distance from High Street, visible site; B: further from town centre
4	x			Slightly longer walking distance from town centre, but potentially attractive route
5	x			Visible site on movement routes and close to town centre
6	b		a	A: distance from town centre, route leads through industrial area; B: visible from Auckland Street, walking distance from town centre, not quite in industrial area yet.
7		c	ab	A and B: Too far out of town centre; C: walking distance to town centre
8			x	Too far out of town and away from visitor movement
9	x			Slightly longer walking distance, but potentially attractive route
10		x		Hard to find and replaces holiday park, distance not too bad
11			x	Too far out of town centre and away from visitor movement
12			x	Too far out of town centre and away from visitor movement



Option	Positive	Neutral	Negative
1			
2			
3	a	b	
4			
5			
6	b		a
7		c	ab
8			
9			
10			
11			
12			