

**Section 7 consists of 6 sub-sections:**

**7.1 Rai Valley Township**

**7.2 Okiwi Bay**

**7.3 Canvastown / Wakamarina**

**7.4 Anakiwa / Tirimoana**

**7.5 Linkwater / The Grove**

**7.6 Ohingaroa Bay**

An Inquiry-by-Design workshop was dedicated to each of these settlements. Each sub-section contains a summary of the results of these workshops, which is a combination of reporting by technical Council staff, analysis and advice by external consultants and the integration of both. Furthermore, an important source of information has been: *Marlborough Townships and Small Settlements Growth Study, 2008*, by: Environmental Management Services Ltd for Marlborough District Council.



## Havelock-associated settlements

## SECTION 7

# 7.1 Rai Valley Township

## Summary of findings and proposed initiatives:

- Additional residential 43 sections—staged
- Development on the old mussel factory site
- Traffic calming entrance thresholds on State Highway 6
- Pedestrian crossing near the Post Shop
- Footpath on the western side of SH6
- Improved recreational facilities near the river



## RAI VALLEY

### 7.1.1 Residential growth

- Subdivision is recommended on the 'Rural 2' zoned land located on the western side of the settlement (refer to 1 in Figure 7-1) to create approximately 43 lots to cater for the projected growth in the Sub-district. Development is already occurring in this area as there are currently eighteen sub-divided lots for sale near Bryants Road. These subdivided lots have been included in calculation.
- Re-zoning and subdivision could occur on the old Mussel Factory site (2) in order to create eight new residential lots. This area is currently zoned as 'Rural Township' and would require a site evaluation of industrial contaminants.

### 7.1.2 Proposed initiatives

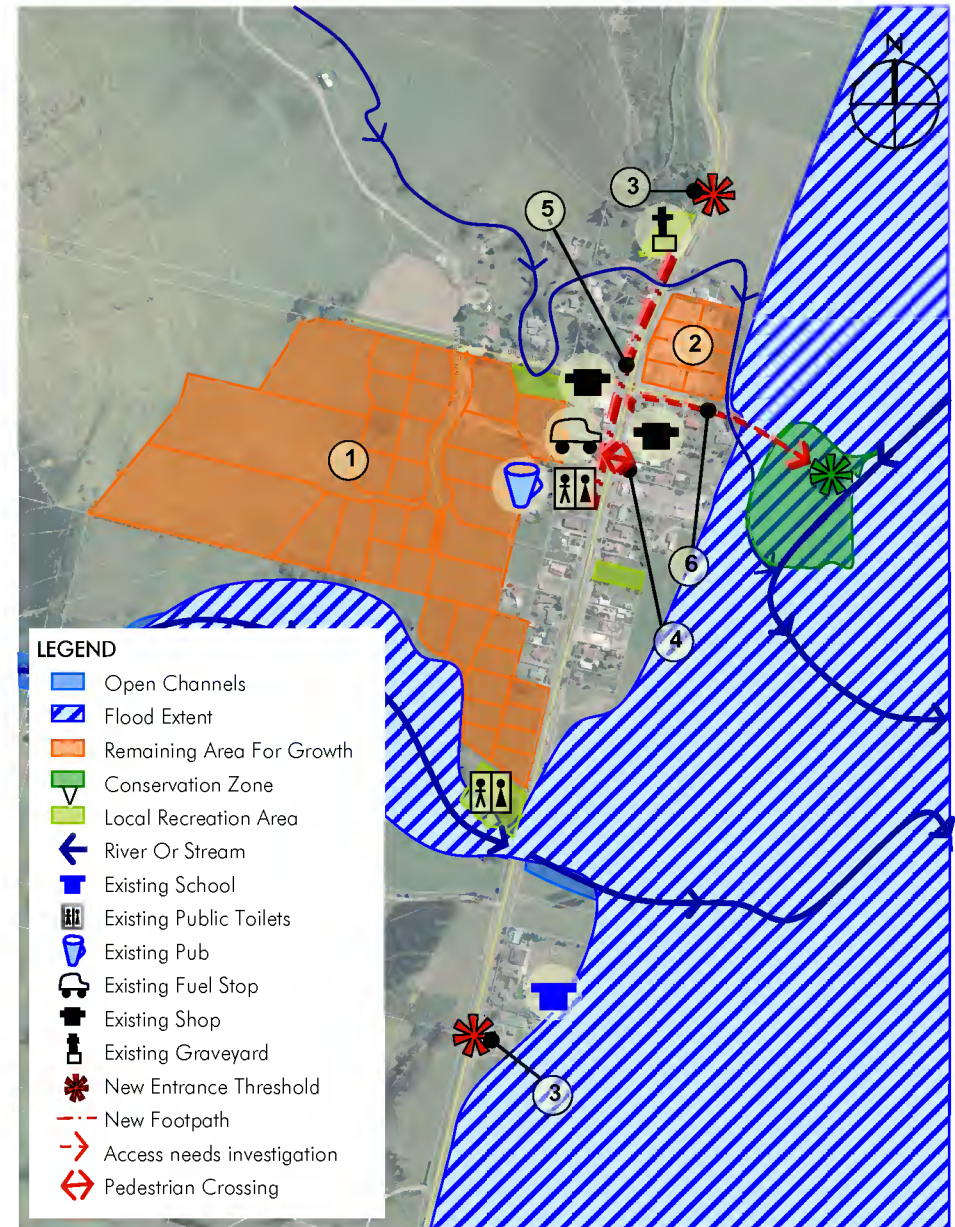
The following illustrates the proposed actions and their benefits for Rai Valley:

- In order to improve traffic safety within the village, it is proposed to introduce:
  - Entrance thresholds on State Highway 6. These elements mark both the southern and northern end of the township in order to alert drivers that they are approaching Rai Valley (3). Additionally, in their signage and planting they will carry a distinguishable Marlborough signature that will be repeated with proposed entrance thresholds in Havelock, Wairau Valley Township, Spring Creek, Seddon and Ward. More information on these elements is presented overleaf;
  - A pedestrian refuge by the Post Shop (4), to provide a safe crossing opportunity across State Highway 6 which currently divides the settlement's cluster of retail and community facilities. This will assist with keeping the speed in the heart of the settlement to the signposted limit of 60km/h; and
  - A footpath on the western side of State Highway 6 between the tavern and the cenotaph (5). This is a popular route for both locals and visitors, and connects the town with one of its important focal points. This pathway needs to be formalised in order to emphasize the importance of the monument, and to improve pedestrian safety.
- Improved public access to the conservation land around the river on the eastern side of Rai Valley (6) should be investigated. This would help stimulate more recreational activity in the area and connect the township to one of its natural features.

#### Long term aspirations

The following issues will have to be addressed:

- The township accommodates a number of important community facilities, however it is lacking in health-related facilities and amenities that entertain the youth. The nearest GP post is in Havelock, visiting from Blenheim 3 times per week.
- There are concerns about the mental health of the community, especially with a relatively high percentage of solo mothers and the lack of activities for youth.



RIGHT FIG. 7-1: Summary of proposed initiatives in Rai Valley

## RAI VALLEY

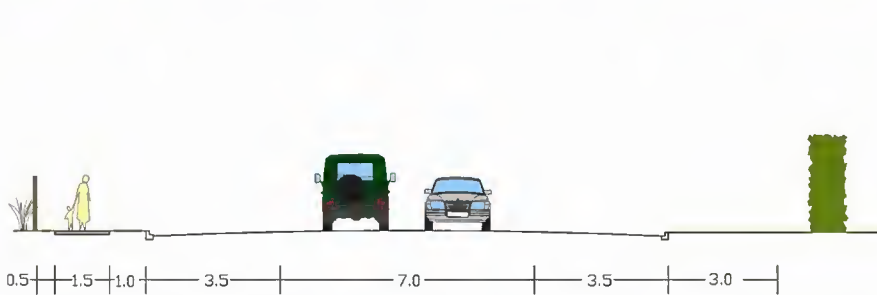
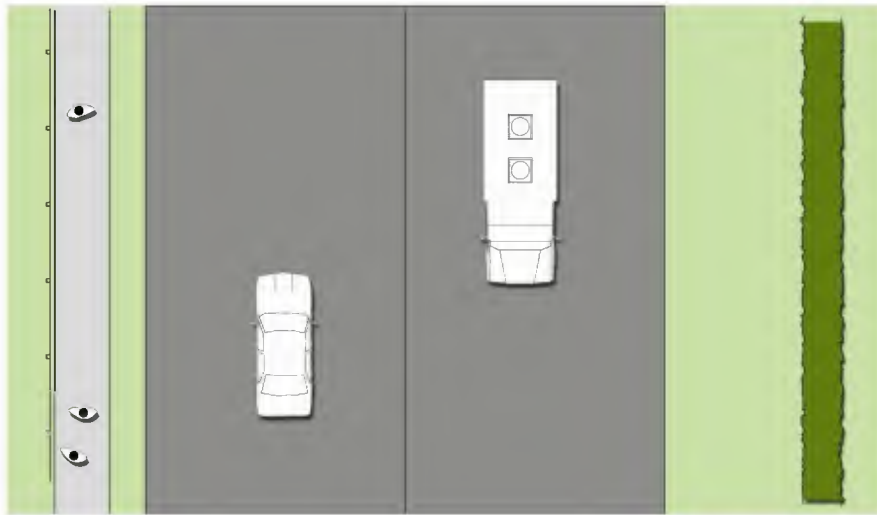
### 7.1.3 Entrance thresholds

The strategy for the Wairau-Awatere settlements proposes entrance thresholds for Wairau Valley Township, Spring Creek, Seddon and Ward. These were well-received by NZTA in principle.

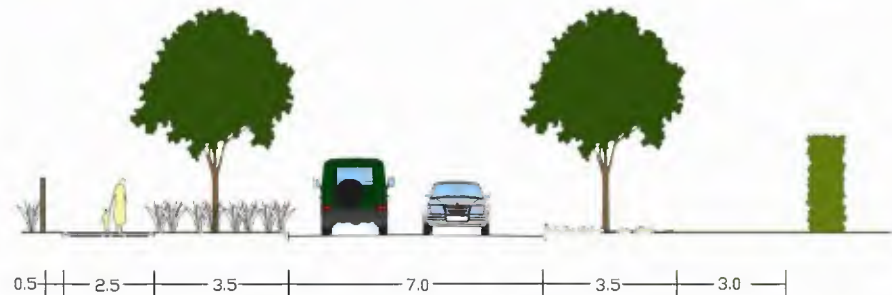
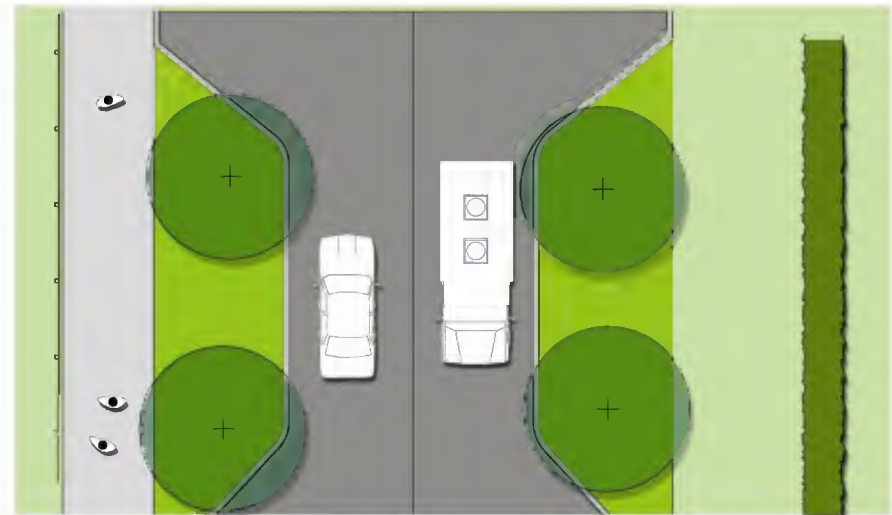
It is proposed to locate similar elements on State Highway 6, one on the northern end of Rai valley and one on the southern end.

These proposed elements consist of planters that narrow down the carriageway significantly ('pinch points') and notify drivers of vehicles that they are entering the urban area of the township. Arguably more so than traffic signs, this will assist with speeds being lowered.

The entrance thresholds will carry a signature Marlborough-theme in their planting and signage, which makes them recognisable across the entire Marlborough District. A specific Rai Valley 'flavour' could be added.



ABOVE FIG. 7-2: existing cross section of State Highway 6 at the entrances of Rai Valley (approximate dimensions only)



ABOVE FIG. 7-3: approximate cross section of the proposed entrance threshold in Rai Valley

## RAI VALLEY

### 7.1.4 Implementation schedule of actions

Ref.	Page	Action	Type of project	Timeline Short: 0-2yr; Medium: 2-5yr; Long: 5yr+.	Priority High; Medium; Low.	Comments
RV-1	133	Create entrance thresholds on SH6 keeping with a Marlborough theme	Physical	Short	H	
RV-2	132	Construct a pedestrian refuge in the indicated position on SH6	Physical	Short	H	
RV-3	132	Create a footpath on the western side of SH6	Physical	Short - Medium	M	
RV-4	132	Investigate improvements to the access and recreational use of conservation land and the area around the river to the east	Administrative	Short	H	
RV-5	132	Investigate potential long-term future for derelict mussel factory site	Administrative	Short	M	