

Strategy:

1

# Connect Main Road to Marina

**Initiatives aimed at improving the connectivity between the Village centre and the marina and waterfront**

**This strategy includes the following findings and proposed initiatives:**

- Improving the visibility of the port and marina area from within the town centre
- Improving pedestrian connections between Main Road and the marina area
- Enhancing the visibility of Memorial Park
- Consolidating the campground
- Bringing more life to the waterfront by creating a setting for commercial development



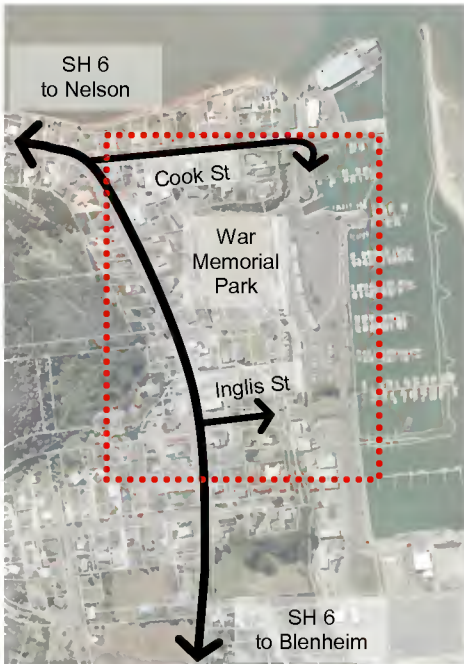
## CONNECT MAIN ROAD TO MARINA

### Havelock's 'hidden' waterfront

Havelock is located on the route between Blenheim and Nelson. This route is frequently used by tourists. When driving through Havelock it is easy to miss one of the town's main features: its waterfront, consisting of a both marina and a working port.

Figure 6-1 indicates the two vehicle connections that currently exist between the Main Road and the waterfront: Cook Street in the north and Inglis Street in the south.

War Memorial Park is a key community facility for Havelock, located between the Main Road and the waterfront.



ABOVE FIG. 6-1: Town centre to marina

### Proposed master plan

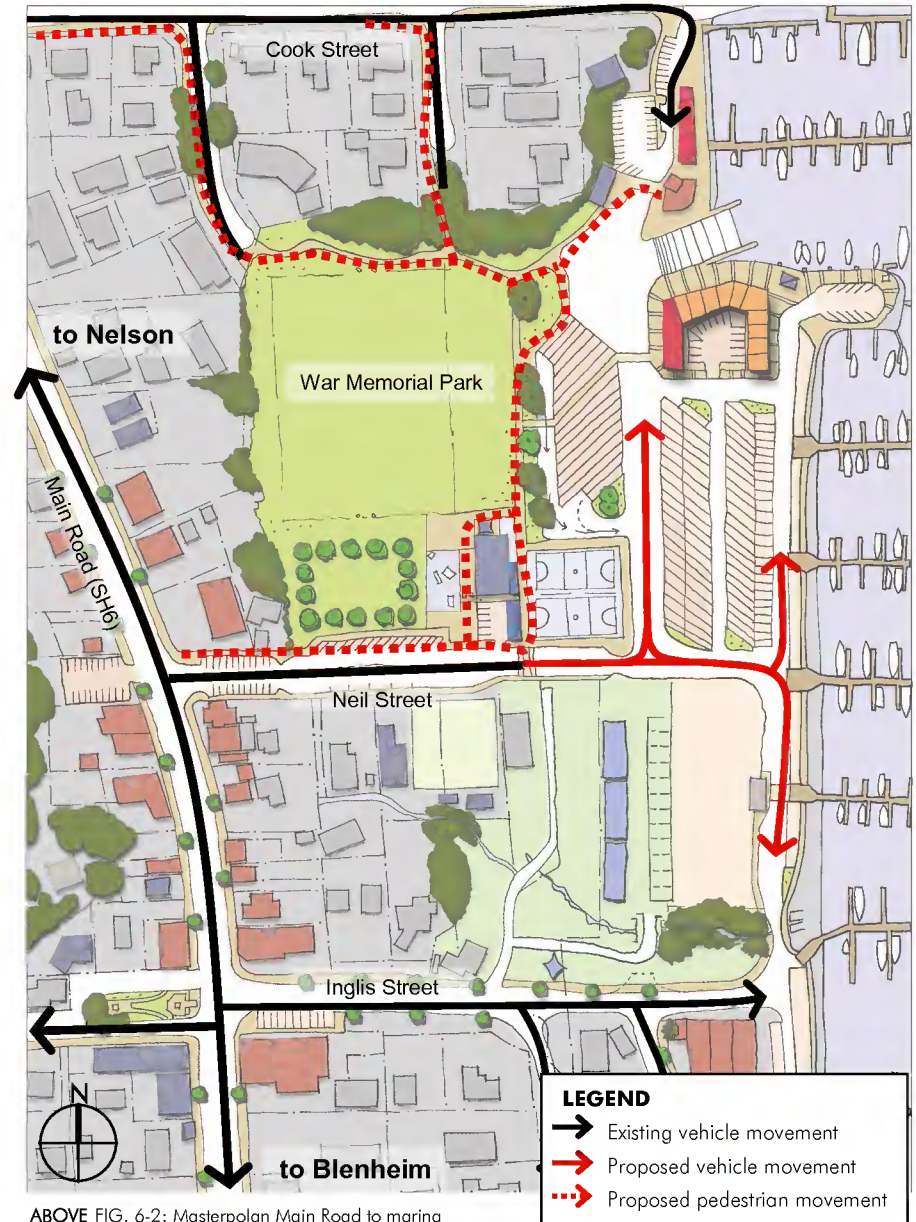
A master plan is proposed for the area around War Memorial Park and Neil Street. Its main aim is to improve and enhance physical and visual connections between the town centre and the waterfront. It is shown in Figure 6-2.

Key elements of the plan include:

- Extending and upgrading Neil Street to connect the Main Road with the port/marina area.
- Removing the majority of the boat sheds currently located on the western edge of the port area.
- Relocating the netball and tennis courts from the southern side to the south-eastern side of War Memorial Park to open up vistas across the park.
- Replacing the sports court for a community green for markets and events as well as overflow camping in peak season.
- Consolidating the camping ground to limit its extent to the southern side of Neil Street.
- Establishing a network of walkways connecting Main Road, War Memorial Park, the marina, Rose and Peel Streets.

The above elements are also aimed to create the conditions for a viable commercial development on the foreshore, including new retail, restaurants and cafes, and possibly office space. It is crucial that this development will include a public open space upgrade to create a truly public and vibrant waterfront.

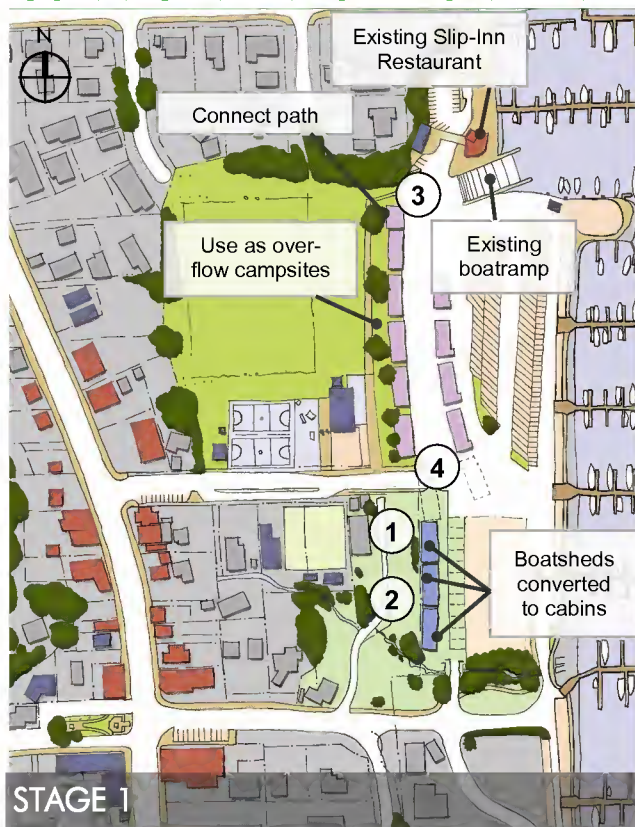
It is proposed that this master plan will be implemented in stages. The stages and the elements of this plan are presented in more detail on the following pages.



ABOVE FIG. 6-2: Masterplan Main Road to marina

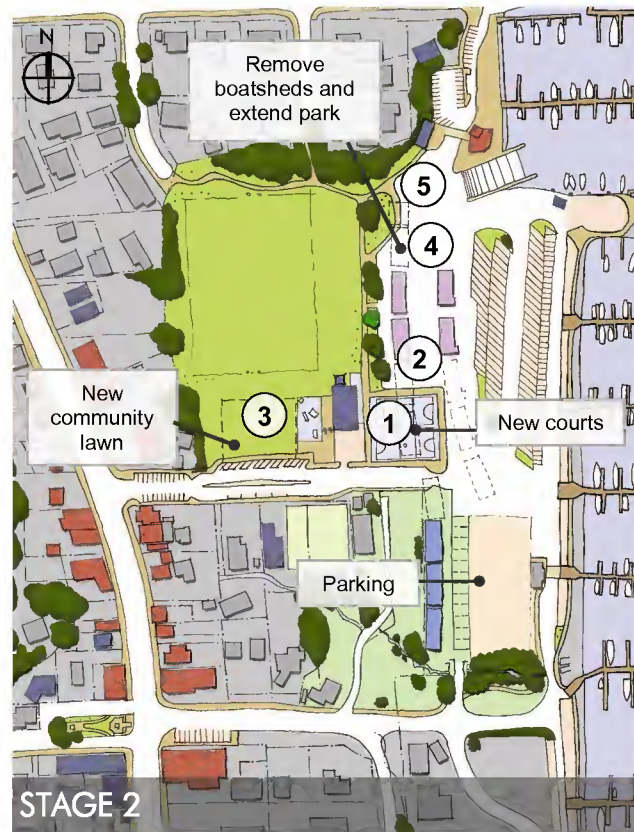


## CONNECT MAIN ROAD TO MARINA



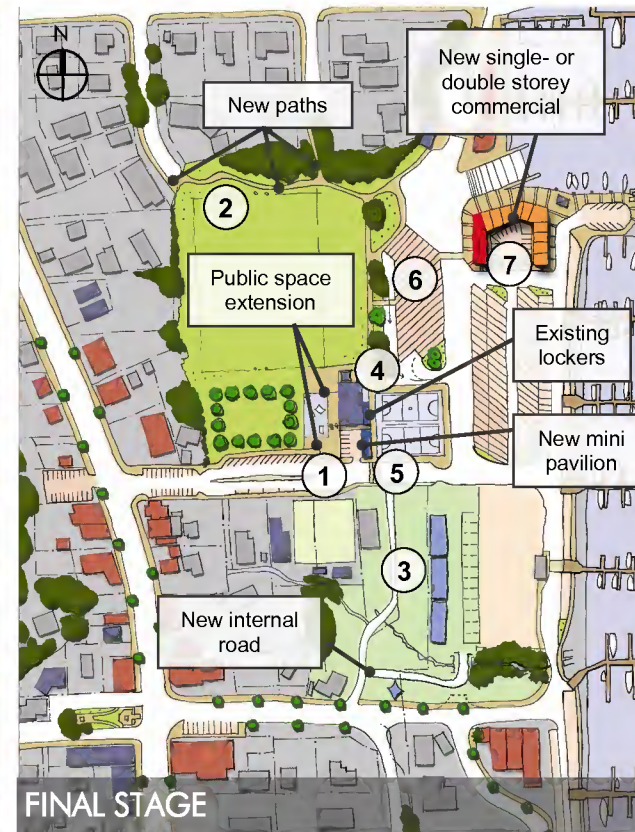
This stage consists of the following steps (refer to the numbers above):

1. Camp ground extension
2. Refurbishment of three boatsheds into between 9 and 30 cabins (more details on how this could be done overleaf)
3. Connect path on edge of War Memorial Park
4. Remove two boatsheds and connect Neil Street to the port/ marina area



This stage consists of the following steps (refer to the numbers above):

1. Remove four boatsheds
2. New sports courts
3. New community green (market, events, informal sports, overflow camping)
4. Remove two boatsheds
5. Extend park



This stage consists of the following steps (refer to the numbers above):

1. Extend public space around the Memorial
2. New footpath connections northern end of War Memorial Park.
3. Internal camp ground changes
4. Construct locker room
5. Construct pavilion
6. Construct trailer parking
7. Development on the waterfront

## CONNECT MAIN ROAD TO MARINA

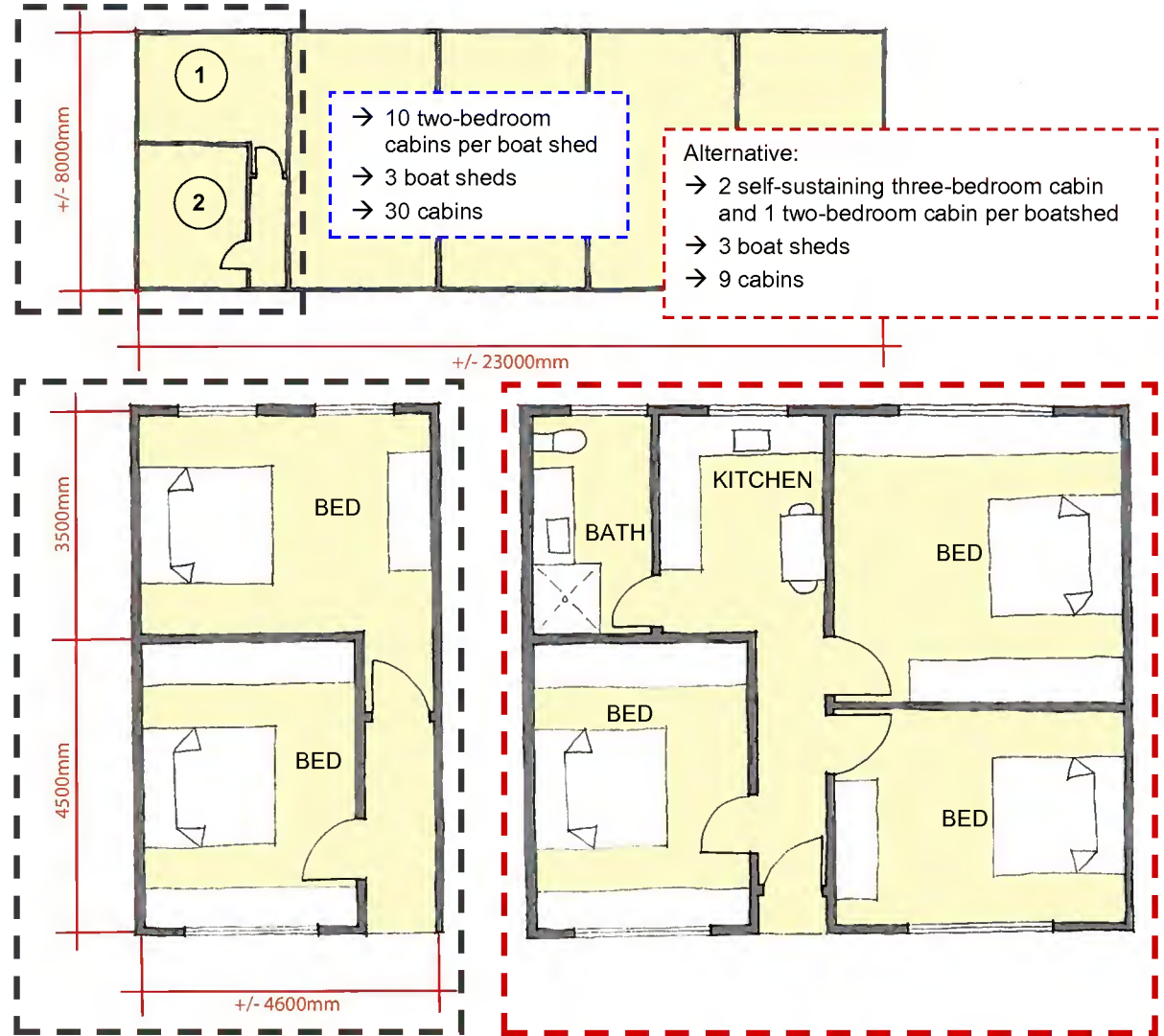
### Conversion of the boatsheds

Some of the boatsheds that are located on the western edge of the port area could be refurbished into cabins for visitors.

There are three boatsheds that are located in an ideal position to become part of the campground (Fig. 6-3). The sheds are approximately 23m x 8m and there are several ways to convert these into 3 to 10 cabins. Two conceptual options are shown in Figure 6-4.



ABOVE FIG. 6-4: location of the boatsheds that could become part of the campground



ABOVE FIG. 6-4: options for the refurbishment of boatsheds to camping cabins



# CONNECT MAIN ROAD TO MARINA



Artist's impressions of how the implemented master plan could look

