



**MARLBOROUGH
DISTRICT COUNCIL**



Wallace's Drain dig out April 2024

**Information Update
Assets & Services, Property and Community Facilities
Department
16 April 2024**

Contents

Marlborough Roads	1
Local Road Asset Management Report – April 2024.....	1
NOC Monthly Activities (February Report).....	3
Operations Report (February Report).....	3
Projects	4
Marlborough Road Activities	7
Stakeholder and Communications (February Report)	8
Road Safety (February Report).....	9
Marlborough Roads Recovery Team Update – December 2023	10
People and Culture	10
Living Safely	10
Environmental	11
Environmental Highlights / Low Lights	12
Design Summary	13
Design Issues and Challenges	13
Construction Summary	14
Programme	15
Communications & Engagement	15
Progress Photos.....	16
Rivers and Drainage Section – Activity Report.....	18
Wairau River	18
Wairau Floodplain and Tributaries	19
Drainage.....	21
Floodway Reserves.....	24
Wither Hills	24
Investigation and Miscellaneous	24
Quarries	25
Services and Operations	27
Education Report – April 2024	27
Parks and Open Spaces Activity Report	29
Blenheim Parks	29
Renwick Parks	35
Awatere and Flaxbourne Parks.....	35
Picton Parks	35
District Cemeteries.....	37
District Memorials.....	38
Public Conveniences.....	39
Walking and cycling	39
Trees	40

Playgrounds	40
Park Bookings	41
Policy and planning	42
Rangers' Report	43
Road Safety Coordinator Update.....	46
Access & Mobility Forum.....	49
Property and Community Facilities Project Report.....	55

Local Road Asset Management Report – April 2024

(Information prepared by Amanda Smith)

R800-007-02

General

Renewal works have been continuing across the local road network, particularly with chipseal renewals. This programme of work should be completed this month.

A big effort has also been going into preventative maintenance in the means of crack sealing. A new method, called “fabric seals” is also being trialled on the network.

Recruitment continues for the replacement of the two Network Managers. Both roles have been vacant since 19th January. Applications close for the second round of advertising in early April.

The grape harvest is reaching completion. There have been 21 grape spills attended to so far this season. The majority of these spills have occurred on state highways.

Development of the Regional Land Transport Plan (RLTP) has continued in March and now has been adapted to align with the draft Government Policy Statement. The RLTP is on track for going to public consultation with the Long Term Plan.

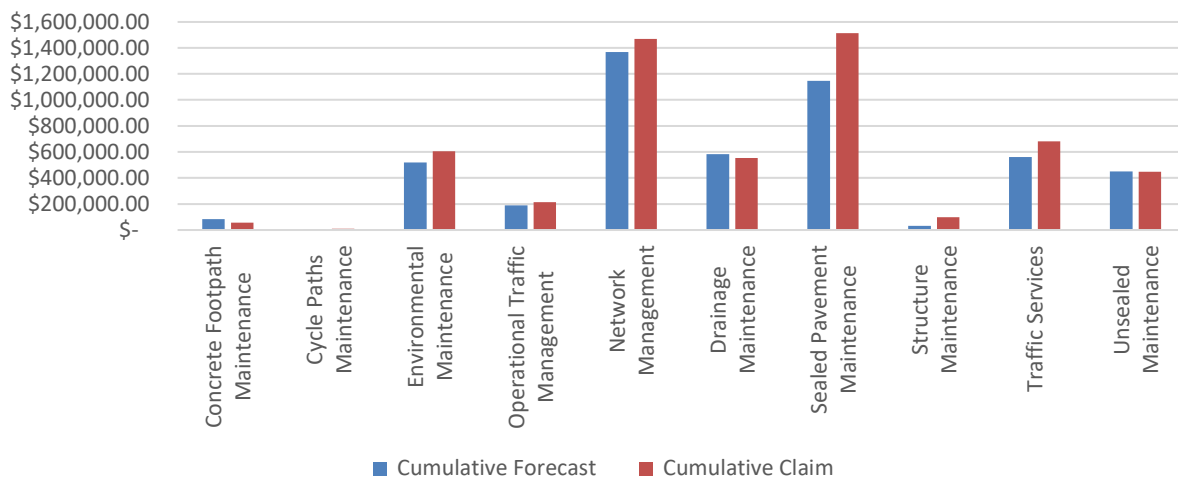
Financial Commentary

Achievement of February’s programme was 14.5%. The goal is for 80% achievement. The 20% allowance is for reactive works that come up during the month which cannot be programmed. These reactive works are generally covered within the lump sum maintenance costs.

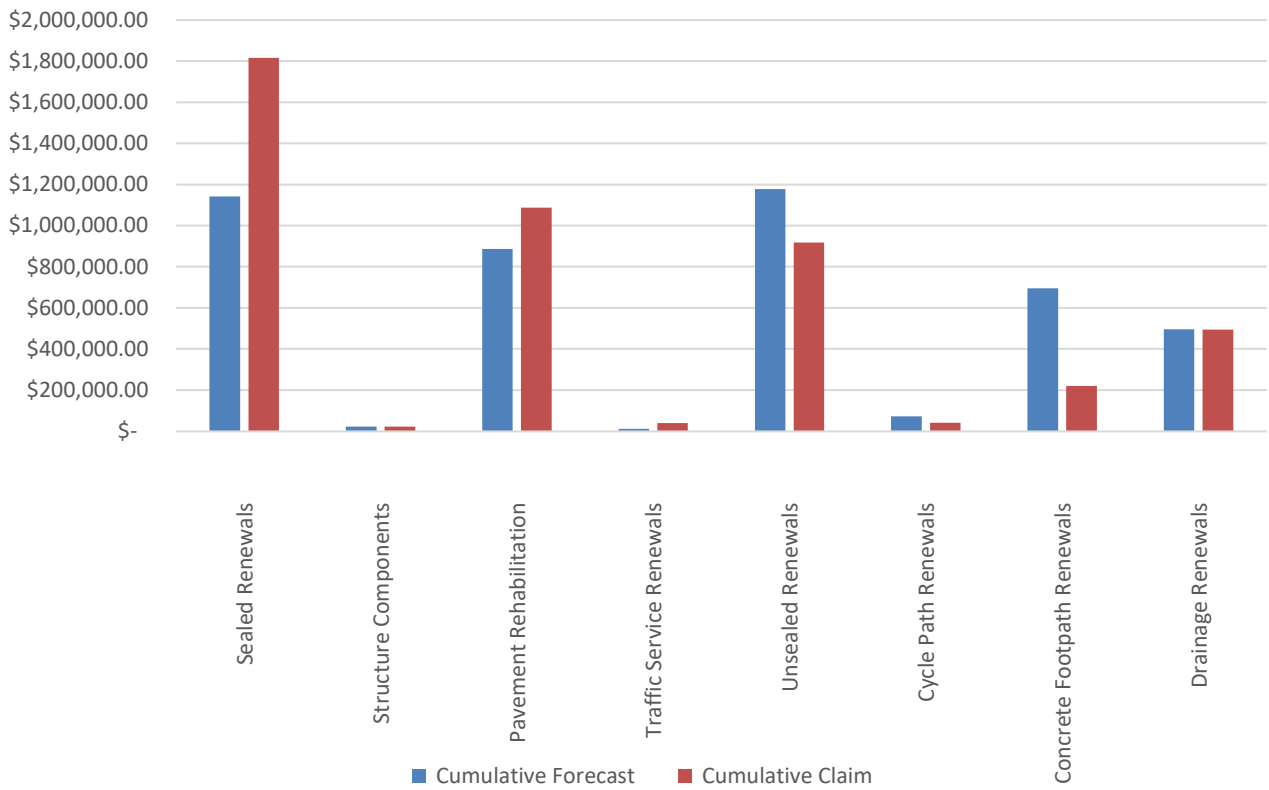
A large effort is being put forward for the next three months to complete the 2021-24 programmes.

The following graphs show the forecast budgets against the completed works for the Maintenance, Capital and Unsubsidised work for the financial year to date.

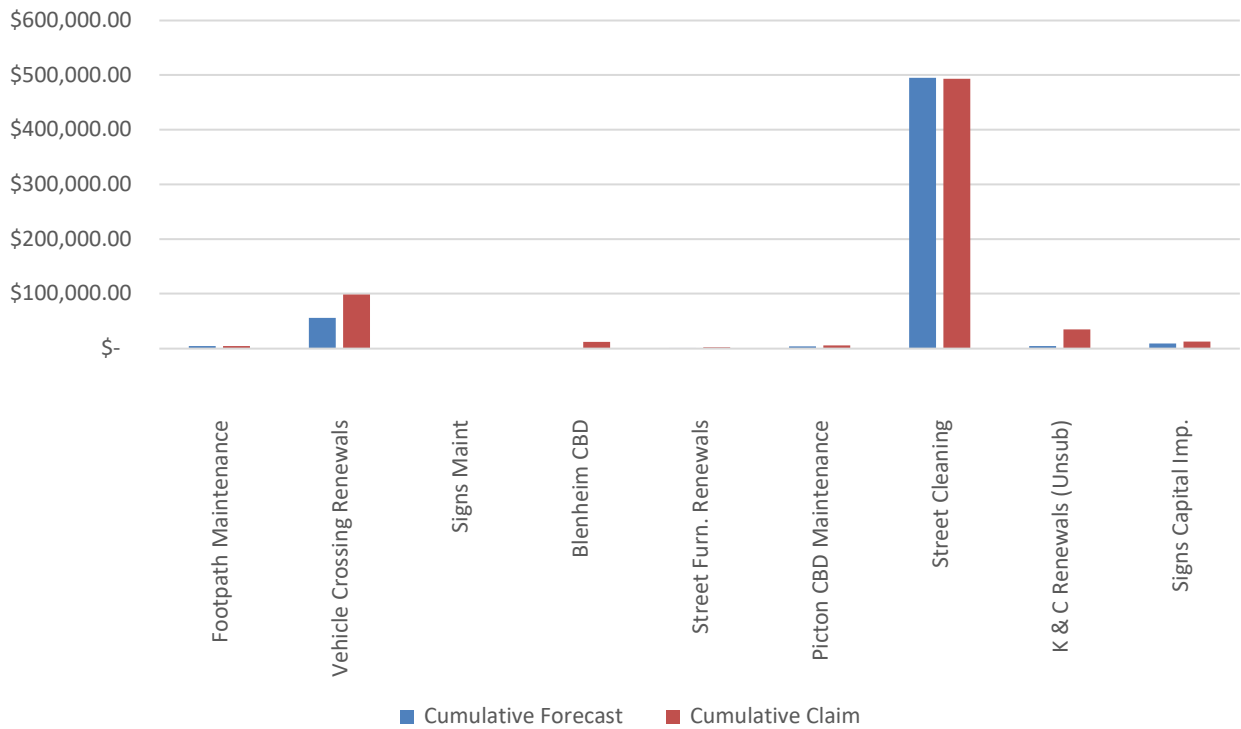
Maintenance - Forecast vs Renewal - To Date 2023



Capital - Forecast vs Renewal - To Date 2023



Unsubsidised - Forecast vs Renewal - To Date 2023



NOC Monthly Activities (February Report)

Summary from Contract Manager

The weather has continued to be on our side this renewals season with both the Fulton Hogan and HEB sealing crews on the network in February and start of March, for a strong end to the season.

The area wide pavement treatment programme is also nearly complete, with one site to be completed in March.

A focus across the network in drainage and is setting us up well for the winter. The crews' focus is on high lip surface water channels and culvert clearing.

The team continue to come together well, with more new recruits lined up to join in the upcoming months, to further reinforce them.

A two-day workshop was held for the truck rollover working group, which included people from across the industry. There has already been some great learnings and outcomes from this group, and this will continue to be a focus.

The annual pre-Harvest workshop was held this year, with our presentation on completed work sites, grape spill effects and sites of high grape spills well received by the industry.

This month saw the New Zealand Guide to Temporary Traffic Management (NZGTTM) trial in effect on resealing sites in the Sounds, as we continue to work through ideas, examples and lessons learnt to help with the transition.

It's also great to see the downward trend in customer request data compared to previous years. This is a good gauge to quickly see that the efforts put in around the network are being noticed and that the general quality of the network is getting better.

The Asset Team have done well to prepare and present the next 3-year NLTP.

Data is being collected to support discussion and workshoping of the next 3-year lump sum reset. Lessons learnt from the previous one, have helped with the data collection to ensure best outcomes are achieved.

The environmental team have been working closely to secure aggregate supplies and extraction for this coming season and years to come. Several changes in this area have added to the work required and we still have a way to go to get this confirmed. Changes with historic gravel extraction areas due to aquifer levels is currently under review with Marlborough District Council.

Operations Report (February Report)

Summary from Operations Manager

Monthly Programme Summary

The focus this month is to confirm the programme and have lump sum and renewal activities approved in RAMM, to the end of June 2024.

- The majority of the annual remark is complete, however there is one dispatch per road with multiple claim lines, with some roads 90% completed and one claim line remaining. This occurs when the Type A markings are completed ahead of the Type B machine markings.
- The crack sealing quantities have been achieved
- Chip sealing completed, but not claimed in RAMM

The Q3 (January-March) focus was on;

- Footpath renewals

- State Highway stabilisation patches
- Low Cost Low Risk – Wairau Bar Road
- Finishing the culvert renewals
- Finishing the reseals
- Starting the unsealed road pre seals for the wearing course season
- Completing the area wide pavement treatments/rehabilitation programme
- Barrier repairs

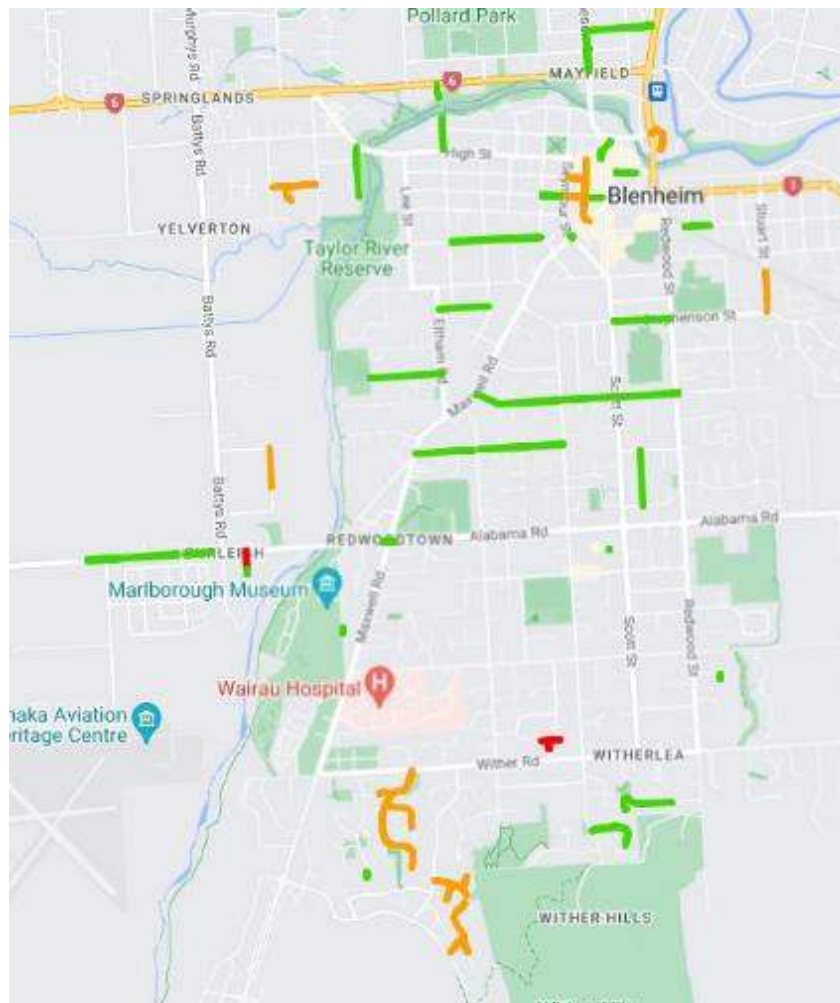
Projects

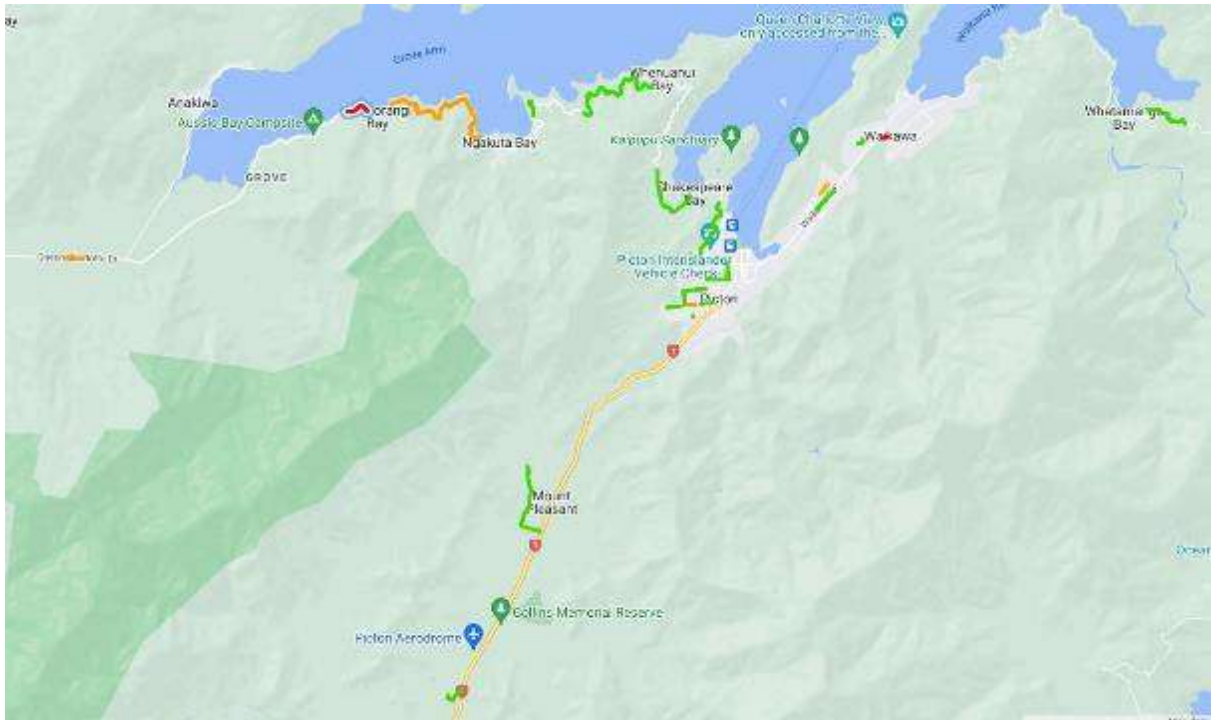
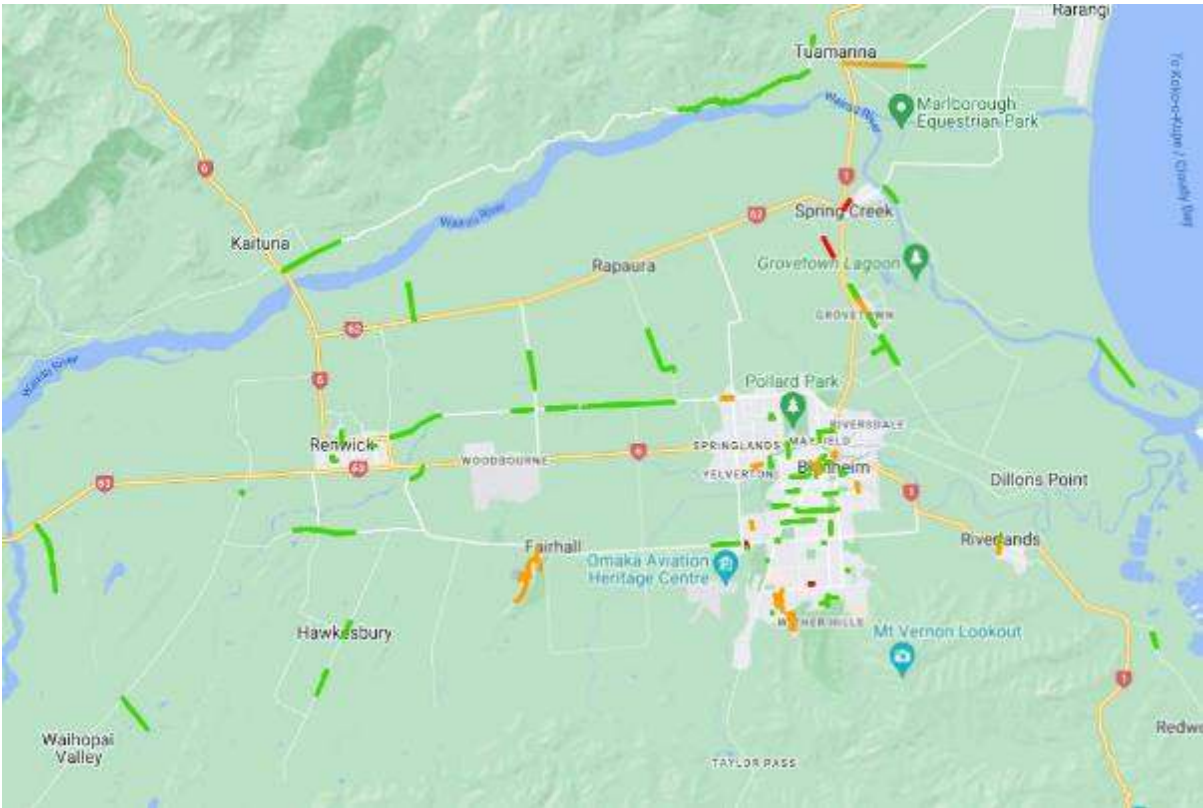
Local Roads

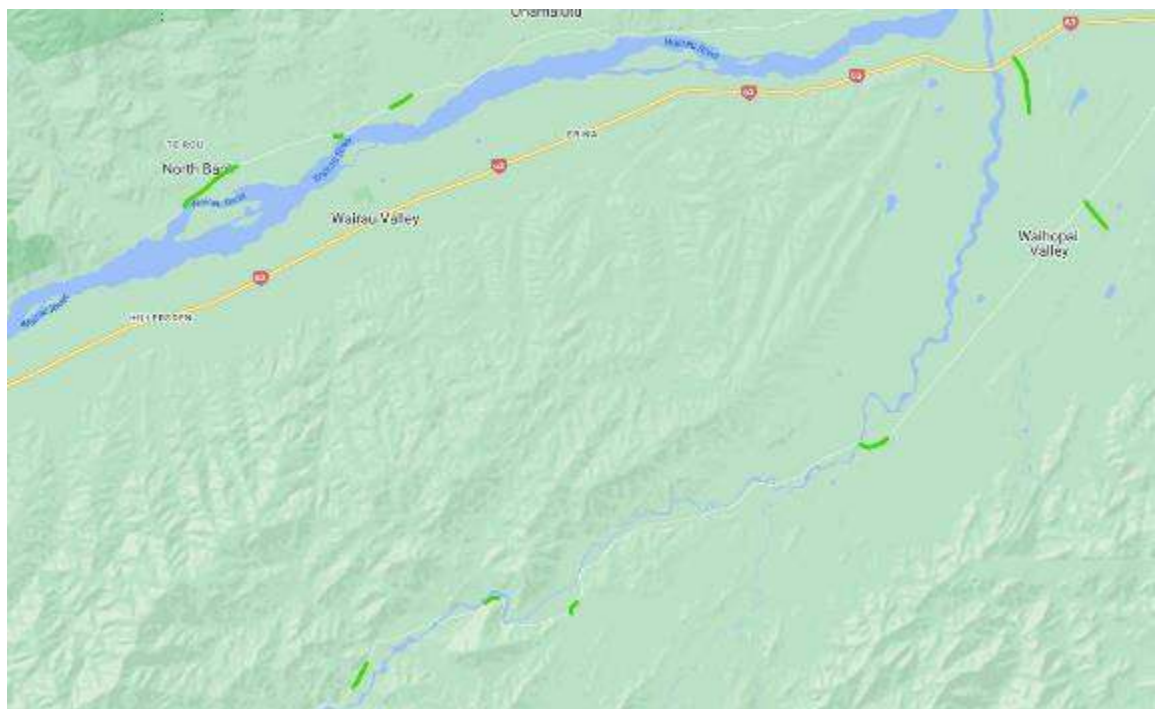
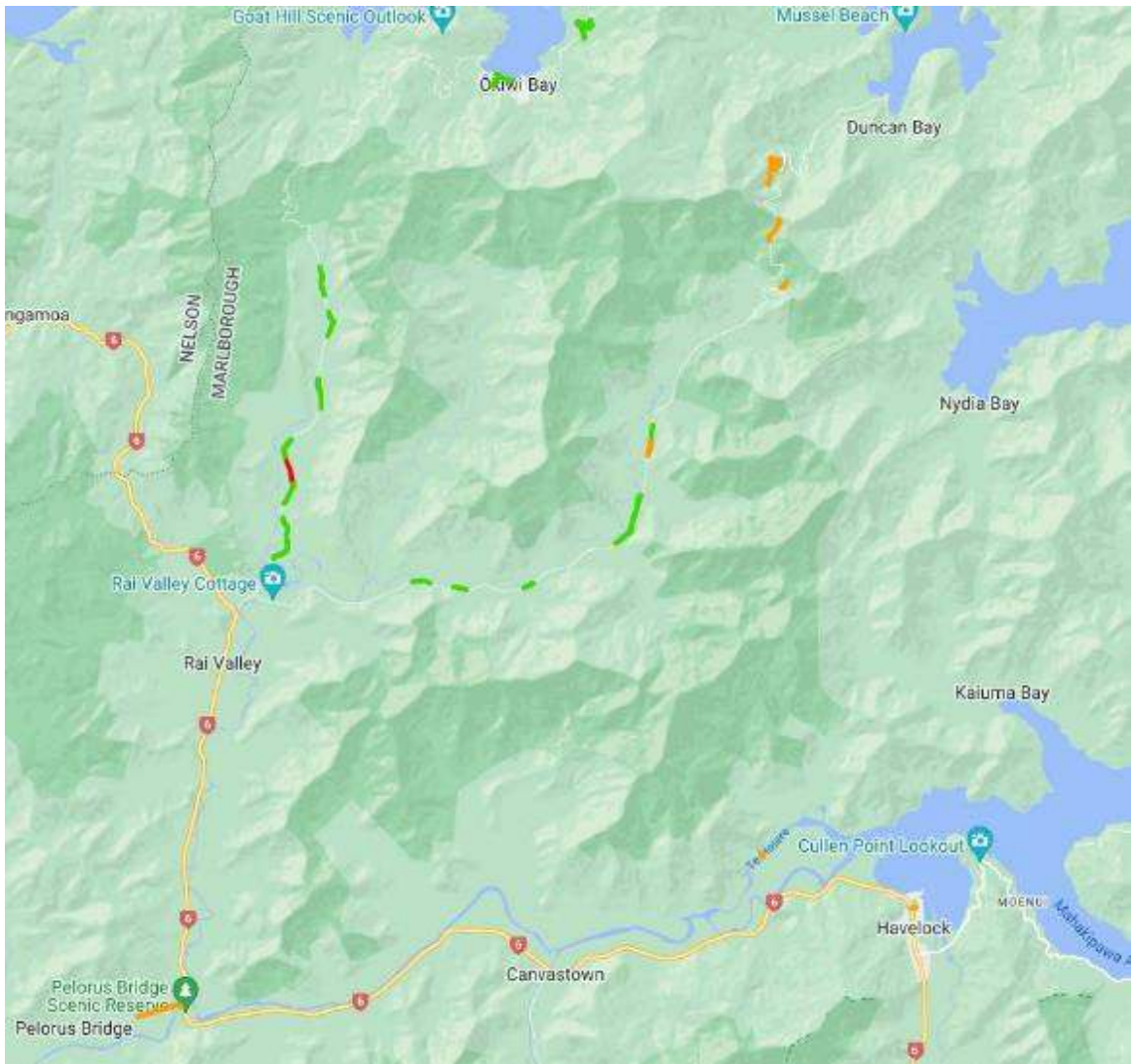
Renewals

An extension requesting to complete renewals work outside of the season (Oct-Mar) has been received and is being reviewed to allow for the completion of the renewals programme on local roads.

The following plans show the Local Road Renewal Sites for the 2023/24 year.









Footpaths

The Asset team are using the recently completed condition assessment work to determine the 2024-27 Footpath Programme.

Marlborough Road Activities

Whale Trail

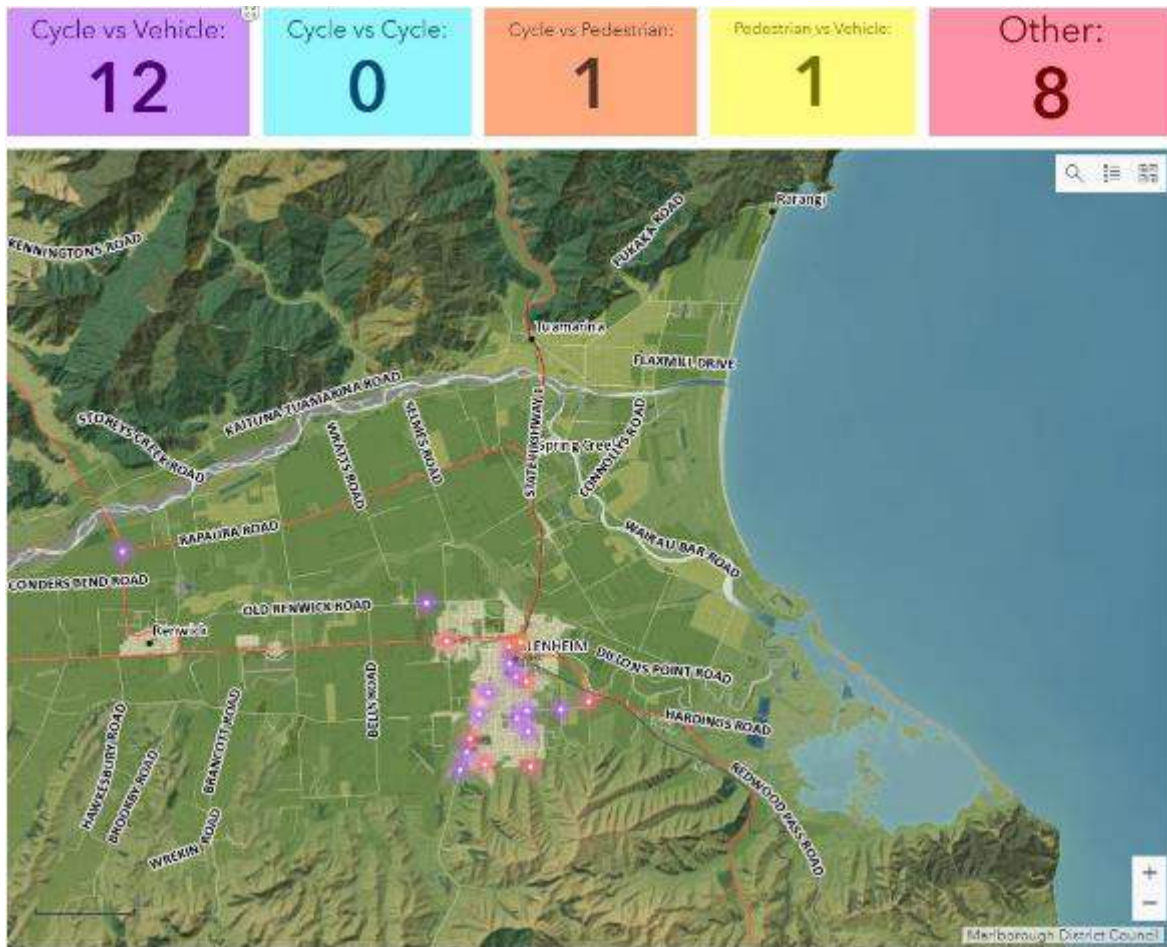
The formal opening of the Tua Marina stage of the trail was held on Sunday 24 March with a dawn blessing with Ngāti Toa, Te Rūnanga O Toa Rangatira and Ngāti Rāua being present. The new section of trail is appearing to get good use already.

Regional Land Transport Plan (RLTP)

There was a further workshop with Councillors on the RLTP, on Tuesday 12 March. Good discussion was had around the further development of this plan. The release of the draft Government Policy Statement (GPS) on Monday 4 March provided further direction and the decision was made to take the opportunity to tweak the RLTP accordingly to align with this. The Regional Transport Committee meeting on the Tuesday 26 March was used to confirm the draft RLTP. Confirmation of priorities and some minor changes to wording were taken away from this and will be circulated with the group by Laura Skilton.

The RLTP is on track to be consulted in conjunction with the LTP.

Bike/Walk Crash and Near Miss Dashboard – July 2023 to March 2024



Stakeholder and Communications (February Report)

Summary from Communications Manager

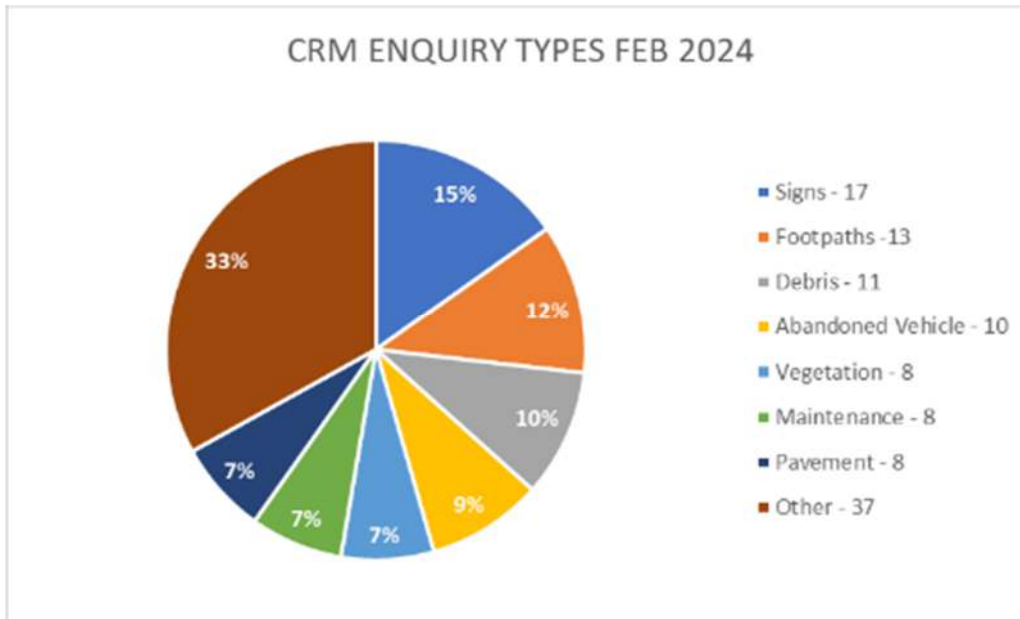
Summary for February

The total number of customer enquiries in February was 112, an increase on the previous month with 67 CRMS in January 2024. Enquiries were also up when compared with February 2023 with 106 CRMS. Of the 112 CRMs, 89% were for local roads, with 100% resolved.

The highest number of enquiries were for signs with 17 CRMS in February 2024. This is an increase on the previous year, with 10 signs enquiries in February 2023. One of these enquiries was a compliment (see below for details) the rest of the increase can be attributed to an increase in vandalism of signs in the last month.

Also of note is the increase in abandoned vehicles to 10 in February 2024, compared to three in the previous year.

Please note, descriptions are as per CRMS categories.



There were two complaints received in February both regarding delays at worksites. One complaint was for French Pass Road.

There were four compliments received in February for bridge works on Opouri Road, dust suppressant on Tapps Road, a pothole being fixed on Colemans Road and a Pukeko sign on Queen Charlotte Drive/ Havelock being moved.

Two customer call backs were completed in February. The average score was 5 (with one being very poor and 5 being very good) for the level of service received by the MRJV Team.

There were 32 letterbox drops to a total of 1,760 residents and 30 Antenno and Alerts sent in February to notify residents of upcoming works.

Future Month Focus:

- Final month of renewals notifications
- Social media and media policy awareness for staff
- Instigate staff noticeboard to increase internal communication.

Road Safety (February Report)

Local Road Crash summary:

The Contract has had one DSI crash on the Local Road network recorded in CAS for February 2023.

Marlborough Roads Recovery Team Update – December 2023

The construction programme is now at its peak with multiple complex sites having started on Queen Charlotte Drive. This road is now a hive of activity with 7 active complex sites at time of writing. This peak in the construction activity will continue until the end of April which is when the workload on the team will reduce. We are working with MDC to potentially commence the minor works programme of Phase 3. Failing this, the team will assist the Design Hub with the development of the Simple design solutions for Phase 3.

Design Hub had to prioritise their works through February due to Phase 3 scope review, causing some of the Phase 2 packages to delay, more on this in the programme section of this report. The duration of on-site review in mainly the Kenepuru zone was longer than originally estimated, and the amount deliverables required for the final phase 3 funding request has increased over the last months, taking away more resource than originally planned. Additional resource has now been seconded into the Design Hub to deal with this workload and to get set-up for Phase 3. The client and assurance have organised additional resource to assist with the procurement planning of Phase 3 and the Level of Service document development.

The handover process is underway and being discussed in more detail recently, therefore a separate section for Handover has now been included in this report.

The Marlborough Roads truck roll-over prevention work group has continued their efforts through February and have given the NOC JV board an update on progress during their board meeting on the 6th of March. Good feedback on the process and findings has been received so far and the work group will continue with their investigations and generation of solutions for final presentation to the NOC JV board in May this year.

People and Culture

To assist with the design planning of Phase 3, Gina Yukich (WSP) is seconded back into the team. She was heavily involved with the Design Hub through Phase 1 and the early stages of Phase 2. She is currently planning the large scope of 'Simple Solutions'. Richard Quinn from Resolve Group has been engaged by the client to assist with the development of the procurement plan for Phase 3. Lastly, Ehsan Mehrnia (FH) who was previously part of the team as the QA engineer, is assisting the team on a part time basis with the Handover to BAU process.

Unfortunately, Joyanna Winn (Safety Advisor) has taken on another opportunity and has left Marlborough Roads at the end of the month. The NOC is currently working on filling this role. In the meantime we have assistance from Nathan Karst, Safety Advisor based in Canterbury, assisting our team with the on-site safety reviews during this busy period.

Living Safely

Subcontractors

In the month of February, we completed two inspections which maintained our subcontractor inspection schedule for Marlborough Roads Recovery. The inspection showed a high level of risk management with suitable controls implemented to manage relevant risks. We provided thirty-two inductions to new workers as required. We also reviewed the level of risk control and worker competency was appropriate for the works being undertaken

Injuries and Incidents

During the month of February, we had one incident recorded.

Leadership Safety Actions

In February, we had 51 leadership safety actions logged, with a target of 53. Leadership Actions are a good way of demonstrating the dedication and commitment our team has towards the Health, Safety, Quality and Environmental considerations for workers in the field. This is a positive reflection of a good safety culture within the Marlborough Roads Recovery team.

The **Blue** line indicates our target minimum LSA requirement for the month and fluctuates depending on the number of supervisors working in any given month. The **Orange** line indicates the achieved number of Leadership Safety Actions completed in each month.



Environmental

Consenting Progress

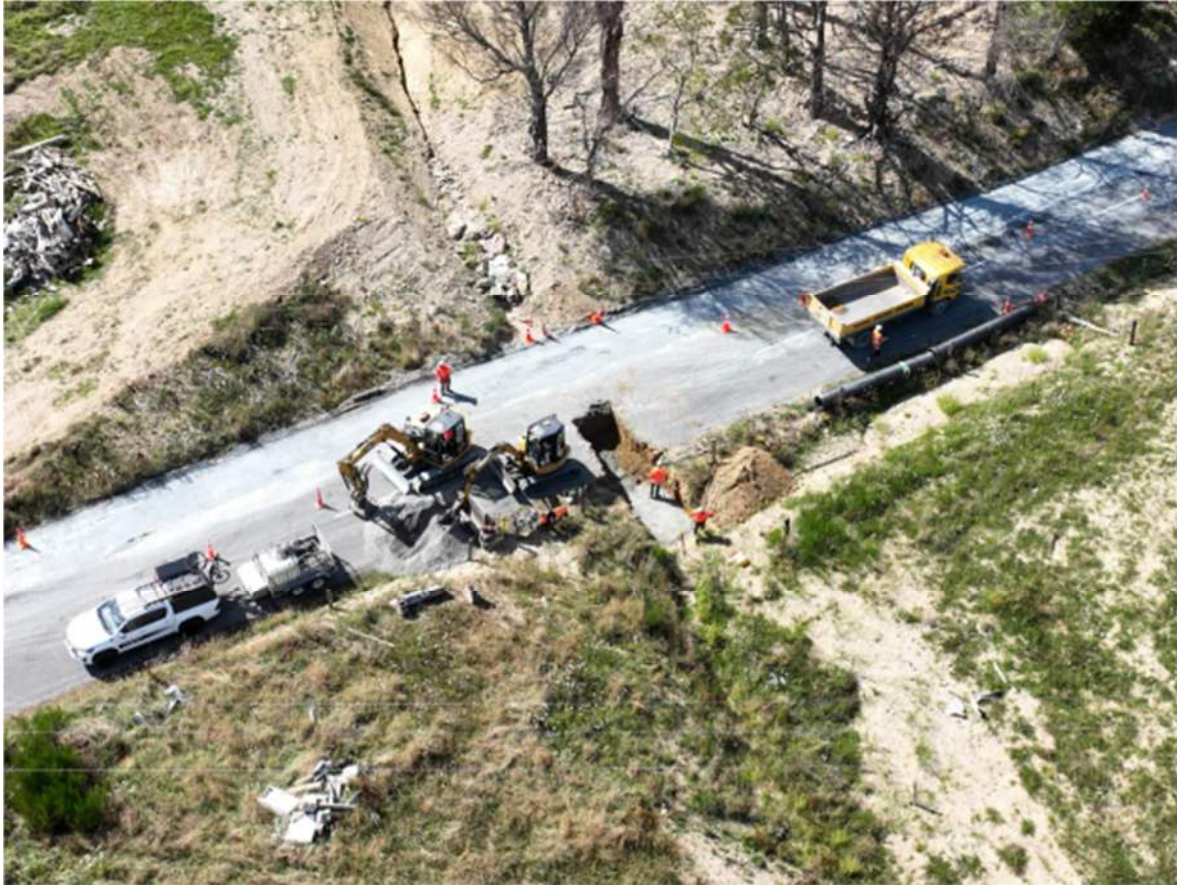
- The s127 variation for completing the Titirangi Clean Fill expansion was submitted just prior to the Christmas shutdown and receipt from MDC confirmed. Now in processing with Council and working through further information requests.
- The Waitata Bay rock / gravel extraction retrospective consent application has been submitted by WSP and further s92 requested from MDC responded to.
- Wilkes Resource Management are working on the retrospective consent application for the clean fill on Croisilles-French Pass Road at RP 29.6 alongside an approved volume from the farm operator for future filling should it be required, and a new application for clean filling at RP 13.3. Approval from DoC has now been obtained for the site at RP 13.3 – Squally Cove, waiting for Council to finalise.
- Wilkes Resource Management have consulted with MDC on the Akerbloms Road / Punga Cove stormwater realignment with MDC Consent / Planners now indicating that Resource Consent is not required for the works to proceed as designed.
- Wilkes Resource Management have begun working through the issues to be assessed for the Torea Bay boat ramp. They are waiting further instruction from the Recovery Management Team as to how to proceed based on the issues highlighted with community feedback and the requirements on aquatic ecological assessments needed.
- Permission obtained from MDC Consents Manager to be able to undertake Daltons Bridge pier protection under emergency works conditions for machine access to the waterway, with works to commence at this location on 6th March. Ngāti Kuia have been kept up to date with the schedule of these works due to the cultural significance of Te Hoiere to them, and due to the ongoing Te Hoiere Restoration Project occurring.

Environmental Highlights / Low Lights

- Highlights:
 - Sites visited by the Environmental Advisor during February included the Moenui Box Culvert and Aussie Bay retaining wall sites, the Ure River scour repair sites and the Ronga Road drainage improvements at the 'house slip' site.
 - All sites showing good knowledge of the environmental risks at their sites, with the Aussie Bay and Moenui Box Culvert sites showing good sediment control set ups, and the Ure Scour repairs operating well to avoid risks to the bed of the river (e.g. fuel storage).
- Lowlights:
 - Rock armouring work at Noels Bridge was undertaken, however due to the re-construction of this bridge being under a separate resource consent to the Zonal Consents for Northbank, there could have been a need to undertake items under that resource consent which may have been missed.



The Aussie Bay site with well installed sediment fence at the bottom of the work site, and secondary protection of hay bales used during concrete pouring and before slope stabilisation is completed.



Works underway at the Ronga Road 'house slip' to improve the drainage

Design Summary

Design Issues and Challenges

Priorities

This month priorities have been challenging to juggle with non-BAU Design Hub tasks with non-BAU forward focus tasks.

Phase 1 and 2 progress unfortunately suffered due to the above. The focus has been on the critical path to ensure minimal overall programme impact, although slippages within the design programme have occurred.

With the scoping of Phase 3 now mostly completed, resource can now be allocated to Phase 1/2 again.

Phase 2 overview

As of end February, complex designs for 18 out of the total of 57 faults are outstanding, with the last packages being closed out in July. The outstanding packages are the ones of which progress has been impacted during Phase 2 for several reasons that are hard to foresee:

- Complicated stormwater catchment designs requiring easement and community considerations, high level of MDC input needed.
- Bespoke railway iron designs by different consultant that the original railway iron designs
- Land acquisition

- Peer Review
- Fault category change from Simple to Complex during the process
- Bridge designs needing Rivers and MDC input

All Phase 2 “BAU” designs have been completed and have been handed over to the Construction team.

Prioritised Phase 3 sites

8 Phase 3 complex sites were deemed higher priority by MDC who have given the approval for the design and construction of these sites. Designs for these sites are now progressing.

Phase 3 Preparation

The development of a procurement plan for Phase 3 is underway with the target completion by the end of March. This document sits under the already approved procurement strategy and will outline in more detail how the value for money principles of the Procurement Strategy will be met through Phase 3 by focussing on the lessons learnt from Phase 2.

Construction Summary

Progress Update

Overall outstanding Priority 1 faults down to 66 or 14% remaining to complete. Of the 75 Sites 17 sites have a percentage above 75% & 11 of these are at or above 90% indicating that only minor items like, snagging lists, hydroseeding, brushwall construction etc still has to be completed. With the remaining sites now generally being complex design sites to complete, the total fault numbers outstanding will see a slower pace in reduction.

Queen Charlotte Drive became a hive of activity this month peaking at 5 recovery crew working consecutively with the addition of BAU also carrying out their sealing programme on top of this.

Construction Issues and Challenges

Maintaining the forward work quantum in front of the crews remains a concern come April/May the main designed sites will be completed or well advanced so subcontractor resource will need to reduce if minor works sites cannot be advanced.

Subcontractor Performance

All subcontractors performing well. No current urgent issues or concerns with our current subcontractors on the panel.

Handover

Handover of the completed sites and zones is underway for the Phase 1 and 2 completed works. Our team has worked together with BAU to come up with a detailed handover plan based on the high-level approved sketch map.

Financial

The February claim reflects an increase in construction activity for the month, as works start ramping up following the progression of designs for various sites.

As per the cashflow, the upcoming months are expected to see increased expenditure with multiple complex designs starting in QCD and KEN. The actual cashflow is running lower than originally forecasted. This

cashflow was developed based on the November 2023 programme. A revised cashflow will be developed through March based on recent programme updates and procurement figures.

Remaining Budget

With the Phase 2 funding now confirmed the programme in total has approximately \$51.866M of budget remaining to cover both physical repairs, design, client-side costs etc.

NOTE: At the time of writing this report the client-side costs spend is only up to January so the actual value will be slightly less.

Financial Forecast

The overall forecasted MRRT cost at completion for phase 2 works only is at \$34,30M excluding client side costs and storm related damage BAU claims as per the breakdown below. We have since been provided the approval for the inclusion of the construction of 8 phase 3 sites which will be funded from the phase 2 funding. This adds an additional \$7,83M to the forecast. Including client side cost and BAU claims the total Phase 2 forecasted cost at completion sits at \$52,38M. This is about \$2M less due the agreed removal of the Holding Cost (Phase 2 funding) from the forecast.

With a remaining funding budget of \$51,866M, the expected surplus has now at \$13.10M.

Programme

Fortnightly progress updates are continuing, with now the end of month update being discussed at a meeting with the client and assurance. The mid-month update is being shared through emails.

Progress Update

Due to the Phase 3 site reviews and procurement / delivery planning, the design hub team was under resourced through the month of February meaning that multiple design package has slipped. The focus has remained on critical path although movements are seen within the overall delivery programme. With Phase 3 first reviews now mostly completed, design hub resource is mostly back to original levels to deliver and close out the Phase 2 design programme going forward.

In the design space, the design of 18 out of the total 57 faults remain with the last planned for delivery in July this year. The design progress of these remaining faults has been held up along the way due to factors hard to foresee at planning stages. All packages with a standard smooth design process have now been completed.

The programme critical path is still driven by site QCD-715-00242 (Pukenui Road Drainage Improvements) and has seen some slippage due to the higher level of MDC input required on this site.

Near critical is Craiglochart Bridge in the Waihopai zone which has seen movements during the design process due to the high level of MDC Rivers and Bridge Engineer input required.

Communications & Engagement

The weekly roading recovery e-newsletters continue to form the base of the regular MRRT communications, supported by updates on the Council's CDEM Map, and Antenno.

In February, the e-newsletters included information regarding the progress of works at multiple sites along Queen Charlotte Drive, notifications around upcoming closures at Cullen Point in late February, works along Kenepuru Road, the Northbank, Ward and updates on two sites in the French Pass area.

Customer interactions have increased slightly from the previous month with 28 enquiries in February, compared with 22 in January. These customer interactions have been recorded and will be shared with MDC for their record.

Of the 28 enquiries, the majority were regarding the Kenepuru Zone with 14 or 50% of enquiries. Eight of these enquiries were regarding access as an essential service provider with an additional five for general access. One remaining enquiry was regarding concerns around a culvert repair.

Eleven enquiries, or 39% concerned the Queen Charlotte Zone, of which ten related to the closure near Cullen Point, Queen Charlotte Drive, where the new MSE wall is currently being built. A further enquiry was regarding access to various locations to film along Queen Charlotte Drive, this was referred onto DOC.

This month there was one media story relating directly to the MRRT Project which was from an MDC press release regarding a delay with upcoming closures on Queen Charlotte Drive for the Cullen Point site due to a mechanical breakdown. Three further stories were published on Stuff, Radio New Zealand and BNN online regarding rates rises to assist in the funding of the repairs of the Marlborough Sounds roads.

Extensive notification was undertaken for the Cullen Point closure extension and completion of the closure including Facebook posts on the Marlborough District Council Facebook page which was shared on the NZ Transport Agency Waka Kotahi Top of the South page. A letter to affected stakeholders, community groups and emergency services, VMS, Antenno and Alerts and updates on the CDEM Map. The NZ Transport Agency Waka Kotahi also included it onto the Journey Planner for the duration of the closure.

The MDC Facebook post on 8 February on Queen Charlotte Drive Closures Paused, received 36 reactions (all likes) with 8 shares and 9 comments. A post on 1 March, at the completion of the closures received 38 reactions (all likes) and 5 shares.

Site visits were undertaken on Queen Charlotte Drive in February with the Top of the South Senior Communications Advisor for NZ Transport Agency Waka Kotahi. The purpose of the trip was to obtain content for social media and internal publications to raise awareness of the recovery works.

Progress Photos





Rivers and Drainage Section – Activity Report

(Information prepared by Andy White, Frank Westergard, Gregor Punzel, Jan Dimmendaal, James Mills-Kelly, Geoff Dick, Duc Nguyen) R700-014-01

Wairau River

Flood Damage

Flood damage repair works have been completed in the Upper Wairau on the north side near Pine Valley. Two sites required attention. Gravel was beached against an eroded bank with a dozer. Additionally, local fairway clearing has commenced.

The second site required a rock top-up to reinforce the existing rock wall and prevent the Wairau River from breaching it. The Marlborough District Council contributed a portion of the costs for the rockwork.



Figure 1 - 350t Rockwall at top end of existing riprap structure

Wairau

With the Wairau River flowing at a low level, further fairway clearing has begun at the Waihopai confluence and is scheduled to conclude at the Renwick SH6 road bridge.

Lower Wairau

Peninsula Road had to be partially blocked off due to excessive firewood cutting. Concrete blocks were sourced from Ferry Bridge Carpark and replaced with timber railings, which had previously been installed around the main carpark.

Wairau Diversion

As temperatures ease into autumn, the Diversion camp has been fully mowed and reopened for public access.

Wairau Floodplain and Tributaries

Ōpaoa River

A works order for weed cutting in May has been issued and preparations are underway for the weed boat to begin cutting on 1 May.

Upper Ōpaoa

A fallen tree on the Holiday Parks fence has been removed and the fence has been repaired. Additionally, a willow tree obstructing the channel was conveniently removed while an excavator was on-site.



Figure 2 - Willow Tree that has been removed

A 23t digger equipped with a tree shear is clearing major willow blockages along the Upper Ōpaoa River. The landowner intends to plant native species around the riverbanks once the clearing is complete.



Figure 3 Cleared part of the Upper Ōpaoa River that used to be choked with Willow Trees

Are Are Creek

Young Willow spray works has been completed behind the Kaituna Sawmill.

Ruakanakana Creek (just downstream of Waihopai intake)

With the Wairau River flow below 8m³/s, the SVIS control gate has been shut off. Currently, water is only entering Ruakanakana through the Waihopai intake canal.

The Tyler Creek flow split has been cleaned out to remove weeds obstructing the control gate.

Waihopai above SH63

Fairway clearing across Mariscos in Guernsey Road is underway as well as beaching work against eroded banks as river has dried up in most places.

Wither Stream

A bucket roll in Wither Stream, upstream of McKenzie Street and between timber sleepers, has shown positive results. Drainage has improved with adjacent grassy areas appearing dry again.



Drainage

The autumn drain spray programme is currently in full swing. A hot, dry summer has seen prolific weed growth throughout the drainage network with the race underway, now that growth is slowing, to control and remove these weeds and restore full capacity to the network before winter rains arrive.

Routine maintenance completed includes clearance of Wallace's drain (pictured below) 515m and relaying of culverts and clearance of willow root obstructions in the flood-gated culvert through the stopbank.





Taylor River: Town Area

To address erosion on the true left bank by the Boathouse, riprap protection works have been carefully placed to prevent further damage.



Figure 4 - 13t digger placing riprap rock at Taylor River

Due to the Taylor River around Burleigh Bridge being dried up, channel alignment works have been completed to protect banks from erosion and also clear established vegetation.



Figure 5 - Centred channel in Taylor River around Burleigh Bridge

Rockwork has been placed to support undermined banks in Murphys Creek opposite the retirement village at Battys Road



Figure 6 - Rockwork Murphys Creek

Floodway Reserves

Regular autumn maintenance of floodway reserve land is also underway. Mowing, tazzing and weed spraying contracting crews have recently been able to begin work again as the risk of fire abates. Council is currently looking at options to update the lease agreement for Reserve 14 at Botham's Bend, the current lease for which dates back to 1970.

Wither Hills

With the extreme fire risk of the summer behind us, the Wither Hills Farm Park is now back open to visitors and regular maintenance can resume. Scoping work is underway to replace the failing Cobb Cottage water scheme, which supplies the eastern end of the farm park as well as several neighbouring properties with stock water. Capital fencing works and ongoing implementation of suggested actions from the recently completed fire risk management plan are planned over the coming months.

Investigation and Miscellaneous

Capital Works

Contract 22-216 Town Branch Upgrade – Connor & CMP Blocks

A contract was tendered in February for widening and upgrades of a 650m length of Abattoir Drain from the DeCastro subdivision to Town Branch pumpstation. The contract includes partial piping of Railway Drain and construction of three bridges.

The tender was won by Findlater Construction Limited and the works began in mid-March. The works are expected to be completed by the end of September, weather permitting.

The contractor has mobilised to site, commenced excavation for the realigned section of drain and is preparing materials and dewatering resources for culvert construction.



Figure 7 – realigned section of Town Branch Drain

Contract 22-223 Wairau Stopbank Realignment: Upper Conders

Taylor's commenced processing of gravel fill for the works in March and excavation for the new stopbank foundation will commence after Easter. Completion is programmed for mid-May.

Contract 24-007 Quarry Drain Culvert Extension

A minor works contract was tendered for this culvert extension which will enable an upgrade of the intersection of Pukaka Road with Pembers Road during the next construction season. The intersection upgrade is a condition of the resource consent for the Pukaka Quarry development. Gills won the tender and commenced works in late March.

Quarries

Pukaka

Extraction of the previous shot at the west knob working face is complete with small stockpiles of rock for incorporation in flood damage repairs during April. A further shot will be undertaken later in April.

All activity is currently focussed on completing an all-weather access road to the top of the quarry prior to winter. The lower section of the road is nearly to grade and the top bench of the quarry is beginning to form.



Figure 8 – lower section of new haul road taking shape



Figure 9 – top bench forming

Services and Operations

Education Report – April 2024

(Information prepared by Annie McDonald on behalf of the education team of Annie McDonald, Angela Wentworth and Ramona Millen) E340-001-001-01

Highlights from kindergartens and schools can be found in our term Greenchat - [GREENchat - Marlborough District Council](#) sent out to schools at the end of each term.

The Enviroschools Marlborough website shares local school and kindergarten stories - [Blog and Stories - Enviroschools Marlborough](#)

We also like to have a Sustainable Actions ideas flyer we send to schools at the beginning of each term sharing dates, events and actions teachers and students can take part in - [News & Funding - Enviroschools Marlborough](#) .

Our focus this year has been on the Enviroschools Value of Place. It ties in with so many of our special places in Marlborough and the local curriculum focus schools are working on.

The first workshop was held at Shep's Park to share the idea of place and connection. 18 teachers took part in the two-hour workshop and a number had never been there before. Springlands Kindergarten have been using Shep's Park each fortnight for their Nature Connection sessions and they shared the outline of what they do in each session for others to see.

The second workshop with 16 teachers was held at Koru Nature Reserve. This one was focussed on the early childhood sector, sharing the place and space, looking at weta, ghecko's and kakariki they house at Koru Nature Reserve and environmental education programmes our team can support

The third workshop was held at Monkey Bay with 22 teachers, the second in a Rongoa series with Ripeka and Trisha Hook and Lovey Walsh who shared their knowledge around plant identification and ways to use native plants.

An Enviroschools introduction workshop was held for teachers at Fairhall School. This was for teachers new to Enviroschools and shared some of the key elements of Enviroschools. Place was used as a way to start this workshop with a map of Fairhall School. Teachers were asked to explore ways the school had taken action so it was exciting to see so many examples of this in the school environment from recycling and composting systems to edible gardens and the amazing native garden complete with bird feeders.

Our team have been working with six kindergartens and eight schools this term to support deepening Enviroschools practices and idea for taking action. Some examples are Redwoodtown kindergarten looking at Fish on Drains in their area, Witherlea Kindergarten doing vision mapping and meeting with Awatere Early Learning Centre to welcome them to Enviroschools and admire their newly developed fernery. Bohally Intermediate Envirogroup students are looking at composting systems and a Wednesday challenge, Tua Marina students are preparing for stream studies, Springlands School students have been identifying plants in the native garden and Riverlands students have been on an insect hunt.

Plans are underway next term for teacher workshops which include a guided tour along the Taylor River, looking at what's in nature's place as well as a coffee and cake event for new teachers and principals in Enviroschools.

The Kids Edible Garden facilitators meeting was held in the edible gardens at Bohally Intermediate to view the kumara mara kai the students established in term 4, 2023. Reuben Molnar, Health Promotion Adviser with Te Whatu Ora, talked about the work he had done with students from MBC at the Community Gardens growing kumara. He shared general growing practices for kumara.

Five schools have new garden facilitators so meetings with them and sharing of programmes and resources has been the main work done in this space.

Envirohub and our team are working on a programme to share with schools around the Sustainable Coastlines Litter Intelligence surveys. This opportunity will be rolled out in term 2.

Our team have all been involved in professional development Zoom meetings with Enviroschools looking at holistic reflection, deepening facilitators practices and we have also met with the senior teacher at Marlborough Kindergarten Association to look at ways to strengthen programmes. This included a session at the head teachers meeting and options for supporting actions.

Following on from our Community of practice Nature Connection pilot, we have been looking at ways to share our developing Nature Connection programme with the New Zealand Association of Environmental Education through a webinar series they run for teachers.

Parks and Open Spaces Activity Report

(Information prepared by Jane Tito, Robert Hutchinson, Kiri Whiteman, Grahame Smail, Linda Craighead, Robyn Blackburn, Brad Molony, Regan Russell, Carolyn Jones, Rachel Hutchinson, Murray Morgan, Ross Laybourn, Mike Lawson) R510-009-000-01, R510-006-02, R510-005-04-02, R800-005-03

Blenheim Parks

Pollard Park

Normal maintenance has been a priority over the last month but this has been challenging with the dry weather. The plants have had a hard time and we are now starting to see some of the trees turning into their autumn colours more quickly because of the stress they are under. Some of the trees are also randomly starting to die. The worry is that it is normally the year or two after a drought that the true numbers of trees that are stressed begin to die.

The compost heap in Pollard Park has just started to be screened ready for the planting season. Once this heap is clear of the yard, the next heap will be prepared with existing materials collected from parks around the district. The freshly screened compost will be dug into gardens at Seymour Square and Pollard Park feeding the plants and worms.

Digging of the annual beds happens between seasons of planting with the next planting season about a month away.

All off the crusher dust paths next to Fultons Creek have just been topped up with new gravel and levelled off. The adjacent photo shows the path next to the Creek by the native rockery with its new layer of gravel.



Marlborough Lines Festival of Light

Marlborough Lines are holding an event at Pollard Park to celebrate a 100 year milestone. The event entitled 'Marlborough Energised' is a lighting and visual show and will be held over three nights from 12-14 April. The event consists of a series of illuminated areas starting at Churchill Glade and weaving its way through the gardens over Fultons Creek, alongside the playground and back over the Creek to finish at Churchill Glade. An entertainment area and food court will be located at the start/finish area.



Seymour Square

Staff have just removed the plants from the four gardens next to the clock tower at Seymour Square to allow the RSA to use the garden space to place their remembrance crosses. This has been done for the last few years by the RSA in the lead up to ANZAC Day commemorations. The rest of the flower gardens at Seymour Square will be emptied after ANZAC Day and all flower gardens will then be replanted for springtime flowering.





Horton Park

As advised in the last Information Package, Ward Clay has been supplied for the new cricket block at Horton Park. Since then the clay has been screened for use in the block and fences are now in place ahead of work commencing 3 April.

Marlborough Cricket hosted a very successful International Over 50s, T20 cricket tournament in March.

Lansdowne Park

The first game of the rugby season was played under lights during the week prior to Easter. The heavily renovated field came through the Division 1 grade fixture well.



The Harlequins club room building located in the southern part of the Lansdowne Park car park is being demolished at present. Negotiations are underway with the club about future use of this area.



The winter sports season for all sports started the weekend after Easter.

Lansdowne Hub

Marlborough Chamber of Commerce

Marlborough Chamber of Commerce hosted a luncheon at the Hub with Principal Economist Brad Olsen and Senior Economist Nick Brunson from Infometrics Ltd on Tuesday 19 March.

It was a great turnout from the Marlborough business community. The economists discussed in depth interest rates predictions, inflationary pressures, latest global and geopolitical challenges and the effect on export markets as well as some compelling statistical trends on migration levels and the subsequent infrastructure challenges. The Marlborough region's local economy trends and future focus got a deep dive as well.



Winter sports courses

With the winter sports season quickly approaching the Hub is being used for a multitude of different sports courses. Prior to the Hub's opening, holding these sort of courses proved difficult for sporting bodies due to limited availability of community spaces. It is great to see the Hub being increasingly utilised for the development of sport in Marlborough.



Kōhine Māia festival

Kōhine Māia is a Sport Tasman initiative supported by Sport New Zealand's Young Women's Activation Fund that aims to help young women become confident, capable, bold and brave. The programme is about empowering our young Wāhine - aged between 12 and 18 years - to be socially connected, enjoy new experiences and work as a team whilst learning to gain confidence, support and leadership.

Recently a Kōhine Māia festival was held at Lansdowne Park by Sport Tasman. A number of Marlborough sporting organisations provided activities for the girls throughout the day.



Wairau Diversion

After a little bit of rain, cooler days and heavy dews and with a mow and clean-up, the Wairau Diversion was reopened to the public and campers on 27 March. The numbers using the site for responsible camping is fairly low at around 8 to 9 per day. We don't expect a huge increase in numbers given we are heading into cooler months but it is good to have the site open again.

The road along the top of the stopbank to the coast is still blocked to vehicles at the Hinepango Wetland until flood damage on the riverbanks is repaired.



Wither Hills Farm Park

Due to the cooler temperatures, dewy mornings and in considering advice sought from FENZ, the decision was made to open the Wither Hills Farm Park to the public during the week commencing 18 March. The public were asked to be careful in the Farm Park staying low on hot windy days, given that the area is still very dry.

Track counter numbers show most people obeyed the closure although small numbers were recorded on various tracks during this time. Larger numbers (50+) were recorded on the day on which the public were allowed back into the Park. Permanent closure signage is to be installed so that, in the event access has to be restricted in the future, it will be easier and quicker for staff and contractors to action.

Former Pony Club Building

Back in October 2023 Council approved the demolition/disposal of the former "Pony Club" building on the Taylor River Reserve subject to staff not being able to find a party/organisation willing to relocate the structure.

Staff placed a local advertisement and sought input through social media for the possible relocation of the building by interested parties with Council providing some financial assistance.

Council received 12 applications of interest from different groups that quickly reduced to 2 organisations.

Unfortunately neither of these organisations were able to secure land for the building to be relocated to.

Staff will progress the demolition of the building, seek consenting requirements and engage contractors.

Renwick Parks

Plantings and other similar amenity improvements are maturing well and the parks, playgrounds and open space areas across the Renwick Village are looking good.

Awatere and Flaxbourne Parks

Staff attended the recent Flaxbourne Settlers Association (FSA) meeting at which the FSA discussed thoughts around the development of a playground between the new heritage centre and the Ward Town Hall. This was in lieu of undertaking a larger renewal project at the existing Ward Domain playground site. There was support by those attending the meeting for a new playground at the heritage site. Staff are now working with FSA representatives to get a new playground underway.

At Ward Domain the community are finalising options to resurface the old tennis courts with a synthetic multi-use surface and generally revamp this recreational space to make it more attractive to use and enjoy. This will include the new multi-use surface, fencing and shelter planting. The eastern end of the old courts (about a third of the overall space) that will no longer be required for ball sports is to be repurposed and used as an equestrian learn-to-ride and skills development area.

Picton Parks

Picton Foreshore Reserve

Minor repairs (replacement of a few small rocks and concreting) were carried out to the rock sea wall at the western end of the foreshore to prevent slumping or major deterioration.

Also, some rocks that had dislodged over time from wave action by the beach end of the Town Wharf rock groyne were placed back on the groyne. This part of the beach is popular with small children playing at the water's edge and kayaks are often launched from here.

Town Basin and Picton Foreshore Reserve

Decorative lighting renewal and repair work were carried out recently across the Town Basin and Foreshore Reserve. Effective and appropriate lighting for these key public open space areas is an important element for the safe use and enjoyment of these areas.

Auckland Street Reserve – Picton Skate Park/Youth Space

The recently revamped skate park and youth space continues to be popular and well used by children, youth and families.

Shelly Beach Reserve

Shelly Beach was once again the staging place for the 2024 Optimist National Championships, hosted by the Queen Charlotte Yacht Club. With the Americas Cup on display (along with security guard) the event was a great success and added to the busyness of Picton over Easter.

Tirohanga Bridge installation

A new 24 metre pedestrian bridge across Waitohi Stream in Essons Valley to access the Tirohanga Track was first discussed around 2018. The reason for considering a bridge was to replace the stepping stones that often became dangerous and unpassable in winter or after heavy rain. The bridge was funded for the 2023/24 year and Edifice Contracts based in Levin, were awarded the contract and the bridge was fabricated offsite. The bridge was transported to Picton on the ferry and craned into place just prior to Easter. Approach works, landscaping and final safety assessments are required before the public can use the bridge.



Port Marlborough Pavilion

Te Ipukarea

Te Ipukarea is the Top of the South inter-iwi sports competition held in Te Taihū. This year Te Ātiawa o te Waka a Māui hosted the tournament in Waikawa on 1-2 March. Endeavour Park and Port Marlborough Pavilion were host to a number of different sporting events including Kēmu Hiko / E-games, Netipōro / Netball, Pā Whutupaoro/ Touch and Kī O Rahi. This was a great event with over 500 players, coaches and management along with supporters and spectators present.



District Cemeteries

There has been a spike in ashes interments over the past two months, keeping the Cemetery Admin staff and Sexton very busy. Some of these extra interments are due to Funeral Directors clearing the ashes that have remained in their care over time. There has been a concerted effort by them to contact the next-of-kin for each person and decide on a suitable resting place and interment date for their loved one's urn.

As an example of the numbers involved, in November and December 2023 there were 18 ashes interments, whilst in January and February 2024 there were 41 ashes interments. There were also 15 burials during the first two months of 2024, versus 8 for the last two months of 2023, adding to the sharp increase in work so far this year.

Numbering of blocks – Picton and Omaka No. 3 Lawn cemeteries

Standing at the bottom of the hill where the original Picton Cemetery lies, it is difficult to know where to even start to find a particular block. This is even more tricky considering that the blocks are largely unnumbered. We have plans to eventually install maps at each cemetery but, in the meantime, we are working on ordering and installing numbers so that the blocks are numbered at each end, making it easier for visitors who are searching for a particular plot.



We are currently concentrating on Picton Cemetery and the Omaka No. 3 Lawn, which also encompasses the Omaka Services Cemetery. The first half of the No. 3 Lawn is completely unnumbered, while the second half already has numbers at one end of each block, so a second number will be added at the other end as an improvement.

Old Omaka cemetery

Work at the Old Omaka Cemetery (west side of Maxwell Road) is now complete with sealed entranceway and parking, shelters, seating and flagpole having been installed.



District Memorials

The annual spring-clean/tidy up work is underway around the district at the war memorial sites to ensure these are ready for and looking good for ANZAC commemorations.

Torea Saddle Soldiers Memorial

After nearly a hundred years, new granite engraved plaques were recently installed at the memorial. This was largely undertaken as the original inlaid lead lettering had deteriorated such that it was very hard to read the names and inscriptions on the plaques. Additionally, after consultation with relevant stakeholders, and thanks to some volunteer labour, the memorial had a flagpole installed for the first time. A flag can be flown at this popular view and rest stop for people using the Torea - Portage access road or Queen Charlotte Track and at the annual ANZAC Day commemorations, which is always well attended.



Public Conveniences

The table shows for February and March the average daily use of a number of toilet facilities where there are counters in place. The numbers have dropped slightly from February to March. This is expected, particularly for locations like Seymour Square where during the cruise ship season a lot of passengers would visit the Square. However, there is still high use of facilities on state highways such as in Havelock and Rai Valley.

Site Location	Average daily use 1-16 February 2024	Average daily use 1-31 March 2024
Anakiwa	122	98
Seymour Square	402	262
Collins Memorial Reserve	84	79
Havelock Township	502	485
Okiwi Bay	149	132
Rai Valley Township	408	388

Walking and cycling

Sustainable Trails Conference

Saff recently attended the Sustainable Trails Conference in Cromwell. The three-day conference brought together a broad discipline of trail interests — trail users, designers, planners, land managers, volunteers, clubs and construction experts to share, connect and learn what is driving the trails industry today. Of note was the opportunity to connect with other councils building and maintaining trails and significantly the issues around funding. Many advised that it was easy to build trails but it was much harder to secure funding for ongoing maintenance.

Trees

This summer's dry season has impacted on the district's street and park tree stock. We have had two contractor crews out watering our park and street trees and street plots this season, a first for many years. Trees and shrubs that are up to 3 years old are regularly watered. However, from the fourth year onwards the plantings are generally well set to grow without water. Unfortunately, with this year's dry, we are seeing loss of shrubs and die back in trees that are 4-5 and sometimes 6 years old.

Playgrounds

Wairau Valley play equipment has finally arrived from overseas and installation begins on 5 May.

Havelock's new playground was completed just before the Mussel Festival and community feedback has been overwhelmingly supportive. The project involved the local children's wish lists and they selected their favourite design of the two proposals shortlisted. Playco were engaged to design and build the playground and did an amazing job incorporating as many of the list items as possible and, keeping with the local environment, utilising a marine theme and colours.

The Council has entered the playground in the Recreation Aotearoa under 500k playground awards.



New playground - Havelock



Old playground - Havelock

Park Bookings

The Parks and Open Spaces Team operates an online booking system for use of its parks. There are two calendars, one for sports parks and one for other parks. This helps staff to keep track of sports and events that are occurring at any one time whether it is use of Pollard Park for wedding photos or a major event such as the Relay for Life. Being an online calendar means that users are able to view whether a particular park is available for use. The data collected from these bookings is also useful for future planning for contractors looking after our parks and reserves.

Below are examples of the calendar pages for parks and sports parks for February 2024. On some days there can be multiple parks booked and an example of this can be seen on the right side tab on the sports park booking page.

Time	Park	User	Bookings
7:00 am - 12:00 pm	Athletic Park, All-Use 227242	20	0 bookings
7:00 am - 12:00 pm	Athletic Park, All-Use 227312	5	0 bookings
7:00 am - 12:00 pm	Athletic Park, All-Use 227312	12	0 bookings
7:00 am - 12:00 pm	Athletic Park, All-Use 227332	19	2 bookings
7:00 am - 12:00 pm	Athletic Park, All-Use 227332	26	0 bookings
8:00 - 9:00 pm	Endeavour Park, Lower Terrace - User 290628	30	1 bookings
8:00 - 9:00 pm	Endeavour Park, Lower Terrace	27	0 bookings
8:00 - 9:00 pm	Lanadonna Park, Winter Sports East - User 304681	31	0 bookings
8:00 - 9:00 pm	Lanadonna Park, Winter Sports East - User 304681	28	2 bookings
8:00 - 9:00 pm	Lanadonna Park, Winter Sports East - User 304681	29	2 bookings
8:00 - 9:00 pm	Lanadonna Park, Winter Sports East - User 304681	30	2 bookings
8:00 - 9:00 pm	Lanadonna Park, Winter Sports East - User 304681	31	2 bookings
8:00 - 9:00 pm	Athletic Park, Cycling Track - User 102221	2	0 bookings
8:00 - 9:00 pm	Athletic Park, Cycling Track - User 102221	9	1 bookings
8:00 - 9:00 pm	Athletic Park, Cycling Track - User 102221	23	0 bookings
8:00 - 9:00 pm	Athletic Park, Cycling Track - User 102221	24	0 bookings
8:00 - 9:00 pm	Athletic Park, Cycling Track - User 102221	25	0 bookings
8:00 - 9:00 pm	Athletic Park, Cycling Track - User 102221	26	0 bookings
8:00 - 9:00 pm	Athletic Park, Cycling Track - User 102221	27	0 bookings
8:00 - 9:00 pm	Athletic Park, Cycling Track - User 102221	28	0 bookings
8:00 - 9:00 pm	Athletic Park, Cycling Track - User 102221	29	0 bookings
8:00 - 9:00 pm	Athletic Park, Cycling Track - User 102221	30	0 bookings
8:00 - 9:00 pm	Athletic Park, Cycling Track - User 102221	31	0 bookings
8:00 - 9:00 pm	Lanadonna Park, Softball Diamond - User 290628	3	0 bookings
8:00 - 9:00 pm	Lanadonna Park, Softball Diamond - User 290628	10	0 bookings
8:00 - 9:00 pm	Lanadonna Park, Softball Diamond - User 290628	17	0 bookings
8:00 - 9:00 pm	Lanadonna Park, Softball Diamond - User 290628	24	0 bookings
8:00 - 9:00 pm	Lanadonna Park, Softball Diamond - User 290628	31	0 bookings
8:00 - 9:00 pm	Lanadonna Park, Softball Diamond - User 290628	32	0 bookings
8:00 - 9:00 pm	Lanadonna Park, Softball Diamond - User 290628	33	0 bookings
8:00 - 9:00 pm	Lanadonna Park, Softball Diamond - User 290628	34	0 bookings
8:00 - 9:00 pm	Lanadonna Park, Softball Diamond - User 290628	35	0 bookings
8:00 - 9:00 pm	Lanadonna Park, Softball Diamond - User 290628	36	0 bookings
8:00 - 9:00 pm	Lanadonna Park, Softball Diamond - User 290628	37	0 bookings
8:00 - 9:00 pm	Lanadonna Park, Softball Diamond - User 290628	38	0 bookings
8:00 - 9:00 pm	Lanadonna Park, Softball Diamond - User 290628	39	0 bookings
8:00 - 9:00 pm	Lanadonna Park, Softball Diamond - User 290628	40	0 bookings
8:00 - 9:00 pm	Lanadonna Park, Softball Diamond - User 290628	41	0 bookings
8:00 - 9:00 pm	Lanadonna Park, Softball Diamond - User 290628	42	0 bookings
8:00 - 9:00 pm	Lanadonna Park, Softball Diamond - User 290628	43	0 bookings
8:00 - 9:00 pm	Lanadonna Park, Softball Diamond - User 290628	44	0 bookings
8:00 - 9:00 pm	Lanadonna Park, Softball Diamond - User 290628	45	0 bookings
8:00 - 9:00 pm	Lanadonna Park, Softball Diamond - User 290628	46	0 bookings
8:00 - 9:00 pm	Lanadonna Park, Softball Diamond - User 290628	47	0 bookings
8:00 - 9:00 pm	Lanadonna Park, Softball Diamond - User 290628	48	0 bookings
8:00 - 9:00 pm	Lanadonna Park, Softball Diamond - User 290628	49	0 bookings
8:00 - 9:00 pm	Lanadonna Park, Softball Diamond - User 290628	50	0 bookings
8:00 - 9:00 pm	Lanadonna Park, Softball Diamond - User 290628	51	0 bookings
8:00 - 9:00 pm	Lanadonna Park, Softball Diamond - User 290628	52	0 bookings
8:00 - 9:00 pm	Lanadonna Park, Softball Diamond - User 290628	53	0 bookings
8:00 - 9:00 pm	Lanadonna Park, Softball Diamond - User 290628	54	0 bookings
8:00 - 9:00 pm	Lanadonna Park, Softball Diamond - User 290628	55	0 bookings
8:00 - 9:00 pm	Lanadonna Park, Softball Diamond - User 290628	56	0 bookings
8:00 - 9:00 pm	Lanadonna Park, Softball Diamond - User 290628	57	0 bookings
8:00 - 9:00 pm	Lanadonna Park, Softball Diamond - User 290628	58	0 bookings
8:00 - 9:00 pm	Lanadonna Park, Softball Diamond - User 290628	59	0 bookings
8:00 - 9:00 pm	Lanadonna Park, Softball Diamond - User 290628	60	0 bookings
8:00 - 9:00 pm	Lanadonna Park, Softball Diamond - User 290628	61	0 bookings
8:00 - 9:00 pm	Lanadonna Park, Softball Diamond - User 290628	62	0 bookings
8:00 - 9:00 pm	Lanadonna Park, Softball Diamond - User 290628	63	0 bookings
8:00 - 9:00 pm	Lanadonna Park, Softball Diamond - User 290628	64	0 bookings
8:00 - 9:00 pm	Lanadonna Park, Softball Diamond - User 290628	65	0 bookings
8:00 - 9:00 pm	Lanadonna Park, Softball Diamond - User 290628	66	0 bookings
8:00 - 9:00 pm	Lanadonna Park, Softball Diamond - User 290628	67	0 bookings
8:00 - 9:00 pm	Lanadonna Park, Softball Diamond - User 290628	68	0 bookings
8:00 - 9:00 pm	Lanadonna Park, Softball Diamond - User 290628	69	0 bookings
8:00 - 9:00 pm	Lanadonna Park, Softball Diamond - User 290628	70	0 bookings
8:00 - 9:00 pm	Lanadonna Park, Softball Diamond - User 290628	71	0 bookings
8:00 - 9:00 pm	Lanadonna Park, Softball Diamond - User 290628	72	0 bookings
8:00 - 9:00 pm	Lanadonna Park, Softball Diamond - User 290628	73	0 bookings
8:00 - 9:00 pm	Lanadonna Park, Softball Diamond - User 290628	74	0 bookings
8:00 - 9:00 pm	Lanadonna Park, Softball Diamond - User 290628	75	0 bookings
8:00 - 9:00 pm	Lanadonna Park, Softball Diamond - User 290628	76	0 bookings
8:00 - 9:00 pm	Lanadonna Park, Softball Diamond - User 290628	77	0 bookings
8:00 - 9:00 pm	Lanadonna Park, Softball Diamond - User 290628	78	0 bookings
8:00 - 9:00 pm	Lanadonna Park, Softball Diamond - User 290628	79	0 bookings
8:00 - 9:00 pm	Lanadonna Park, Softball Diamond - User 290628	80	0 bookings
8:00 - 9:00 pm	Lanadonna Park, Softball Diamond - User 290628	81	0 bookings
8:00 - 9:00 pm	Lanadonna Park, Softball Diamond - User 290628	82	0 bookings
8:00 - 9:00 pm	Lanadonna Park, Softball Diamond - User 290628	83	0 bookings
8:00 - 9:00 pm	Lanadonna Park, Softball Diamond - User 290628	84	0 bookings
8:00 - 9:00 pm	Lanadonna Park, Softball Diamond - User 290628	85	0 bookings
8:00 - 9:00 pm	Lanadonna Park, Softball Diamond - User 290628	86	0 bookings
8:00 - 9:00 pm	Lanadonna Park, Softball Diamond - User 290628	87	0 bookings
8:00 - 9:00 pm	Lanadonna Park, Softball Diamond - User 290628	88	0 bookings
8:00 - 9:00 pm	Lanadonna Park, Softball Diamond - User 290628	89	0 bookings
8:00 - 9:00 pm	Lanadonna Park, Softball Diamond - User 290628	90	0 bookings
8:00 - 9:00 pm	Lanadonna Park, Softball Diamond - User 290628	91	0 bookings
8:00 - 9:00 pm	Lanadonna Park, Softball Diamond - User 290628	92	0 bookings
8:00 - 9:00 pm	Lanadonna Park, Softball Diamond - User 290628	93	0 bookings
8:00 - 9:00 pm	Lanadonna Park, Softball Diamond - User 290628	94	0 bookings
8:00 - 9:00 pm	Lanadonna Park, Softball Diamond - User 290628	95	0 bookings
8:00 - 9:00 pm	Lanadonna Park, Softball Diamond - User 290628	96	0 bookings
8:00 - 9:00 pm	Lanadonna Park, Softball Diamond - User 290628	97	0 bookings
8:00 - 9:00 pm	Lanadonna Park, Softball Diamond - User 290628	98	0 bookings
8:00 - 9:00 pm	Lanadonna Park, Softball Diamond - User 290628	99	0 bookings
8:00 - 9:00 pm	Lanadonna Park, Softball Diamond - User 290628	100	0 bookings

Sport park bookings – February 2024

Memorial Park, Reserve Memorial Park, Reserve 10 Jan 6:00 am - 30 Ja...	29	Memorial Park, Reserve Memorial Park, Reserve 10 Jan 6:00 am - 30 Ja...	30	Memorial Park, Reserve Memorial Park, Reserve 30 Jan 6:00 am - 5 Feb...	31	Memorial Park, Reserve Memorial Park, Reserve 30 Jan 6:00 am - 5 Feb...	1	Memorial Park, Reserve Memorial Park, Reserve 30 Jan 6:00 am - 5 Feb...	2	Memorial Park, Reserve Memorial Park, Reserve 30 Jan 6:00 am - 5 Feb...	3	Memorial Park, Reserve Memorial Park, Reserve 30 Jan 6:00 am - 5 Feb...	4
		3 bookings		2 bookings					2 bookings				
Memorial Park, Reserve Memorial Park, Reserve 30 Jan 6:00 am - 5 Feb...	5		6		7		8		9	Riverside Park, Reserve Riverside Park, Reserve 7:00 - 9:00 am	10	Pollard Park, Reserve - User... Pollard Park, Reserve 2:00 - 3:00 pm	11
Whitehead Park, East Turf Whitehead Park, East Turf 12 Feb 9:00 am - 13 F...	12	Whitehead Park, East Turf Whitehead Park, East Turf 12 Feb 9:00 am - 13 F...	13		14		15		16	Riverside Park, Reserve Riverside Park, Reserve 7:00 - 9:00 am 4 bookings	17		18
	19	Memorial Park, Reserve - User... Memorial Park, Reserve 20 Feb 12:00 am - 27...	20	Memorial Park, Reserve - User... Memorial Park, Reserve 20 Feb 12:00 am - 27...	21	Memorial Park, Reserve - User... Memorial Park, Reserve 20 Feb 12:00 am - 27...	22	Memorial Park, Reserve - User... Memorial Park, Reserve 20 Feb 12:00 am - 27...	23	Memorial Park, Reserve - User... Memorial Park, Reserve 20 Feb 12:00 am - 27...	24	Memorial Park, Reserve - User... Memorial Park, Reserve 20 Feb 12:00 am - 27...	25
		2 bookings		2 bookings		2 bookings		2 bookings		4 bookings		2 bookings	
Memorial Park, Reserve - User... Memorial Park, Reserve 20 Feb 12:00 am - 27...	26		27		28	Pollard Park, Reserve - User... Pollard Park, Reserve 6:00 - 8:00 pm	29		1	Riverside Park, Reserve Riverside Park, Reserve 7:00 - 9:00 am 2 bookings	2		3
2 bookings													

Parks and Open Spaces bookings - February 2024

Policy and planning

Wither Hills Farm Park Management Plan

The draft plan and background report have been workshopped by staff recently with editing occurring to ensure the documents appropriately reflect the Council's soil conservation role in managing the Wither Hills. A Councillor workshop is being held on 11 April and subject to any changes Councillors wish to make, a report to Council will then follow where approval will be sought to publicly notify the draft plan for submissions.

Grovetown Lagoon Management Plan

There have been delays in finding a time for a workshop with the Grovetown Executive to consider a draft of the management plan prepared for Grovetown Lagoon. A workshop is to be held in early May following which a workshop with Councillors will be arranged. Following the same process as for other management plans once the Councillor workshop is completed, a report to Council will be prepared seeking approval to notify the draft plan for public submission.

Waikawa Bay Foreshore Reserve Management Plan

Staff and Executive Management have been considering the draft reserve management plan that has been prepared, particularly in relation to operation of the launching ramp and how this should be managed under the reserve management plan. Consenting matters and Reserves Act requirements have been considered along with related legal aspects.

Once these matters are fully considered, a report to Council will be prepared seeking approval to notify the draft management plan for public submission.

Seddon Domain Reserve Management Plan

A draft reserve management plan for Seddon Domain has been in preparation for some time. There have been a couple of consultations with the Seddon community as well as a couple of meetings. In reviewing

progress on the draft plan recently, thought has been given to the need to prepare a plan just for Seddon Domain which is one of a number of rural domains the Council has management and control over.

What is now proposed is an overall sports park management plan that would include all sports parks across Marlborough as well as the rural domains. The work that has been undertaken for Seddon Domain can be wound into this process. A more complete report will be prepared on this proposal for the next Assets and Services Committee meeting.

Marlborough Environment Plan

Staff have been working on preparing information for the Environmental Policy Team to undertake two variations to the Marlborough Environment Plan (MEP). Approval to undertake the variations was given by the Environment & Planning Committee in March 2023 and concern whether the policy cascade (objective through to rules) for the maintenance of notable trees is achieving the purpose for which they have been drafted and a review of zonings on parks and reserves.

The notable tree provisions in the MEP are applicable to both private and public land. Several issues that have arisen since notification of the MEP include:

- Declining state of notable trees and whether they should continue to be identified as notable trees;
- What is allowed by the permitted activity standards for trimming and pruning; and
- Implications of the Tree Protection Zone Rules.

A number of zoning changes (21) to land that is either reserve land or managed as if it were reserve land are also being proposed. There are two types of changes proposed being:

- New reserves that have been created since the development of the MEP, either through subdivision or through land purchase; and
- Land where zonings are inconsistent with activity occurring on the land or inconsistent with the policy direction in the MEP.

The zoning changes are necessary as in some cases a resource consent may be required when with a different zoning a consent would not be required. An example of this is Awarua Park at Spring Creek where the park currently has a zoning of Open Space 1. This zone is normally for small neighbourhood parks with minimal development whereas Open Space 2 is for sports parks where related activity in terms of building and grandstands is provided for.

Once the information has been completed this will be forwarded to the Environmental Policy Team to consider before they process the changes under the Resource Management Act provisions.

Resource consent feedback

In amongst other duties over the past six weeks, staff have been spending a lot of time providing information and advice to the resource consent processing team on several resource consent applications. Two large subdivisions (one an industrial subdivision in Blenheim and the other a residential subdivision in Picton) provide opportunities for enhanced access to public land and consideration is being given to this. Feedback is also being provided on planting plans for these subdivisions.

Rangers' Report

Homelessness

Councillors may recall that changes were made to the Freedom Camping Act 2011 last year in relation to self-containment requirements for vehicles. Additionally, two changes to the Act related to homelessness in the context of freedom camping were made as follows:

- A new definition identified that a person is not freedom camping if they are not in New Zealand on a visitor visa and are unable to live in appropriate residential accommodation. If a person satisfies both criteria, then they cannot be liable for any offences for freedom camping.
- A review on the impact of the reforms on those experiencing homelessness is to start two years after commencement of the Act. The intent of this review is to ensure that there are no negative consequences for those experiencing homelessness arising from the legislation.

The Rangers staff have been collecting information on those assessed as being homeless since July last year. This is not a true indication of all those that are homeless but is what has been observed by the Rangers during their daily patrols. The date, location and whether people are living in a vehicle or tent are recorded. Where possible Rangers do provide information to those sleeping in vehicles or tents of the various agencies that may be able to help.

The number of instances of homelessness observed by the Rangers since July last year is 42. Most of the observations were of people sleeping in vehicles with only three tents being recorded. Seventeen instances were recorded along various parts of the Wairau River while 14 were recorded at the Taylor Dam Reserve, outside of the authorised freedom camping area. Other locations recorded were at parks and roads within and near Blenheim and in Seddon. The other point of note is that there were several people who were recorded multiple times by the Rangers.

Illegal dumping

Park Rangers have again reported a reasonably quiet few months on their patrols of parks and river reserves. While illegal activity is still occurring the numbers of instances recorded for illegal dumping and littering over the past three months appear to be fairly consistent with previous months. The Rangers have also reported only a few instances of graffiti or intentional damage occurring over the past three months.

Illegal Dumping and Littering	Aug 2023	Sept 2023	Oct 2023	Nov 2023	Dec 2023	Jan 2024	Feb 2024	Mar 2024
Garden Waste	2	1	3	1	2	3	1	-
Abandoned Vehicle	-	1	-	-	1	1	1	-
General Illegal Dumping	10	11	8	6	8	8	9	6
Offal	7	1	2	6	3	1	2	1
Littering	8	2	5	4	5	4	6	3

The Rangers have been using a hoist on the back deck of the truck to assist in removing some of the larger dumpings.



Public Interaction

During their patrols the Rangers often have interactions with the public who are using parks and open space areas. For the most part people are using these areas in a compliant way but sometimes there is a need to ask people to stop doing what they are doing because of rules that may be in place (e.g. bylaws) or there may be some risk to the public. Generally, when things are explained to people, they will cease doing what they are doing and their response is good. However, there is always those who do not respond well and provide a more aggressive response to the Rangers.

An example of this occurred during the closure of the Wither Hills Farm Park due to significant fire risk. Barriers and signage to the main entrances to the Farm Park had been erected by contractors. In monitoring these areas Rangers came across a number of instances where people had entered the Farm Park despite signage making it very clear that it was closed and that there had been widespread media information about the reason for the closure. Most who were spoken to accepted they should not have entered, however not all were cooperative and argued rather forcefully about the need for the closure.

Rangers have also responded to calls concerning the use of motorbikes on the Taylor River Reserve over the last couple of months. The motorbikes are generally being ridden at speed and are a danger to other users of the river reserve.

Wood cutting/tree removal

Rangers continue to report live trees being cut down and fallen trees being cut up for firewood from public areas along the Wairau River. In the January 2024 Information Package the following was reported by the Rangers:

- for the period 1 May to 31 July 2023, 19 instances of illegal tree felling/wood cutting occurred
- for a period of 6 weeks from 1 August to 19 September, a further 25 instances of illegal tree felling/wood cutting had occurred
- from 20 September to the year end 18 occasions of tree felling/wood cutting were reported

Since the beginning of this year the Rangers have reported 17 occasions where there is clear evidence of tree felling/wood cutting, all of which are at varying locations along the Wairau River. It is expected that with the cooler months on the way there will be an increase in this activity.

Road Safety Coordinator Update

(Information prepared by Robyn Blackburn)

R800-005-03

Motorcycle Safety

The Marlborough Motorcycle Road Safety Group consisting of local riders and partner agencies such as the Police, ACC and Marlborough Roads are trialling a new meeting idea. The Group are meeting at Dodson's with a presentation from the new owners of Marlborough Motorcycles and local riders have been invited to drop in for some pizza and a natter.

The idea for this change of meeting format stemmed from the Group's riders who knew that riders like to have 'casual catchups', and the best way for our Safety Group to get feedback from riders was to meet them on their 'turf' without meeting formalities.

One of the main actions from the Group's Action Plan is to encourage our riders to participate in rider training and ACC have invested heavily by providing subsidised local courses (Ride Forever) for riders to participate in. Councils across the Top of the South cover the remainder of the cost meaning the training is free to riders. However, the uptake in Marlborough is well under ACC's targets despite their Top of the South neighbours being well on target and sometimes above. Hopefully the different approach outlined above may help to increase rider uptake of training in Marlborough.



Aotearoa Love to Ride Month – Marlborough Treasure Hunt

A total of 726 people completed the Treasure Hunt in 2024 and while this is slightly less than last year, we are still delighted with the numbers who participated. One change we are considering for 2025 is to run the event over February and March instead of just February due to feedback from some families that February was very busy with other events. Five 'treasure' gift baskets were won by lucky participants.

Roads and Roadsides

In response to a Stuff article on the SH6 speed trial, an analysis of the data from the trial has been undertaken by Abley – a transportation consulting company. The following is Abley's analysis of the trial outcomes.



“Unveiling the Impact of Speed Reduction Trial on SH6

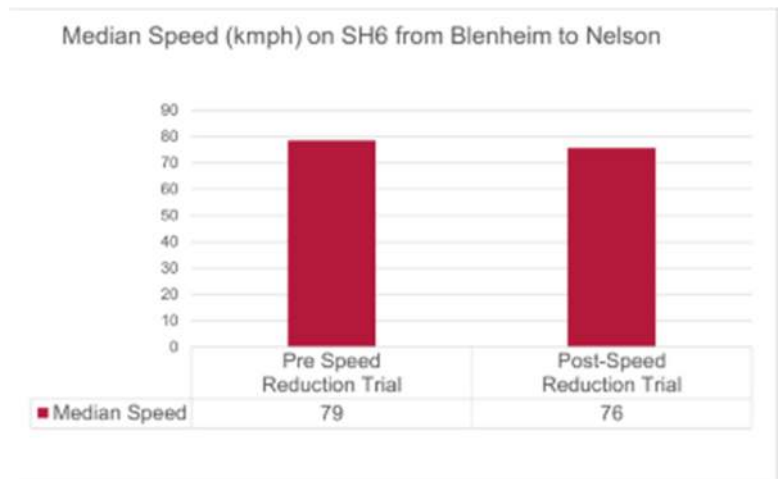
Dramatic Safety Improvements

Stuff’s recent report revealed a staggering 75% reduction in deaths and serious injuries during the trial period. In the ten years prior to the speed reduction trials, there were 19 deaths and 86 serious injuries, as opposed to one death and four serious injuries in the two years following the speed reduction trials. This equates to two people per year who safely return to their whanau and 6-7 people per year who avoid serious injury and trauma. This shows the profound impact of the speed reduction measures on reducing road trauma.

Analysing Travel Time Implications

The reduction in speed limits is often perceived to be at the expense of increased travel times and subsequent inefficiencies in the operation of the transport network. Abley have analysed the impact of the trial on travel times, [using TomTom’s historical travel time and speed analytics data](#). We compared data from the year before the speed limit reductions with data from the year after the speed limit reductions (allowing three months for driver behaviour to change).

The findings revealed that the change in median speed was a modest three km/h, meaning the average journey from Blenheim to Nelson increased by approximately three minutes after the reductions, a journey that normally takes one hour and 19 minutes. This 3.9% increase in travel time is very small in the context of a 75% reduction in deaths and serious injuries along the corridor.



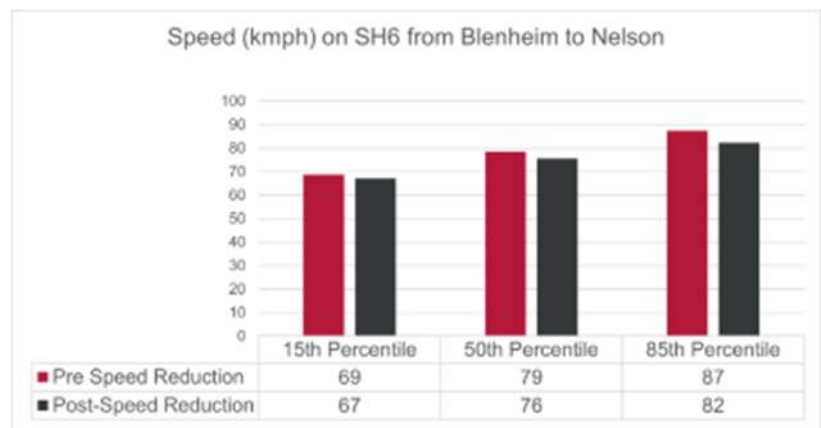
Safety benefits versus increased travel times

Note that this is not a full economic appraisal of the speed reduction, as the implementation costs and other cost/benefit categories are not included, but it is expected to capture the primary social and user benefits/disbenefits of the speed reduction.

NZ Transport Agency Waka Kotahi Monetised Benefits and Costs Manual (MBCM) includes procedures for practitioners to calculate the tangible benefits associated with changes in travel times and road safety outcomes as part of a wider suite of evaluation metrics. The additional travel time cost (or disbenefit) associated with the slower speeds along the SH6 corridor are estimated to be \$3.0 million annually. The benefit of reducing the number of deaths or serious injuries by 75% equates to 8 fewer road users being killed or seriously injured. The safety benefits are a whopping \$27.3 million annually.

To put it plainly, the safety benefits on this corridor outweigh the additional travel time in terms of economic and social cost by a ratio of 9:1.

We understand that traffic management and closures occurred during 4-5 months of this two-year period due to the impacts of the August 2022 storm event which affected the region. When this period is removed from the analysis the number of deaths and serious injuries increases from 2.0 to 3.2 per annum. This still strongly demonstrates the safety benefits outweigh the travel time disbenefits by a factor of approximately eight to one.



The speed reductions on the SH6 corridor were greater for faster vehicles along the corridor as evidenced by the 85th percentile travel times extracted from the TomTom data. The reduction from 87kph to 82kph corresponds to a 6.3% reduction in speed. Similarly, the slower vehicles in the fleet also reduced speed from 69kph to 67kph because of the trial.

Our analysis of the TomTom analytics data demonstrates that the implementation of speed reductions on SH6 is a resounding success story. The substantial reduction in road trauma is not offset by the slightly increased travel times along the corridor. The SH6 trial results provide tangible evidence of the benefits of implementing speed reductions across higher risk corridors on our transport network.”



Young Driver Safety

SADD held three meetings in Marlborough in March to encourage college students to start up SADD groups and deliver awareness campaigns locally. The numbers from MGC and MBC participating at the Blenheim meeting in the library were low. However, the SADD facilitator got large numbers at the QCC and Rai Valley meetings.

MDC attended the Blenheim meeting to meet the SADD coordinator and to reinforce Council's support for the programme. Ultimately any campaign will need to be led by the students and all the schools have been encouraged to contact Council if they need our support.

The RYDA (Rotary Young Driver Awareness) programme was held at Renwick Sports Pavilion late February and MBC, MGC, Rai Valley and Richmond View Year 12 students attended. The programme is delivered by Road Safety Education Limited (RSE) who are a not-for-profit organisation with a commitment to the reduction of road trauma through the delivery of evidence-based road safety education programmes.

MDC supports the programme each year by being available on the day and also providing funding for transport to the venue for MGC and MBC students, catering for each day and covering the cost of the venue hire.



Access & Mobility Forum

(Information prepared by Jane Tito)

C230-001-A01

Attached are the latest minutes.



Access and Mobility Meeting held at Marlborough Library/Te Kahu o Waipuna, Blenheim 12 March 2024, 200pm

Attendees: Cllr Matt Flight, Co-Chair
Cllr Debra Dalliesi, Co-Chair
Hana Wilkinson, Health New Zealand/Te Whatu Ora
David Clode
Ricky Shadbolt
Ray Craven
Taylah Rasmussen
Lisa Wheeler
Carla Taylor
Dianne Gibb
Fern McGraw, Marlborough Roads
Charlotte Campbell-Lamerton, Marlborough Roads
Evan Teale (for Jill Scobie, Marlborough Stroke Club)
Hularii McKenzie

MDC: Jane Tito, Manager Parks and Open Spaces
Diane Bell, Customer Service Officer
Gillian Dixon, Secretary

- 1) Cllr Flight welcomed everyone to the meeting and introductions took place.
- 2) Apologies: Bill East
Catherine Donnolly
Camilla Neilson
Nigel Perry
Jodie Griffiths
- 3) The minutes of the previous meeting – 5 December 2023 – were approved.
- 4) Matters arising from the last meeting:

1.	Questionnaire for pedestrian/mobility scooter access from the Taylor River shared pathway to the hospital. The link and information have been circulated to the group. Carla asked for it to be sent to her again.	Gillian (completed and closed)
2.	Recommendation for disability car parking in the current shuttle bus area at Marlborough Airport now complete. Cllr Dalliesi circulated a photograph of the new parking space (attached at appendix I). Well done to her and Dianne for achieving this outcome.	Closed
3.	Linda to discuss with the Rivers Team Lisa's query regarding riding on the top of the stop bank between Marshall Place and Snowden Crescent. Jane confirmed that Linda had spoken to the Rivers Team and changes to the stop bank can not be made without compromising the stop bank.	Closed

5) General Business

Marlborough Roads – Fern McGraw

- Trip hazards work completed on Wither Road, Hillside Terrace and Hillcrest Avenue.
- Grove Road, Dillon Street, Eltham Road and Hutcheson are next.
- Grinding work on Parker Street and Hospital Road to be carried out.
- Chip sealing work throughout the region is now coming to an end.

Building Control - No update as Bill an apology

Parks and Open Spaces – Jane Tito

- Jane circulated information from the Department of Conservation/Recreation Aotearoa – *“Invitation: Taking part in a survey about outdoor recreation for disabled people”*. The link will be circulated after the meeting.
Action: Gillian (complete)
- A new walking path in the Tirimona Recreation Reserve at Anakiwa is now complete.
- Upgrades to pathways in cemeteries have been undertaken.
- The Wither Hills Farm Park remains closed due to fire danger but this has led to increase numbers at Picton and Havelock Parks and Pollard Park.
- The car park at Lansdowne is now fully sealed.
- Plans are being put to the Long-Term Plan for the boardwalk along Riverside Park Reserve to be replaced with a heavy-duty plastic (as below). The current boardwalk is made of macrocarpa and the plastic tiles will be longer lasting.



- Havelock playgrounds now have more accessible features.
- The timings on some of the public toilet locks have now been increased to 20 mins.
- A report from Grey Power had been provided for the meeting by Robyn Blackburn– attached at Appendix II

6) Any Other Business

The Future of the Access and Mobility Form

Cir Flight asked, as a group what you would like to see at future meetings. Please consider and get back to gillian.dixon@marlborough.govt.nz with your thoughts and ideas. Recent attendance figures had been very low but today's meeting numbers were encouraging. The Library is a good venue and will be booked for the rest of the year. Jodie Griffiths is working on a database of agencies in the region and Gillian has already provided her with the Access and Mobility Group contact list.

- Carla informed the meeting of new arrangements for booking the hoist at the Aquatic Centre. Only one person at a time can use the hoist, including time spent in the pool, in case of an emergency.
Action: Clr Dalliessi, Dianne and Carla will draft a letter to Bridget at the Stadium to enquire about the hoist that was at the Stadium.
- Ray, a resident at Redwood Retirement Village, told the meeting that a friend with a mobility scooter had tipped over on Hospital Road. Would we be able to have a map showing the safe routes for pedestrians and scooter riders?
Charlotte thought this was a brilliant idea and Clr Flight said it would be good to get together with all the Retirement Villages in the area to find out what would be required. Ideas included accessible toilets, including those with adult change tables, to be included in the map showing the best routes into town from each Retirement Village. This could also be included in the Citizens Advice website.
Charlotte also reminded everyone to complete the [MDC Near Miss Report](#) for any accidents or near misses whilst out in Marlborough.
Action: Charlotte, Cirs Dalliessi and Flight
- Carla asked if there was an update on the adult changing room in the Library.
Action: Jane will check.
- Clr Dallessi advised that the Long-Term Plan will be open for consultation from 4 April to 6 May. Also, the roll out of wheelie bins has started but are not to be used until 1 July. Comms for retirement homes will be coming out shortly.

The meeting closed at 3.15pm

The date of the next meeting is Tuesday 11 June, 2.00pm at the Library.

Action Points from the Meeting

1	"Invitation: Taking part in a survey about outdoor recreation for disabled people" from DOC/Recreation Aotearoa – link to be circulated.	Gillian (complete)
2	The Future of the Access and Mobility Form – ideas and thoughts for future meetings to be sent to Gillian.	All
3	Letter to Bridget at the Stadium re possible use of their hoist for the Aquatic Centre.	Clr Dalliessi, Dianne and Carla
4	Safe routes for pedestrians and scooter users. Ideas for a map.	Charlotte, Cirs Dalliessi and Flight
5	Update on the adult changing room at the Library.	Jane

Appendix I



Appendix II

Report from Grey Power for Access and Mobility Meeting on 12 March 2024

Accessibility Parking

We are concerned to hear that recently an older couple with mobility issues preparing for an MDC Citizen Ceremony the following day, decided to scout out the area around Council for accessibility parks for people with Disability Parking Permits.

We appreciate the reasons why there are none at the front of the building and two are available at the rear of the building to cater for people with mobility issues who have a Disability Parking Permit.

However, as the rear building accessibility parks were enclosed in the construction zone, they were unavailable for people to use. We note at least one of those parks is available now, 20 February, so it was noted that the parks were unavailable for a brief period.

Grey Power would ask that in future when accessibility car parks are temporarily unavailable that temporary accessibility parks are made available for Disabled Parking Permit holders to use as close as possible to those temporarily closed. Many of our members rely on accessibility parking to be able to access the services available to them in the community and Grey Power will always advocate for that.

Can it be confirmed at this meeting that Council will make sure staff and their contractors are aware of this request and to the best of their ability will make temporary accessibility parking available when others are temporarily closed, please.

Courtesy Crossings

Grey Power is aware that Courtesy Crossings should provide a place where drivers can stop safely to allow pedestrians to cross. Drivers are not required to stop at courtesy crossings; however, the official New Zealand road code recommends that drivers are courteous to pedestrians using or waiting to use a courtesy crossing.

Courtesy crossings are intended to facilitate eye contact between pedestrians and drivers resulting in a mutually negotiated position over who goes first. However, this can create uncertainty between road users as to who has the right of way, which can be uncomfortable (or unacceptable) for some people including Grey Power members.

In other regions, there are signs or writing on the road (see image) to warn pedestrians that cars have the right of way and pedestrians need to wait until the car has passed or has stopped to let them cross.

Grey Power would like to ask Council if the Courtesy Crossings throughout Marlborough could all have similar signage.



Continuation of this Committee

Grey Power would strongly argue for the continuation of this forum even though the numbers of other organisations attending recent meetings has been disappointing leading to questions being asked within Council about the Forum's sustainability. Grey Power believes these meetings really do add value to our community by providing a forum where a wide range of access issues can be aired by the community and, when possible, actions can be taken to address those issues.

Grey Power appreciates that Council and staff give time and resourcing to manage and attend meetings and Council is justified in their concerns about future sustainability. We suggest various organisations in our community who can contribute to this forum are approached by Council about attending. And it would be timely if current members reaffirmed the Committees goals & objectives so we can be reminded of what we can bring to the meetings for discussion / action.

We feel strongly that it would be a big loss to drop this forum due to lack of membership as it is an element in the Marlborough Age Friendly Strategy, which has been ratified by Council in the Community Support & Health Services Domain as an ongoing initiative.

Property and Community Facilities Project Report

(Information prepared by Maighan Watson)

Marlborough Hockey Turf and Pavilion

The Marlborough hockey turf and pavilion projects are nearing completion. The construction of the turf and adjacent car park is essentially complete, with some minor drainage and footpath works being undertaken around the pavilion as scaffolding is dismantled. On the pavilion, the external stairs have been installed and glazing is underway.

Over the next few weeks external tasks such as the balustrade and deck installation, breezeway gates and blockwork sealing will be completed. Completion is currently on track for the end of April 2024, with all hands on deck to meet this date. A blessing and naming will take place in the week of 13-17 May 2024.



Fig. 1 – Hockey Pavilion



Fig. 2 – Hockey Pavilion



Fig. 3 – Hockey Pavilion, Ground floor breezeway



Fig. 4 – Hockey Pavilion, Communal space



Fig. 5 – Hockey Turf



Fig. 6 – Hockey Turf, New dugouts

Senior Housing development - 85 George Street, Blenheim

Stage 2 of Council's Senior Housing development is well underway. Contractor T & D Construction have now installed all glazing, completed the first fixes for electrical and plumbing, and the installation of the gutters, downpipes and soffits.

Stage 1, the internal fit-out is ongoing with the kitchen and wardrobe joinery underway. Floor linings, drapes, light fittings will follow closely behind. Planning is now underway for tenant occupation mid-2024.



Fig. 7 – Senior Housing development



Fig. 8 – Senior Housing development



Fig. 9 – Senior Housing development, Kitchen install



Fig. 10 – Senior Housing development, Wardrobe install

Record No: 2496143