

He kōrero nā te Kaunihera o Wairau. News from Marlborough District Council.



Let's get it sorted for future generations - an expanded kerbside collection is coming with wheelie bins rolling out from 1 July

Rubbish bags on borrowed time

Wheelie bins are coming which means from 1 July 2024 Council rubbish bags will no longer be collected from the kerbside in Marlborough.

Rubbish bags are on "borrowed time", Council's Solid Waste Manager Mark Lucas says. "Replacing rubbish bags with the new wheelie bin kerbside collection service will save more than 750,000 rubbish bags from going to landfill every year and the wheelie bins have a larger capacity than the existing bags," Mark said.

Council has a limited supply of rubbish bags left and will sell them until supplies are exhausted. Most supermarkets in the region have already stopped selling them.

"People can use up their supply of rubbish bags but from 1 July these will not be collected from the kerbside. Council will continue to accept them at transfer stations, the Waste

Sorting Centre, or the Resource Recovery Centre, but that option will be removed as demand diminishes," Mark said.

You can redeem your rubbish bag voucher at Council's Blenheim or Picton Service Centres or get a rebate until 30 June this year.

While stocks last, rubbish bags are available to buy from Council's Blenheim or Picton Service Centre either individually (\$1.85), in packs of 10 (\$18.50) or packs of 52 (\$96.00).

The new and expanded kerbside collection service covers Blenheim, Grovetown, Havelock, Picton, Rarangi, Rai Valley, Renwick, Seddon, Spring Creek and Tūa Marina with household waste collected one week and recycling the next.

Two wheelie bins will be delivered to each household from March (ready for the kerbside service starting 1 July), one for household waste and one for recycling, except glass, which will go into the maroon crate currently used for recycling.

Residents in new areas covered by the service will also be delivered a maroon crate.

For more information on collection areas and days go to: links.marlborough.govt.nz/kerbside

If you have questions about the new system go to: links.marlborough.govt.nz/Kerbside-FAQs phone Council on Ph: 03 520 7400 or email mdc@marlborough.govt.nz

Mayor welcomes appointees to independent ferry service advisory group

Mayor Nadine Taylor has welcomed the appointments to the Ministerial Advisory Group tasked with providing independent advice and assurance on the future of KiwiRail's inter-island ferry service.

State Owned Enterprises Minister Paul Goldsmith has announced that Nelson Airport Chief Executive Mark Thompson will chair the Ministerial Advisory Group. He will be joined by a further two members, Mark Cairns (currently a director of Freightways, Auckland International Airport and Sanford Limited) and Roger Sowry, a former MP and cabinet minister, now a professional director with considerable governance expertise.

News of the appointments follow KiwiRail's recent announcement of its intention to cancel the \$555 million contract with ship builder Hyundai Mipo Dockyard in South Korea.

"This cancellation is not a fresh blow for the region - the bad news came for Marlborough last December when the Government announced it was pulling funding. At the time this was a shock, particularly for the Picton community who have been and continue to be the most directly affected by the disruptive project works," Mayor Taylor said.

The Ministry of Transport will also lead an assessment of long-term interisland service requirements and replacement options for the Interislander ferries is expected to be part of these broader reviews.

"We have continued to make representation to the Government that we need to invest in this critical national transport connection for the long term. I am pleased to see the Government has moved quickly and we now look forward to working with the Ministerial Advisory Group," Mayor Nadine Taylor said.

The appointment of the Ministerial Advisory Group follows the Government's decision last year not to provide further funding for the Inter-Island Resilient Connection (iReX) project.



Council continues to advocate for investment in the Cook Strait ferry connection between Picton and Wellington

Kina removal reaping rewards in Tōtaranui/Queen Charlotte Sound

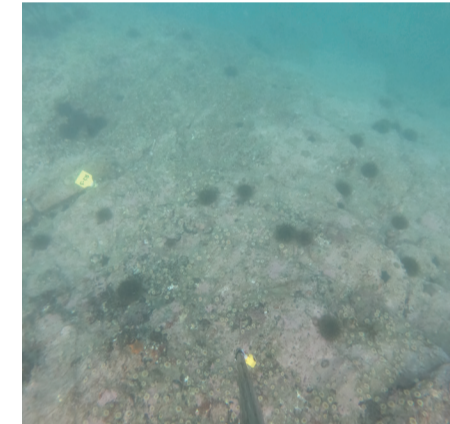
Removing kina from sites in Tōtaranui/Queen Charlotte Sound has encouraged the recovery of many significant rimurimu/seaweed and kelp species, the Environment and Planning committee heard recently.

Council's Nautical and Coastal Science team have been working with the University of Auckland who are monitoring experimental sites in the Sound. In a report prepared for the committee, Council's Senior Coastal Scientist Katie Littlewood says rimurimu and kelp are both critical for ecosystem function and health as they create habitats for numerous marine species and also sequester carbon.

"Kina are endemic herbivorous grazers that feed on important rimurimu and kelp. An area can become overpopulated with kina, leading to kina barrens, which are areas completely cleared of seaweed and kelp due to over grazing," Katie said.

Dallas Lafont from the university research team spoke to the committee about the research.

"Seaweed species have been declining for 50 years due to overgrazing by kina, warmer sea temperatures and sedimentation," Dallas said.



Kina removal at an experimental site at Motuara Island has seen excellent results for recovery of kelp species - before (left) and after (right)

"Species that predate on kina, such as large blue cod, snapper and crayfish, are low in number which allows kina to overpopulate and clear areas that were once full of healthy kelp and seaweed species."

Four areas in Tōtaranui were selected to be part of the project and the extent of recovery and re-establishment of seaweed has been noticeable.

"After 18 months of monitoring the four experimental sites we have observed some degree of recovery at all sites. In particular, the return of hundreds of giant kelp (*Macrocystis pyrifera*) at one site," Dallas said.

"While these results are exciting and kina removal is one useful tool to kickstart the recovery, the larger goal is to ultimately make these kelp forests self-sustaining, which will require further measures."

This research has been carried out with support from Te Ātiawa and the Tē Taihū Iwi Fisheries Forum and has been funded by Sustainable Seas and Port Marlborough.



Every drop of water counts

Saving water at home may feel like it's just a drop in a bucket but at this time of year every little bit helps.

Regardless of where you are or what water supply you use, saving water is good for everyone and there are lots of ways you can make a difference.

Council has put together some top water saving tips - you can find more on our website. Go to: www.marlborough.govt.nz/services/utilities/water-supplies/water-saving-tips

In the garden

- Remove the catcher from your mower and let the cut grass act as a mulch on the lawn
- Start a compost heap with lawn clippings, leaves, garden rubbish and food scraps; the mulch created can save up to 73% of the water lost by evaporation
- Maintain good shelter around your garden - strong winds dry out the soil
- Water your garden in the cool of the morning or late evening, on the appropriate irrigation day when your plants get maximum benefit from the water you give them
- Adjust sprinkler heads to avoid water being wasted on pavements, drives and patios

Around the home

- Check taps for leaks
- Use a glass of water to rinse when brushing your teeth
- Take shorter showers
- Keep a jug of cold water in the fridge - this prevents wastage when running the tap
- Use your washing machine and dishwasher once a day with a full load and select the water saving option

Did you know if you brush your teeth twice a day for 3 minutes and leave the tap running while you're brushing, you'll use around 5 litres per minute. That's 10,950 litres per year! Remember, every drop counts.



New Tirimoana Reserve pathway

A new walking path in the Tirimoana Recreation Reserve at Anakiwa has enhanced the area and made it more accessible.

The path guides walkers through the reserve starting at the Tirimoana Terrace entrance and goes along near the stream, over an existing bridge and through a grove of kowhai trees.

The area under the kowhai trees has been barked and the addition of picnic tables built by Havelock Menz Shed provides a shady spot for a rest or picnic.



The newly installed path and barked area under the kowhai grove complete with picnic tables

Watch out for woolly nightshade

Council's Biosecurity team's work includes managing plant, animal and marine pest species, with the ever-present risk of new threats that can impact our environment, primary industries and quality of life.

Woolly nightshade

Woolly nightshade, *solanum mauritianum* (pictured), is commonly known as tobacco weed, flannel-leaf or kerosene plant.

Native to South America, it is multi-branched with grey green leaves and purple single flowers, and grows up to 10 metres high.

It currently has limited distribution with an infestation on Rangitoto ki te Tonga/d'Urville Island and another near Okiwi Bay. It forms dense stands and prevents the establishment of native plants and slows forest regeneration. It can be spread by birds producing many seeds for most of the year.

The project was a long-held aspiration for the Tirimoana and Anakiwa Residents' Association (TARA) and was funded by Council's Small Townships Programme.

Marlborough Sounds Ward Councillor Barbara Fauls says the path gives safer all-weather access to the reserve.

"It opens up the space and makes it feel more like a neighbourhood park," she said.

"It was great to see it used by visitors and local families during the holiday period."

Woolly nightshade is under a sustained control programme and Council will carry out all control work at no cost to the landowner, with sites visited regularly.

If you are visiting the Sounds and come across any plants, contact Council on Ph: 03 520 7400. Please take a photo and record the location to help with identification.



Wither Hills Farm Park remains closed

The Wither Hills Farm Park remains closed due to the hot and dry conditions.

Council made the decision following discussion with Fire and Emergency New Zealand (FENZ) in the interest of public safety. Due to the mixture of dry grass, steep slopes and warm and windy conditions, a fire would spread very quickly, placing people at extreme risk.

Council is also warning people to be very careful when walking or biking in the Taylor River Reserve, especially between the Burleigh Bridge and Taylor Dam.

The vegetation is super dry and a spark could cause a quick-spreading fire. Reserve users should think carefully about their route and ensure they have a plan to exit the reserve quickly in case of fire.

Early morning and late evening walks are recommended when the danger level is lower.



No access due to extreme fire risk

For more information phone 03 520 7400 or visit our website [marlborough.govt.nz](https://www.marlborough.govt.nz)

Public Notices

Meet your Council



Mayor Nadine Taylor leads a team of 14 elected councillors. They are responsible for making decisions and developing policies that will help shape our province into the future.

Council's vision is that Marlborough is a globally-connected district of smart, progressive, high-value enterprises, known for its economic efficiency, quality lifestyle and wellbeing, caring community, desirable location and healthy natural environment.

For more information or to contact one of your elected representatives, go to: www.marlborough.govt.nz/your-council/councillors or Ph: 03 520 7400.

Commercial Events Fund open now

Round 2 of Council's 2023/2024 Commercial Events Fund is now open for applications.

This fund was established to help create economic benefit to Marlborough by attracting new events and helping to build on existing ones. Council's Commercial Events Fund sub-committee considers the applications and there is up to \$100,000 available for allocation for 2023/2024.

To be eligible, commercial events must be held within the Marlborough District Council boundaries. Community events, conferences, conventions, trade shows and exhibitions are not eligible. Funding is granted on an annual basis but it does not mean that all funds must be

distributed each year. Past applicants who have been unsuccessful may re-apply.

Key dates:

- Applications close: 5pm Monday 11 March 2024
- Funding decision by: 5pm Friday 5 April 2024

Applications must be completed via Council's website. Go to: <https://www.marlborough.govt.nz/recreation/events/commercial-events-fund>

Any enquiries can be directed to Council's Regional Events Advisor, Samantha Young, Ph: 03 520 7400 or email: events@marlborough.govt.nz

Every drop counts

Picton and Waikawa residents can now use sprinklers on alternate days. Hand held hoses, flushing of boat motors and light boat washing are allowed too.

- A property with an even numbered street address may use a sprinkler on even numbered calendar days
- A property with an odd numbered street address can use a sprinkler on odd numbered calendar days

The water play area on the Foreshore will be open on weekends and public holidays.



Awatere and Dashwood rural boil water notice

Water from Council's reticulation network to the Awatere and Dashwood rural areas should be boiled.

It does not currently meet the NZ Drinking Water Standards and may contain bacteria or protozoa that are harmful to human health. All water used for drinking, food preparation or cleaning teeth should be boiled before use.

Treated water is available at the public taps on Marama Road, outside Seddon School. For further information contact the Council on Ph: 03 520 7400.



Blenheim Customer Service Centre

15 Seymour Street, Blenheim 7201
Ph: 03 520 7400

mdc@marlborough.govt.nz

Mon - Tues 8.30am - 4.30pm

Wed 8.30am - 12.30pm / 1.30pm - 4.30pm

Thurs - Fri 8.30am - 4.30pm

Picton Library & Service Centre

2 Dublin Street, Picton 7220

Ph: 03 520 7493

pictonlibrary@marlborough.govt.nz

Mon - Fri 8am - 5pm

Sat - Sun 10am - 4pm

Council & Committee Meetings

The following meetings are open to the public and anyone is welcome to attend. Copies of the agendas will be available online and at Council's Office, 15 Seymour Street, Blenheim.

Full Council - Long Term Plan Budget

Monday 26 February at 9am

Assets and Services Committee

Tuesday 12 March at 9am

Environment and Planning Committee

Thursday 14 March at 9am

Economic, Finance and Community Committee

Tuesday 19 March at 9am

Public Forum

A public forum will be held prior to the Economic, Finance and Community Committee at 8.30am. If you wish to address the Committee you need to confirm your attendance and speaking time with the Committee Secretary at least 24 hours prior. Please note topics are restricted to those agenda items for the meeting or within the Committee's delegation.

All times and dates are subject to change. Please contact the Committee Secretary, Ph: 03 520 7400 for confirmation.

Council's Harbours team - working to ensure our waterways are safe for everyone to enjoy.

Contact the Harbourmaster's Office if you need advice or information about Marlborough's harbours.

03 520 7400 | HARBOURS@MARLBOROUGH.GOV.T.NZ

