

Picton Regional Forum held at Picton Emergency Centre, Memorial Park, Picton, on Monday 9 November 2020, at 1.30 pm

Present

Clr Oddie (Chairperson), Clr Taylor, Clr Faulls, Mike Porter (MDC).

Group Representatives

Raewyn Buchanan (Karakā Point), Monyeen Wedge (QCS Residents Association), Stuart Eyes (Bike Walk Picton), John Reuhman (Picton, Marlborough Sounds Tourism), Tim Newsham (Bay of Many Coves), Beryl Bowers (Picton Historical Society), Linda Thompson (Envirohub), John Welsh (Picton Historical Society), Graham Gosling (Picton Business Group).

Guest Speakers

Steve Murrin (Marlborough Roads), Rose Prendeville (Port Marlborough), Gavin Beattie (Port Marlborough), Harry Singh (KiwiRail), Sue Allen (KiwiRail).

Attending

Rebecca Waldron and Kirsty Baldwin (MDC Secretaries)

1. Apologies

Dean Heiford, Tim Healey, Margaret McHugh, Ian Shapcott.

2. Confirmation of previous meeting minutes

Motion to confirm the minutes of the meeting held on 7 September 2020.

Clr Faulls/Graham Gosling – Carried

3. Marlborough Roads Update – Steve Murrin

- Etching of clay pavers in High Street has begun. The pavers on the foreshore will also have the same work done.
- Dublin Street works are to begin next week, weather dependent Kent/Wairau Road intersection will be resurfaced before Christmas.
- Footpath upgrades on Waikawa Road and some side streets will be undertaken over summer.
- The government have recently released their Waka Kotahi Investment Proposal, detailing what they will invest in for the next three years. Most investment has gone to North Island projects; however the Ferry Terminal improvements and a roundabout for Bells Road/State Highway 6 Intersection have been approved.
- An issue with the bunding at properties on Port Underwood Road was brought up. Steve noted that this is an ongoing issue and the contractor has been asked to install a concrete channel instead of redoing the bunds. This should fix the issue.
- There is concern about trucks parking in Picton with areas being used as truck stops, creating difficulties for people taking children to and from school. A business case is being worked on as part of the ferry terminal work to look at options for truck parking in Picton.

- The issue of traffic congestion at the entrance to Blenheim was discussed. The State Highway 1, Blenheim Investigation Report which is available on the Marlborough District Council website addresses this (link below):

https://www.marlborough.govt.nz/repository/libraries/id:1w1mps0ir17q9sgxanf9/hierarchy/Documents/Your%20Council/Meetings/2020/Assets%20%26%20Services%202020%20list/Item_8_-_09072020_-_SH1_Blenheim_Investigation_Report.pdf

4. Actions from the previous meeting

Action	Person Responsible
1. Find out whether it will be a requirement for the cruise ships to switch their engines off when finished berthing at the new facility. <i>(Completed email sent out to PRF following 9 September meeting)</i>	Clr Faulls
2. Arrange a donation for the use of the Picton Emergency Operations Centre for Picton Regional Forum meetings during 2020. <i>(TBC)</i>	Dean Heiford
3. Follow up fixing of Raewyn Buchanan's road, previously brought up with Steve Murrin. <i>(Completed – see above)</i>	Clr Faulls
4. Contact Rose Prendeville for an update on the Port development to be sent out with the meeting notes. <i>(Completed – attached as an appendix to the 9 September minutes)</i>	Chris Hines
5. Invite a speaker from KiwiRail and PMNZL to next meeting re the Ferry Development. <i>(Completed)</i>	Dean Heiford/Chris Hines
6. Invite a speaker from NZTA re roading and the Ferry Redevelopment. <i>(Completed)</i>	Dean Heiford/Chris Hines

5. Other Matters

Envirohub – Linda Thompson

- A group has been formed to help organisations hold Zero Waste events in Marlborough. The group discusses with stall holders on how to reduce their waste and provides crockery, cutlery wash stations and pig or compost bins for food waste. The next step for the group is to apply for funding to buy a Zero Waste trailer.

Ungulate Problem in the Marlborough Sounds – Tim Newsham

- There has been an explosion of ungulates (pigs, deer and goats) in the Sounds which is resulting in a lot of trees getting ring-barked and dying.
- A group has been established by Rick Wells, the Chair of Bay of Many Coves Residents Association. The group is looking at applying for funding to the Council's Working for Nature programme.
- It was noted that the long term success of this venture would depend on how the group is formed and structured.
- This issue was also raised at the last two Sounds Advisory Group meetings.

Local MP – Monyeen Wedge

- An invitation will be extended to Stuart Smith to attend the next meeting of the Picton Regional Forum to give a post-election update. It was also noted that all the previous minutes for the Picton Regional Forum are publicly available via Council's website. (Link below).

<https://www.marlborough.govt.nz/your-council/picton-regional-forum>

- Sounds Advisory Group minutes are also available on the website. (Link below).

<https://www.marlborough.govt.nz/environment/coastal/community-involvement/sounds-advisory-group>

- Further information on the criteria of the Forum and how it was formed is also available on the website. (Link below).

<https://www.marlborough.govt.nz/your-council/picton-regional-forum>

Items for 2021 Agendas

- Update on the UV treated sewage into Picton Harbour (Steve Rooney).
- Report on the results of the Picton Air Quality Monitoring study.
- Presentation from the Dog Control Officer about the new bylaws.

6. Ferry Precinct Update – Gavin Beattie (PM) and Harry Singh (KiwiRail)

- Gavin Beattie and Harry Singh gave a presentation about the Picton Ferry Terminal Upgrade Project attached as Appendix A.

Questions and Answers

- It was confirmed that the resource consent for the precinct is being fast tracked under the Government's new initiative following Covid-19. This will result in a more rigorous and exacting consulting process with affected parties. A cultural impact statement which has been drafted in consultation with Top of the South Iwi is near completion.
- Affected parties such as land owners, swing mooring holders and business operators have been formally consulted with. The plans should be lodged just prior to Christmas and the process should be completed by the end of April next year.
- Work is being carried out on commercial agreements between Port Marlborough, Marlborough District Council and KiwiRail. Waka Kotahi (NZTA) and KiwiRail are working together on a wider transport review of affected roading around Picton.
- It was confirmed that gangways will still be walk on. No dates are confirmed for commencing the work yet. The work on the wharf will take place early in the process.
- It was confirmed that there are industry standards for marine construction with Lyttelton setting the bar for this in New Zealand. Monitoring of wildlife and the environment will take place during construction.
- It was noted that the Cawthron Institute have done a survey spanning more than a year on marine activity in three areas; the Snout, Kaipupu Point coastline, and Shakespeare Bay, which has resulted in good information to help with planning, especially the piling impacts.
- The new jetty will be 100 metres longer than the existing one with the height remaining about the same and it shouldn't obstruct the coastline view too much. The jetty will only accommodate smaller cruise ships.
- Charging stations for electric cars will be available when queuing to go on the ferry.
- Light spill is a concern for many residents and the resource consent is required to take this into consideration.
- The new ferry terminal will not have luggage gondolas which is a concern for some members of the group. It was confirmed that there will be provision for those elderly, families with young children or others that may require assistance. A survey during the Christmas break will be undertaken to gather information on how the public feels about this change. .
- Rental car offices will be relocated to the embankment and accessed from the lower level car park. Bulk parking of rental cars is not being considered at the precinct site.

7. Waka Kotahi NZ Transport Authority Roding and Ferry Redevelopment – Steve Murrin

- There are two processes taking place, the application by PM and KiwiRail for consent for the redevelopment of the Ferry Precinct and a process that Marlborough Roads are undertaking to develop a business case to fund some of the transport options which are a consequence of the redevelopment. Money from the 2024-2027 National Land Transport Programme to fund the works.
- The consent will require the causer of any effects to mitigate the effects.
- The proposed overbridge on Dublin Street is to mitigate the effects of the longer trains. There will probably also be changes to the Kent Street/Dublin Street and Wairau Road/Kent Street intersections.
- The Dublin Street overbridge proposal has addressed the concerns of the community that Picton would be divided in half by the railway expansion. A walking and cycling track on the overbridge is included in the plans. It is expected that requirements for the overbridge to be built before or at the same time as the other precinct works take place will be included in the consent.
- Also included in the project are changes to the intersections of Market Street and Broadway. A link to the plans will be available once the application is finalised.
- Not all vessels will run to full schedule initially, other than in peak season. The ships will be bigger but not necessarily run at full capacity. There may be a gradual increase in demand over time.

8. Actions from the meeting

	Action	Person Responsible
1.	Arrange a donation for the use of the Picton Emergency Operations Centre for Picton Regional Forum meetings during 2020. (TBC)	Dean Heiford
2.	Send invitation to MP Stuart Smith to attend the next meeting.	Kirsty Baldwin
3.	Circulate to members the link to resource consent applications when lodged.	Rose Prendeville

9. Future Speakers

- Stuart Smith (MP) (March – tentative)

10. Freedom Camping Update

- Information on the Freedom Camping Bylaw Review will go to a special meeting of Council and will be made publicly available on the Council's website.

<https://www.marlborough.govt.nz/your-council/latest-news-notices-and-media-releases/media-releases?item=id:2c6x65iad17q9sre0xrf>

11. Proposed Meeting Dates for 2021

Picton Regional Forum

8 March 2021
 3 May 2021
 5 July 2021
 6 September 2021
 8 November 2021

Sounds Advisory Group

15 February 2021
 17 May 2021
 9 August 2021
 15 November 2021

The meeting closed at 3.00 pm.

Appendix A



Project Update

- The project has been a long journey for KiwiRail with many important decisions still to make.
- On 14th May 2020, the NZ Government announced funding for KiwiRail to progress the purchase of two rail-enabled ferries and infrastructure – terminals – needed.
- This project is not just about replacing the ships but about upgrading ferry terminals and transport connections and improving the Interislander experience for all our customers.



2

About the new Interislander

- The Interislander is an extension of both State Highway One and the main trunk railway. It provides both an essential transport connection between North and South islands, and an iconic Aotearoa travel experience.
- Every year the Interislander operates 3,800 services a year, transporting about 850,000 passengers, 250,000 cars and up to \$14 billion worth of freight.
- KiwiRail's three Interislander ferries are ready to retire and make way for two new, larger, rail-enabled and more environmentally friendly ferries and new terminal infrastructure.

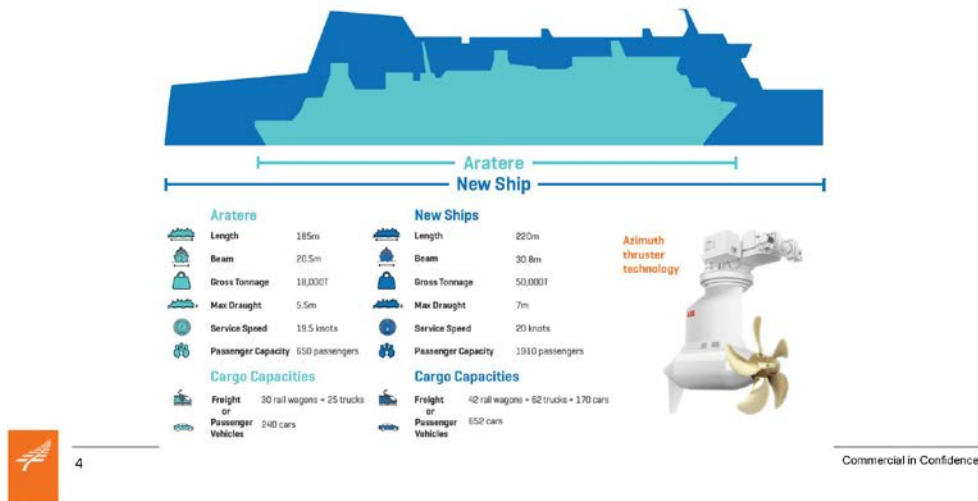


3

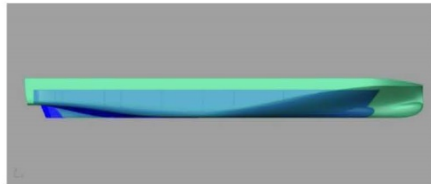


CONFIDENTIAL in Confidence

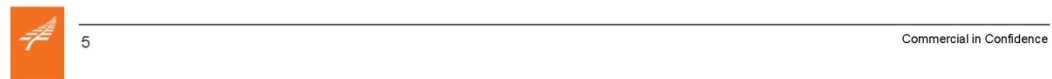
Key facts about the new ships



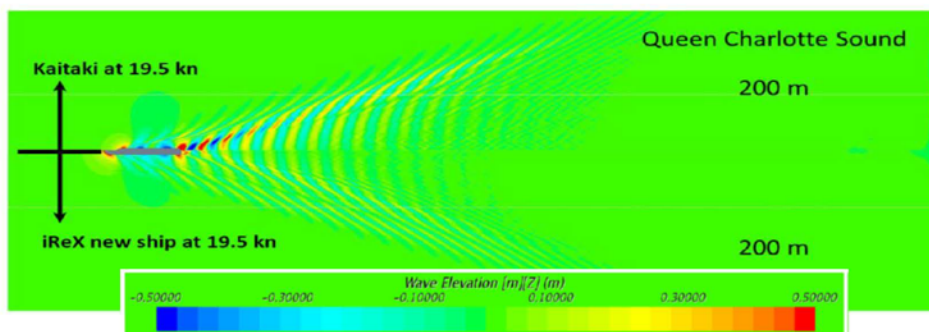
Wave Energy



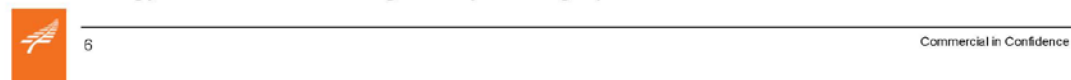
- We followed the Marlborough Sounds Resource Management Plan for the wave energy calculation.
- This was reviewed by MDC.
- Our shipyards will be contractually bound to follow the methodology to comply with wave energy rules.
- The Builder has to design the vessel to perform better than the Kaitaki.



Wake Energy Comparison – Kaitaki vs New Ship



The CFD calculation of wave energy generated by the concept hull shows values between 50% and 70% lower than the maximum allowed wave energy of 9kJ for the range of operating speeds.



Care for the Environment

Diesel Electric – Hybrid Propulsion System

- Future proof for alternative power production
- More batteries for Peak shaving
- Mabel Island to Port on battery from day 1
- Batteries and shore power will be used to eliminate smoke and reduce vessel noise when in berth.
- Diesel fuel – 0.1% SOX content



7

Commercial in Confidence

Waitohi Picton Terminal



8



Terminal Redevelopment

- The Terminal assets are also nearing the end of their serviceable lives and require large scale upgrade to support the new vessels and future demand growth.
- Precinct, marine infrastructure, rail yard and the transport connections will be upgraded.
- Sustainable development and resilience are core priorities for this redevelopment.



9



Terminal Building Concept Design



11



Port Marlborough

Visual Simulation



12



Port Marlborough

Next Steps

- Lodgment of Resource Consent Applications
 - Fast Track Process
 - Extensive formal consultation with affected parties and community
 - Pre-Christmas consent lodgment
- Commercial Agreements
- Procurement planning
- Wider Transport network review and potential improvements



13



Port Marlborough